

FLOOR PLAN - GENERAL NOTES
A. DIMENSIONS ON FLOOR PLAN ARE BASED ON FACE OF FINISHED WALL TO FACE OF FINISHED WALL (NOMINAL).
B. VERIFY ALL DIMENSIONS AND CONDITIONS AT JOB SITE. PORTIONS OF EXISTING CONSTRUCTION MAY HAVE BEEN REMOVED BY OWNER.
C. MAINTAIN CONTINUOUS UTILITY SERVICE TO ALL SPACES IN THE BUILDING NOT AFFECTED BY THIS WORK. COORDINATE WITH OWNER ANY DISRUPTION IN SERVICES REQUIRED TO PERFORM WORK OR TO MODIFY EXISTING PIPING, DUCTWORK OR ANY ASSOCIATED EQUIPMENT.
D. REFER TO SHEET A88X FOR ROOM FINISH SCHEDULE AND NOTES.
E. REFER TO SHEET A88X FOR DOOR SCHEDULES, DOOR TYPES, AND NOTES.

NOTE # FLOOR PLAN NOTE

1	ONE HOUR FIRE RESISTIVE CONSTRUCTION
2	TWO HOUR FIRE RESISTIVE CONSTRUCTION

KEYNOTE LEGEND - EXTERIOR WALL TYPES

TAG	EXTERIOR WALL DESCRIPTION
W1	EXTERIOR WALL: MASONRY VENEER STUD WALL CONSISTING OF 3/8\"
W4.4	EXTERIOR WALL: MASONRY STONE VENEER WALL CONSISTING OF 3/8\"
W4.5	EXTERIOR WALL: MASONRY STONE VENEER WALL CONSISTING OF 3/8\"
W6	EXTERIOR WALL: PANEL WALL SYSTEM CONSISTING OF 7/8\"

1 210 FIRST FLOOR PLAN
1/8\" = 1'-0\"

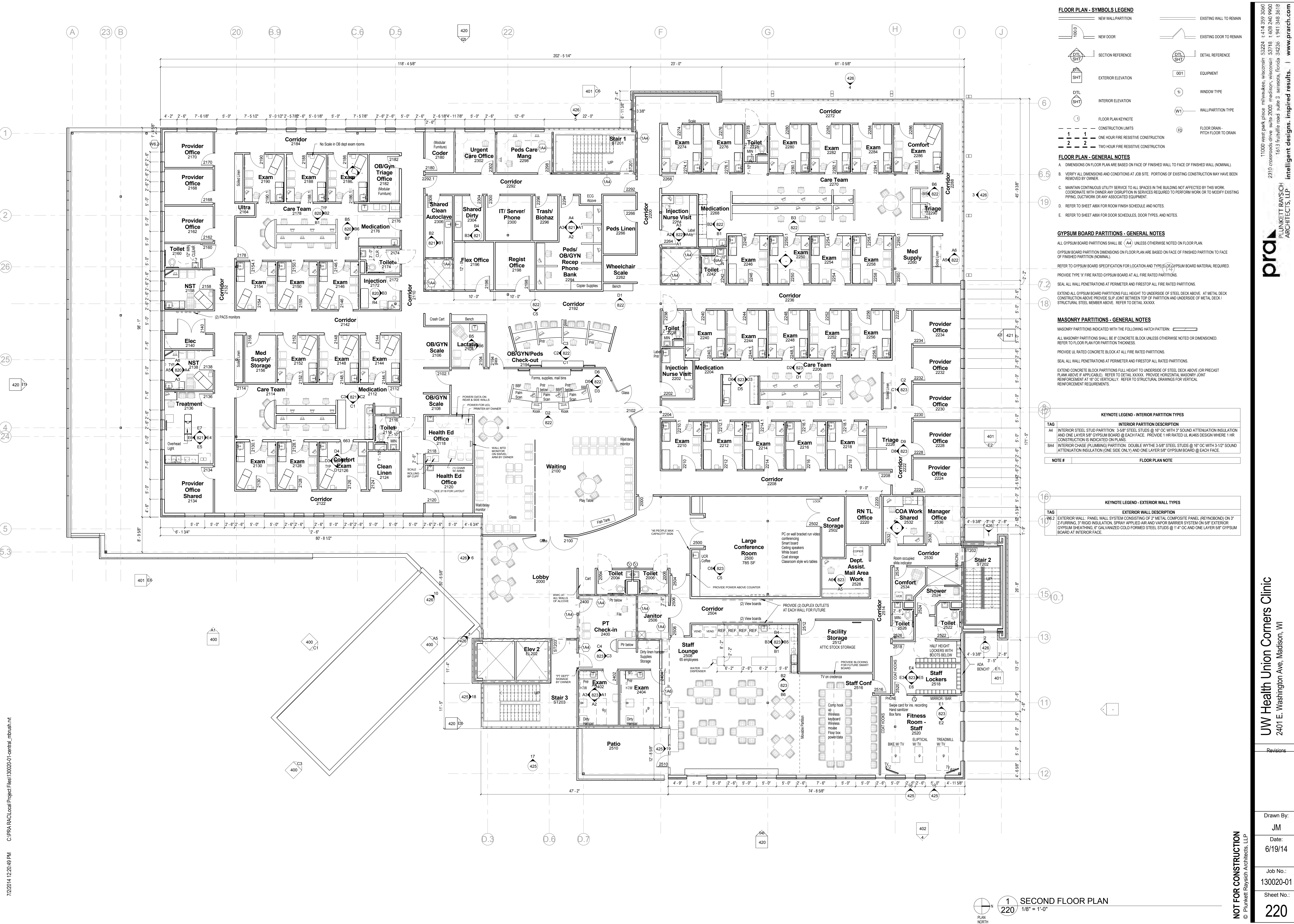
prad PLUNKETT RAYSICH ARCHITECTS, LLP
11000 West Park Place, Milwaukee, Wisconsin 53224 t: 414 359 3060
2310 crossroads drive, suite 2000, madison, wisconsin 53718 t: 608 240 9900
1613 fruitville road, suite 3, sarasota, florida 34236 t: 941 348 3618
www.prarch.com

UW Health Union Corners Clinic
2401 E. Washington Ave, Madison, WI

Revisions	Design	Date
5	Question	1

Drawn By: JM
Date: 6/19/14
Job No.: 130020-01
Sheet No.: 210

NOT FOR CONSTRUCTION
© Plunkett Raysich Architects, LLP



FLOOR PLAN - SYMBOLS LEGEND

	NEW WALL PARTITION		EXISTING WALL TO REMAIN
	NEW DOOR		EXISTING DOOR TO REMAIN
	SECTION REFERENCE		DETAIL REFERENCE
	EXTERIOR ELEVATION		EQUIPMENT
	INTERIOR ELEVATION		WINDOW TYPE
	FLOOR PLAN KEYNOTE		WALL PARTITION TYPE
	CONSTRUCTION LIMITS		FLOOR DRAIN - PITCH FLOOR TO DRAIN
	ONE HOUR FIRE RESISTANT CONSTRUCTION		
	TWO HOUR FIRE RESISTANT CONSTRUCTION		

FLOOR PLAN - GENERAL NOTES

A. DIMENSIONS ON FLOOR PLAN ARE BASED ON FACE OF FINISHED WALL TO FACE OF FINISHED WALL (NOMINAL).

B. VERIFY ALL DIMENSIONS AND CONDITIONS AT JOB SITE. PORTIONS OF EXISTING CONSTRUCTION MAY HAVE BEEN REMOVED BY OWNER.

C. MAINTAIN CONTINUOUS UTILITY SERVICE TO ALL SPACES IN THE BUILDING NOT AFFECTED BY THIS WORK. COORDINATE WITH OWNER ANY DISRUPTION IN SERVICES REQUIRED TO PERFORM WORK OR TO MODIFY EXISTING PIPING, DUCTWORK OR ANY ASSOCIATED EQUIPMENT.

D. REFER TO SHEET ABX FOR ROOM FINISH SCHEDULE AND NOTES.

E. REFER TO SHEET ABX FOR DOOR SCHEDULES, DOOR TYPES, AND NOTES.

GYPSUM BOARD PARTITIONS - GENERAL NOTES

ALL GYPSUM BOARD PARTITIONS SHALL BE (A4) UNLESS OTHERWISE NOTED ON FLOOR PLAN.

GYPSUM BOARD PARTITION DIMENSIONS ON FLOOR PLAN ARE BASED ON FACE OF FINISHED PARTITION TO FACE OF FINISHED PARTITION (NOMINAL).

REFER TO GYPSUM BOARD SPECIFICATION FOR LOCATION AND TYPE(S) OF GYPSUM BOARD MATERIAL REQUIRED.

PROVIDE TYPE 'X' FIRE RATED GYPSUM BOARD AT ALL FIRE RATED PARTITIONS.

SEAL ALL WALL PENETRATIONS AT PERIMETER AND FIRESTOP ALL FIRE RATED PARTITIONS.

EXTEND ALL GYPSUM BOARD PARTITIONS FULL HEIGHT TO UNDERSIDE OF STEEL DECK ABOVE. AT METAL DECK CONSTRUCTION ABOVE PROVIDE SLP JOINT BETWEEN TOP OF PARTITION AND UNDERSIDE OF METAL DECK / STRUCTURAL STEEL MEMBER ABOVE. REFER TO DETAIL XXXXX.

MASONRY PARTITIONS - GENERAL NOTES

MASONRY PARTITIONS INDICATED WITH THE FOLLOWING HATCH PATTERN:

ALL MASONRY PARTITIONS SHALL BE 8" CONCRETE BLOCK UNLESS OTHERWISE NOTED OR DIMENSIONED. REFER TO FLOOR PLAN FOR PARTITION THICKNESS.

PROVIDE UL RATED CONCRETE BLOCK AT ALL FIRE RATED PARTITIONS.

SEAL ALL WALL PENETRATIONS AT PERIMETER AND FIRESTOP ALL RATED PARTITIONS.

EXTEND CONCRETE BLOCK PARTITIONS FULL HEIGHT TO UNDERSIDE OF STEEL DECK ABOVE (OR PRECAST PLANK ABOVE IF APPLICABLE). REFER TO DETAIL XXXXX. PROVIDE HORIZONTAL MASONRY JOINT REINFORCEMENT AT 16" OC VERTICALLY. REFER TO STRUCTURAL DRAWINGS FOR VERTICAL REINFORCEMENT REQUIREMENTS.

KEYNOTE LEGEND - INTERIOR PARTITION TYPES

TAG	INTERIOR PARTITION DESCRIPTION
A4	INTERIOR STEEL STUD PARTITION: 3-5/8" STEEL STUDS @ 16" OC WITH 3" SOUND ATTENUATION INSULATION AND ONE LAYER 5/8" GYPSUM BOARD @ EACH FACE. PROVIDE 1 HR RATED UL #465 DESIGN WHERE 1 HR CONSTRUCTION IS INDICATED ON PLANS.
B4A	INTERIOR CHASE (PLUMBING) PARTITION: DOUBLE WYTHE 3-5/8" STEEL STUDS @ 16" OC WITH 3-1/2" SOUND ATTENUATION INSULATION (ONE SIDE ONLY) AND ONE LAYER 5/8" GYPSUM BOARD @ EACH FACE.

KEYNOTE LEGEND - EXTERIOR WALL TYPES

TAG	EXTERIOR WALL DESCRIPTION
WB2	EXTERIOR WALL: PANEL WALL SYSTEM CONSISTING OF 2" METAL COMPOSITE PANEL (REYNOLBOND) ON 3" Z-FLOORING, 3" RIGID INSULATION, SPRAY APPLIED AIR AND VAPOR BARRIER SYSTEM ON 5/8" EXTERIOR GYPSUM SHEATHING, 5" GALVANIZED COLD FORMED STEEL STUDS @ 1-4" OC AND ONE LAYER 5/8" GYPSUM BOARD AT INTERIOR FACE.

7/2/2014 12:20:49 PM C:\PROJ\Local\Project Files\130020-01-central_mdush.rvt

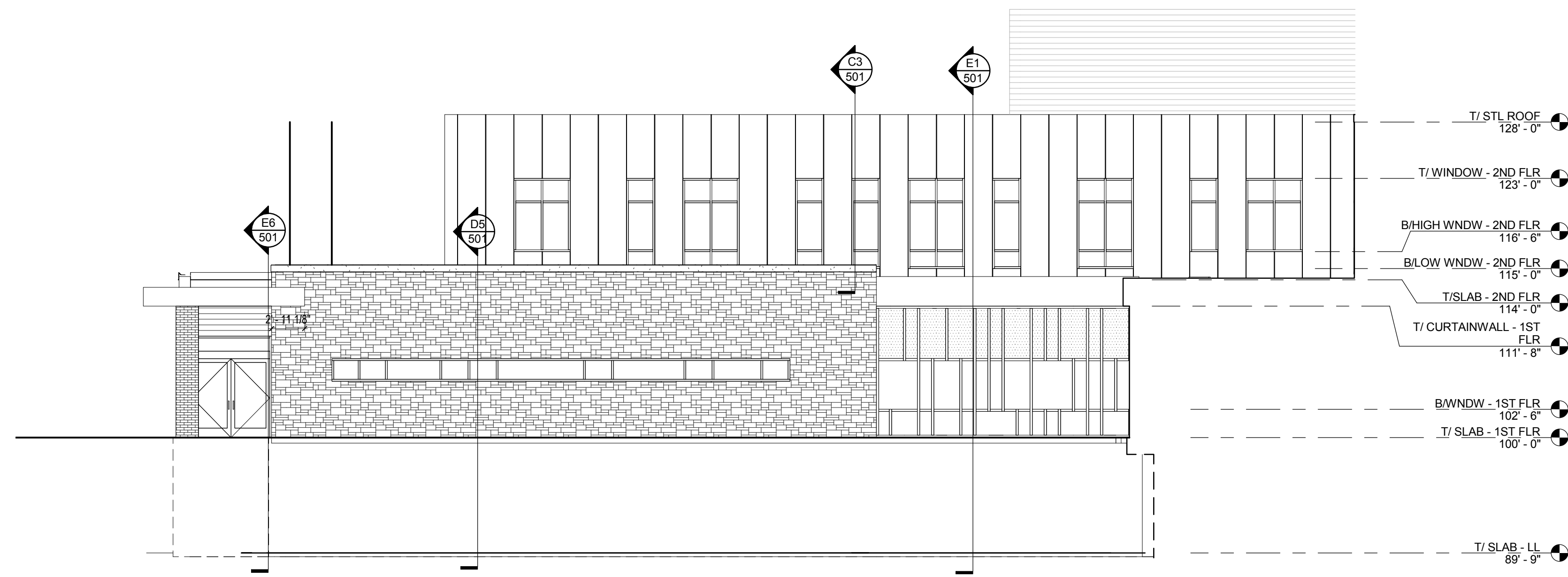
11000 West Park Place Milwaukee, Wisconsin 53224 t: 414 359 3040
2310 crossroads drive suite 2000 meadison, wisconsin 53718 t: 608 240 9900
1613 fruitville road suite 3 sarasota, florida 34236 t: 941 348 3618
www.prrch.com

prad
PLUNKETT RAYSICH
ARCHITECTS, LLP

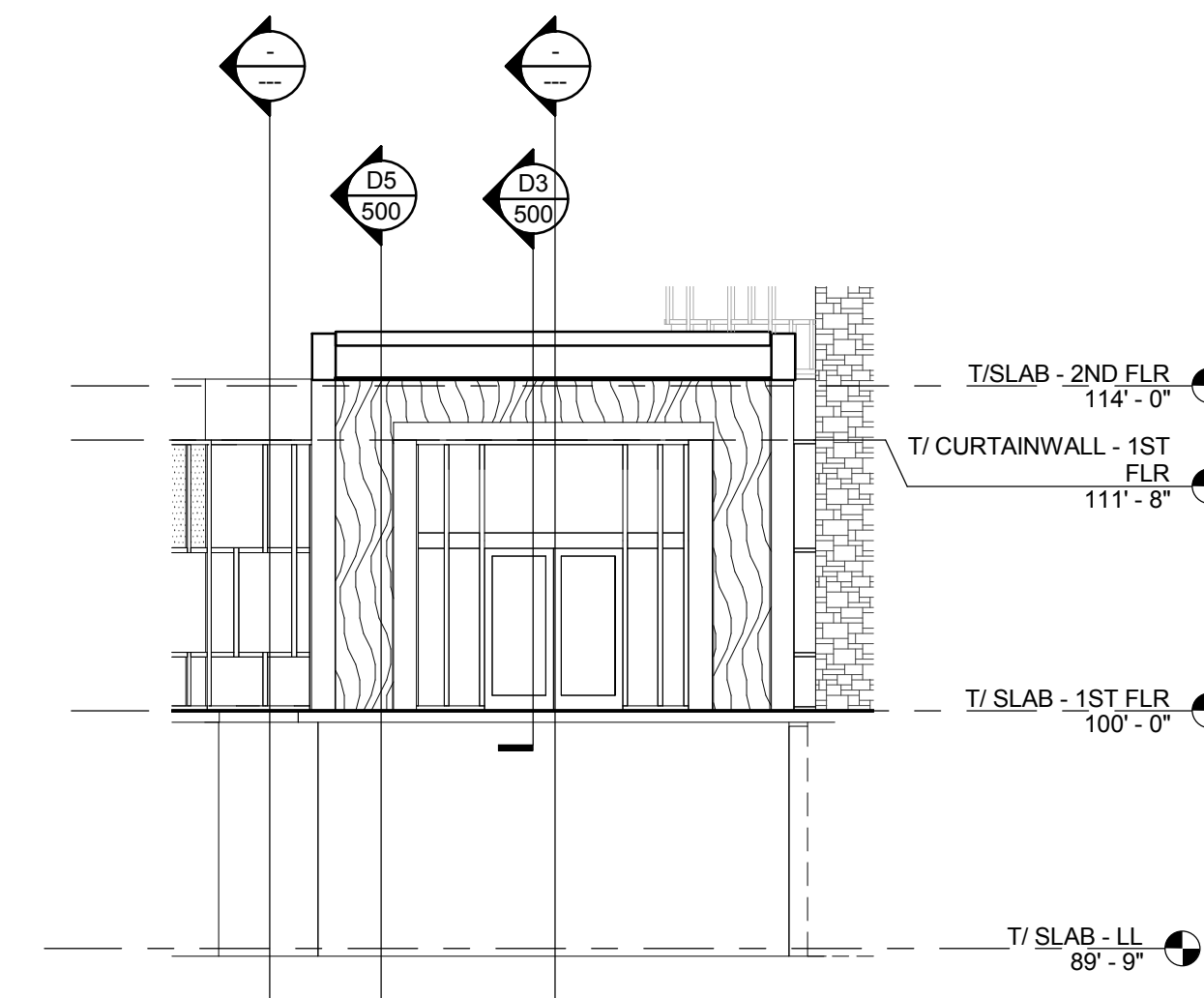
UW Health Union Corners Clinic
2401 E. Washington Ave, Madison, WI

Revisions	
Drawn By:	JM
Date:	6/19/14
Job No.:	130020-01
Sheet No.:	220

NOT FOR CONSTRUCTION
© Plunkett Raysich Architects, LLP



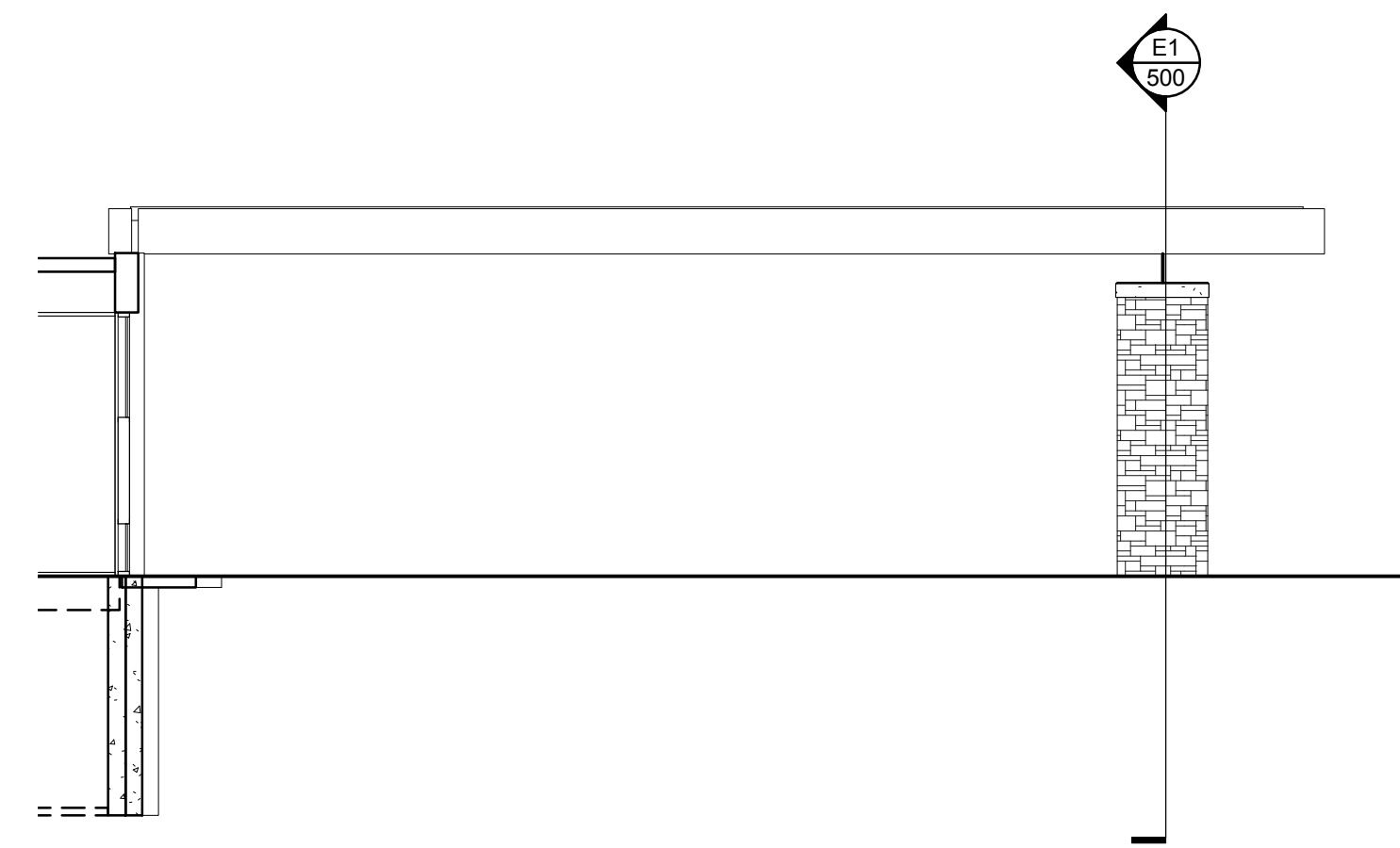
A1 NORTH ELEVATION 1
400 1/8" = 1'-0"



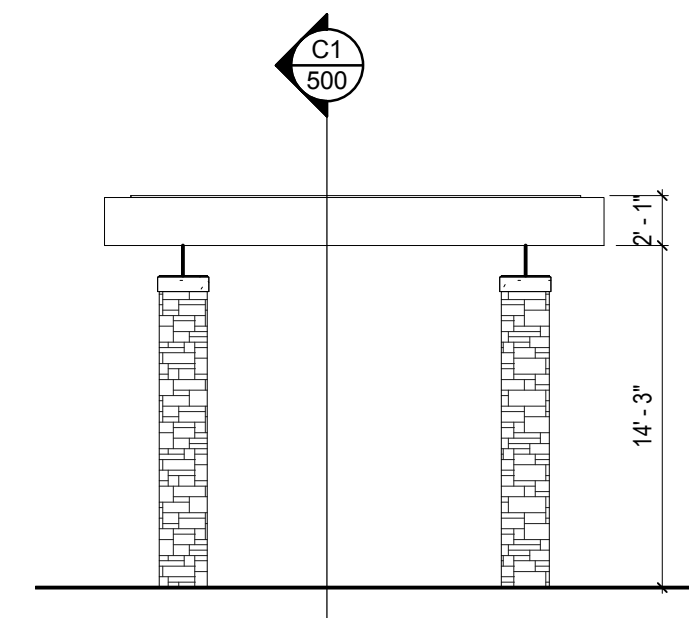
A5 NORTHEAST ELEVATION
400 1/8" = 1'-0"

- EXTERIOR FINISH PATTERNS**
- STONE
 - BRICK
 - CORROGATED METAL SIDING
 - VERTICAL METAL PANELS
 - WOOD GRAINED MTL. PANELS
- EXTERIOR ELEVATIONS - GENERAL NOTES**
- A. PAINT ALL EXPOSED STEEL LINTELS TO MATCH ADJACENT MASONRY COLOR
 - B. TRIM ALL EXTERIOR LIGHTING FIXTURES, OUTLETS, HOSE BIBBS AND ALL OTHER SIDING PENETRATIONS WITH TRIM TO MATCH ADJ. SURFACE (TYP.)
 - C. REFER TO SHEET XXX FOR WINDOW FRAME ELEVATIONS
 - D. SEALANT COLORS TO MATCH ADJACENT FINISHED SURFACES.

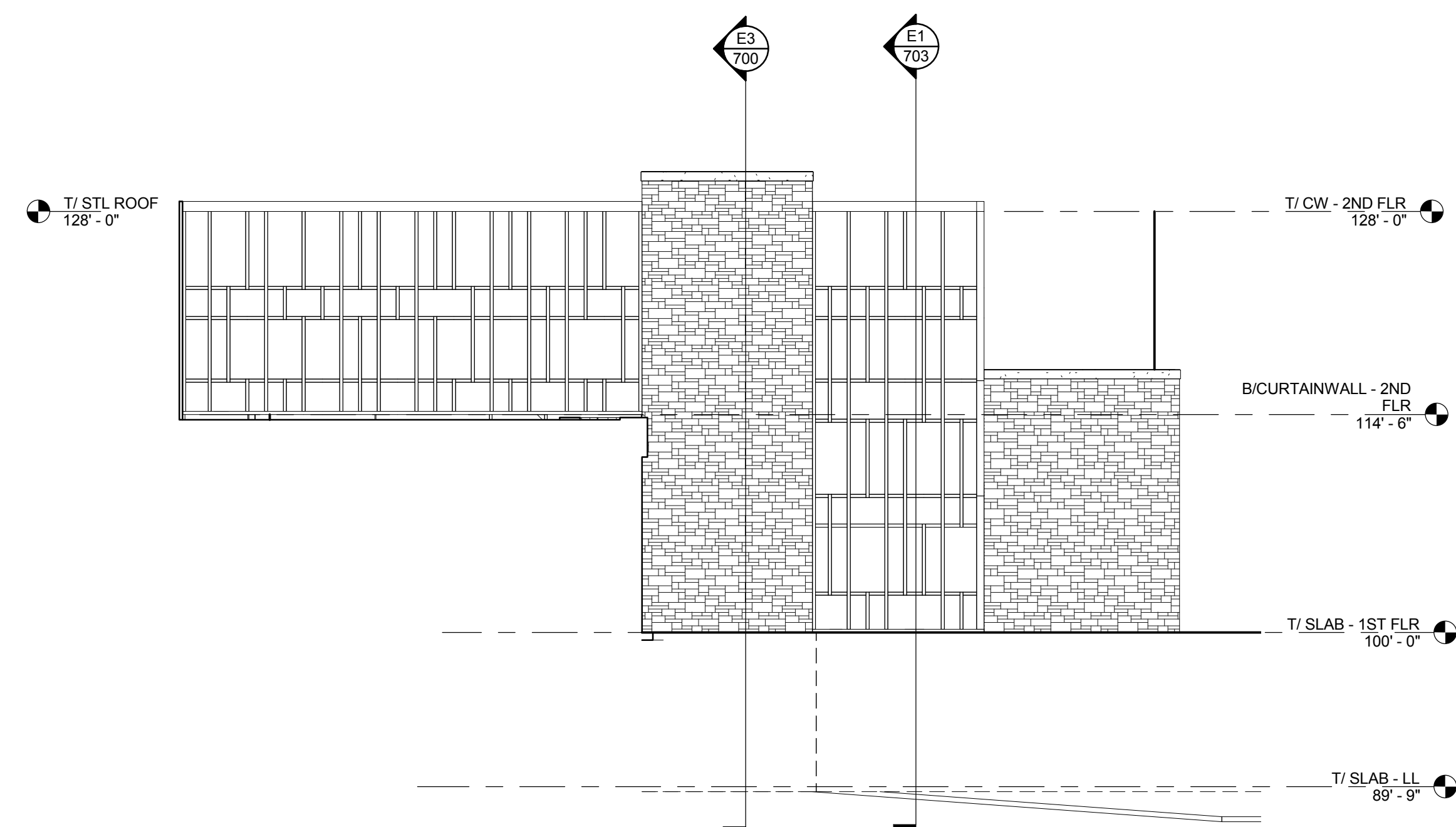
NOTE # _____ EXTERIOR ELEVATION NOTE



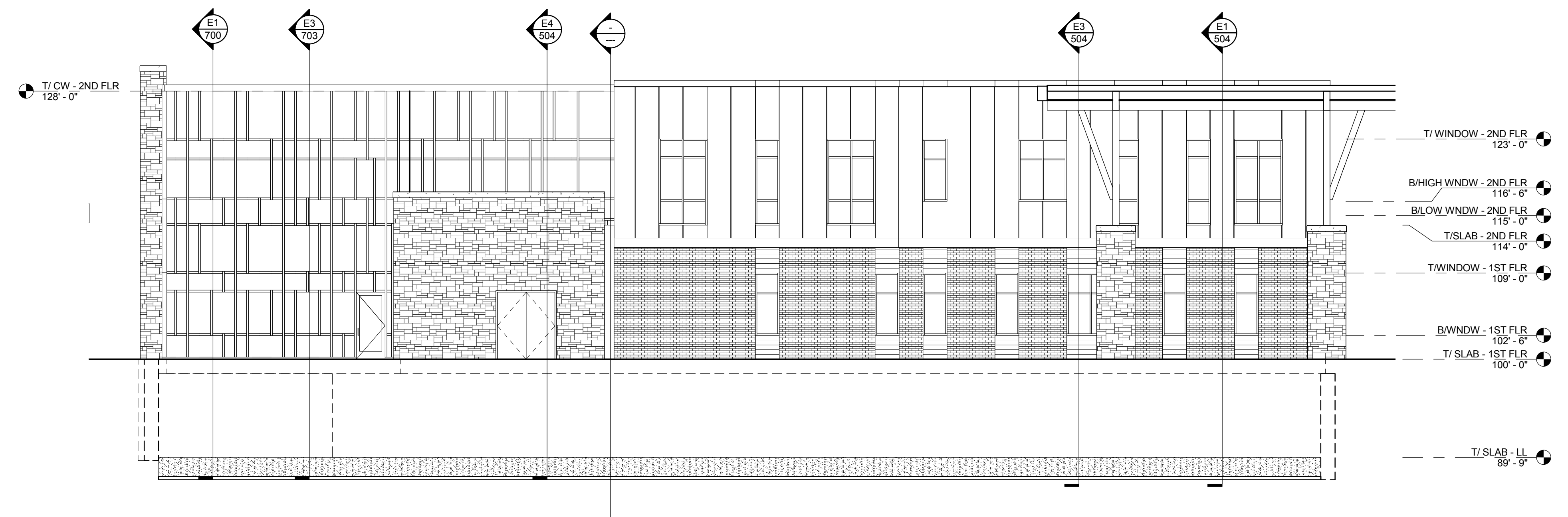
C1 CANOPY - SOUTHEAST ELEVATION
400 1/8" = 1'-0"



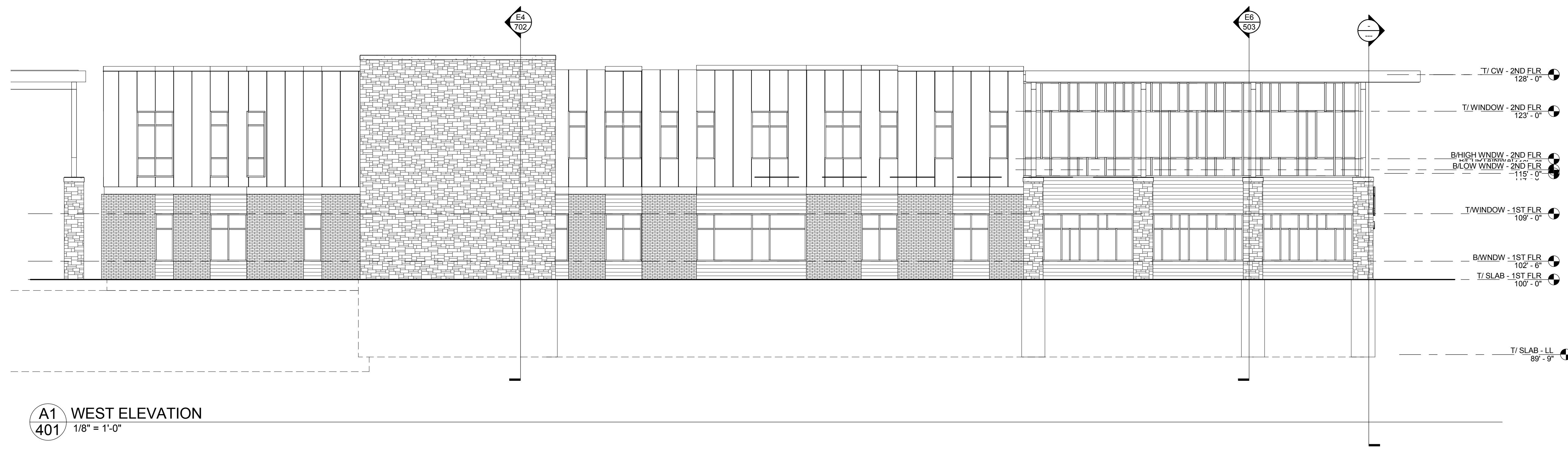
C3 CANOPY - NORTHEAST ELEVATION
400 1/8" = 1'-0"



E1 EAST ELEVATION 4
400 1/8" = 1'-0"

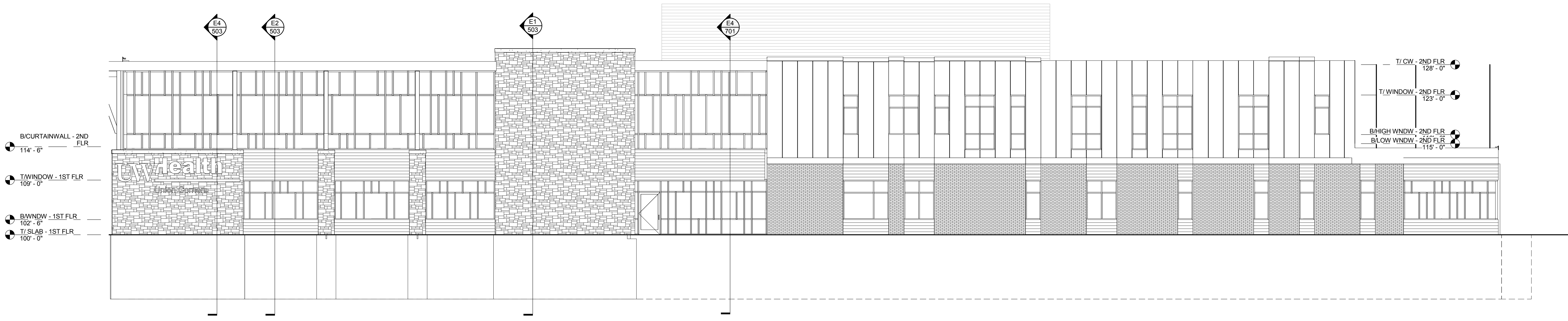


E3 NORTH ELEVATION 2
400 1/8" = 1'-0"

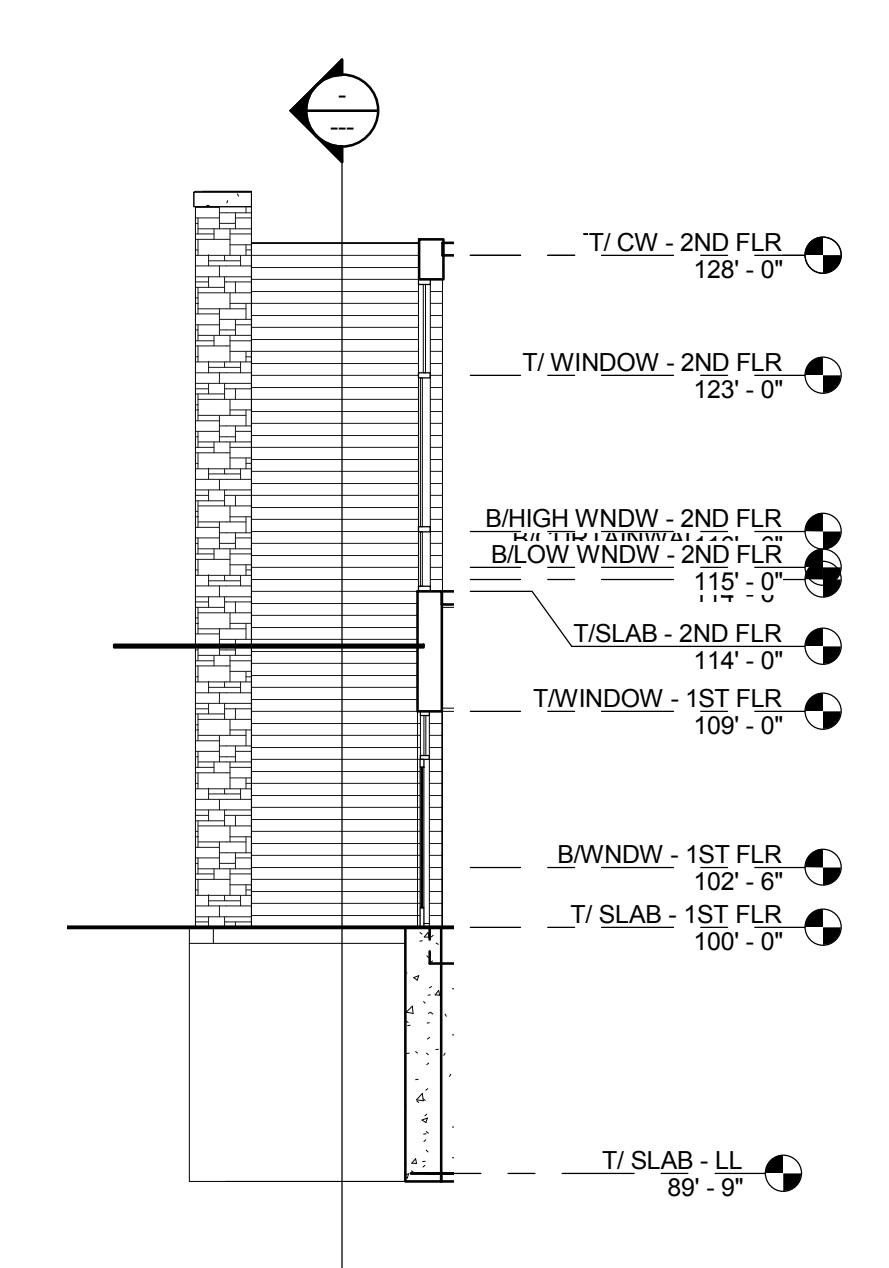


A1 WEST ELEVATION
401 1/8" = 1'-0"

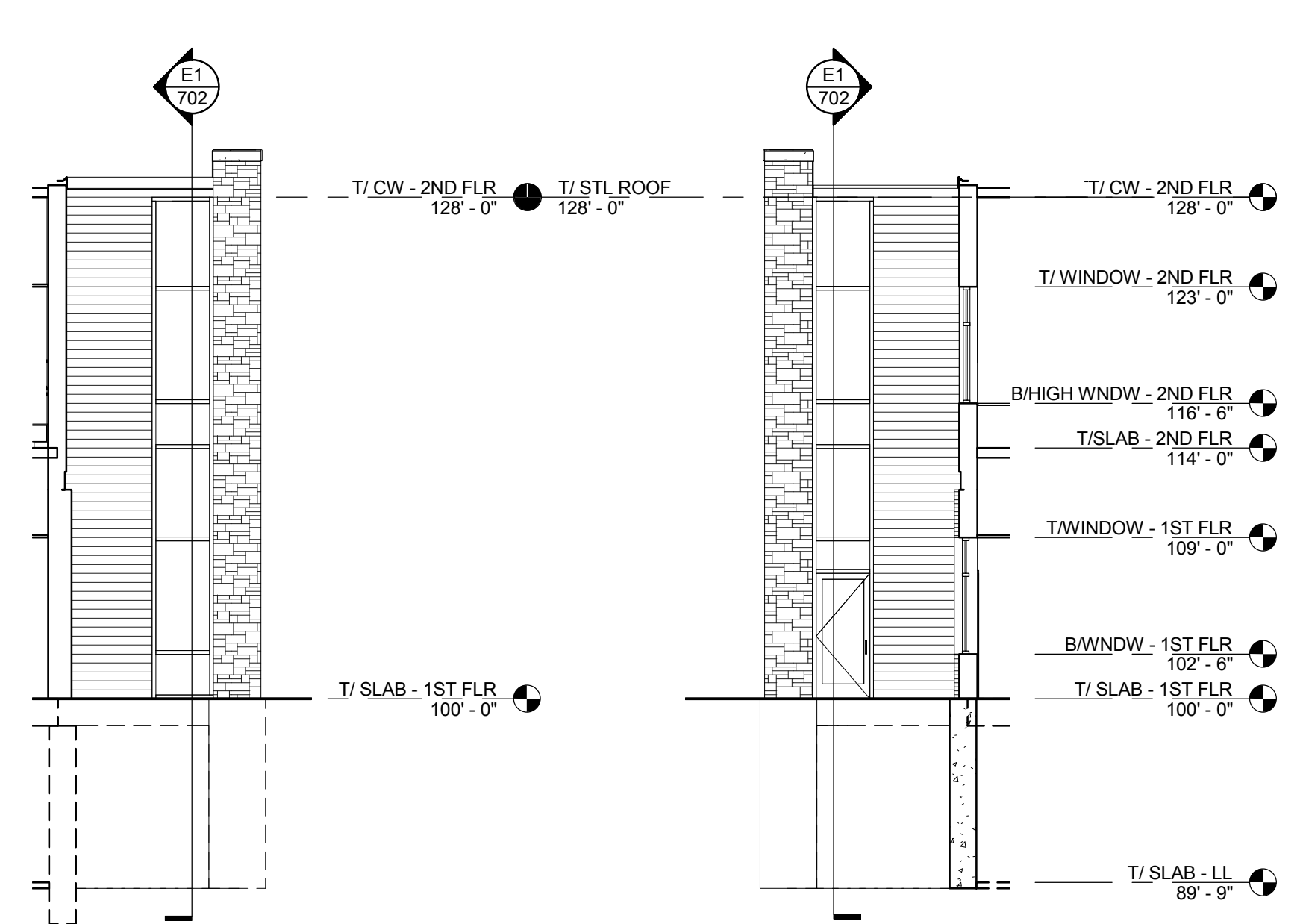
- EXTERIOR FINISH PATTERNS**
- STONE
 - BRICK
 - CORROGATED METAL SIDING
 - VERTICAL METAL PANELS
 - WOOD GRAINED MTL. PANELS
- EXTERIOR ELEVATIONS - GENERAL NOTES**
- A. PAINT ALL EXPOSED STEEL LINTELS TO MATCH ADJACENT MASONRY COLOR
 - B. TRIM ALL EXTERIOR LIGHTING FIXTURES, OUTLETS, HOSE BIBBS AND ALL OTHER SIDING PENETRATIONS WITH TRIM TO MATCH ADJ. SURFACE (TYP.)
 - C. REFER TO SHEET XXX FOR WINDOW FRAME ELEVATIONS
 - D. SEALANT COLORS TO MATCH ADJACENT FINISHED SURFACES.



B1 SOUTH ELEVATION
401 1/8" = 1'-0"

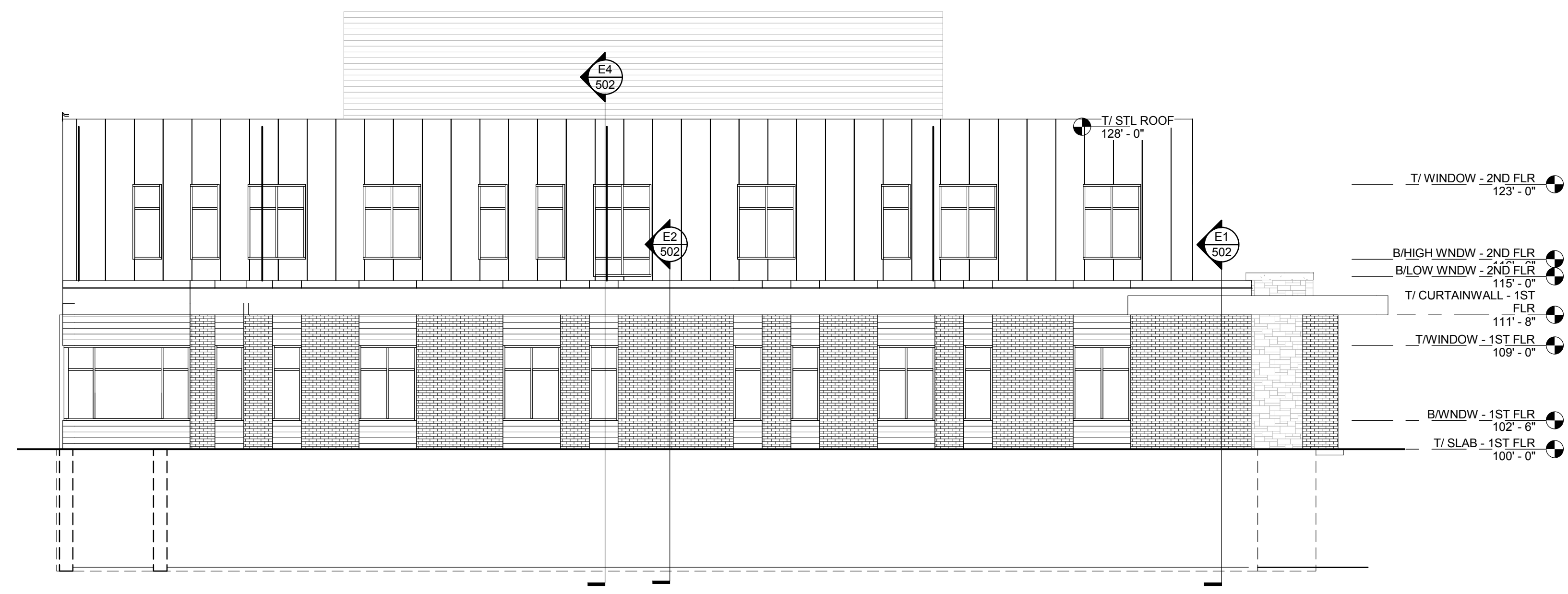


C6 EAST ELEVATION 1
401 1/8" = 1'-0"

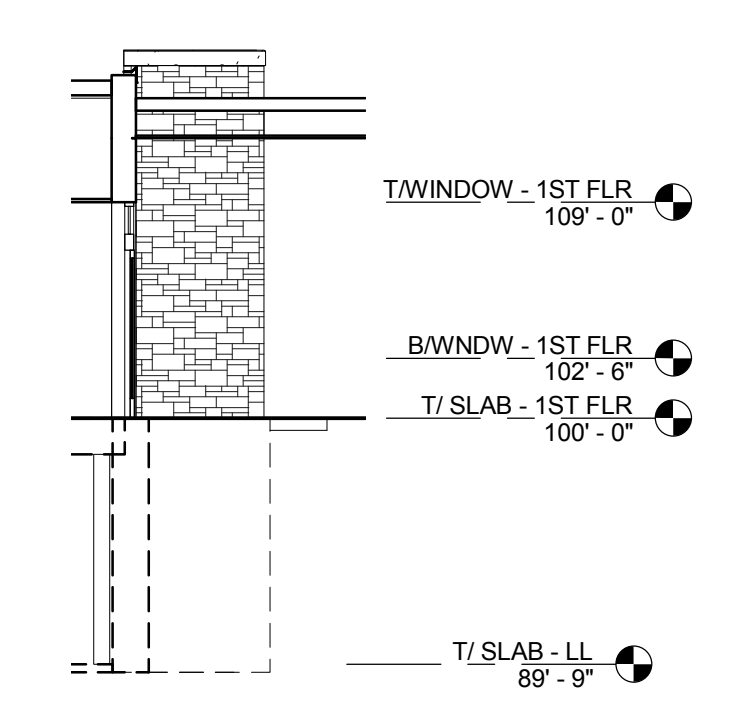


E1 STAIR 2 - NORTH ELEVATION
401 1/8" = 1'-0"

E2 STAIR 2 - SOUTH ELEVATION
401 1/8" = 1'-0"

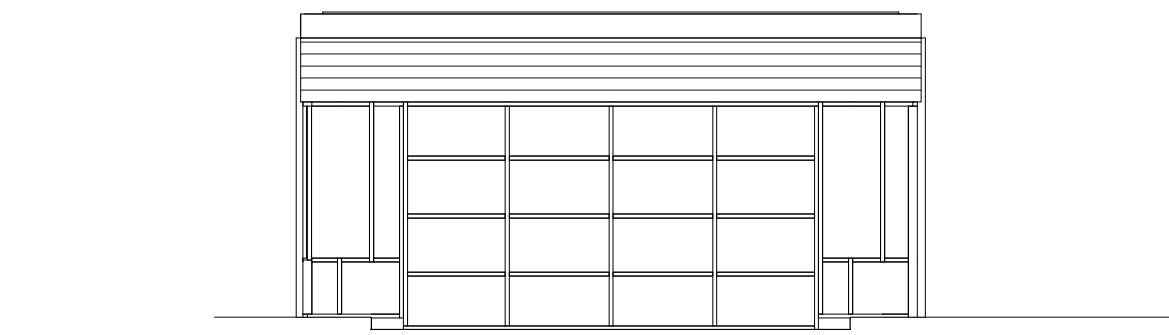


E3 EAST ELEVATION 2
401 1/8" = 1'-0"

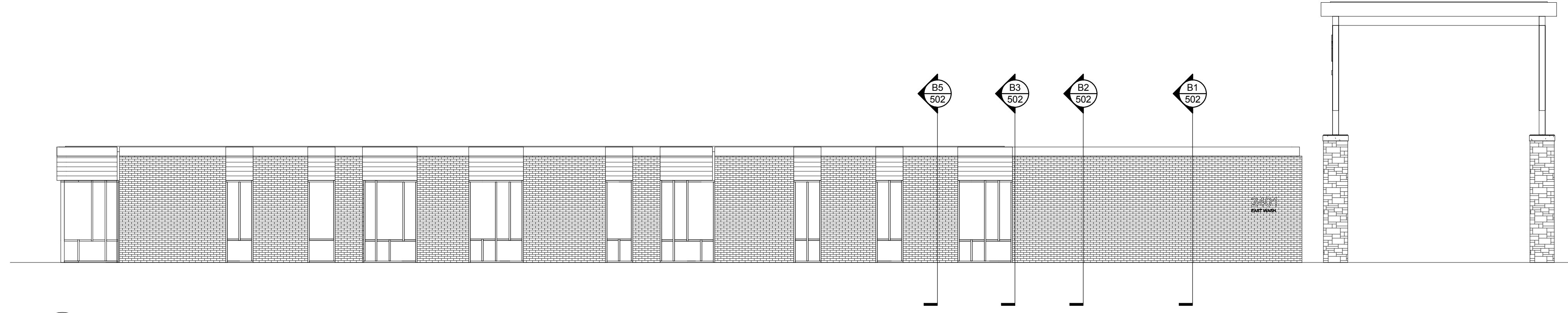


E6 EAST ELEVATION 3
401 1/8" = 1'-0"

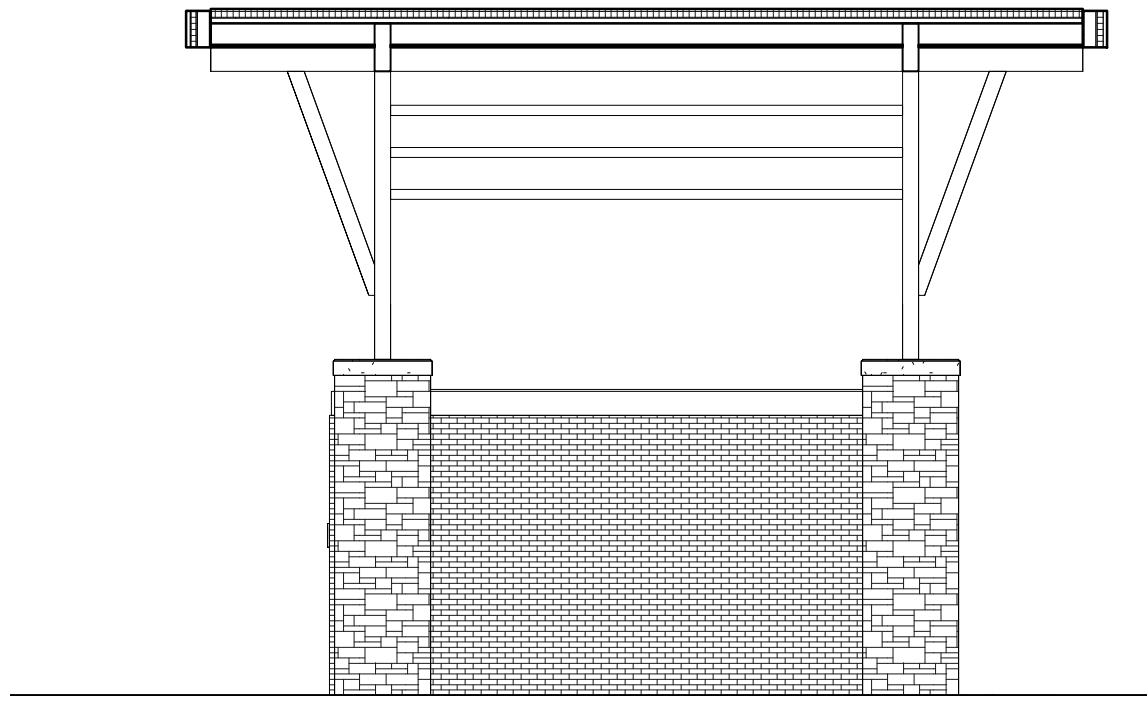
7/2/2014 12:20:53 PM C:\PRA\BAC\Local Project Files\130020-01-central_mduah.rvt



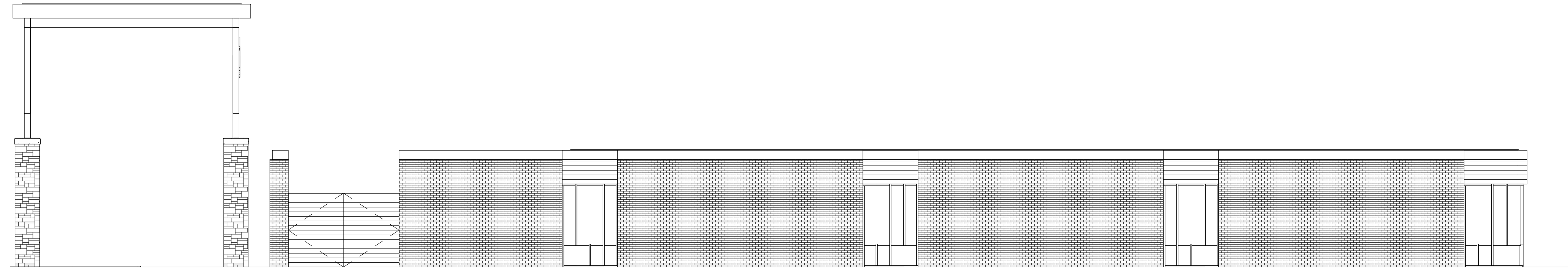
2 TRANSIT - NORTH ELEVATION
402 1/8" = 1'-0"



1 TRANSIT - WEST ELEVATION
402 1/8" = 1'-0"

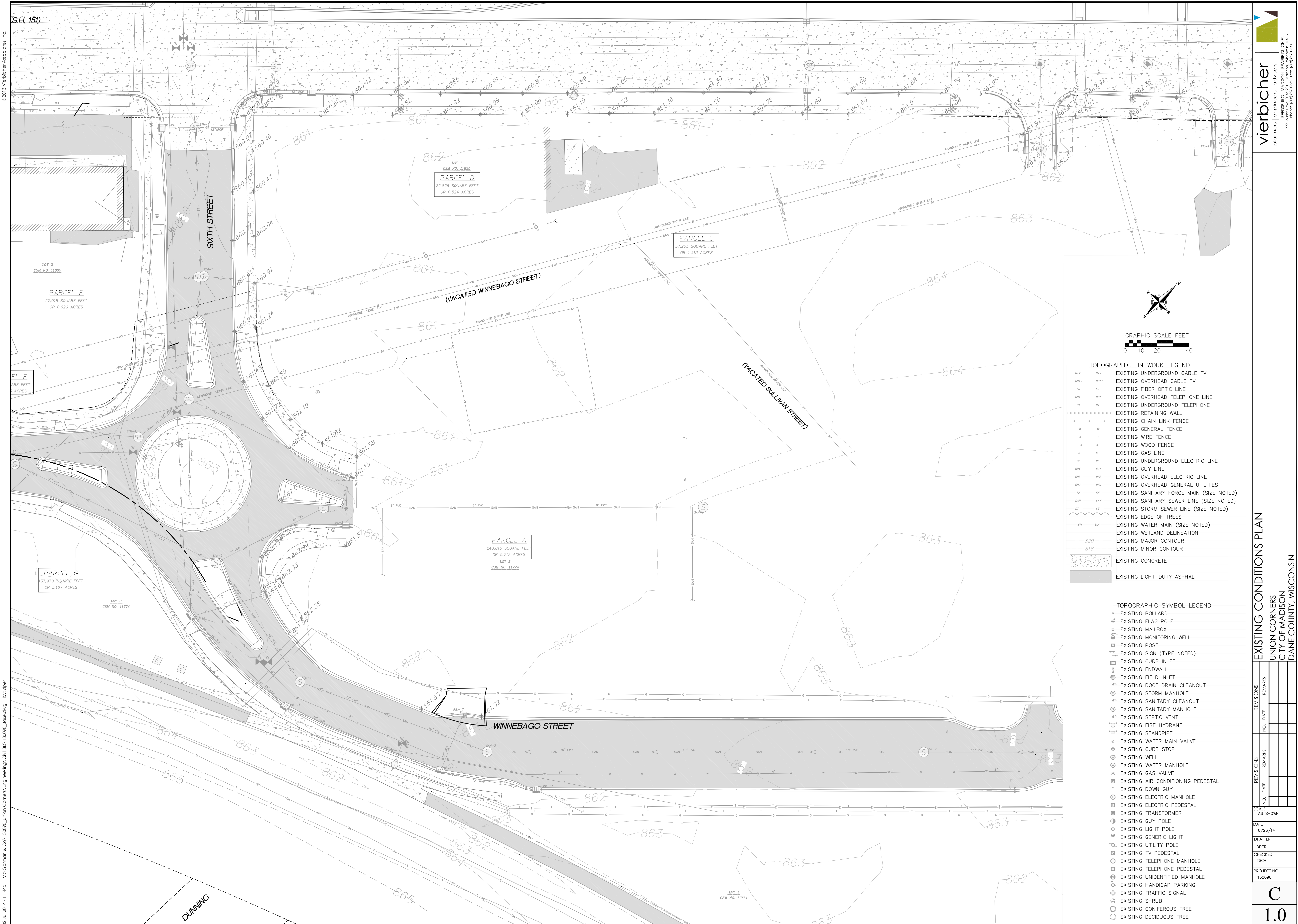


4 TRANSIT - SOUTH ELEVATION
402 1/8" = 1'-0"



3 TRANSIT - EAST ELEVATION
402 1/8" = 1'-0"

EXTERIOR FINISH PATTERNS		EXTERIOR ELEVATIONS - GENERAL NOTES	
	STONE	A.	PAINT ALL EXPOSED STEEL LINTELS TO MATCH ADJACENT MASONRY COLOR
	BRICK	B.	TRIM ALL EXTERIOR LIGHTING FIXTURES, OUTLETS, HOSE BIBBS AND ALL OTHER SIDING PENETRATIONS WITH TRIM TO MATCH ADJ. SURFACE. (TYP.)
	CORRUGATED METAL SIDING	C.	REFER TO SHEET XXX FOR WINDOW FRAME ELEVATIONS
	VERTICAL METAL PANELS	D.	SEALANT COLORS TO MATCH ADJACENT FINISHED SURFACES.
	WOOD GRAINED MTL. PANELS		
NOTE #	EXTERIOR ELEVATION NOTE		



S.H. 151

© 2013 Viebicher Associates, Inc.

PARCEL E
 27,018 SQUARE FEET
 OR 0.620 ACRES

PARCEL D
 22,826 SQUARE FEET
 OR 0.524 ACRES

PARCEL C
 97,203 SQUARE FEET
 OR 1.313 ACRES

PARCEL A
 248,815 SQUARE FEET
 OR 5.712 ACRES

PARCEL G
 137,970 SQUARE FEET
 OR 3.167 ACRES

GRAPHIC SCALE FEET
 0 10 20 40

- TOPOGRAPHIC LINEWORK LEGEND**
- UTY UTY EXISTING UNDERGROUND CABLE TV
 - OHTV OHTV EXISTING OVERHEAD CABLE TV
 - FO FO EXISTING FIBER OPTIC LINE
 - OHT OHT EXISTING OVERHEAD TELEPHONE LINE
 - UT UT EXISTING UNDERGROUND TELEPHONE
 - R R EXISTING RETAINING WALL
 - C C EXISTING CHAIN LINK FENCE
 - G G EXISTING GENERAL FENCE
 - W W EXISTING WIRE FENCE
 - D D EXISTING WOOD FENCE
 - G G EXISTING GAS LINE
 - UE UE EXISTING UNDERGROUND ELECTRIC LINE
 - GUY GUY EXISTING GUY LINE
 - OHE OHE EXISTING OVERHEAD ELECTRIC LINE
 - OUG OUG EXISTING OVERHEAD GENERAL UTILITIES
 - FM FM EXISTING SANITARY FORCE MAIN (SIZE NOTED)
 - SAN SAN EXISTING SANITARY SEWER LINE (SIZE NOTED)
 - ST ST EXISTING STORM SEWER LINE (SIZE NOTED)
 - W W EXISTING EDGE OF TREES
 - WM WM EXISTING WATER MAIN (SIZE NOTED)
 - W W EXISTING WETLAND DELINEATION
 - 820 820 EXISTING MAJOR CONTOUR
 - 818 818 EXISTING MINOR CONTOUR
- EXISTING CONCRETE
 EXISTING LIGHT-DUTY ASPHALT

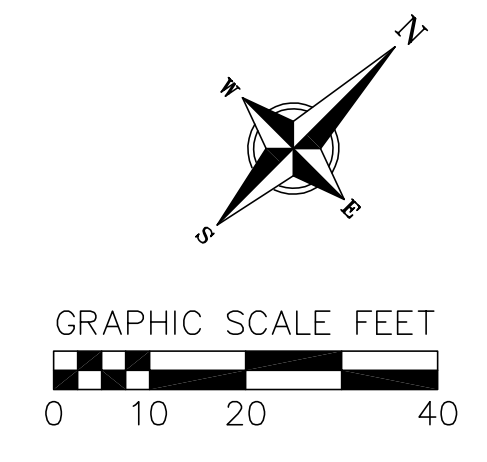
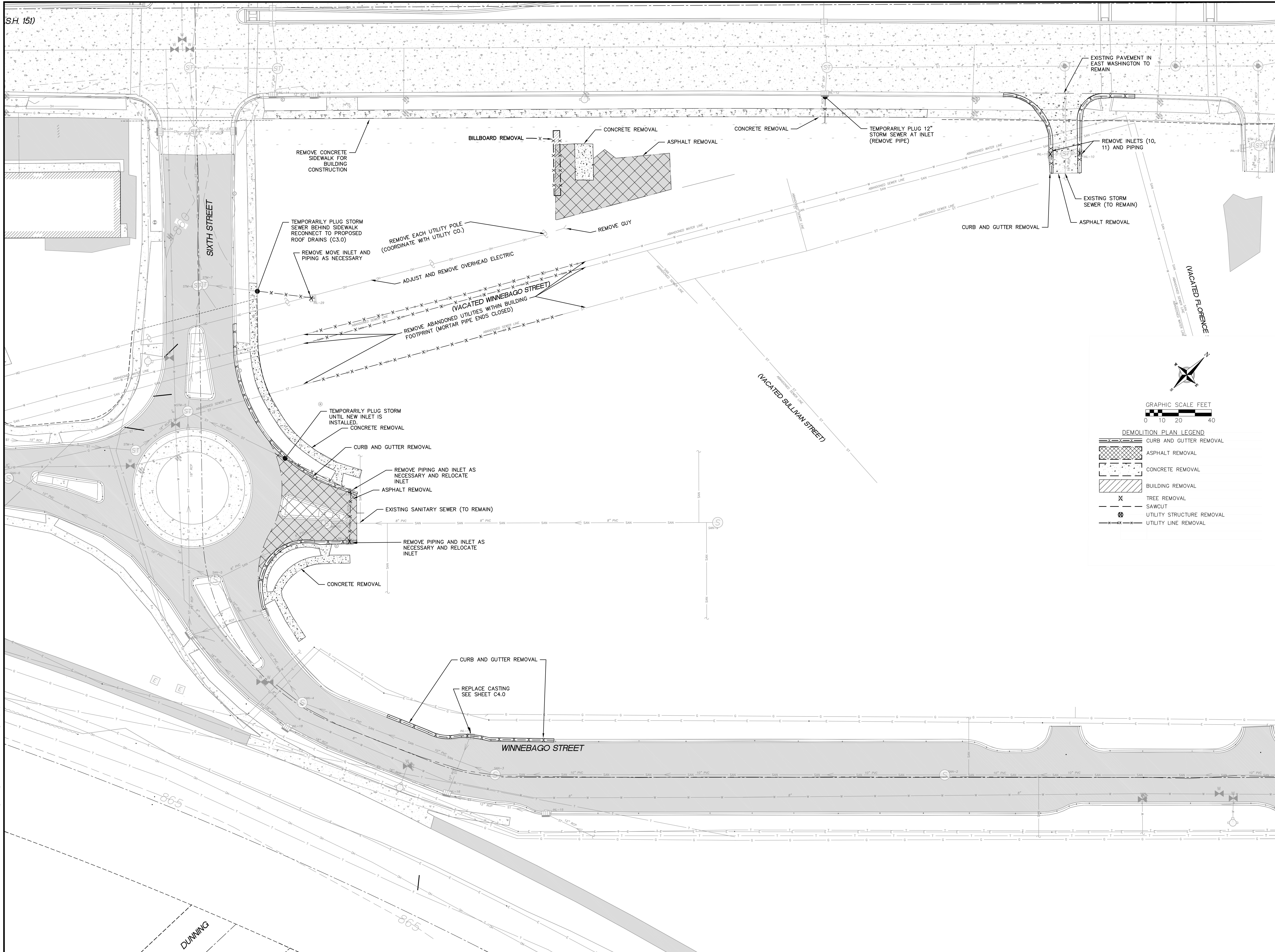
- TOPOGRAPHIC SYMBOL LEGEND**
- EXISTING BOLLARD
 - ⊕ EXISTING FLAG POLE
 - Ⓜ EXISTING MAILBOX
 - Ⓜ EXISTING MONITORING WELL
 - Ⓜ EXISTING POST
 - Ⓜ EXISTING SIGN (TYPE NOTED)
 - Ⓜ EXISTING CURB INLET
 - Ⓜ EXISTING ENDWALL
 - Ⓜ EXISTING FIELD INLET
 - Ⓜ EXISTING ROOF DRAIN CLEANOUT
 - Ⓜ EXISTING STORM MANHOLE
 - Ⓜ EXISTING SANITARY CLEANOUT
 - Ⓜ EXISTING SANITARY MANHOLE
 - Ⓜ EXISTING SEPTIC VENT
 - Ⓜ EXISTING FIRE HYDRANT
 - Ⓜ EXISTING STANDPIPE
 - Ⓜ EXISTING WATER MAIN VALVE
 - Ⓜ EXISTING CURB STOP
 - Ⓜ EXISTING WELL
 - Ⓜ EXISTING WATER MANHOLE
 - Ⓜ EXISTING GAS VALVE
 - Ⓜ EXISTING AIR CONDITIONING PEDESTAL
 - Ⓜ EXISTING DOWN GUY
 - Ⓜ EXISTING ELECTRIC MANHOLE
 - Ⓜ EXISTING ELECTRIC PEDESTAL
 - Ⓜ EXISTING TRANSFORMER
 - Ⓜ EXISTING GUY POLE
 - Ⓜ EXISTING LIGHT POLE
 - Ⓜ EXISTING GENERIC LIGHT
 - Ⓜ EXISTING UTILITY POLE
 - Ⓜ EXISTING TV PEDESTAL
 - Ⓜ EXISTING TELEPHONE MANHOLE
 - Ⓜ EXISTING TELEPHONE PEDESTAL
 - Ⓜ EXISTING UNIDENTIFIED MANHOLE
 - Ⓜ EXISTING HANDICAP PARKING
 - Ⓜ EXISTING TRAFFIC SIGNAL
 - Ⓜ EXISTING SHRUB
 - Ⓜ EXISTING CONIFEROUS TREE
 - Ⓜ EXISTING DECIDUOUS TREE

EXISTING CONDITIONS PLAN
 UNION CORNERS
 CITY OF MADISON
 DANE COUNTY, WISCONSIN

REVISIONS	NO.	DATE	REMARKS

SCALE AS SHOWN
 DATE 6/23/14
 DRAFTER DPFR
 CHECKED TSCH
 PROJECT NO. 130090
C
1.0

02 Jul 2014 11:44 AM:G:\Common & Co\130090_Union Corners\Engineering\Civil\3D\130090_Base.dwg by: dfr



DEMOLITION PLAN LEGEND

- CURB AND GUTTER REMOVAL
- ▨ ASPHALT REMOVAL
- ▩ CONCRETE REMOVAL
- ▧ BUILDING REMOVAL
- X TREE REMOVAL
- ⊗ UTILITY STRUCTURE REMOVAL
- X- UTILITY LINE REMOVAL

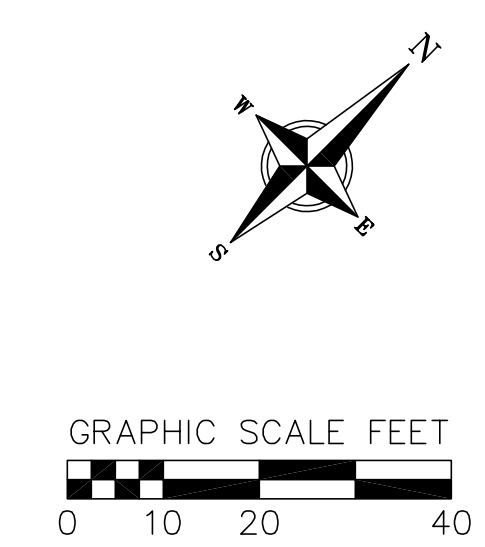
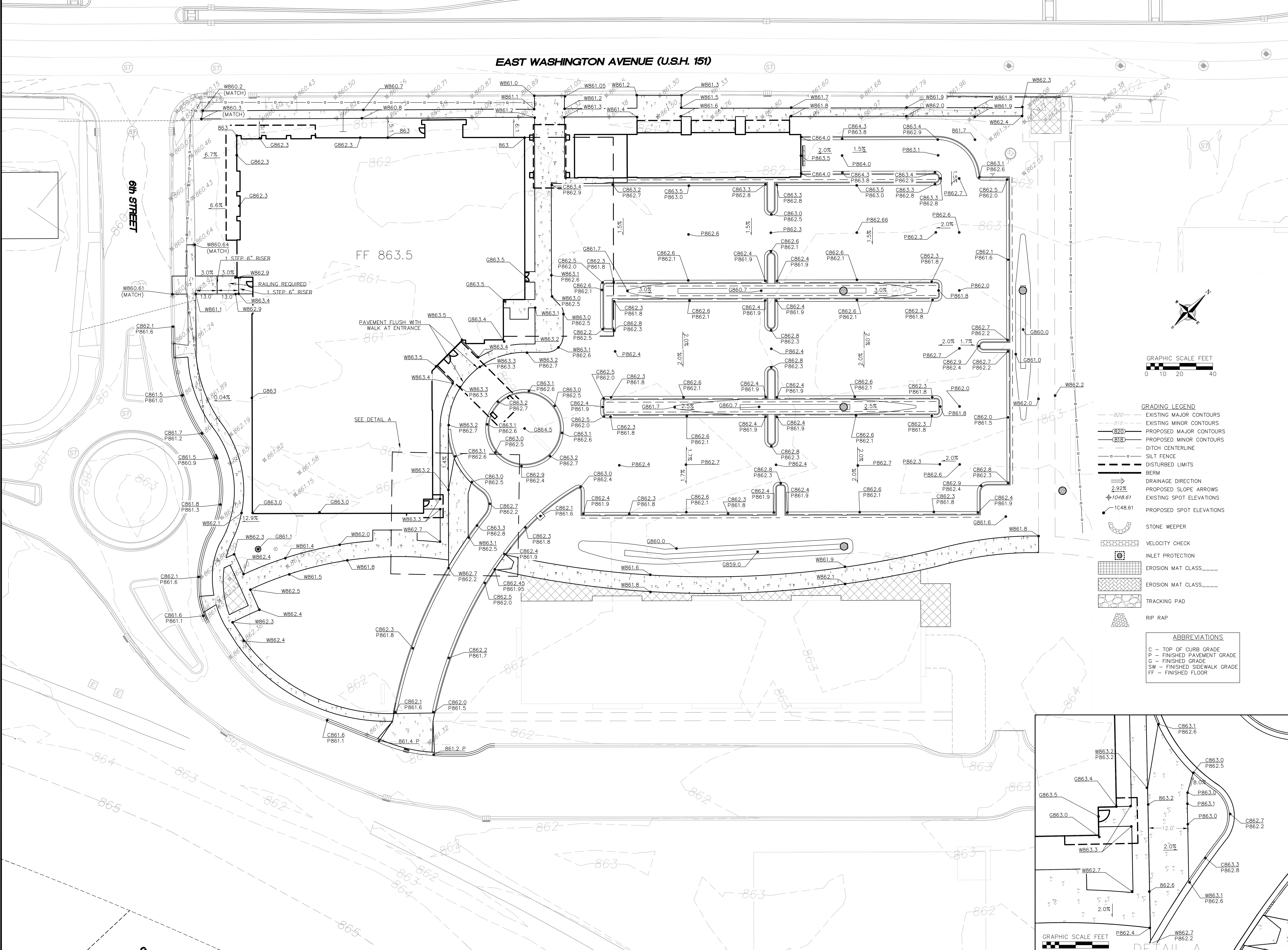
DEMOLITION PLAN
 UNION CORNERS
 CITY OF MADISON
 DANE COUNTY, WISCONSIN

REVISIONS	NO.	DATE	REMARKS

SCALE AS SHOWN

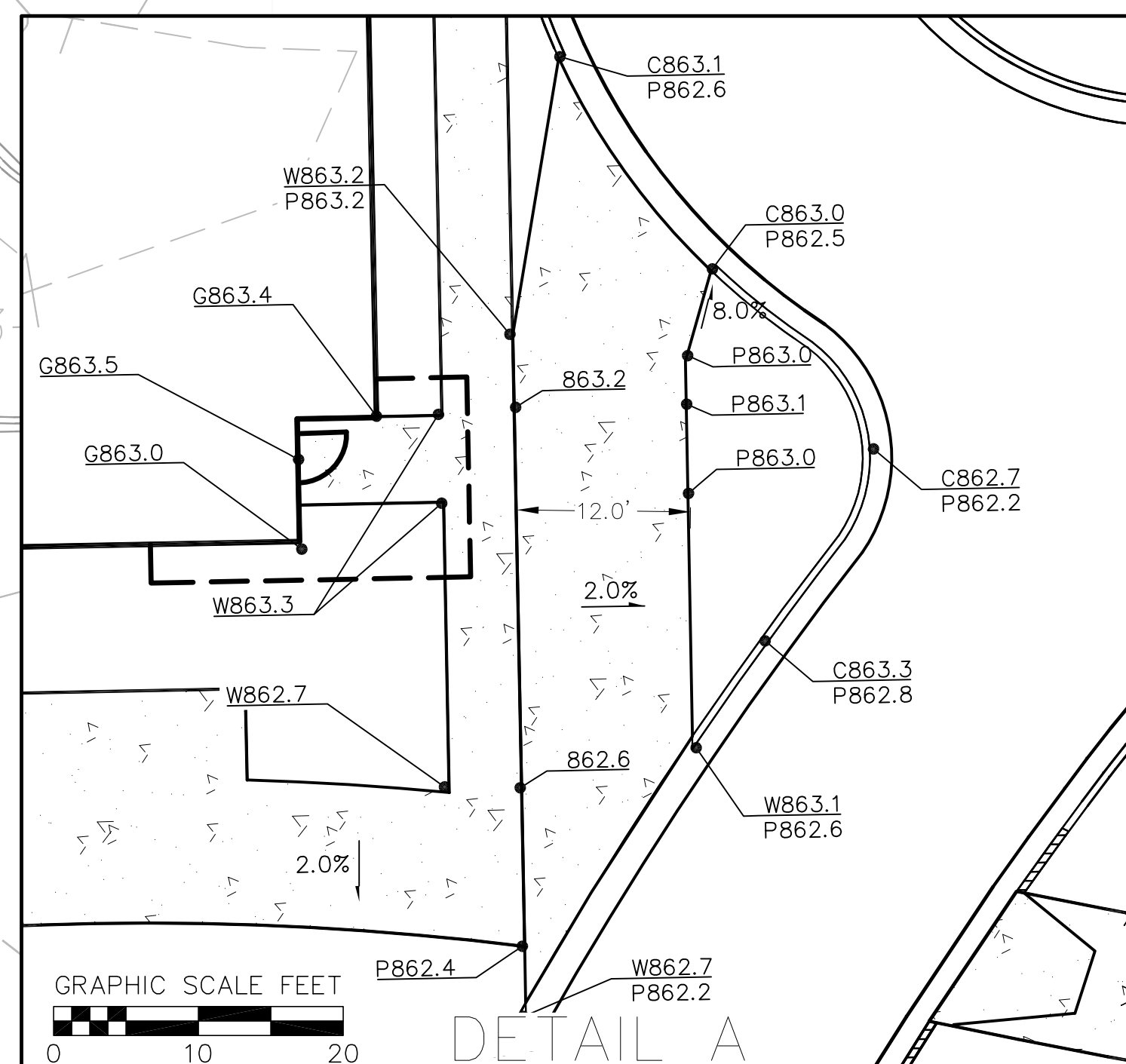
DATE	6/23/14
DRAFTER	DPER
CHECKED	TSCH
PROJECT NO.	130090

EAST WASHINGTON AVENUE (U.S.H. 151)



- GRADING LEGEND**
- 820- EXISTING MAJOR CONTOURS
 - 818- EXISTING MINOR CONTOURS
 - 820- PROPOSED MAJOR CONTOURS
 - 818- PROPOSED MINOR CONTOURS
 - - - DITCH CENTERLINE
 - - - SILT FENCE
 - - - DISTURBED LIMITS
 - - - BERM
 - - - DRAINAGE DIRECTION
 - 2.92% PROPOSED SLOPE ARROWS
 - 1048.61 EXISTING SPOT ELEVATIONS
 - 1C48.61 PROPOSED SPOT ELEVATIONS
 - STONE WEEPER
 - VELOCITY CHECK
 - INLET PROTECTION
 - EROSION MAT CLASS _____
 - EROSION MAT CLASS _____
 - TRACKING PAD
 - RIP RAP

- ABBREVIATIONS**
- C - TOP OF CURB GRADE
 - P - FINISHED PAVEMENT GRADE
 - G - FINISHED GRADE
 - SW - FINISHED SIDEWALK GRADE
 - FF - FINISHED FLOOR



GRADING AND EROSION CONTROL PLAN
 UNION CORNERS
 CITY OF MADISON
 DANE COUNTY, WISCONSIN

REVISIONS	NO.	DATE	REMARKS

SCALE AS SHOWN

DATE: 6/23/14

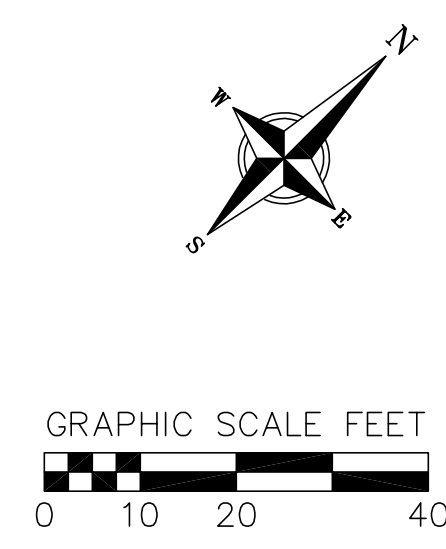
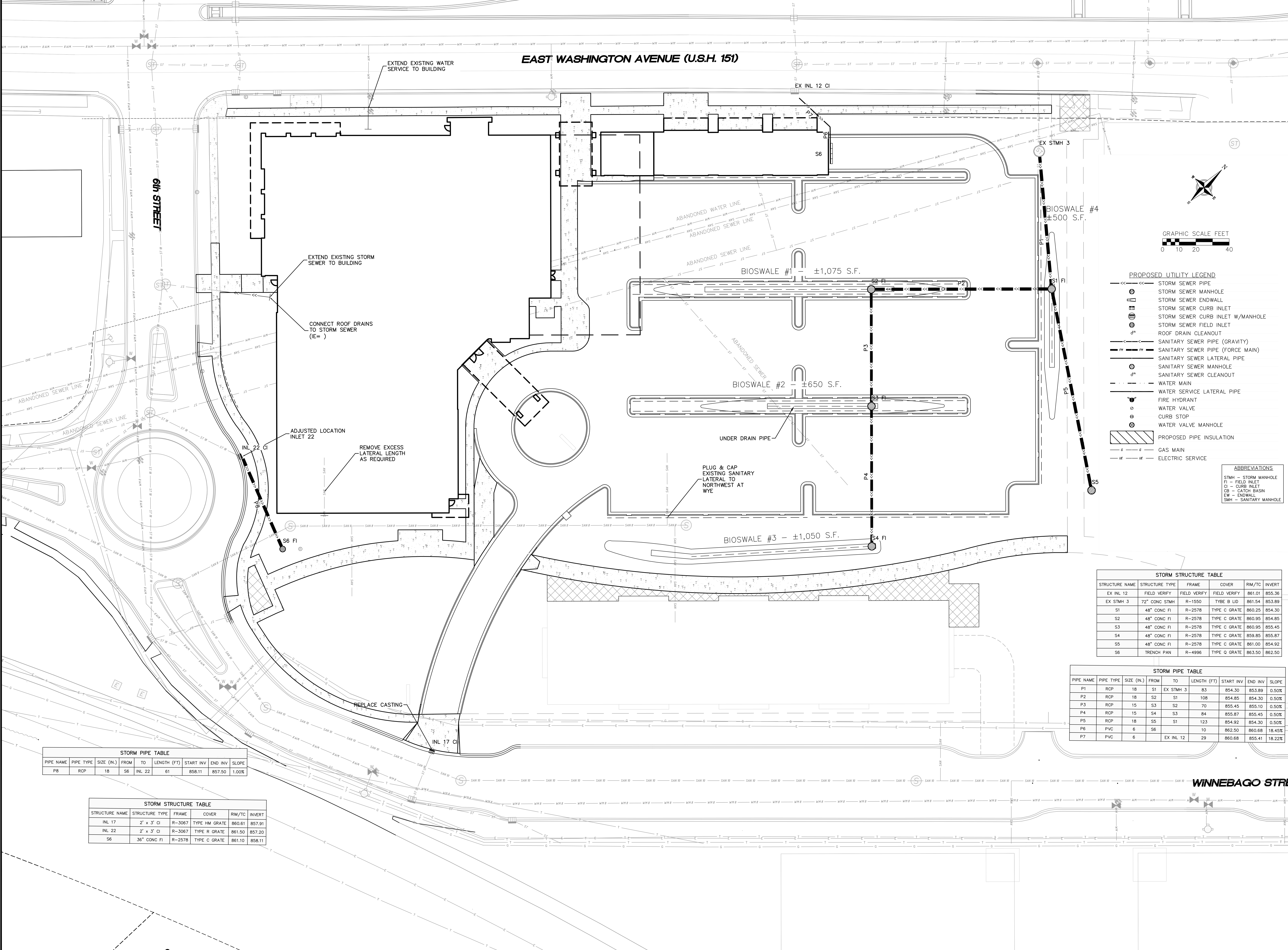
DRAFTER: DPBR

CHECKED: TSCH

PROJECT NO.: 130090

C

3.0



PROPOSED UTILITY LEGEND

- S Storm Sewer Pipe
- S Storm Sewer Manhole
- S Storm Sewer Endwall
- S Storm Sewer Curb Inlet
- S Storm Sewer Curb Inlet w/Manhole
- S Storm Sewer Field Inlet
- S Roof Drain Cleanout
- S Sanitary Sewer Pipe (Gravity)
- S Sanitary Sewer Pipe (Force Main)
- S Sanitary Sewer Lateral Pipe
- S Sanitary Sewer Manhole
- S Sanitary Sewer Cleanout
- S Water Main
- S Water Service Lateral Pipe
- S Fire Hydrant
- S Water Valve
- S Curb Stop
- S Water Valve Manhole
- S Proposed Pipe Insulation
- S Gas Main
- S Electric Service

ABBREVIATIONS

- STMH - Storm Manhole
- FI - Field Inlet
- CI - Curb Inlet
- CB - Catch Basin
- EW - Endwall
- SMH - Sanitary Manhole

STORM STRUCTURE TABLE

STRUCTURE NAME	STRUCTURE TYPE	FRAME	COVER	RM/TC	INVERT
EX INL 12	FIELD VERIFY	FIELD VERIFY	FIELD VERIFY	861.01	855.36
EX STMH 3	72" CONC STMH	R-1550	TYPE B LID	861.54	853.89
S1	48" CONC FI	R-2578	TYPE C GRATE	860.25	854.30
S2	48" CONC FI	R-2578	TYPE C GRATE	860.95	854.85
S3	48" CONC FI	R-2578	TYPE C GRATE	860.95	855.45
S4	48" CONC FI	R-2578	TYPE C GRATE	859.85	855.87
S5	48" CONC FI	R-2578	TYPE C GRATE	861.00	854.92
S6	TRENCH PAN	R-4996	TYPE Q GRATE	863.50	862.50

STORM PIPE TABLE

PIPE NAME	PIPE TYPE	SIZE (IN.)	FROM	TO	LENGTH (FT)	START INV	END INV	SLOPE
P1	RCP	18	S1	EX STMH 3	83	854.30	853.89	0.50%
P2	RCP	18	S2	S1	108	854.85	854.30	0.50%
P3	RCP	15	S3	S2	70	855.45	855.10	0.50%
P4	RCP	15	S4	S3	84	855.87	855.45	0.50%
P5	RCP	18	S5	S1	123	854.92	854.30	0.50%
P6	PVC	6	S6		10	862.50	860.68	18.45%
P7	PVC	6		EX INL 12	29	860.68	855.41	18.22%

STORM PIPE TABLE

PIPE NAME	PIPE TYPE	SIZE (IN.)	FROM	TO	LENGTH (FT)	START INV	END INV	SLOPE
P8	RCP	18	S6	INL 22	61	858.11	857.50	1.00%

STORM STRUCTURE TABLE

STRUCTURE NAME	STRUCTURE TYPE	FRAME	COVER	RM/TC	INVERT
INL 17	2' x 3' CI	R-3067	TYPE HM GRATE	860.61	857.91
INL 22	2' x 3' CI	R-3067	TYPE R GRATE	861.50	857.20
S6	36" CONC FI	R-2578	TYPE C GRATE	861.10	858.11

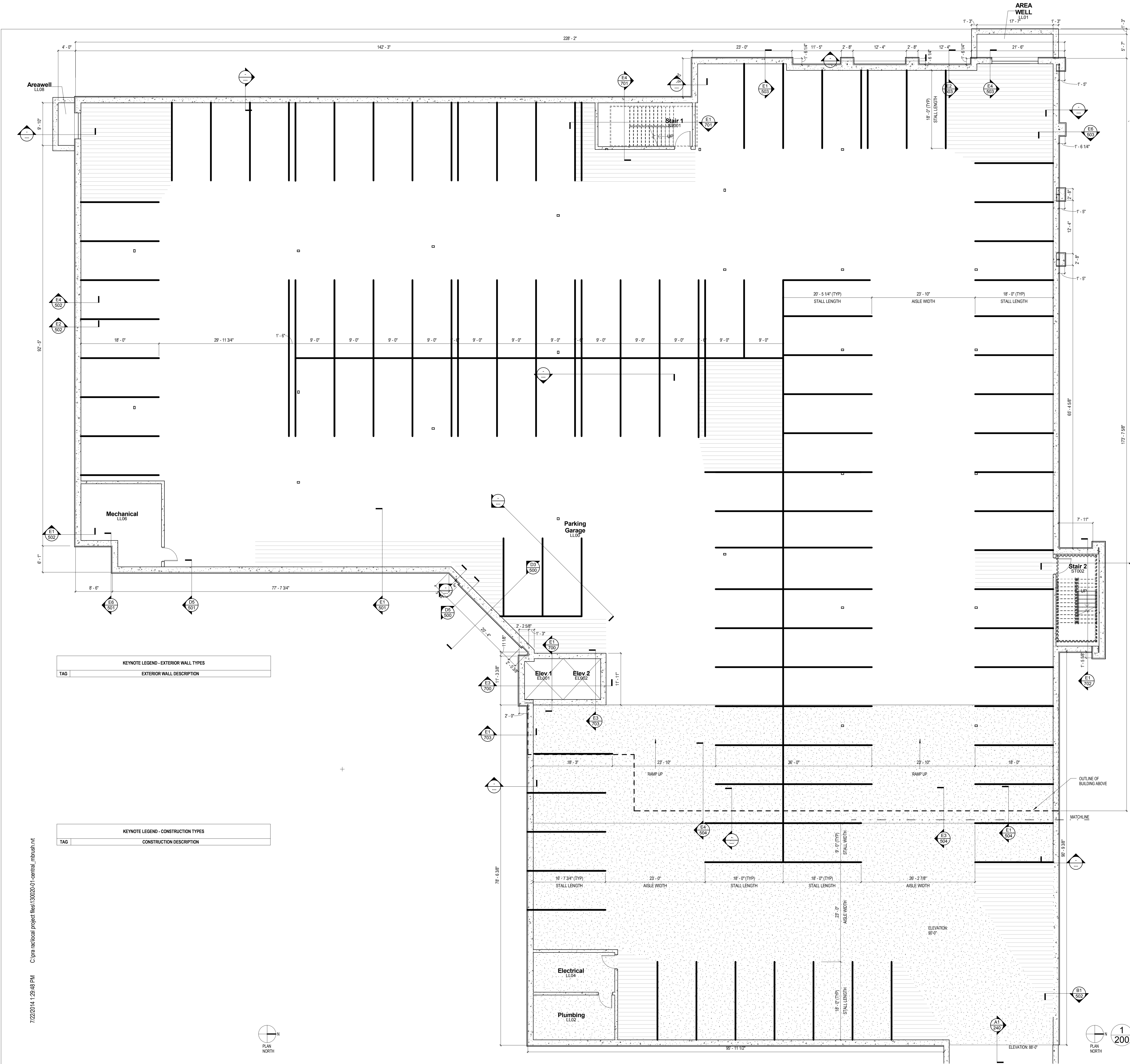
REVISIONS

NO.	DATE	REMARKS

SCALE AS SHOWN

DATE: 6/23/14
 DRAFTER: DPFR
 CHECKED: TSCH
 PROJECT NO.: 130090

C
4.0



FLOOR PLAN - SYMBOLS LEGEND

	NEW WALL/PARTITION		EXISTING WALL TO REMAIN
	NEW DOOR		EXISTING DOOR TO REMAIN
	SECTION REFERENCE		DETAIL REFERENCE
	EXTERIOR ELEVATION		EQUIPMENT
	INTERIOR ELEVATION		WINDOW TYPE
	FLOOR PLAN KEYNOTE		WALL/PARTITION TYPE
	CONSTRUCTION LIMITS		FLOOR DRAIN - PITCH FLOOR TO DRAIN
	ONE HOUR FIRE RESISTIVE CONSTRUCTION		
	TWO HOUR FIRE RESISTIVE CONSTRUCTION		

FLOOR PLAN - GENERAL NOTES

A. DIMENSIONS ON FLOOR PLAN ARE BASED ON FACE OF FINISHED WALL TO FACE OF FINISHED WALL (NOMINAL).

B. VERIFY ALL DIMENSIONS AND CONDITIONS AT JOB SITE. PORTIONS OF EXISTING CONSTRUCTION MAY HAVE BEEN REMOVED BY OWNER.

C. MAINTAIN CONTINUOUS UTILITY SERVICE TO ALL SPACES IN THE BUILDING NOT AFFECTED BY THIS WORK. COORDINATE WITH OWNER ANY DISRUPTION IN SERVICES REQUIRED TO PERFORM WORK OR TO MODIFY EXISTING PIPING, DUCTWORK OR ANY ASSOCIATED EQUIPMENT.

D. REFER TO SHEET ABX FOR ROOM FINISH SCHEDULE AND NOTES.

E. REFER TO SHEET ABX FOR DOOR SCHEDULES, DOOR TYPES, AND NOTES.

GYPSUM BOARD PARTITIONS - GENERAL NOTES

ALL GYPSUM BOARD PARTITIONS SHALL BE (A4) UNLESS OTHERWISE NOTED ON FLOOR PLAN.

GYPSUM BOARD PARTITION DIMENSIONS ON FLOOR PLAN ARE BASED ON FACE OF FINISHED PARTITION TO FACE OF FINISHED PARTITION (NOMINAL).

REFER TO GYPSUM BOARD SPECIFICATION FOR LOCATION AND TYPE(S) OF GYPSUM BOARD MATERIAL REQUIRED. PROVIDE TYPE 'X' FIBER FACED GYPSUM BOARD AT ALL FIRE RATED PARTITIONS.

SEAL ALL WALL PENETRATIONS AT PERIMETER AND FIRESTOP ALL FIRE RATED PARTITIONS.

EXTEND ALL GYPSUM BOARD PARTITIONS FULL HEIGHT TO UNDERSIDE OF STEEL DECK ABOVE. AT METAL DECK CONSTRUCTION ABOVE PROVIDE SLIP JOINT BETWEEN TOP OF PARTITION AND UNDERSIDE OF METAL DECK/ STRUCTURAL STEEL MEMBER ABOVE. REFER TO DETAIL XXXXX.

MASONRY PARTITIONS - GENERAL NOTES

MASONRY PARTITIONS INDICATED WITH THE FOLLOWING HATCH PATTERN:

ALL MASONRY PARTITIONS SHALL BE 8" CONCRETE BLOCK UNLESS OTHERWISE NOTED OR DIMENSIONED. REFER TO FLOOR PLAN FOR PARTITION THICKNESS.

PROVIDE UL RATED CONCRETE BLOCK AT ALL FIRE RATED PARTITIONS.

SEAL ALL WALL PENETRATIONS AT PERIMETER AND FIRESTOP ALL RATED PARTITIONS.

EXTEND CONCRETE BLOCK PARTITIONS FULL HEIGHT TO UNDERSIDE OF STEEL DECK ABOVE (OR PRECAST PLANK ABOVE IF APPLICABLE). REFER TO DETAIL XXXXX. PROVIDE HORIZONTAL MASONRY JOINT REINFORCEMENT AT 16" OC VERTICALLY. REFER TO STRUCTURAL DRAWINGS FOR VERTICAL REINFORCEMENT REQUIREMENTS.

NOTE #	FLOOR PLAN NOTE

KEYNOTE LEGEND - INTERIOR PARTITION TYPES

TAG	INTERIOR PARTITION DESCRIPTION
A4	INTERIOR STEEL STUD PARTITION: 3-5/8" STEEL STUDS @ 16" OC WITH 3" SOUND ATTENUATION INSULATION AND ONE LAYER 5/8" GYPSUM BOARD @ EACH FACE. PROVIDE 1 HR RATED UL #1488 DESIGN WHERE 1 HR CONSTRUCTION IS INDICATED ON PLANS.
BA4	INTERIOR CHASE (PLUMBING) PARTITION: DOUBLE WYTHE 3-5/8" STEEL STUDS @ 16" OC WITH 3-1/2" SOUND ATTENUATION INSULATION ONE SIDE ONLY AND ONE LAYER 5/8" GYPSUM BOARD @ EACH FACE.
F4	INTERIOR FLOORING (PARTITION): 3-5/8" STEEL STUDS @ 16" OC WITH ONE LAYER 5/8" GYPSUM BOARD.

KEYNOTE LEGEND - EXTERIOR WALL TYPES

TAG	EXTERIOR WALL DESCRIPTION

KEYNOTE LEGEND - CONSTRUCTION TYPES

TAG	CONSTRUCTION DESCRIPTION

1 LOWER LEVEL FLOOR PLAN
1/8" = 1'-0"

11000 West Park Drive, Milwaukee, Wisconsin 53224 T 414 359 2040
2310 Emerald Ave., Madison, Wisconsin 53716 T 608 248 9900
1613 Frutkin Road, Suite 3, Suncoast, Florida 34226 T 941 346 3618
www.pranich.com
intelligent designs. inspired results.

pra
PLUNKETT RAYSICH
ARCHITECTS, LLP

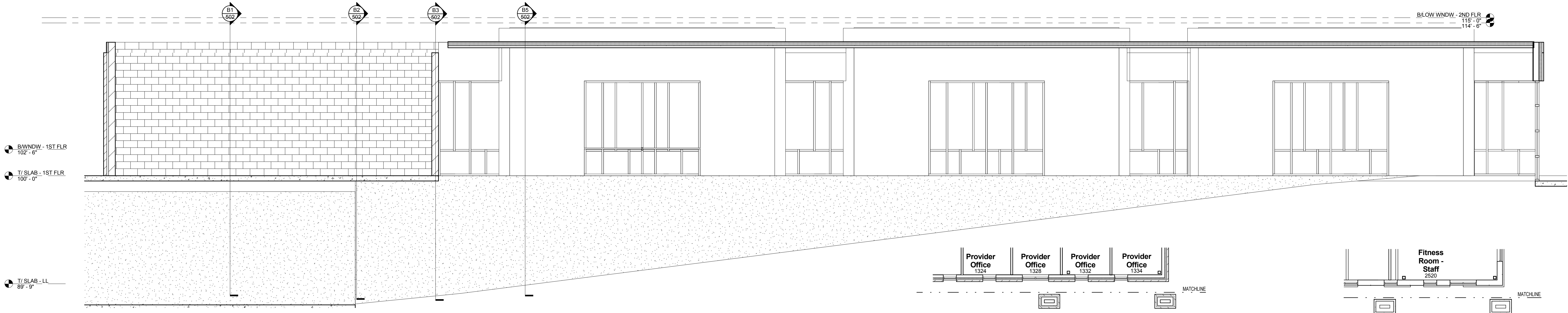
UW Health Union Corners Clinic
2401 E. Washington Ave, Madison, WI

Revisions

Drawn By: ADB
Date: 7/10/14
Job No.: 130020-01
Sheet No.: 200

NOT FOR CONSTRUCTION
© Plunkett Raysich Architects, LLP

7/22/2014 1:29:48 PM C:\pra\m\local\project files\130020-01\central_m\msh\nt



A1 RAMP SECTION
240 1/4" = 1'-0"

- FLOOR PLAN - SYMBOLS LEGEND**
- NEW WALL/PARTITION
 - NEW DOOR
 - SECTION REFERENCE
 - EXTERIOR ELEVATION
 - INTERIOR ELEVATION
 - FLOOR PLAN KEYNOTE
 - CONSTRUCTION LIMITS
 - ONE HOUR FIRE RESISTIVE CONSTRUCTION
 - TWO HOUR FIRE RESISTIVE CONSTRUCTION
 - EXISTING WALL TO REMAIN
 - EXISTING DOOR TO REMAIN
 - DETAIL REFERENCE
 - EQUIPMENT
 - WINDOW TYPE
 - WALL/PARTITION TYPE
 - FLOOR DRAIN - PITCH FLOOR TO DRAIN

FLOOR PLAN - GENERAL NOTES

- A. DIMENSIONS ON FLOOR PLAN ARE BASED ON FACE OF FINISHED WALL TO FACE OF FINISHED WALL (NOMINAL).
- B. VERIFY ALL DIMENSIONS AND CONDITIONS AT JOB SITE. PORTIONS OF EXISTING CONSTRUCTION MAY HAVE BEEN REMOVED BY OWNER.
- C. MAINTAIN CONTINUOUS UTILITY SERVICE TO ALL SPACES IN THE BUILDING NOT AFFECTED BY THIS WORK. COORDINATE WITH OWNER ANY DISRUPTION IN SERVICES REQUIRED TO PERFORM WORK OR TO MODIFY EXISTING PIPING, DUCTWORK OR ANY ASSOCIATED EQUIPMENT.
- D. REFER TO SHEET A8X FOR ROOM FINISH SCHEDULE AND NOTES.
- E. REFER TO SHEET A8X FOR DOOR SCHEDULES, DOOR TYPES, AND NOTES.

GYPSUM BOARD PARTITIONS - GENERAL NOTES

ALL GYPSUM BOARD PARTITIONS SHALL BE (A4) UNLESS OTHERWISE NOTED ON FLOOR PLAN.

GYPSUM BOARD PARTITION DIMENSIONS ON FLOOR PLAN ARE BASED ON FACE OF FINISHED PARTITION TO FACE OF FINISHED PARTITION (NOMINAL).

REFER TO GYPSUM BOARD SPECIFICATION FOR LOCATION AND TYPE(S) OF GYPSUM BOARD MATERIAL REQUIRED. PROVIDE TYPE 'X' FIRE RATED GYPSUM BOARD AT ALL FIRE RATED PARTITIONS.

SEAL ALL WALL PENETRATIONS AT PERIMETER AND FIRESTOP ALL FIRE RATED PARTITIONS.

EXTEND ALL GYPSUM BOARD PARTITIONS FULL HEIGHT TO UNDERSIDE OF STEEL DECK ABOVE. AT METAL DECK CONSTRUCTION ABOVE PROVIDE SLIP JOINT BETWEEN TOP OF PARTITION AND UNDERSIDE OF METAL DECK / STRUCTURAL STEEL MEMBER ABOVE. REFER TO DETAIL XXXXX.

MASONRY PARTITIONS - GENERAL NOTES

MASONRY PARTITIONS INDICATED WITH THE FOLLOWING HATCH PATTERN:

ALL MASONRY PARTITIONS SHALL BE 8" CONCRETE BLOCK UNLESS OTHERWISE NOTED OR DIMENSIONED. REFER TO FLOOR PLAN FOR PARTITION THICKNESS.

PROVIDE UL RATED CONCRETE BLOCK AT ALL FIRE RATED PARTITIONS.

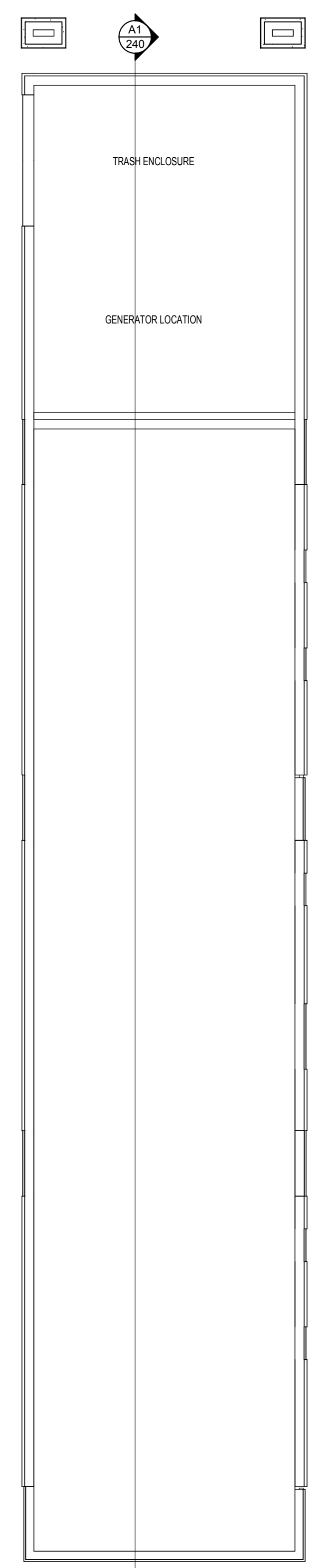
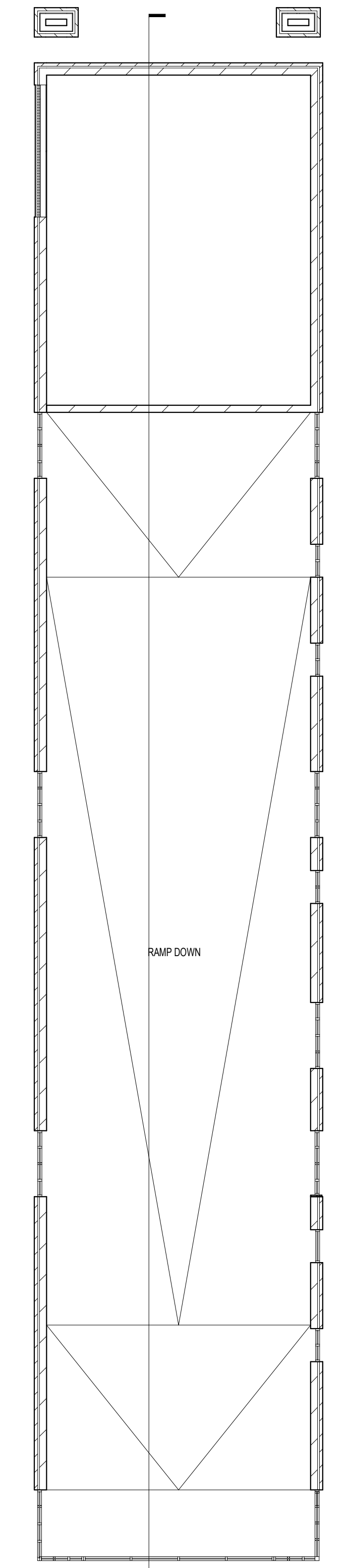
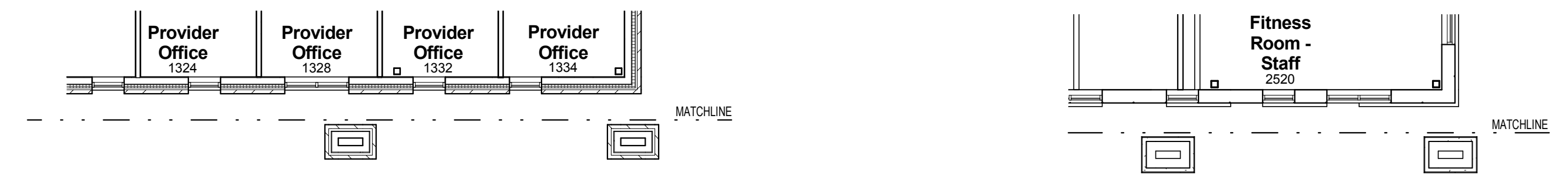
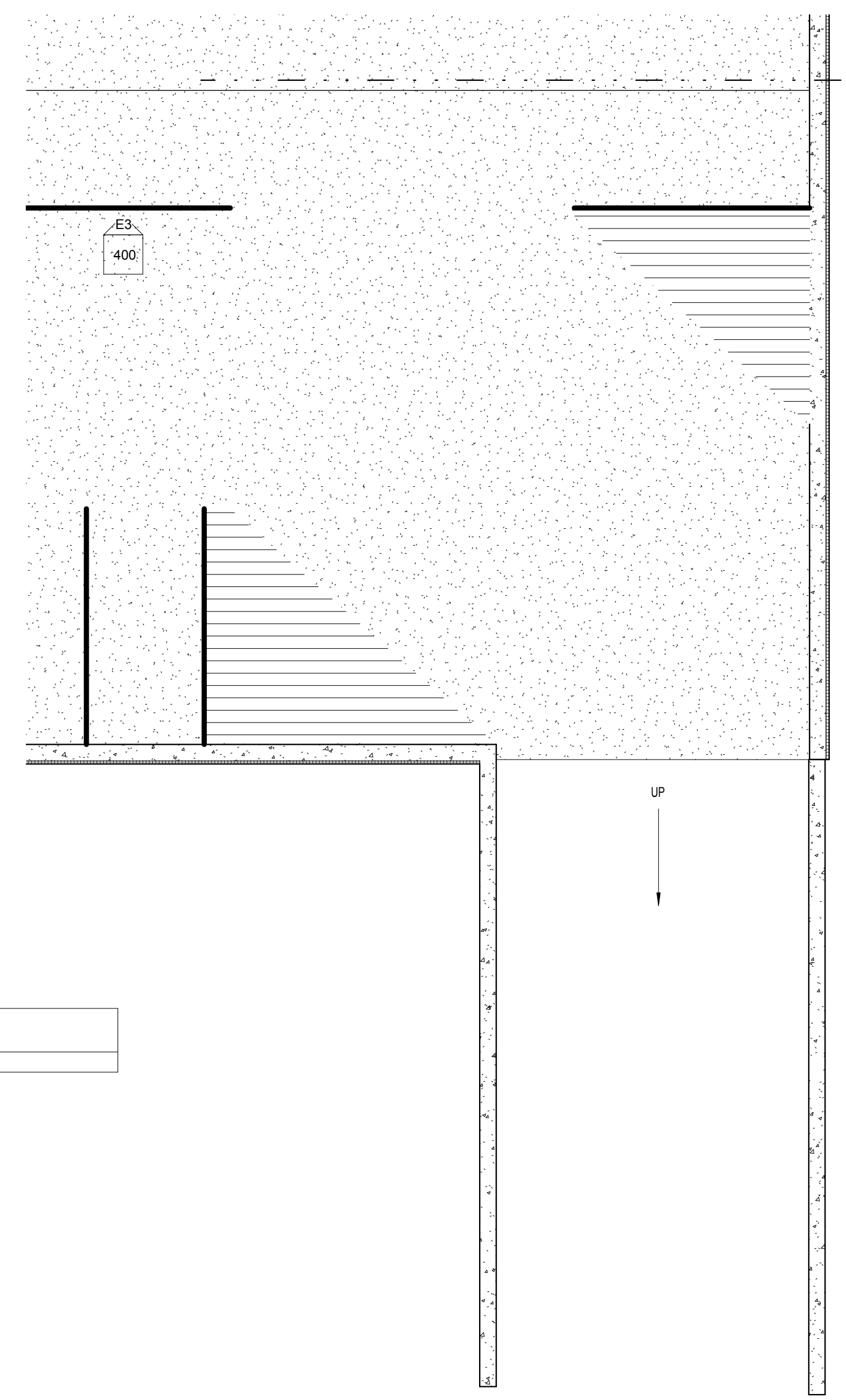
SEAL ALL WALL PENETRATIONS AT PERIMETER AND FIRESTOP ALL RATED PARTITIONS.

EXTEND CONCRETE BLOCK PARTITIONS FULL HEIGHT TO UNDERSIDE OF STEEL DECK ABOVE (OR PRECAST PLUMB ABOVE IF APPLICABLE). REFER TO DETAIL XXXXX. PROVIDE HORIZONTAL MASONRY JOINT REINFORCEMENT AT 16" OC VERTICALLY. REFER TO STRUCTURAL DRAWINGS FOR VERTICAL REINFORCEMENT REQUIREMENTS.

NOTE #	FLOOR PLAN NOTE
--------	-----------------

KEYNOTE LEGEND - EXTERIOR WALL TYPES	
TAG	EXTERIOR WALL DESCRIPTION

KEYNOTE LEGEND - INTERIOR PARTITION TYPES	
TAG	INTERIOR PARTITION DESCRIPTION
A4	INTERIOR STEEL STUD PARTITION: 3-5/8" STEEL STUDS @ 16" OC WITH 2" SOUND ATTENUATION INSULATION AND ONE LAYER 5/8" GYPSUM BOARD @ EACH FACE. PROVIDE 1 HR RATED UL RATED DESIGN WHERE 1 HR CONSTRUCTION IS INDICATED ON PLANS.
B4	INTERIOR CHASE (PLUMBING) PARTITION: DOUBLE 1/2" THICK 3-5/8" STEEL STUDS @ 16" OC WITH 3-1/2" SOUND ATTENUATION INSULATION (ONE SIDE ONLY) AND ONE LAYER 5/8" GYPSUM BOARD @ EACH FACE.
F4	INTERIOR FURRING (PARTITION): 3-5/8" STEEL STUDS @ 16" OC WITH ONE LAYER 5/8" GYPSUM BOARD.



3 LOWER LEVEL PLAN - RAMP
240 1/8" = 1'-0"

2 FIRST FLOOR PLAN - RAMP
240 1/8" = 1'-0"

1 ROOF PLAN - RAMP
240 1/8" = 1'-0"

7/22/2014 1:25:50 PM C:\pra\nc\locat\project\files\130020-01\central_mbrush.rvt



©2014 Plunkett Raysich Architects, LLP - 24 June 2014 - #130020-01

View from East Washington Ave. and 6th Street





©2014 Plunkett Raysich Architects, LLP - 24 June 2014 - #130020-01

View from Northeast



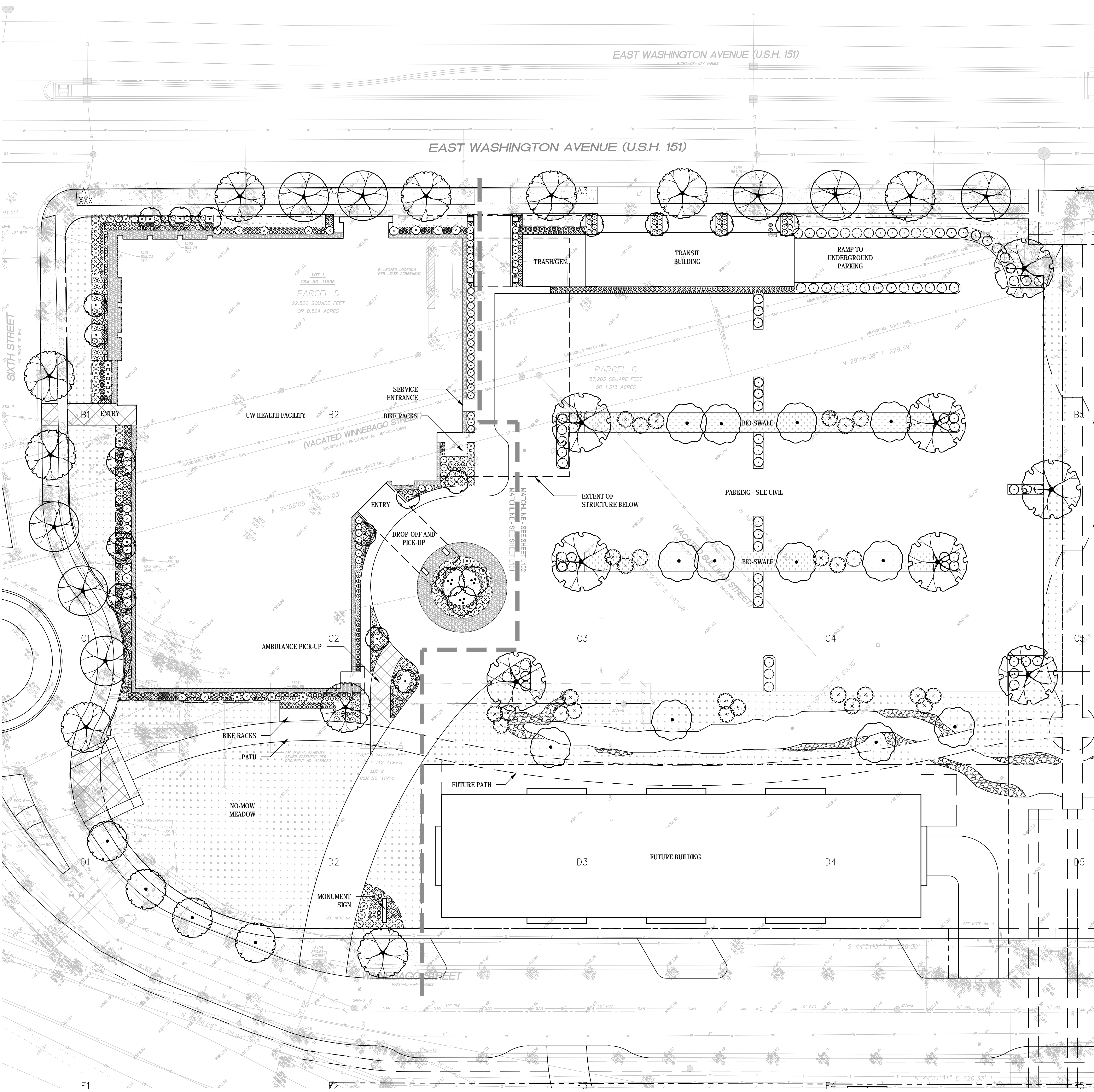
©2014 Plunkett Raysich Architects, LP - 24 June 2014 - #130020-01

View of Transit Hub from East Washington Ave.



©2014 Plunkett Raysich Architects, LLP - 24 June 2014 - #130020-01

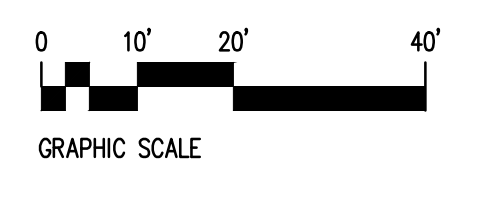
View of East Washington Ave. Entrance



PLANT-SCHEDULE	BOTANICAL NAME / COMMON NAME	CONT	CAL	SIZE
DECIDUOUS TREES				
	Amelanchier x grandiflora 'Cumulus' / Cumulus Serviceberry	B & B	1.5"Cal	6' H (MIN.)
	Betula nigra 'Duraheat' / Duraheat River Birch	B & B	2"Cal	6' H (MIN.)
	Carpinus betulus 'Franz Fontaine' / Franz Fontaine Hornbeam Select trees with dominant central leader	B & B	2"Cal	6' H (MIN.)
	Crataegus viridis 'Winter King' / 'Winter King' Hawthorn	B & B	MULTI-STEM	6' H (MIN.)
	Gleditsia triacanthos 'Skyline' / Skyline Honey Locust	B & B	3"Cal	6' H (MIN.)
	Gymnocladus dioica 'Espresso' / Kentucky Coffeetree	B & B	3"Cal	6' H (MIN.)
	Pyrus calleryana 'Autumn Blaze' / Autumn Blaze Pear	B & B	2"Cal	6' H (MIN.)
	Quercus rubra / Red Oak	A6	B & B	2"Cal
DECIDUOUS SHRUBS				
	Aronia arbutifolia 'Brilliantissima' / Brilliant Red Chokeberry/Red Chokeberry	3 gal		
	Juniperus chinensis 'Spartan' / Spartan Juniper	5 gal		
	Rhus aromatica 'Gro-Low' / Gro-Low Fragrant Sumac	3 gal		
	Rhus glabra / Smooth Sumac	3 gal		
	Ribes alpinum 'Green Mound' / Green Mound Alpine Currant	3 gal		
	Spiraea betulifolia 'Tor' / Birchleaf Spiraea	3 gal		
EVERGREEN SHRUBS				
	Juniperus sabina 'Broadmoor' / Broadmoor Juniper	3 gal		
HERBACEOUS PERENNIALS				
	Achillea millefolium 'Summer Berries' / Summer Berries Yarrow	1 gal		
	Allium tanguticum 'Summer Beauty' / Summer Beauty Globe Lily	1 gal		
	Amsonia hubrichtii 'Halfway to Arkansas' / Arkansas Blue-star	1 gal		
	Calamintha nepeta ssp. nepeta / Lesser Calamint	1 gal		
	Perovskia atriplicifolia 'Little Spire' TM / Little Spire Russian Sage	1 gal		
	Sedum x 'Autumn Joy' / Autumn Joy Sedum	1 gal		
ORNAMENTAL GRASSES				
	Calamagrostis x acutiflora 'Karl Foerster' / Feather Reed Grass	1 gal		
	Molinia caerulea 'Moorflame' / Moor Grass	1 gal		
	Panicum virgatum 'North Wind' / Northwind Switch Grass	1 gal		
	Panicum virgatum 'Shenandoah' / Burgundy Switch Grass	1 gal		
	Schizachyrium scoparium 'Blue Heaven' / Blue Heaven Little Bluestem	1 gal		
	Sporobolus heterolepis 'Tara' / Prairie Dropseed	1 gal		
VINE/ESPALIER				
	Actinidia kolomikta / Actinidia	3 gal		
	Humulus lupulus 'Aureus' / Golden Hops	3 gal		

- NO-MOW MEADOW
- BIO-SWALE - SEE CIVIL
- MADISON PARKS SEED MIX
- DECORATIVE STONE MULCH

NOTE: SEE ARCHITECTURE AND CIVIL DRAWINGS FOR LAYOUT OF ROAD, PARKING LOT AND PATHS.



1"=20'-0"

PLANTING PLAN

PROGRESS PLOT DATE: 6-24-2014
 © 2014 Plunkett Roysich Architects, LLP

Revisions:
DATE: XXX
DATE: XXX
DATE: XXX
DATE: XXX
DATE: 6/25/14
DATE: 5/21/14
DATE: 5/20/14
Drawn By:
KSD
Date:
4-23-14
Job No.:
130020-01
Sheet No.:
L 100

Gorman & Company - UW Health Union Corners Clinic
 Madison, WI

prad
 LANDSCAPE ARCHITECTS

11000 west park place milwaukee, wisconsin 53224 414.359.9000
 2510 conesroads drive suite 2000 madison, wisconsin 53718 608.249.9000
 1613 fuellville road suite 3 sarasota, florida 34236 941.348.8616
 intelligent designs. inspired results. | www.prarch.com

Plunkett Roysich Architects, LLP - June 24, 2014 - 12:11pm
 Q:\2013-018 UW Health Union Corners\01-CAD\Sheets.dwg [L100] porter