

SIDEWALK ALONG LAKE

NEW DOUBLE BASKETBALL COURT
NEW PATH

REROUTE ELECTRICAL AND
REPLACE PARKING LOT/AREA
LIGHTS - MATCH NEW LIGHTS
ALONG WALKWAY

REMOVE 2 TREES

RAIN GARDEN SIZED
FOR NEW PARKING LOT

NEW PARKING LOT FOR GATES OF HEAVEN
OLD LOT HAD 12 REGULAR STALLS AND 1 HC
NEW LOT HAS 29 REGULAR STALLS AND 2 HC

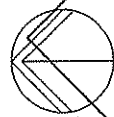
SAVE 2 TREES

GORHAM

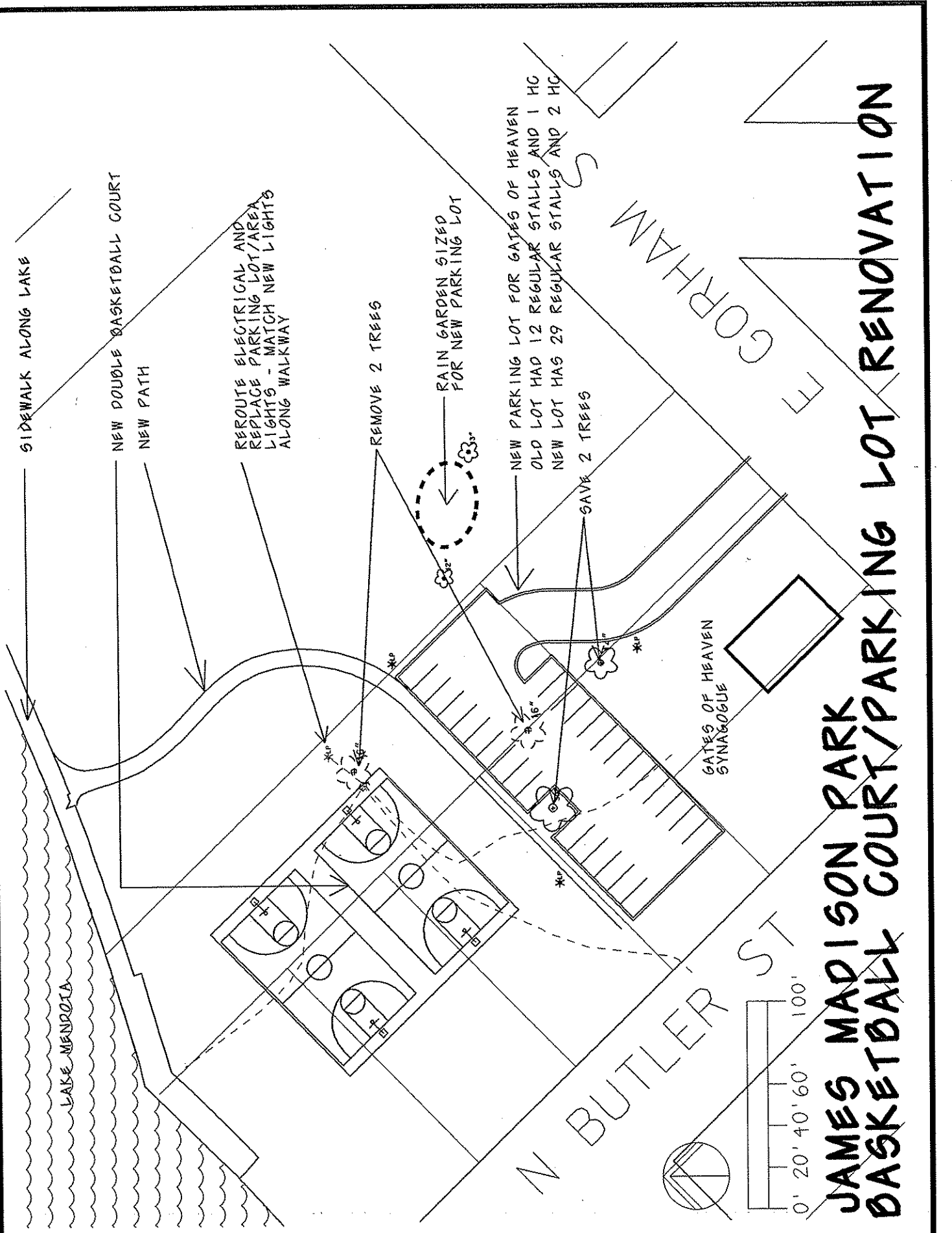
GATES OF HEAVEN
SYNAGOGUE

N BUTLER ST

LAKE MENORCA

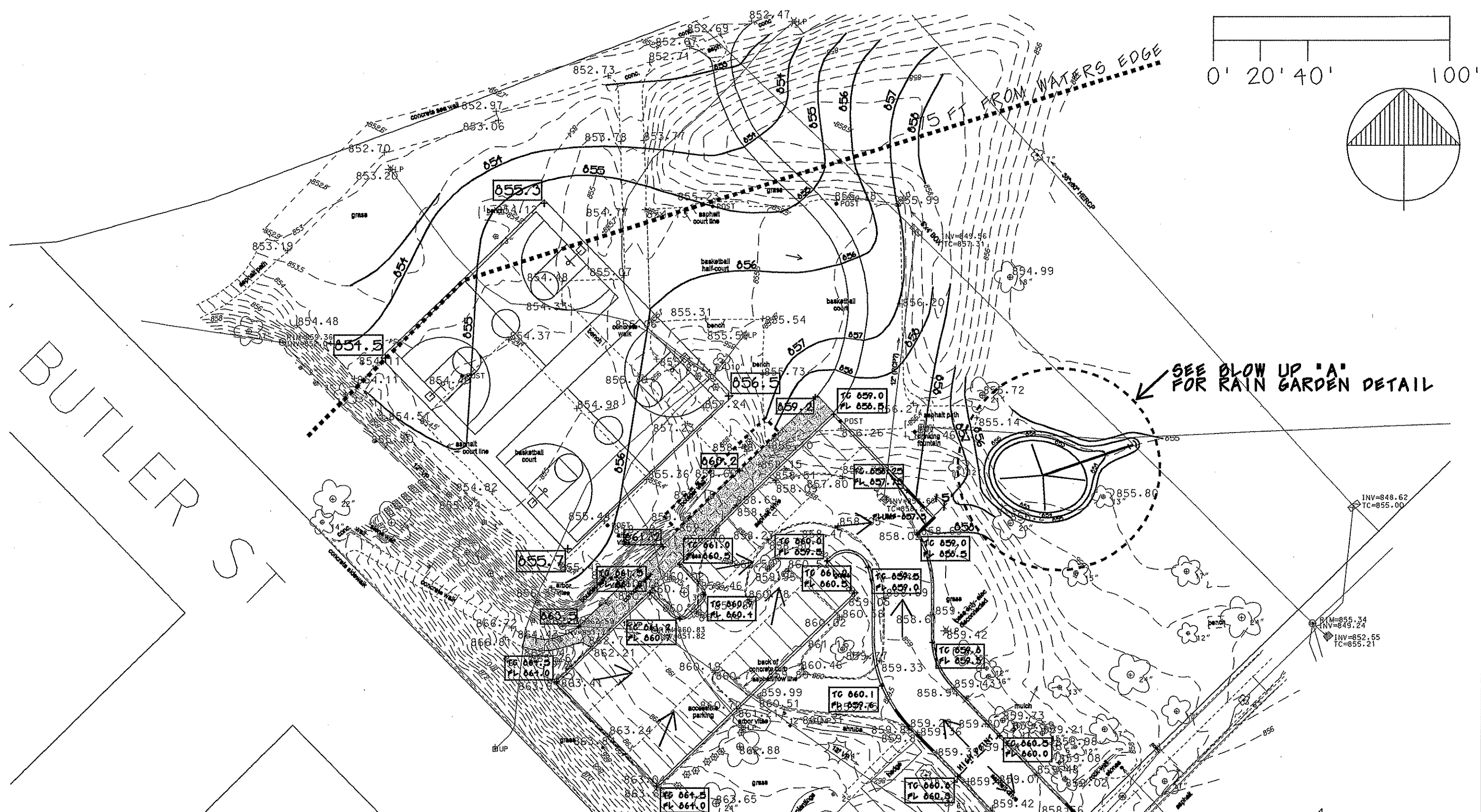
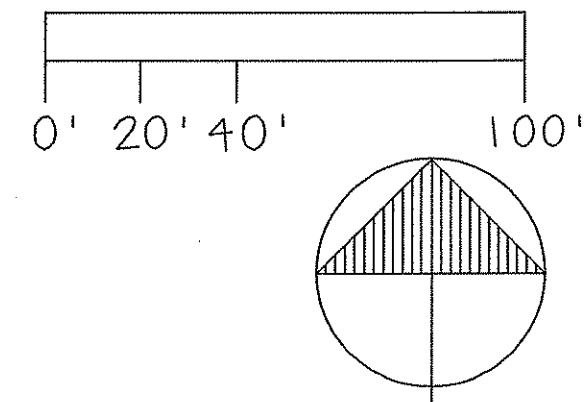


JAMES MADISON PARK BASKETBALL COURT/PARKING LOT RENOVATION



JAMES MADISON PARK BASKETBALL COURT/PARKING LOT RENOVATION

BUTLER ST



HYD/CP006
HYD TOP NUT
N=84751.9700
E=821181.6000
ELEV=858.7400

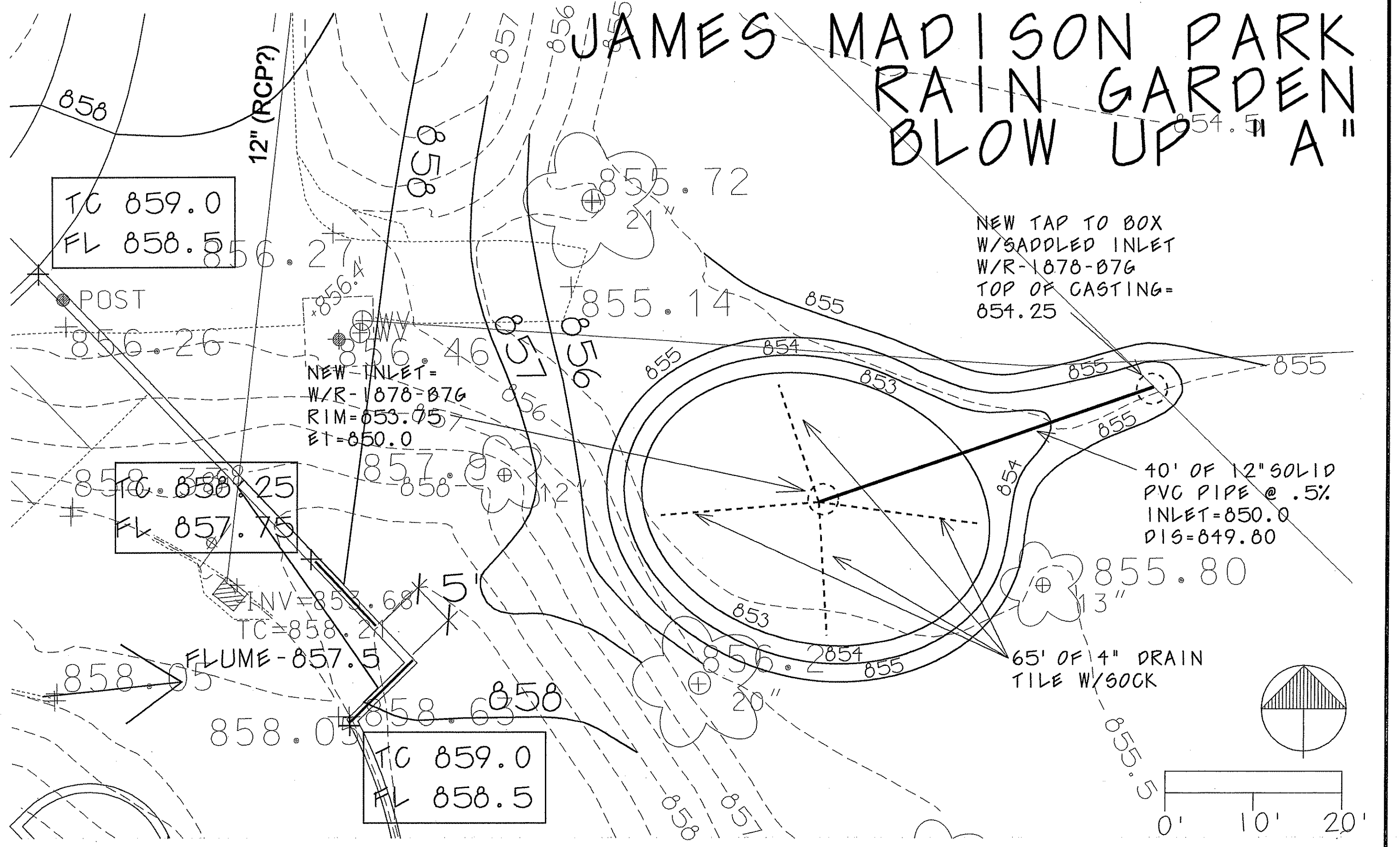
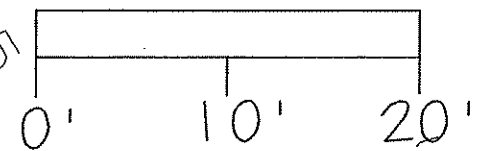
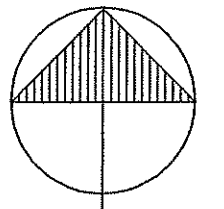
JAMES MADISON PARK RAIN GARDEN BLOW UP "A"

NEW TAP TO BOX
W/SADDLED INLET
W/R-1878-876
TOP OF CASTING=
854.25

NEW INLET=
W/R-1878-876
RIM=853.75
ET=850.0

40' OF 12" SOLID
PVC PIPE @ .5%
INLET=850.0
DIS=849.80

65' OF 4" DRAIN
TILE W/SOCK



TC 859.0
FL 858.5

TC 858.25
FL 857.75

TC 859.0
FL 858.5

INV=857.68
TC=858.21
FLUME-857.5

POST

12" (RCP?)

858

858

855.72

855.14

855

854.5

"A"

855

855

855

855.80

13"

853

854

855

856

856

857

858

858

858.05

858.65

857.68

856.46

856.27

856.26

856

856

856

857

858

858

857

856

855

21"

5'

5'

20"

855.5