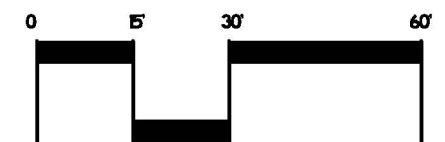


Badger sculpture, by Harry Whitehorse (requires bronze casting)



CRAZY LEGS PLAZA  
9/13/2017  
SCALE 1"=30'



**KEN SAIKI DESIGN**  
LANDSCAPE ARCHITECTS

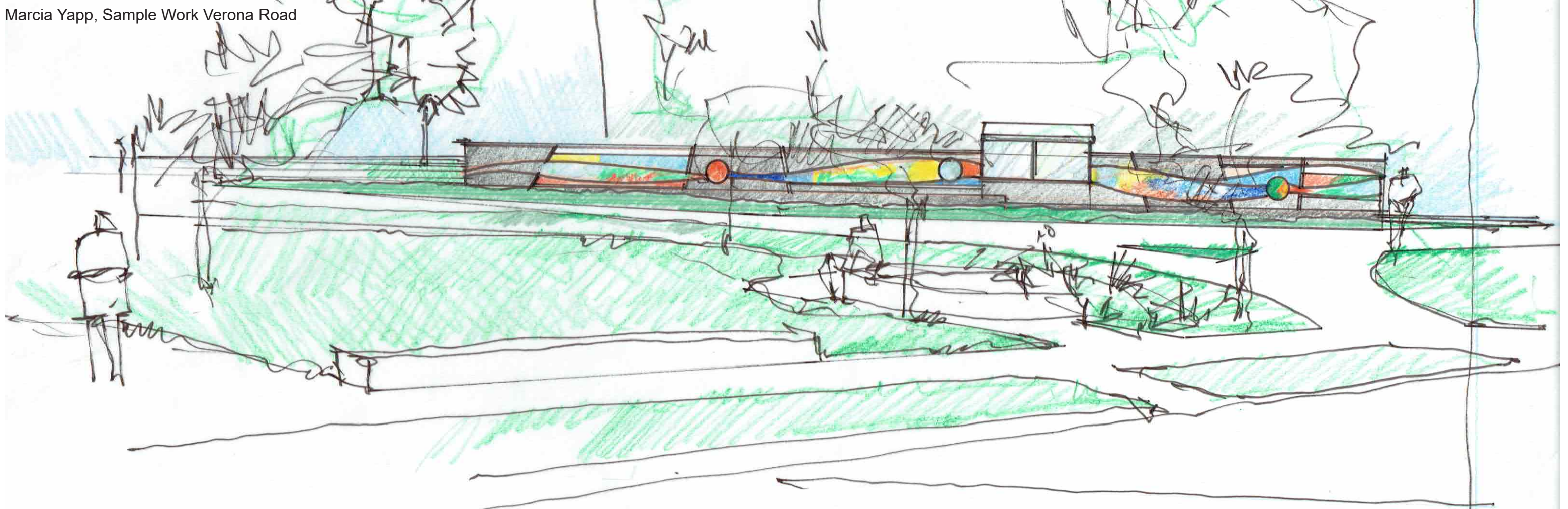
303 S. PATERSON  
SUITE ONE  
MADISON, WI 53703  
Phone: 608 251-3600

# Crazylegs Plaza

Madison, WI | October 10, 2017



Marcia Yapp, Sample Work Verona Road



Crazylegs wall is retaining grade along Regent St. above bike path. Some areas require a railing height barrier. The concept suggests mosaic panels set within a cast in place concrete wall. Round forms suggest "porthole" penetrations through the wall that would be lighted, and overlaying mosaics at those locations would be colored glass. The portholes would add light accent to the bus shelter side of the wall. The wall is generally parallel to the bike path; its character is motion oriented. Wall panels could have slanted joints to accentuate the motion theme. This wall could also hold a plaque recognizing Elroy Hirsch.

# Crazylegs Plaza Mosaic Wall Sketch

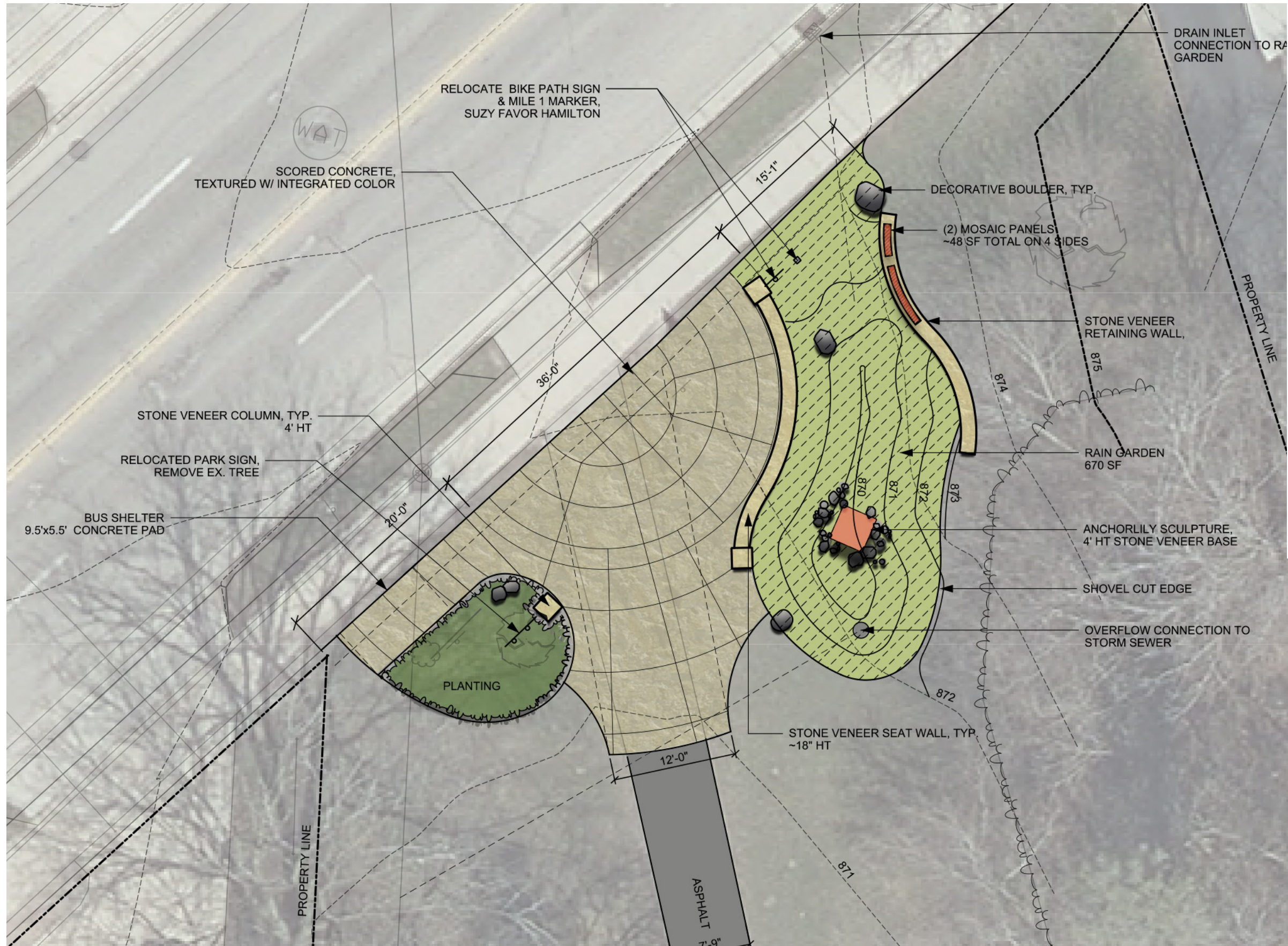
Madison, WI | October 10, 2017

2 of 4

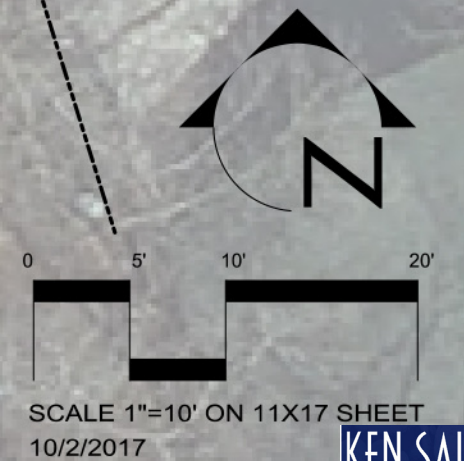
**KEN SAIKI DESIGN**

LANDSCAPE  
ARCHITECTS

303 S. PATERSON  
SUITE ONE  
MADISON, WI 53703  
Phone: 608 251-3600



Anchorlily 2, by William Turnbull



**KEN SAIKI DESIGN**

LANDSCAPE ARCHITECTS

303 S. PATERSON  
SUITE ONE  
MADISON, WI 53703  
Phone: 608 251-3600

# Wingra Park Entrance

Madison, WI | October 10, 2017

REFERENCE IMAGERY:



Arboretum Wall (Veneer Interpretation)



View Looking East to Anchorlily & Mosaic Retaining Wall (Mosaic Imagery TBD)



View Looking West



View From Monroe St. into Wingra Park

# Wingra Park Entrance Modeling

Madison, WI | October 10, 2017

4 of 4

**KEN SAIKI DESIGN**

LANDSCAPE  
ARCHITECTS

303 S. PATERSON  
SUITE ONE  
MADISON, WI 53703  
Phone: 608 251-3600