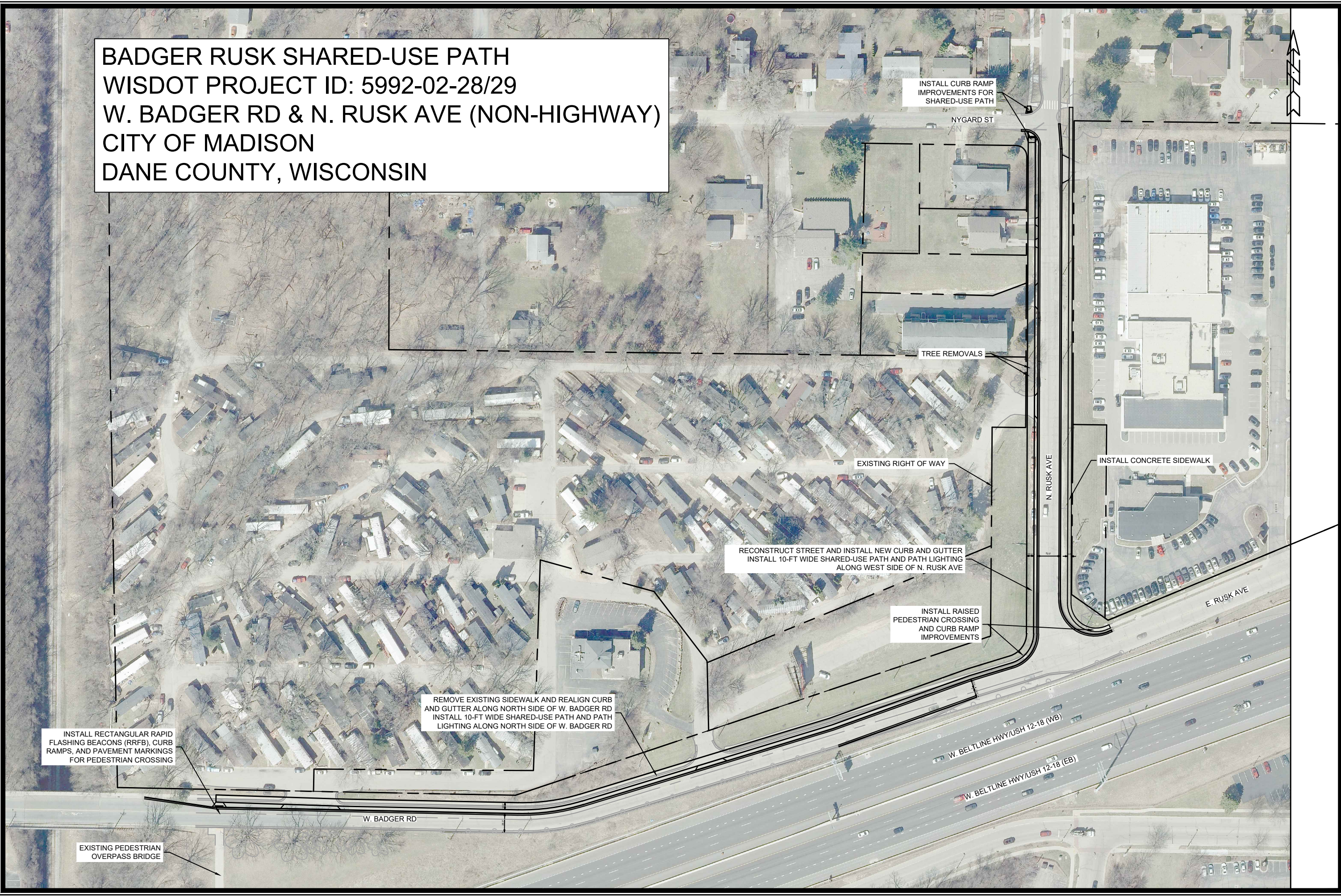


BADGER RUSK SHARED-USE PATH
WISDOT PROJECT ID: 5992-02-28/29
W. BADGER RD & N. RUSK AVE (NON-HIGHWAY)
CITY OF MADISON
DANE COUNTY, WISCONSIN



MARK	REVISION	DATE	BY

14143
MADISON, WI
8723
CONTRACT NO:

PROJECT OVERVIEW
BADGER RUSK SHARED-USE PATH

M:\DESIGN\Projects\14143\CAD\Streets\14143EN-Corridor.dwg



14143
PO-1

Scale: 1:120 XREF
Date: 07/24/2024 10:03 AM
Designed By: ##
14143
PO-1