

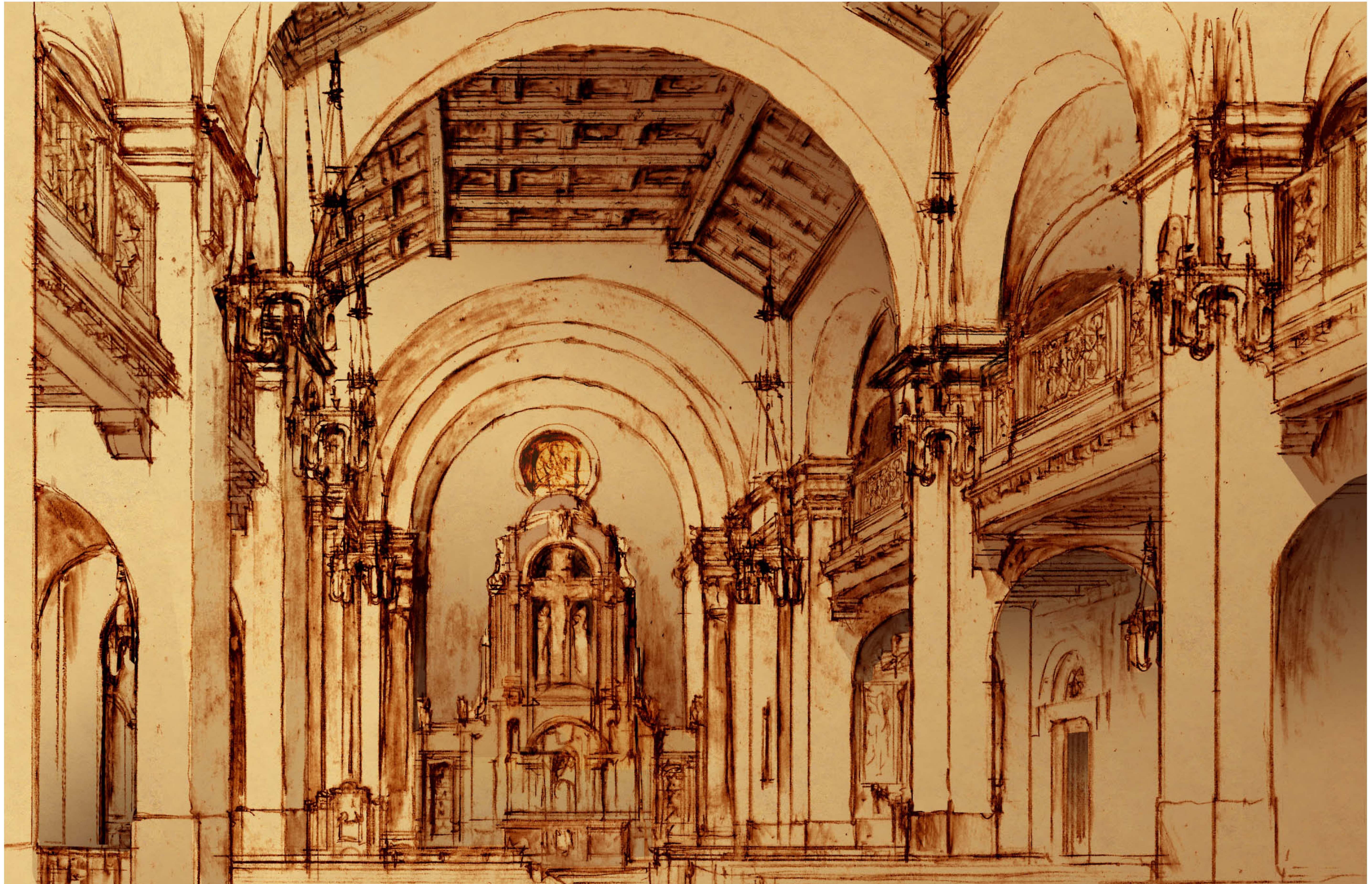


Fitch Court Elevation · One-eighth of an inch equals one foot



View from Library Mall













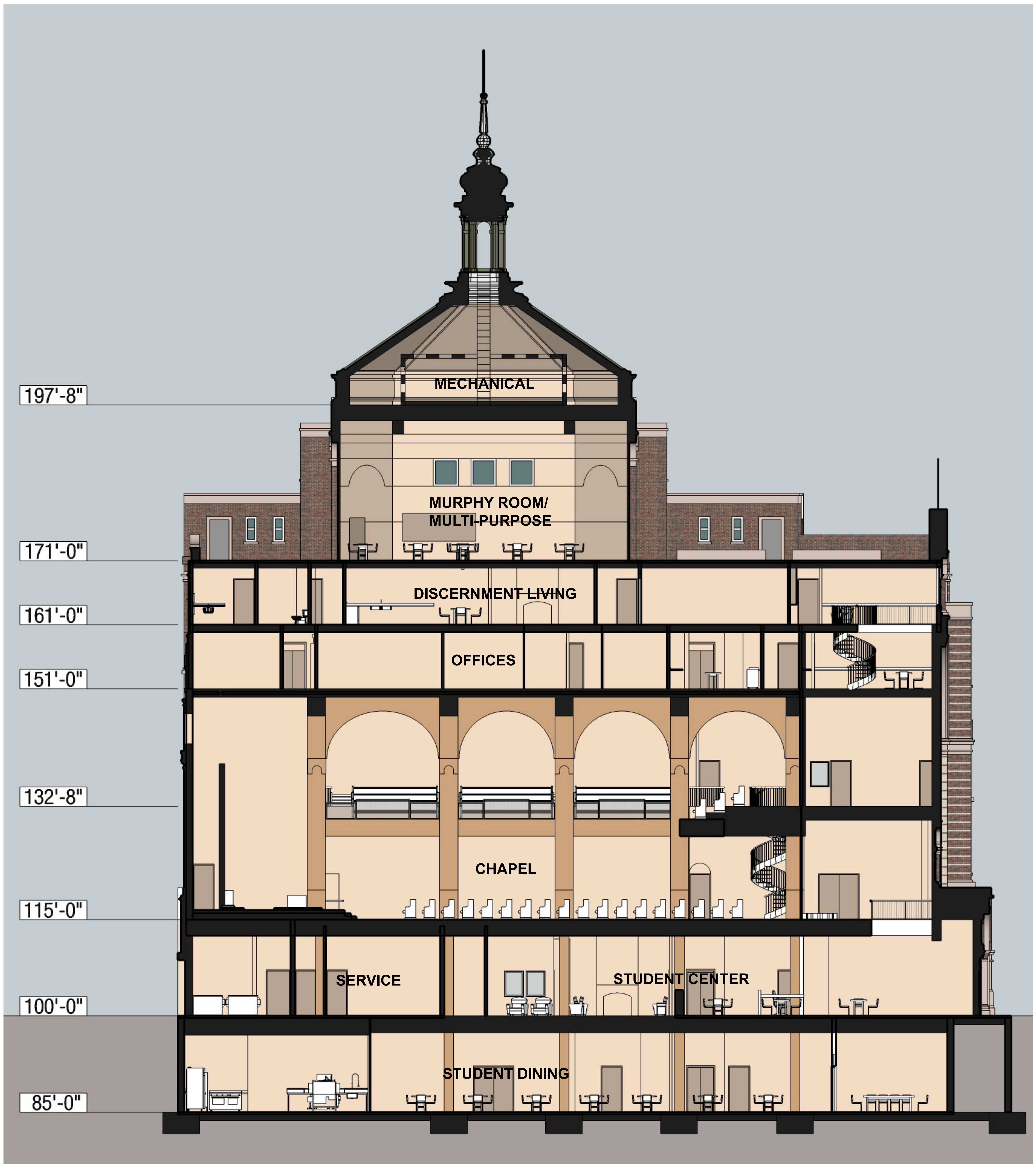








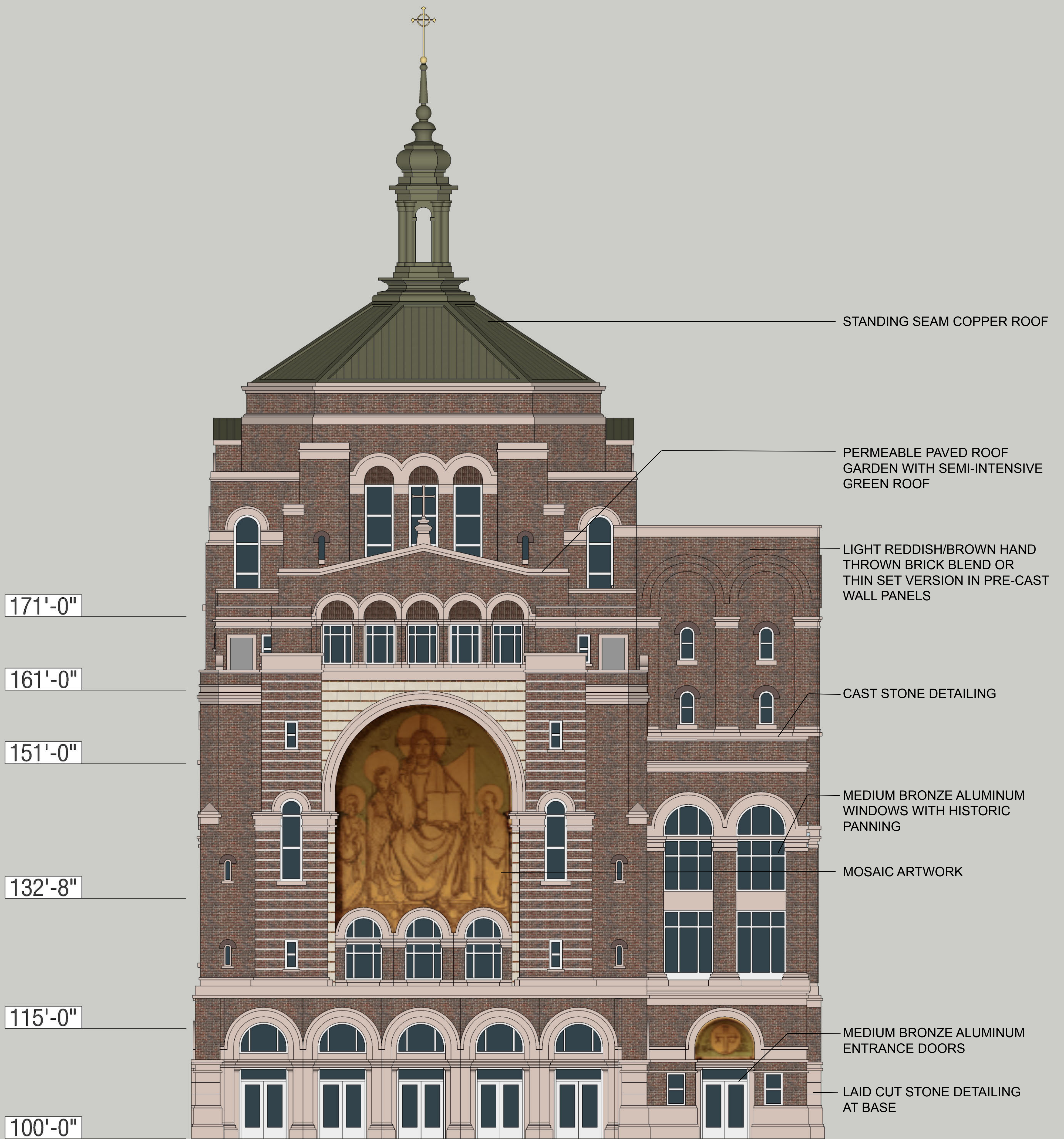


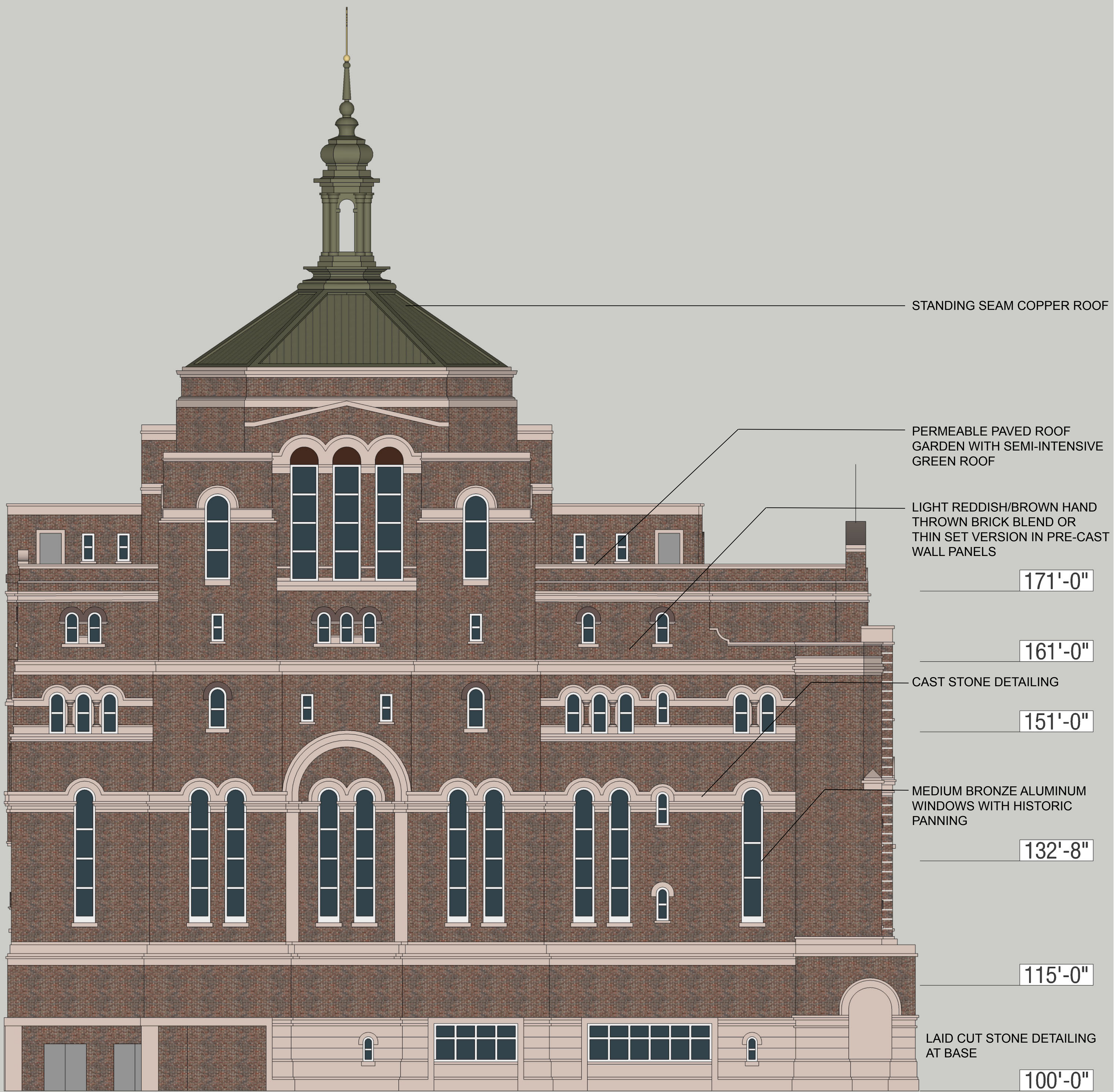


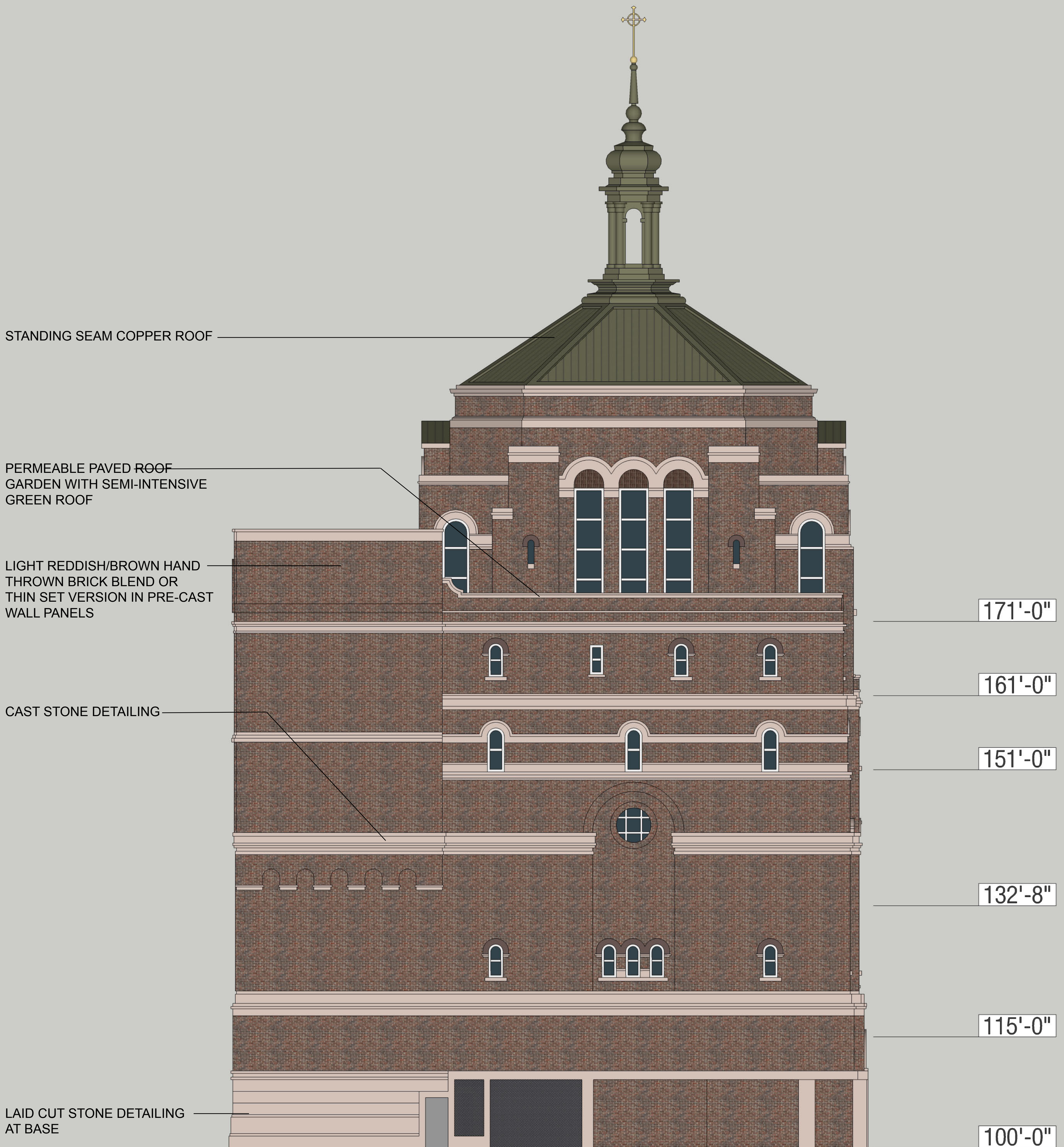
ST. PAUL University Catholic Center

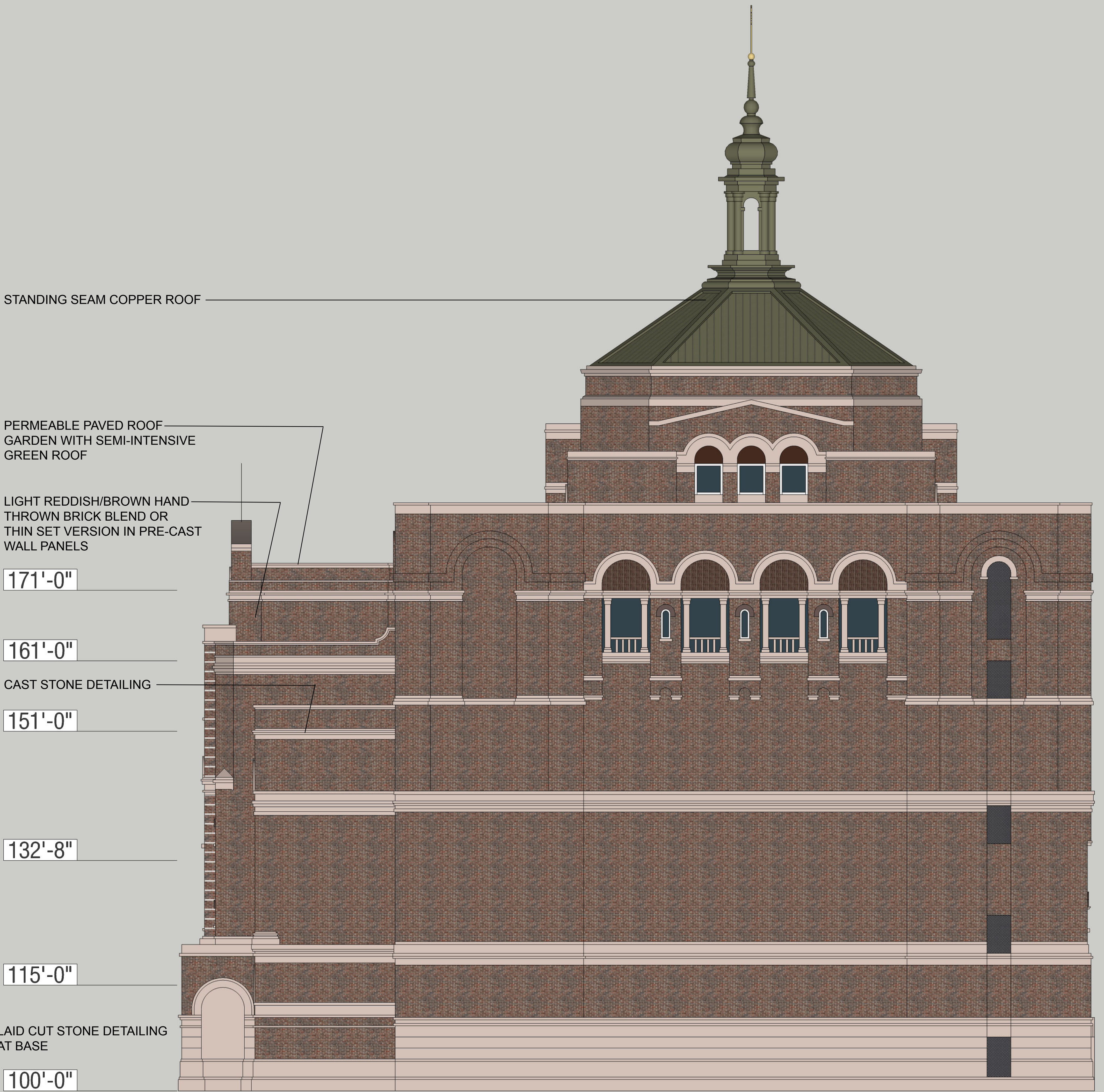
Building Section

November 14, 2011









STANDING SEAM COPPER ROOF

PERMEABLE PAVED ROOF
GARDEN WITH SEMI-INTENSIVE
GREEN ROOF

LIGHT REDDISH/BROWN HAND
THROWN BRICK BLEND OR
THIN SET VERSION IN PRE-CAST
WALL PANELS

171'-0"

161'-0"

CAST STONE DETAILING

151'-0"

132'-8"

115'-0"

LAID CUT STONE DETAILING
AT BASE

100'-0"

ST. PAUL University Catholic Center

West Elevation

November 14, 2011



ST. PAUL University Catholic Center

South Elevation of State Street Mall

November 14, 2011

