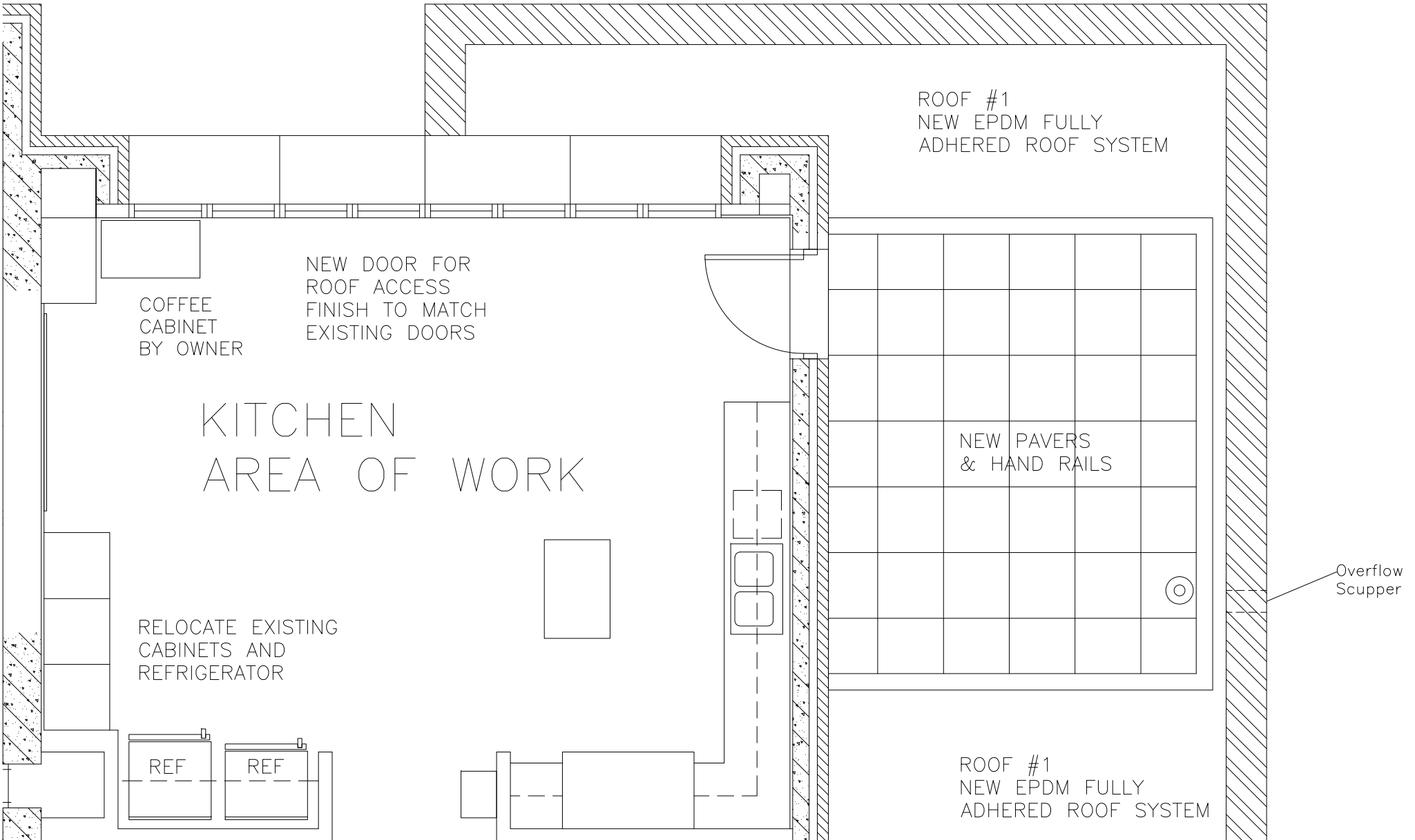
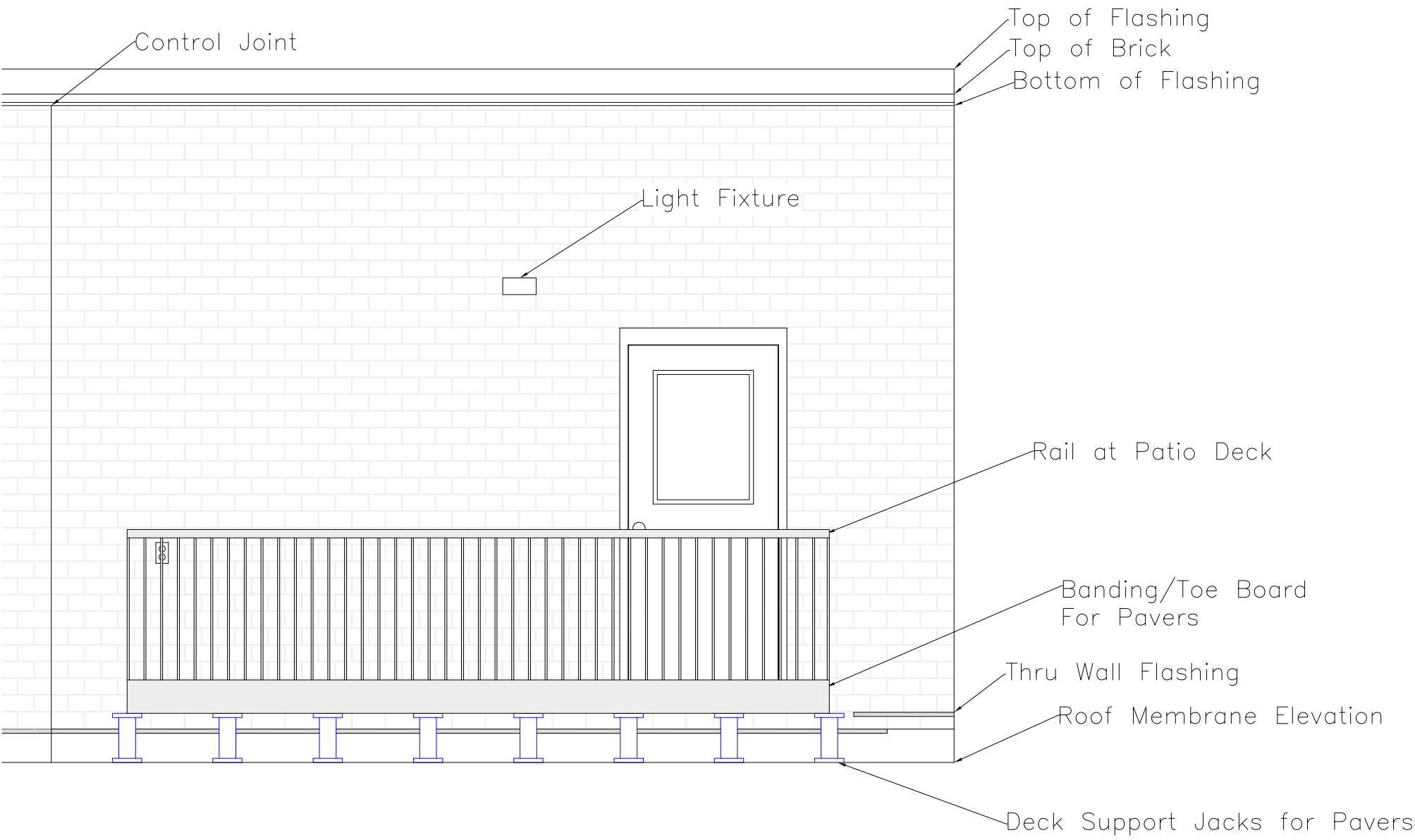


FIRE STATION #4 PATIO ADDITION

- CONSISTS OF:
- INSTALLATION OF DOOR FROM KITCHEN TO ROOF AREA
- INSTALLATION OF NEW FULLY ADHERED ROOFING SYSTEM FOR ROOF #1
- INSTALLATION OF 2"X24"X24" CONCRETE PAVERS ON ADJUSTABLE ROOFTOP DECK SUPPORTS
- INSTALLATION OF RAILING/BANDING SYSTEM FOR PAVERS
- RELOCATION OF CABINETS AND REFRIGERATORS IN KITCHEN AREA

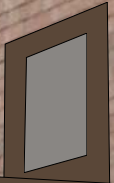




FIRE STATION #4
 EAST ELEVATION AT ROOF LINE #1



Light fixture



1437

MADISON
CELLULAR AMERICA CITY



Monroe Street

