



ADULT SCHOOL

# Crossing Guards

# What is the Crossing Guard program?

Adult School Crossing Guards have been used for several decades at crosswalks where large number of *elementary* students cross.

## Police Department

- ✓ Hire
- ✓ Train
- ✓ Schedule
- ✓ Evaluate CGs
- ✓ Provide counts (fall/spring)

## Traffic Engineering

- ✓ Collect data
- ✓ RESJI Fast Track Tool
- ✓ Communicate with School and Community
- ✓ Provide recommendations

DEPARTMENT OF



TRANSPORTATION

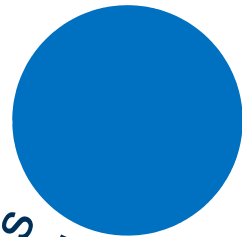
# History

1960's

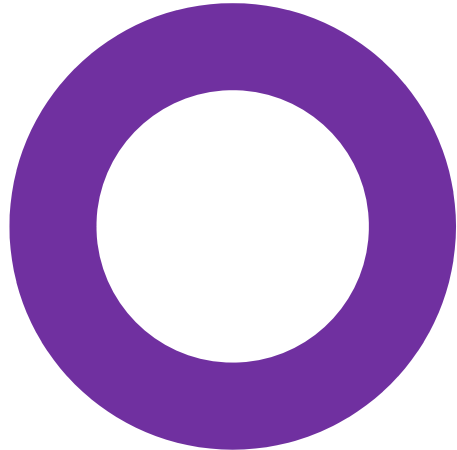
1975



Reviewed City's school crossing protection policies



Criteria developed and accepted by CC



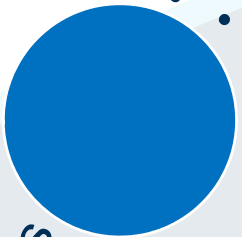
CC requested reevaluation



Lengthy review – minor changes made



Recommendations based on:



- Criteria detail
- Degree of hazard
- Provide comparison

DEPARTMENT OF



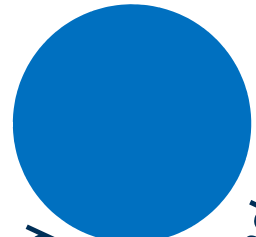
TRANSPORTATION

# History

2014



PBMVC requested review of criteria



Review and compare assign and discontinue criteria

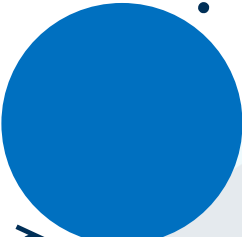


- Madison's criteria one of the best in the country

2016



Last amended criteria to:



- Notify neighborhood
- STSC for requests

DEPARTMENT OF



TRANSPORTATION

# Study – New Locations

## Request for new assignment

- By: Elementary School Principal
- To: School Traffic Safety Committee (STSC)

## TE Study – Collect data

- Elementary school students
- Available gaps
- Vehicle speed
- Crash history
- Physical conditions of location



DEPARTMENT OF



TRANSPORTATION

# Study – Existing Locations

## Revise semi-annual counts

- By: Crossing Guard Supervisors and Traffic Engineering

## TE Study – Collect data

- Elementary school students
- Available gaps
- Vehicle speed
- Crash history
- Physical conditions of location

DEPARTMENT OF



TRANSPORTATION

Study Date: April 24, 2018 AM

April 26, 2018 PM

**SCHOOL CROSSING ANALYSIS**  
**City of Madison**  
**Department of Transportation**  
**Traffic Engineering Division**

School Lapham Elementary

Crossing Location Ingersoll & Dayton

Elementary School Children Crossing Ingersoll, S Leg

					<b>POINTS</b>	
					a.m.	p.m.
<b>1) Number of elementary students crossing</b>	<b>number</b>	<b>points</b>	<b>number</b>	<b>points</b>	10	15
a.m. peak hour (7:00 to 8:00) <u>32</u>	1 - 5	1	25 - 29	6		
	6 - 9	2	30 - 34	10		
	10 - 14	3	35 - 39	15		
p.m. peak hour (2:30 to 3:30) <u>36</u>	15 - 19	4	40 - 49	20		
	20 - 24	5	50 - 74	30		
School Schedule 7:45am-2:42pm			75 - 99	35		
<b>2) Gap Availability</b>					28	28
crossing distance = <u>34</u> feet	<b>% safe</b>	<b>gap time</b>	<b>points</b>	<b>% safe</b>		
	80 +	0		45 - 49	20	
minimum safe crossing time = <u>12</u> seconds	70 - 79	4		40 - 44	24	
	60 - 69	8		30 - 39	28	
% safe crossing time = <u>33</u> % a.m.	55 - 59	12		20 - 29	32	
<u>32</u> % p.m.	50 - 54	16		0 - 20	36	

DEPARTMENT OF



TRANSPORTATION

**SCHOOL CROSSING ANALYSIS**  
**City of Madison**  
**Department of Transportation**  
**Traffic Engineering Division**

<b>3) Motor Vehicle Speed</b>  85th percentile speed = <u>30</u> mph a.m.  <u>30</u> mph p.m.	<u>mph</u> < = 20 21 - 25 26 - 30 31 - 35	<u>points</u> 0 1 2 4	<u>mph</u> 36 - 40 41 - 45 46 +	<u>points</u> 7 11 15	2	2
<b>4) Sight Distance</b>  available sight distance: _____ feet _____ bound  _____ feet _____ bound  ratio: available sight distance / design stopping distance  _____ feet _____ bound  _____ feet _____ bound	<u>design</u> <u>85th %ile speed</u> < = 25 mph 26 - 30 mph 31 - 35 mph 36 - 40 mph 41 - 45 mph 46 + mph	<u>stopping distance</u> <u>feet</u> 155 200 250 305 360 425	<u>ratio</u> 2.1 + 1.5 - 2.0 1.0 - 1.5 < 1.0	<u>points</u> 0 1 5 15	0	0
<b>5) Safety History - Previous Five Years</b>  a) Number of reported crashes at study location involving elementary school children going to or coming from school.  <u>0</u> reported crashes	<u>crashes</u> 0 1 each add'l	<u>points</u> 0 8 20			0	0





**SCHOOL CROSSING ANALYSIS**  
**City of Madison**  
**Department of Transportation**  
**Traffic Engineering Division**

<p>b) Reported crashed not involving children going to or coming from school, but of types and/or at times that could conflict with school crossing at this location.</p> <p>_____ reported crashes. Type: _____ <span style="float: right;"><u>points</u> 0 - 5</span></p> <p>_____ reported crashes. Type: _____ <span style="float: right;">0 - 5</span></p> <p>_____ reported crashes. Type: _____ <span style="float: right;">0 - 5</span></p>	0	0
<p><b>6) Other Factors</b></p> <p>Foreign traffic route. <span style="float: right;"><u>points</u> 0 to +5</span></p> <p>For each approach in excess of four. <span style="float: right;">+5</span></p> <p>For complex signal or crossing design. <span style="float: right;">+5 to +10</span></p> <p>For simple signal or crossing design. <span style="float: right;">-5 to -10</span></p> <p>Safer crossing one block out of the way. <span style="float: right;">-10</span></p> <p>Large percentage of grades K and 1 students (over 40%). <span style="float: right;">0 to +5</span></p> <p>An intersection of two arterial streets where total weekday traffic approach volume exceeds 25,000 vehicles. <span style="float: right;">+4</span></p> <p>Children crossing multiple crosswalks at an intersection. <span style="float: right;">0 to +10</span></p> <p>Stopped buses and/or other obstructions. <span style="float: right;">0 to +5</span></p> <p>Volume of turning traffic not reflected in gap availability. <span style="float: right;">0 to +5</span></p> <p>Observations of the percent and types of trucks during the times when students are using the crossing</p>	1 1	1
<b>TOTAL HAZARD RATING</b>	42	46

DEPARTMENT OF



TRANSPORTATION

# Hazard Rating



>20 points  $\geq$ 25 elementary students

- Mark as School Crossing

>30 points  $\geq$ 25 elementary students

- Install Flashing Beacons

>40 points  $\geq$ 25 elementary students

- Assign Adult Crossing Guard

<30 points <15 elementary students

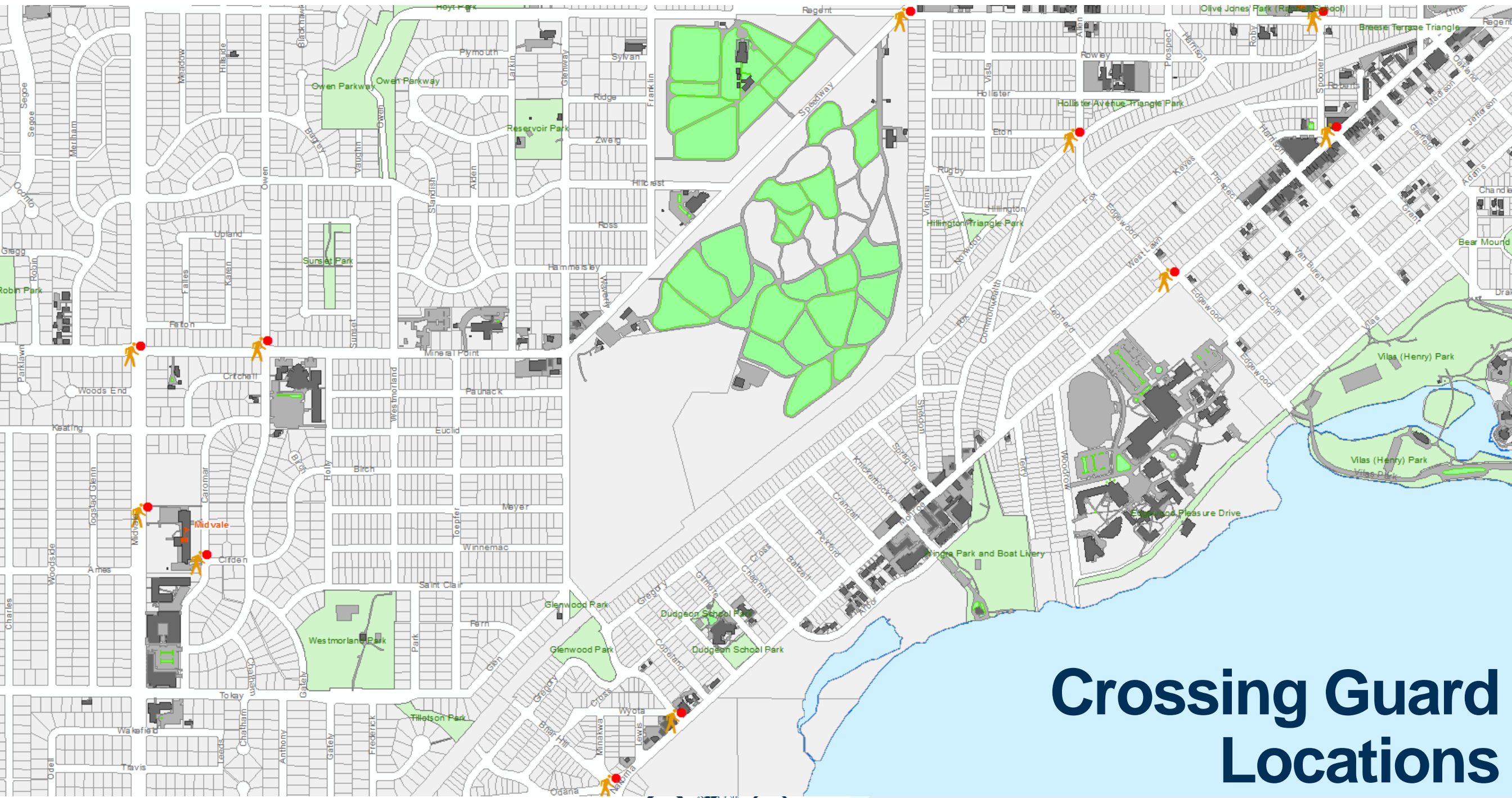
- Discontinue existing Crossing Guard location



DEPARTMENT OF



TRANSPORTATION



# Crossing Guard Locations

**MADISON PUBLIC SCHOOLS 2018-19 School Year  
STUDENT COUNT BY SCHOOL CROSSING**

<u>SCHOOL</u>	<u>CROSSING</u>
ALLIS	4201 BUCKEYE ROAD
CHAVEZ	MAPLE GROVE/KESWICK
CRESTWOOD	5900 OLD SAUK
CRESTWOOD	ROSA / OLD MIDDLETON
ELVEHJEM	BUCKEYE/DROSTER
EMERSON	SEVENTH / E. JOHNSON
EMERSON	NORTH / E. JOHNSON
FALK	HAMMERSLEY/THERESA
FALK	6300 BLK WOODINGTON WAY
FRANKLIN	LAKESIDE / ROWELL
GLENDALE	PFLAUM / MAHER
GOMPERS/BLACKHAWK	WYOMING / ESCH
GOMPERS/BLACKHAWK	DELAWARE/ ESCH
GOMPERS/ HAWTHORNE	COMANCHE / WHEELER
HUEGEL	N. FAIR OAKS / LEXINGTON
KENNEDY	2600 PRAIRIE
KENNEDY	MEADOWLARK / AGATE
LAKEVIEW	MILWAUKEE / MEADOWLARK
LAPHAM	N. SHERMAN / TENNYSON
LEOPOLD	INGERSOLL / DAYTON
LINCOLN	2600 POST ROAD
LINDBERG	BADGER ROAD/CYPRESS
LOWELL	KENNEDY/CLAREMONT
MARQUETTE/OKEEFE	ATWOOD/FAIR OAKS
MARQUETTE/OKEEFE	JENIFER / THORNTON (Jenifer)
MARQUETTE/OKEEFE	JENIFER / THORNTON (Thornton)
MARQUETTE/OKEEFE	ATWOOD / DIVISION
MENDOTA	WILLIAMSON / THORNTON
MIDVALE	4000 SCHOOL ROAD
MIDVALE	CAROMAR / CLIFDEN
MIDVALE/QUEEN OF PEACE	400 SO. MIDVALE
MIDVALE/VHE/HAMILTON	MINERAL PT / OWEN
MUIR/JEFFERSON	MINERAL PT / MIDVALE
ORCHARD RIDGE/TOKI	GAMMON ROAD/TREE LANE
ORCHARD RIDGE/TOKI/SMG	GILBERT / RAYMOND
ORCHARD RIDGE/TOKI	GILBERT / FLAD
RANDALL/B.S./EDGE	RUSSETT / WHITNEY
RANDALL/B.S./EDGE	COMMONWEALTH / ALLEN
RANDALL/B.S.	EDGEWOOD / MONROE
RANDALL/B.S.	GRANT/MONROE
RANDALL/B.S.	HIGHLAND/REGENT ST.
RANDALL/B.S.	SPOONER/REGENT
SANDBURG	PORTAGE / DONALD
SCHENK/WHITEHORSE	DENNETT / HARGROVE
SCHENK/WHITEHORSE	SCHENK/PAUS
STEPHENS	ROSA ROAD/STADIUM
THOREAU	3800 NAKOMA ROAD
THOREAU/WINGRA	SEMINOLE / NAKOMA
THOREAU/WINGRA	MONROE / GLENWAY
THOREAU/WINGRA	NAKOMA / MONROE / ODANA

# Current Locations

**52**  
crossings



madison.com/ws

DEPARTMENT OF



TRANSPORTATION

# Study Locations 2019-2020

***New*** - Orchard Ridge Elementary at Raymond Rd & Leland Dr

***Additional*** - Randall Elementary  
at Regent/Speedway

***Low numbers:***

- **Buckeye & Droster**
- **Atwood & Division**

**Will begin collecting data in October**



DEPARTMENT OF



TRANSPORTATION



# School Zone Safety

# School Traffic Safety Committee

## Representatives

- MMSD Principal
- MMSD Staff – Safety/Facilities
- Madison Police Dept – TEST Team
- Madison Parking Enforcement
- Madison Crossing Guard Supervisors
- Traffic Engineering Staff

### Leopold Elementary Traffic Safety Plan

We have created a safety plan so all students arrive at school and are picked up from school in a SAFE way.

The plan will reduce congestion in front of the school on Post Road, at both arrival and dismissal times and will keep our crosswalks and sidewalks visible for the safety of our children.

If you drive, walk or bike your child to or from school, please read the guide and determine a plan for getting your child to school safely and ensuring the safety of all Leopold students on their way to and from school.

### If You Bike To School . . .

Helmets are strongly encouraged when riding a bicycle to school. MMSD requires bicyclists to have a helmet on school grounds.

Board of Education Policy states that a student age 10 or older may ride a bicycle to school. (The principal may make exceptions upon written request by a parent.) The school guidelines ask that an adult accompany young bicyclists (under age 10) to school.

It is important that you walk your bike when you get to the front of the school. Please remain on the sidewalk. Riding bicycles on the playground is not permitted.



It is important to lock your bike in the bike rack during the school day.

### If You Walk To School . . .

Always use the crosswalks and crossing guards to cross streets – don't cross mid-block. An adult crossing guard is located on Post Road in front of the central school entrance. Student safety patrols are located at the school driveways to help students walking along the sidewalks.



### If You Drive To School . . .

We recommend that you park and/or drop off your children in the following areas (also see map on other side):

**Post Road:** Drop your child off in the No Parking areas, which allows for stopping, but you cannot leave your car unattended. If you choose to drop off across street (heading east towards Fish Hatchery) **please have your child cross with the crossing guard in front of the school.**

### Leopold Way or Traceway:

Park and walk with your child to school, except in designated No Parking areas.



**The teacher's parking lot** (west side of school) is for **staff only**. This is not a drop off, pick up or turn around area unless you have requested and received special permission from the office.

**Bus loop** (at east end of school) is for buses and staff only unless you have a state issued hang tag for people with disabilities.

**U-turns are illegal anywhere on Post Rd.**

### Observe All Street Signs and Traffic, Parking and Pedestrian Laws

The Madison Police Dept. will ticket any parent/caregiver who breaks these laws while dropping off/picking up their child.

- "No Parking" areas do allow for drop off or pick up, **BUT you cannot leave your car unattended!**
- "No Stopping, Standing or Parking" means just that – **student drop off/pick up is NOT allowed.**
- It is illegal to park within
  - 4 feet of a driveway
  - 20 feet of a crosswalk
  - 30 feet of a stop sign
- Motorists must yield the right of way to pedestrians crossing a street at any marked or unmarked crosswalk where there is no traffic signal.
- **Pedestrians do not have the right of way when crossing mid-block. Please use designated crosswalks.**
- It is illegal to double park to drop off/pick up your child, even if you remain in the car. This disrupts traffic and is not safe.
- **U-turns are illegal anywhere on Post Rd.**
- **It is illegal to stop in an intersection.** Do not block Leopold Way or Traceway if traffic backs up. Allow drivers on the side streets to get out.

DEPARTMENT OF



TRANSPORTATION

# Safe Routes to School

- Walking School Buses
- Bike Trains
- Parent Education
- Walk and Bike Audits



DEPARTMENT OF



TRANSPORTATION



# Engineering – Infrastructure Improvements

## Safe Routes – Ped Bike Improvements Budget

### 2019 Projects

- RRFB at Old Sauk & Crestwood Elementary
- Auto detection for RRFB at W Washington & Brittingham Park (Triangle Neighborhood)
- Continental Crosswalk at Crystal & Diamond (McGinnis Park)
- Bike box at Olin & Gilson (Off Set Intersection near Franklin Elementary; Goodman Pool)

### 2018 Projects

#### RRFB Additions

- Midvale Blvd at Midvale Elementary
- Post Rd at Leopold Elementary
- Regent St at Vista Rd/West High
- Old Middleton Rd at Rosa Rd at Crossing Guard location

DEPARTMENT OF



TRANSPORTATION

# Pedestrian Safety

- Pedestrian Flag Program in collaboration with Safe Communities
- Collaboration on Pedestrian Safety Campaign
- Madison Police Department TEST Team



**THE SAFETY OF CHILDREN**  
It is important that we drive responsibly, whether in a school zone or not. Although children may be concentrated near a school, every street in every neighborhood at some time has children and other pedestrians using the street and sidewalks. Appropriate driving includes driving and being prepared to stop for pedestrians, stopping as directed by crossing guards, and yielding to pedestrians on crosswalks. Whenever possible, children are encouraged to take the bus or walk to school to reduce congestion and traffic hazards near school grounds.

**PARKING NEAR SCHOOLS**  
The City of Madison Traffic Engineering Division frequently receives requests from parents, neighbors, and school officials concerned about children's safety near schools. Traffic signs around school property are placed to direct motorists, pedestrians, and bicycles, and provide separate spaces for motorists and buses to drop children off at the school. Police Parking Enforcement Officers do enforce these regulations.

**SPEED KILLS**  
A pedestrian hit by a motor vehicle traveling at 20 mph has only a 10% chance of being killed. At 30 mph there is a 47% chance the pedestrian will die. At 40 mph this jumps to 87%. Please slow down whenever pedestrians are present, especially around schools and parks.

**ADULT SCHOOL CROSSING GUARDS**  
Where there is an adult crossing guard at a crosswalk, you have to obey the crossing guard's directions.  
While driving or bicycling on the street,  
• Stop when directed to by the crossing guard.  
• Stop no closer than 10 feet from the crossing guard.  
• Do not block a crosswalk or intersection.  
• Stay stopped until the pedestrian and the crossing guard have reached the curb, and stay stopped until the crossing guard has dropped their sign. This is your direction to proceed.  
When walking or bicycling to school, always cross with the adult school crossing guard when one is present. Student walkers and bicyclists, and their parents, should remain on the sidewalk until the crossing guard has stopped all traffic and given you a verbal okay to cross. Bicyclists crossing with the adult crossing guard should dismount and walk across the street.  
Although children may be concentrated near and around schools, children and other pedestrians can be found on every neighborhood street. Watch for children and other pedestrians everywhere. Slow down whenever pedestrians are present to ensure their safety. Yield to pedestrians at all crosswalks, whether the crosswalk is marked or not.

For more information about School Zone Safety or other traffic issues contact:  
City of Madison  
Traffic Engineering Division  
215 Martin Luther King, Jr. Blvd., Suite 100  
PO Box 2960  
Madison, WI 53701-2960  
608-266-4761 (voice)  
608-267-1158 (fax)  
[www.cityofmadison.com/trafficengineering](http://www.cityofmadison.com/trafficengineering)

City of Madison  
Police Department  
211 S. Carroll Street  
Madison, WI 53703  
Non-Emergency Dispatch: (608) 255-2345  
<http://www.cityofmadison.com/police/>

Publication produced by the City of Madison  
Traffic Engineering Division  
Police Department  
March 2013

**SCHOOL ZONE SAFETY**

Traffic Information Series

**CONDUCCION CERCA DE LAS ESCUELAS**  
Señales de advertencia

**LAS SEÑALES DE AVISO DE ZONA ESCOLAR**  
Señales de advertencia de las escuelas y pueden colocarse antes o después de las cruces peatonales que usan los niños para ir a la escuela y volver a su casa. Estas señales recuerdan a los conductores que se acercan a una escuela. Debe prestarle atención a los niños, disminuir la velocidad y prepararse para detenerse si hay niños presentes, y cederles el paso cuando crucen en las cruces peatonales.

**LAS SEÑALES DE CRUCE ESCOLAR**  
Señales de advertencia de las cruces peatonales que usan los niños para ir a la escuela y volver a su hogar. Estas cruces peatonales pueden encontrarse en una intersección o en una calle.

Siempre cédale el paso a los peatones en las cruces peatonales. Recuerde que los niños en las cruces peatonales están vulnerables. Un cruce peatonal es completamente el terreno de la acción sobre la intersección de una calle, independientemente de si está marcado o no.  
Además, un cruce peatonal puede existir a mitad de cuadra si el cruce está marcado y señalizado. Como muchas escuelas están ubicadas a mitad de cuadra, y no en esquinas, generalmente hay un cruce peatonal a mitad de cuadra frente a la escuela.

**CONDUCCION CERCA DE LAS ESCUELAS**  
Límite de velocidad

**LÍMITE DE VELOCIDAD EN LAS ESCUELAS DE LAS ESCUELAS**  
El límite de velocidad en una calle adyacente a una escuela, y en cualquier cruce escolar, debe reducirse por estacionamiento de vehículos que indique los conductores. Conducir demasiado rápido puede causar lesiones o la muerte a los niños que están en la calle cerca de un cruce peatonal señalizado como un cruce escolar.  
Este límite de velocidad también está en vigencia cada vez que un guardia de cruce escolar está en un cruce peatonal marcado con una señal de cruce escolar o está estacionado o estacionado en la calle cerca de un cruce peatonal señalizado como un cruce escolar.  
Además, que todas escuelas de Madison tienen señales de Límite de velocidad en cruces de una escuela 20 en los calles más transitadas, solo tienen señales de cruce de una escuela en las calles residenciales adyacentes. La señal de Aviso de zona escolar ubicada en áreas donde el límite de velocidad en el área escolar está en vigencia siempre que haya niños presentes, independientemente de si hay adultos una señal de zona de velocidad en los cruces de una escuela. Por lo tanto, el límite de velocidad será de 15 millas por hora en la calle con solo la señal de Aviso de zona escolar.

**SCHOOL SPEED LIMIT 20 WHEN CHILDREN ARE PRESENT**

**MULTAS MÁS ALTAS**  
Las multas de tráfico por exceso de velocidad en una zona escolar o en un cruce peatonal son más altas que en cualquier otra zona.

**FINES HIGHER**

**CONDUCCION CERCA DE LAS ESCUELAS**  
Detenerse, permanecer y estacionar

**PROHIBIDO DETENERSE**  
PRESENTERE O ESTACIONAR Y OBLIGAR A UN PASAJERO A DETENERSE O ESTACIONAR EN UN CRUCE PEATONAL O EN UN CRUCE PEATONAL MARCADO CON UNA SEÑAL DE CRUCE ESCOLAR.

**PROHIBIDO ESTACIONAR EN DIAS DE CLASE**  
Señales de advertencia de las escuelas indican que los límites de velocidad pueden disminuir y disminuir por momentos, pero no pueden disminuir y dejar de estacionarse. Estas señales se usan en zonas donde los peatones pueden estar o estar a la espera de los niños.  
En estas zonas, puede dejar a un hijo o esperar para recogerlo, sin embargo, no puede estacionarse en una zona de cruce peatonal o en una zona de cruce escolar.

**ESTACIONAMIENTO DE 10 MINUTOS**  
En las zonas de Estacionamiento de 10 minutos o zonas donde los conductores pueden estacionarse por un breve período de tiempo y luego salir el espacio. Puede recibir una multa por hacer un giro en U o en los lugares que también necesitan hacer lo mismo. Por ejemplo, cuando se deja a un alumno o se encuentra acompañando a un niño en la escuela.

**NO STOPPING STANDING OR PARKING ON SCHOOL DAYS**

**NO PARKING ON SCHOOL DAYS**

**DISK UP ONLY**

**10 MINUTE PARKING**  
7:30 am - 4:30 pm ON SCHOOL DAYS

**CONDUCCION CERCA DE LAS ESCUELAS**  
Estacionar

Las leyes estatales prohíben detenerse, permanecer o estacionar en los espacios antes de cada momento, independientemente de si hay señales que indiquen estas restricciones.  
Detenerse, permanecer o estacionar está prohibido:  
• En el medio de una intersección.  
• En un cruce peatonal.  
• En la acera.  
• En el lado de la calzada de otro automóvil estacionado (independientemente de si el tráfico oficial prohibido, limita o restringe estacionamiento o estacionamiento).  
Se prohíbe estacionar:  
• En una zona de carga.  
• Dentro de los 10 pies de un edificio o de una calle peatonal, o entrada para automóviles.  
• Dentro de los 15 pies de un cruce peatonal.  
• En cualquier otro lugar que los señales de tráfico oficial prohibido, limita o restringe estacionamiento o estacionamiento.  
Las leyes en 11 cruces peatonales confusas en el tráfico que pueden confundir a los niños y ocasionar lesiones adicionales en las zonas escolares. Cuando deja a los niños en la escuela o los recoge cuando están sentados, siga esperando en la dirección en la que se dirige. De lo contrario, si una señal para hacer un giro en U o en los lugares que también necesitan hacer lo mismo. Por ejemplo, cuando se deja a un alumno o se encuentra acompañando a un niño en la escuela.

---

# Questions?

Gretchen Avilés Piñeiro  
[gavilespineiro@cityofmadison.com](mailto:gavilespineiro@cityofmadison.com)  
(608)266-4899

Renee Callaway  
[recallaway@cityofmadison.com](mailto:recallaway@cityofmadison.com)  
(608)266-6225