

SANITARY SEWER PLANT VALUE
(Schedule 'A' / Sanitary Structures)

LINDEN PARK - PHASE 6

53B2204

STRUCTURES

Description	Quantity	Unit	Unit Cost	Total Cost
4' DIAM SAS	5	ea	\$ 2,731.20	\$ 13,656.00
Engineering @ 10%				\$ 1,365.60
Total Cost			\$ 3,004.32	\$ 15,021.60
Engineering @ 10%				
Total Cost				
Engineering @ 10%				
Total Cost				
Engineering @ 10%				
Total Cost				
Engineering @ 10%				
Total Cost				
Engineering @ 10%				
Total Cost				
Engineering @ 10%				
Total Cost				
Engineering @ 10%				
Total Cost				
Engineering @ 10%				
Total Cost				
Engineering @ 10%				
Total Cost				
Engineering @ 10%				
Total Cost				
Engineering @ 10%				
Total Cost				
Engineering @ 10%				
Total Cost				
Engineering @ 10%				
Total Cost				
GRAND TOTAL COST				\$ 15,021.60

Total Sanitary Sewer Improvements: \$ 35,813.14

Prepared By: JD
Date: 2/16/2009

SANITARY SEWER PLANT VALUE

(Schedule 'A' / Sanitary Pipes)

LINDEN PARK - PHASE 6

53B2204

PIPES

Description	Quantity	Unit	Unit Cost	Total Cost
8" PVC	644	LF	\$29.35	\$ 18,901.40
Engineering @ 10%				\$ 1,890.14
Total Cost			\$ 32.29	\$ 20,791.54

Engineering @ 10%				
Total Cost				

Engineering @ 10%				
Total Cost				

Engineering @ 10%				
Total Cost				

Engineering @ 10%				
Total Cost				

Engineering @ 10%				
Total Cost				

Engineering @ 10%				
Total Cost				

Engineering @ 10%				
Total Cost				

Engineering @ 10%				
Total Cost				

Engineering @ 10%				
Total Cost				

Engineering @ 10%				
Total Cost				

Engineering @ 10%				
Total Cost				

Engineering @ 10%				
Total Cost				

Engineering @ 10%				
Total Cost				

Engineering @ 10%				
Total Cost				

GRAND TOTAL COST				\$ 20,791.54

Prepared By: JD
 Date: 2/16/2009

STORM SEWER PLANT VALUE
(Schedule 'A' / Storm Structures)

LINDEN PARK - PHASE 6

53B2204

STRUCTURES

Description	Quantity	Unit	Unit Cost	Total Cost
H inlet	4	ea	\$ 1,120.00	\$ 4,480.00
Engineering @ 10%				\$ 448.00
Total Cost			\$ 1,232.00	\$ 4,928.00
3'X3' SAS	1	ea	\$ 1,800.00	\$ 1,800.00
Engineering @ 10%				\$ 180.00
Total Cost			\$ 1,980.00	\$ 1,980.00
18" RCP AE	1	ea	\$ 750.00	\$ 750.00
Engineering @ 10%				\$ 75.00
Total Cost			\$ 825.00	\$ 825.00
18" RCP AE - GATE	1	ea	\$ 240.00	\$ 240.00
Engineering @ 10%				\$ 24.00
Total Cost			\$ 264.00	\$ 264.00
Engineering @ 10%				
Total Cost				
Engineering @ 10%				
Total Cost				
Engineering @ 10%				
Total Cost				
Engineering @ 10%				
Total Cost				
Engineering @ 10%				
Total Cost				
Engineering @ 10%				
Total Cost				
Engineering @ 10%				
Total Cost				
Engineering @ 10%				
Total Cost				
Engineering @ 10%				
Total Cost				
Engineering @ 10%				
Total Cost				
GRAND TOTAL COST				\$ 7,997.00

Total Storm Sewer Improvements

\$ 21,488.50

Prepared By: JD
Date: 2/16/2009

STORM SEWER PLANT VALUE

(Schedule 'A' / Storm Pipes)

LINDEN PARK - PHASE 6

53B2204

PIPES

Description	Quantity	Unit	Unit Cost	Total Cost
12" RCP	79	LF	\$ 35.00	\$ 2,765.00
Engineering @ 10%				\$ 276.50
Total Cost			\$ 38.50	\$ 3,041.50
15" RCP	200	LF	\$ 37.00	\$ 7,400.00
Engineering @ 10%				\$ 740.00
Total Cost			\$ 40.70	\$ 8,140.00
18" RCP	50	LF	\$ 42.00	\$ 2,100.00
Engineering @ 10%				\$ 210.00
Total Cost			\$ 46.20	\$ 2,310.00
Engineering @ 10%				
Total Cost				
Engineering @ 10%				
Total Cost				
Engineering @ 10%				
Total Cost				
Engineering @ 10%				
Total Cost				
Engineering @ 10%				
Total Cost				
Engineering @ 10%				
Total Cost				
Engineering @ 10%				
Total Cost				
Engineering @ 10%				
Total Cost				
Engineering @ 10%				
Total Cost				
Engineering @ 10%				
Total Cost				
Engineering @ 10%				
Total Cost				
Engineering @ 10%				
Total Cost				
GRAND TOTAL COST				\$ 13,491.50

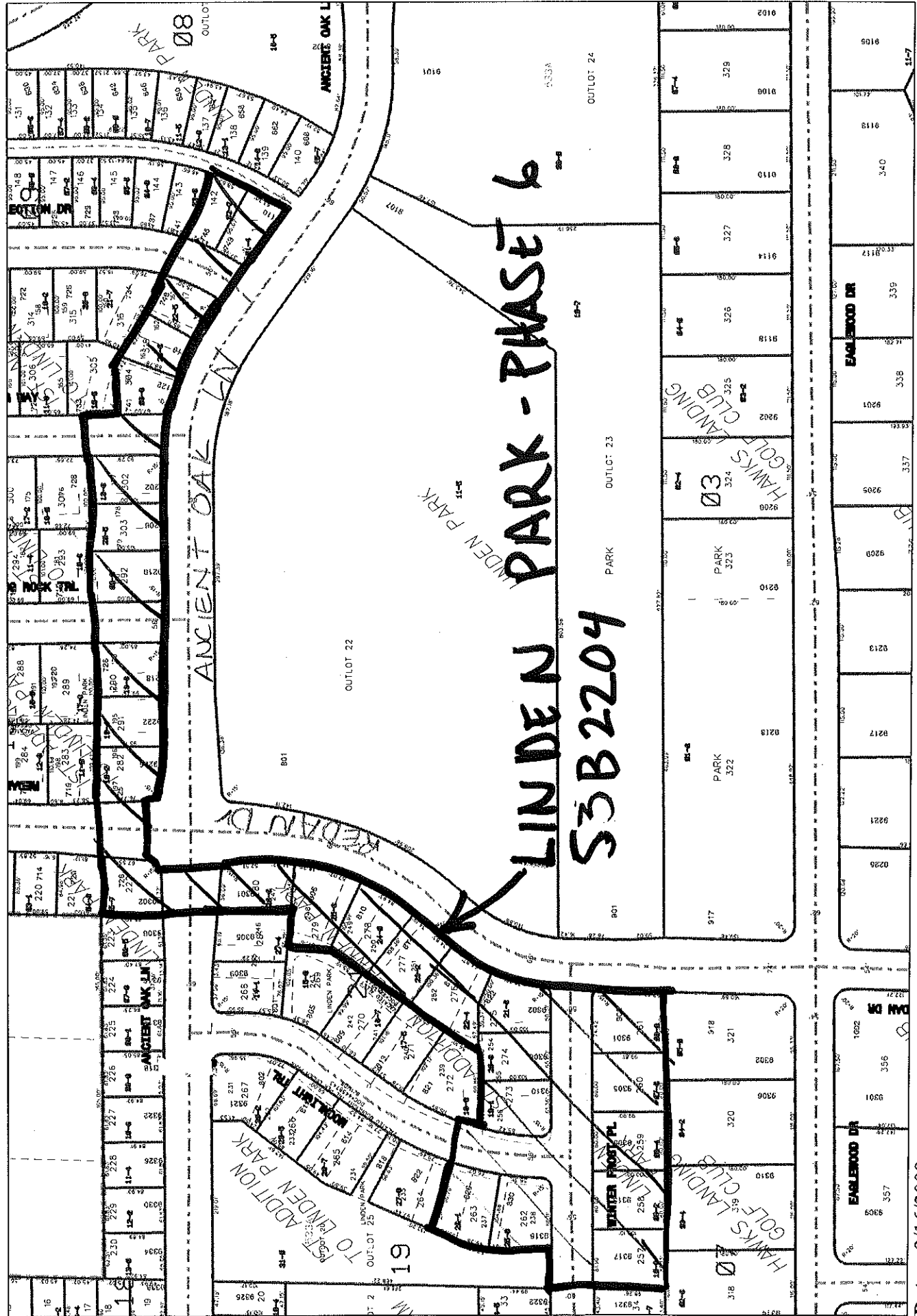
Prepared By: JD
 Date: 2/16/2009

**STREET PLANT VALUE
SIDEWALKS**

LINDEN PARK - PHASE 6
53B2204

SIDEWALK

Description	Limits	Limits	Quantity	Unit	Unit Cost	Total Cost
WINTER FROST PLACE	W PLAT LINE	MOONLIGHT TRL	348	LF	\$ 20.06	\$ 6,980.88
MS LINK NO 22670						
WINTER FROST PLACE	MOONLIGHT TRL	REDAN DR	514	LF	\$ 20.06	\$ 10,310.84
MS LINK NO 22668						
MOONLIGHT TRL	WINTER FROST PL	N LINE OF LOT 263	256	LF	\$ 20.06	\$ 5,135.36
MS LINK NO 24450						
SHINING ROCK TRL	ANCIENT OAK LN	N LINE OF LOT 292	210	LF	\$ 20.06	\$ 4,212.60
MS LINK NO 22658						
RUNG WAY	ANCIENT OAK LN	N LINE OF LOT 302	220	LF	\$ 20.06	\$ 4,413.20
MS LINK NO 22655						
REFLECTION DRIVE	ANCIENT OAK LN	N LINE OF LOT 317	198	LF	\$ 20.06	\$ 3,971.88
MS LINK NO 22652						
GRAND TOTAL COST					\$	\$ 35,024.75



Date: 2/16/2009

Time: 11:26:27 AM

Scale: 1 in = 180 Ft

Disclaimer: The City makes no representation about the accuracy of these records and shall not be liable for any damages resulting from their use.

Field View