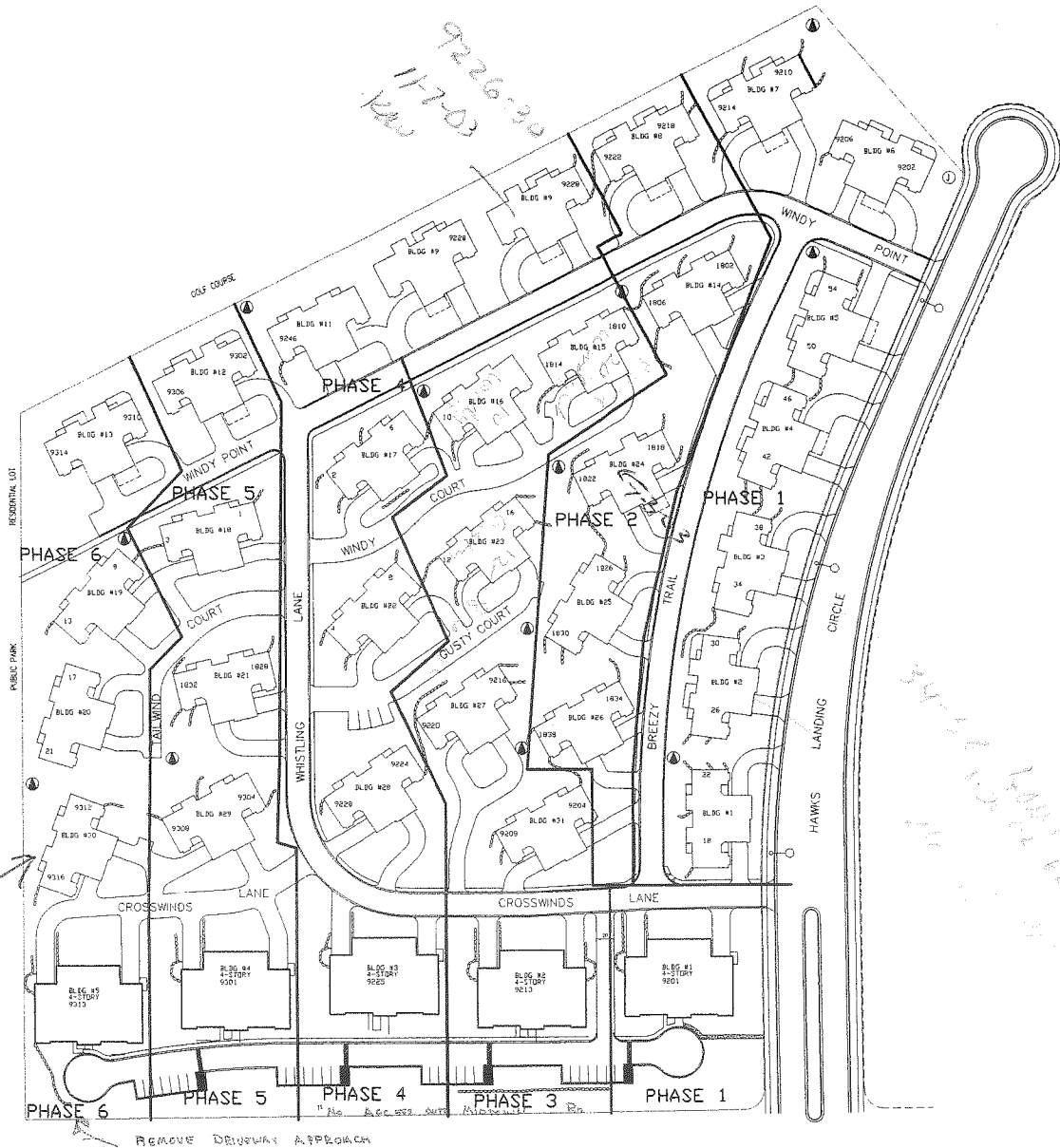


CROSSWINDS CONDOMINIUMS

AT HAWK'S LANDING

MIDTOWN ROAD AT HAWK'S LANDING CIRCLE, MADISON, WISCONSIN



GORMAN
 & COMPANY, INC.
 REAL ESTATE DEVELOPMENT AND MANAGEMENT
 1244 S. PARK ST. MADISON, WI 53715
 (608)257-8778 direct (608)257-4410 Ext. 310 fax (608)257-9002

"CROSSWINDS"
 AT HAWKS LANDING
 CONDOMINIUMS - DUPLEX
 CITY OF MADISON, WISCONSIN

Drawn: DMD

Checked: JSS

CITY
 STAFF
 SIGN-OFF
 PAGE

Date: 2-25-09

Revisions:

1	SIDING &
	ROOF HEIGHT

Project No.
 9911063A

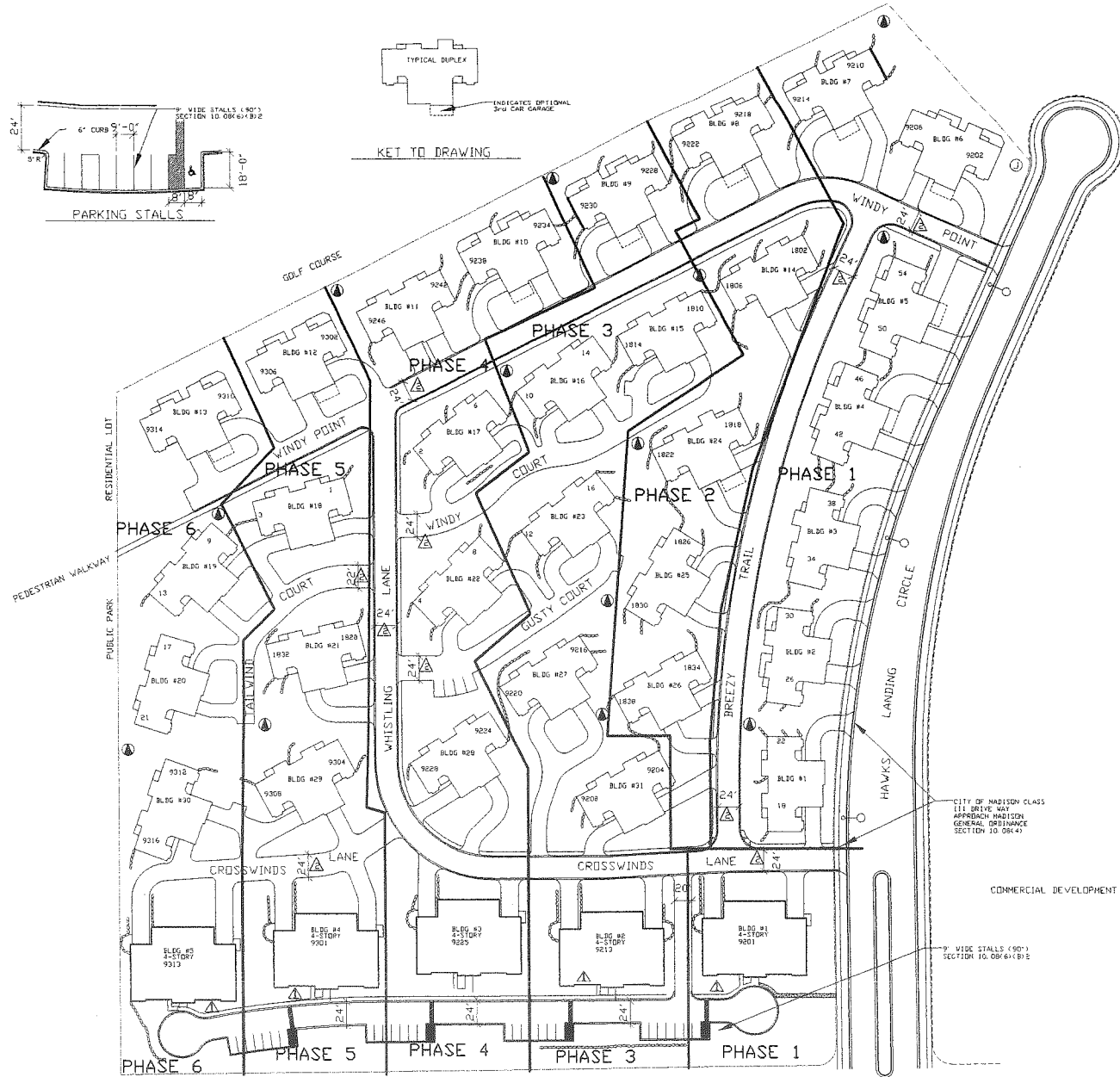
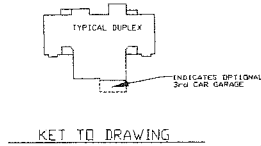
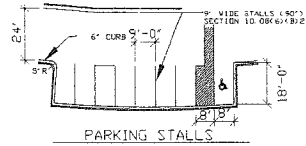
Sheet No.

T1

Of 31 Sheets

Plan/Parking Facility Approval					
Q CU		<input checked="" type="checkbox"/> PUD(SIP)		<input type="checkbox"/> PCD(SIP)	
Address	10002 MIDTOWN ROAD				
Contact Person	STEVEN R SHARPE		Phone	608-257-4100 x2291	
Design	12/15/08	Date	Lighting		
Plan	12/15/08	Date	SEES		
Public Engineering	12/15/08	Date	12/15/08		
City Engineering	12/15/08	Date	12/15/08		
LDAP Fee	12/15/08	Date	12/15/08		
Water	12/15/08	Date	12/15/08		
File	12/15/08	Date	12/15/08		
Total Impervious Area = 322,781 SF					

12/5/11



- PHASE 1 2000 -2001 CONSTRUCTION SEASON
 DUPLEX BUILDINGS: 1,2,3,4,5,6,&7
 BEGIN WITH BLDG. 1 & 6
 16-UNIT BUILDING: 1
- PHASE 2
 DUPLEX BUILDINGS: 8,14,24,25,&26
 (NO 16-UNIT BUILDING CONSTRUCTED IN PHASE 2)
- PHASE 3
 DUPLEX BUILDINGS: 9,15,16,23,27,31
 16-UNIT BUILDING: 2
- PHASE 4
 DUPLEX BUILDINGS: 10,11,17,22,&28
 16-UNIT BUILDING: 3
- PHASE 5
 DUPLEX BUILDINGS: 12,18,21,&29
 16-UNIT BUILDING: 4
- PHASE 6
 DUPLEX BUILDINGS: 13,19,20,&30
 16-UNIT BUILDING: 5

PLAN IS SHOWN FOR
 PHASE CONSTRUCTION
 ONLY DO NOT USE FOR
 CONSTRUCTION DATA

— LINE OF PHASED
 DEMARKTATION NOT
 PROPERTY LINES

ELECTRICAL UTILITIES KEY

- ELECTRICAL TRANSFORMER
- JUNCTION BOX
- EXISTING STREET LIGHT



MID TOWN ROAD

PHASE DEVELOPMENT PLAN

SCALE: 1" = 60'-0"

GORMAN & COMPANY, INC.
 REAL ESTATE DEVELOPMENT AND MANAGEMENT
 1244 S. PARK ST. MADISON, WI 53715
 (608) 257-8778 direct (608) 257-4410 Ext. 310 Fax (608) 257-9002

"CROSSWINDS"
 AT HAWKS LANDING
 CONDOMINIUMS
 CITY OF MADISON, WISCONSIN

Drawn: KKA

Checked:

Date: 11-8-00

Revisions:	
1	SIDEWALKS
2	CROSSWALKS STRIPES
3	ACCESSIBLE ROUTE
4	STREET WIDTHS
5	ADDRESSES

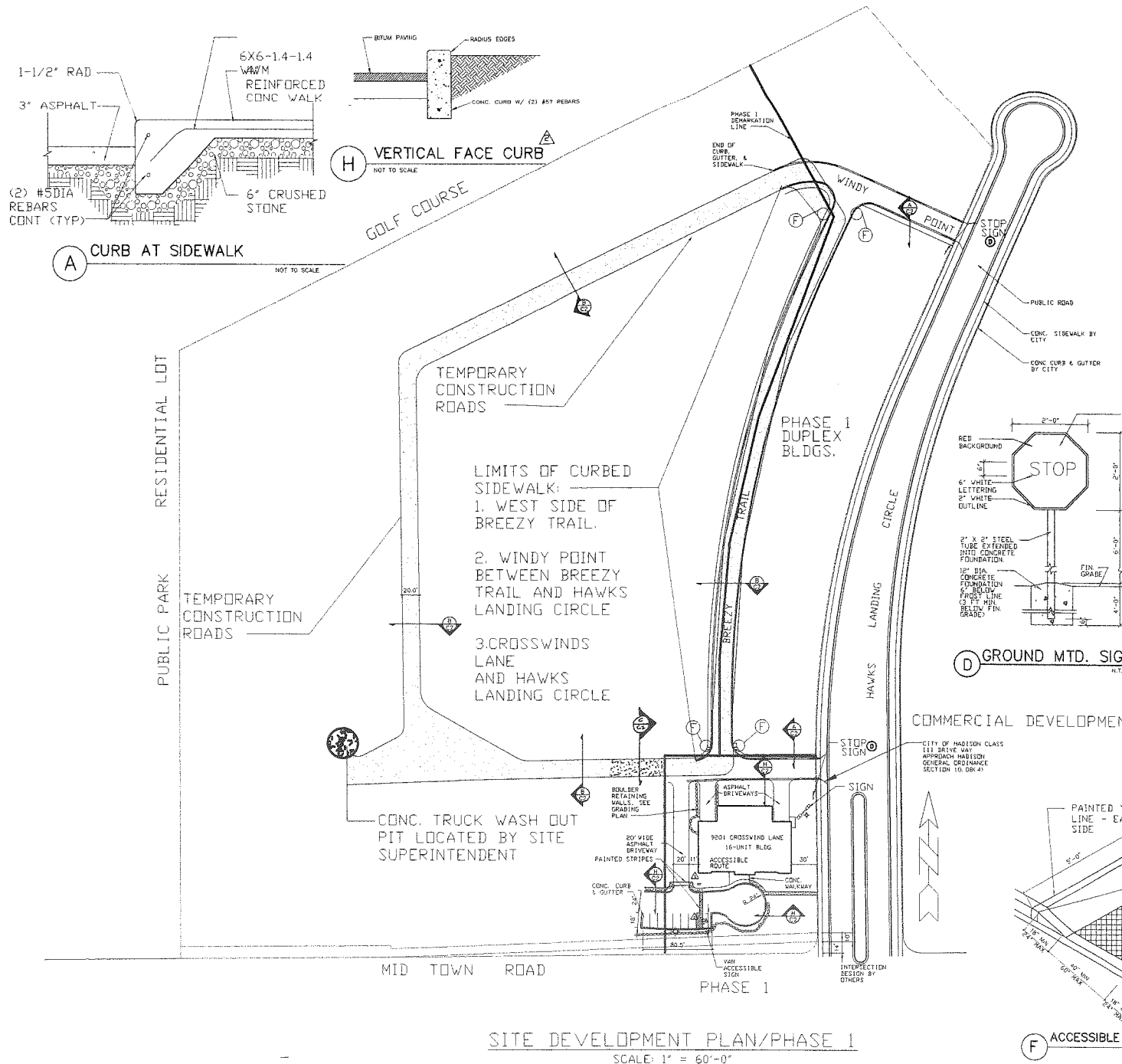
Project No.

9911063

Sheet No.

C1

Of 42 Sheets



PHASE 1 2000 -2001 CONSTRUCTION SEASON
 DUPLEX BUILDINGS: 1,2,3,4,5,6,&7
 BEGIN WITH BLDG. 1 & 6
 16-UNIT BUILDING: 1

GERMAN COMPANY INC.
 REAL ESTATE DEVELOPMENT AND MANAGEMENT
 1244 S. PARK ST. MADISON, WI 53715
 (608)257-9778 direct (608)257-4410 Ext. 310 Fax (608)257-9002

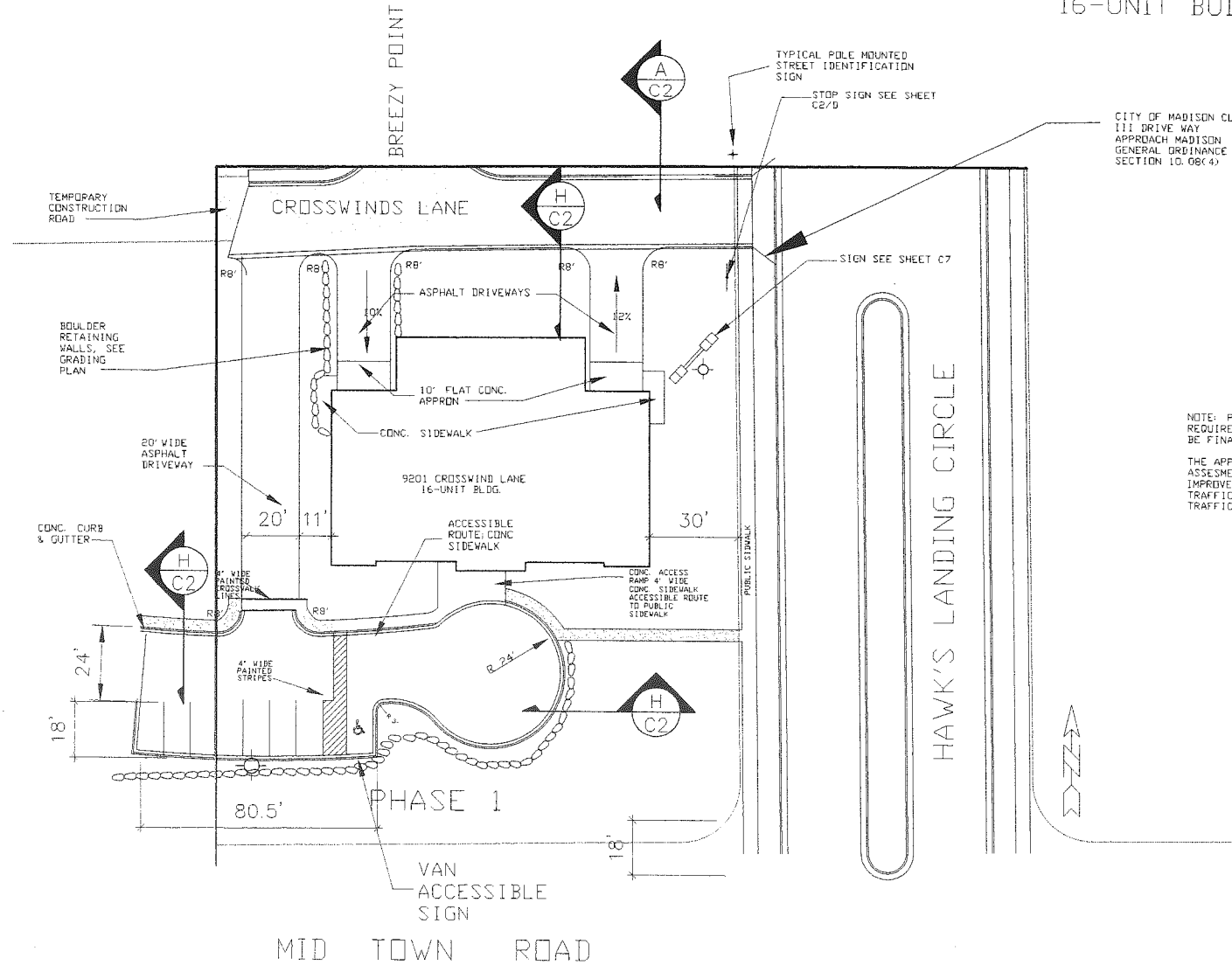
"CROSSWINDS" AT HAWKS LANDING CONDOMINIUMS
 CITY OF MADISON, WISCONSIN

Drawn: KKA
 Checked: _____
 Date: 11-8-00

Revisions:
11-16-00
12-05-00

Project No. 9911063
 Sheet No. C2
 Of 42 Sheets

PHASE 1 2000 -2001 CONSTRUCTION SEASON
 DUPLEX BUILDINGS: 1,2,3,4,5,6,&7
 BEGIN WITH BLDG. 1 & 6
 16-UNIT BUILDING: 1



CITY OF MADISON CLASS III DRIVE WAY APPROACH MADISON GENERAL ORDINANCE SECTION 10.08(4)

NOTE: PUBLIC SIGNING AND MARKING RELATED TO THE DEVELOPMENT MAY BE REQUIRED BY THE CITY TRAFFIC ENGINEER FOR WHICH THE DEVELOPER SHALL BE FINANCIALLY RESPONSIBLE.
 THE APPLICANT SHALL EXECUTE A WAIVER OF NOTICE AND HEARING ON SPECIAL ASSESSMENTS FOR THE FUTURE TRAFFIC SIGNAL AND ASSOCIATED STREET IMPROVEMENT AT THE INTERSECTIONS THE CITY PLANS TO SIGNALIZE. THE TRAFFIC SIGNAL WAIVER WILL ALSO REQUIRE A DEPOSIT FOR FUTURE AREA TRAFFIC AND ASSOCIATED INTERSECTION CHANGES

SITE DEVELOPMENT PLAN/PHASE 1
 SCALE: 1" = 20'-0"

GORMAN & COMPANY, INC.
 REAL ESTATE DEVELOPMENT AND MANAGEMENT
 1244 S. PARK ST. MADISON, WI 53715
 (608)257-8778 direct (608)257-9000 fax

"CROSSWINDS"
 AT HAWK'S LANDING
 CONDOMINIUMS - 16-UNIT
 CITY OF MADISON, WISCONSIN

Drawn: *jk*

Checked: *SRB*

Date: 11-8-00

Revisions:	
1	11-16-00 ACCESSIBLE ROUTE
2	12-05-00 SIDEWALK PARKING

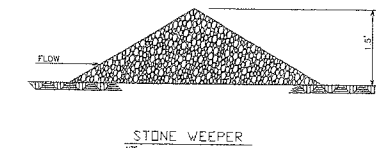
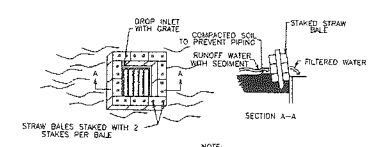
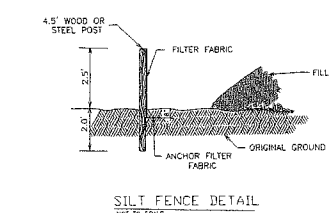
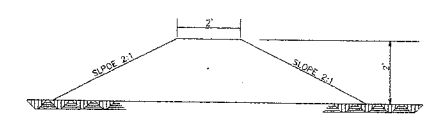
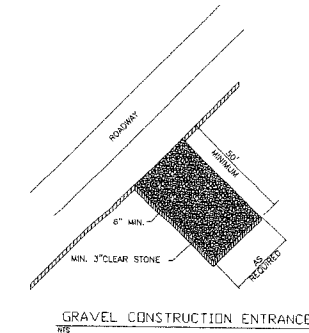
Project No.

0009096

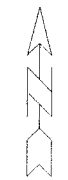
Sheet No.

C3

Of 42 Sheets



- SITE GRADING NOTES:**
- GRAVEL CONSTRUCTION ENTRANCE SHALL BE INSTALLED AT ALL LOCATION USED FOR ACCESS ONTO THE SITE. THE ENTRANCE SHALL BE A MINIMUM OF 3'0" WIDE, 2'0" LONG AND 6" THICK. CONSTRUCTION ENTRANCE SHALL BE MAINTAINED IN A CONDITION WHICH WILL PREVENT THE TRACKING OF MUD ONTO PUBLIC RIGHT-OF-WAY.
 - SILT FENCE SHALL BE PLACED ON THE LOW SIDE OF EACH PHASE BEFORE CONSTRUCTION OF THAT PHASE BEGINS.
 - ALL DISTRIBUTED AREAS AT A MINIMUM SHALL BE RESTORED WITH TOPSOIL, SEED, FERTILIZER AND MULCH. THE CONTRACTOR SHALL SEED AND FERTILIZE IN PHASES TO MINIMIZE THE RISK OF EROSION.



SITE GRADING & EROSION CONTROL PLAN
SCALE: 1" = 60'-0"

D'ONOFRIO, KOTKKE AND ASSOCIATES, INC.
7530 WESTWARD WAY
MADISON, WISCONSIN 53717
TEL: 608-833-7530
FAX: 608-833-1088

DATE: 2-15-00
FN: 99-04-120

GORMAN COMPANY, INC.
REAL ESTATE DEVELOPMENT AND MANAGEMENT
1244 S. PARK ST. MADISON, WI 53715
(608)257-8778 direct (608)257-4110 Ext. 310 fax (608)257-9002

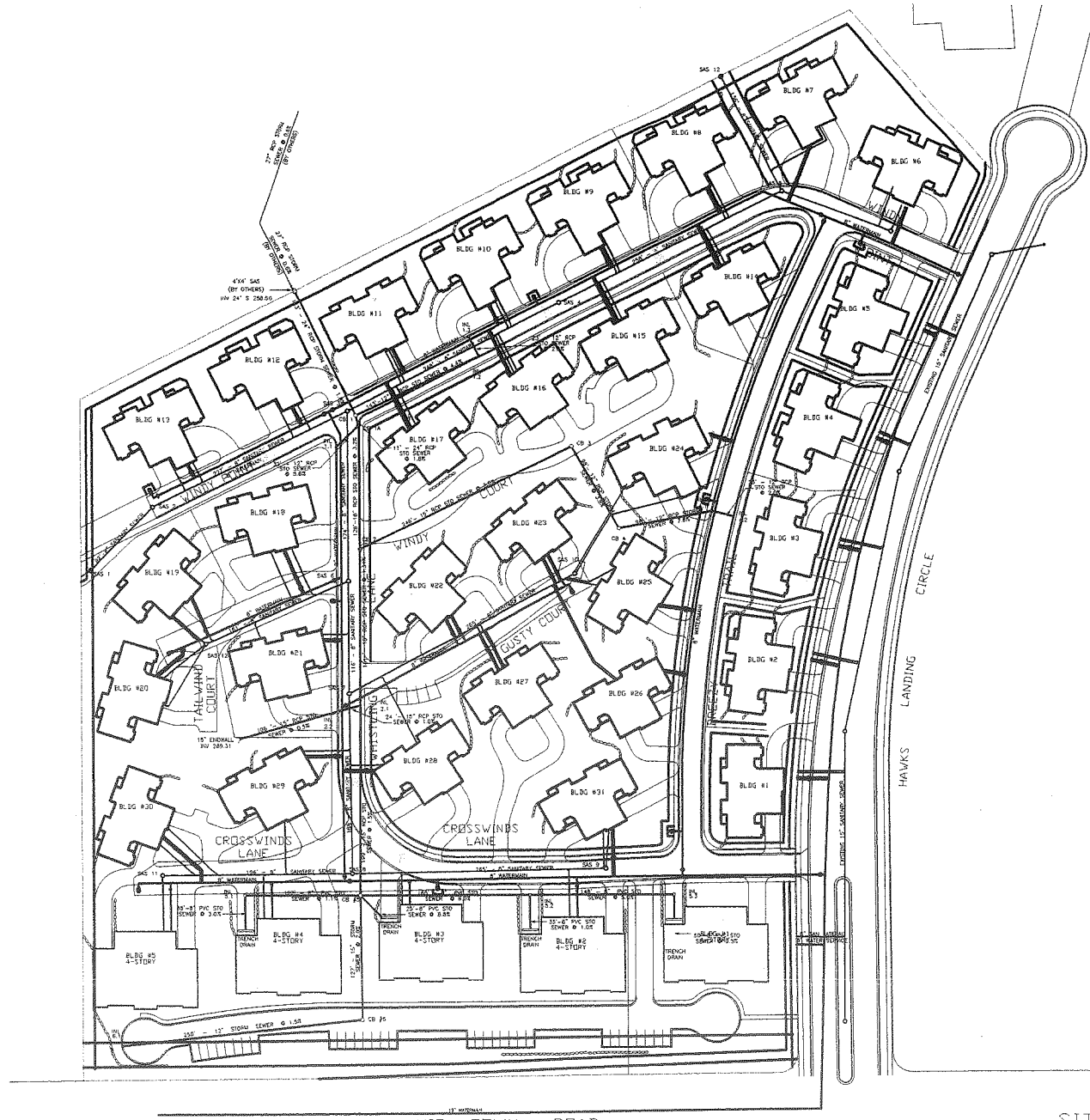
"CROSSWINDS" AT HAWKS LANDING CONDOMINIUMS
CITY OF MADISON, WISCONSIN

Drawn: K...
Checked: ...

Date: 2-23-00

Revisions	GENERAL
1 3-6-00	GENERAL
2 5-9-00	STAKE
3 6-30-00	LATERAL
4 7-25-00	SLIT
5 9-18-00	SLIT
6 10-3-00	SLIT
7 10-11-00	SLIT
8 10-20-00	SILT
9 10-24-00	SILT
10 12-1-00	EROSION
11 12-8-00	SILT
12 12-13-00	SILT

Project No. 9911063
Sheet No. C-4
Of Sheets



SITE GRADING AND SANITARY SEWER NOTES:

- SANITARY LATERALS AND WATER SERVICES SHALL BE EXTENDED TO THE PROPOSED BUILDINGS.
- SILT FENCE SHALL BE PLACED ON THE LOW SIDE OF EACH PHASE BEFORE CONSTRUCTION OF THAT PHASE BEGINS.
- WATER SERVICES ARE 1" DIAMETER COPPER UNLESS NOTED.
- ALL RISING CASSETT LINE TO BUILDING SHALL BE OWNED AND MAINTAINED BY THE CROSSWINDS CONDOMINIUM ASSOC.
- ALL STORM SEWERS AND STORM STRUCTURES SHALL BE OWNED AND MAINTAINED BY THE CONDOMINIUM ASSOCIATION.
- SEPARATE SANITARY SEWER LATERAL SHALL BE INSTALLED TO EACH UNIT UNIT OF A DUPLEX BUILDING. THE LATERALS SHALL BE LOCATED SUCH THAT THEY ENTER THE BUILDING ON OPPOSITE SIDES OF A COMMON WALL.

SITE DRAINING NOTES:
 ALL SANITARY SEWER OTHER THAN PHASE I SHALL BE OWNED AND MAINTAINED BY THE CONDOMINIUM ASSOCIATION.
 12-18-00
 E.S. Schaefer

SANITARY SEWER ACCESS STRUCTURES

SAS 1 RM = 263.5 HW SW NE = 284.5 D = 9.0'	SAS 8 RM = 282.5 HW SW NE = 286.75 HW NE = 274.80 D = 13.5'
SAS 2 RM = 263.77 HW SW NE = 254.85 D = 8.5'	SAS 9 RM = 288.00 HW SW NE = 288.13 D = 9.7'
SAS 3 RM = 268.24 HW SW NE = 255.72 HW SE = 264.03 D = 10.5'	SAS 10 RM = 284.25 HW SW NE = 275.18 D = 9.1'
SAS 4 RM = 275.98 HW SW NE = 266.94 D = 9.0'	SAS 11 RM = 277.58 HW NE = 268.51 D = 9.0'
SAS 5 RM = 289.22 HW SW NE = 271.48 HW NE = 275.74 D = 7.8'	SAS 12 RM = 269.47 HW NE = 260.5 D = 9.0'
SAS 6 RM = 271.91 HW SW NE = 259.46 HW SE = 262.75 D = 9.0'	
SAS 7 RM = 275.95 HW NE = 265.0 HW SE = 266.14 D = 9.0'	

STORM SEWER STRUCTURES

SWS 1 RM = 268.35 HW SW NE = 281.07 HW SE = 261.07	SWS 11 RM = 267.53 HW NE = 263.98	SWS 12 RM = 272.15 HW SW NE = 268.56 HW SE = 268.40
SWS 1A RM = 266.40 HW SW NE = 261.37 HW SE = 262.12	SWS 13 RM = 272.15 HW NE = 268.06	
SWS 2 RM = 271.32 HW SW NE = 265.87 HW SE = 266.12	SWS 14 RM = 276.19 HW SW NE = 268.98 HW SE = 265.54	SWS 15 RM = 276.36 HW SW NE = 265.78 HW SE = 265.78
SWS 3 RM = 275.05 HW SW NE = 275.51 HW SE = 275.76		
SWS 4 RM = 283.75 HW SW NE = 278.48 HW SE = 275.89	SWS 4.1 RM = 280.89 HW SW NE = 287.23	SWS 4.2 RM = 280.89 HW SW NE = 287.69
SWS 5 RM = 282.70 HW SW NE = 271.51 HW SE = 271.51 HW SW NE = 275.70 HW SE = 275.70	SWS 5.1 RM = 275.55 HW SW NE = 274.35 HW SE = 275.55	SWS 5.2 RM = 275.55 HW SW NE = 287.60 HW SE = 287.75
SWS 6 RM = 286.40 HW SW NE = 274.05 HW SE = 274.35	SWS 6.1 RM = 281.52 HW SW NE = 278.05	

SITE UTILITY PLAN
 SCALE: 1" = 60'-0"



D'ONOFRIO, KOTTKE AND ASSOCIATES, INC.
 7530 WESTWARD WAY
 MADISON, WISCONSIN 53717
 TEL: 608-833-7930
 FAX: 608-833-1089

DATE: 3-15-00
 PL: 99-04-120

URMAN
 REAL ESTATE DEVELOPMENT AND MANAGEMENT
 1244 S. PARK ST. MADISON, WI 53715
 (608) 257-4410 Ext. 310 Fax: (608) 257-9042

"CROSSWINDS" AT HAWKS LANDING CONDOMINIUMS
 CITY OF MADISON, WISCONSIN

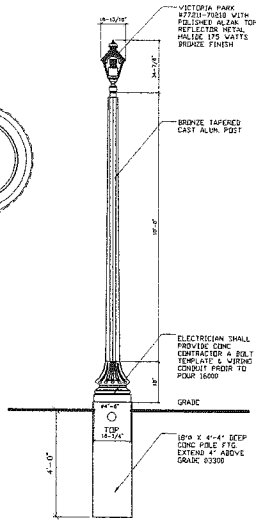
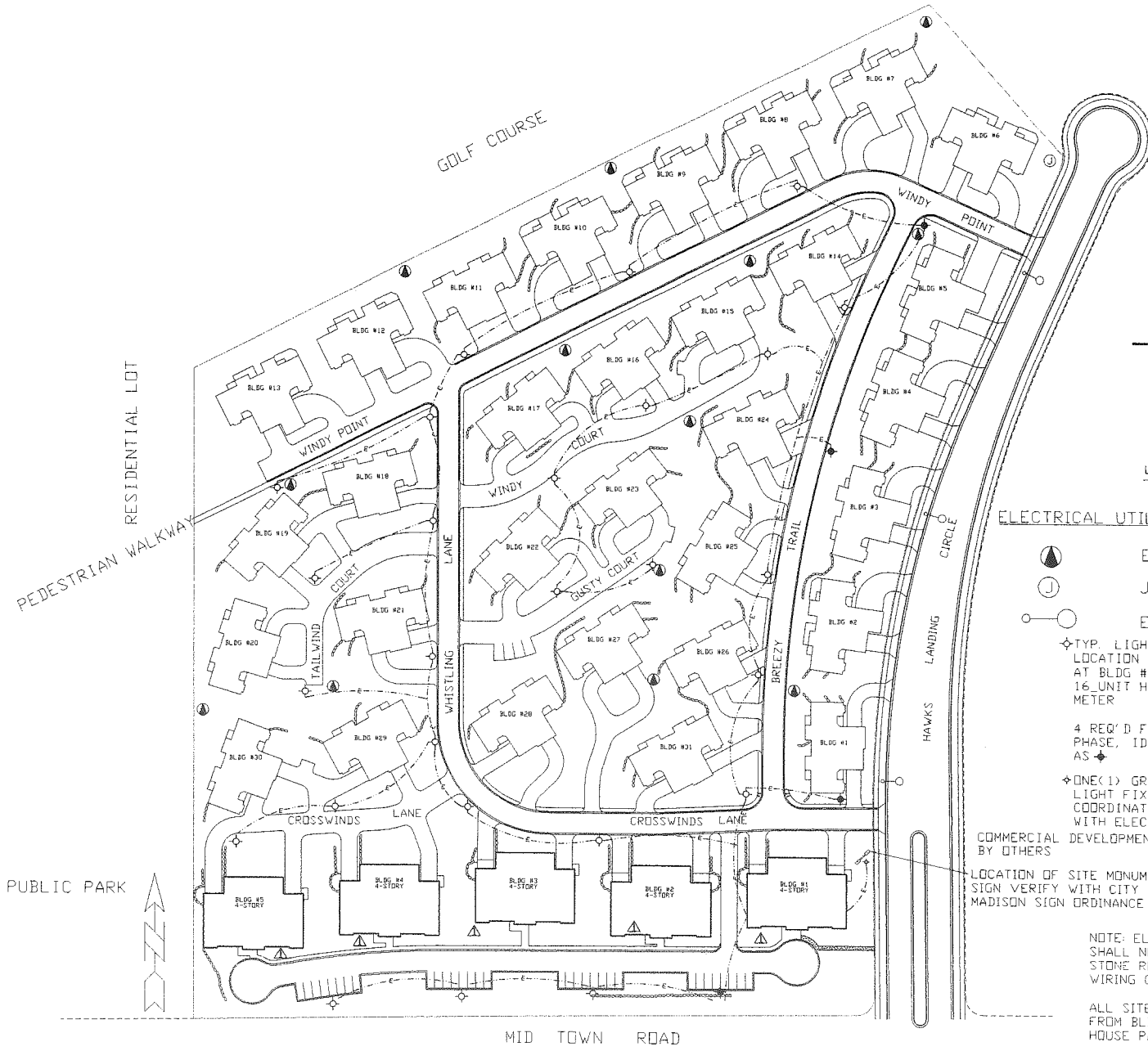
Drawn: [Signature]
 Checked: [Signature]

Date: 2-23-00

Revisions

1	3-6-00	GENERAL
2	5-5-00	STREET
3	5-30-00	WATER
4	7-25-00	WATER
5	9-18-00	WATER
6	10-3-00	4-STORY
7	10-11-00	WATER
8	10-20-00	WATER
9	10-24-00	WATER
10	12-1-00	WATER
11	12-9-00	WATER
12	12-13-00	WATER

Project No: **9911063**
 Sheet No: **C-5**
 Of Sheets: **5**



LIGHT POST ELEVATION

ELECTRICAL UTILITIES KEY

- ELECTRICAL TRANSFORMER
- JUNCTION BOX
- EXISTING STREET LIGHT

◆ TYP. LIGHT POST LOCATION CONTROL AT BLDG #1 16-UNIT HOUSE METER

4 REQ'D FIRST PHASE, IDENTIFIED AS ◆

◆ ONE (1) GROUND MOUNTED LIGHT FIXTURE COORDINATE INSTALLATION WITH ELECTRICIAN 16000

COMMERCIAL DEVELOPMENT BY OTHERS

LOCATION OF SITE MONUMENT SIGN VERIFY WITH CITY OF MADISON SIGN ORDINANCE

NOTE: ELECTRICAL CONTRACTOR SHALL NOTE LOCATIONS OF ALL STONE RETAINING WALLS FOR WIRING CONFLICTS

ALL SITE LIGHTING TO BE FED FROM BLDG #1; 16-UNIT BLDG HOUSE PANEL

SITE LIGHTING AND SIGNAGE LOCATION PLAN

SCALE: 1" = 60'-0"

GORMAN
CORPORATION, INC.

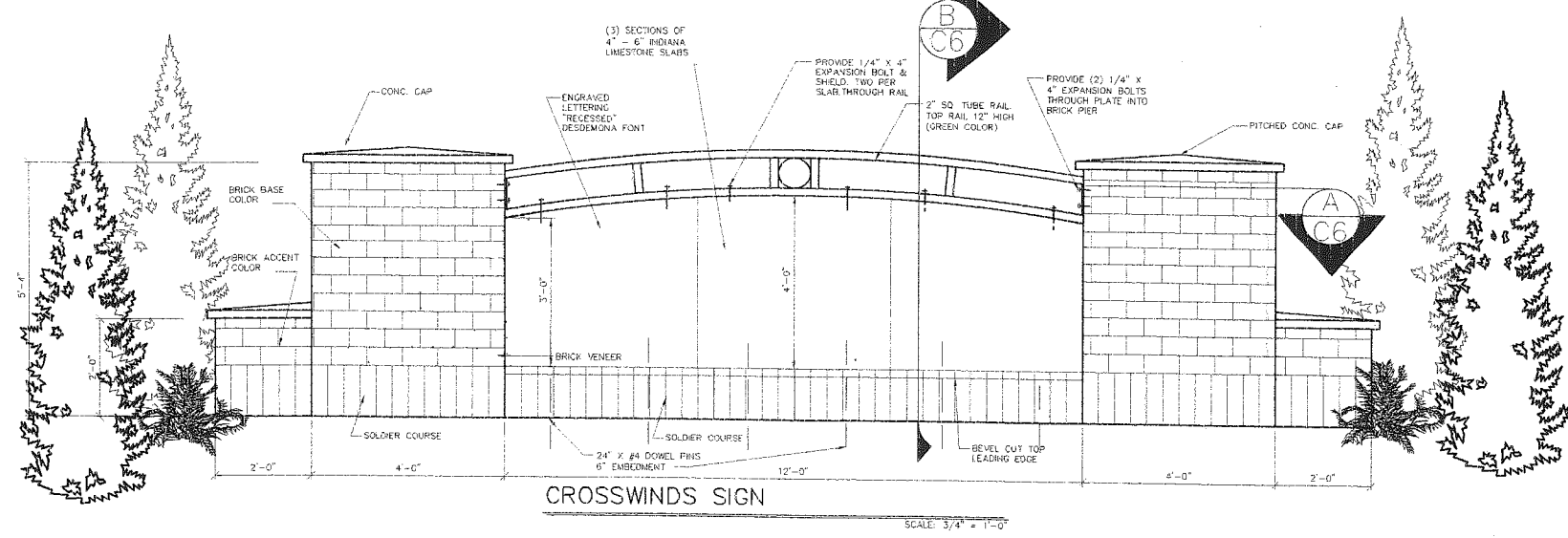
REAL ESTATE DEVELOPMENT AND MANAGEMENT
1244 S. PARK ST., MADISON, WI 53715
(608) 257-9778 direct (608) 257-4410 Ext. 300 Fax (608) 257-2002

"CROSSWINDS" CONDOMINIUMS AT HAWKS LANDING CITY OF MADISON, WISCONSIN

Drawn: KKA
Checked:
Date: 11-8-00

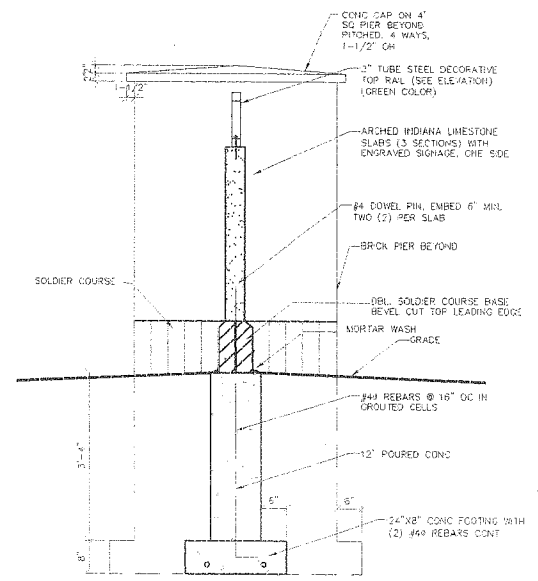
Revisions:	DATE	BY	REVISION
1	12-6-00	GENERAL CONTRACTOR	GENERAL CONTRACTOR
2	5-5-00	STREET LIGHTS	STREET LIGHTS
3	6-30-00	LANDSCAPE	LANDSCAPE
4	7-25-00	UTILITY	UTILITY
5	9-18-00	REVISION	REVISION

Project No. 9911063R
Sheet No. 06
Of 42 Sheets



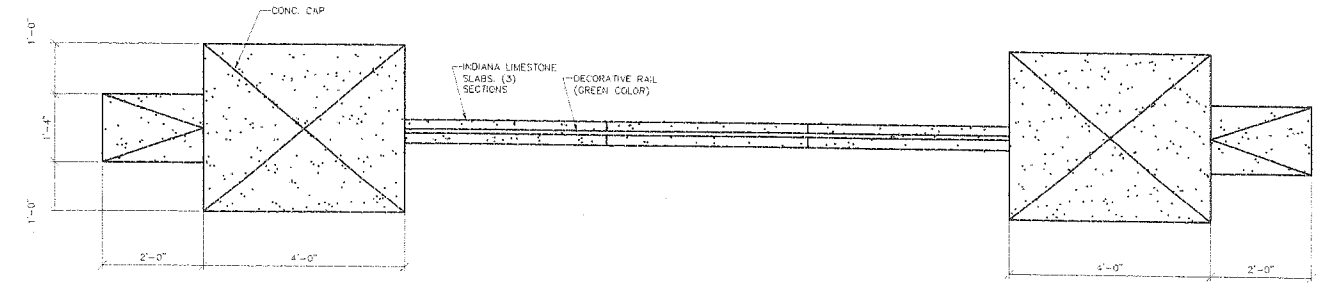
CROSSWINDS SIGN

SCALE: 3/4" = 1'-0"



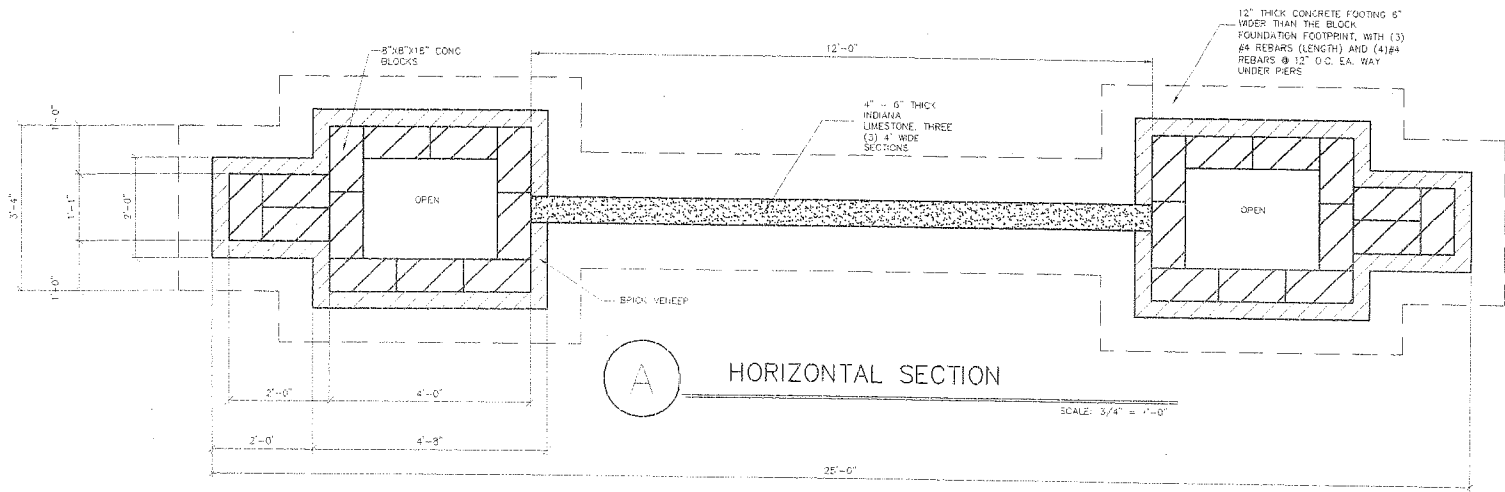
VERTICAL SIGN SECTION

SCALE 3/4" = 1'-0"



TOP VIEW

SCALE: 3/4" = 1'-0"



HORIZONTAL SECTION

SCALE: 3/4" = 1'-0"

GORMAN
 & COMPANY, INC.
 REAL ESTATE DEVELOPMENT AND MANAGEMENT
 1244 S. PARK ST. MADISON, WI 53715
 (608)257-8778 direct (608)257-9002 fax

"CROSSWINDS"
 AT HAWKS LANDING
 CONDOMINIUMS - 16 UNIT
 CITY OF MADISON, WISCONSIN

Drawn: JJK

Checked: SRS

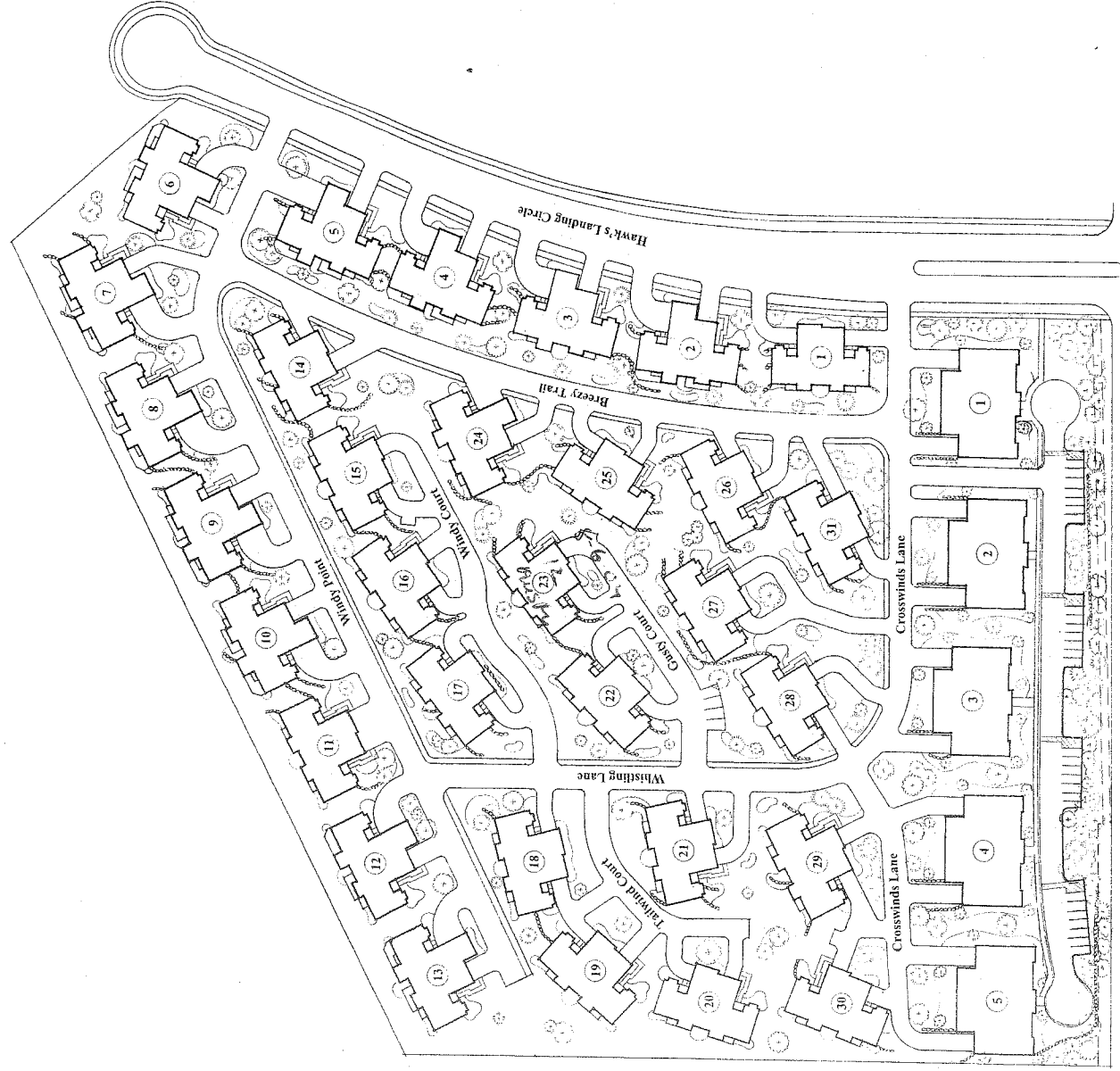
Date: 10-12-20

Revisions:

Project No.
 0009096

Sheet No.












C7
 Of 40 Sheets



CROSSWINDS
Hawk's Landing

Gorman & Company



-  GREEN ASH 'SUMMIT' 2 1/2"
-  SUGAR MAPLE 2 1/2"
-  GREEN MOUNTAIN 2 1/2"
-  NORTHERN RED OAK 2 1/2"
-  AUSTRALIAN PINE 6-7'
-  WHITE PINE 6-7'
-  SPRECHER'S 6'
-  WINTERBURN 6'
-  WINTERBURN 6'
-  RED THREADED DOGWOOD SW BALLETT
-  PINKBERRY 6-8" V. B. S. N. H. H.

Glacier LANDSCAPE INC.
 THE ONLY TO VOUCHER FOR EXCELLENCE
 845-5111 FAX 845-3335

LANDSCAPE DESIGN FOR:
 GORMAN & COMPANY
 CROSSWINDS & HAWK'S LANDING
 SHEET 1

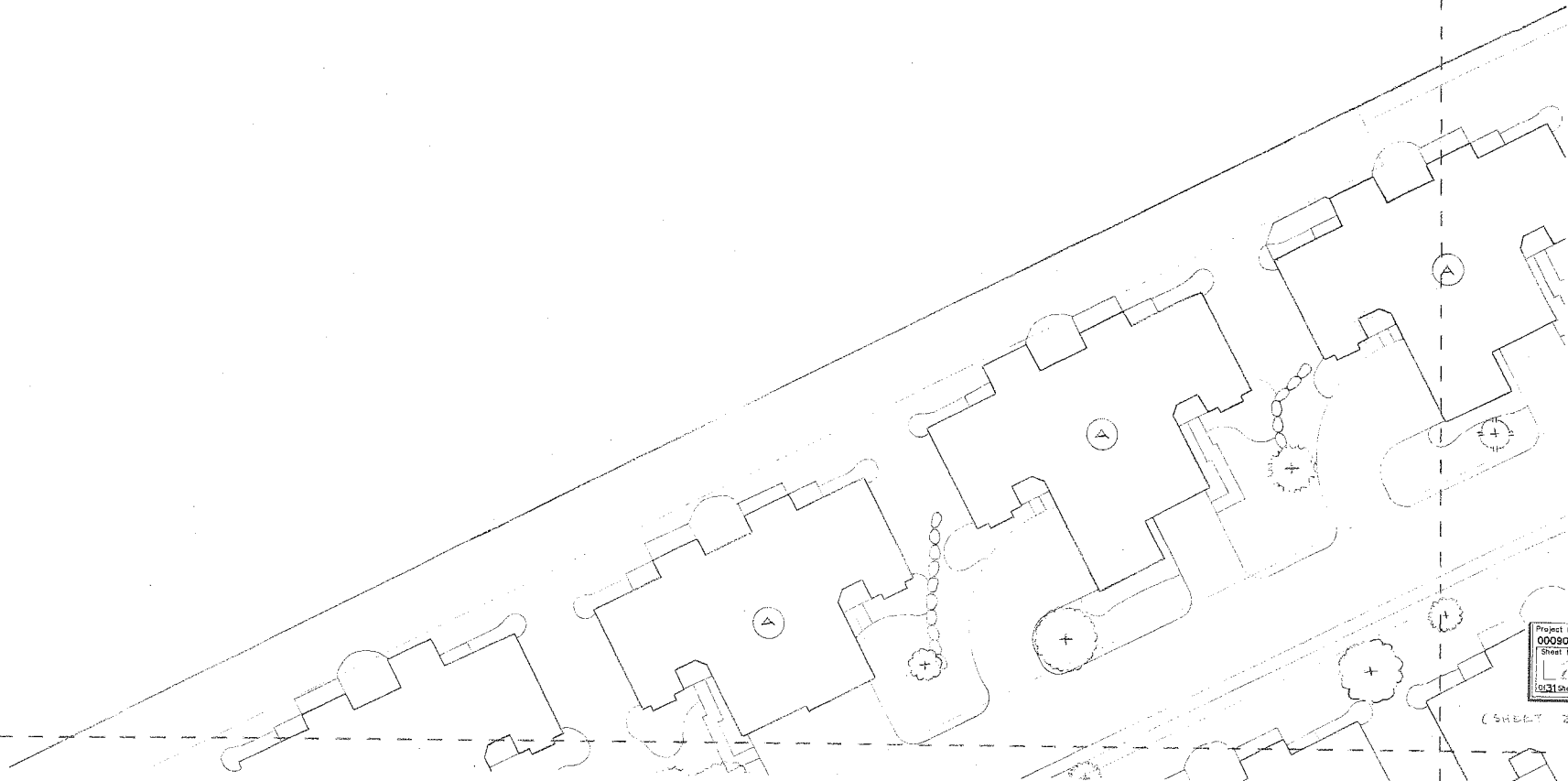
DATE: 8/5
 DESIGN: T.M.
 DRAWN: W.H. / S.M.

SCALE: 1" = 20'
 NORTH

Copyright © 2002. No reproduction of this design to any form is permitted without the written permission of Glacier Landscape Incorporated.

(SHEET 1)

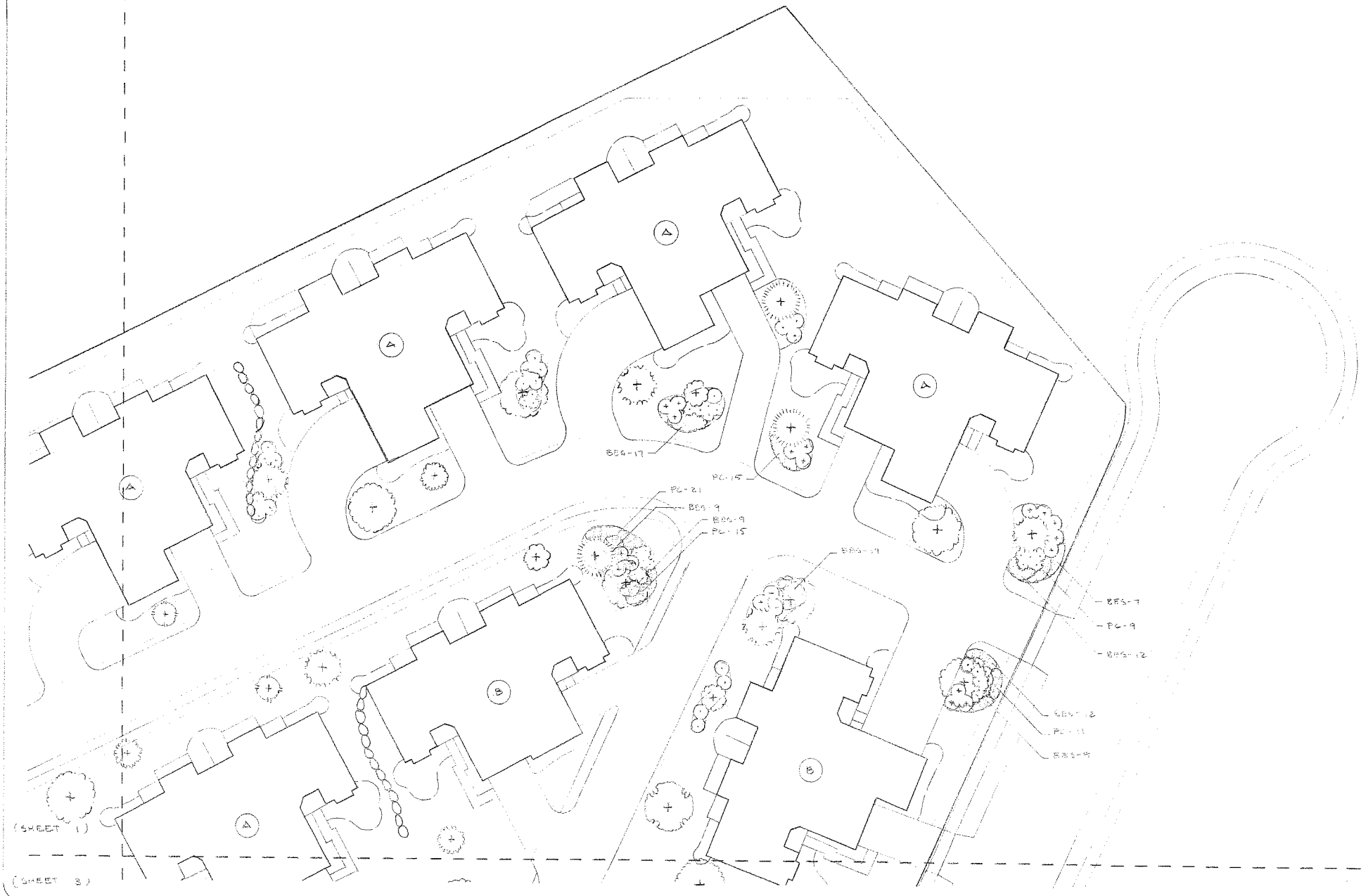
(SHEET 3)












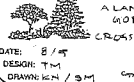


Project No. 0009096
 Sheet No. 1
 of 3 Sheets

(SHEET 2)

(SHEET 4)



-  GREEN ASH 'SUMMIT' 3/8"
-  SUGAR MAPLE 2 1/2"
-  GREEN MOUNTAIN 2 1/2"
-  NORTHERN RED OAK 2 1/2"
-  AUSTRALIAN PINE 6-7'
-  WHITE PINE 6-7'
-  JAPANESE MAPLE 6'
-  EASTERN RED CEDAR 6'
-  LANTANA (TROPICAL) 6'
-  BUTTERNUT 6'
-  RED TWIGGED DOGWOOD 4'
-  GREEN BURNING BUSH 4'

Glacier LANDSCAPE INC.
 7366 HWY. 10 VERONA WI. 53592
 845-5111 FAX 845-3335

A LANDSCAPE DESIGN FOR
 WORMAN & COMPANY
 CROSLANDS & WILKINSON'S LANDING
 SHEET 2

DATE: 8/97
 DESIGN: T.M.
 DRAWING: G.M. / G.M.

Copyright © 1997. No reproduction of this design is to be made without the written permission of Glacier Landscape, Inc.

(SHEET 1)
 (SHEET 3)

(SHEET 2)


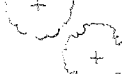

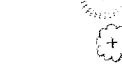
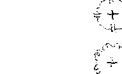






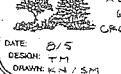



(SHEET 4)

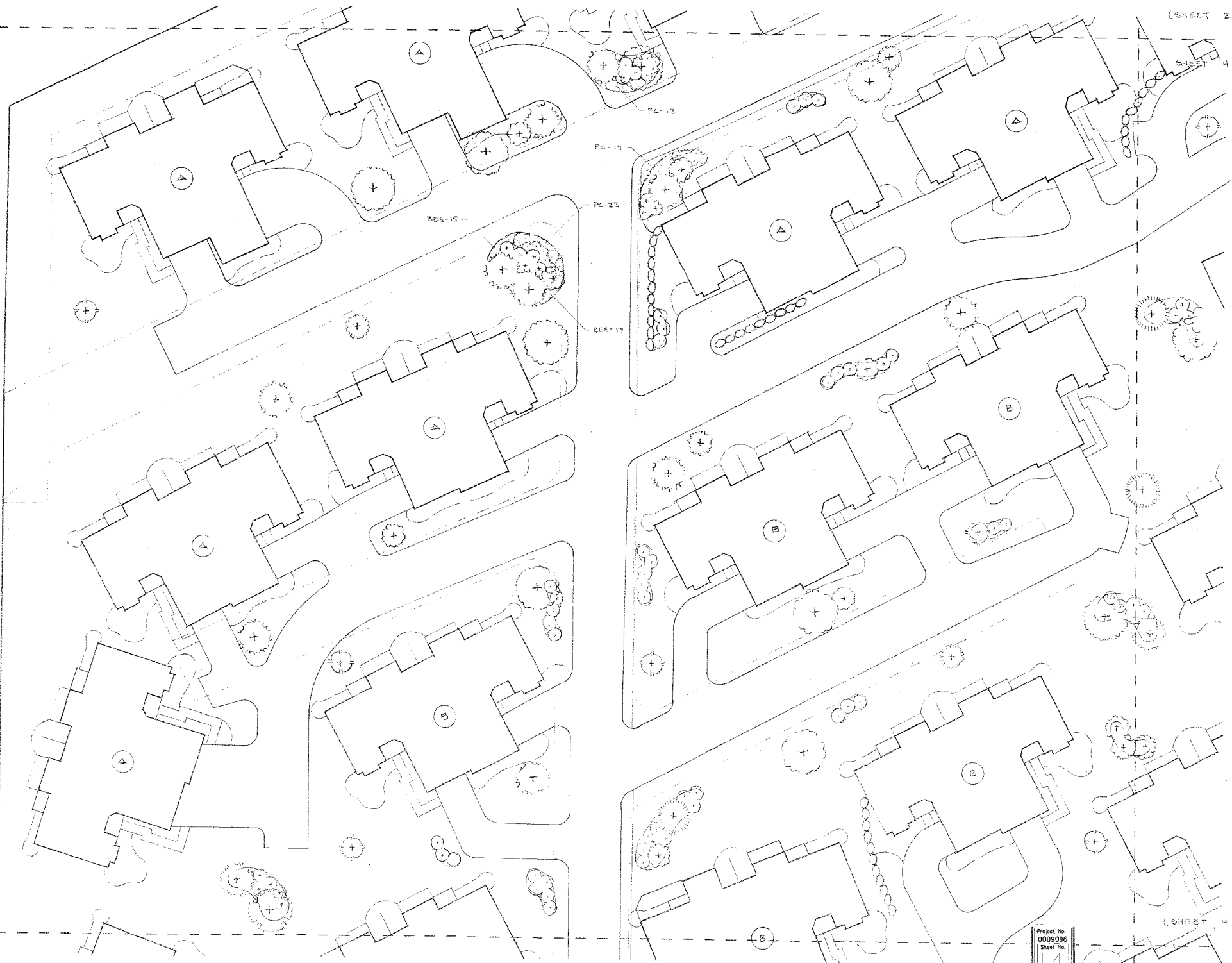
Project No.
 0009096
 Sheet No.
 13
 of 31 sheets

(SHEET 1)

(SHEET 2)

(SHEET 3)

-  GREEN ASH (SHRUB) 2'2"
-  SUGAR MAPLE 2'2"
-  GREEN MOUNTAIN 2'2"
-  NORTHERN RED OAK 3'2"
-  ASHOKA PINE 5'7"
-  WHITE PINE 6'7"
-  AMERICAN HOLLY 6'
-  WINTER BOUQUILLIEVE 6'
-  RED THICKET 3'0"
-  RED THICKET 3'0"
-  RED THICKET 3'0"
-  RED THICKET 3'0"
-  RED THICKET 3'0"
-  RED THICKET 3'0"
-  RED THICKET 3'0"



Glacier LANDSCAPE INC.
 1280 HWY. 70 VERONA, WI. 53593
 945-8111 FAX 945-8335

A LANDSCAPE DESIGN FOR:
 GORMAN + COMPANY
 CROSSWINDS & HAWK'S LANDING
 SHEET 3

DATE: 8/5
 DESIGN: T.M.
 DRAWN: K.N./S.M.

Copyright © 2002. All reproductions of this design in any form is prohibited without the written permission of Glacier Landscape Inc.

NORTH
 SCALE
 1" = 2'

(SHEET 3)

(SHEET 5)

Project No.
0009096
 Sheet No.
L4
 of 31 Sheets

(SHEET 4)

(SHEET 5)

(SHEET 1)

(SHEET 3)





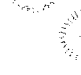
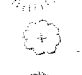
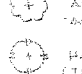
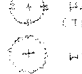

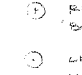
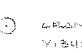
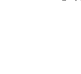
(SHEET 3)

(SHEET 4)

(SHEET 2)

(SHEET 4)



-  GREEN ASH 60'x100' 2 1/2"
-  SUGAR MAPLE 2 1/2"
-  GREEN MOUNTAIN 2 1/2"
-  NORTHERN RED OAK 2 1/2"
-  AUSTRALIAN PINE 6'
-  WHITE PINE 6'
-  AMERICAN ELM 6'
-  EASTERN SPRUCE 6'
-  HAWTHORN (THORNLESS) 6'
-  WITCH HAZEL 6'
-  RED-TIPPED DOGWOOD 2'
-  GREEN SYCAMORE 6'

Glacier LANDSCAPE INC.
 7300 HWY. 60 VERONA, VA. 22130
 845-5111 FAX 845-3335

A LANDSCAPE DESIGN FOR:
 GORMAN & COMPANY
 CROSSWINDS & WALKS LANDSCAPE

DATE: 5/5
 DESIGN: T.M.
 DRAWN: R.H. / S.M.

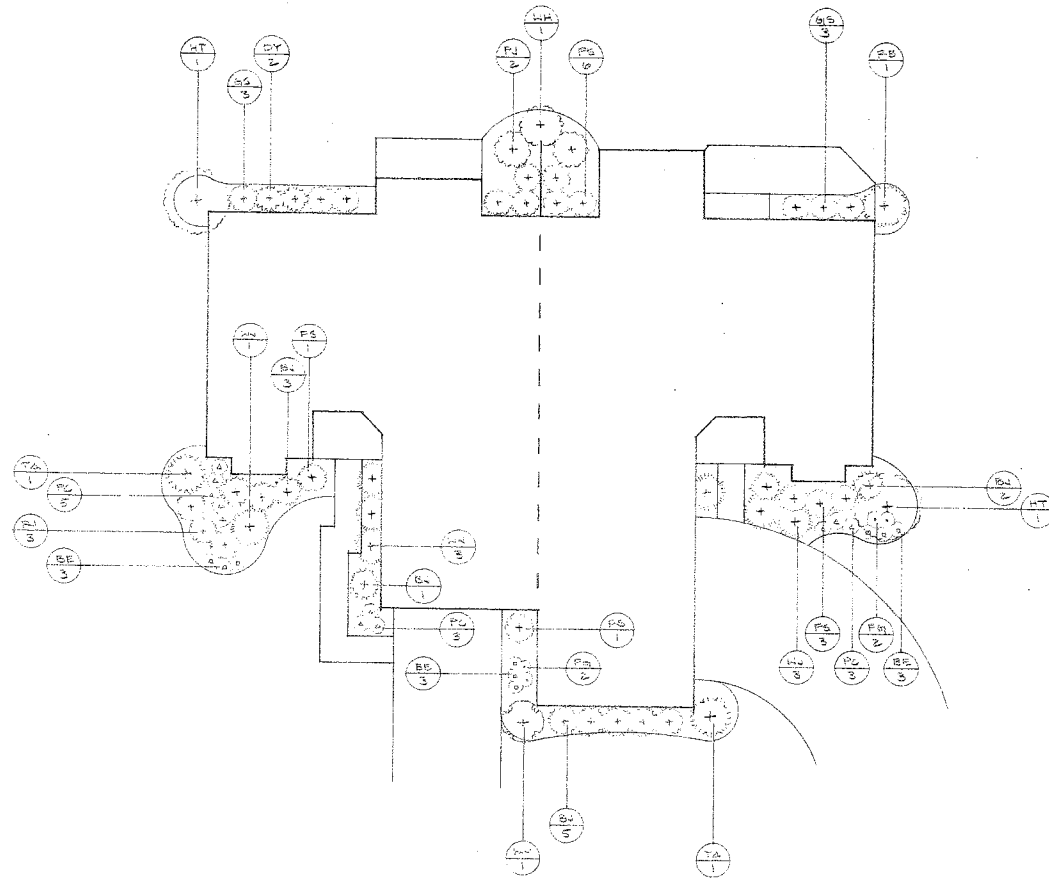
Product No. 0009098
 Sheet No. L5
 of 31 sheets

(SHEET 4)

(SHEET 4)

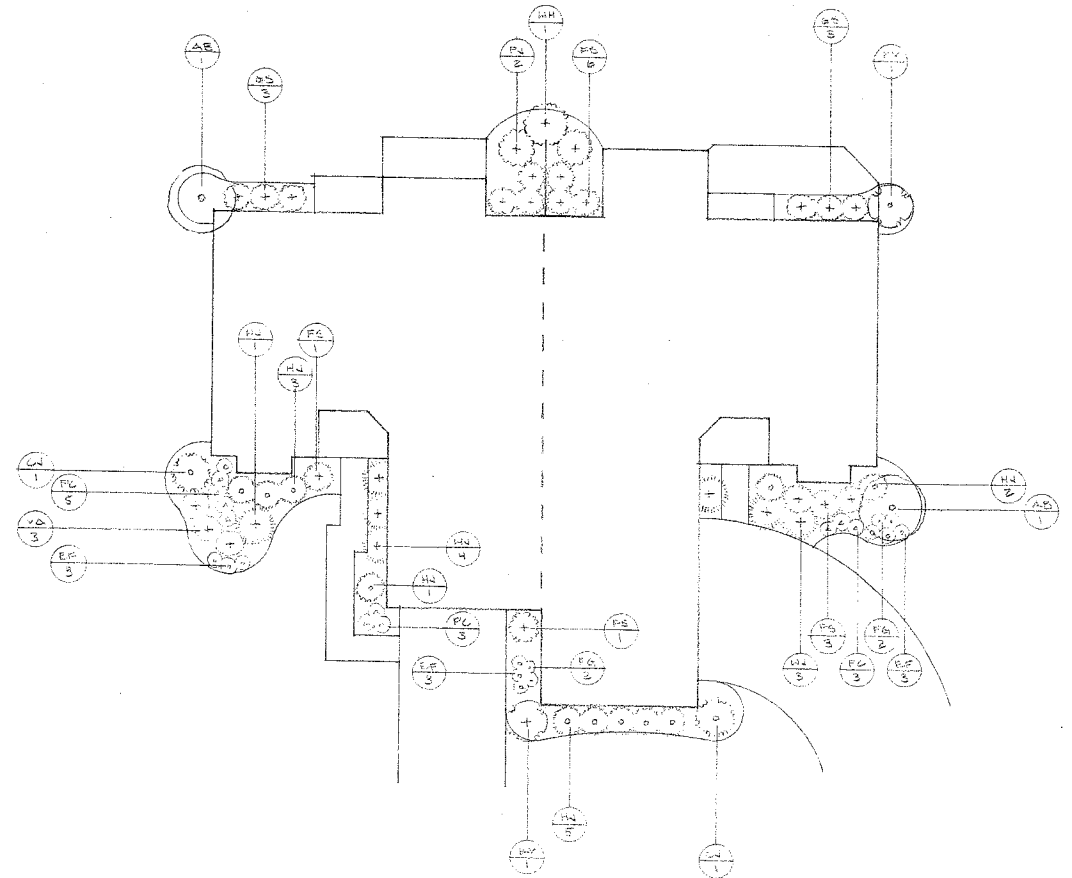
DUPLEX - STYLE A

SCALE 1" = 10'



DUPLEX - STYLE B

SCALE 1" = 10'

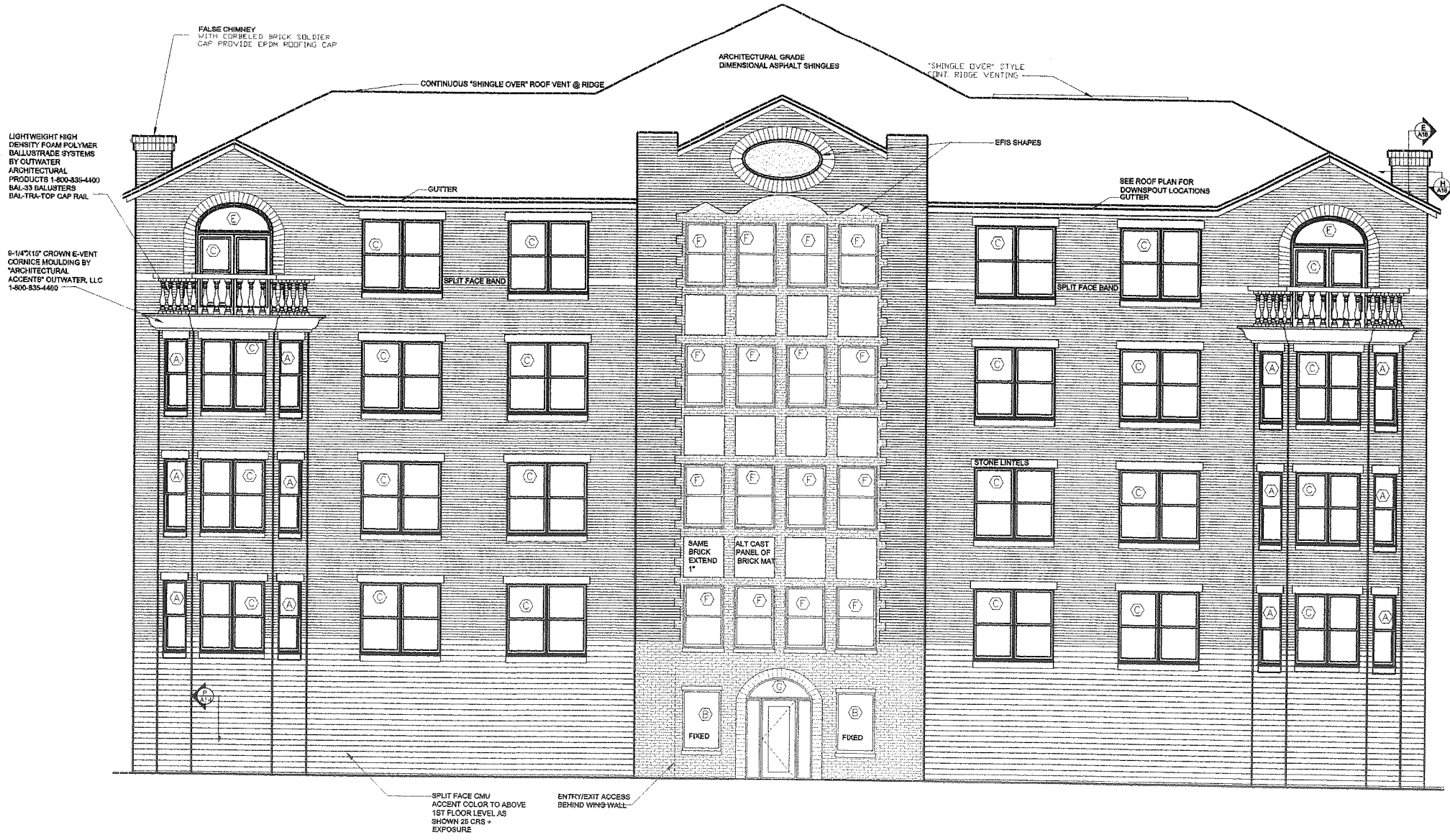


- AB AMERICAN BURNING BUSH
- BN BURNING BUSH
- CA CAMELIA
- FS FORSYTHIA
- GS GOLDEN SPIDER

- HA HAZEL
- HT HAWTHORN
- HY HYDRANGEA
- PL RHODODENDRON
- RB RED TWIG DOGWOOD

- RI RED TWIG DOGWOOD
- TA TERNY ARBOVITAE
- VA VIBURNUM
- WH WITCHHAZEL
- WI WISCONSIN

- 24 BEB BLACK EYED SUSAN
- 4' BF BURNING BUSH
- 24' FB FORSYTHIA
- 3' PL PURPLE CORNFLOWER



SOUTH ELEVATION - BUILDING NO. 1

TYPICAL EXPOSURE ALL BUILDINGS SCALE: 1/4" = 1'-0"

GORMAN
 & COMPANY, INC.
 REAL ESTATE DEVELOPMENT AND MANAGEMENT
 1244 S. PARK ST. MADISON, WI 53715
 (608)757-8778 direct (608)757-4410 Ext. 310 fax (608)757-9662

"CROSSWINDS"
 AT HAWKS LANDING
 CONDOMINIUMS - 16-UNIT
 CITY OF MADISON, WISCONSIN

Drawn: JK
 Checked: SR

Date: 10-13-00

Revisions:

Project No.
 0009096
 Sheet No.
 A10
 Of 40 Sheets



EAST ELEVATION - BUILDING NO. 1

SCALE: 1/4" = 1'-0"

GORMAN
 & COMPANY, INC.
 REAL ESTATE DEVELOPMENT AND MANAGEMENT
 1244 S. PARK ST. MADISON, WI 53715
 (608)257-8778 Direct (608)257-4410 Ext. 310 Fax: (608)257-9802

"CROSSWINDS"
 AT HAWKS LANDING
 CONDOMINIUMS - 16-UNIT
 CITY OF MADISON, WISCONSIN

Drawn: *JK*

Checked: *SRB*

Date: 10-13-00

Revisions:

Project No.
 0009096

Sheet No.
A11
 Of 40 Sheets



WEST ELEVATION - BUILDING NO. 1

TYPICAL EXPOSURE FOR WEST SIDE OF ALL BUILDINGS

SCALE: 1/4" = 1'-0"

GORMAN
COMPANY, INC.

REAL ESTATE DEVELOPMENT AND MANAGEMENT
1244 S. PARK ST. MADISON, WI 53715
(608) 278-4444 FAX: (608) 278-8800

"CROSSWINDS"
AT HAWKS LANDING
CONDOMINIUMS - 16-UNIT
CITY OF MADISON, WISCONSIN

Drawn: JK

Checked: SRS

Date: 10/15/07

Revisions:

No.	Description

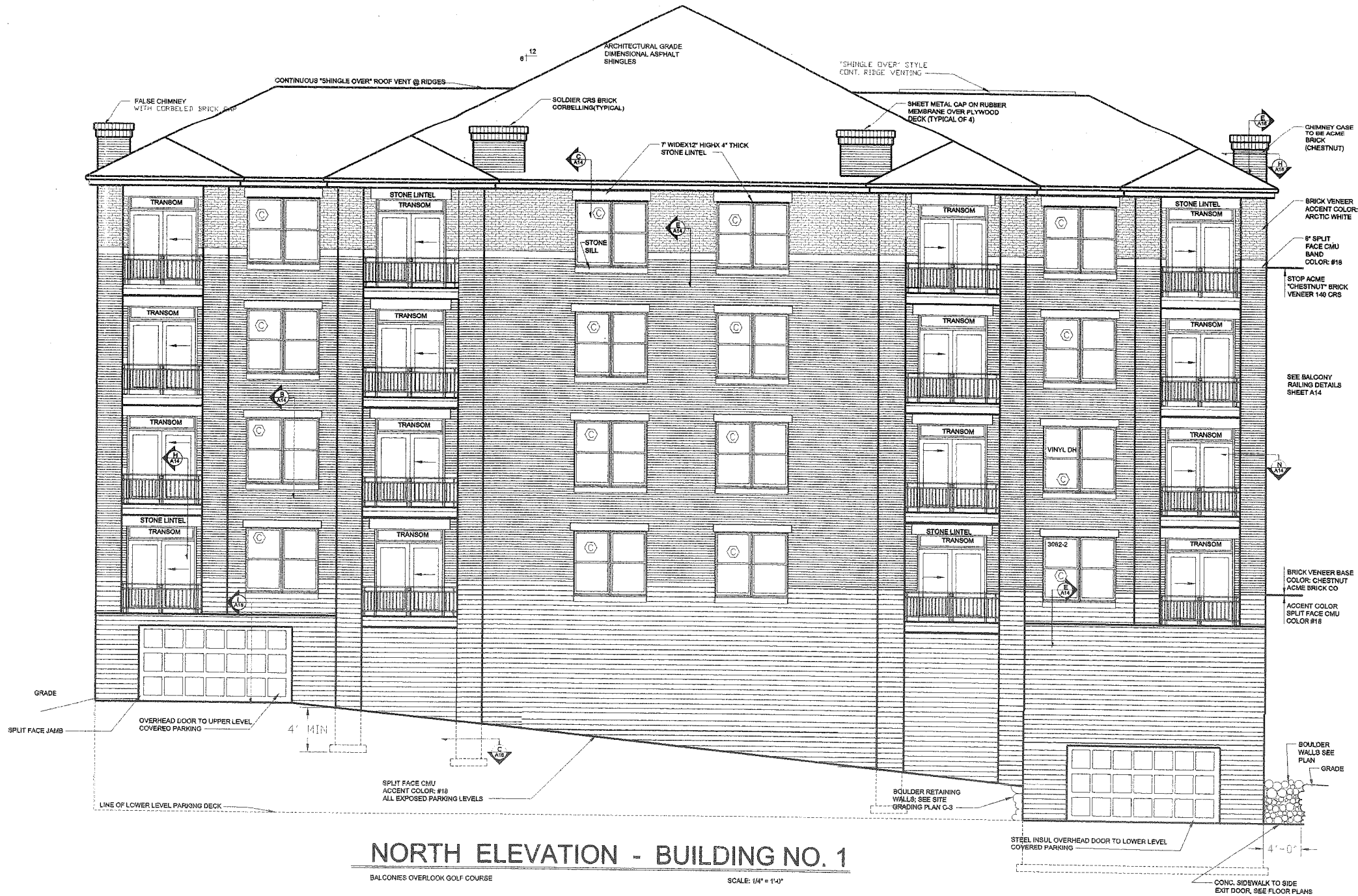
Project No.

0009096

Sheet No.

A12

Of 40 Sheets



NORTH ELEVATION - BUILDING NO. 1

BALCONIES OVERLOOK GOLF COURSE

SCALE: 1/4" = 1'-0"

GORMAN
 & COMPANY, INC.
 REAL ESTATE DEVELOPMENT AND MANAGEMENT
 1244 S. PARK ST. MADISON, WI 53715
 (608)257-8778 Fax: (608)257-9002

"CROSSWINDS"
 AT HAWKS LANDING
 CONDOMINIUMS - 16-UNIT
 CITY OF MADISON, WISCONSIN

Drawn: J.K.

Checked: SRS

Date: 10-13-00

Revisions:

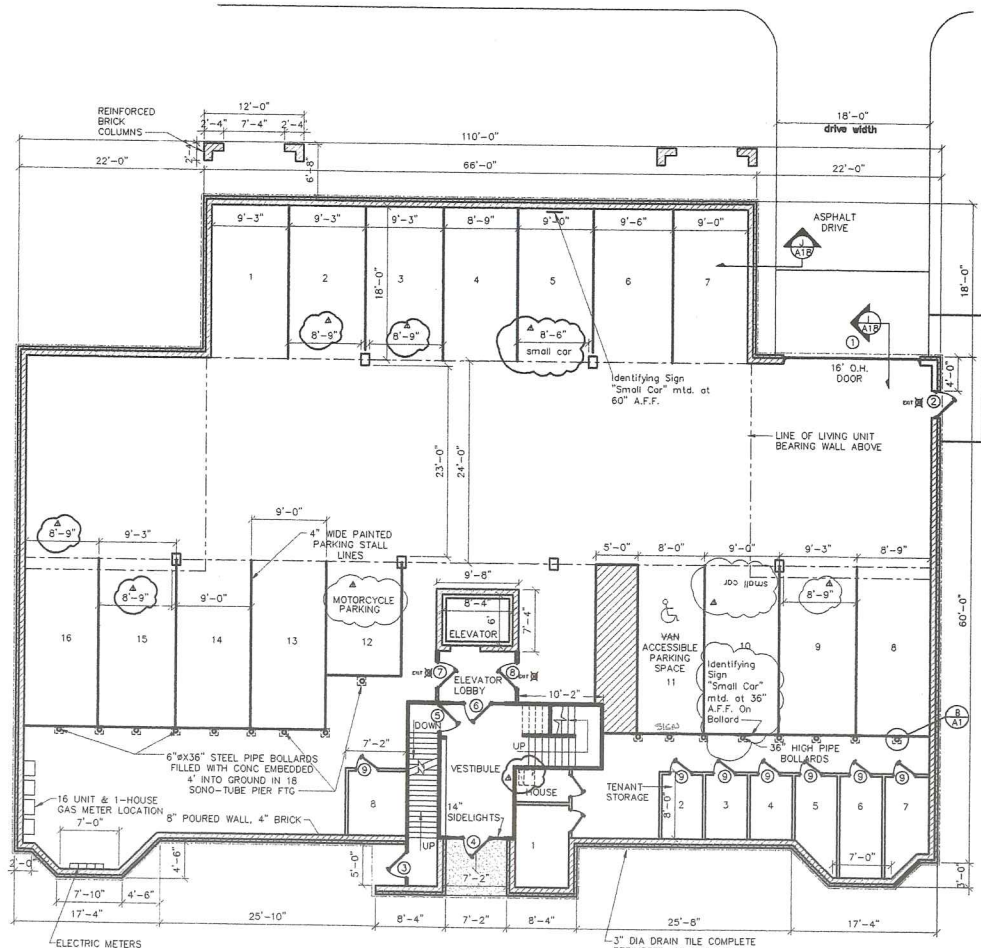
Project No.

0009096

Sheet No.

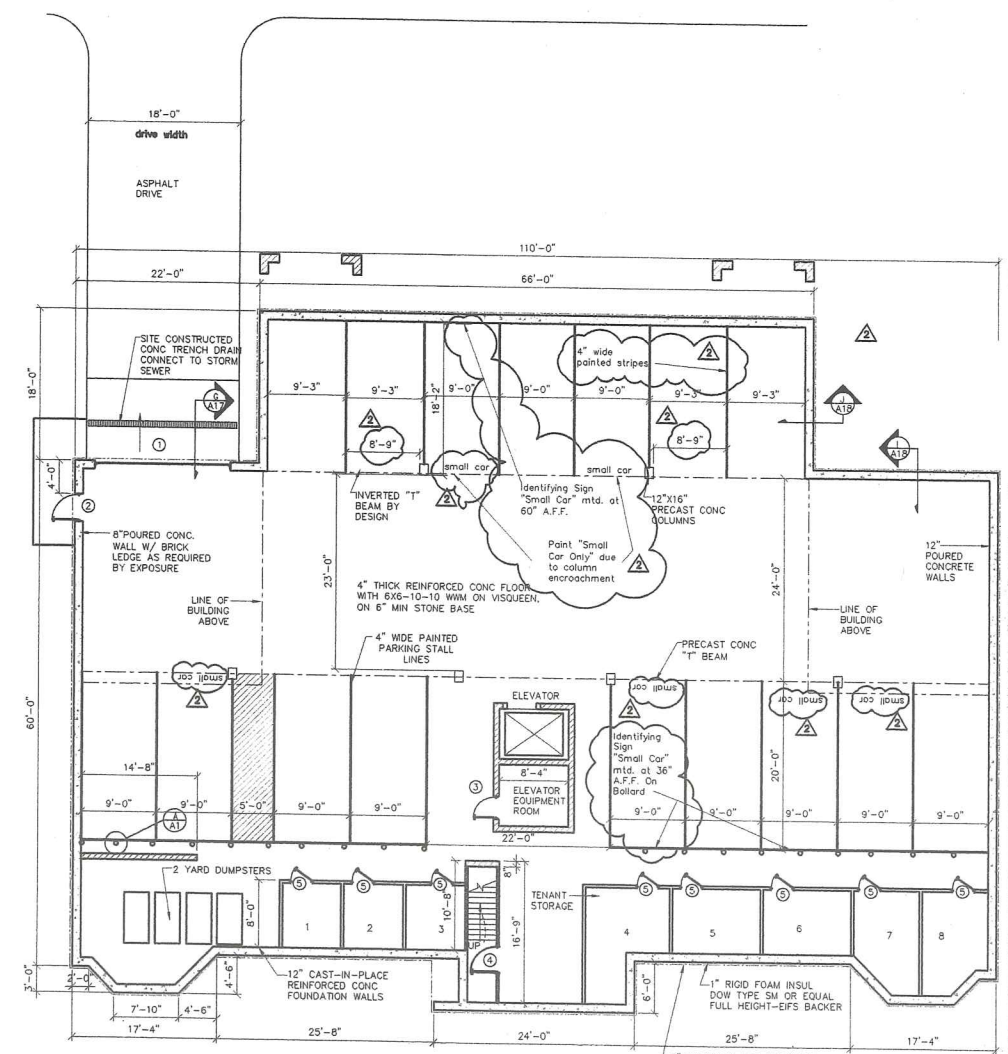
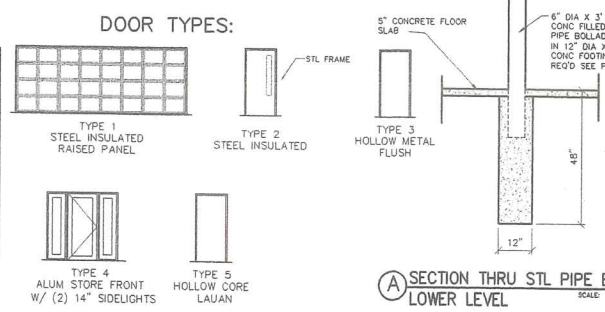
A13

Of 40 Sheets



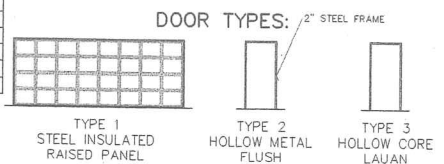
DOOR SCHEDULE				
SYM	SIZE	MATERIAL	TYPE	NOTES
1	16070	OH STL INSUL	1	W/ OPENER
2	3068x1-3/4"RH	STL INSUL	2	LOCKSET
3	3068x1-3/4"RH	STL INSUL	2	LOCKSET
4	3068x1-3/4"RH	ALUM	4	(2) 14" SIDELIGHTS
5	3068x1-3/4"RH	HM INSUL	3	
6	3068x1-3/4"RH	HM INSUL	3	
7	3068x1-3/4"RH	HM INSUL	3	CLOSER, B-LABEL
8	3068x1-3/4"RH	HM INSUL	3	CLOSER, B-LABEL
9	3068x1-3/8" LH	LAUAN	5	LOCKSET, B TYP

NOTE: TENANT STORAGE LOCKER DOORS CONSTRUCTED OF 2X4 CROSS-BUCK FRAME WITH 1/2" OSB SHEATHING TO HEIGHT OF 8' WITH WIRE MESH CEILING



DOOR SCHEDULE				
SYM	SIZE	MATERIAL	TYPE	NOTES
1	16070	OH STL INSUL	1	W/ OPENER
2	3068x1-3/4"RH	HM INSUL	2	LOCKSET
3	3068x1-3/4"RH	HM INSUL	2	LOCKSET
4	3068x1-3/4"RH	HM INSUL	2	B-LABEL W/ CLOSER
5	3068x1-3/4" LH	LAUAN	3	LOCKSET

NOTE: TENANT STORAGE LOCKER DOORS CONSTRUCTED OF 2X4 CROSS-BUCK FRAME WITH 1/2" OSB SHEATHING TO HEIGHT OF 8' WITH WIRE MESH CEILING



GORMAN COMPANY INC.
 REAL ESTATE DEVELOPMENT AND MANAGEMENT
 1244 S. PARK ST. MADISON, WI 53715
 (608)257-8778 direct; (608)257-9002 fax

"CROSSWINDS"
 AT HAWKS LANDING
 CONDOMINIUMS - 16-UNIT
 CITY OF MADISON, WISCONSIN

Drawn: JK
 Checked: SRS

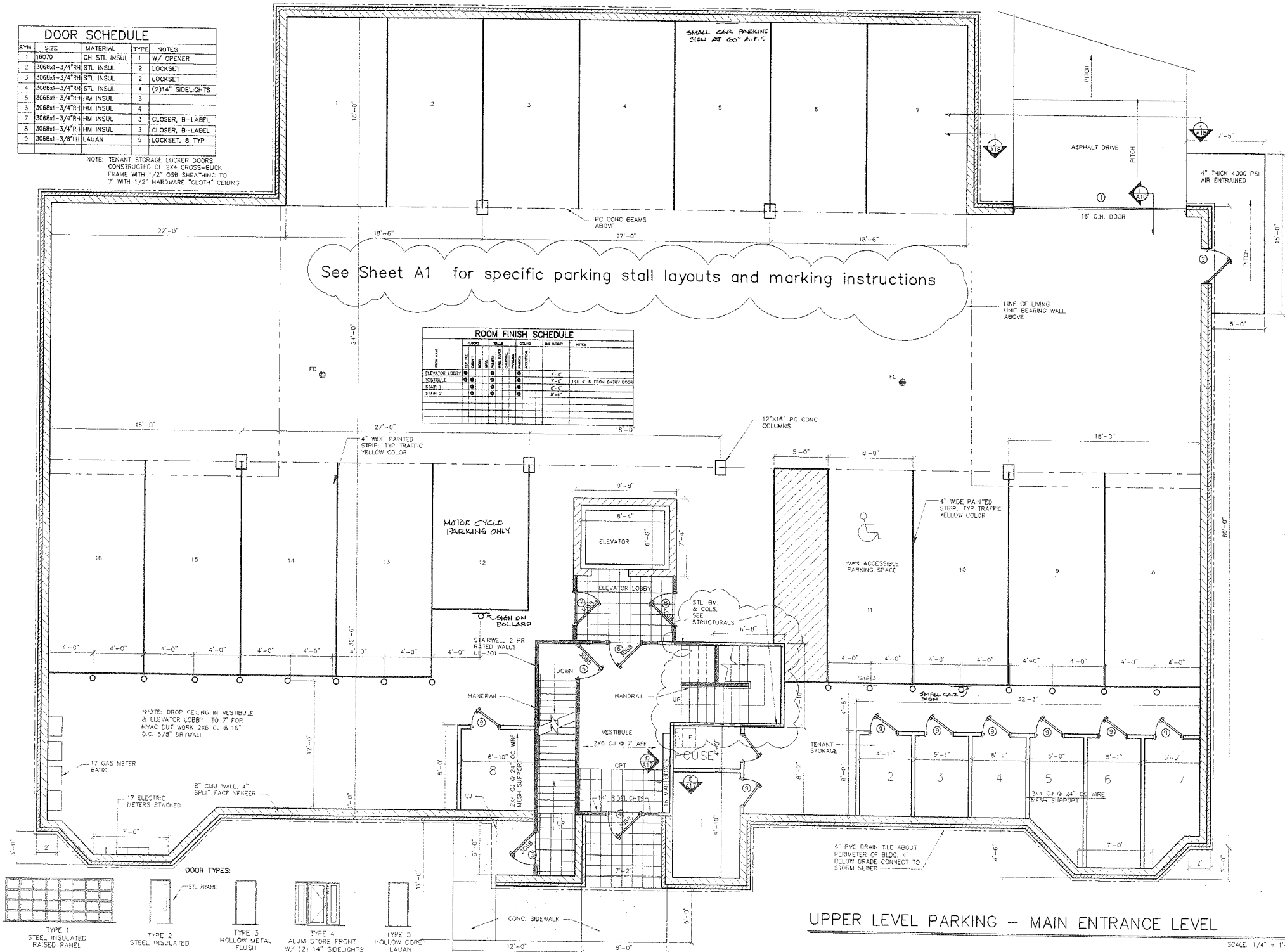
Date: 11-8-00

Revisions:
 2/12-05-00 parking, per city PARKING SIGNS

Project No. 0009096
 Sheet No. A1
 Of 4 Sheets

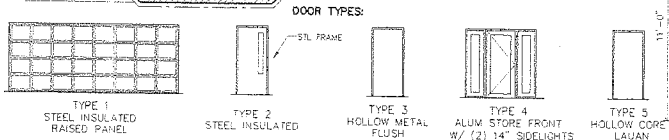
SYM	SIZE	MATERIAL	TYPE	NOTES
1	16070	OH STL INSUL	1	W/ OPENER
2	3068x1-3/4"RH	STL INSUL	2	LOCKSET
3	3068x1-3/4"RH	STL INSUL	2	LOCKSET
4	3068x1-3/4"RH	STL INSUL	4	(2)14" SIDELIGHTS
5	3068x1-3/4"RH	HM INSUL	3	
6	3068x1-3/4"RH	HM INSUL	4	
7	3068x1-3/4"RH	HM INSUL	3	CLOSER, B-LABEL
8	3068x1-3/4"RH	HM INSUL	3	CLOSER, B-LABEL
9	3068x1-3/8" LH	LAUAN	5	LOCKSET, 6 TYP

NOTE: TENANT STORAGE LOCKER DOORS
CONSTRUCTED OF 2X4 CROSS-BUCK
FRAME WITH 1/2" OSB SHEATHING TO
7" WITH 1/2" HARDWARE "CLOTH" CEILING



See Sheet A1 for specific parking stall layouts and marking instructions

ROOM	FLOOR	WALL	CEILING	FINISH	NOTES
ELEVATOR LOBBY	1	1	1	1	7'-0"
VESTIBULE	1	1	1	1	7'-0" TILE 4" IN FROM ENTRY DOOR
STAIR 1	1	1	1	1	8'-0"
STAIR 2	1	1	1	1	8'-0"



UPPER LEVEL PARKING -- MAIN ENTRANCE LEVEL

SCALE: 1/4" = 1'-0"

GORMAN
COMPANY, INC.
REAL ESTATE DEVELOPMENT AND MANAGEMENT
1244 S. PARK ST. MADISON, WI 53715
(608)257-8778 Direct (608)257-4410 Ext. 310 Fax: (608)257-9002

"CROSSWINDS"
AT HAWKS LANDING
CONDOMINIUMS - 16-UNIT
CITY OF MADISON, WISCONSIN

Drawn: J.K.

Checked: S.R.S.

Date: 11-8-00

Revisions:

Project No.

0009096

Sheet No.

A3
Of 42 Sheets

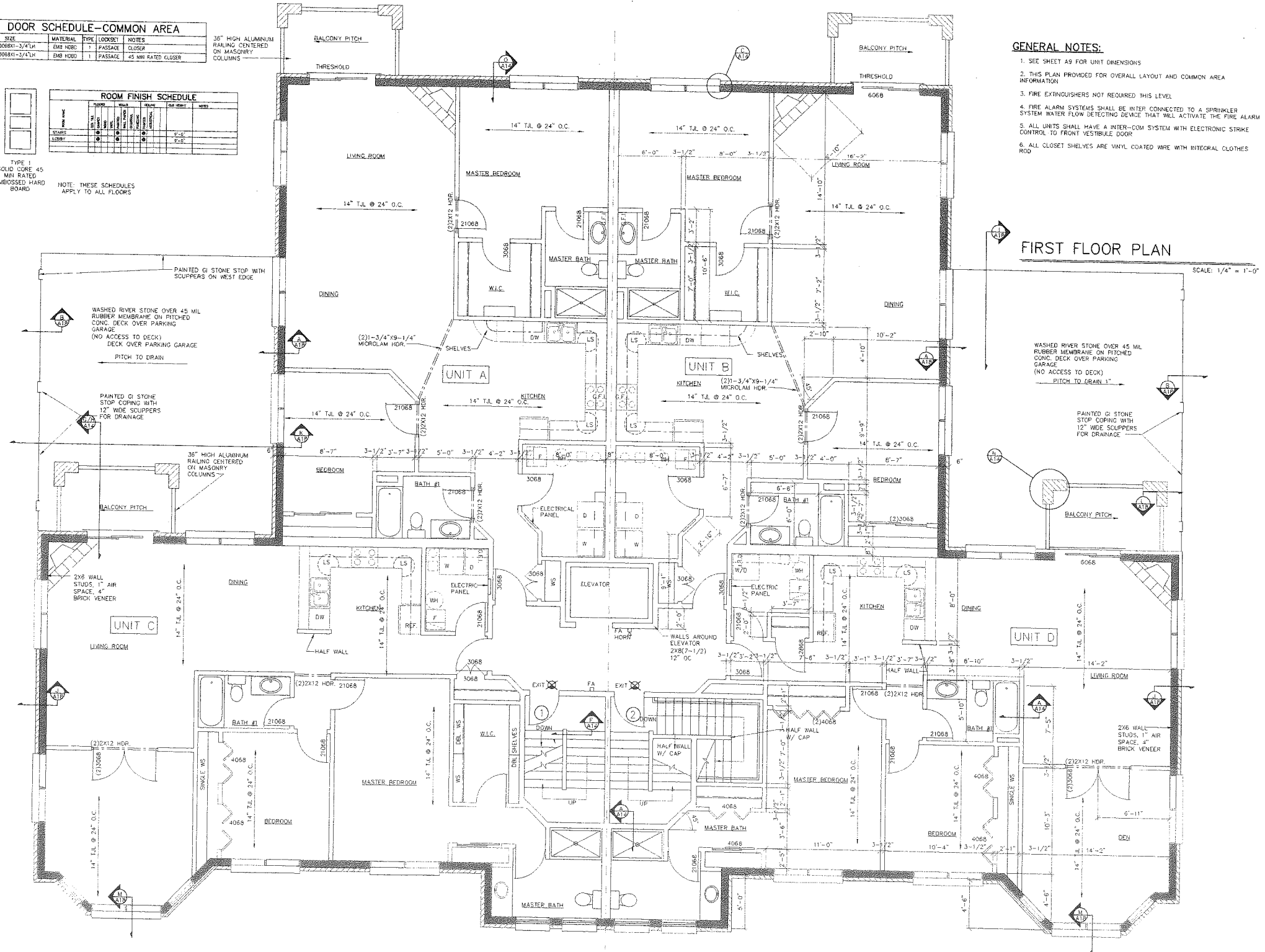
DOOR SCHEDULE--COMMON AREA					
SYM	SIZE	MATERIAL	TYPE	LOOKS	NOTES
1	3068K1-3/4" LK	EMB HDBD	1	PASSAGE	CLOSER
2	3068K1-3/4" LK	EMB HDBD	1	PASSAGE	45 MIN RATED CLOSER

36" HIGH ALUMINUM RAILING CENTERED ON MASONRY COLUMNS

ROOM FINISH SCHEDULE					
ROOM	FLOOR	WALLS	CEILING	DOOR	NOTES
STAIRS	1	1	1	1	1
LOBBY	1	1	1	1	1

NOTE: THESE SCHEDULES APPLY TO ALL FLOORS

TYPE 1
SOLID CORE 45
MIN RATED
EMBOSSED HARD
BOARD



GENERAL NOTES:

- SEE SHEET A9 FOR UNIT DIMENSIONS
- THIS PLAN PROVIDED FOR OVERALL LAYOUT AND COMMON AREA INFORMATION
- FIRE EXTINGUISHERS NOT REQUIRED THIS LEVEL
- FIRE ALARM SYSTEMS SHALL BE INTER CONNECTED TO A SPRINKLER SYSTEM WATER FLOW DETECTING DEVICE THAT WILL ACTIVATE THE FIRE ALARM
- ALL UNITS SHALL HAVE AN INTER-COM SYSTEM WITH ELECTRONIC STRIKE CONTROL TO FRONT VESTIBULE DOOR
- ALL CLOSET SHELVES ARE VINYL COATED WIRE WITH INTEGRAL CLOTHES ROD

FIRST FLOOR PLAN

SCALE: 1/4" = 1'-0"

GORMAN
COMPANY, INC.
REAL ESTATE DEVELOPMENT AND MANAGEMENT
1244 S. PARK ST. MADISON, WI 53715
(608)257-8778 direct (608)957-4410 Ext. 330 fax: (608)257-9002

"CROSSWINDS"
AT HAWKS LANDING
CONDOMINIUMS - 16-UNIT
CITY OF MADISON, WISCONSIN

Drawn: JK

Checked: SRS

Date: 10-13-00

Revisions:

Project No.

0009096

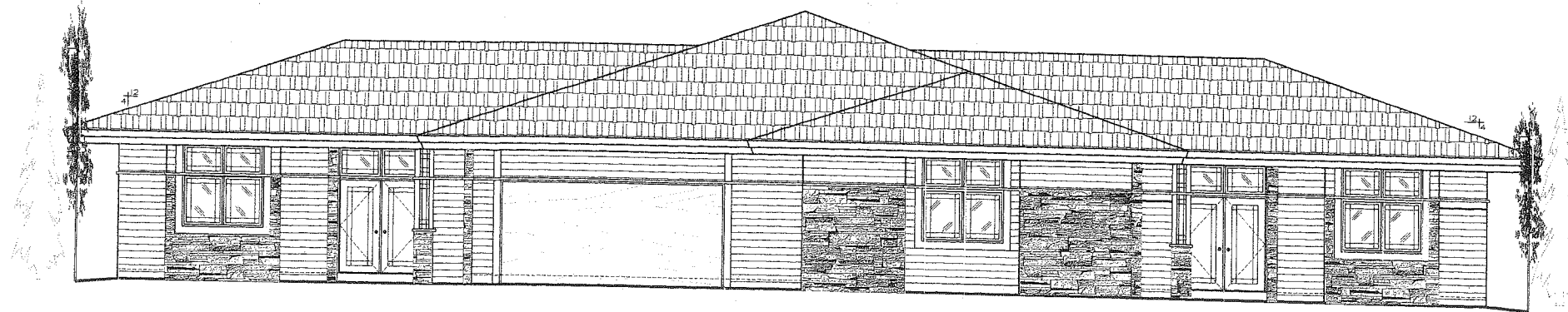
Sheet No.

A4
Of 40 Sheets

CROSSWINDS CONDOMINIUMS

AT HAWK'S LANDING

MIDTOWN ROAD AT HAWK'S LANDING CIRCLE, MADISON, WISCONSIN



FRONT ELEVATION

SCALE: 1/8" = 1'-0"



REAR ELEVATION - WALK-OUT BUILDING

SCALE: 1/4" = 1'-0"

C:\projects\1999\9911063A\1.dwg Thu Apr 20 13:07:02 2000

GORMAN
CONSTRUCTION

REAL ESTATE DEVELOPMENT AND MANAGEMENT
 1244 S. PARK ST. MADISON, WI 53715
 (608)251-8770 direct (608)251-4410 Ext. 310 fax: (608)251-9002

"CROSSWINDS"
 AT HAWK'S LANDING
 CONDOMINIUMS - DUPLX
 CITY OF MADISON, WISC.

Drawn: DMD

Checked: SRS

TITLE
 PAGE

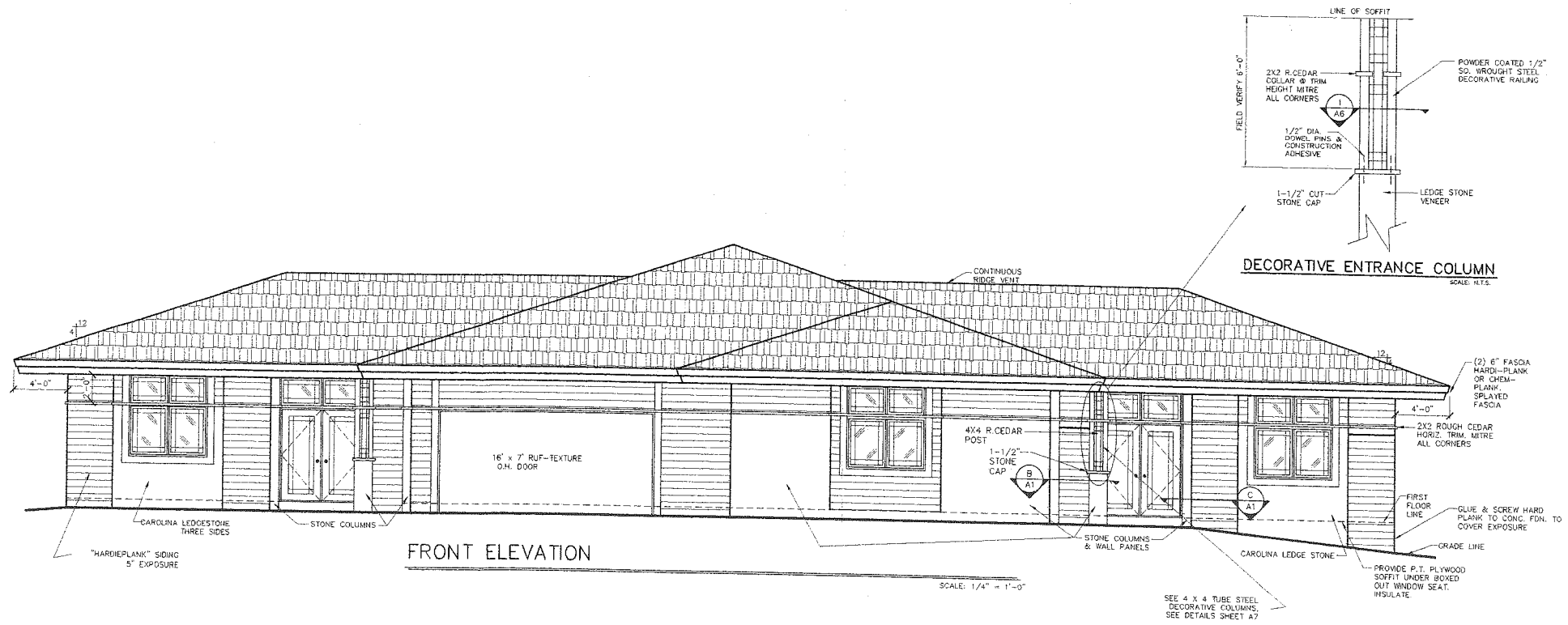
Date: 2-25-00

Revisions:	
01	SIDING &
02	ROOF HEIGHT
03	MISC. PLAN CHANGES
04	MISC. PLAN CHANGES

Project No.
 9911063A

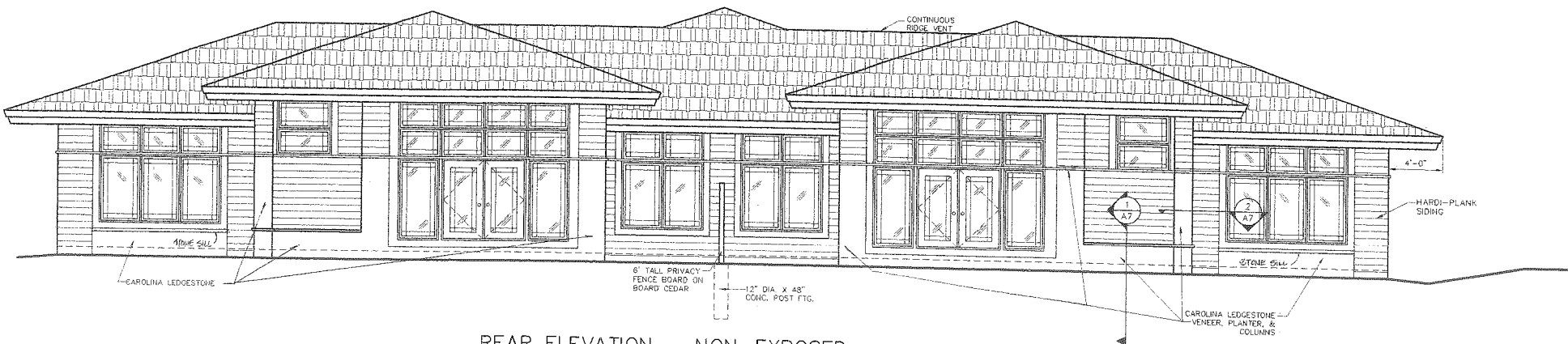
Sheet No.

T I
 of 20 sheets



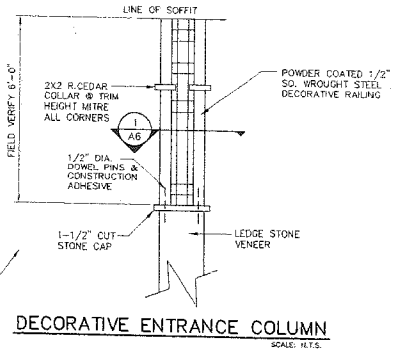
FRONT ELEVATION

SCALE: 1/4" = 1'-0"



REAR ELEVATION - NON-EXPOSED

SCALE: 1/4" = 1'-0"



DECORATIVE ENTRANCE COLUMN

SCALE: N.T.S.

GORMAN & COMPANY, INC.
 REAL ESTATE DEVELOPMENT AND MANAGEMENT
 1244 S. PARK ST. MADISON, WI 53715
 (608)257-8778 direct (608)257-4410 Ext. 310 fax (608)257-9002

"CROSSWINDS"
 AT HAWKS LANDING
 CONDOMINIUMS - DUPLEX
 CITY OF MADISON, WISCONSIN

Drawn: DMD

Checked: SRS

FRONT &
 REAR
 ELEVATIONS

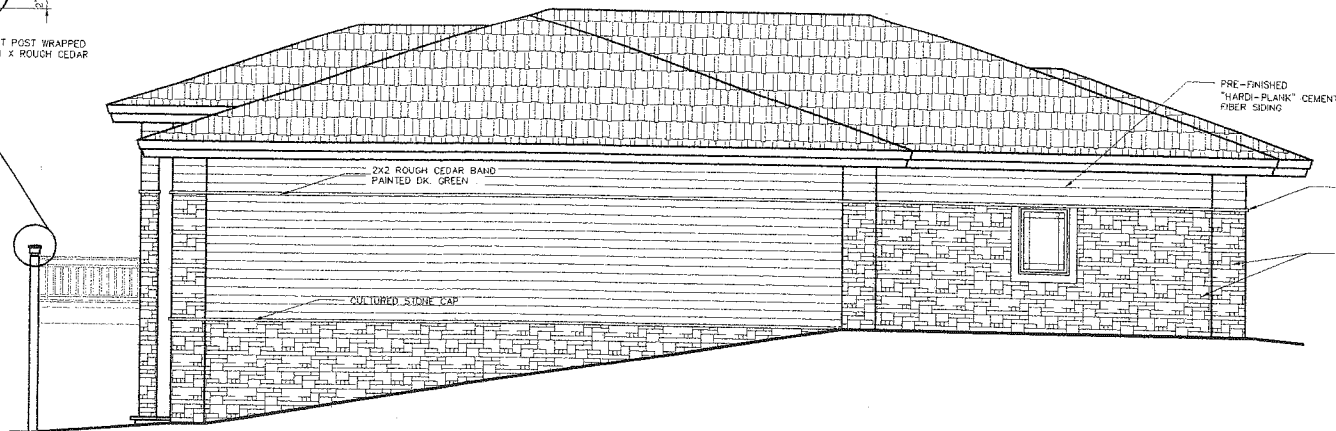
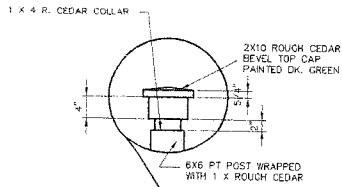
Date: 2-25-00

Revisions:	
01	SIDING & ROOF HEIGHT
02	MISC. NOTES

Project No.
 9911063A

Sheet No.

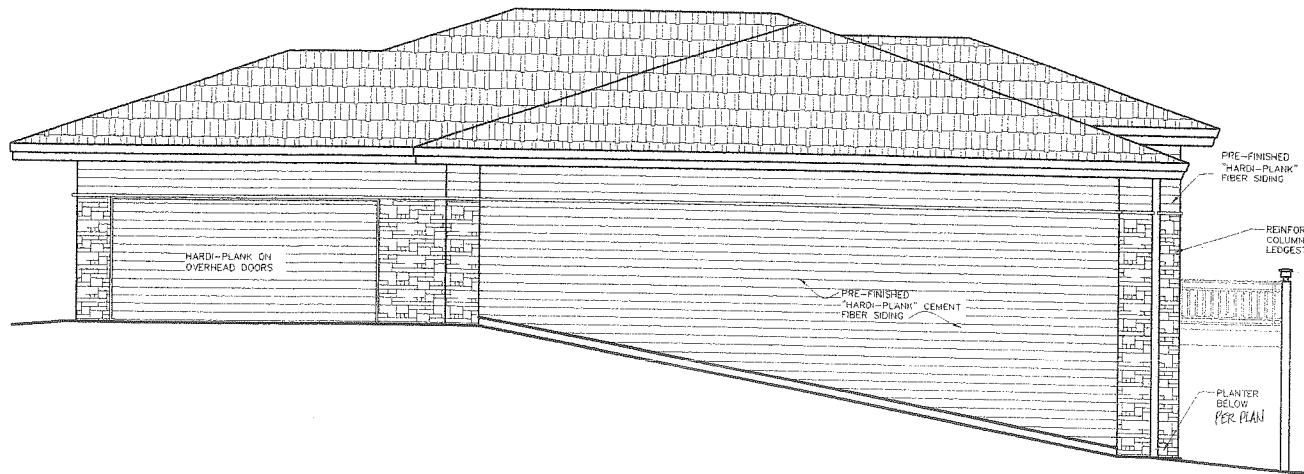
A6
 Of 20 Sheets



* SEE ROOF PLAN FOR GUTTER LOCATIONS

LEFT SIDE ELEVATION

SCALE: 1/4" = 1'-0"



RIGHT SIDE ELEVATION

SCALE: 1/4" = 1'-0"

GORMAN
 & COMPANY, INC.
 REAL ESTATE DEVELOPMENT AND MANAGEMENT
 1244 S. PARK ST. MADISON, WI 53715
 direct: (608)257-4410 Ext. 310 fax: (608)257-9002

"CROSSWINDS"
 AT HAWKS LANDING
 CONDOMINIUMS - DUPLEX
 CITY OF MADISON, WI

Drawn: DMD

Checked: SRS

LEFT &
 RIGHT
 ELEVATIONS

Date: 2-25-00

Revisions:
1. SIDING & ROOF HEIGHT

Project No.
 9911063A

Sheet No.

A8
 Of 20 Sheets

