

EXHIBIT A

PUBLIC SIDEWALK EASEMENT EXHIBIT

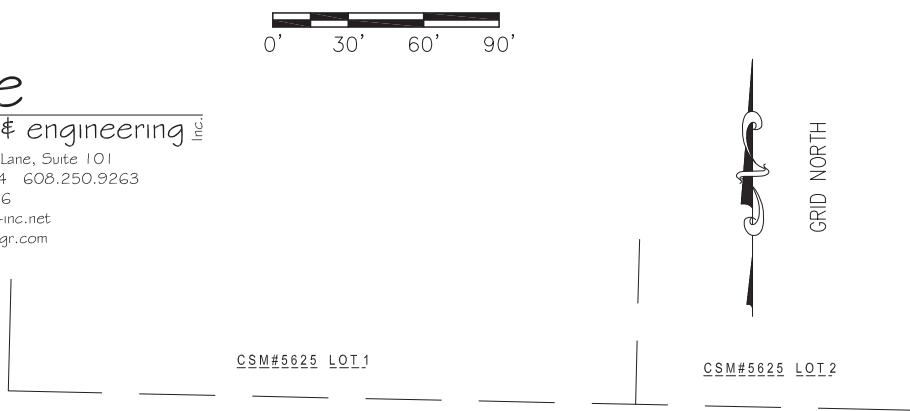
Part of Block 13, University Addition to Madison, as recorded in Volume A of Plats, on page 9, Document No. 109, Dane County Registry, located in the Northeast Quarter of the Northwest Quarter of Section 23, Township 07 North, Range 09 East, City of Madison, Dane County, Wisconsin.

Prepared By:

Burse

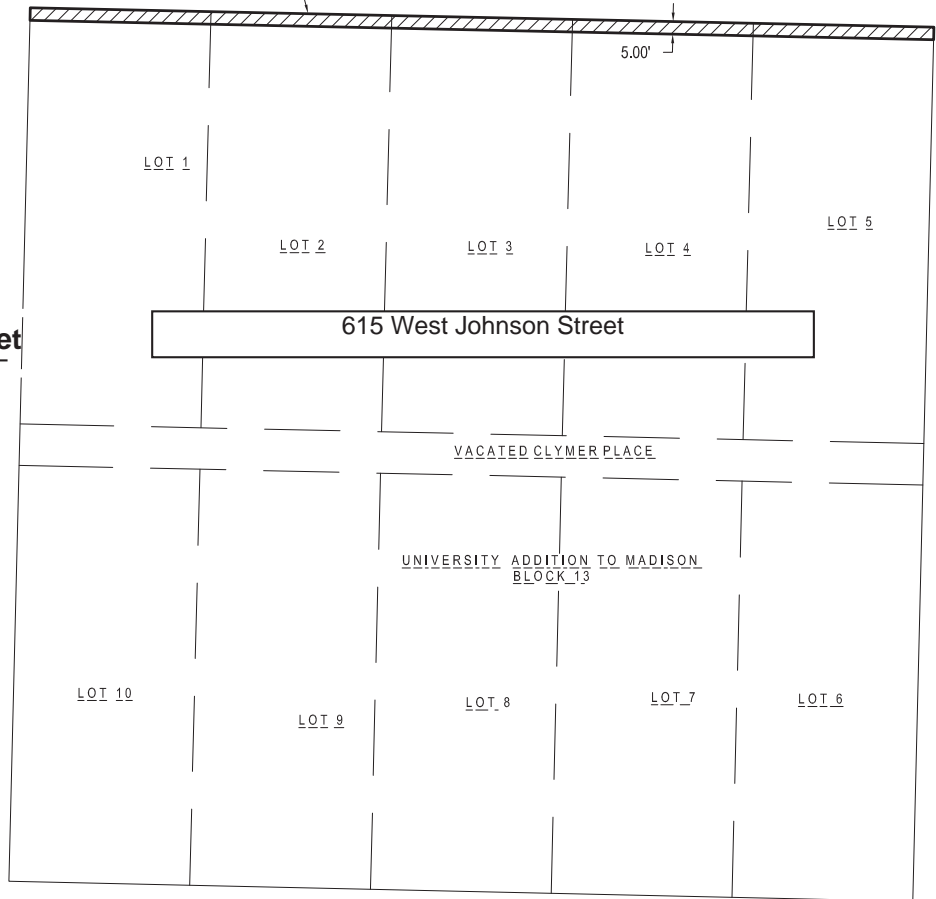
surveying & engineering inc.

2801 International Lane, Suite 101
Madison, WI 53704 608.250.9263
Fax: 608.250.9266
email: mburse@bse-inc.net
www.bursesurveyengr.com



WEST JOHNSON STREET

5.00' Easement Area



WEST DAYTON STREET