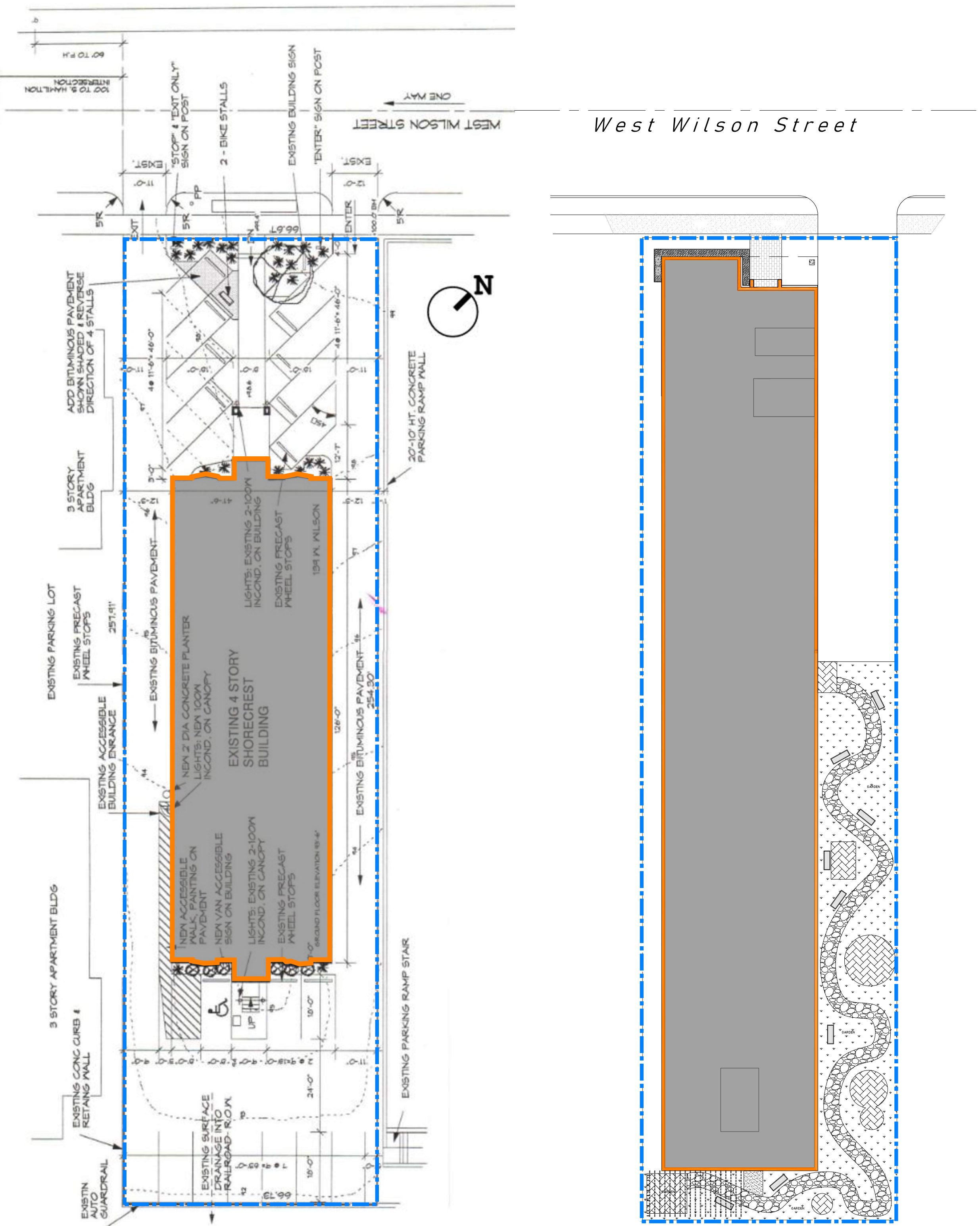




1 LOCATION MAP
See graphic scale



2 EXISTING SITE PLAN
Scale: 1" = 20'

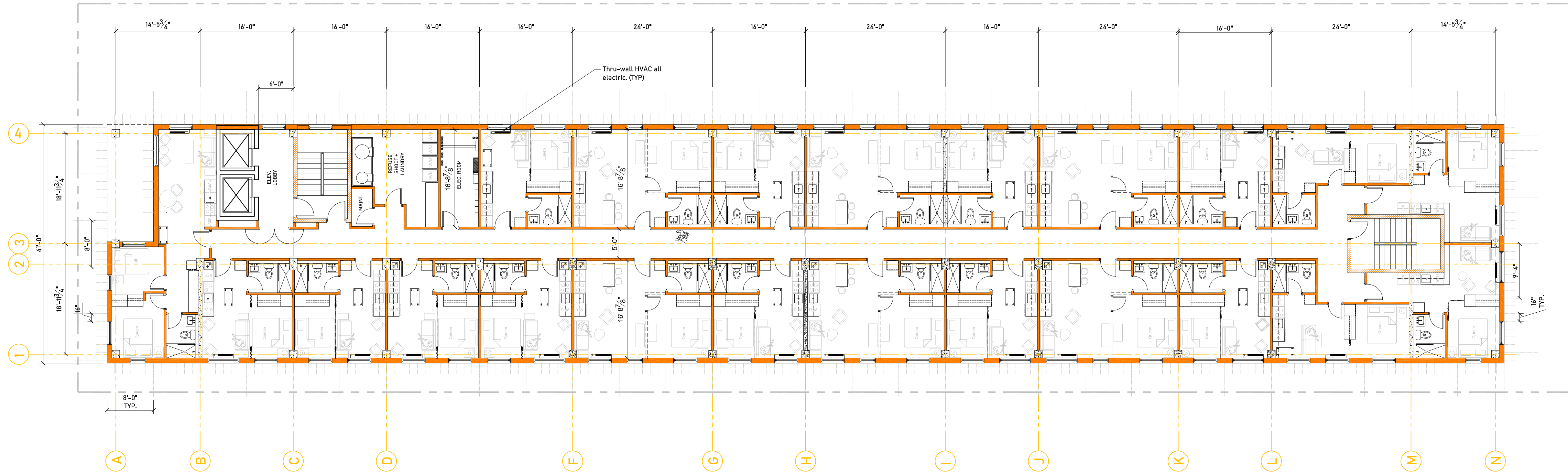
3 PROPOSED SITE PLAN
Scale: 1" = 20'

progression
139 West Wilson
Madison, Wisconsin
PROJECT SITE

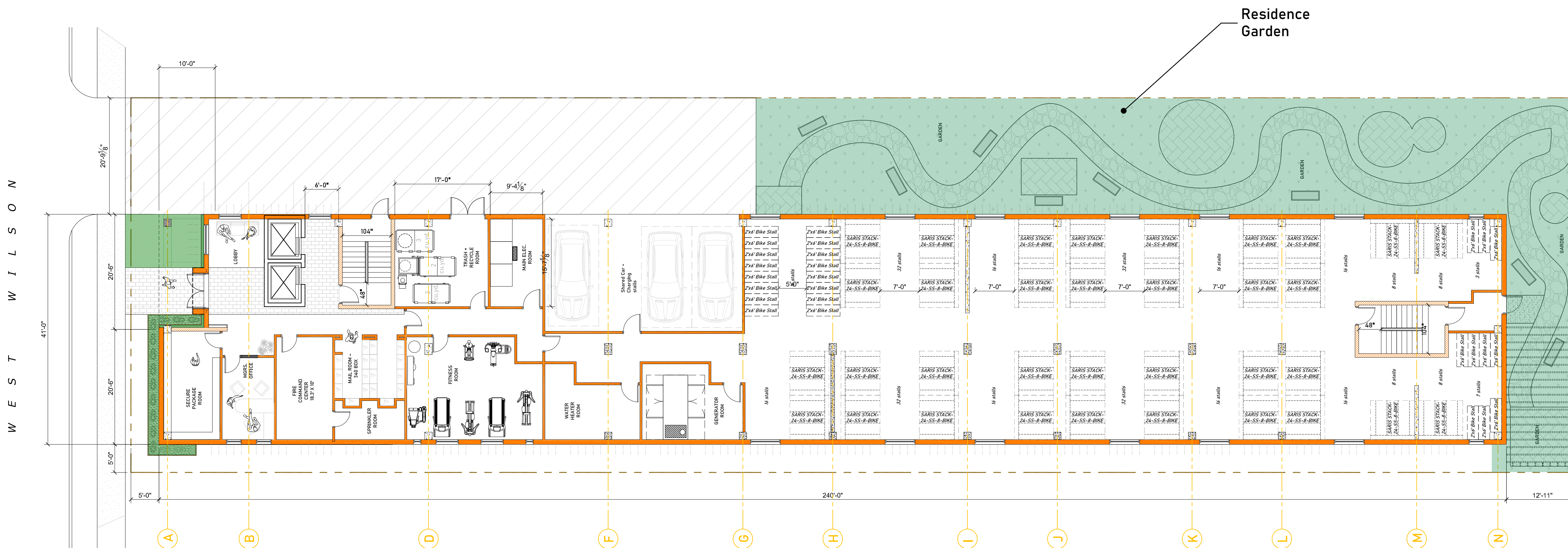
Revisions:	

Project #:
Issued For: Review
Date: 02/21/2022

A0.0

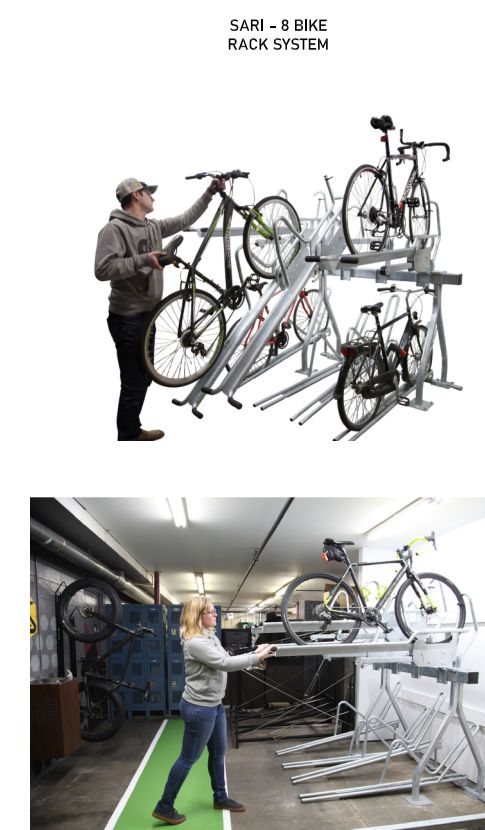


2 FLOORS 2 and 4
Scale: 3/32" = 1'-0"



1 GROUND FLOOR
Scale: 3/32" = 1'-0"

OPEN SPACE:
3,350 SF REQUIRED
3,623 SF SHOWN



SARI 8-BIKE RACK SYSTEM = 8 Bikes

BIKE STALL COUNTS:
335 UNITS X 1/UNIT = 335 STALLS.
25% TO BE RACKING (84 STALLS). 1 GUEST SPACE PER 10 UNITS. (34 STALLS).
TOTAL PER MGO = 376 STALLS.

298 SHOWN.
PETITION ZONING ADMINISTRATOR FOR REDUCTION AND USE OF SARI SS - 24 - 8 Bike STACK SOLUTIONS.

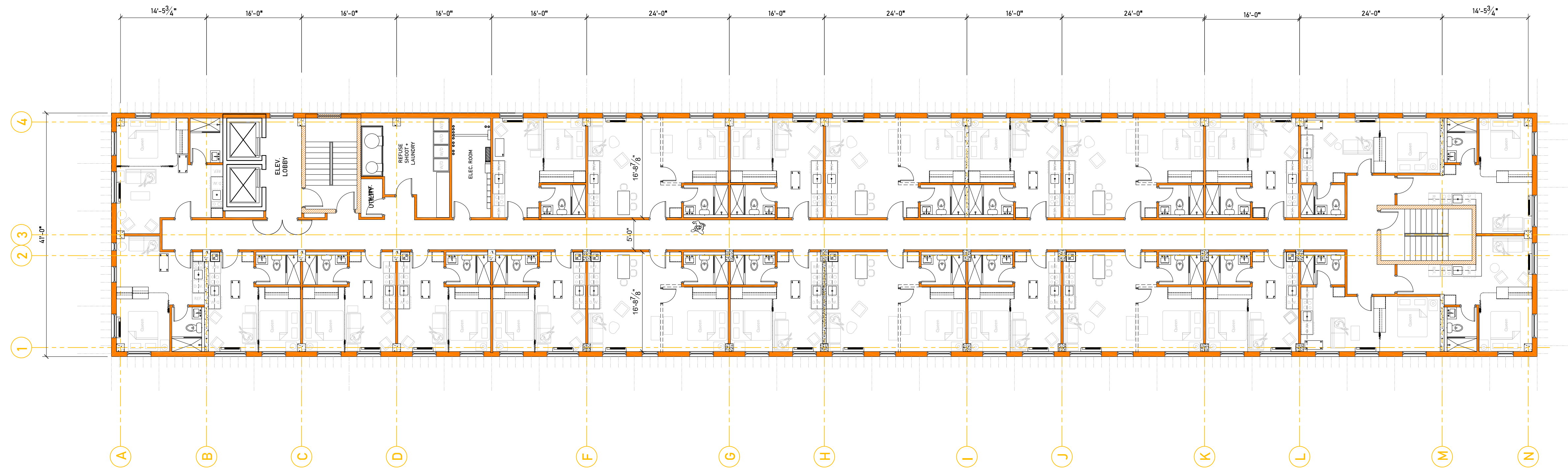
LOT COVERAGE:
MAX 85%
LOT AREA = -17,218 SF REQUIRED
MAX IMPERVIOUS = 85% = 14,635.3 SF
IMPERVIOUS SHOWN = 12,197 SF = 70% LOT COVERAGE

progression
139 West Wilson
Madison, Wisconsin
PLANS

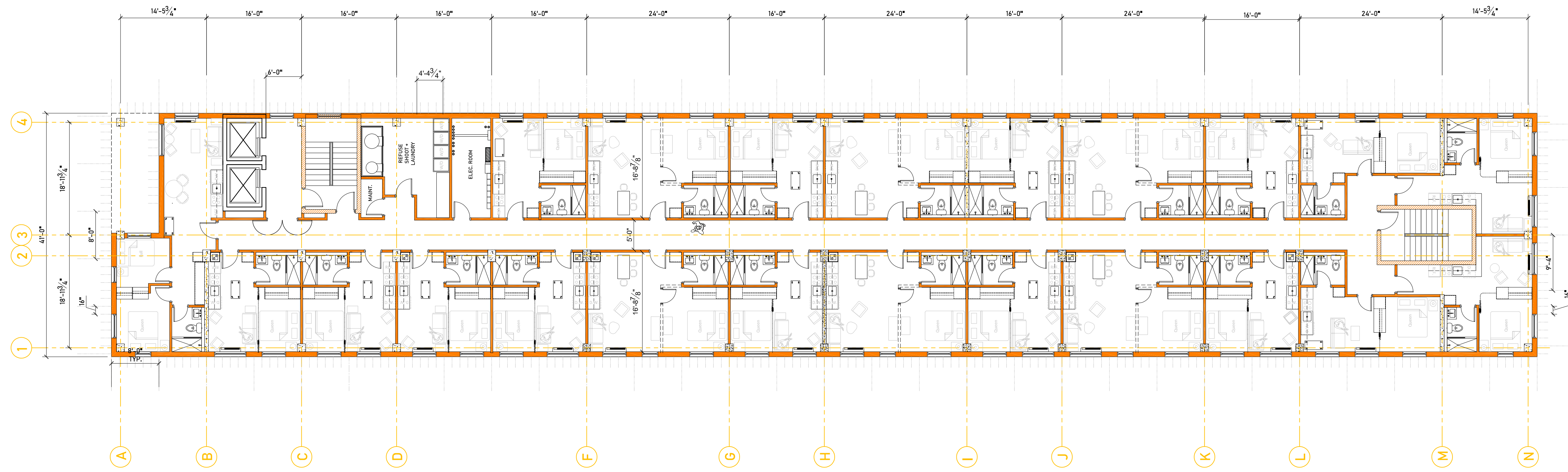
Revisions:	

Project #:
Issued For: Review
Date: 02/21/2022

A1.0



2 EVEN NUMBERED FLOORS 6-14
Scale: 3/32" = 1'-0"



1 FLOORS 3 and 5
Scale: 3/32" = 1'-0"

progression

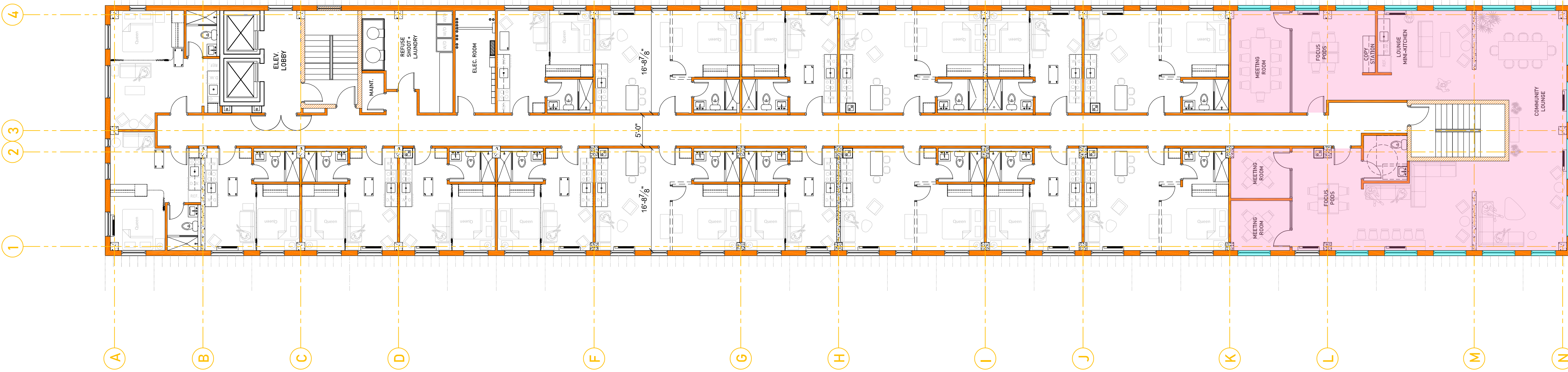
139 West Wilson
Madison, Wisconsin

PLANS

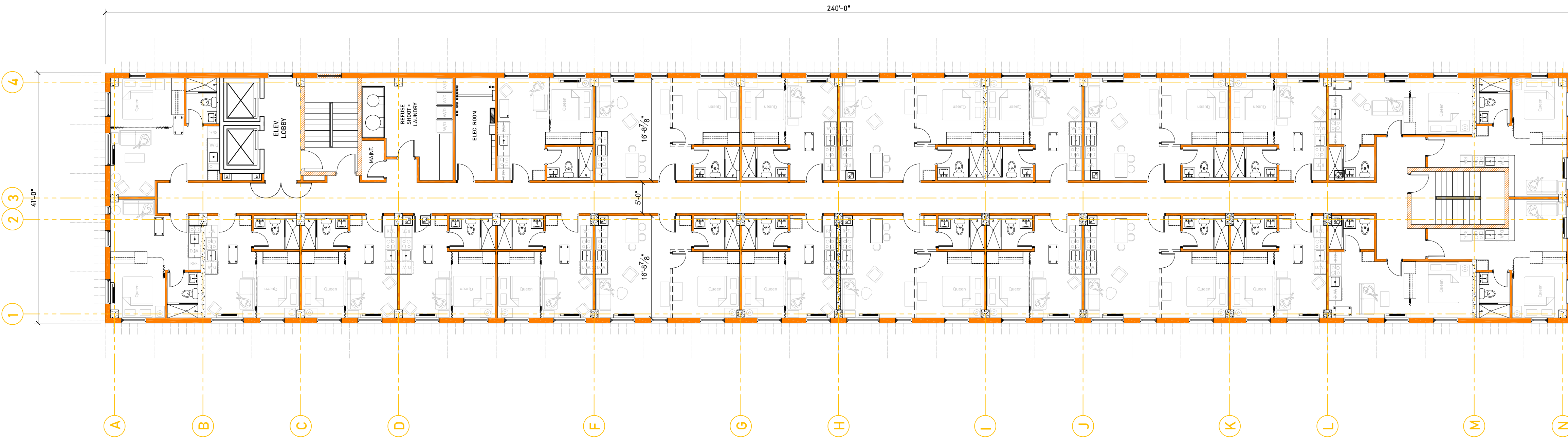
Revisions:	

Project #: Review
Issued For: Date
Date: 02/21/2022

A1.1



2 FLOOR 16
Scale: 3/32" = 1'-0"



1 ODD NUMBERED FLOORS 7-15
Scale: 3/32" = 1'-0"

progression
139 West Wilson
Madison, Wisconsin
PLANS

Revisions:

Project #: Review
Issued For: Date
Date: 02/21/2022

A1.2



RECESSED ART FAÇADE:

- 52 feet tall, and is L-shaped (8' x 20') wide
- The art images would be color jet printed on 4' x 10' dibond composite panels
- Mounted behind lit translucent dual wall poly carbonate panels
- The installation would be interchangeable on periodic basis by soliciting emerging Wisconsin artists

FLOOR 1
Assumed ELEV.
@ SIDEWALK = 869.0'



1 NORTH ELEVATION
Scale: 3/32" = 1'-0"

2 NORTH ELEVATION
Scale: 1/4" = 1'-0"

progression

139 West Wilson
Madison, Wisconsin

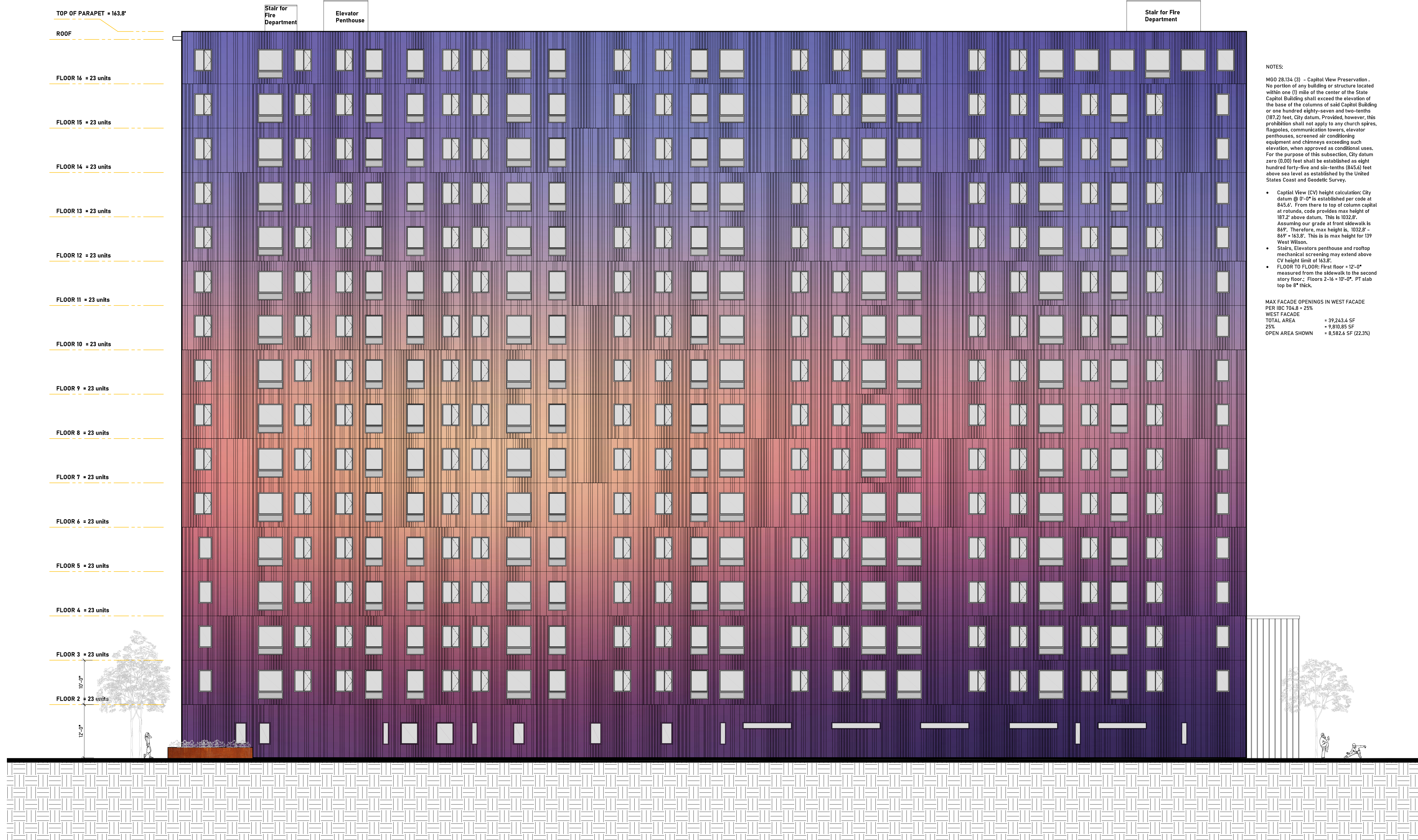
Elevation

Revisions:

NO.	DESCRIPTION

Project #:
Issued For: Review
Date: 02/21/2022

A2.0



NOTES:

MGO 28.134 (3) - Capitol View Preservation. No portion of any building or structure located within one (1) mile of the center of the State Capitol Building shall exceed the elevation of the base of the columns of said Capitol Building or one hundred eighty-seven and two-tenths (187.2) feet, City datum. Provided, however, this prohibition shall not apply to any church spires, flagpoles, communication towers, elevator penthouses, screened air conditioning equipment and chimneys exceeding such elevation, when approved as conditional uses. For the purpose of this subsection, City datum zero (0.00) feet shall be established as eight hundred forty-five and six-tenths (845.6) feet above sea level as established by the United States Coast and Geodetic Survey.

- Capitol View (CV) height calculation: City datum @ 0'-0" is established per code at 845.6'. From there to top of column capital at rotunda, code provides max height of 187.2' above datum. This is 1032.8'. Assuming our grade at front sidewalk is 849'. Therefore, max height is: 1032.8' - 849' = 163.8'. This is max height for 139 West Wilson.
- Stairs: Elevators penthouse and rooftop mechanical screening may extend above CV height limit of 163.8'.
- FLOOR TO FLOOR: First floor = 12'-0" measured from the sidewalk to the second story floor.; Floors 2-16 = 10'-0". PT slab top be 8" thick.

MAX FACADE OPENINGS IN WEST FACADE PER IBC 704.8 + 25%

WEST FACADE	= 39,343.4 SF
TOTAL AREA	= 9,810.85 SF
25%	= 2,452.71 SF
OPEN AREA SHOWN	= 8,582.6 SF (22.3%)

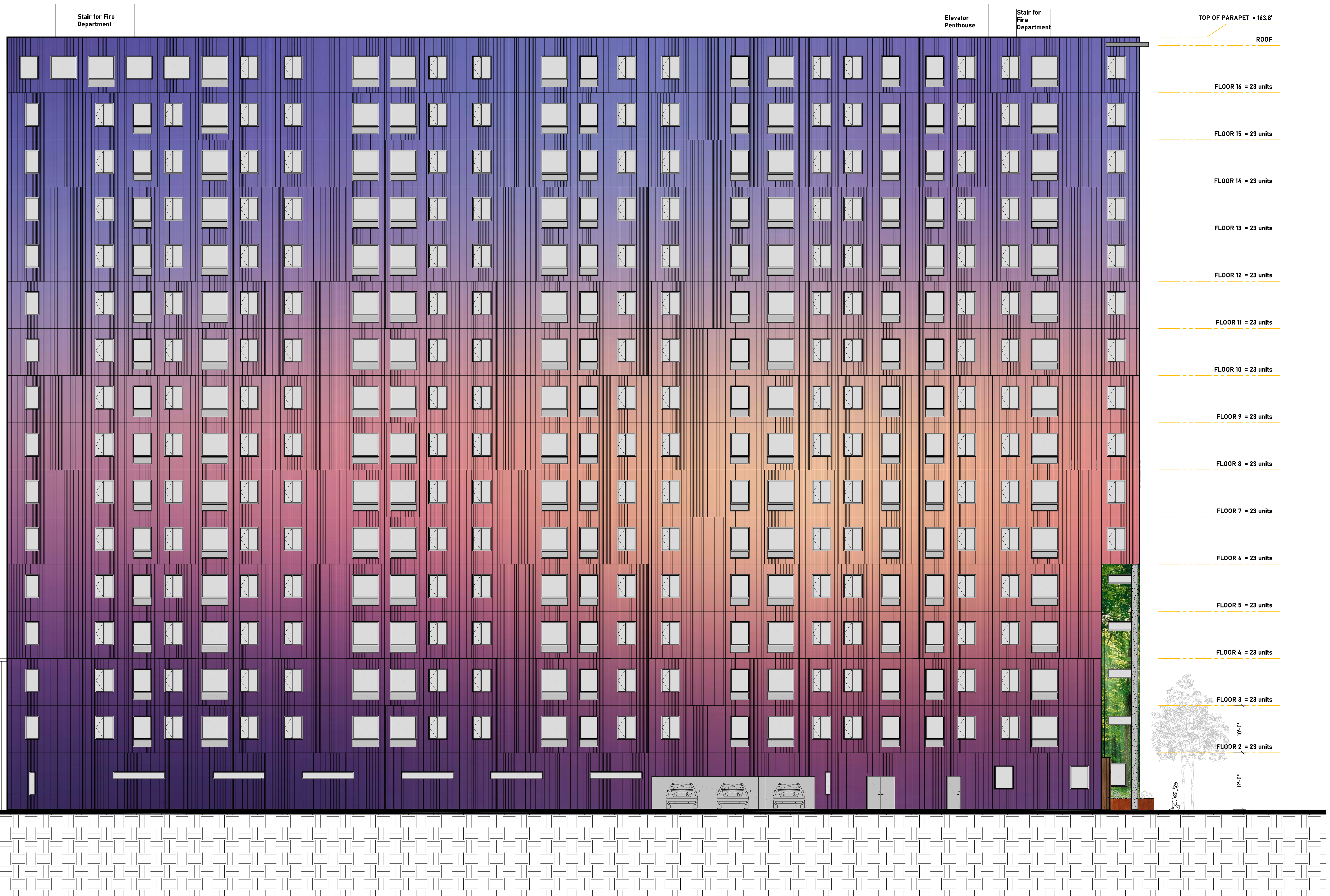
1 WEST ELEVATION
Scale: 3/32" = 1'-0"

progression
139 West Wilson
Madison, Wisconsin
Elevation

Revisions:

Project #: Review
Issued For: Date
Date: 02/21/2022

A2.1



1 EAST ELEVATION
Scale: 3/32" = 1'-0"

Revisions:

Project #:
Issued For: Review
Date: 02/21/2022

A2.2



1 SOUTH ELEVATION
Scale: 3/32" = 1'-0"



2 PARTIAL EAST ELEVATION at ENTRY
Scale: 1/4" = 1'-0"



ENTRY FACADE WALLS:
CUSTOM ART WALL TO HAVE ARTWORK IMAGE WITHIN
CLIPPED POLYCARBONATE PANEL ASSEMBLY
ILLUMINATED WITH LED WASH FIXTURES INSIDE
WALL ASSEMBLY.

RECESSED ART FAÇADE:

- 52 feet tall, and is L-shaped (8' x 20') wide
- The art images would be color jet printed on 4' x 10' dibond composite panels
- Mounted behind lit translucent dual wall poly carbonate panels
- The installation would be interchangeable on periodic basis by soliciting emerging Wisconsin artists

progression

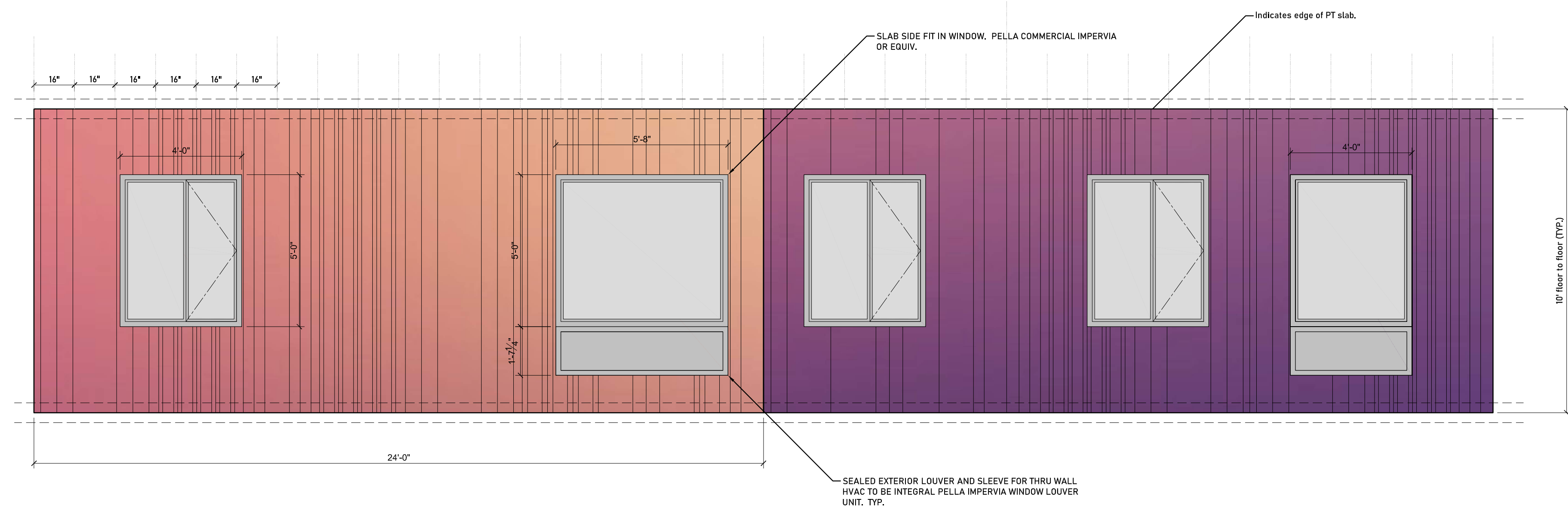
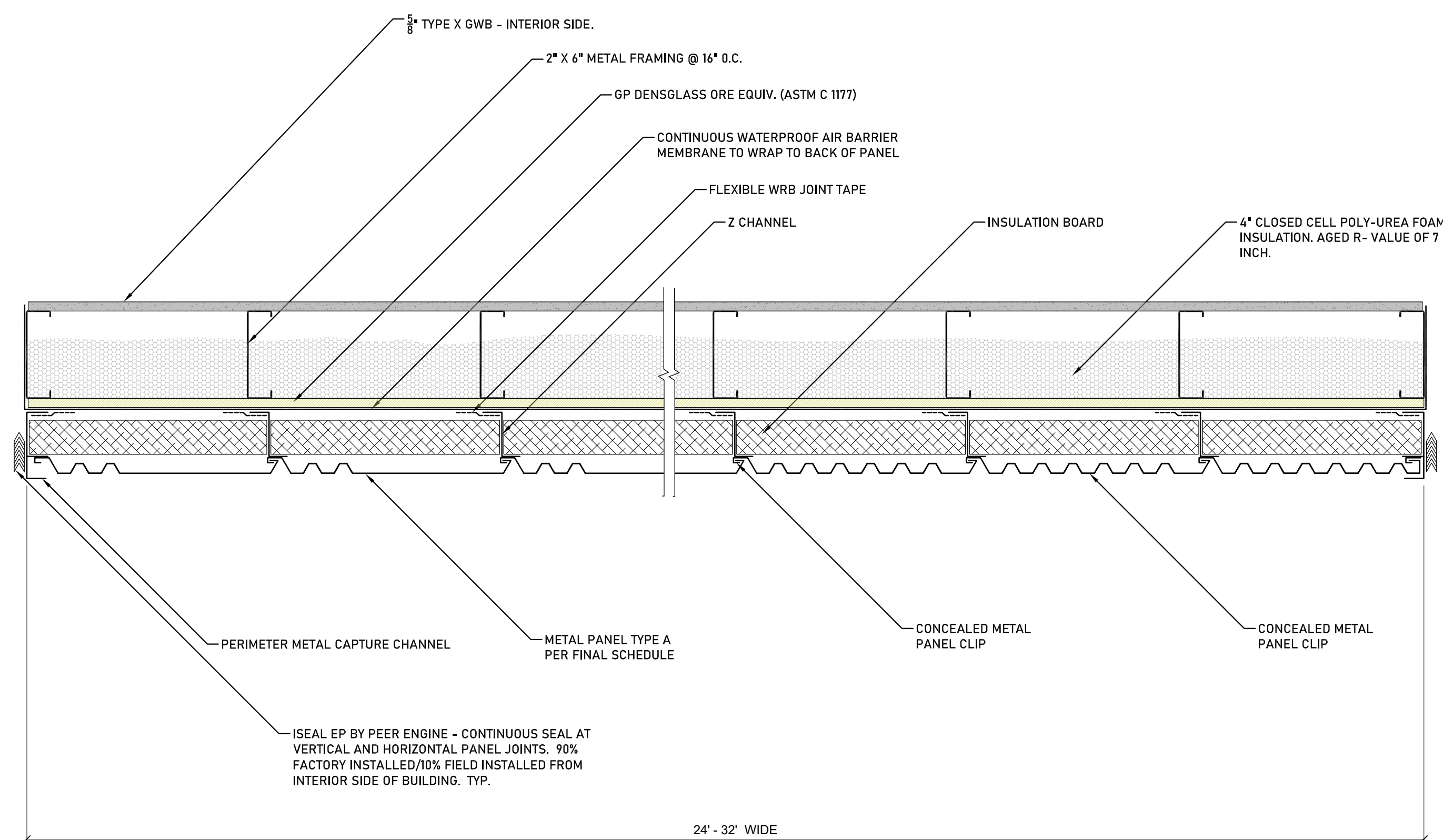
139 West Wilson
Madison, Wisconsin

Elevation

Revisions:	

Project #: Review
Issued For: Date: 02/21/2022

A2.3



- NOTES:**
- 1.) Wall panels design to eliminate the need for swing stage.
 - 2.) Design intent is for 2 primary panel sizes.
 - 3.) Panels to concealed fastener metal panels(MP) in 3 profiles. All MP profiles to run vertically and be 16" wide.
 - 5.) Wall panels to include: Windows and integrated HVAC unit louver where it occurs.
 - 6.) Final panel design will utilize a matrix schedule keyed to elevation showing all panels; windows and materials in final assembly.
 - 7.) Metal panel (MP) finish colors: MP to be finished in (3) colors of PPG Duranar Vari-cool color changing finish.

OPTION A DESIGN INTENT:
 MAXIMIZE VARIATION AND DYNAMIC CHANGE OF TEXTURE,
 PATTERNING AND COLOR BASED ON DAY, DATE, CLOUD
 COVER AND VIEW ANGLE.
 USE OF COLOR SHIFTING PAINT AND WALL PANELS TO HAVE
 3 PROFILES OF CONCEALED FASTENER METAL PANELS
 RUNNING VERTICALLY THROUGHOUT IN CUSTOM PATTERN.

PPG Coil Coatings

DURANAR VARI-COOL COATINGS

PRODUCT DATA

PRODUCT DESCRIPTION
 Includes a roof whose color shifts subtle from warm terracotta to rich copper tones and finally to steel tropical green. That's DURANAR VARI-Cool coatings in action. There's no other product like it that offers designers a unique look and meets the needs of builders. This groundbreaking polychromatic coating delivers a palette of vibrant color, while offering superior protection that takes each project far into the future.

SYSTEM OVERVIEW
 DURANAR VARI-Cool IR reflective fluoropolymer coatings are multi-coat systems consisting of a minimal 0.2 mil primer and 0.7 - 0.8 mils fluoropolymer topcoat. They are available in a number of pre-formulated standard colors. Custom colors can also be formulated.

COMMERCIAL USES
 DURANAR VARI-Cool coatings are formulated to provide excellent performance against weathering in all environments. The cooling effects of DURANAR VARI-Cool coatings will offer potential benefits such as reduced air conditioning costs for commercial and residential construction, less product expansion and contraction, plus improved comfort levels for building occupants. The DURANAR VARI-Cool coating system is an excellent choice for architectural applications such as roof panels, building panels, curtain walls, store fronts, accents and corporate signage.

DURABILITY
 DURANAR VARI-Cool products benefit from the foundation of a factory applied Kynar 500 or Hylar 5000 resin system, which are well known as best-in-class coatings. Delivered in cost effective coil application, DURANAR VARI-Cool coatings provide durable, color fast, gloss-retention attributes while utilizing ULTRA-Cool reflective coating technology.

When applied and cured on properly prepared substrates, DURANAR VARI-Cool coatings offer brilliant color change along with exceptional color stability, chalk resistance, durability, abrasion resistance, chemical resistance and flexibility. Your polychromatic coating will remain beautiful for decades.

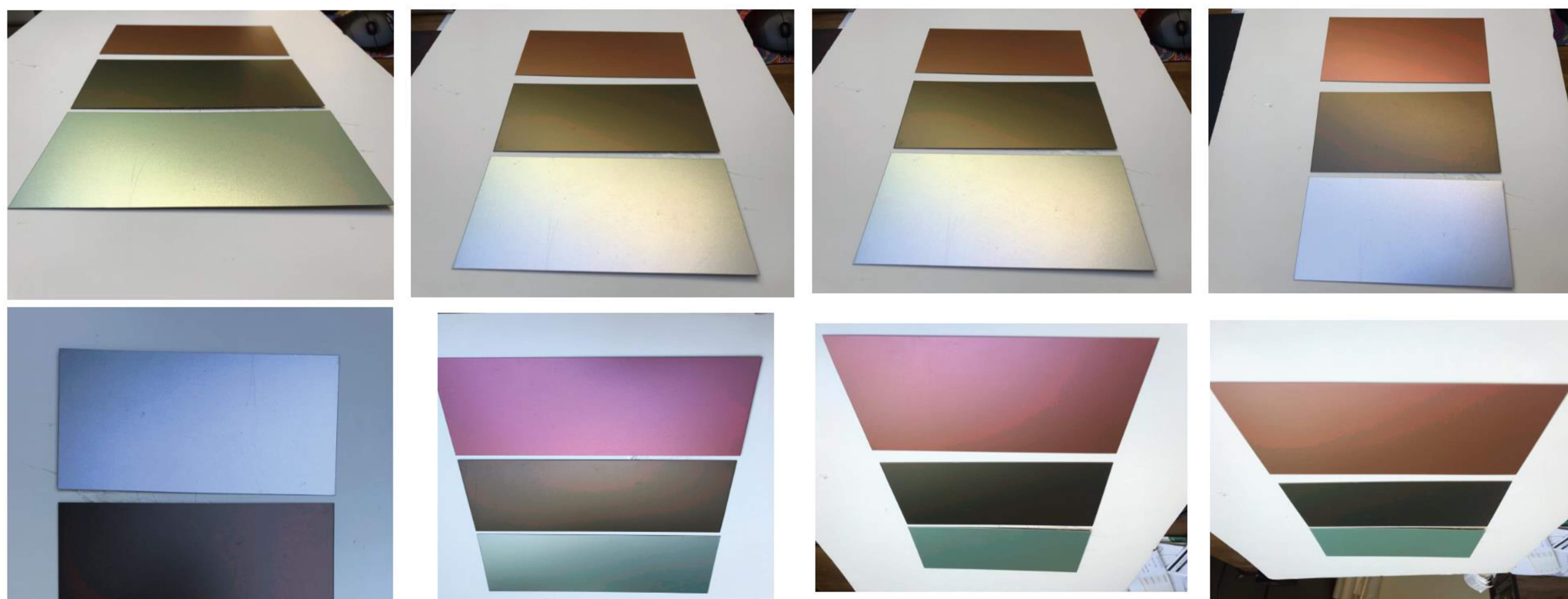
DURANAR ULTRA-Cool and the PPG logo are registered trademarks of PPG Industries, Inc. VARI-Cool and the CoolWave are trademarks of PPG Industries, Inc.

ColorWave is a registered trademark of BEC International, Inc.

Zinc-borne is a registered trademark of Dinsmore Steel Lining.

Kynar 500 is a registered trademark of Akzo Coatings with the U.S.

Hylar 5000 is a registered trademark of Huls-Akzo, Inc.



PRELIMINARY LIGHT ANGLE - COLOR CHANGE TEST

- A.) Use Of 3 PPG Vari-Cool color 4" x 8" samples
- B.) CAMERA LENS AXIS STAYS THE SAME AND ROTATES OVER 140 DEGREES
- C.) SUN POSITION STAYS THE SAME (TAKEN OVER 15 SECOND TIME FRAME)

progression

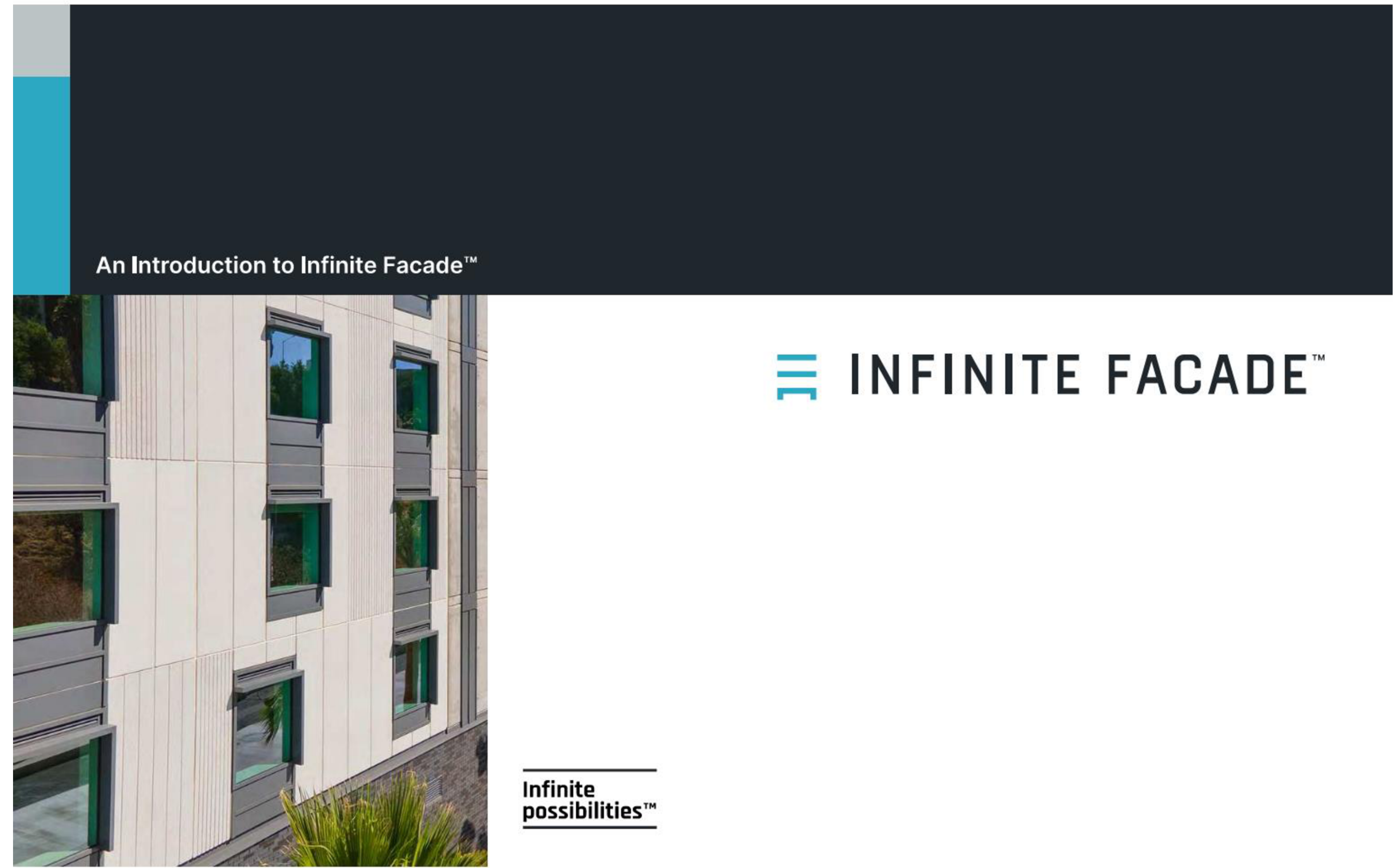
139 West Wilson
Madison, Wisconsin

WALL PANELS

Revisions:

Project #: _____
 Issued For: Review
 Date: 02/21/2022

A3.0



OPTION B DESIGN INTENT : CREATE PANEL QUILT WITH LARGE DIVERSITY OF TEXTURE AND COLOR.

UTILIZE ULTIMATE CUSTOMIZATION OPTIONS FOR VARIATION OF:

- TEXTURE
- MATERIAL FINISHES
- PATTERNING
- COLOR

- WELLS - IN FINITE FACADES ARE PRE-CAST GYPCRETE WALL PANELS WITH INTEGRATED WINDOW AND LOUVER SYSTEMS WITH LIMITLESS MATERIAL, COLOR AND MATERIAL FINISH OPTIONS.

1 PRE-FABRICATED WALL PANEL OPTION B

progression
 139 West Wilson
 Madison, Wisconsin
 WALL PANELS

Revisions:	

Project #:
 Issued For: Review
 Date: 02/21/2022

A3.1