



VANDEWALLE & ASSOCIATES INC.

To: Urban Design Commission
From: Brian Munson
CC: Core Spaces Design Team
Alder Verveer
Tim Kamps, Capital Neighborhoods Association
Eli Tsarovsky, CANA Neighborhood Association
Date: Monday, February 13, 2023
Re: 436 West Johnson (See attached): Informational Presentation #2

The revised informational submittal for the Johnson & Bassett Project incorporates UDC input from the January 11th UDC informational presentation, including significant changes to articulation, materials, and color selections.

Applicant: Core Madison Bassett, LLC.
1643 North Milwaukee Street
Chicago, IL 60647

Design Team:
Architecture: Kahler Slater
722 Williamson Street
Madison, WI 53703

Engineering: Vierbicher
999 Fournier Drive
Madison, WI 53717

Landscape: Site Design
888 South Michigan Avenue
Chicago, IL 60605

120 East Lakeside Street • Madison, Wisconsin 53715 • 608.255.3988 • 608.255.0814 Fax
247 Freshwater Way, Suite 530 • Milwaukee, Wisconsin 53204 • 414.988.8631

www.vandewalle.com

Shaping places, shaping change

Planning: Vandewalle & Associates
120 East Lakeside Street
Madison, WI 53715

We look forward to continuing the discussion on this project with the commission, neighborhood, and staff prior to a formal submittal next month.

Sincerely,

A handwritten signature in black ink, appearing to read 'Brian Munson', with a long horizontal flourish extending to the right.

Brian Munson

STUDENT HOUSING

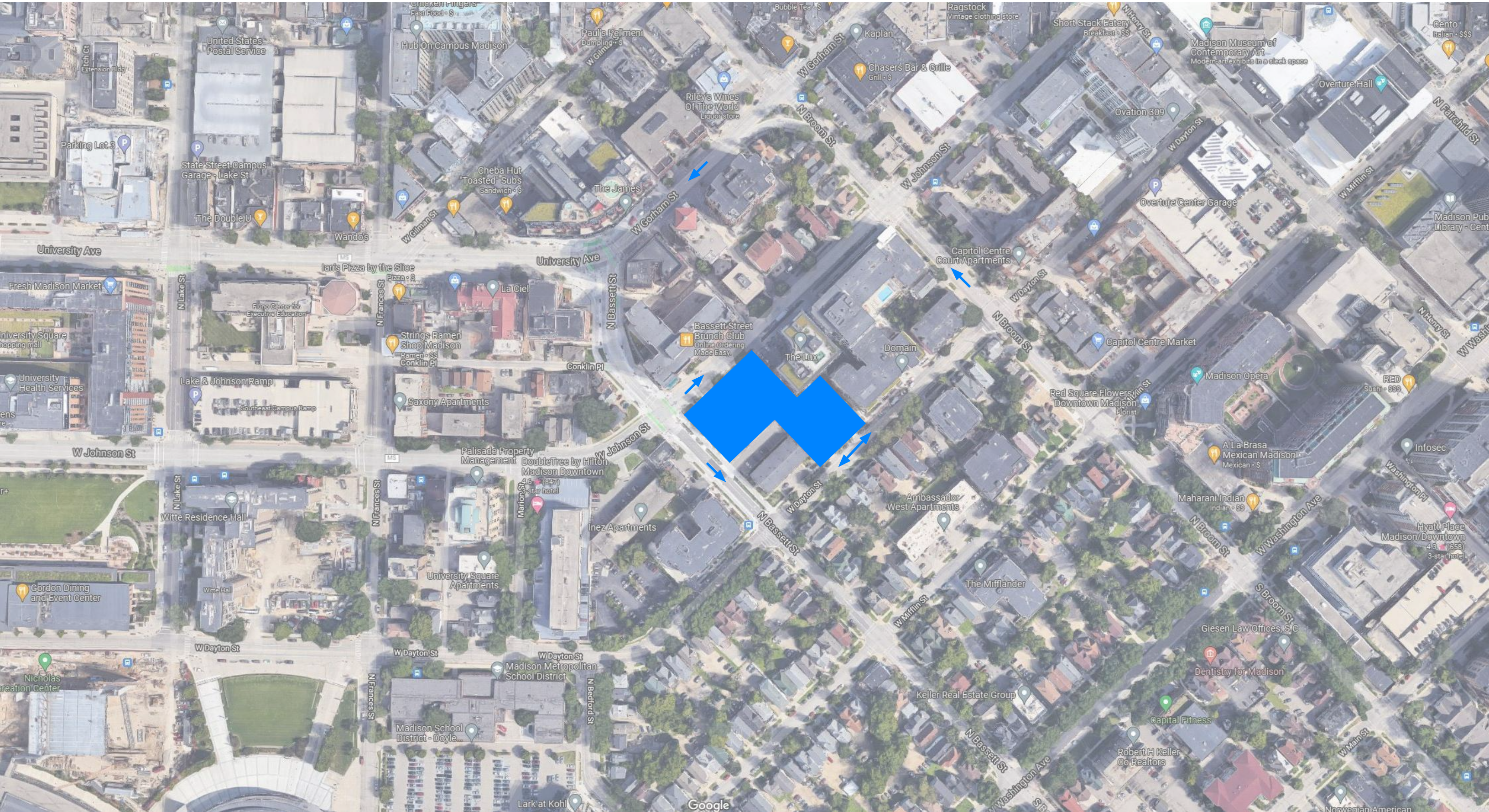
JOHNSON STREET | MADISON, WISCONSIN

CORE MADISON BASSETT, LLC

UDC INFORMATIONAL SUBMITTAL
FEBRUARY 13, 2023

Kahler Slater

LOCATOR MAP



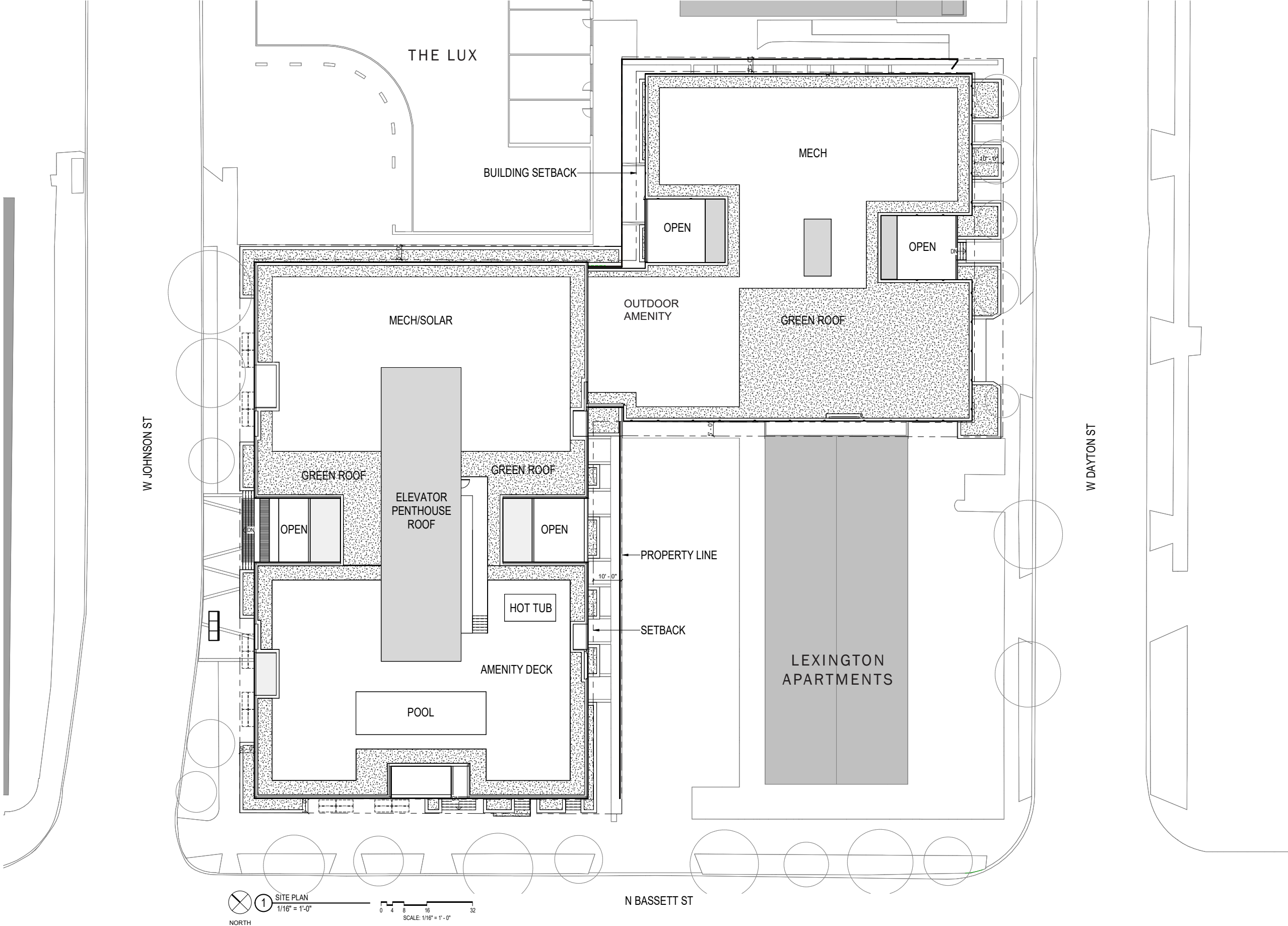
SITE CONTEXT - STREET VIEWS


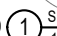


SITE CONTEXT - STREET VIEWS



SITE PLAN

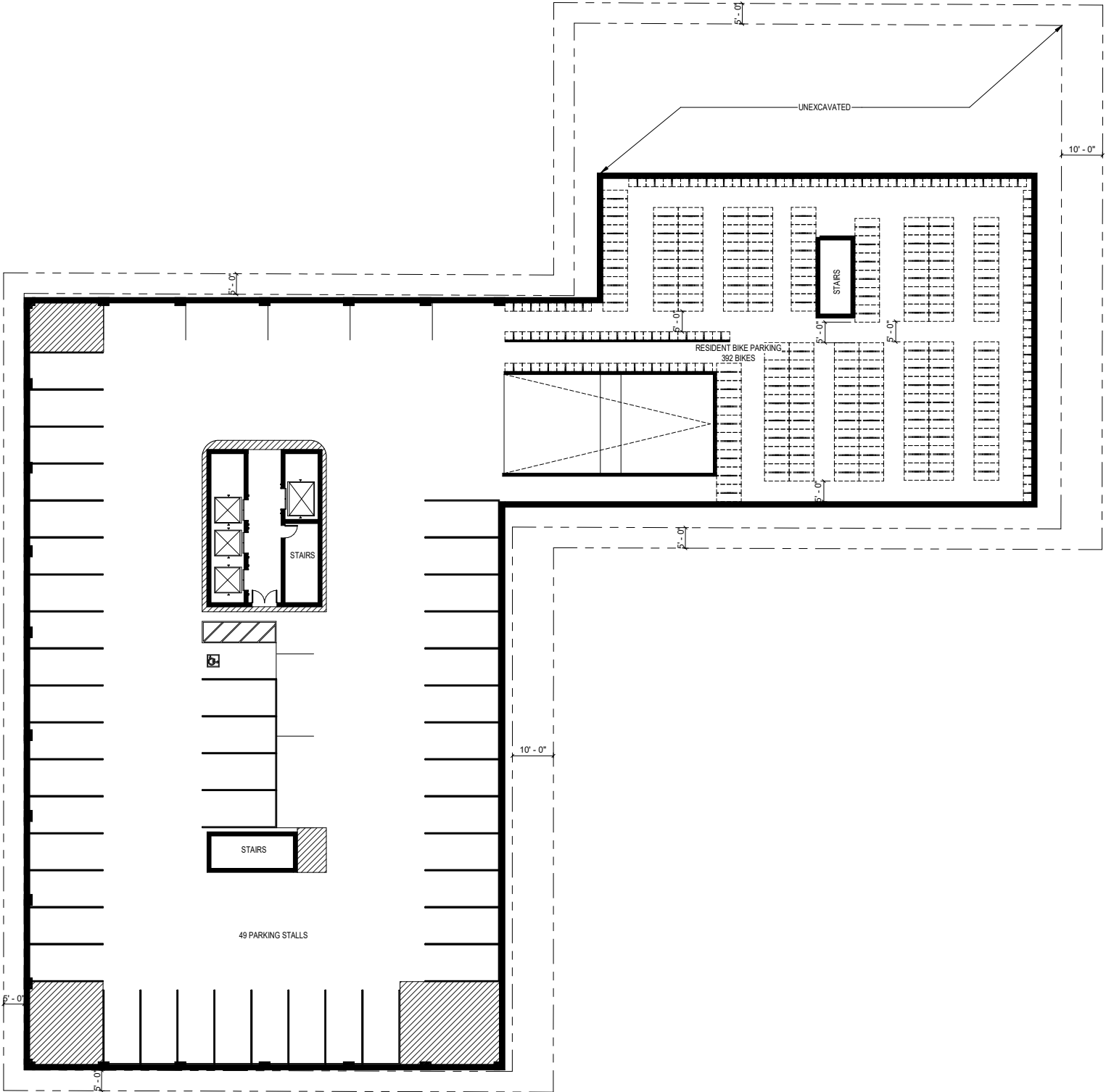



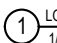


1 SITE PLAN
 1/16" = 1'-0"
 NORTH

0 4 8 16 32
 SCALE: 1/16" = 1'-0"

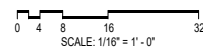
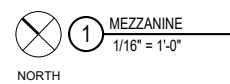
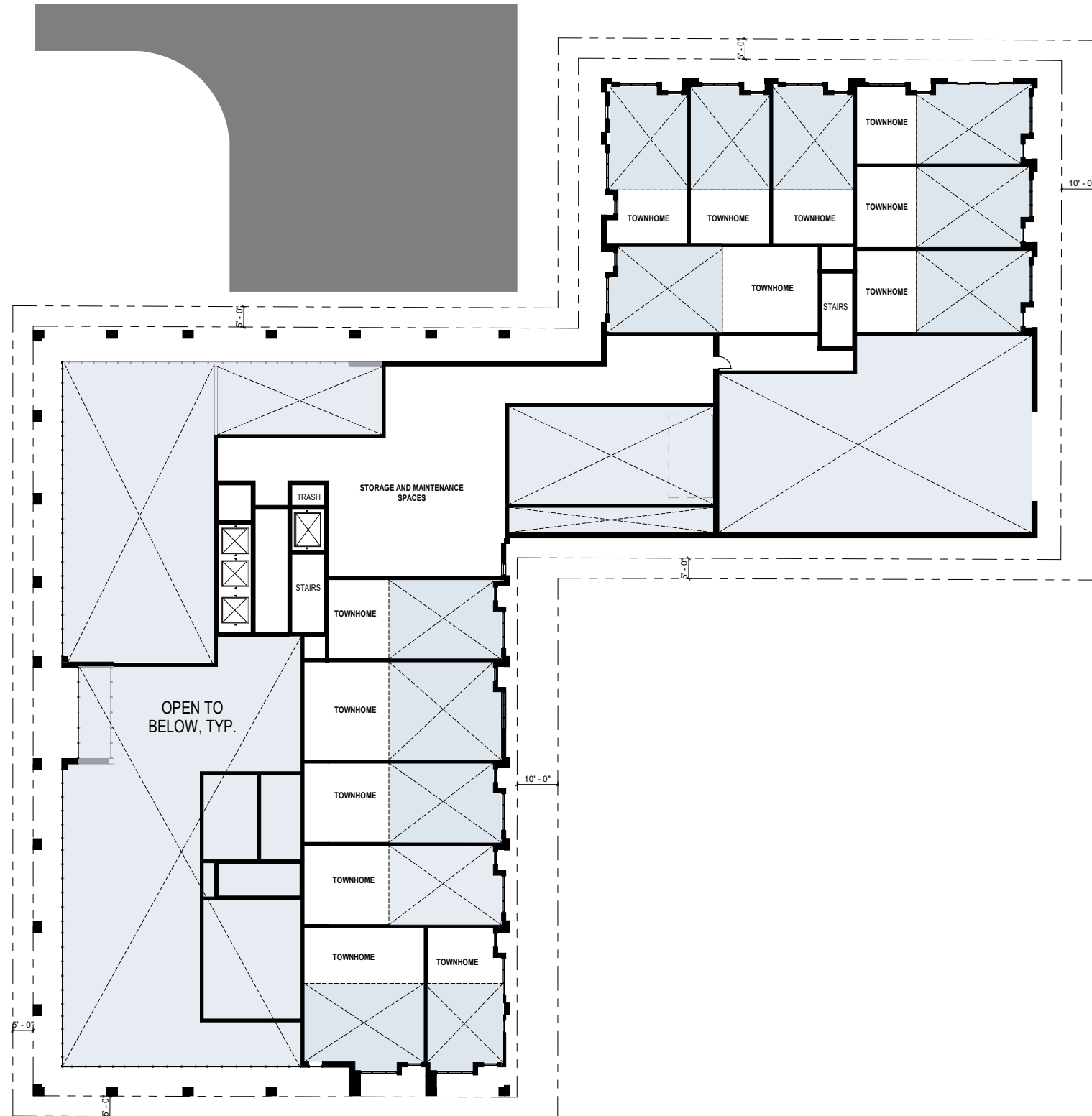
N BASSETT ST

FLOOR PLAN - LOWER LEVEL





 LOWER LEVEL PLAN
 1/16" = 1'-0"
 0 4 8 16 32
 SCALE: 1/16" = 1'-0"

FLOOR PLAN - TOWNHOMES UPPER LEVEL

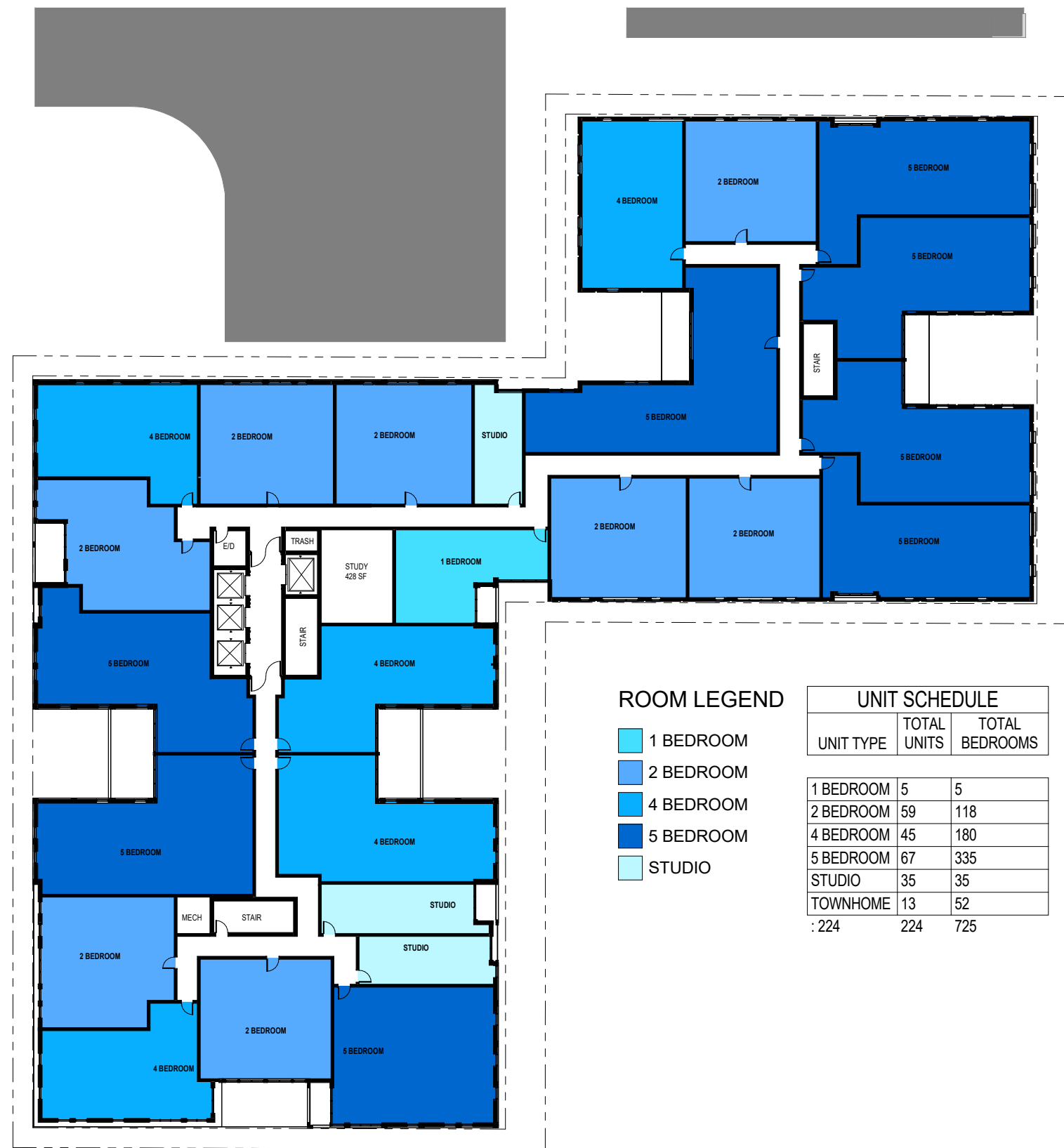




FLOOR PLAN - 2ND




1 2ND FLOOR PLAN
 1/16" = 1'-0"
 SCALE: 1/16" = 1'-0"
 0 4 8 16 32

FLOOR PLAN - 3RD-6TH





 ① 3RD - 6TH TYPICAL FLOOR PLAN
 1/16" = 1'-0"
 SCALE: 1/16" = 1'-0"
 NORTH

FLOOR PLAN - 7TH

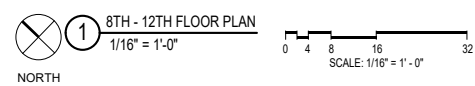
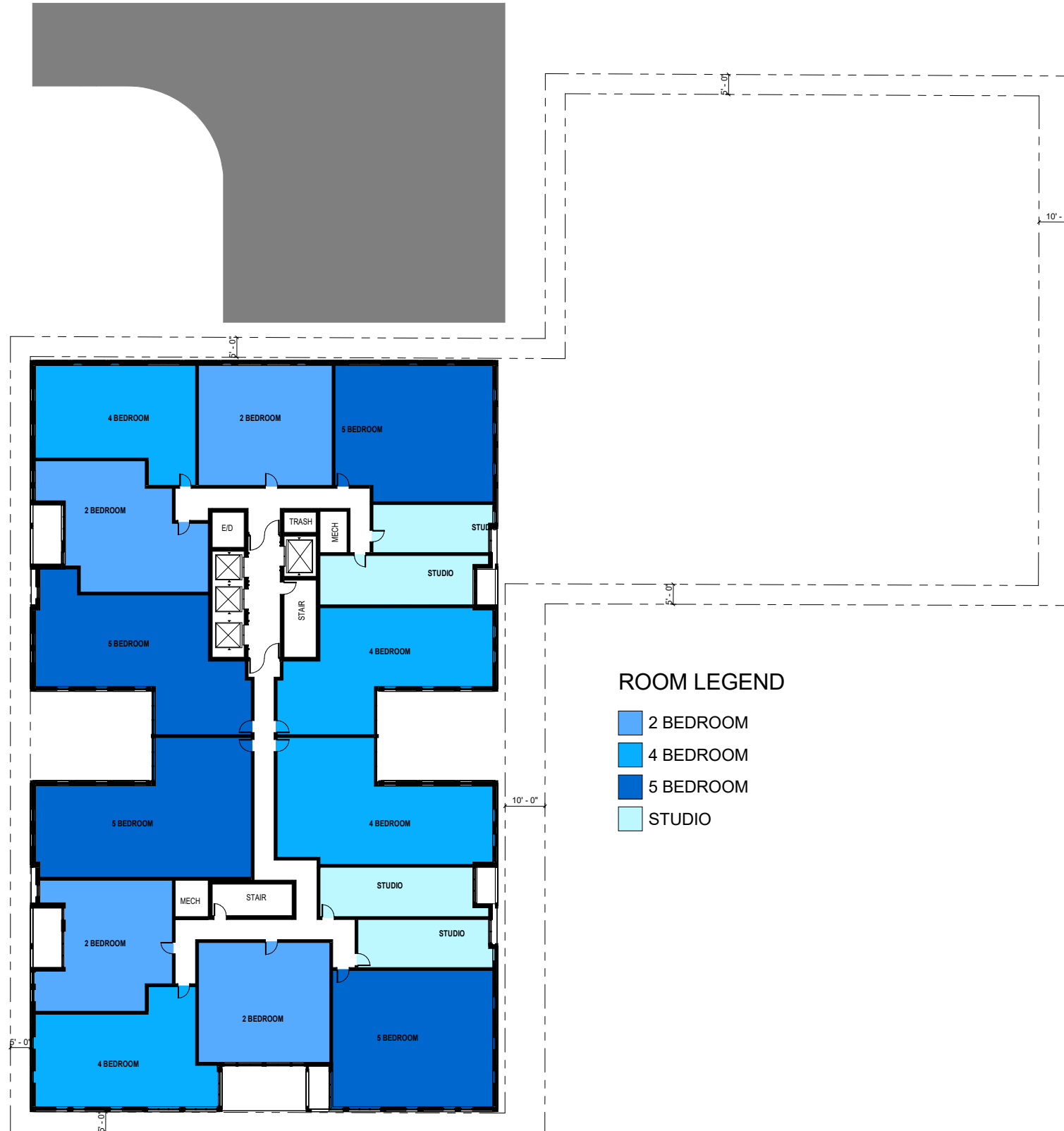


ROOM LEGEND

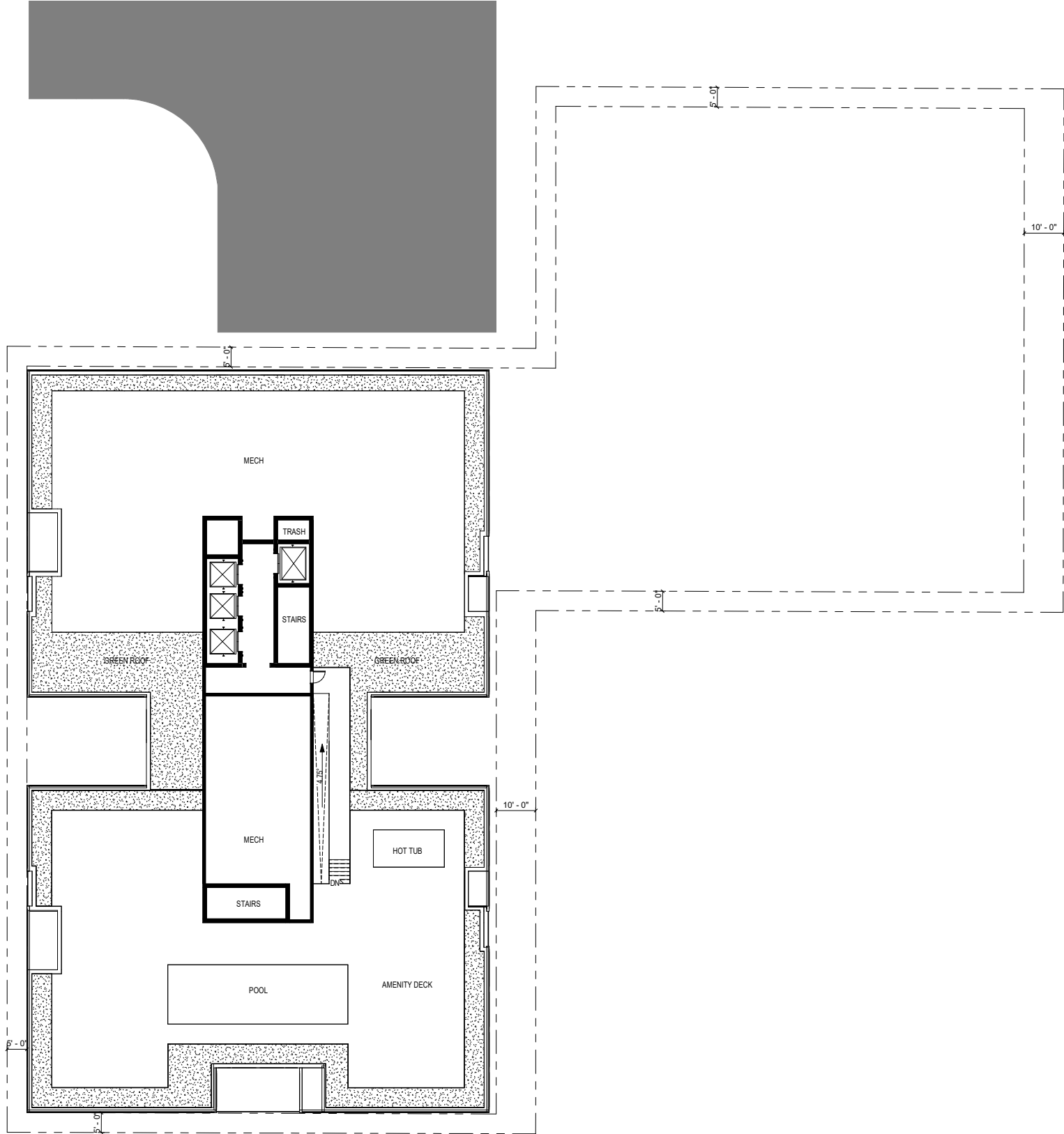
- 2 BEDROOM
- 4 BEDROOM
- 5 BEDROOM
- AMENITY
- STUDIO


1 7TH FLOOR PLAN
 1/16" = 1'-0"
 NORTH 0 4 8 16 32 SCALE: 1/16" = 1'-0"

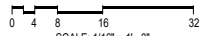
FLOOR PLAN - 8TH-12TH



FLOOR PLAN - ROOF




1 ROOF
 1/16" = 1'-0"
 NORTH


 SCALE: 1/16" = 1'-0"

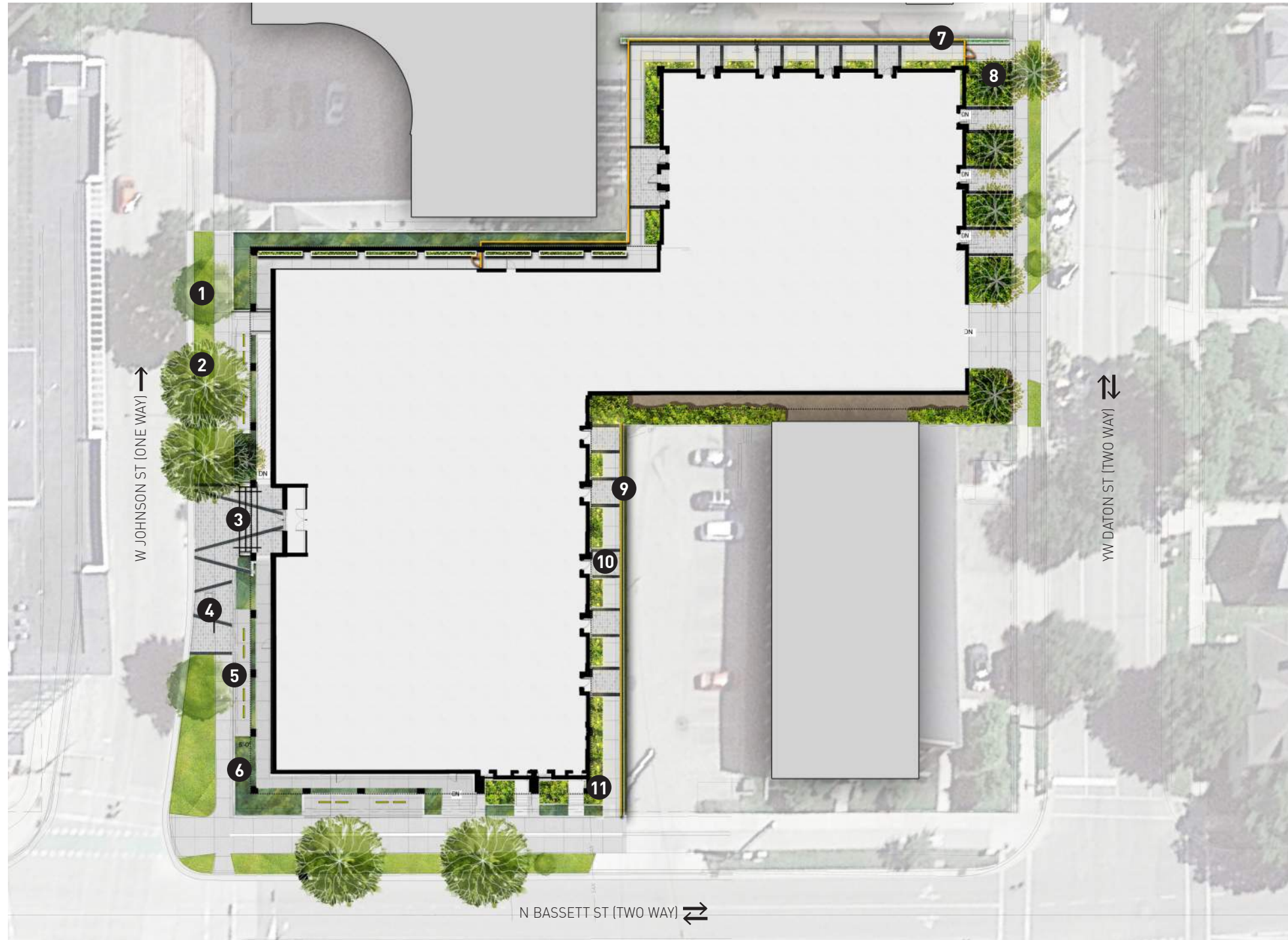
LANDSCAPE CONCEPT



888 south michigan avenue
 suite 1000 chicago, illinois 60605
 tel 312.427.7240 fax 312.427.7241
 www.site-design.com

CORE SPACES JOHNSON AND BASSETT, MADISON, WISCONSIN

Schematic Design, Project Number: 9591
 Feb 9th, 2023



LEGEND:

- 1 PARKWAY W/ EXISTING TREE
- 2 PROPOSED SHADE TREE
- 3 ENTRY PLAZA W/ SPECIALTY PAVER
- 4 BENCH
- 5 BIKE RACKS
- 6 RAISED PLANTERS
- 7 PLANTER ALONG BUILDING FACADE
- 8 PROPOSED ORNAMENTAL TREE
- 9 LANDSCAPE SCREENING
- 10 PRIVATE ENTRY
- 11 LANDSCAPE LIGHTING

0'-0" 20'-0" 40'-0" 80'-0"

1 CONCEPT 1 A- PLAN
 SCALE: 1" = 30'-0"



LANDSCAPE CONCEPT PRECEDENTS



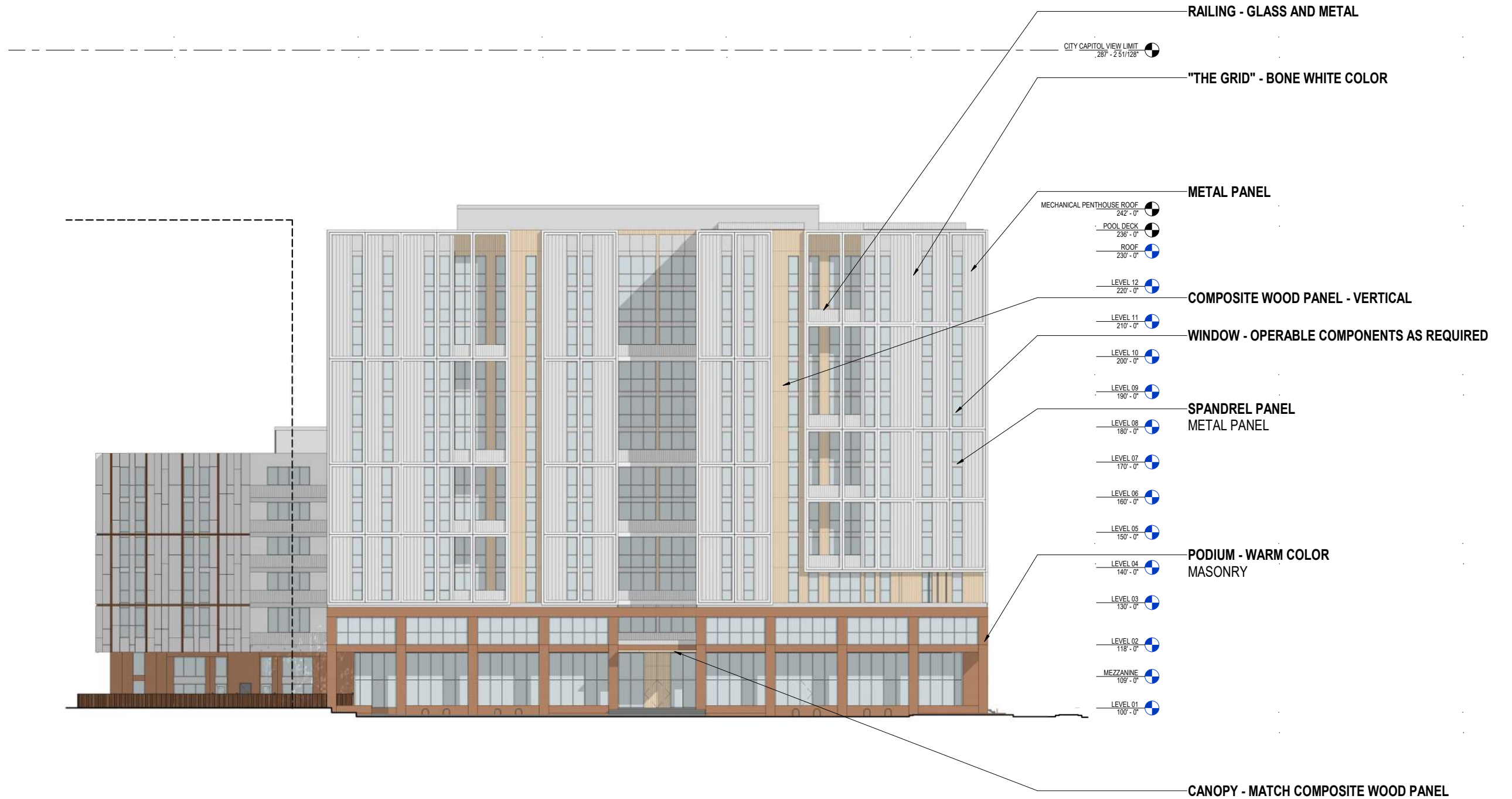
888 south michigan avenue
suite 1000 chicago, illinois 60605
tel 312.427.7240 fax 312.427.7241
www.site-design.com

CORE SPACES JOHNSON AND BASSETT, MADISON , WISCONSIN

Schematic Design, Project Number: 9591
Feb 9th, 2023



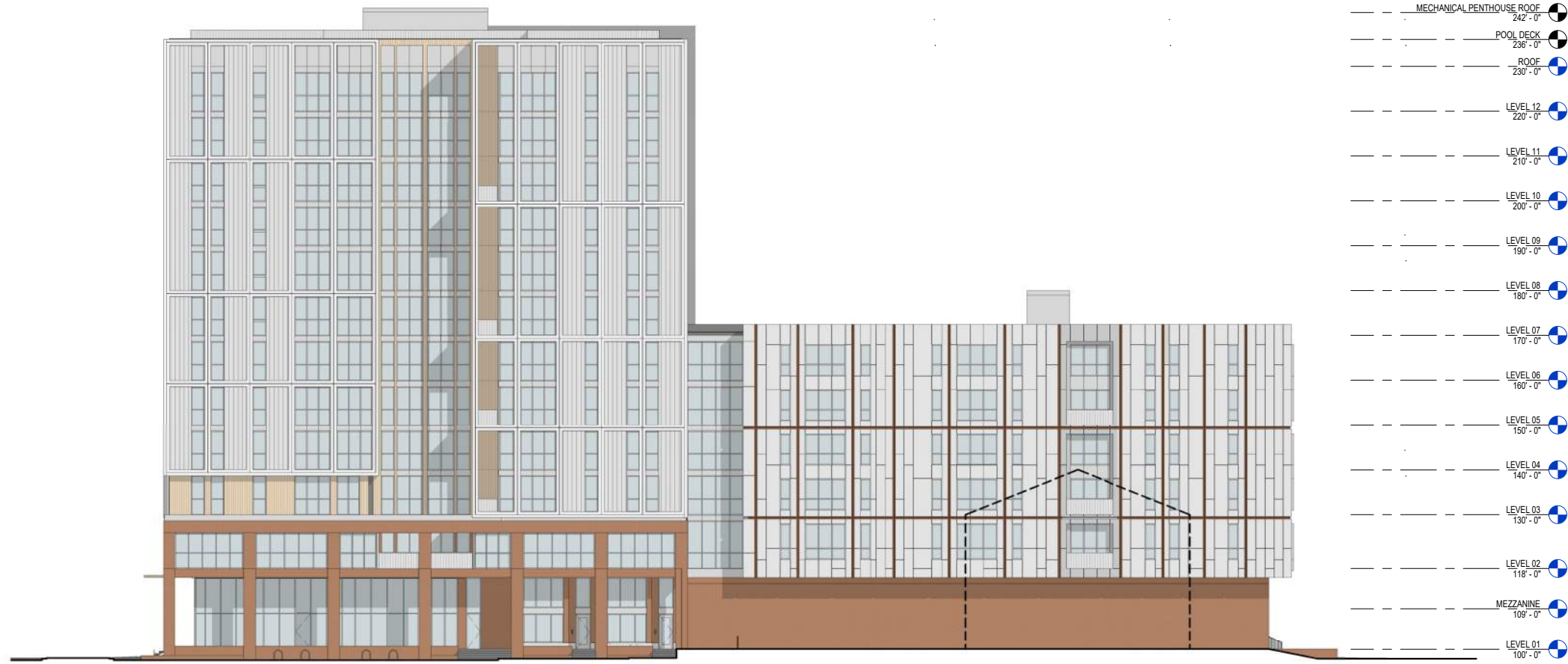
ELEVATION - NW / JOHNSON STREET



① ELEVATION - WEST
 1/16" = 1'-0"
 SCALE: 1/16" = 1'-0"

ELEVATION - SW / BASSETT STREET

CITY CAPITOL VIEW LIMIT
287 - 2 51128'



① ELEVATION - SOUTH
1/16" = 1'-0"
0 4 8 16 32
SCALE: 1/16" = 1'-0"

ELEVATION - SE / DAYTON STREET

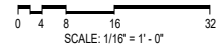


ELEVATION - NE

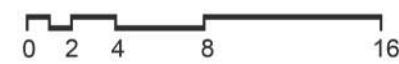
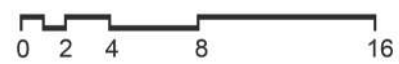
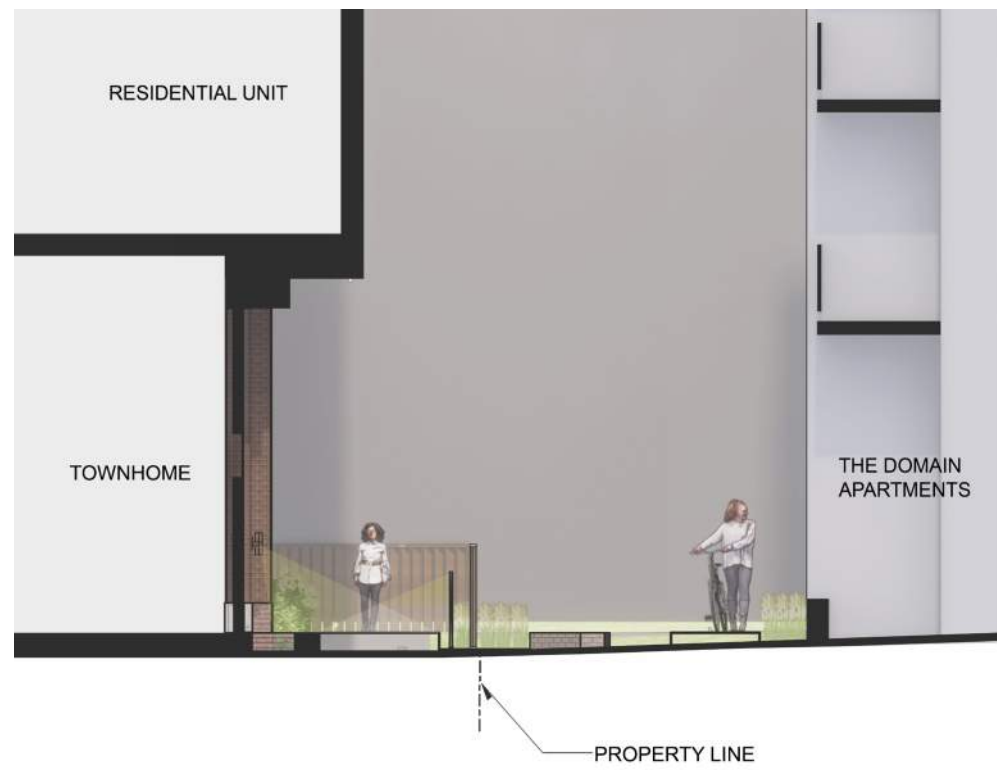
CITY CAPITOL VIEW LIMIT
287 - 2.51/128'



① ELEVATION - NORTH
1/16" = 1'-0"



ENLARGED TOWNHOME ELEVATIONS AND SECTIONS



INITIAL UDC SUBMITTAL DESIGN



CURRENT DESIGN | PERSPECTIVE - JOHNSON & BASSETT



CURRENT DESIGN | ELEVATION PERSPECTIVE - JOHNSON ST.



CURRENT DESIGN | PERSPECTIVE - BASSETT ST.



CURRENT DESIGN | PERSPECTIVE - DAYTON ST.



CURRENT DESIGN | ELEVATION PERSPECTIVE - DAYTON ST.



Kahler Slater

Milwaukee | Madison | Chicago | Richmond

www.kahlerslater.com