

These photos help depict how a 4 story structure will tower over the neighbor's homes and backyards. They also show how much green space will be lost by adding a building with such a large footprint.

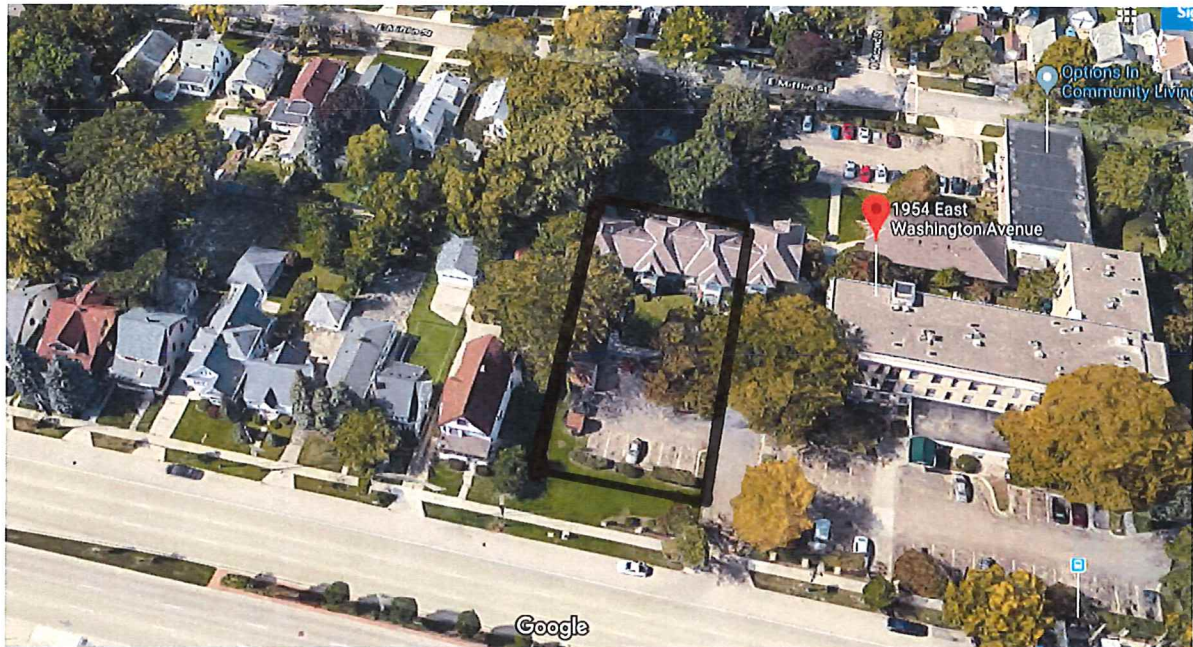
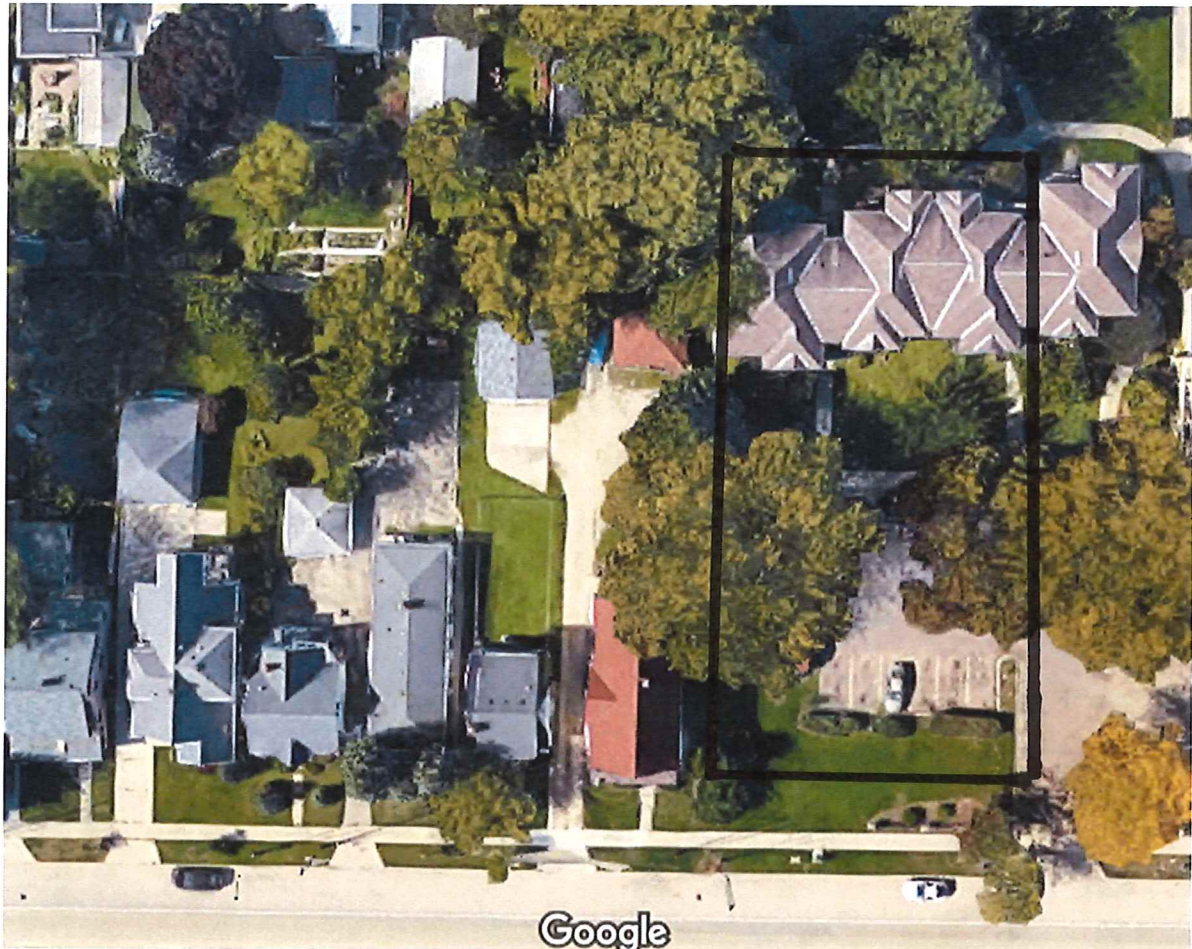
These are the five homes directly to the west of the proposed development. Clearly a 4 story building is out of place.



Green space and the tree that will be lost.



These photos help show the proportion of the proposed building and the green space that would be lost at the development site.



This photo was taken from the backyard of a home mid-block on East Washington looking towards the proposed development site.



With the proposed development the neighbors will no longer have privacy in their backyards. And instead of seeing sky and a beautiful old growth tree they will see nothing but a wall of building.

