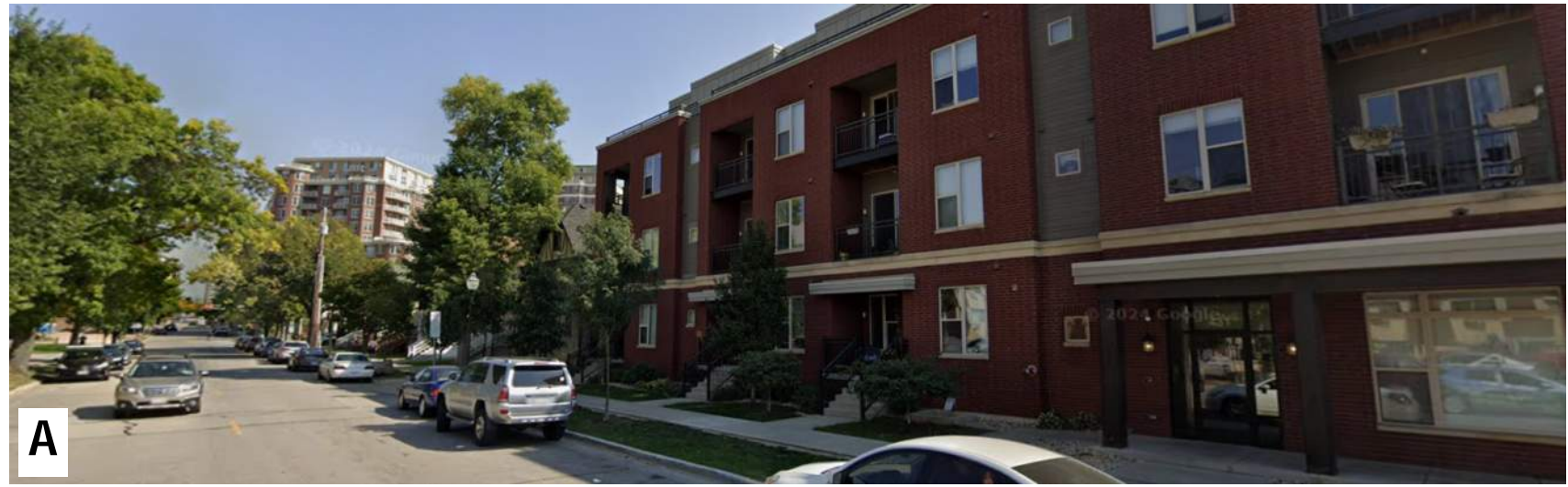
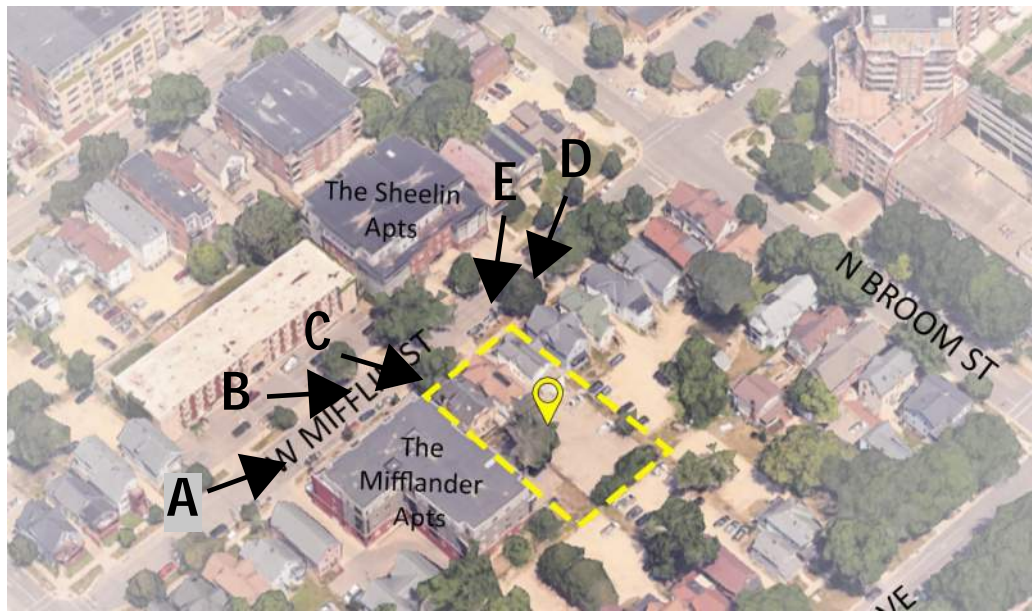


SITE LOCATOR MAP

The Kronenberg
423-427 W. Miiflin St., Madison, WI

UDC FINAL PRESENTATION | 2024.11.06 | 2253





CONTEXT PHOTOS

Level 1 Plan
Lobby, Amenity, & Residential

W. Mifflin St.

Main Entry Parking & Service

North

423-427
W. MIFFLIN

413-417
W. MIFFLIN

Dog Run

THROUGH BLOCK CONNECTION

PROPOSED REDEVELOPMENT
AT 413-417 W. MIFFLIN &
418-446 W. WASHINGTON AVE

- Residential
- Leasing
- Public/Amenity
- Support
- Elevator / Stairs

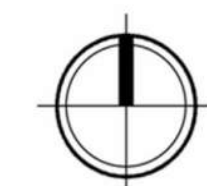
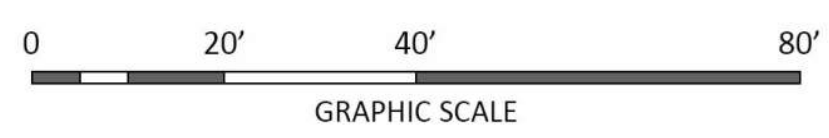
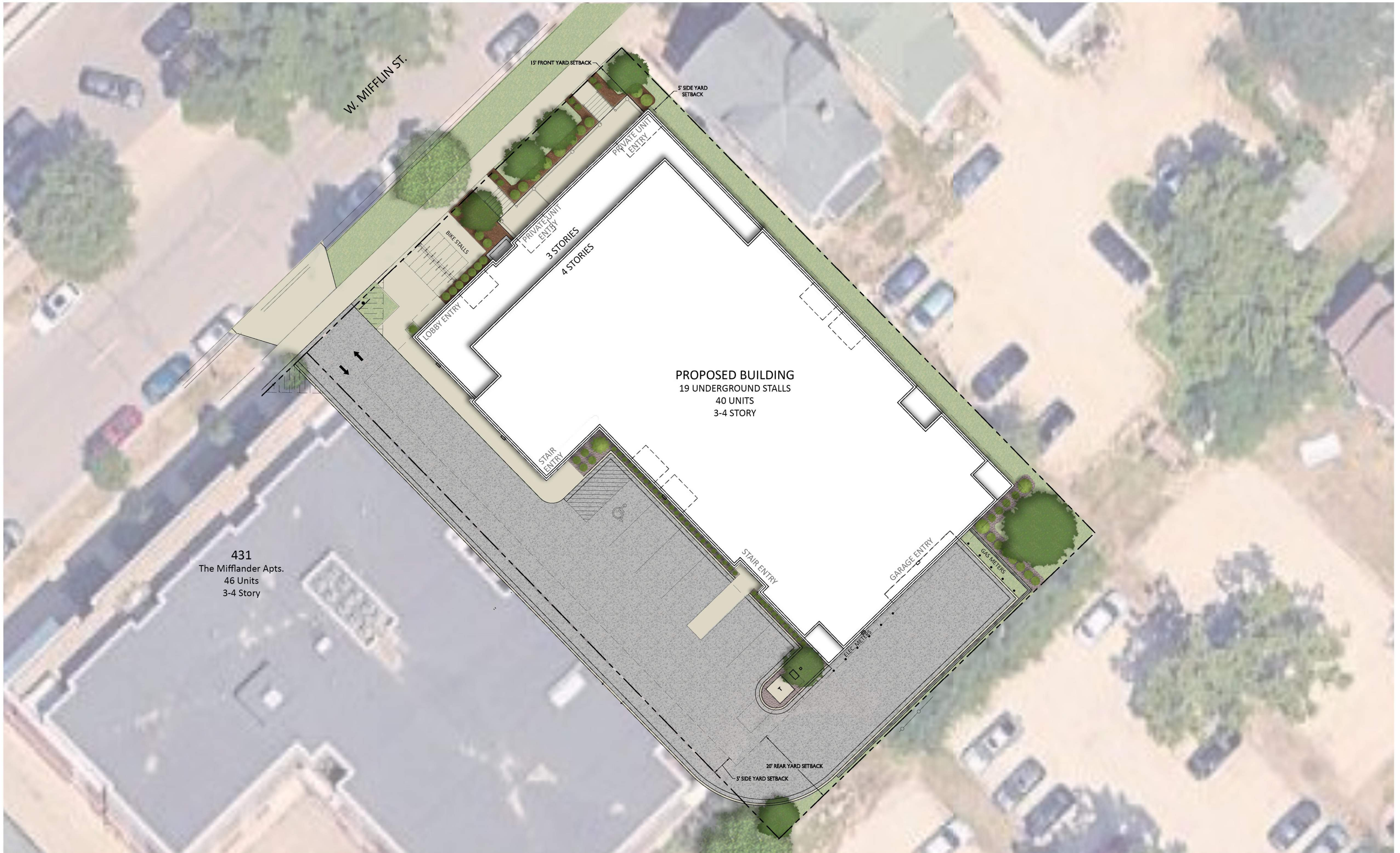
Walk Up Units

Secondary Entry

Main Entry

Bikes

W. Washington Ave.

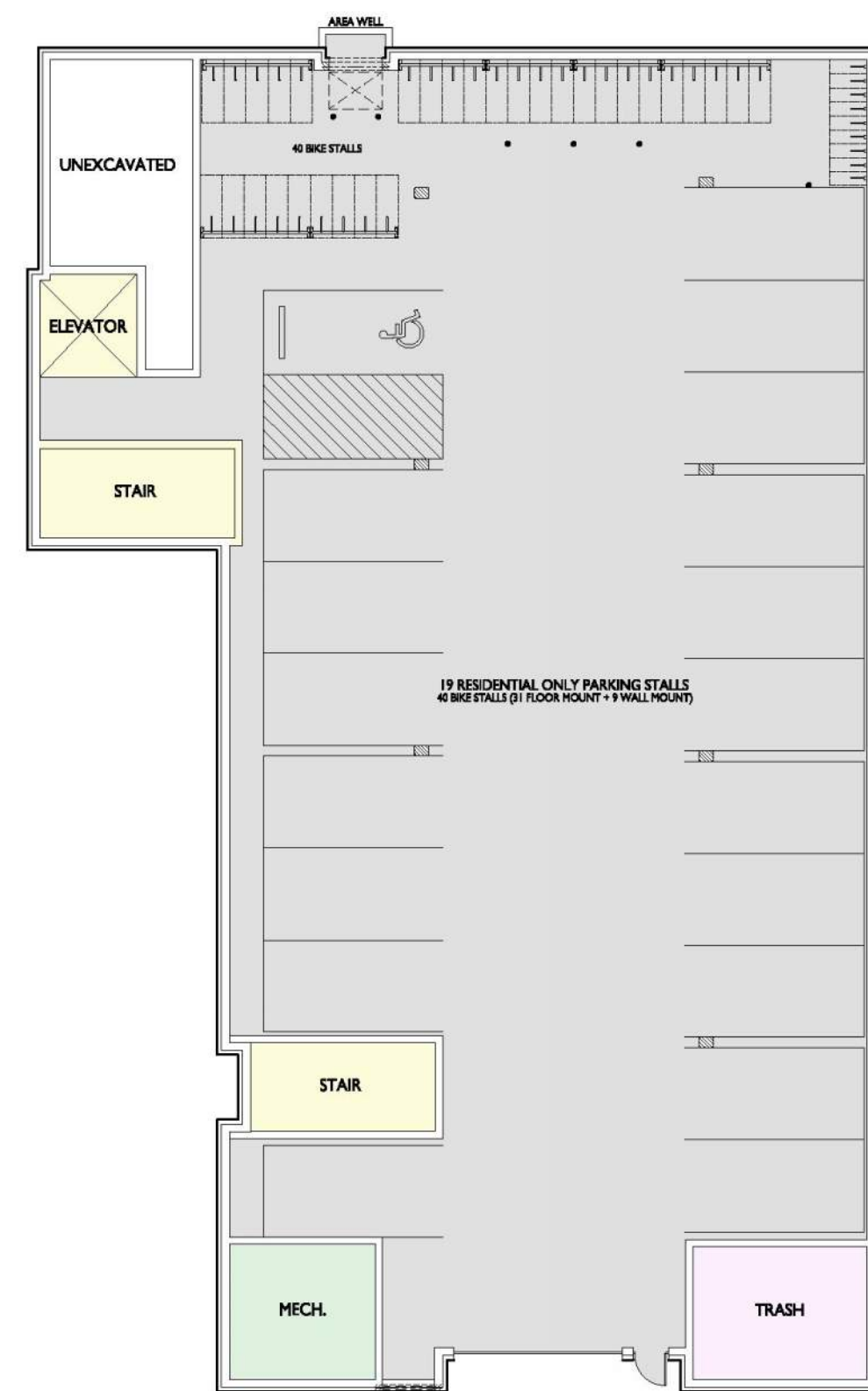


SITE PLAN

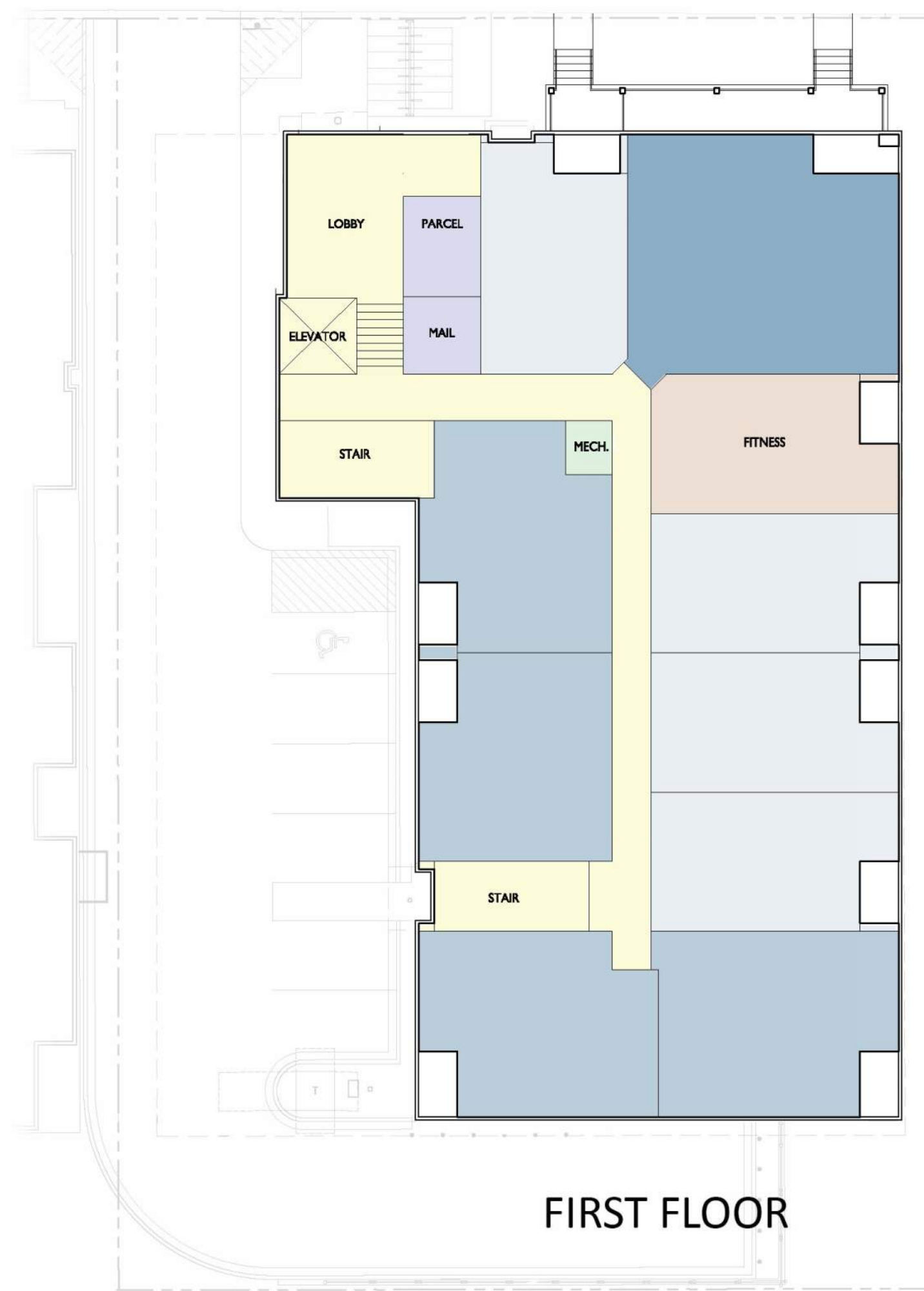
The Kronenberg
423-427 W. Mifflin St., Madison, WI

UDC FINAL PRESENTATION | 2024.11.06 | 2253





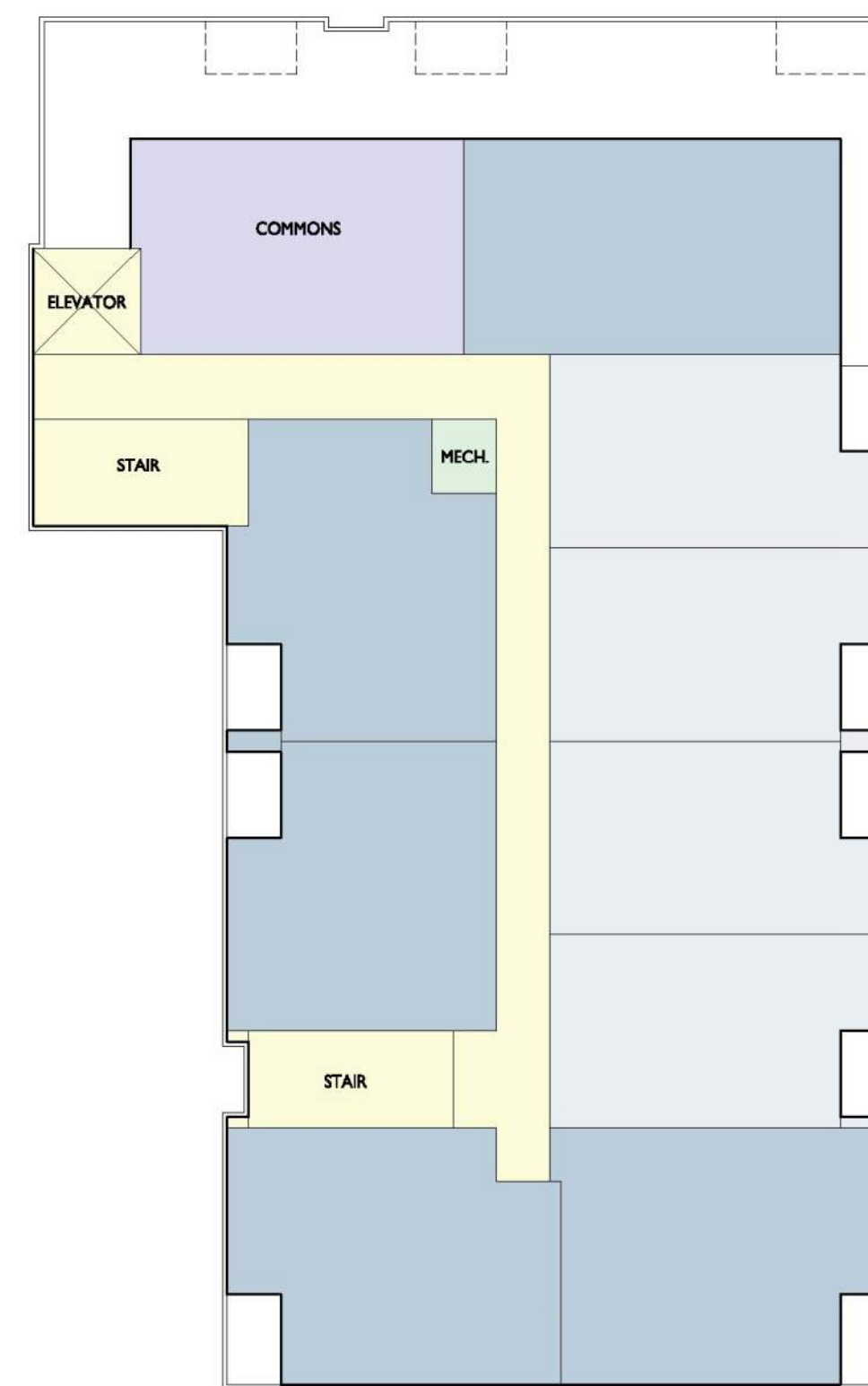
BASEMENT



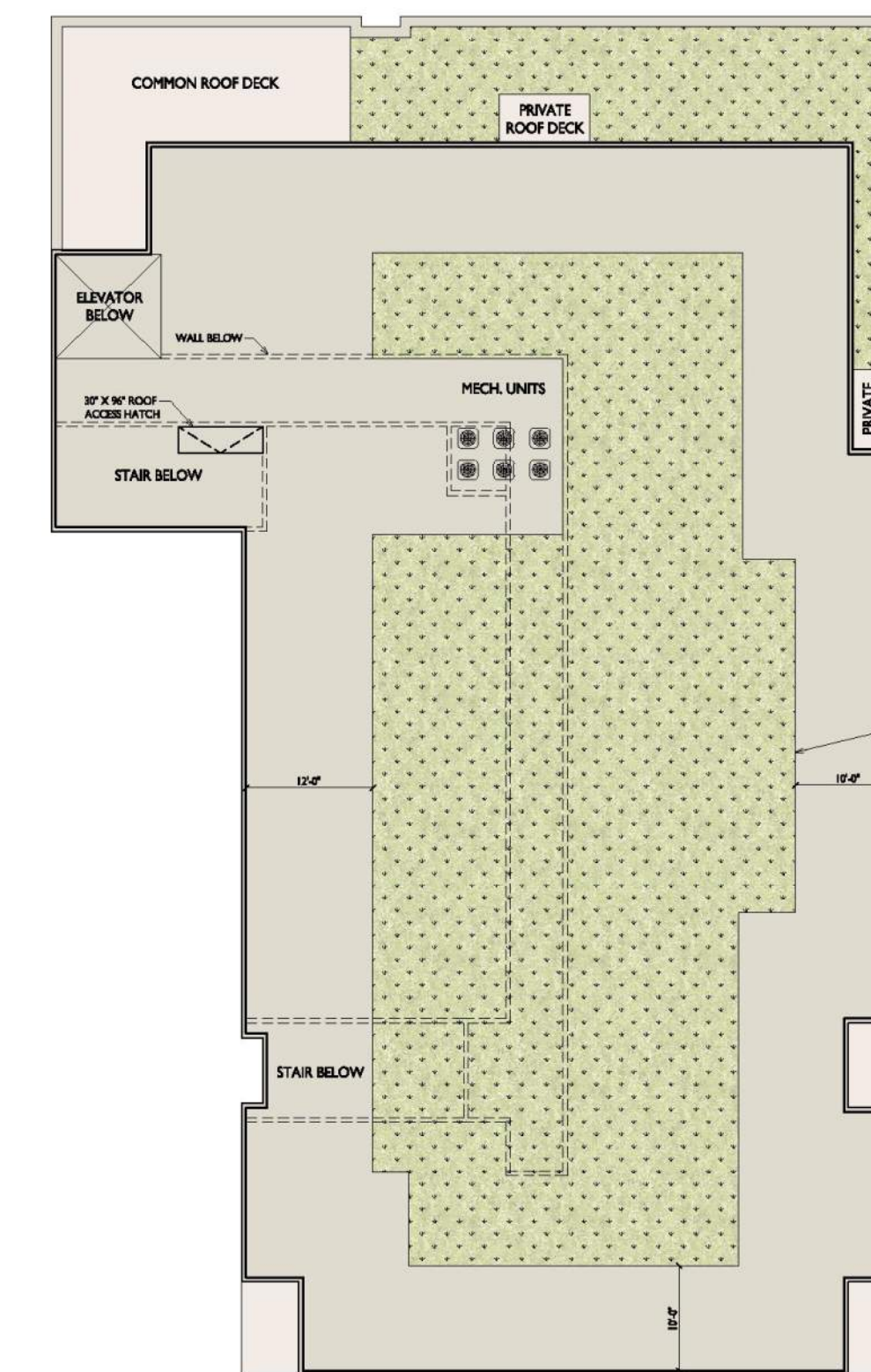
FIRST FLOOR



SECOND & THIRD FLOOR



FOURTH FLOOR



ROOF

LEGEND

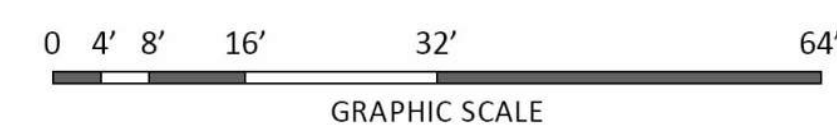
- CIRCULATION
- AMENITY - LEISURE
- AMENITY - ACTIVE
- STUDIO
- 1 BEDROOM
- 2 BEDROOM
- MECH./STORAGE
- GARAGE
- TRASH/RECYCLE
- GREEN ROOF
- ROOF
- ROOF DECK

UNIT MIX

STUDIO	18
1 BEDROOM	19
2 BEDROOM	3
TOTAL	40

VEHICLE PARKING

GARAGE	19
SURFACE	6
TOTAL	25



CONCEPT FLOOR PLANS



2 COLORED CITY ELEVATION - NORTHEAST
AC203 1/8" = 1'-0"

ISSUED
UDC SUBMITTAL - 2024.09.23
REVISION TO UDC SUBMITTAL 2024-10-21
UDC FINAL PRESENTATION 2024.11.06



1 COLORED CITY ELEVATION - NORTHWEST
AC203 1/8" = 1'-0"

PROJECT TITLE
The Kronenberg

423-427 W. Mifflin St.,
Madison, WI
SHEET TITLE
Exterior
Elevations Colored

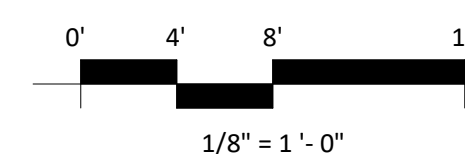
SHEET NUMBER

AC203

PROJECT NUMBER

2253

EXTERIOR MATERIAL SCHEDULE			
MARK	BUILDING ELEMENT	MANUFACTURER	COLOR
01	COMPOSITE LAP SIDING - ALTERNATING	JAMES HARDIE	IRON GRAY
02	COMPOSITE LAP SIDING - ALTERNATING	JAMES HARDIE	GRAY SLATE
03	COMPOSITE LAP SIDING - 6"	JAMES HARDIE	WOOD TONE - WINCHESTER BROWN
04	BRICK VENEER	SUMMIT BRICK	DOVE
05	BRICK SOLDIER COURSE	SUMMIT BRICK	DOVE
06	CAST STONE	ROCKCAST	REISLING
07	COMPOSITE TRIM	JAMES HARDIE	MATCH ADJ.
08	ALUMINIUM STOREFRONT	N/A	BLACK
09	RAILINGS & HANDRAILS	SUPERIOR	BLACK
10	COMPOSITE WINDOWS	ANDERSEN	BLACK

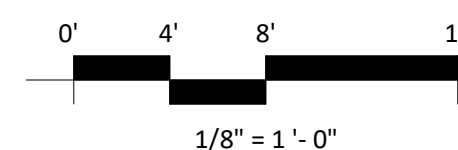




2 COLORED CITY ELEVATION - SOUTHWEST
AC204 1/8" = 1'-0"



1 COLORED CITY ELEVATION - SOUTHEAST
AC204 1/8" = 1'-0"



EXTERIOR MATERIAL SCHEDULE			
MARK	BUILDING ELEMENT	MANUFACTURER	COLOR
01	COMPOSITE LAP SIDING - ALTERNATING	JAMES HARDIE	IRON GRAY
02	COMPOSITE LAP SIDING - ALTERNATING	JAMES HARDIE	GRAY SLATE
03	COMPOSITE LAP SIDING - 6"	JAMES HARDIE	WOOD TONE - WINCHESTER BROWN
04	BRICK VENEER	SUMMIT BRICK	DOVE
05	BRICK SOLDIER COURSE	SUMMIT BRICK	DOVE
06	CAST STONE	ROCKCAST	REISLING
07	COMPOSITE TRIM	JAMES HARDIE	MATCH ADJ.
08	ALUMINIUM STOREFRONT	N/A	BLACK
09	RAILINGS & HANDRAILS	SUPERIOR	BLACK
10	COMPOSITE WINDOWS	ANDERSEN	BLACK

ISSUED
UDC SUBMITTAL - 2024.09.23
REVISION TO UDC SUBMITTAL 2024-10-21
UDC FINAL PRESENTATION 2024.11.06

NOT FOR CONSTRUCTION

PROJECT TITLE
The Kronenberg

423-427 W. Mifflin St.,
Madison, WI
SHEET TITLE
Exterior
Elevations Colored

SHEET NUMBER

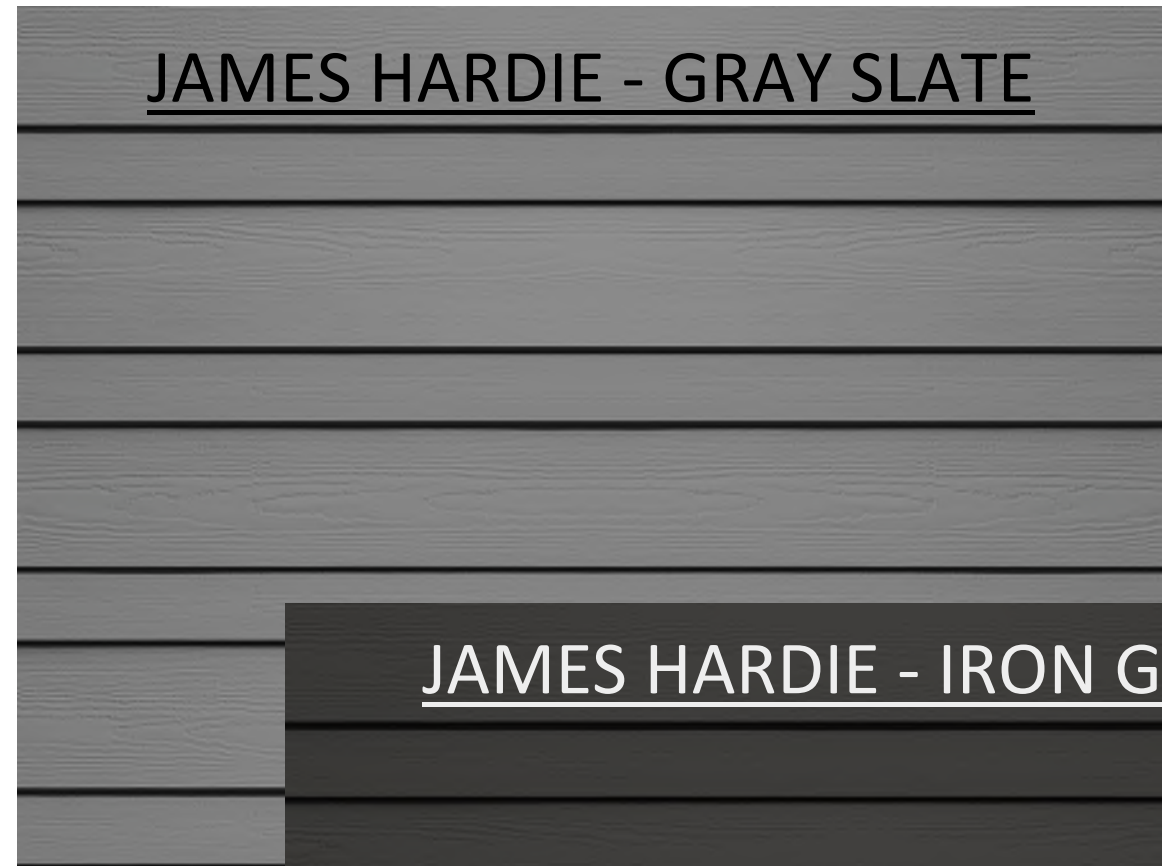
AC204

PROJECT NUMBER

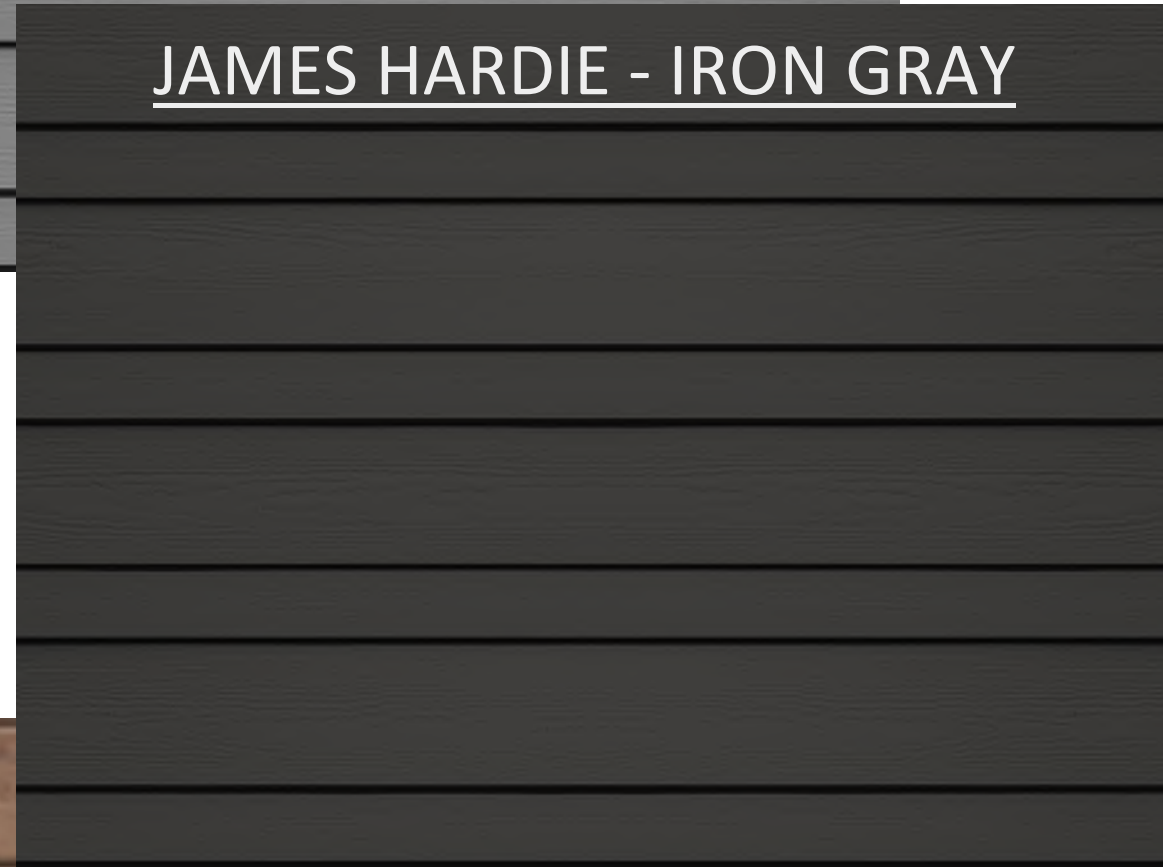
2253



ISSUED
UDC SUBMITTAL - 2024.09.23
REVISION TO UDC SUBMITTAL 2024-10-21
UDC FINAL PRESENTATION 2024.11.06



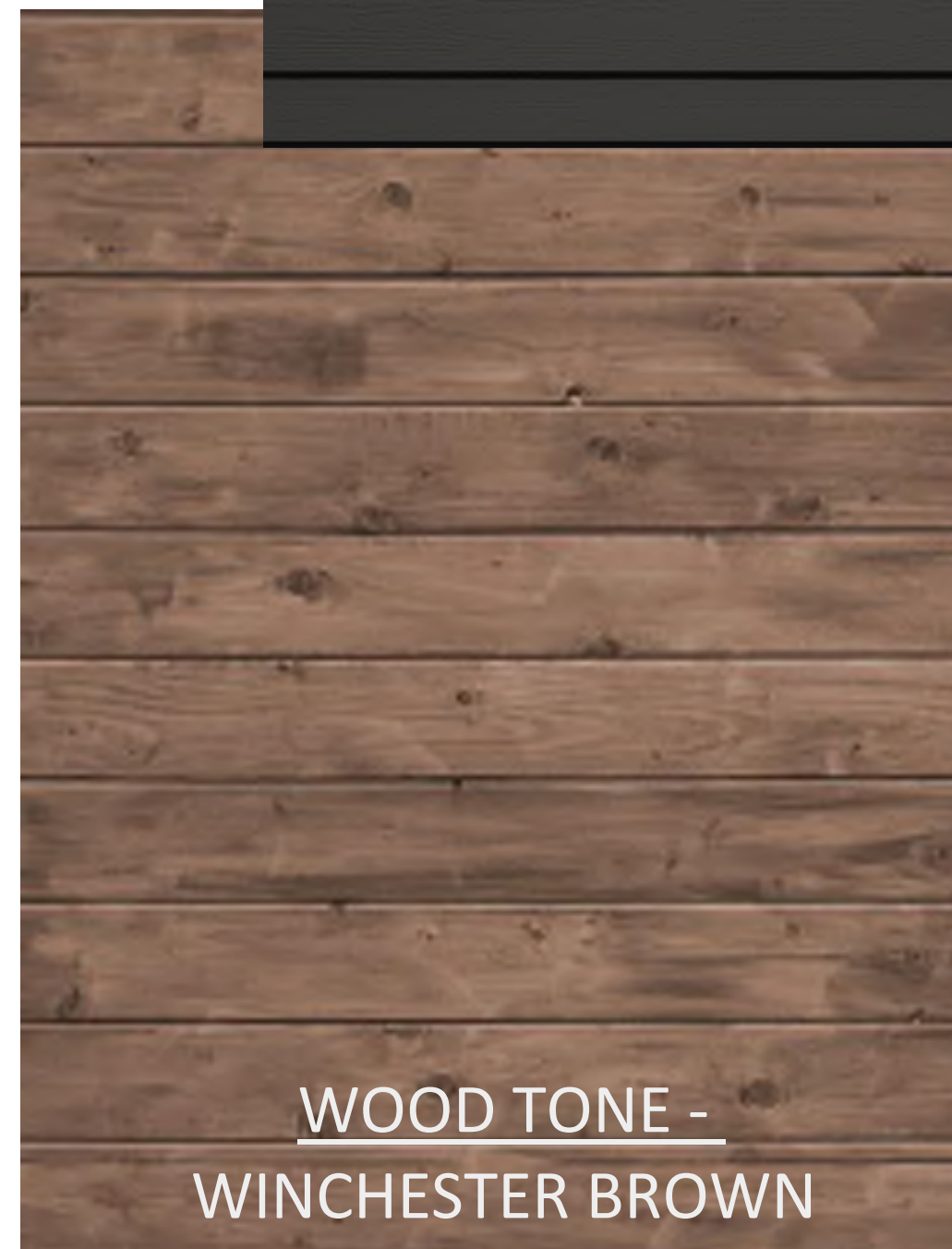
JAMES HARDIE - GRAY SLATE



JAMES HARDIE - IRON GRAY



CAST STONE -
REISLING



WOOD TONE -
WINCHESTER BROWN



SUMMIT BRICK - DOVE

PROJECT TITLE
The Kronenberg

423-427 W. Mifflin St.,
Madison, WI
SHEET TITLE
Material Board

SHEET NUMBER

AC900

PROJECT NUMBER

2253

EXTERIOR MATERIAL SCHEDULE			
MARK	BUILDING ELEMENT	MANUFACTURER	COLOR
01	COMPOSITE LAP SIDING - ALTERNATING	JAMES HARDIE	IRON GRAY
02	COMPOSITE LAP SIDING - ALTERNATING	JAMES HARDIE	GRAY SLATE
03	COMPOSITE LAP SIDING - 6"	JAMES HARDIE	WOOD TONE - WINCHESTER BROWN
04	BRICK VENEER	SUMMIT BRICK	DOVE
05	BRICK SOLDIER COURSE	SUMMIT BRICK	DOVE
06	CAST STONE	ROCKCAST	REISLING
07	COMPOSITE TRIM	JAMES HARDIE	MATCH ADJ.
08	ALUMINIUM STOREFRONT	N/A	BLACK
09	RAILINGS & HANDRAILS	SUPERIOR	BLACK
10	COMPOSITE WINDOWS	ANDERSEN	BLACK



Concept Image



Concept Image



Concept Image



Concept Image

Thank you.

