

# LANDMARKS COMMISSION APPLICATION

LC

Complete all sections of this application, making sure to note the requirements on the accompanying checklist (reverse).

If you need an interpreter, translator, materials in alternate formats or other accommodations to access these forms, please call (608) 266-4635

City of Madison  
Planning Division  
215 Martin Luther King Jr Blvd, Ste 017  
PO Box 2985  
Madison, WI 53701-2985  
(608) 266-4635



## 1. LOCATION


Project Address: 946 Jenifer St Aldermanic District: 6

## 2. PROJECT

Project Title/Description: Swan ADU and Garage

This is an application for: (check all that apply)

- New Construction/Alteration/Addition in a Local Historic District or Designated Landmark (specify)\*\*:**
  - Mansion Hill       Third Lake Ridge       First Settlement
  - University Heights       Marquette Bungalows       Landmark
- Land Division/Combination in a Local Historic District or to Designated Landmark Site (specify)\*\*:**
  - Mansion Hill       Third Lake Ridge       First Settlement
  - University Heights       Marquette Bungalows       Landmark
- Demolition**
- Alteration/Addition to a building adjacent to a Designated Landmark**
- Variance from the Historic Preservation Ordinance (Chapter 41)**
- Landmark Nomination/Rescission or Historic District Nomination/Amendment**  
(Please contact the Historic Preservation Planner for specific Submission Requirements.)
- Other (specify):**

DPCED USE ONLY	Registrar #:
	<b>DATE STAMP</b>  7/22/22 6:58 am
	<b>Preliminary Zoning Review</b> Zoning Staff Initial: Date:      /      /

## 3. APPLICANT

Applicant's Name: Philip Ashby Company: Madhouse Architect

Address: 221 N Hillside Ter Madison WI 53705  
Street City State Zip

Telephone: 608-446-4042 Email: philip@madhousearchitect.com

Property Owner (if not applicant): Barbara Swan

Address: 946 Jenifer St  
Street City State Zip

Property Owner's Signature:  Date: \_\_\_\_\_  
Barbara Swan (Jul 18, 2022 13:15 CDT)

NOTICE REGARDING LOBBYING ORDINANCE: If you are seeking approval of a development that has over 40,000 square feet of non-residential space, or a residential development of over 10 dwelling units, or if you are seeking assistance from the City with a value of \$10,000 (including grants, loans, TIF or similar assistance), then you likely are subject to Madison's lobbying ordinance (Sec. 2.40, MGO). You are required to register and report your lobbying. Please consult the City Clerk's Office for more information. Failure to comply with the lobbying ordinance may result in fines.

## 4. APPLICATION SUBMISSION REQUIREMENTS (see checklist on reverse)

All applications must be filed by 12:00 pm on the submission date with the Preservation Planner. Applications submitted after the submission date or incomplete applications will be postponed to the next scheduled filing time. Submission deadlines can be viewed here: [https://www.cityofmadison.com/dpced/planning/documents/LC\\_Meeting\\_Schedule\\_Dates.pdf](https://www.cityofmadison.com/dpced/planning/documents/LC_Meeting_Schedule_Dates.pdf)



Philip Ashby, AIA  
Madhouse Architect  
221 N Hillside Ter  
Madison, WI 53705

July 22, 2022

Landmarks Commission  
215 Martin Luther King Jr. Blvd  
Madison, WI 53705

Dear Landmarks Commission,

This submission is seeking approval for a replacement garage within a new accessory dwelling unit (ADU), located at 946 Jenifer St. in the Third Lake Ridge historic district. The property is the residence of Barbara Swan who also owns the adjacent property at 948 Jenifer St. There is shared driveway (Right-of-way) between these properties and the current garage is located approximately 6' onto the 948 Jenifer St. property.

Our proposal is to demolish the current garage and replace it with a code compliant building on the 946 Jenifer St property. The new building will be located further back in the yard for better vehicular garage access and rear yard parking for both properties.

We are proposing an ADU space below the garage that is accessible from a sunken patio at the rear of the building. This additional function of the building will enhance the owner's use of the backyard and provide additional living space for friends and family.

The architectural style of the garage will complement the house with a hip roof, traditional applied stucco siding, and a matching color palette. The house was recently renovated in 2020 with approval of the Landmarks commission. The approval included new windows, doors, roofing, and siding.

Below is the scope of work to fulfill our proposal.

- Demo existing two car garage, driveway, and rear yard parking surface
- Replace the garage with a building that includes a two-car garage and an ADU below
- Replace driveway and rear yard parking surface
- Add exterior stairs to gain access to ADU and patio

Thank you for your considerations and if you need more information and/or clarification of this submission please contact me.

Philip Ashby, AIA

Enclosures: Photos of Existing Conditions, Architectural Drawings, Spec sheets

CC: Architectural Building Arts, Inc.

## Photos of Existing Conditions



946 Jenifer St house



Shared driveway to garage



Existing garage



Existing garage (North)



Existing garage (South)



Existing garage (West)



Spatial relationship between garage and 948 Jenifer St House



Rear view of 948 Jenifer house



Main House side entry door



07.22.22

**SWAN ADU**  
946 JENIFER STREET  
MADISON WISCONSIN 53703

ARCHITECTURAL  
BUILDING  
ARTS  
DESIGN/BUILD  
GENERAL CONTRACTING

  
**MADHOUSE**  
ARCHITECT

SHEET 1 OF 5

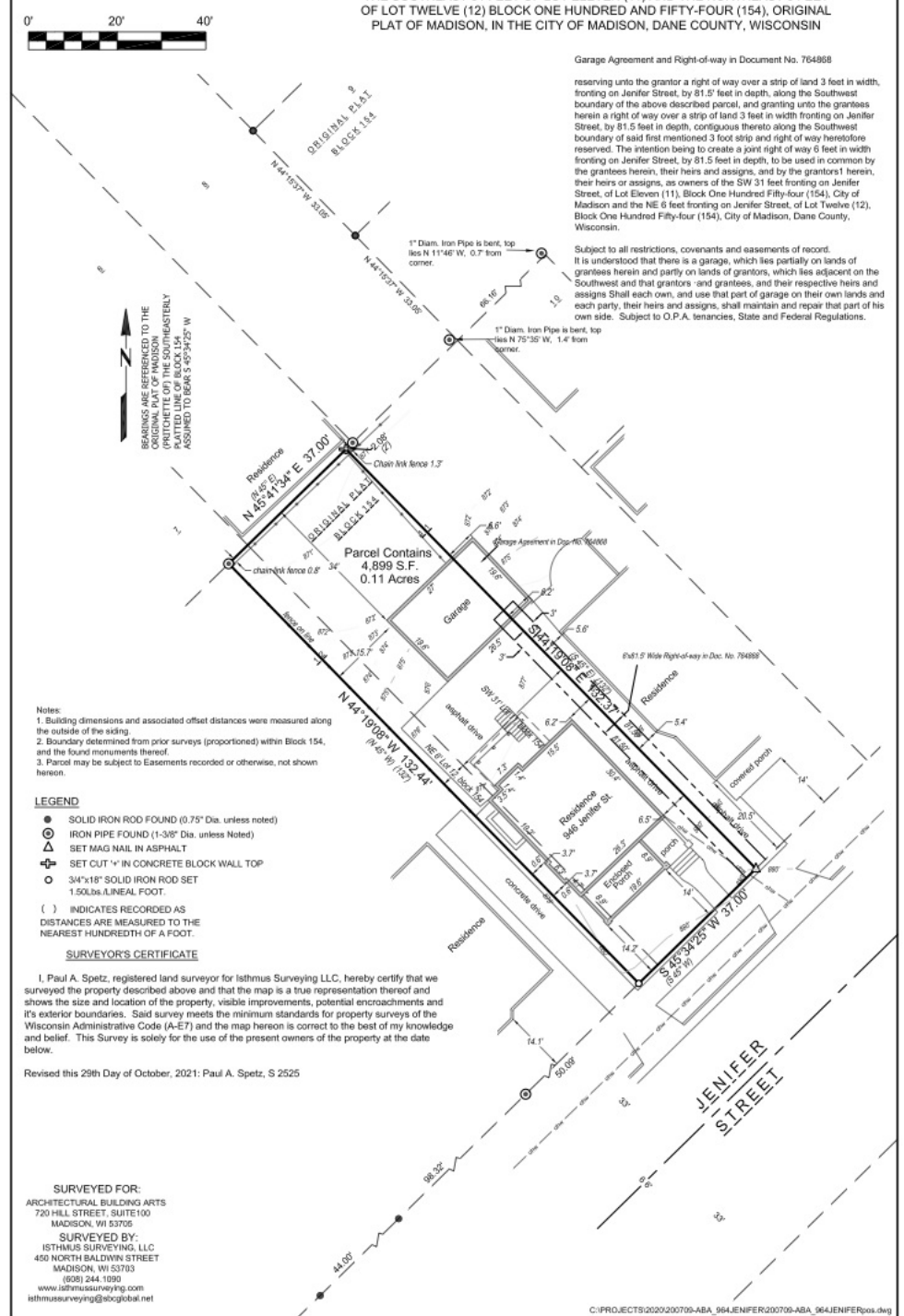
720 Hill Street  
Madison, Wisconsin 53704  
608.233.2106

designbuildmadison.com

# Plat of Survey

Legal Description of Record: Document No. 3963611

THE SOUTHEAST 31 FEET OF LOT ELEVEN (11) AND THE NORTHEAST 6 FEET OF LOT TWELVE (12) BLOCK ONE HUNDRED AND FIFTY-FOUR (154), ORIGINAL PLAT OF MADISON, IN THE CITY OF MADISON, DANE COUNTY, WISCONSIN



- Notes:
1. Building dimensions and associated offset distances were measured along the outside of the siding.
  2. Boundary determined from prior surveys (proportioned) within Block 154, and the found monuments thereof.
  3. Parcel may be subject to Easements recorded or otherwise, not shown hereon.

- LEGEND
- SOLID IRON ROD FOUND (0.75" Dia. unless noted)
  - IRON PIPE FOUND (1-3/8" Dia. unless noted)
  - ▲ SET MAG NAIL IN ASPHALT
  - ⊕ SET OUT 1" IN CONCRETE BLOCK WALL TOP
  - 3/4"x18" SOLID IRON ROD SET 1.50lbs LINEAL FOOT.
  - ( ) INDICATES RECORDED AS DISTANCES ARE MEASURED TO THE NEAREST HUNDREDTH OF A FOOT.

**SURVEYOR'S CERTIFICATE**

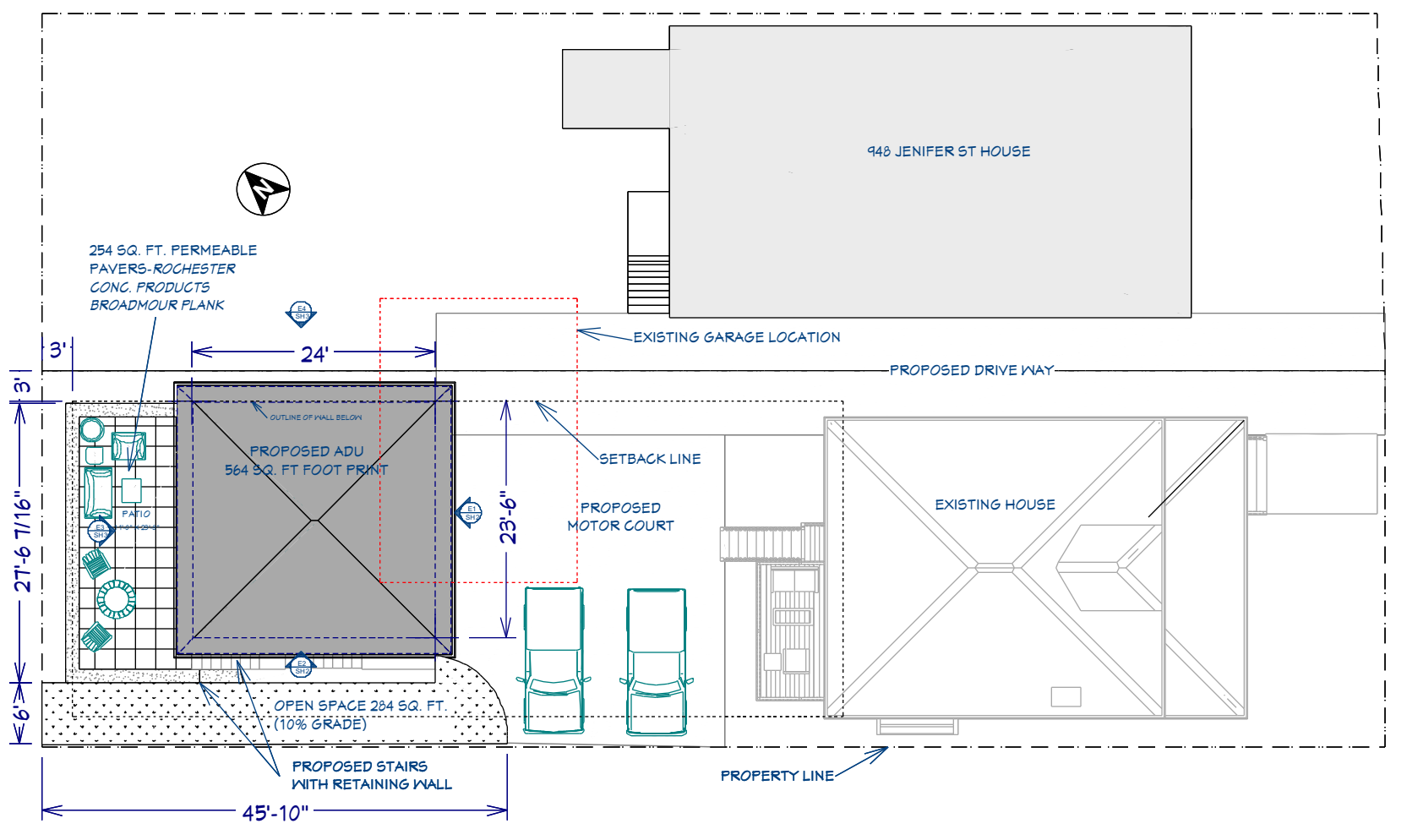
I, Paul A. Spetz, registered land surveyor for Isthmus Surveying LLC, hereby certify that we surveyed the property described above and that the map is a true representation thereof and shows the size and location of the property, visible improvements, potential encroachments and its exterior boundaries. Said survey meets the minimum standards for property surveys of the Wisconsin Administrative Code (A-E7) and the map hereon is correct to the best of my knowledge and belief. This Survey is solely for the use of the present owners of the property at the date below.

Revised this 29th Day of October, 2021: Paul A. Spetz, S 2525

**SURVEYED FOR:**  
ARCHITECTURAL BUILDING ARTS  
720 HILL STREET, SUITE 100  
MADISON, WI 53706

**SURVEYED BY:**  
ISTHMUS SURVEYING, LLC  
450 NORTH BALDWIN STREET  
MADISON, WI 53703  
(608) 244.1090  
www.isthmussurveying.com  
isthmussurveying@icgglobal.net

C:\PROJECTS\2020\200705-ABA\_964JENIFER\200705-ABA\_964JENIFER.plt.dwg



## PROPOSED SITE PLAN

SCALE 1/16" = 1'-0"

**ZONING:** HIS-TL,TR-V1

**TOTAL LOT AREA:** 4884 SQ. FT.

**TOTAL LOT COVERAGE:** 3140 SQ. FT. ( HOUSE 1169 SQ. FT., ADU 564 SQ. FT., HARDSCAPE 1407 SQ. FT.)

**TOTAL OPEN SPACE:** 538 SQ. FT. (REAR YARD)

07.22.22

**SWAN ADU**  
946 JENIFER STREET  
MADISON WISCONSIN 53703

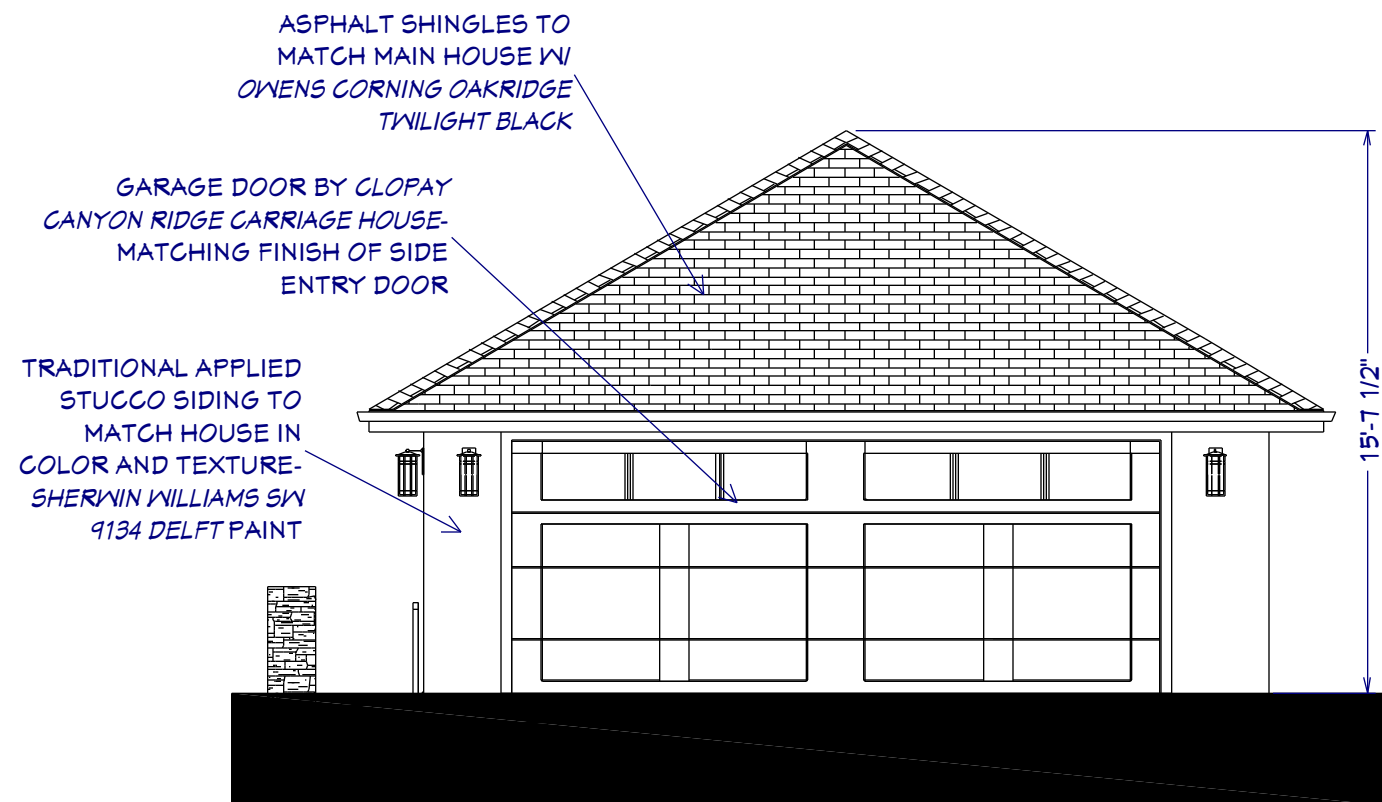
ARCHITECTURAL  
BUILDING  
ARTS  
DESIGN/BUILD  
GENERAL CONTRACTING

**MADHOUSE**  
ARCHITECT

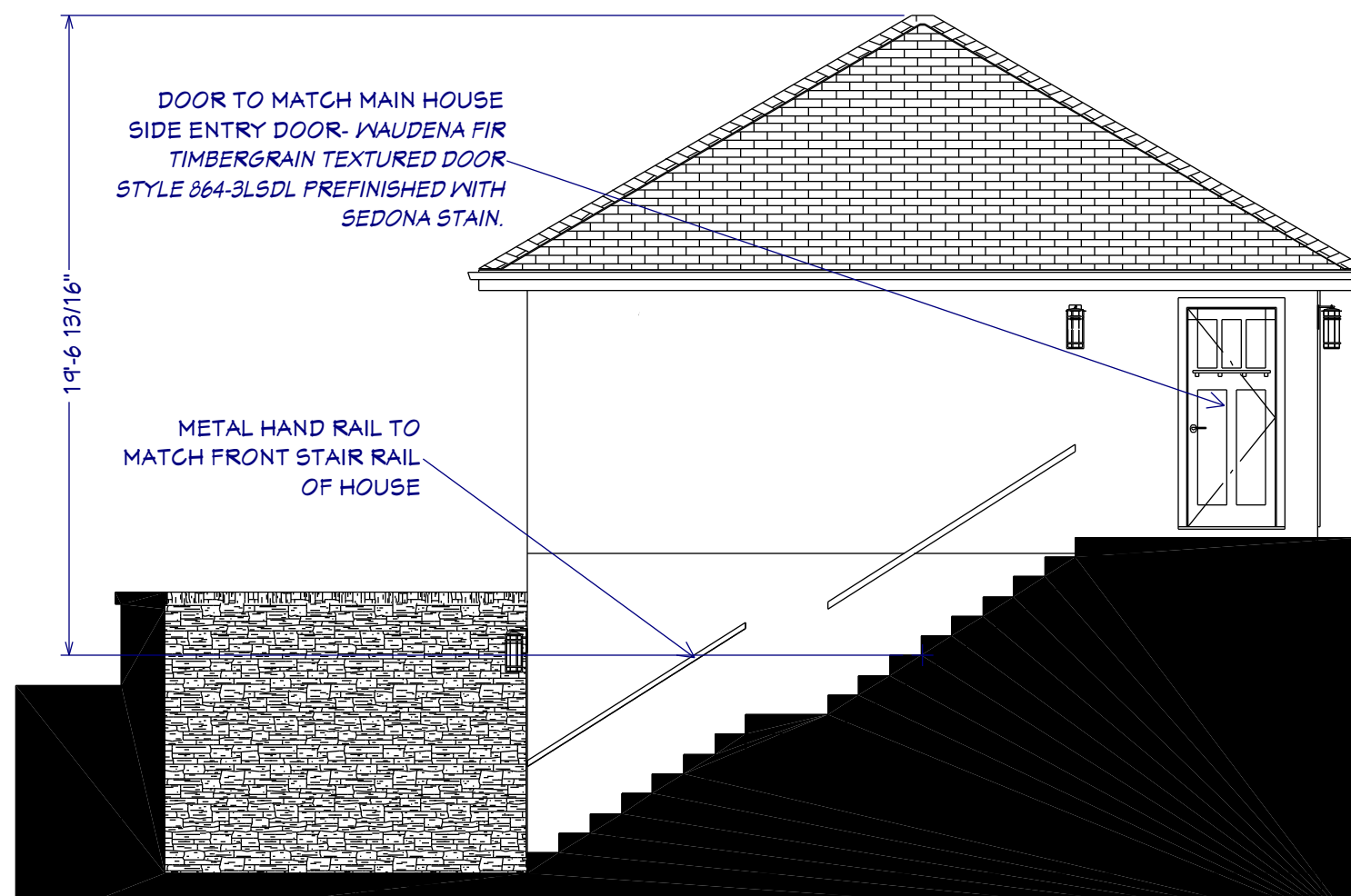
SHEET 2 OF 5

720 Hill Street  
Madison, Wisconsin 53704  
608.233.2106

designbuildmadison.com



(E1) ELEVATION 1  
3/16 in = 1 ft



(E2) ELEVATION 2  
3/16 in = 1 ft

07.22.22

**SWAN ADU**  
946 JENIFER STREET  
MADISON WISCONSIN 53703

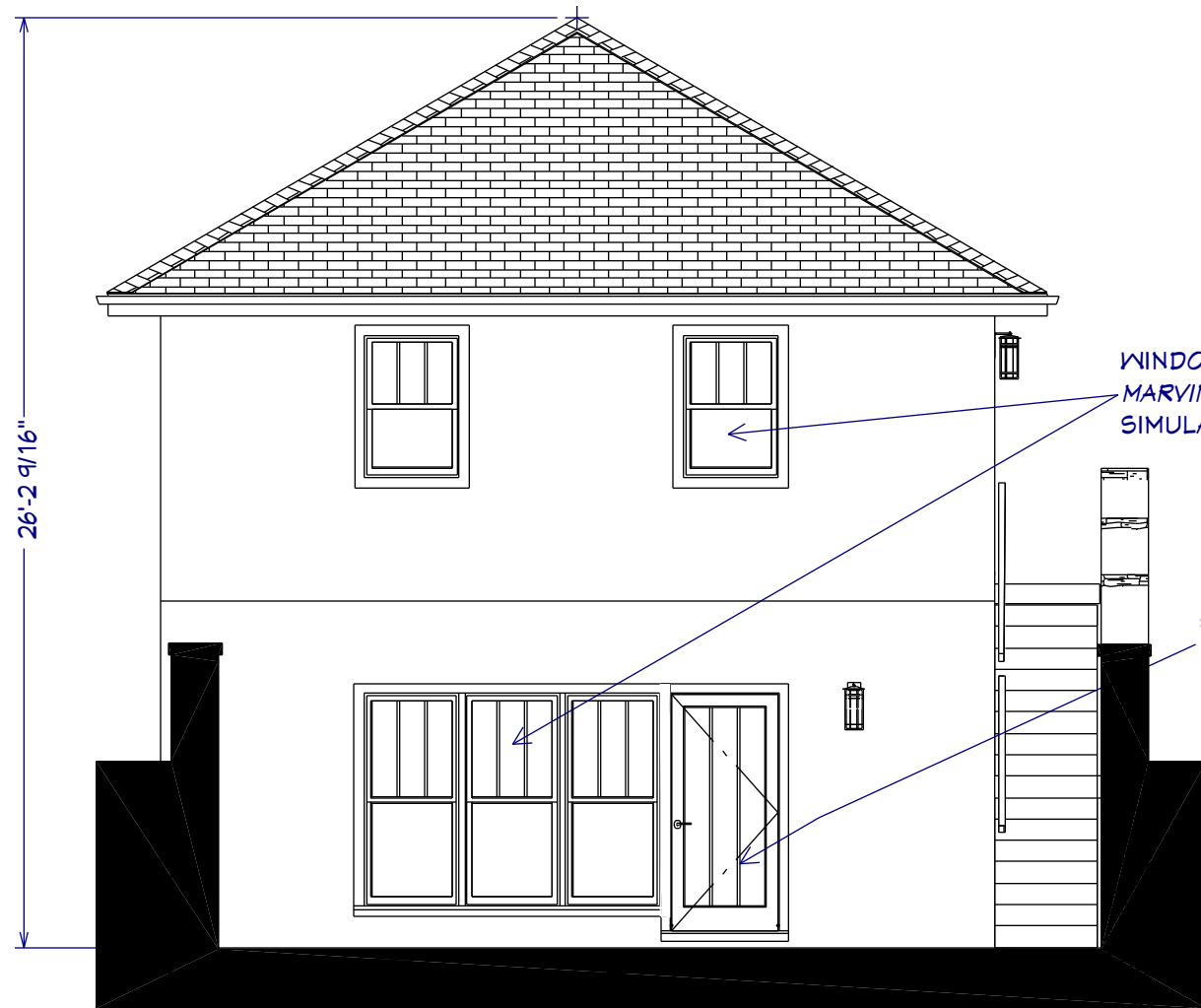
ARCHITECTURAL  
BUILDING  
ARTS  
DESIGN/BUILD  
GENERAL CONTRACTING

  
**MADHOUSE**  
ARCHITECT

SHEET 3 OF 5

720 Hill Street  
Madison, Wisconsin 53704  
608.233.2106

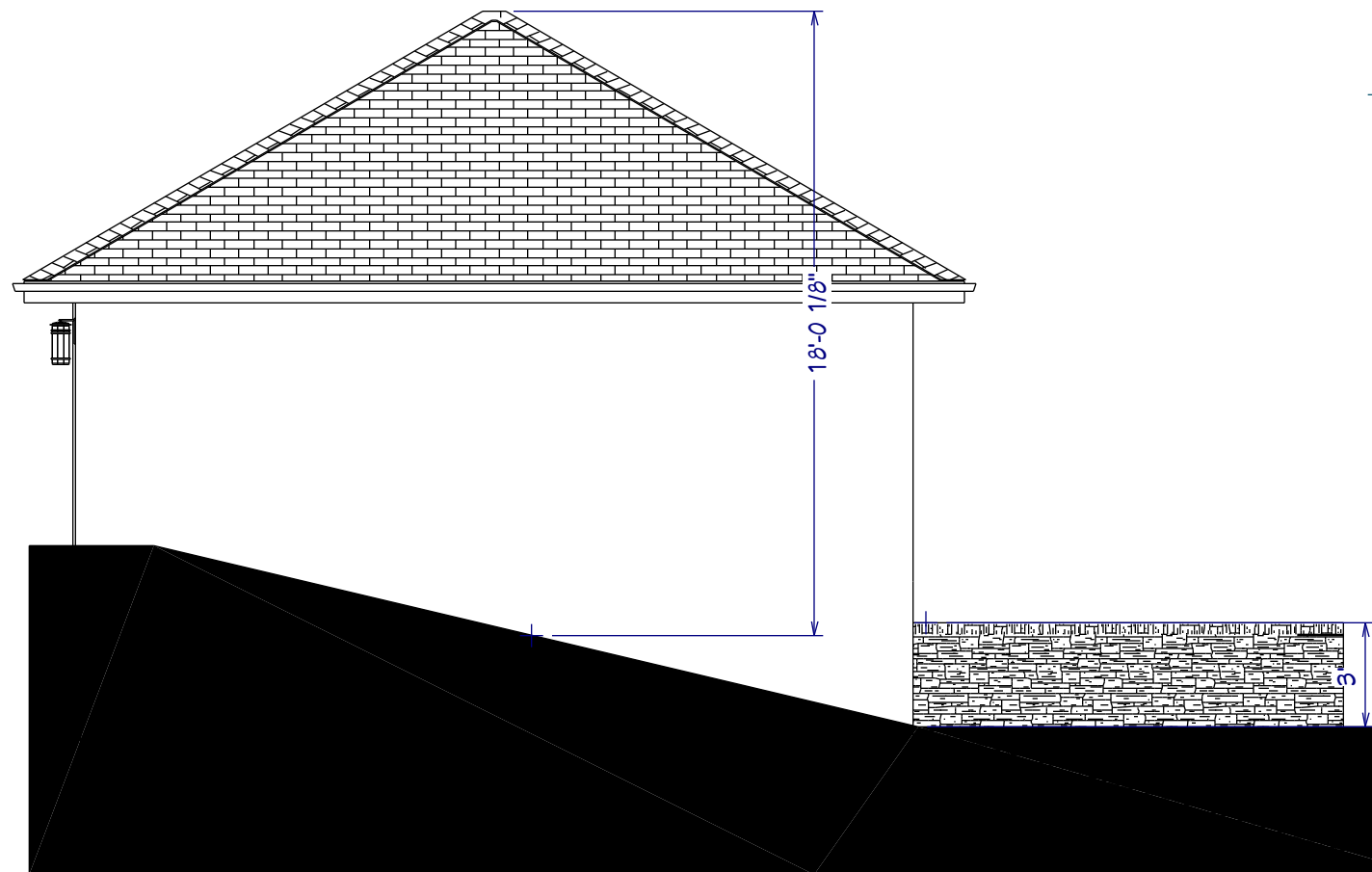
designbulldmadison.com



WINDOWS TO MATCH MAIN HOUSE-  
MARVIN SIGNATURE WINDOWS WITH  
SIMULATED DIVIDED LITES

FULL LITE ENTRY DOOR-  
MARVIN TRUSTILE

**E3** ELEVATION 3  
3/16 in = 1 ft



**E4** ELEVATION 4  
3/16 in = 1 ft

07.22.22

**SWAN ADU**  
946 JENIFER STREET  
MADISON WISCONSIN 53703

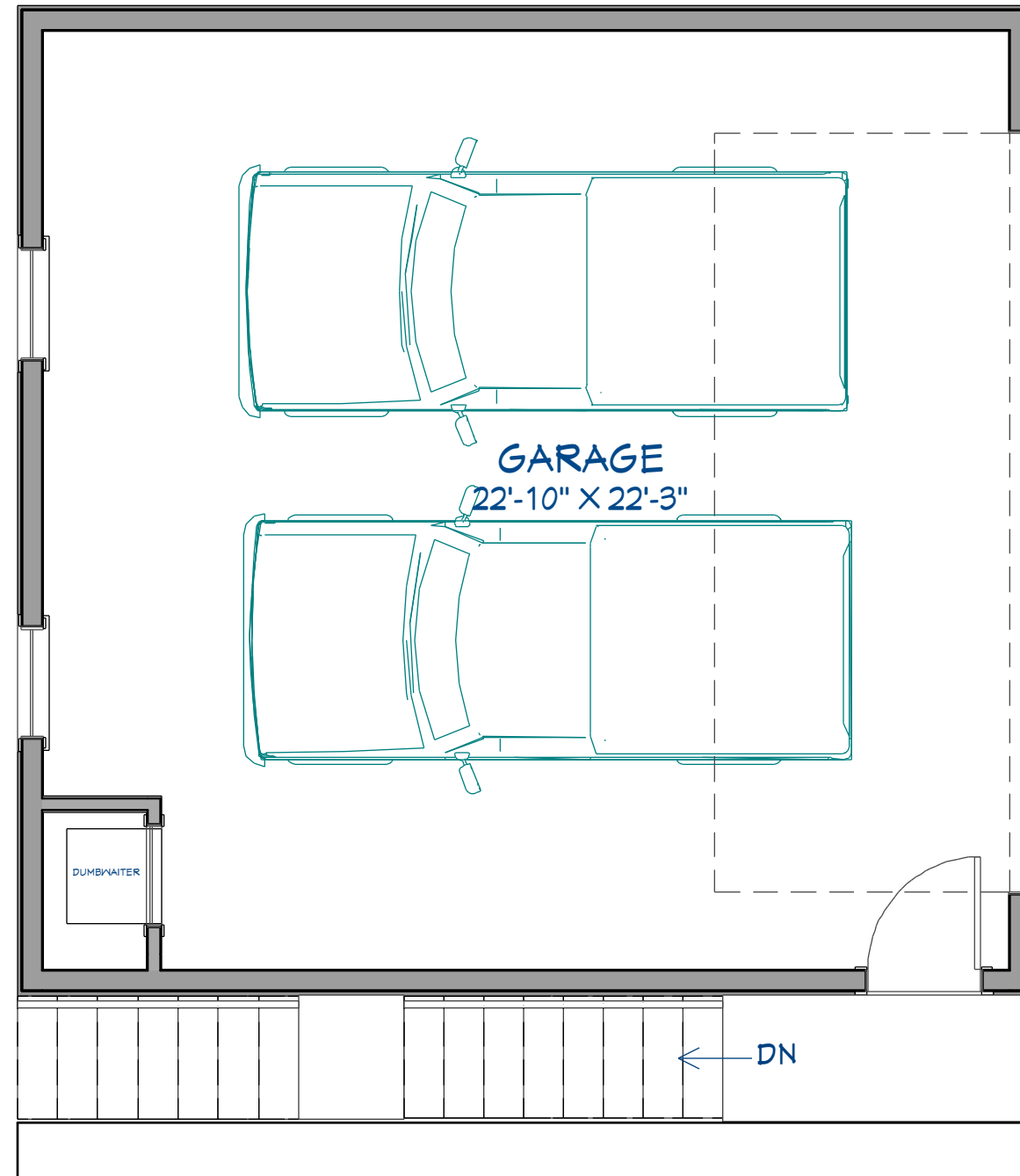
ARCHITECTURAL  
BUILDING  
ARTS  
DESIGN/BUILD  
GENERAL CONTRACTING

  
**MADHOUSE**  
ARCHITECT

SHEET 4 OF 5

720 Hill Street  
Madison, Wisconsin 53704  
608.233.2106

designbulldmadison.com



**GARAGE LEVEL PLAN**

SCALE 1/4" = 1'-0"

07.22.22

**SWAN ADU**  
946 JENIFER STREET  
MADISON WISCONSIN 53703

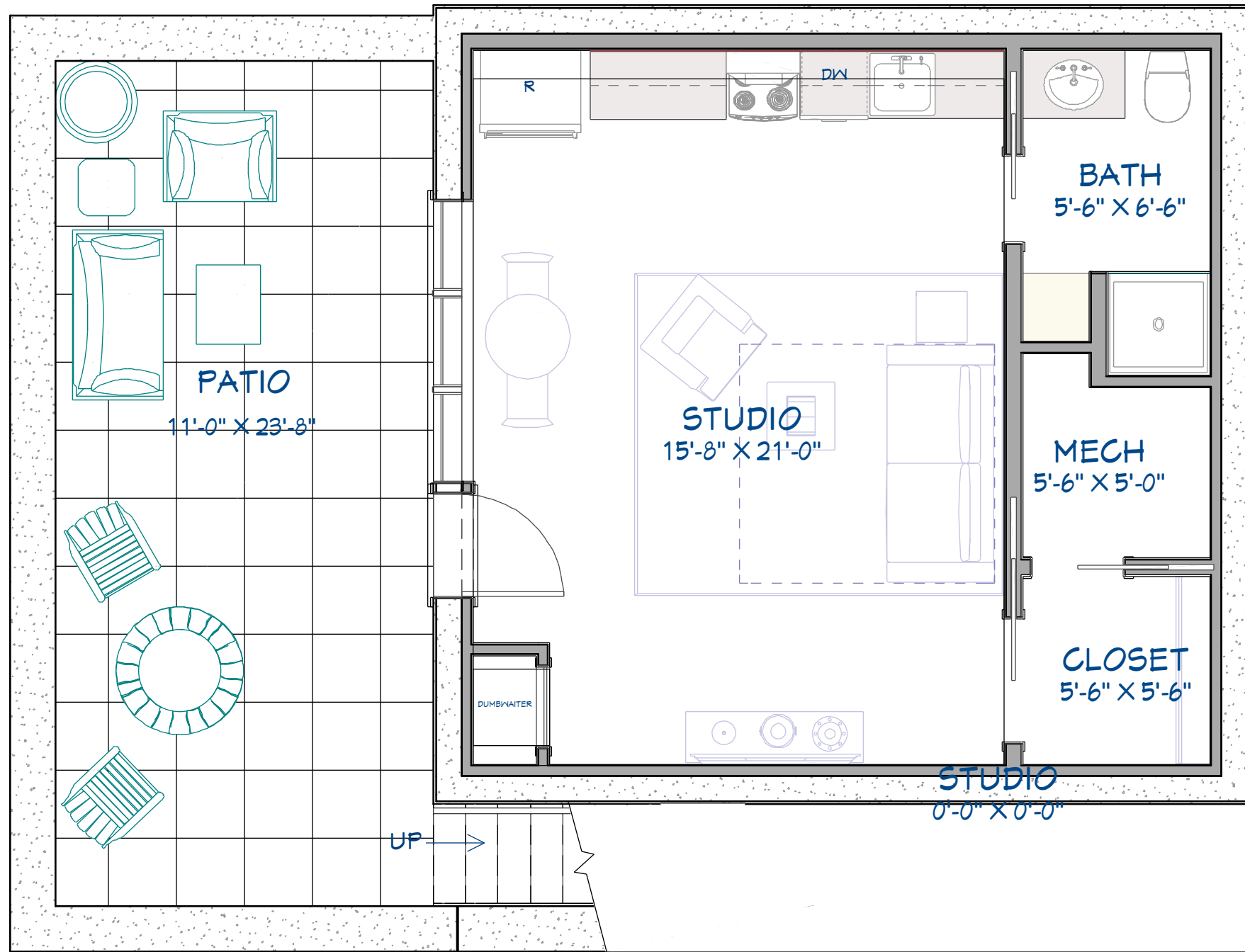
ARCHITECTURAL  
BUILDING  
ARTS  
DESIGN/BUILD  
GENERAL CONTRACTING

  
**MADHOUSE**  
ARCHITECT

SHEET 5 OF 5

720 Hill Street  
Madison, Wisconsin 53704  
608.233.2106

designbulldmadison.com



**ADU LEVEL PLAN**

SCALE 1/4" = 1'-0"

CANYON RIDGE®

# CARRIAGE HOUSE

---

Inspired by coach houses of a bygone era, Canyon Ridge® Carriage House garage doors add character and charm to any style home — from traditional exteriors to modern farmhouses. Designed to look like genuine swing out carriage house doors, but built to suit the modern-day lifestyle with modern upward operation.

# CARRIAGE HOUSE 5-LAYER CONSTRUCTION

- 5-layer, faux-wood doors with Intellicore® polyurethane insulation. 20.4 R-value.
- Multiple door designs and window options. Many custom designs also available. See your Clopay Dealer for more information.
- Insulated glass options include clear, frosted, seeded, rain and obscure. See page 20 for specialty glass options.
- Attractive beveled edge, clip-in window grilles are removable for easy cleaning.
- Replaceable vinyl bottom weatherseal in a rust-resistant aluminum retainer helps seal out the elements.
- 10-ball nylon rollers for quiet operation.
- Heavy-duty 14 gauge steel hinges for long-lasting performance.
- Clopay's Safe-T-Bracket® prevents serious injury that could occur if the bottom bracket were removed with the garage door closed and under tension.
- Comes complete with spade lift handles and step plates. See page 21 for details.



Design 01



Design 22



Design 34

Doors designs shown in Dark Finish with Clear Cypress cladding and Clear Cypress overlay. Design 01 does not have an overlay.



**5**  
LAYER  
CONSTRUCTION

- 1 COMPOSITE OVERLAY
- 2 COMPOSITE CLADDING
- 3 STEEL
- 4 2" INTELICORE® POLYURETHANE INSULATION
- 5 STEEL



**2"**  
POLYURETHANE  
INSULATION

R-VALUE  
**20.4**

COMPOSITE OVERLAY  
DELAMINATION  
**LIMITED  
5 YR  
WARRANTY**

HARDWARE  
**LIMITED  
5 YR  
WARRANTY**

Calculated door section R-value is in accordance with DASMA TDS-163.

## COLORS



Medium Finish



Dark Finish



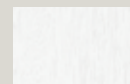
Walnut Finish



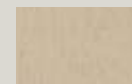
Slate Finish



Black Finish\*



White Finish\*



Primed (No Finish)

\*Black and White Finish available only on Mahogany cladding and overlays. Two-tone doors are available. To see all available options go to: [dls.clopay.com](http://dls.clopay.com). Doors can be ordered primed for those homeowners wishing to custom paint or stain their doors.

Door stain color will vary slightly within a door due to finishing process. Due to the printing process, above colors may vary. To request a color sample, visit [www.clopaydoor.com/requestcoloursamples](http://www.clopaydoor.com/requestcoloursamples).



**COLOR BLAST®**

Color Blast® finish offers more than 1,500 Sherwin-Williams® color options to complement your home. Clopay's durable two-part paint system has been thoroughly tested and is backed by a five-year warranty.



Design 11



Design 12



Design 13



Design 21



Design 23



Design 31



Design 32



Design 33



Design 35



Design 36



Design 37



Design 38

## WINDOW/TOP SECTIONS



REC11



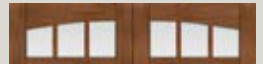
REC13



SQ23



ARCH3



ARCH13



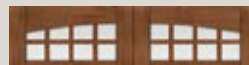
ARCH1



REC14



SQ24



ARCH4



ARCH14



TOP11



TOP12



TOP13



ARCH1

Window grilles are Clear Cypress texture. Windows not available on Designs 31, 32, 33, 34, 35, 36, 37 and 38.

Standard windows available on the following widths only: 6'2", 8'0", 9'0", 10'0", 10'2", 12'0", 12'2", 13'6", 15'0", 15'2", 15'6", 15'8", 16'0", 16'2", 18'0", 18'2", 20'0", 20'2".

Impact windows available on the following widths only: 8'0", 9'0", 10'0", 12'2", 16'2", 18'2". To view additional designs, windows and top sections available, please visit [www.clopaydoor.com](http://www.clopaydoor.com).

## MATERIAL DESIGN OPTIONS

### COMPOSITE CLADDING MATERIALS



Clear Cypress (C)



Mahogany (M)

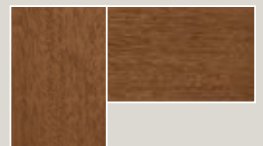


Pecky Cypress (P)

### COMPOSITE OVERLAY MATERIALS



Clear Cypress (C)



Mahogany (M)

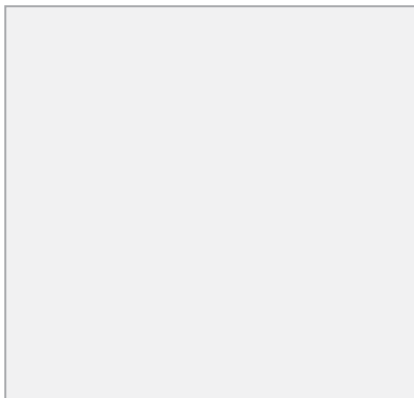
Note: Cladding and overlay material options may be mixed and matched.



# specialty GLASS OPTIONS

Insulated windows are available in rectangular, square and arched designs. Insulated tempered glass is standard. Insulated frosted, seeded, obscure and rain glass is also available on select door models.

*Attractive beveled edge, clip-in grilles are removable for easy cleaning.*



Clear



Frosted



Seeded\*



Obscure



Rain

*\*Seeded is not available on Canyon Ridge® Modern window options. Additional charges for optional glass apply.*

**Unit Features****Ultimate Double Hung G2 Collection:**

Ultimate Single Hung G2: USHG2

Ultimate Double Hung G2: UDHG2

Ultimate Double Hung Picture G2: UDHP G2

Ultimate Double Hung Transom G2: UDHTR G2

Ultimate Double Hung Bows and Bays G2: UDHBB G2

Ultimate Double Hung -G2 IZ3: UDH G2 IZ3

Ultimate Double Hung Picture G2 IZ3: UDHP G2 IZ3

Ultimate Double Hung Transom G2 IZ3: UDHTR G2 IZ3

*NOTE: Ultimate Double Hung Bows and Bays G2, Ultimate Double Hung G2 IZ3, Ultimate Double Hung Picture G2 IZ3, and Ultimate Double Hung Transom G2 IZ3 are not available with CE mark.*

**Frame:**

- Frame thickness:
  - 11/16" (17) thick at head and jambs
  - 1 13/32" (36) thick at sill
- Frame Width: 4 9/16" (116)

**Sash:**

- Operating / Stationary Sash (Single Hung, Double Hung, Transom):
  - Sash thickness: 1 3/4" (44), corner slot and tenoned
  - Top rail height: 2 13/32" (61)
  - Stiles width: 1 21/32" (42)
  - Bottom rail height (operating): 3 1/4" (83)
  - Bottom rail height (transom): 2 3/4" (70)
- Stationary Picture Sash:
  - Sash thickness: 1 3/4" (44), corner slot and tenoned
  - Top rail height: 2 13/32" (61)
  - Stile width: 2 13/32" (61)
  - Bottom rail height: 3 1/4" (83)
- Optional CW (Commercial Window) certified product
- Sash Options
  - Standard: Equal
  - Optional: Unequal, Both Sash Stationary
- Standard exterior cope profile: Putty
- Standard interior wood cope sticking: Ogee
- Optional interior wood cope sticking: Square

## Unit Features

### Glass and Glazing:

- Glazing method: Insulating - Dual Pane or Tri Pane
- Glazing seal: Silicone glazed
- Standard glass is Insulating Low E2 Argon or air
- Optional dual-pane glass make-ups:
  - Low E1 Argon or Air,
  - Low E3 Argon or Air,
  - Low E2/ERS Argon or Air,
  - Low E3/ERS Argon or air, Laminated, Tempered, Obscure, Bronze tint, Gray tint, Green tint, Reflective Bronze and decorative glass options
- Optional Tri Pane glass make-ups:
  - Low E2/E1 Argon or Krypton-Argon, or Air
  - Low E3/E1 Argon or Krypton-Argon, or Air
  - Low E1 Argon, Krypton-Argon, or Air
- Available glass types:
  - Laminated
  - Tempered
  - Obscure
  - Clear
- Tints
  - Bronze
  - Gray
  - Green
  - Reflective Bronze
- Decorative glass options:
  - Frost
  - 1/2 English Reed
  - Rain
  - Sandblasted
  - Glue Chip
- Glazing will be altitude adjusted for higher elevations with capillary tubes. Argon, Argon-Krypton, and Krypton gas not included
- IZ3 has annealed exterior pane is default with the option to temper
- CUDHP-NG 2.0 IZ3 product requires tempered glass on units above a glass square footage of 33.1.
- Egress may be affected when selecting specialty glass, please contact your Marvin representative
- For additional specialty glazing options, please contact your Marvin representatives.

### CE Optional Glazing:

- Glazing method: Insulating
- Glazing seal: Silicone glazed
- Standard glass is 7/8" (22) insulating Low E2 Argon or air
- Optional dual glazing available: Low E1 Argon or air, Low E3 Argon or air, Low E2/ERS argon or air, Low E3/ERS Argon or air, clear, laminated clear and tints, tempered, sandblasted
- Optional Tripane glass types: Low E1/E1 Argon or Krypton-Argon, Low E2/E2 Argon or Krypton-Argon, Low E3/E1 Argon or Krypton-Argon
- Glass panes available in 3, 4, and 6 mm thicknesses
- Laminated panes available in 7.0 and 7.8 mm thicknesses
- Glazing will be altitude adjusted for higher elevations, Argon, Argon-Krypton, and Krypton gas not included

## Unit Features

### Weather Strip:

- Operating units:
  - Jambs: Foam-filled bulb
    - Color: beige, black, and white
  - Head Jamb: Continuous dual leaf
    - Color: beige, black, and white
  - Check rail: Hollow bulb
    - Color: beige, black, and white
  - Bottom rail: Hollow bulb
    - Color: black
- Picture units:
  - Jambs: Foam
  - Header and bottom rail: Hollow bulb

### Hardware:

- Locking system that provides locking, unlocking, balancing, and tilting of the sash members. Lock automatically locks when both sash are closed.
- Lock Actuator Assembly:
  - Material
    - Zinc die cast
    - Standard finish: Satin Taupe
    - Optional finish: White, Bronze, Matte Black, Brass, Antique Brass, Polished Chrome, Satin Chrome, Oil Rubbed Bronze, or Satin Nickel
  - Design features or components
    - To unlock the unit, turn the handle 135°
    - To lock the unit, both sash must be moved to the closed position
    - To tilt the bottom sash for wash-mode, the bottom sash must be open; push the button on top of lock handle and rotate the handle 180°
    - To tilt the top sash for wash-mode, the bottom sash must be tilted and/or removed from frame; lower the top sash to a good working height, retract the tilt latches on the top rail and tilt sash out of the frame
  - Options
    - Non-tilt hardware is standard on units with performance brackets
    - Custodial hardware colors: satin taupe, white, bronze, matte black
- Lift Lock (Option for Single Hung Only)
  - Available with one or two locks
  - Lift lock handle assembly is integrated into the bottom rail of the sash and controls locking, unlocking and facilitates operation of the bottom sash.
  - Two locks are not available on sash less than CN26 width
  - Material
    - Zinc die-cast
  - Finishes
    - Lift and Escutcheon components - Bronze, Satin Taupe, White, Matte Black, Oil Rubbed Bronze, Antique Brass, Brass, Polished Chrome, Satin Chrome, Satin Nickel
    - Sill Strike: White, Black, Beige
- Latches
  - Bottom sash latch, top sash tilt latch
  - Latches accommodate locking/un-locking, travel of sash in frame, and tilting into wash-mode
  - Injection-molded plastic
  - Color: beige
- Cord guide assembly
  - Injection-molded plastic and die-cast zinc
  - One cord guide inserted into bottom check rail
  - Cord guide is driven by lock handle, accounts for cord travel to retract latches
  - Plunger drives auto-lock feature to lock position when both sash are closed
- Strike Assembly
  - Zinc die-cast strike plate and injection-molded Acetal housing and button
  - Strike assembly accommodates locking/unlocking

**Unit Features**

- Balance system
  - Block & tackle balance
  - Hybrid spiral balance

*Balance type is dependent on sash weight. Unit size, glass type, and options can all impact sash weight. General balance selection is as follows (some exceptions exist based on unit size):*

Sash	Sash Weight	Balance Tube Type
Top	up to 35 lbs	Block and Tackle
	>35 lbs	Hybrid Spiral
Bottom	up to 30.6 lbs	Block and Tackle
	>30.6 lbs	Hybrid Spiral

- Sash Limiter
  - Bottom sash limiter:
    - Available on all operator configurations, and IZ3
    - Selectable bottom sash locations, 4", 6" or 8" Net Clear Opening (NCO)
    - Non-tilt hardware is default, and a sash removal tool is required in order to by-pass the Sash limiter for sash removal (tilt wash mode)
    - Standard application is factory applied. Available for retrofit applications.
    - Color: Will align with the Interior Weather Strip Package selection
  - Top Sash Limiter
    - Available on all operator configurations, with the exception Single Hung configurations. This includes IZ3
    - Selectable bottom sash locations, 4", 6" or 8" Net Clear Opening (NCO)
    - Standard application is factory applied. Available for field applications
    - Color: Will align with the Exterior Weather Strip Package selection
- Optional factory applied Window Opening Control Device is available on operating units.
  - Two devices will be applied to each window and will default color match the lock handle color.
  - WOCD is a device consisting of a zinc lever housed in a zinc shell on the top sash stile of the secondary sash and an acetal stop on the bottom check rail of the primary sash.
  - Color: Satin Taupe, White, Bronze, Matte Black, Brass, Antique Brass, Polished Chrome, Satin Chrome, Oil Rubbed Bronze, and Satin Nickel.
  - This device works in accordance to ASTM F2090-17 Standard Specification for Window Fall Prevention Devices with Emergency Escape (Egress) Release Mechanisms.
- Exterior Sash Lugs - Standard Option
  - Standard Profile: Ogee
  - Available on Top Sash
  - Color: Available in all exterior clad color options
    - Color shall be the same as top sash clad color
  - Standard application is factory applied. Available for field applications
- Optional Finger Pull
  - Single or double (not available on units less than CN26: Frame OM 31 1/4" (794))
  - Not available with Lift Lock
- Performance Rating Option
  - Option to eliminate performance brackets on specific size units to allow for standard tilt hardware. Reduces performance from an LC-PG50 to LC-PG35.
  - Option for a CW (Commercial Window) performance rating.

**Mulling:**

- For mull performance, refer to the General Mulling chapter of the ADM.

## Unit Features

### Insect Screens:

- Standard screen frame is roll formed aluminum
- Aluminum screen: Full screen standard, half screen optional
- Aluminum surround to match exterior frame clad color
- Units with a glass height of 20" (508) or greater will have a center cross bar
- Screen mesh:
  - Standard: Charcoal Fiberglass
  - Optional: Charcoal High Transparency Fiberglass Mesh, Charcoal Aluminum Wire, Black Aluminum Wire, Bright Aluminum Wire, or Bright Bronze Aluminum Wire
  - Optional Double Hung Magnum screen, extruded aluminum

### Combination Storm Sash and Screen:

- Frame: Extruded aluminum frame .045"(1.1) thick. Color: Stone White, Bahama Brown, Pebble Gray and Evergreen
- Insect screen:
  - Standard Screen mesh: Charcoal Aluminum Wire
  - Optional screen material: Charcoal Fiberglass Mesh, Black Aluminum Wire, Bright Aluminum Wire, Bright Bronze Wire, Optional Charcoal High Transparency Fiberglass Mesh (CH Hi-Tran)
- Weather strip: Pile weather strip between operating panels and at stiles of main frame
- Hardware: Spring-loaded latches to secure storm panel
- Max size: 45 1/4" x 79 1/2" frame size

### Lock Status Sensor (Optional):

- Refer to **Lock Status Sensor Installation Instructions** for requirements.
- The Lock Status Sensor detects an open or closed status on Clad Ultimate Double Hung - Next Generation 2.0 units and Ultimate Single Hung units. A "locked" status is inferred from the presence of the Auto-Lock feature which activates the locking mechanism when the operating panels are closed. It allows easy integration with home automation systems through a wired or wireless connection.
  - For wired option, check with local codes on potential contractor requirements for low voltage networking connections.
  - Wireless option available. Requires purchase of secondary transmitter for operation. Marvin will prep for this option.
- Wireless Lock Status Sensor is located within the width and height of the frame.
- Sensor Location
  - Will always be located on the right-hand side of the check rail (from the exterior) for the bottom sash. For the top sash, the sensor will be located in the header parting stop of the frame on the right side (from the exterior).
- For Wired or Wireless, Black or White Magnet Covers only visible on secondary surface. Cover color dependent upon interior finish.
  - White: Prime and White Painted Interior Finish
  - Black: Bare and all other finish options

## Unit Features

### Cottage Unit:

The following formula will properly size a standard cottage style double hung:

#### Formula

1. Select the standard size double hung that will fit the rough opening
2. Subtract 7 1/2" (191) from the frame size height to get total glass height
3. Multiply the total glass height by the desired top sash ratio, this is the top sash glass height
4. Subtract the top sash height from the total glass height, this is the bottom sash glass height

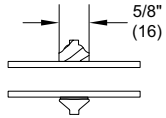
#### Example

1. CUDH-NG 2.0 with a 0.400 top sash ratio (2/5 - 3/5) cottage style. If the rough opening is 2'-4 1/4" x 4' (RO for a CUDH-NG 2.0 2020) the frame size will be 25 1/4" x 47 1/2"
2.  $47\ 1/2" - 7\ 1/2" = 40"$
3.  $40"$  multiplied by 0.400 (2/5) = 16"
4.  $40" - 16" = 24"$
5. The top sash will be a 2016 and the bottom sash will be a 2024. The call number for the example is: CUDH-NG 2.0 2016/24.

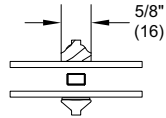
### CE Mulling Options

- Muller assemblies up to 120" (3048) x 79 1/2" (2019) as a 1H x multi-width assembly
- Muller assemblies up to 59 1/4" (1505) x 119 1/2" (3035) as a multi-high x 1W assembly
- Muller assemblies with 1" (25) LVL or 3/8" (10) aluminum mull reinforcement up to 120" (3048) x 100 3/8" (2550) as a multi-wide or multi-high assembly

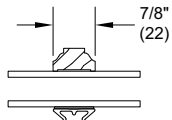
**Lite Options**



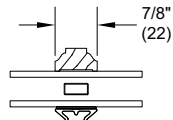
5/8" SDL



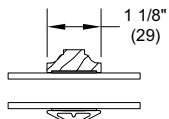
5/8" SDL  
W/Spacer



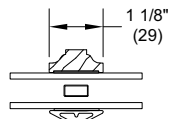
7/8" SDL



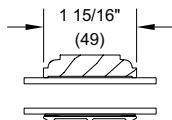
7/8" SDL  
W/Spacer Bar



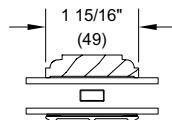
1 1/8" SDL



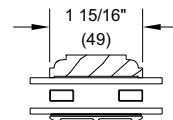
1 1/8" SDL  
W/Spacer Bar



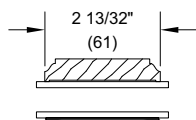
1 15/16 " SDL



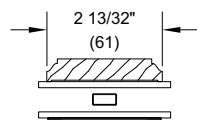
1 15/16 " SDL  
W/One Spacer Bar



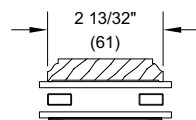
1 15/16 " SDL  
W/Two Spacer Bars



2 13/32" SDL



2 13/32" SDL  
W/One Spacer Bar



2 13/32" SDL  
W/Two Spacer Bars



## Unit Features

### Swinging Door Collection consists of:

UIFD G2: Ultimate Inswing French Door G2

UIFD225 G2: Ultimate Inswing French Door 2 1/4" G2

UIFD225 G2 IZ3: Ultimate Inswing French Door 2 1/4" G2 IZ3

### Frame:

- Frame thickness: 1 1/16" (27)
- UIFD G2 Frame width: 4 9/16" (116)
- UIFD2.25 G2 Frame width: 6 9/16" ( )
- Fiberglass reinforced pultruded sill with water shed and weep system
  - Color: bronze

### Panel:

- UIFD G2 Panel thickness: 1 3/4" (44)
  - Top rail height and stile width: 4 3/4" (121)
  - Sidelite stile width: 3" (76)
  - Bottom rail height: 8 1/8" (206)
  - Bottom rail:
    - Stave core is used for Pine, Cherry, Douglas Fir and Mahogany
    - Laminated veneer lumber (LVL) is used for White Oak
  - Stationary stile and hinged stile:
    - LVL is used for White Oak, Mahogany and Cherry
    - Stave core is used for Pine and Douglas Fir
  - Locking stile: all wood species use LVL
  - Top rail:
    - LVL is used for White Oak
    - Solid wood for Mahogany and Cherry
    - Stave core is used for Pine and Douglas Fir
  - Intermediate rail: solid wood for all species
- UIFD2.25 G2 Panel thickness: 2 1/4" (57)
  - Top rail height and stile width: 4 3/4" (121)
  - Sidelite stile width: 3" (76)
  - Bottom rail height: 8 1/8" (206)
  - Bottom rail, stationary stile, locking stile, hinged stile and top rail for all species use LVL
  - Intermediate rail: solid face laminated
- Interior sticking: Ogee
- Exterior glazing profile: Simulated putty

### Raised/Flat Panel Option:

- Standard stamped raised panel uses .080" (2) aluminum to the exterior with foam backing
- Core is medium density fiberboard (MDF) with non finger-jointed wood laminated to the interior

## Unit Features

### Hardware:

- Multi-point lock: applied to active and inactive panels, 2 3/8" (60) backset, with latch engagement and three locking points, with options of non-keyed or keyed alike.
  - Dead bolt
  - Head jamb bolt
  - Sill bolt
- Optional prep for passage latch with deadbolt (up to CN70 height)
- Optional no lock/no bore (up to CN70 height)
- Optional lever handle set active, inactive
- Traditional handle set finish options:
  - Powder coat finishes: Satin Taupe, White, Dark Bronze, Matte Black
  - Metal finishes: Satin Chrome, Polished Chrome, Antique Brass, Oil Rubbed Bronze
  - PVD finishes: Brass PVD, Oil Rubbed Bronze PVD, Satin Nickel PVD
- Contemporary handle set finish options:
  - Painted finishes: Matte Black, Dark Bronze,
  - PVD finishes: Oil Rubbed Bronze PVD, Satin Nickel PVD
- Minimalist handle set finish options:
  - Painted finishes: Matte Black, Dark Bronze,
  - PVD finishes: Oil-Rubbed Bronze, Satin Nickel

### Hinges:

- Adjustable hinges
  - Powder coat finish: Satin Taupe, Gold Tone, Dark Bronze. Silver Frost, White, Matte Black
  - Metal finishes: Satin Chrome, Polished Chrome, Antique Brass, Oil Rubbed Bronze
  - PVD finishes: Brass PVD, Oil Rubbed Bronze PVD, Satin Nickel PVD
  - Dimensions are 4 1/4"(108) x 3 3/4"(95) with 3/8"(10) radius corners
    - Adjustment is 3/16"(5) for horizontal and vertical of panels in frame
  - Quantity per panel
    - up to CN80 height = three hinges per panel
    - Greater than CN80 height and up to CN90 height = four hinges per panel
    - Greater than CN90 height = five hinges per panel

### Optional Screens:

- Ultimate sliding screen
  - Pull includes Internal locking mechanism
    - Color: Black
  - Screen color will match exterior frame color of clad units
  - Standard screen mesh: charcoal fiberglass
  - Optional screen mesh: bronze, charcoal aluminum, silver aluminum black aluminum, or Marvin Bright View
- Ultimate swinging screen
  - Four concealed hinges per panel are factory installed within the Z-bar
  - Handle includes latch with exterior handle and internal locking mechanism
    - Standard is contemporary exterior handle with option of traditional exterior handle
    - Colors: Bronze, Satin Nickel, Brass, or Satin Taupe
  - Screen color will match exterior frame color of clad units
  - Standard screen mesh: charcoal fiberglass
  - Optional screen mesh: bronze, charcoal aluminum, silver aluminum, black aluminum

### Weather Strip:

- Weather strip at all panel perimeter points
- Color: Black

### Mulling:

- For mull performance, refer to the General Mulling chapter of the ADM.

---

**Unit Features Continued****Glass and Glazing:**

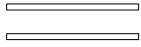
- Glazing method: Insulating - Dual Pane or Tri Pane (UIFD2.25 G2 only)
- Glazing seal: Silicone glazed
- Standard glass: Insulating Dual Pane Low E2 with Argon or Air
- Optional dual-pane glass make-ups:
  - Low E1 Argon or Air,
  - Low E3 Argon or Air,
  - Low E2/ERS Argon or air,
  - Low E3/ERS Argon or air, clear, tints, tempered, obscure, and decorative glass options
- Optional Tri Pane glass make-ups:
  - Low E2/E1 Argon, Krypton-Argon, or Air
  - Low E3/E1 Argon, Krypton-Argon, or Air
  - Low E1 Argon, Krypton-Argon, or Air
- Available glass types:
  - Laminated
  - Tempered
  - Obscure
- Tints:
  - Bronze
  - Gray
  - Green
  - Reflective Bronze
- Decorative glass options:
  - Frost
  - 1/2 English Reed
  - Rain
  - Sandblasted
  - Glue Chip
- All glass is of select quality complying with ASTM C 1036. Tempered or Laminated safety glazing per CPSC 16 CFR 1201. Insulating glass is manufactured and tested to pass level ASTM 2190 and is IGCC certified.
- IZ3 product requires laminated, tempered glass
- For additional specialty glazing options, please contact your Marvin representative.

**Lock Status Sensor (Optional):**

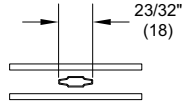
- Refer to **Lock Status Sensor Installation Instructions** for requirements.
- To achieve a closed and locked status, The Lock Status Sensor requires that the door must be closed to depress the anti-slam mechanism so that the door can be manually locked. It allows easy integration with home automation systems using a wireless connection.
  - Requires purchase of secondary transmitter for operation. Marvin will prep for this option. Wired connection not available.
- Wireless Lock Status Sensor is located within the width and height of the operating panel.

Sensor Location will always be integrated into the locking hardware system.

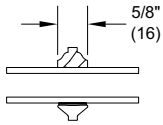
**Standard Divided Lite Options**



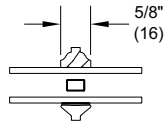
Insulating Glass



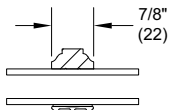
Aluminum 23/32"  
Contour GBG



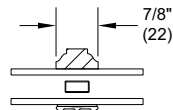
5/8" SDL



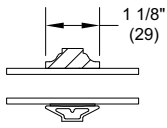
5/8" SDL  
W/Spacer



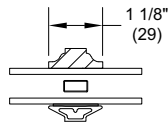
7/8" SDL



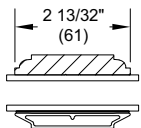
7/8" SDL  
W/Spacer Bar



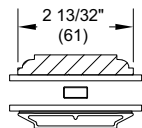
1 1/8" SDL



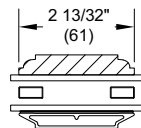
1 1/8" SDL  
W/Spacer Bar



2 13/32" SDL



2 13/32" SDL  
W/One Spacer Bar



2 13/32" SDL  
W/Two Spacer Bars

# Timbergrain SIMULATED DIVIDED LITES

The Timbergrain simulated divided lites (SDL) collection feature woodgrain bars to add depth and dimension to your front door. SDL doors capture the elegance of traditional divided lites, with added energy performance.

Glass Code: SDL

Privacy Rating: 1 2 3 4 5 6 7 8 9

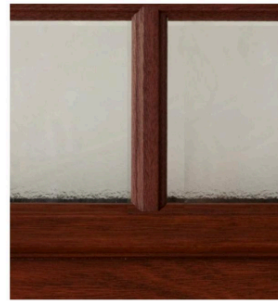
TRANSPARENT OPAQUE

GRID PATTERN	GLASS OPTIONS	WOODGRAIN								
		TIMBERGRAIN CHERRY	TIMBERGRAIN FIR	TIMBERGRAIN KNOTTY ALDER	TIMBERGRAIN MAHOGANY	TIMBERGRAIN OAK	TIMBERGRAIN	TIMBERGRAIN	TIMBERGRAIN	TIMBERGRAIN
<b>FIBERGLASS DOORS</b>										
20	4L, 6L, 8L, 9LP	●	●	●	●	●	●	●	●	●
22	9LP, 10L, 15L	●	●	●	●	●	●	●	●	●
25	4L, 6L, 9LP	●	●	●	●	●	●	●	●	●
25	6L	●	●	●	●	●	●	●	●	●
25	9L	●	●	●	●	●	●	●	●	●
25P	4L, 6L, 9LP	●	●	●	●	●	●	●	●	●
25P	6L	●	●	●	●	●	●	●	●	●
25P	9L	●	●	●	●	●	●	●	●	●
63	6L, 9L	●	●	●	●	●	●	●	●	●
201	4L, 6L, 8L	●	●	●	●	●	●	●	●	●
201	9LP	●	●	●	●	●	●	●	●	●
201P	10L, 15L	●	●	●	●	●	●	●	●	●
201P	4L, 6L, 8L	●	●	●	●	●	●	●	●	●
201P	9LP	●	●	●	●	●	●	●	●	●
201P	10L, 15L	●	●	●	●	●	●	●	●	●
601	4L, 8L	●	●	●	●	●	●	●	●	●
601P	CLEAR LOW-E, RAIN	●	●	●	●	●	●	●	●	●
608	4L, 8L	●	●	●	●	●	●	●	●	●
648	4L	●	●	●	●	●	●	●	●	●
864	3L, 4L, 6L	●	●	●	●	●	●	●	●	●
<b>FIBERGLASS SIDELITES</b>										
33	2L, 4L, 6LP	●	●	●	●	●	●	●	●	●
33	3L	●	●	●	●	●	●	●	●	●
38	2L, 3L, 4L	●	●	●	●	●	●	●	●	●
38	3LP	●	●	●	●	●	●	●	●	●
38	5L	●	●	●	●	●	●	●	●	●
38	6LP	●	●	●	●	●	●	●	●	●
690	3LAC, 3LP	●	●	●	●	●	●	●	●	●
690	5L, 6LP	●	●	●	●	●	●	●	●	●
820	2L, 2LP, 4L	●	●	●	●	●	●	●	●	●

Availability based on 3/0 with for doors and 1x4 for sidelites. ● 6/8 height ● 7/0 height ● 8/0 height ● 8/0 height  
Other panel configurations and sizes may be available.



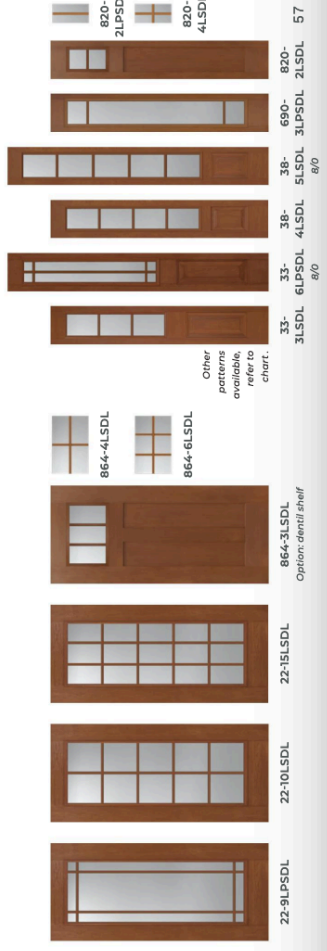
SDL profile for Fir grain



SDL profile for Cherry, Oak, Mahogany and Knotty Alder grain

## GLASS OPTIONS

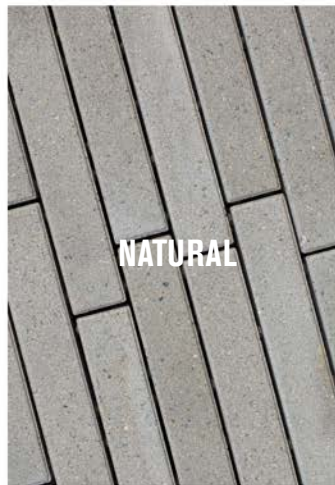
SDL doors are available with Clear Low-E or your choice of privacy and textured glass.

Other patterns available, refer to chart.

Option: demit shelf

# BROADMOUR PLANK 10CM PAVER



### Features

- Smooth top, chamfered edges
- High flow-rate eco/permeable
- Auto spacers, narrow joint
- Onyx is KolorLast protected

Size	Face Area	Weight	Units/Layer	Layer	Layers	Units/Pallet	Pallet Weight
18 x 3 x 4" H	0.36 sq. ft.	17.3 lbs.	22	7.92 sq. ft.	6	132 (47.5 sq. ft.)	2,130 lbs.

Use roller compactor or buffer pad to protect surfaces. Refer to actual product samples when making color selection.



Manufactured by:

7200 Broadway Ave. N, Rochester, MN 55906  
 Phone: 507-288-8850 • Fax: 507-535-1487  
[www.rochesterpc.com](http://www.rochesterpc.com)

©Copyright 2020. All Rights Reserved. This information has been prepared for the benefit of customers interested in Rochester Concrete Products. It was reviewed carefully prior to publication. Rochester Concrete Products assumes no liability for its accuracy or completeness. Final determination of the suitability of any information or material for the use contemplated, or for its manner of use, is the sole responsibility of the user. 221

