

Consultant

Notes

1. A SIDE WALK WITH A PITCH GREATER THAN 1:20 IS A RAMP. THE MAXIMUM PITCH OF ANY RAMP OR WALK SHALL BE 1:12. RAMPS OVERCOMING MORE THAN 6" CHANGE IN ELEVATION TO HAVE HANDRAILS ON BOTH SIDES.
2. ALL DRIVEWAYS, CURB ADJACENT TO DRIVEWAYS, AND SIDEWALK CONSTRUCTION WITHIN THE PUBLIC RIGHT-OF-WAY, SHALL BE COMPLETED IN ACCORDANCE WITH CITY OF MADISON STANDARD SPECIFICATIONS FOR PUBLIC WORKS CONSTRUCTION BY A CONTRACTOR CURRENTLY LICENSED BY THE CITY.
3. ALL NEW DRIVES TO BE CONSTRUCTED WITH CLASS III APPROACHES IN ACCORDANCE WITH MADISON GENERAL ORDINANCE SECTION 10.08(4).
4. ALL TRASH AND RECYCLING TO BE COLLECTED IN TRASH ROOMS IN THE BUILDING BASEMENTS.
5. SEE SITE GRADING AND UTILITY PLANS FOR ADDITIONAL INFORMATION.
6. ALL WORK IN THE RIGHT OF WAY SHALL BE PERFORMED BY A CITY OF MADISON LICENSED CONTRACTOR.
7. BIKE STALLS TO BE IN ACCORDANCE WITH MADISON GENERAL ORDINANCE 28.11, (SEE SUBSECTIONS (3)(a) AND (3)(b)(2)).
8. ALL CITY SIDEWALK, CURB, AND GUTTER WHICH IS DAMAGED DURING CONSTRUCTION OR THAT THE CITY ENGINEER DETERMINES TO BE NECESSARY SHALL BE REPLACED.

Revisions

Amended FUD-SIP Submittal - January 6, 2009
Informational UDC Submittal - January 27, 2010
Initial UDC Submittal - February 10, 2010
FUD-SIP Submittal - March 20, 2010

Project Title

Lot 95, 2nd Addition to
Midtown Commons
1723 Waldorf Drive
Madison, Wisconsin

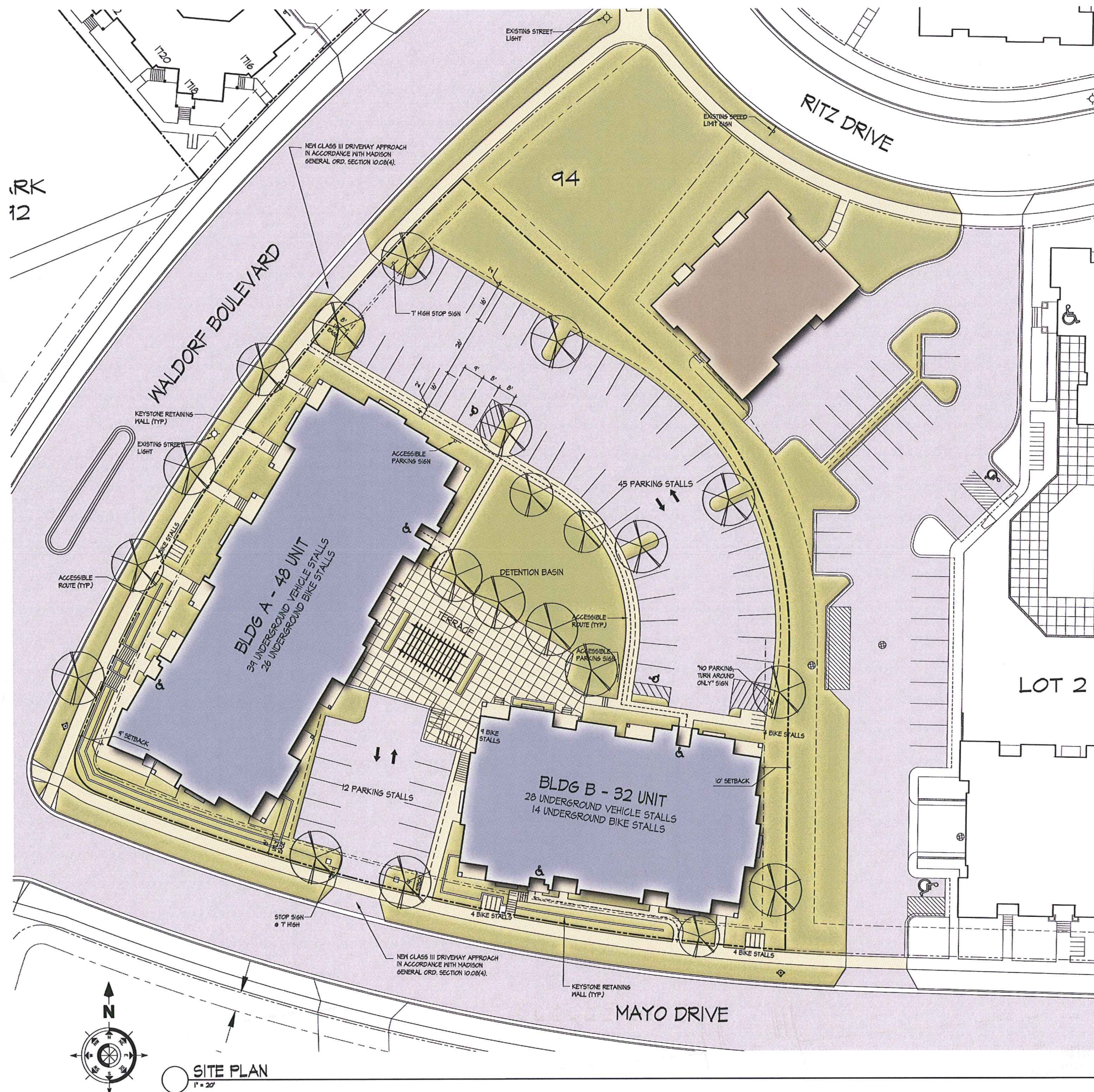
Drawing Title

Site Plan

Project No.
0466

Drawing No.
C-1.1

This document contains confidential or proprietary information of Knothe & Bruce Architects. It shall be the property of Knothe & Bruce Architects and shall not be reproduced, stored, or transmitted in any form or by any means, electronic, mechanical, or otherwise, without the prior written consent of Knothe & Bruce Architects. Knothe & Bruce Architects is a Limited Liability Company of Wisconsin.



SITE PLAN
1" = 20'

Consultant

Notes



END ELEVATION ALONG MAYO DRIVE
5/32" = 1'-0"



END ELEVATION
5/32" = 1'-0"



REAR ELEVATION
5/32" = 1'-0"

Revisions

FUD-SIP Submittal - March 20, 2013

Project Title
Lot 95, 2nd Addition to
Midtown Commons
1723 Waldorf Drive
Madison, Wisconsin

Drawing Title
Elevations
Building #A

Project No.
0466

Drawing No.
A-2.1A

This document contains confidential or proprietary information of Knothe & Bruce Architects. It is to be used only for the project for which it was prepared. It is not to be reproduced, distributed, sold or otherwise made available to any third party without the prior written consent of Knothe & Bruce Architects. Knothe & Bruce Architects is a Limited Liability Company of Wisconsin.

Consultant

Notes



- TYPICAL MATERIALS
- ASPHALT SHINGLES
 - ALUMINUM SOFFIT AND FASCIA
 - COMPOSITE TRIM
 - COMPOSITE SIDING
 - FRECAST BAND
 - VINYL WINDOWS
 - COMPOSITE PANELS
 - ALUMINUM RAILING
 - FRECAST WINDOW SILLS
 - SIGNAGE LOCATIONS
 - BRICK VENEER
 - FRECAST BAND
 - GROUND FACED CMU

○ FRONT ELEVATION ALONG WALDORF BLVD.
3/32" = 1'-0"



○ END ELEVATION ALONG MAYO DRIVE
3/32" = 1'-0"



○ END ELEVATION
3/32" = 1'-0"



○ REAR ELEVATION
3/32" = 1'-0"

Revisions

PLD-SIP Submittal - March 20, 2013

Project Title
Lot 95, 2nd Addition to
Midtown Commons
1723 Waldorf Drive
Madison, Wisconsin

Drawing Title
Elevations - Future
Conversion to Commercial
Building #A

Project No. Drawing No.
0466 A-2.1A

This document contains confidential or proprietary information of Knothe & Bruce Architects. Neither the document nor the information herein is to be reproduced, distributed, used, or stored, either in whole or in part, except as specifically authorized by Knothe & Bruce Architects. Knothe & Bruce Architects is a Limited Liability Company of Wisconsin.