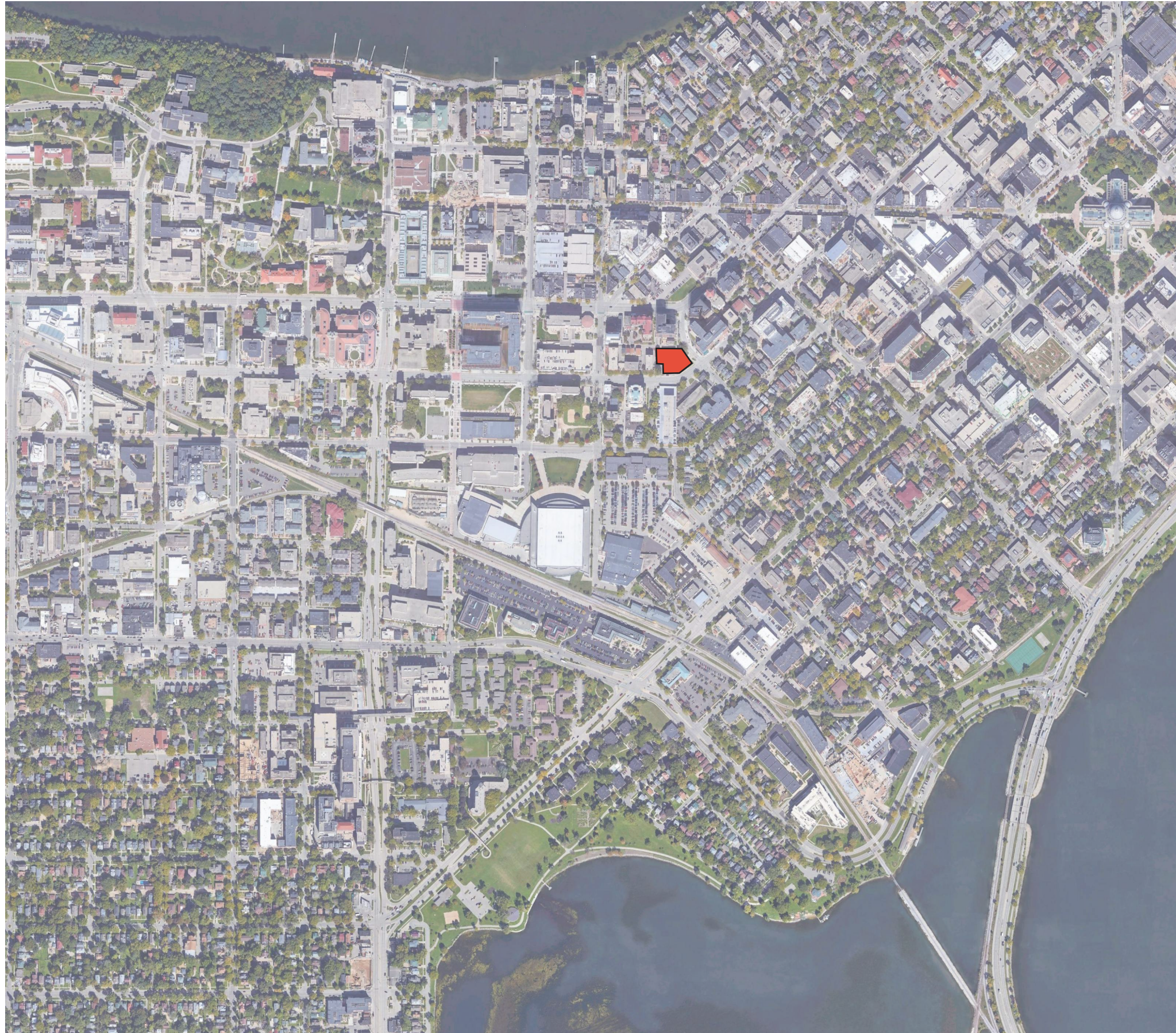


W JOHNSON ST +
N BASSETT ST

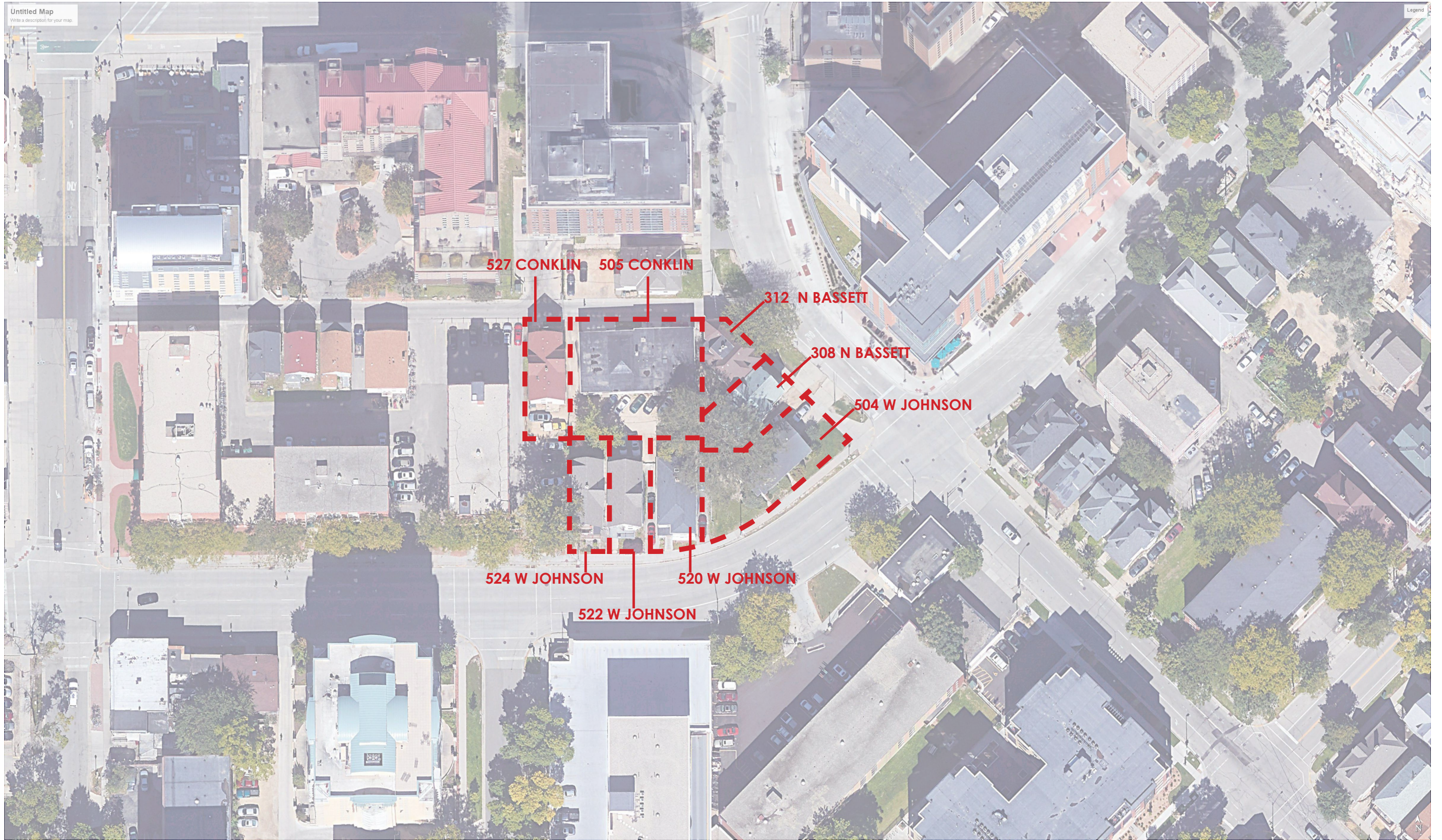
MADISON URBAN DESIGN COMMISSION
INFORMATIONAL MEETING PRESENTATION
OCTOBER 6, 2021

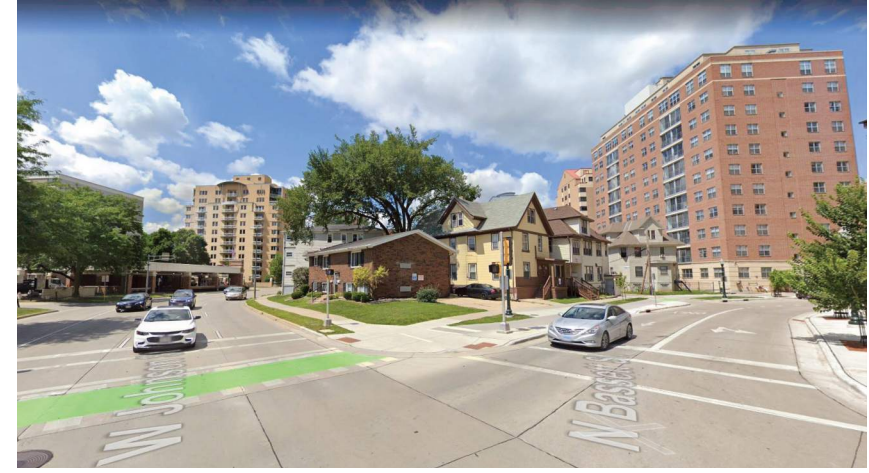
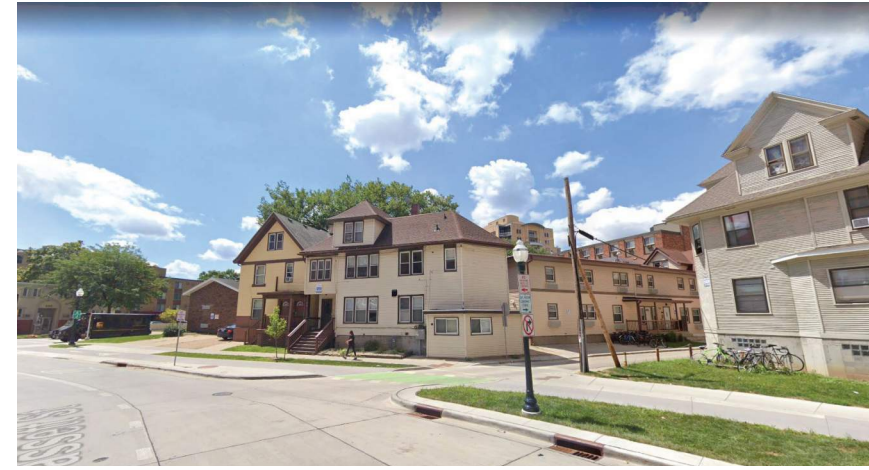


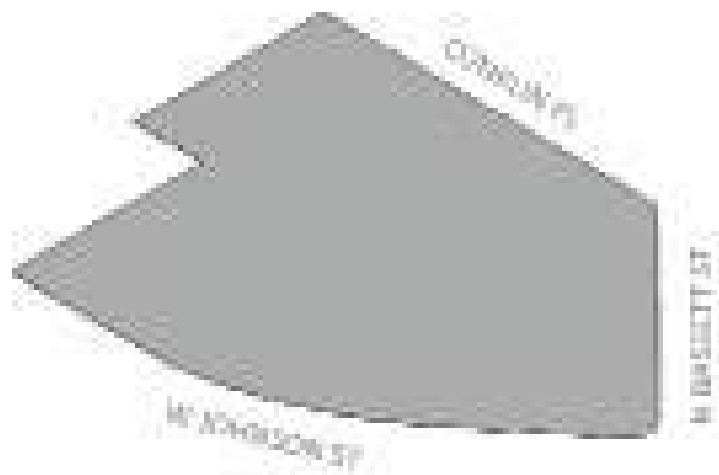
W JOHNSON ST + N BASSETT ST

- CONNECTIVITY
- PROJECT SITE PARCELS
- EXISTING SITE CONDITIONS
- SITE DIAGRAM
- SITE PLAN
- FLOOR PLANS
- RENDERINGS

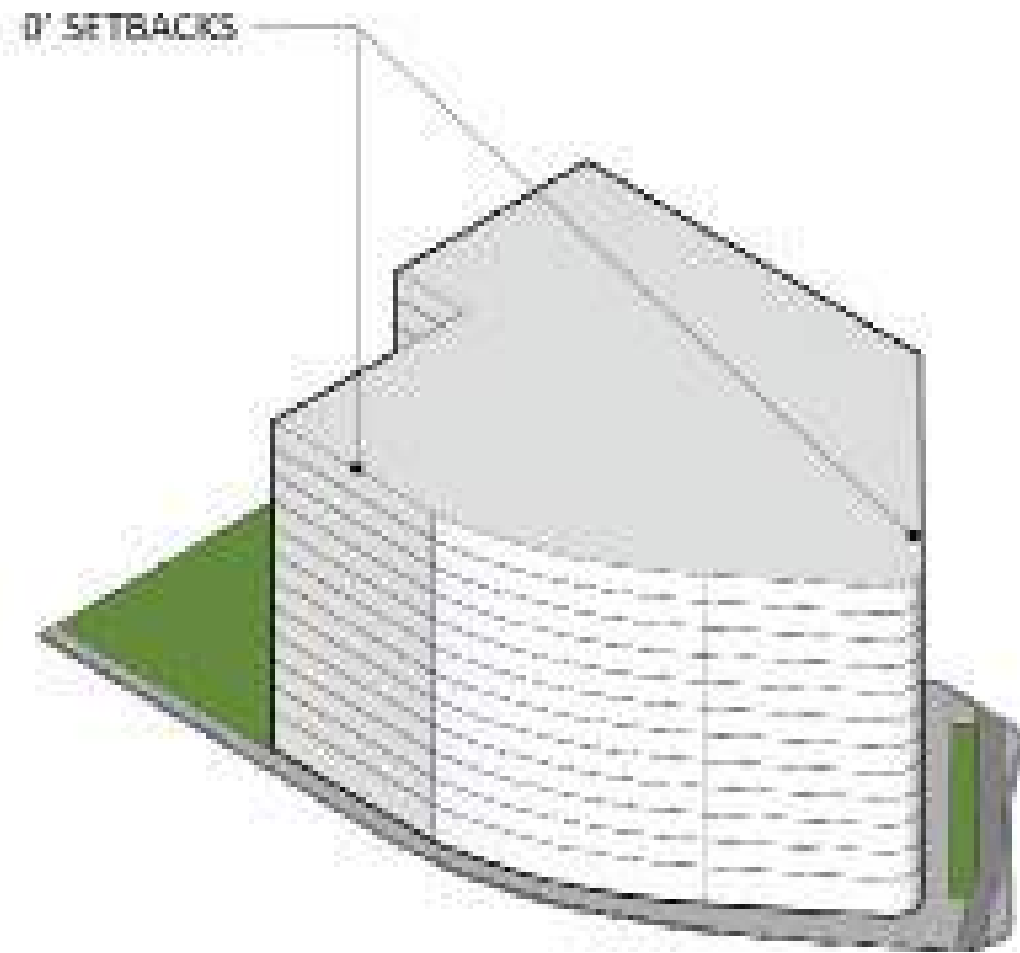




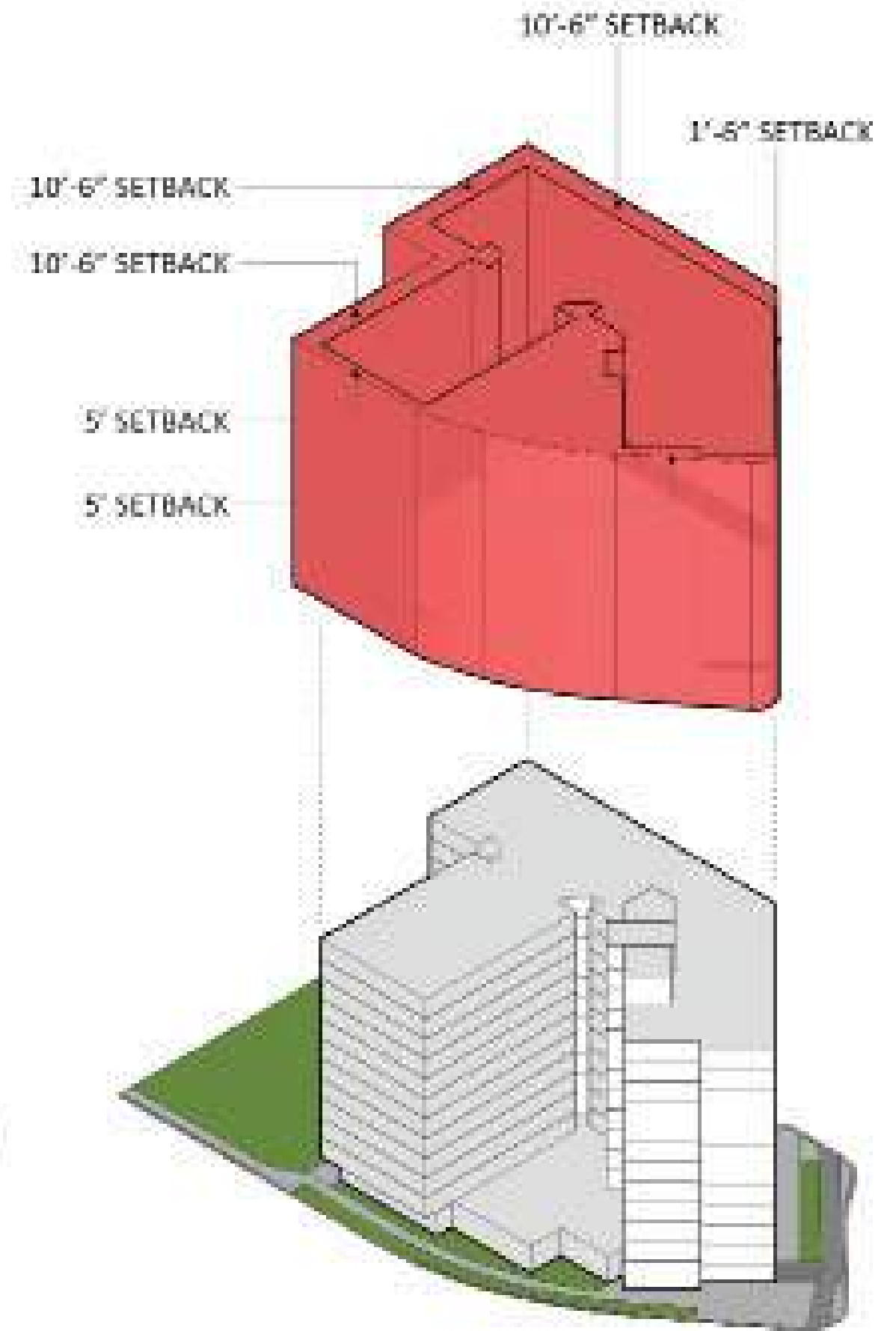




SITE: 0.65 Acres (28,500 SF)



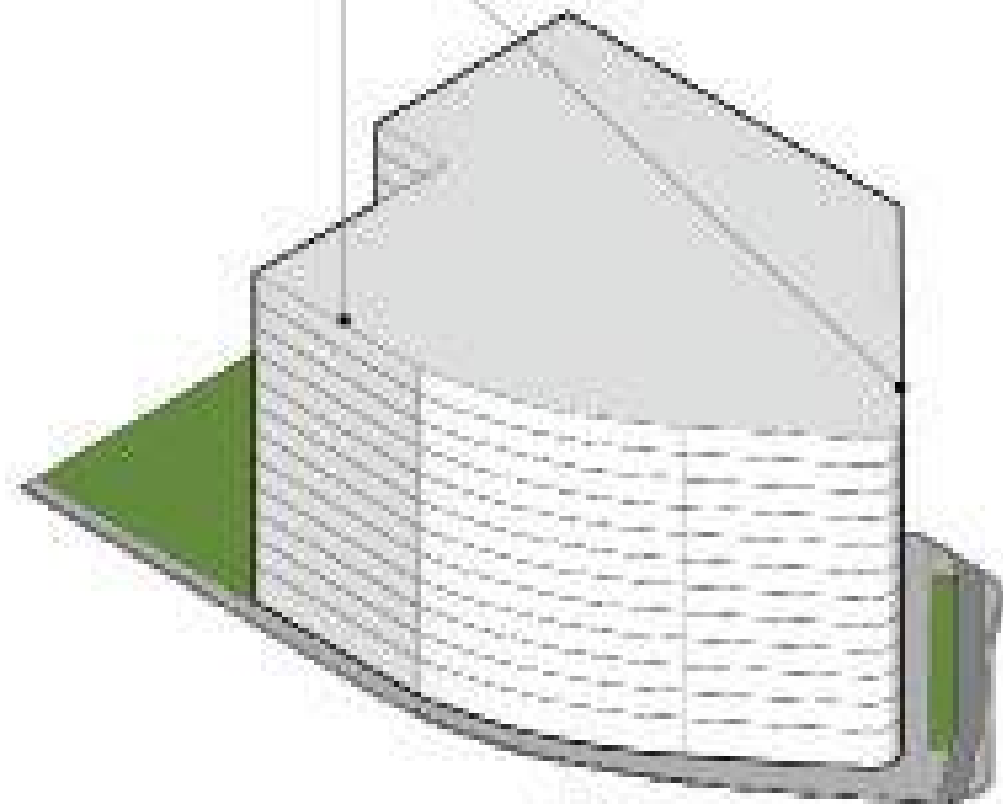
SITE: Maximum Build-Out



SETBACKS

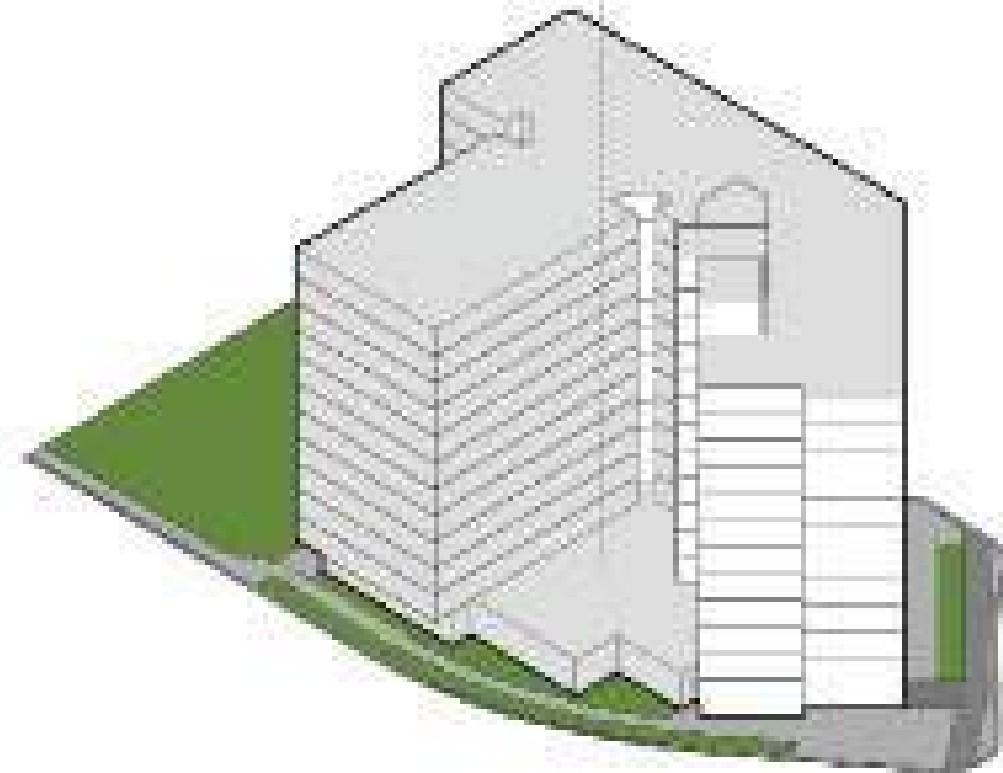
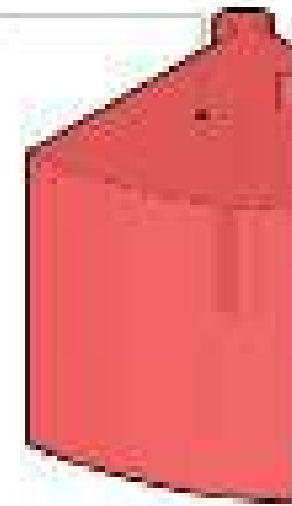
CONCEPT DIAGRAM

0' SETBACKS

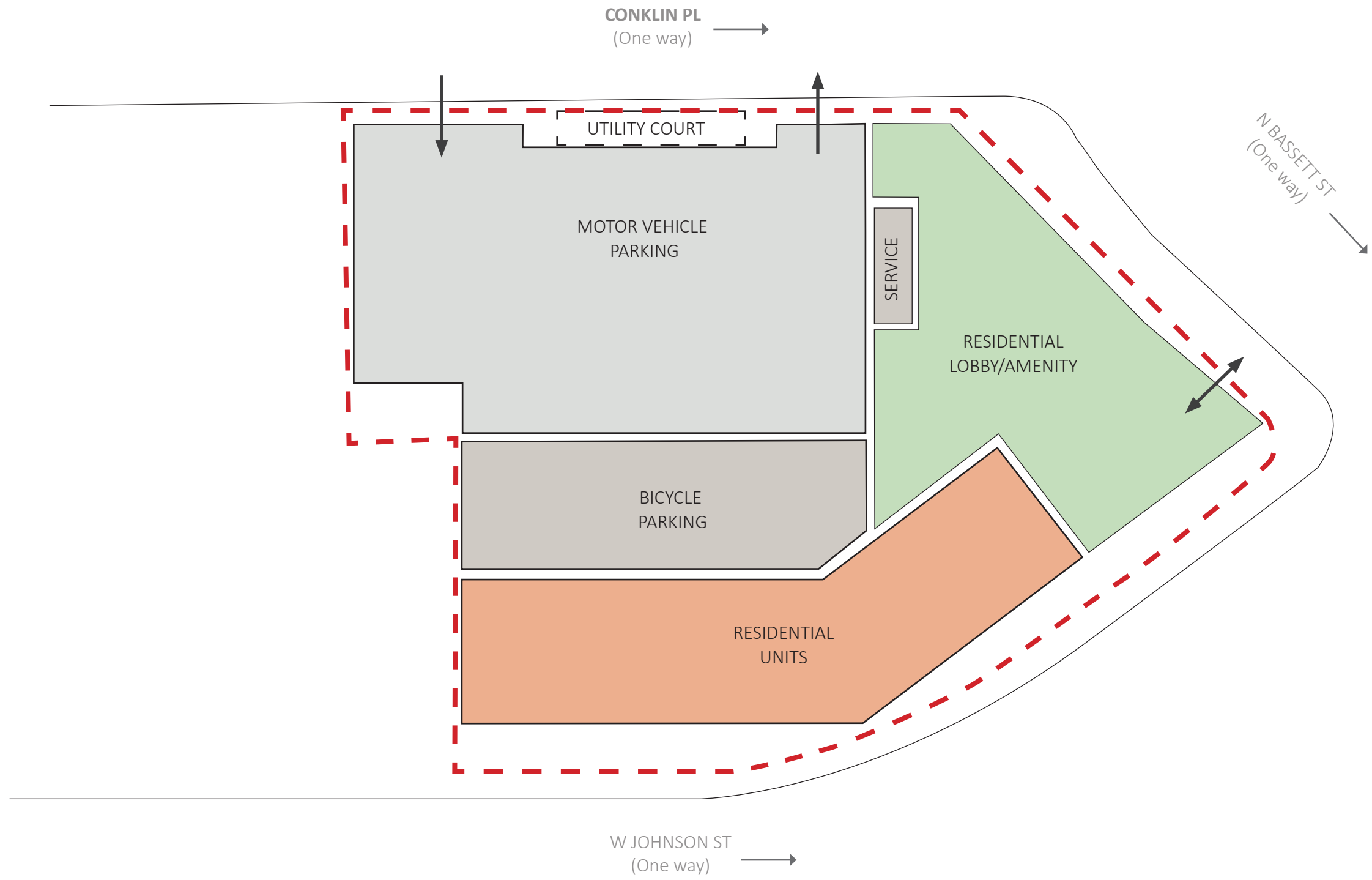


SITE: Maximum Build-Out

5000 SF MASSING
CUT-OUT FOR RELIEF
ON JOHNSON ST

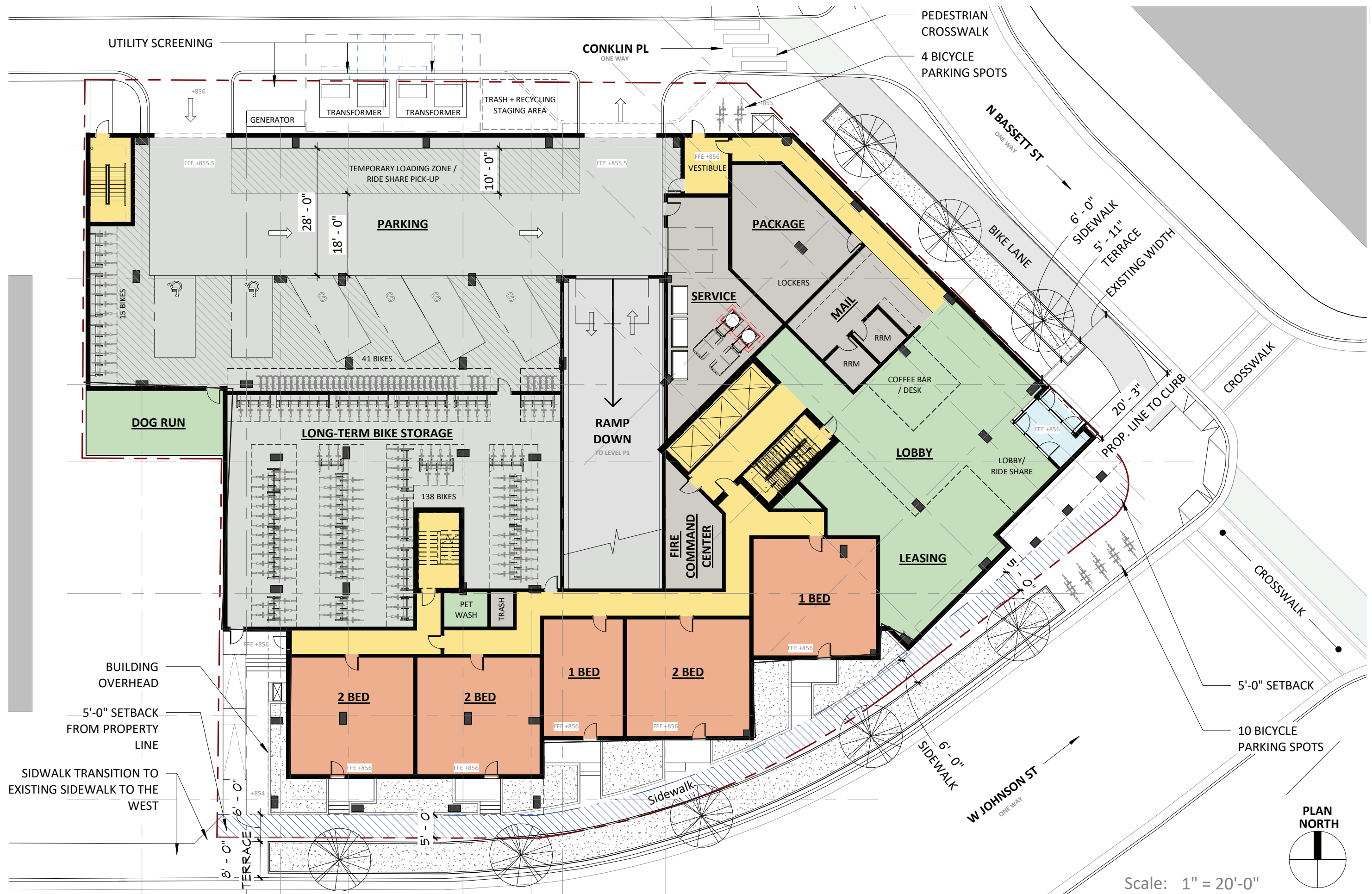


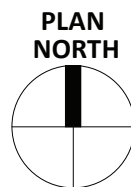
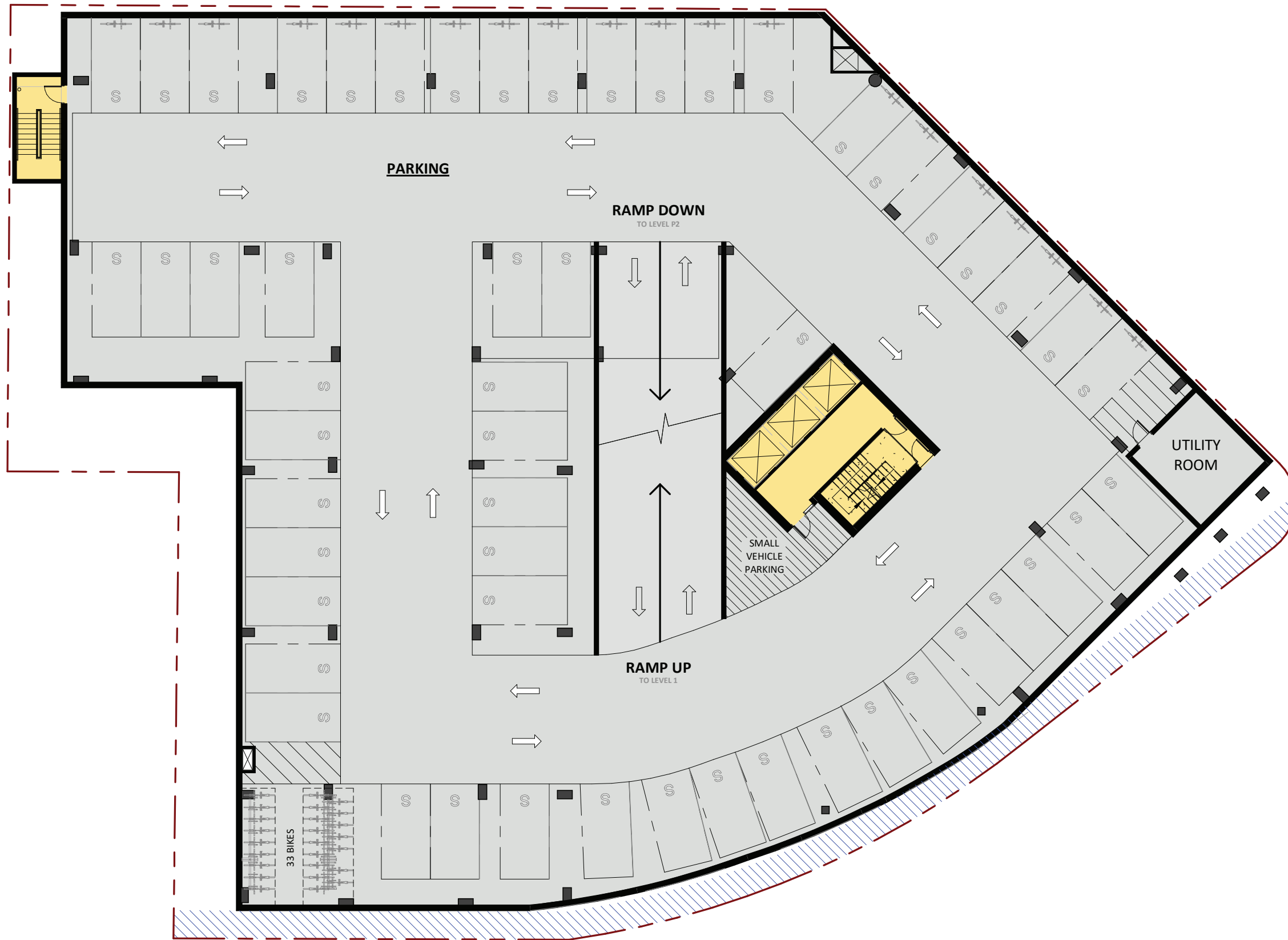
MASSING RELIEF





	SHOULDER	1
	CONCRETE	1
	PAVING	10
	WATER	100
	SEWER	100



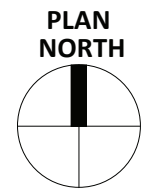


Scale: 1" = 20'-0"

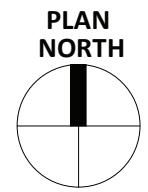
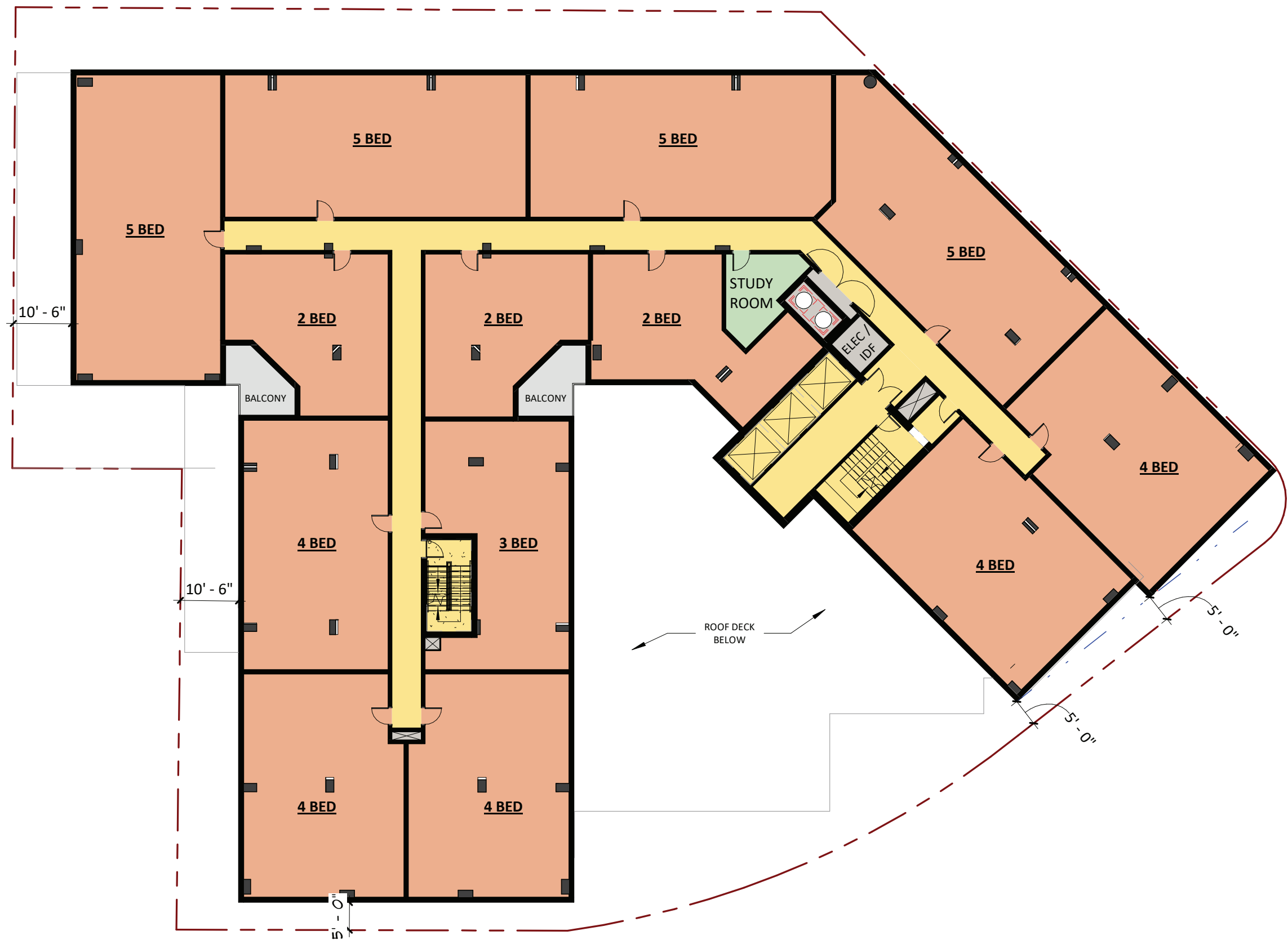
LEVEL P1 PLANS



Scale: 1" = 20'-0"

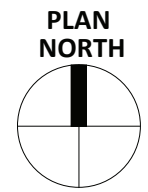


LEVEL 2 PLANS



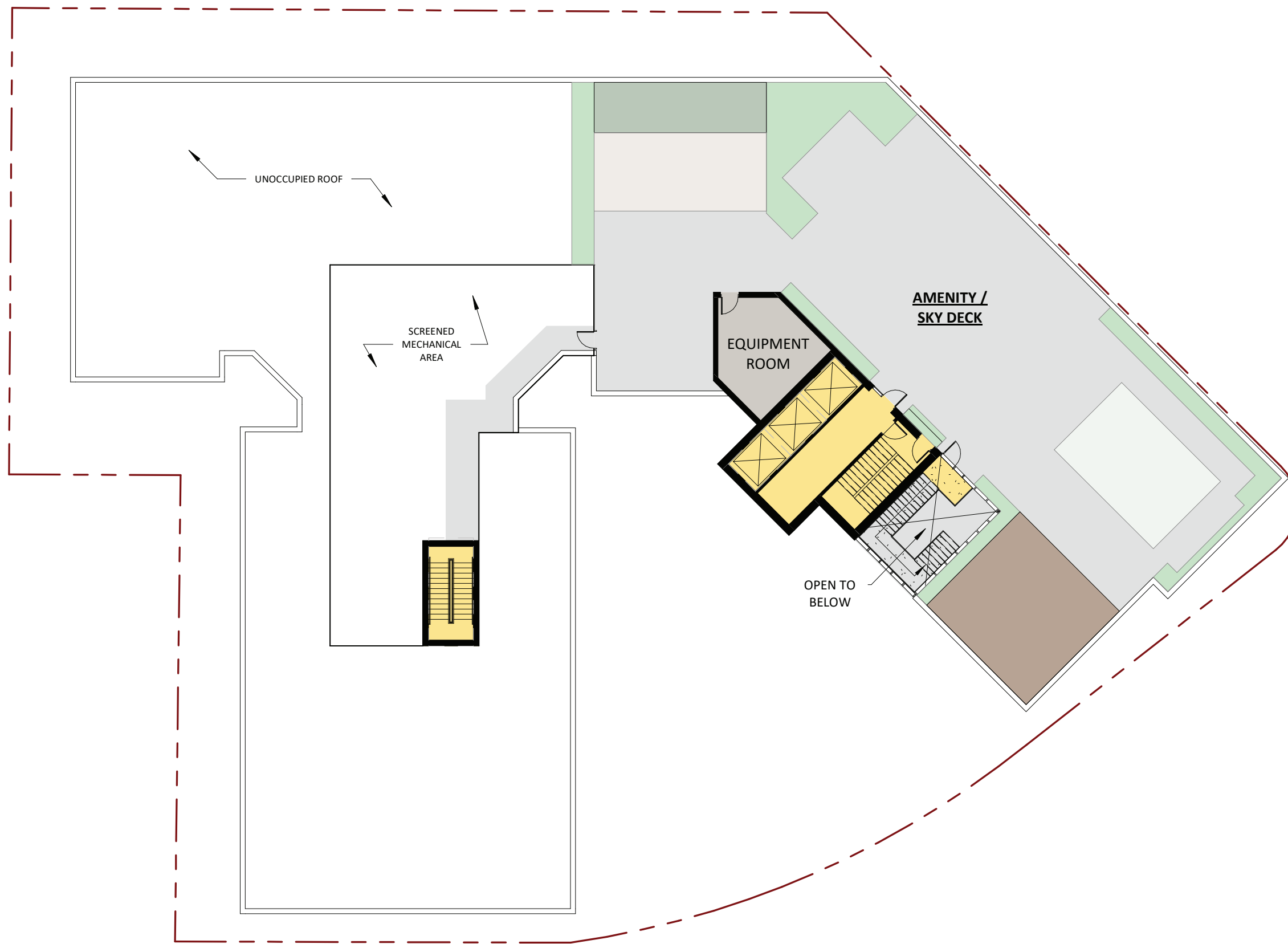
Scale: 1" = 20'-0"

LEVEL 3-11 PLANS



Scale: 1" = 20'-0"

LEVEL 12 PLANS





LOOKING NORTH ON N BASSETT ST



LOOKING SOUTH ON N BASSETT ST



LOOKING WEST ON W JOHNSON ST



LOOKING NORTH ON W JOHNSON ST



LOOKING EAST ON W JOHNSON ST



CORNER VIEW



N BASSETT ST LEVEL 1 ELEVATION

