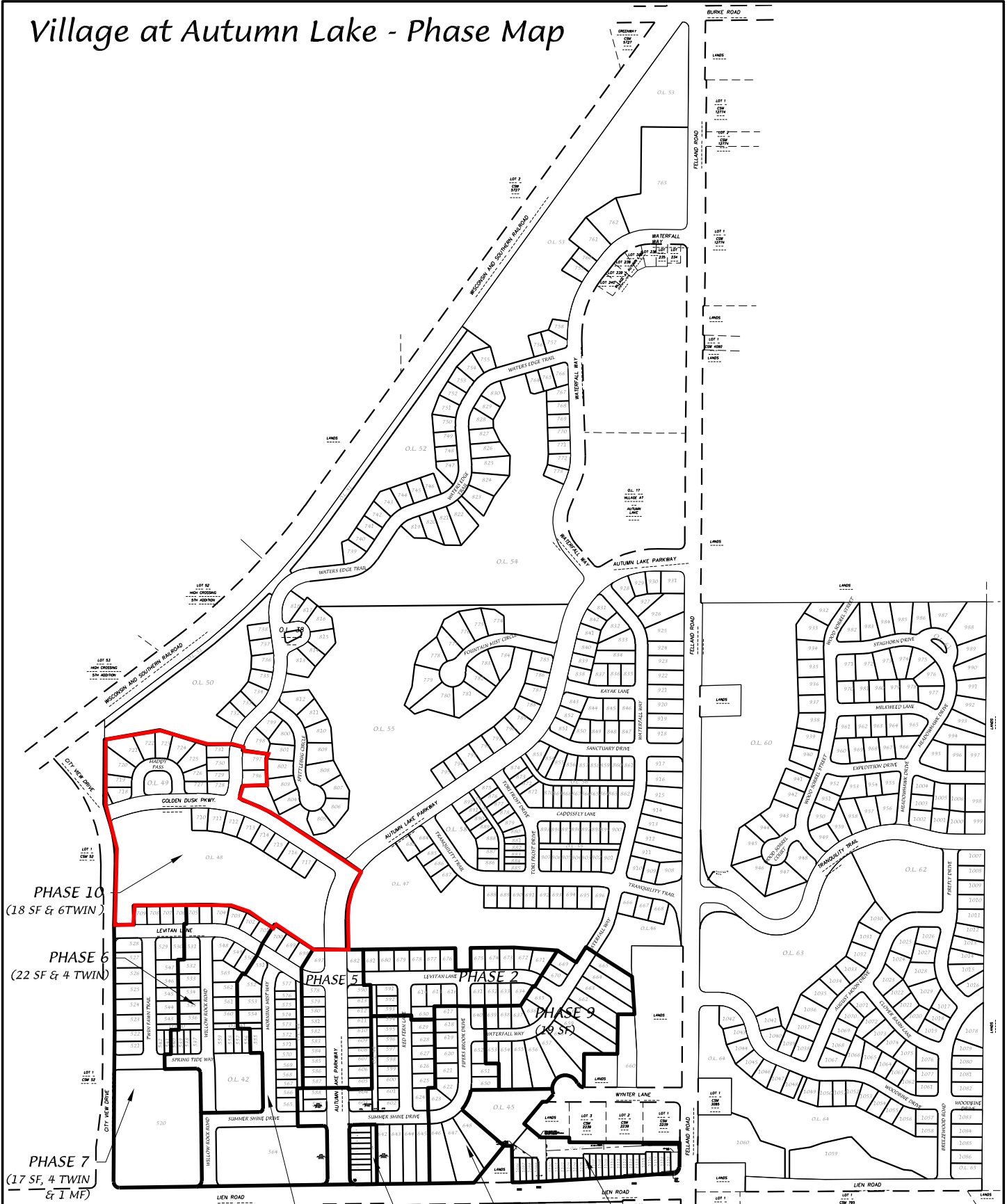


Village at Autumn Lake Phase 10 – Location Map  
Contract 8489, Project 12714



# Village at Autumn Lake - Phase Map



**PHASE 10**  
(18 SF & 6TWIN)

**PHASE 6**  
(22 SF & 4 TWIN)

**PHASE 7**  
(17 SF, 4 TWIN & 1 MF)

**PHASE 4**

**PHASE 1**

**PHASE 3**

**PHASE 8**  
(PH8-10 TWIN)  
(PH8B-14 TWIN)

DATE: 08-28-19

F.N.: 18-05-169

REV.

DRAWN BY: JMS

**D'ONOFRIO KOTTKE AND ASSOCIATES, INC.**

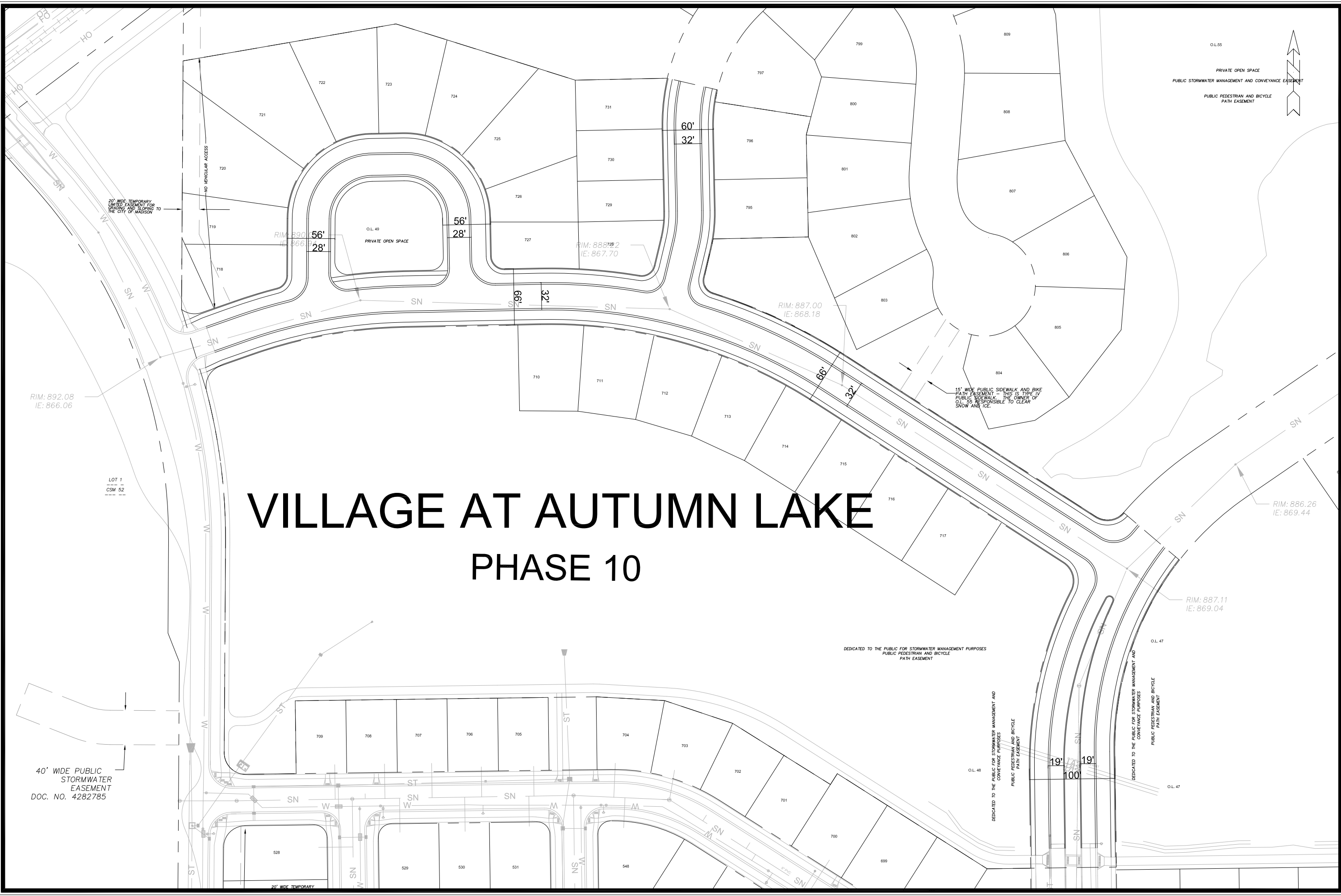
7530 Westward Way, Madison, WI 53717  
Phone: 608.833.7530 • Fax: 608.833.1089  
YOUR NATURAL RESOURCE FOR LAND DEVELOPMENT



Scale 1" = 600'

U:/USER/1407117/DRAWINGS/PHASE MAP.DWG

# VILLAGE AT AUTUMN LAKE PHASE 10



O.L.55  
PRIVATE OPEN SPACE  
PUBLIC STORMWATER MANAGEMENT AND CONVEYANCE EASEMENT  
PUBLIC PEDESTRIAN AND BICYCLE PATH EASEMENT



40' WIDE PUBLIC STORMWATER EASEMENT  
DOC. NO. 4282785

15' WIDE PUBLIC SIDEWALK AND BIKE PATH EASEMENT - THIS IS TYPE PUBLIC SIDEWALK. THE OWNER OF O.L. IS RESPONSIBLE TO CLEAR SNOW AND ICE.

DEDICATED TO THE PUBLIC FOR STORMWATER MANAGEMENT PURPOSES  
PUBLIC PEDESTRIAN AND BICYCLE PATH EASEMENT

DEDICATED TO THE PUBLIC FOR STORMWATER MANAGEMENT AND CONVEYANCE PURPOSES  
PUBLIC PEDESTRIAN AND BICYCLE PATH EASEMENT

DEDICATED TO THE PUBLIC FOR STORMWATER MANAGEMENT AND CONVEYANCE PURPOSES  
PUBLIC PEDESTRIAN AND BICYCLE PATH EASEMENT

DATE	BY
4-2-19	LMJ
REVISION 1	REVISION
3-23-19	LMJ
Scale: #####	12345

12345  
Village at Autumn Lake - Phase 10  
MADISON, MADISON, WI  
BPW Exhibit  
CONTRACT NO.: 987654  
CITY OF MADISON



12714