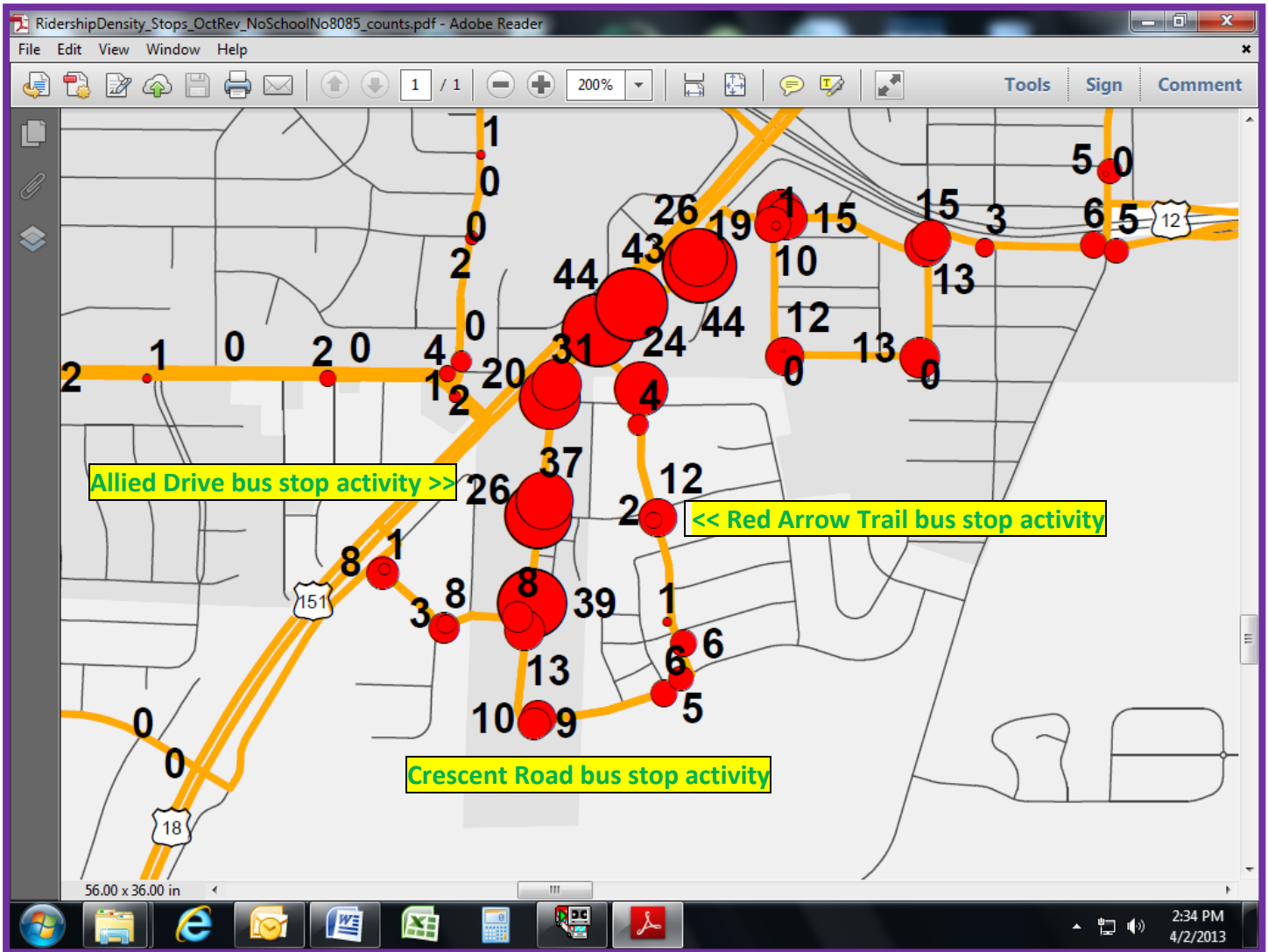


Route 18 Realignment of Service in the Allied Loop

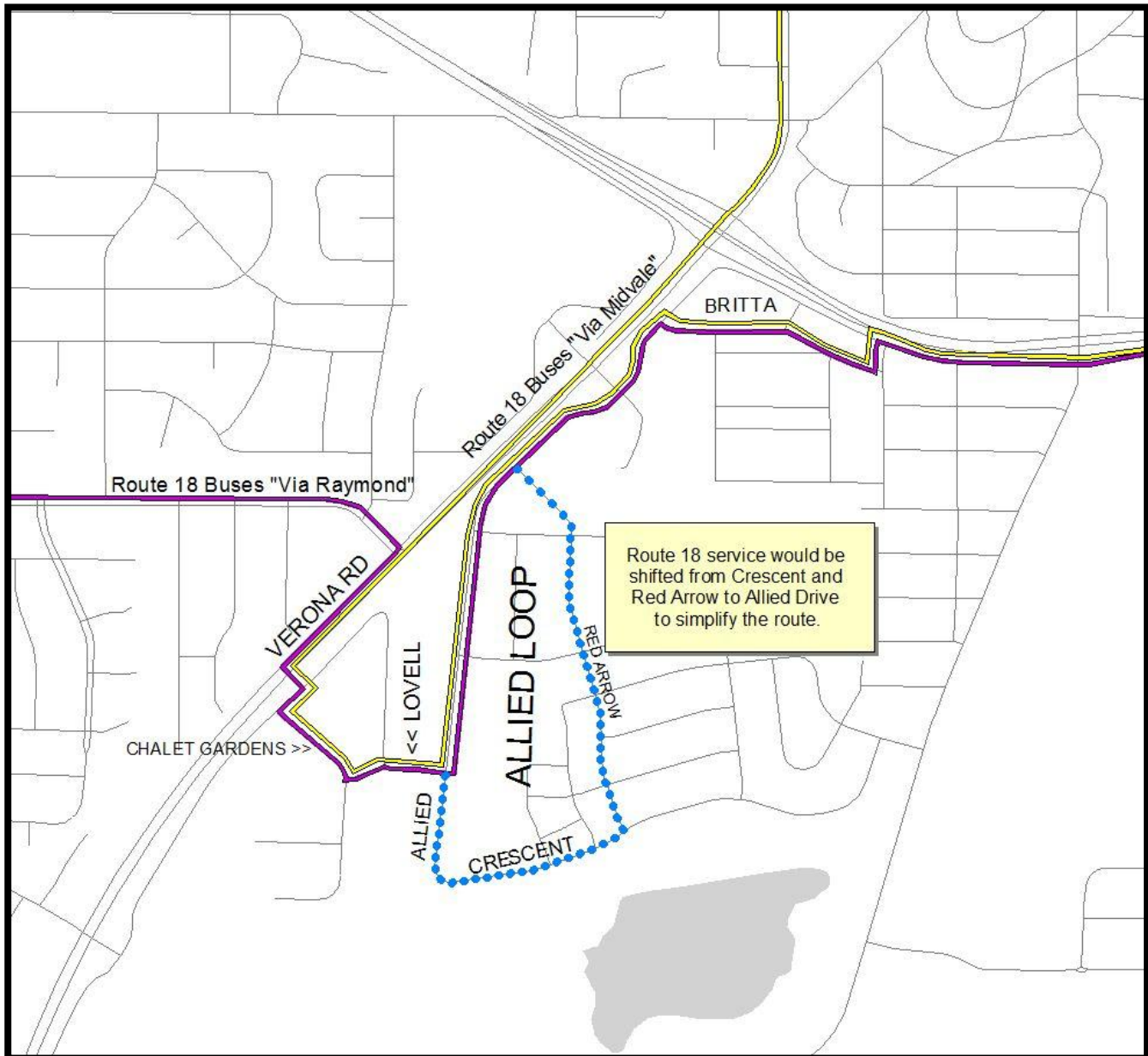
The proposal to have all Route 18 trips in the Allied loop to serve Allied Drive, as opposed to splitting service between Allied Drive and Red Arrow Trail works toward accomplishing two essential goals. First, it would provide a more consistent service that's directed at bus stops with a higher level of utilization, and second, it would improve the route's on-time performance.

The graphic below displays average daily boarding data for bus stops along Allied Drive (west side of loop) and for stops along Red Arrow Trail (east side of the loop). Data were pulled from October of 2012 and clearly display a higher level of usage along Allied Drive. To simplify the service and direct the service at busier bus stops, planners have proposed that Route 18 will always serve Allied Drive north of Lovell Lane, while Route 19 will continue to serve Red Arrow Trail.



The graphic below shows the proposed alignment of Route 18 service in the Allied Loop. The dotted blue line displays current routing for about half of Route 18's service. Route 19 will still serve Crescent Road and Red Arrow Trial.

This change also reduces distance operated in the loop by one-half of a mile on streets that have a low average operating speed, saving between 1 and 3 minutes of travel time in both directions. The amount of time saved would result in more reliable connections for passengers at the transfer points.



Under the current route 18 schedule, buses are arriving late at the transfer points about 30% of the time. This often results in missed connections, or buses arriving at the last moment and dropping off passengers in transfer point driveways, who then run to the buses to which they want to transfer. It also results in bus operators "pushing it" (i.e. speeding and attempting to make traffic signals) in an attempt to maintain the schedule, knowing that the passengers need to make their connections. These are obviously unsafe situations, which would be alleviated by streamlining this important route.