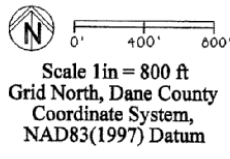


**PLAT OF SURVEY
CHEROKEE MARSH
CONSERVATION PARK**

Part of Section 7, T8N R10E,
Town of Burke, Dane County, WI

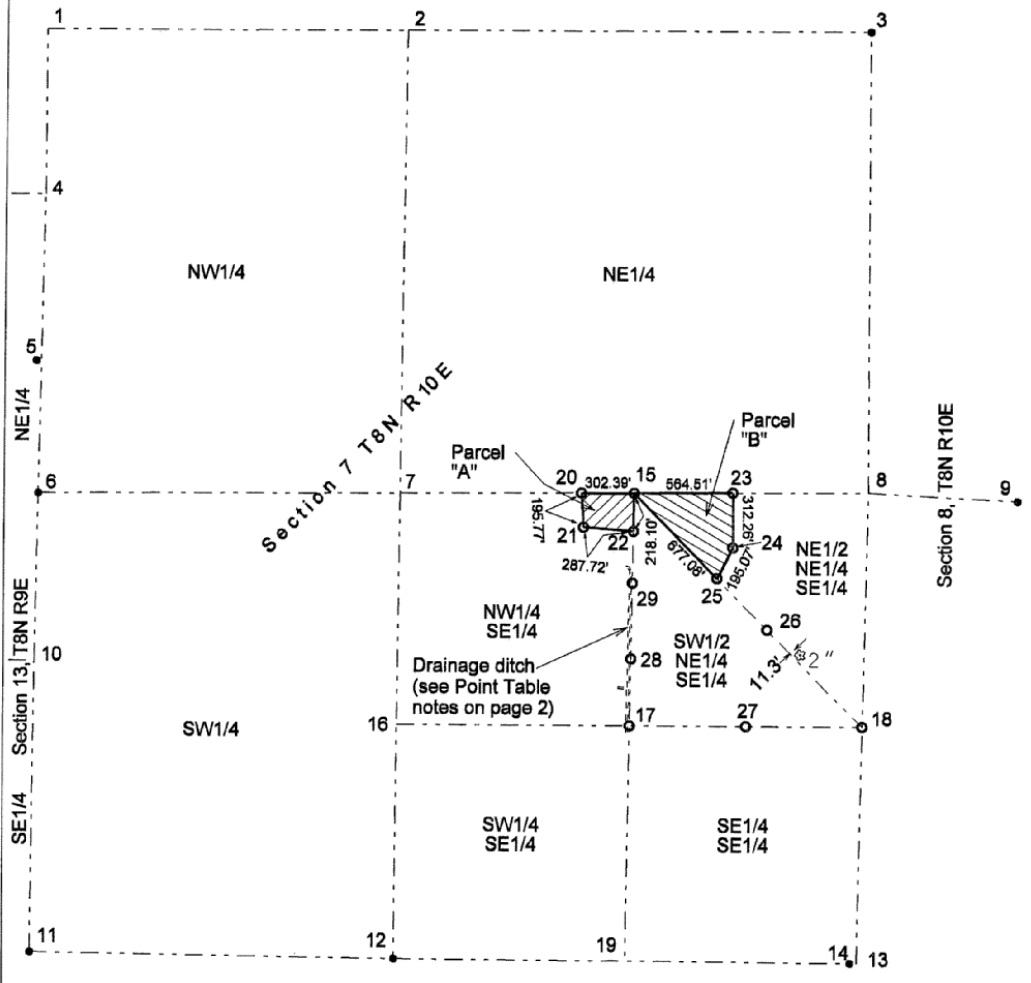


- LEGEND:**
- Found monument
 - Set monument (see point table)
 - ⊗ 2" Deciduous tree (trunk diameter in inches)

SURVEYED FOR:
Parks Division
City of Madison, WI
PO Box 2987
Madison, WI 53701
(608)266-4711

SURVEYED BY:
Dan Rodman, RLS
Parks Division
City of Madison, WI

- NOTES:**
1. Date(s) of field work: Nov. 6, 8, 9 & 13, 2007
 2. Tax parcel number(s):
0810-074-8500-4 (NW1/4 SE1/4;
contains Parcel "A")
0810-074-8000-9 (NE1/2 NE1/4 SE1/4;
contains Parcel "B")
 3. The purpose of this plat of survey is to describe the lands affected by Dane County Circuit Court Case Number 07CV3296.
 4. All surface and subsurface improvements, trees, hedges and ground cover on and adjacent to the site are not necessarily shown.
 5. Except as specifically stated or shown, this map does not show easements, building setbacks, zoning and land use restrictions, covenants, or any other restrictions or benefits that a current and accurate title search may disclose.
 5. See Page 2 for metes and bounds descriptions of Parcel "A" and Parcel "B".
 6. See Point Table and Line Table on Page 3 for coordinates and dimensions.



PLAT OF SURVEY - CHEROKEE MARSH CONSERVATION PARK

Part of Section 7, T8N R10E, Town of Burke, Dane County, WI

METES AND BOUNDS DESCRIPTIONS

Parcel "A":

Part of the Northwest 1/4 of the Southeast 1/4 of Section 7, Township 8 North, Range 10 East, in the Town of Burke, Dane County, Wisconsin, more particularly described as follows:

Commencing at the Southeast corner of said Section 7;
thence N01°08'13"E along the East line of the Southeast 1/4 of said Section 7, 2,676.32 feet to the East 1/4-corner of said Section 7;
thence S89°43'10"W along the East-West 1/4-line of said Section 7, 1,339.74 feet to the Northeast corner of the Northwest 1/4 of the Southeast 1/4 of said Section 7, and the point of beginning;
thence S00°49'13"W along the East line of the Northwest 1/4 of the Southeast 1/4 of said Section 7, 218.10 feet;
thence N85°48'14"W, 287.72 feet;
thence N03°36'31"W, 195.77 feet to the North line of the Northwest 1/4 of the Southeast 1/4 of said Section 7;
thence N89°43'10"E along said North line, 302.39 feet to the point of beginning.
Containing 60,871 square feet or 1.3974 acres, more or less.

Description based on Plat of Survey dated November 14, 2007 by Dan Rodman, RLS 2793, City of Madison WI Parks Division.


Parcel "B":

Part of the triangular Northeast 1/2 of the Northeast 1/4 of the Southeast 1/4 of Section 7, Township 8 North, Range 10 East, in the Town of Burke, Dane County, Wisconsin, more particularly described as follows:

Commencing at the Southeast corner of said Section 7;
thence N01°08'13"E along the East line of the Southeast 1/4 of said Section 7, 2,676.32 feet to the East 1/4-corner of said Section 7;
thence S89°43'10"W along the East-West 1/4-line of said Section 7, 1,339.74 feet to the Northwest corner of the triangular Northeast 1/2 of the Northeast 1/4 of the Southeast 1/4 of said Section 7, and the point of beginning;
thence N89°43'10"E back along said East-West 1/4-line, 564.51 feet;
thence S00°21'29"E, 312.26 feet;
thence S27°48'06"W, 195.07 feet to the Southwest line of the triangular Northeast 1/2 of the Northeast 1/4 of the Southeast 1/4 of said Section 7;
thence N44°36'23"W along said Southwest line, 677.08 feet to the point of beginning.
Containing 151,086 square feet or 3.4685 acres, more or less.

Description based on Plat of Survey dated November 14, 2007 by Dan Rodman, RLS 2793, City of Madison WI Parks Division.

I, Daniel C. Rodman, Registered Land Surveyor Number 2793, certify that this survey was executed under my direction and control, and that it meets the Minimum Standards for Property Surveys of the Wisconsin Administrative Code (AE 7), and that this map is correct to the best of my knowledge and belief.

Signed: 

Date: 11/14/2007



PLAT OF SURVEY - CHEROKEE MARSH CONSERVATION PARK

Part of Section 7, T8N R10E, Town of Burke, Dane County, WI

POINT TABLE & NOTES:
 1) Coordinates are in the NAD83(1997) Datum, computed using Real Time Kinematic Global Positioning System (RTK GPS) techniques from the City of Madison base station at 43°03'17.13258"N latitude, 89°22'57.67569"W longitude, NAD83(1997) datum (Easting = 821567.38 US survey feet, Northing = 475567.53 US survey feet). The Wisconsin Coordinate Reference Systems (WISCRS) parameters were used to compute Easting and Northing coordinates in the Dane County Coordinate System. See http://gis.cityofmadison.com/Madison_GPS_and_www.sco.wisc.edu/coordinates/.
 2) Coordinates are shown to 0.0001 foot and 0.00001" only to enable confirmation of bearing computations. Coordinates are not actually known to 0.0001 ft and 0.00001".
 3) Monument dimensions in inches, outside diameter (unless noted). Pipes are at least 18 inches long.

PT	Northing	Easting	Latitude	Longitude	Monument	Note
1	521132.8500	827084.5200	43°10'42.12974"	89°21'42.79333"	Computed corner, NE corner Section 7 T8N R10E	
2	521136.7500	829156.7400	43°10'47.15268"	89°21'44.96227"	Computed corner, N 1/4 corner Section 7 T8N R10E	
3	521141.7600	831806.5800	43°10'47.17938"	89°20'39.20081"	Found brass cap in concrete, NW corner Section 7 T8N R10E	
4	520203.4800	827083.4500	43°10'37.95086"	89°21'42.81684"	Computed corner, NE corner Section 13 T8N R9E	
5	519255.7800	827076.2400	43°10'28.59105"	89°21'43.05828"	Found brass cap in concrete, Meander corner, set on Section 13 line in 1968; now 0.15 ft west of line	
6	518507.6700	827062.9300	43°10'21.20246"	89°21'43.24513"	Found brass cap in concrete, Meander corner, set on Section 7 T8N R10E	
7	518517.8200	829133.8800	43°10'21.28708"	89°21'15.29942"	Computed corner, Center Section 7 T8N R10E	
8	518530.9400	831813.3200	43°10'21.39364"	89°20'39.14261"	Computed corner, E corner Section 7, T8N R10E (under water in marsh; see Point 9)	
9	518487.3300	832668.1900	43°10'20.95491"	89°20'27.60747"	Found brass cap in concrete, E corner Section 7, T8N R10E (Point 8). Monument now S87°04'46"E, 855.98 ft from said E corner. 855 ft from E corner Section 7, T8N R10E (Point 8). Monument now S87°04'46"E, 855.98 ft from said E corner.	
10	517550.5300	827045.7000	43°10'11.74941"	89°21'43.48689"	Brass cap in concrete, Position per monument record dated March 21, 2007 by Carl Sandsnes	
11	515897.9000	827027.2700	43°09'55.42736"	89°21'43.75155"	Found concrete monument 0.5 ft below path, cap broken off. SW corner Section 7 T8N R10E	
12	515869.2800	829110.7500	43°09'55.12901"	89°21'15.64045"	Found brass cap in concrete, SE corner Section 7 T8N R10E	
13	515885.1500	831760.2100	43°09'54.96674"	89°20'39.89587"	Found brass cap in concrete, SE corner Section 7 T8N R10E	
14	515855.1500	831759.9800	43°09'54.96674"	89°20'37.22102"	Set 2-3/8" pipe, 1 ft below surface; Monument 0.23 ft west of computed corner (point 13), based on witness ties.	
15	518524.3800	830473.6000	43°10'21.34076"	89°21'15.47001"	Computed corner, SW corner of NE 1/4 of SE 1/4 Section 7, T8N R10E	
16	517193.5500	829122.3100	43°10'08.20805"	89°20'57.49383"	Computed corner, NW corner of NE 1/4 of SE 1/4 Section 7, T8N R10E	
17	517193.3000	830454.5400	43°10'08.19454"	89°20'39.51764"	Set steel T-post (in marsh); SW corner of NE 1/4 of SE 1/4 Section 7, T8N R10E (East bank of ditch is 11 ft west of line)	
18	517193.0500	831786.7700	43°10'08.18024"	89°20'57.76660"	Computed corner, SE corner of NE 1/4 of SE 1/4 Section 7, T8N R10E	
19	515862.2100	830435.4800	43°09'55.04821"	89°21'01.30146"	Computed corner, SE corner of SE 1/4 of SE 1/4 Section 7, T8N R10E	
20	515822.8800	830171.2146	43°10'21.32870"	89°21'01.30146"	Set 2-3/8" pipe; On N line of NW 1/4 of SE 1/4 Section 7, T8N R10E	
21	518327.5180	830183.5360	43°10'19.39893"	89°21'01.13745"	Set 2-3/8" pipe; On W line of NE 1/4 of SE 1/4 Section 7, T8N R10E	
22	518306.2982	830470.4774	43°10'19.18690"	89°20'57.26572"	Set 2-3/8" pipe; On N line of NE 1/4 of SE 1/4 Section 7, T8N R10E	
23	518527.1450	831038.1001	43°10'21.36314"	89°20'49.60356"	Set 2-3/8" pipe; On SW line of NE 1/4 of SE 1/4 Section 7, T8N R10E	
24	518214.8870	831040.0510	43°10'18.27912"	89°20'49.58101"	Set 2-3/8" pipe; On SW line of NE 1/2 of NE 1/4 of SE 1/4 Section 7, T8N R10E	
25	518042.3342	830949.0681	43°10'16.57571"	89°20'50.81080"	Set 2-3/8" pipe; On S line of NE 1/4 of SE 1/4 Section 7, T8N R10E	
26	517748.8408	831238.5569	43°10'13.67446"	89°20'46.90807"	Set steel T-post (in marsh); On W line of NE 1/4 of SE 1/4 Section 7, T8N R10E	
27	517193.1718	831120.7330	43°10'08.18746"	89°20'48.50468"	Set steel T-post (in marsh); On W line of NE 1/4 of SE 1/4 Section 7, T8N R10E (East bank of ditch is 7 feet west of line)	
28	517590.3990	830460.0831	43°10'12.01767"	89°20'57.41449"	Set steel T-post (in marsh); On W line of NE 1/4 of SE 1/4 Section 7, T8N R10E (East bank of ditch is 5 feet west of line)	
29	518013.2590	830466.2813	43°10'16.29275"	89°20'57.32578"	Set steel T-post (in marsh); On W line of NE 1/4 of SE 1/4 Section 7, T8N R10E	

LINE TABLE
(See Point Table)

Section 7 - Perimeter

Fr To	Bearing	Distance
1 2	N89°53'30"E	2,062.22 ft
2 3	N89°53'30"E	2,649.84 ft
3 8	S00°08'52"E	2,610.83 ft
8 9	S87°04'47"E	855.98 ft
8 13	S01°08'13"W	2,676.32 ft
13 12	N89°41'40"W	2,649.50 ft
12 11	N89°12'47"W	2,083.68 ft
11 10	N00°38'20"E	1,652.73 ft
10 6	N01°01'53"E	957.30 ft
6 4	N01°01'52"E	1,696.08 ft
6 4	N01°02'25"E	947.86 ft
4 1	N00°03'57"E	929.37 ft

Section 7 - Interior

Fr To	Bearing	Distance
2 7	S00°30'00"W	2,619.03 ft
7 12	S00°30'01"W	2,648.64 ft
6 7	N89°43'09"E	2,070.97 ft
7 8	N89°43'10"E	2,679.47 ft

SE 1/4 Section 7 - Perimeter

Fr To	Bearing	Distance
7 15	N89°43'10"E	1,339.74 ft
15 8	N89°43'10"E	1,339.74 ft
8 18	S01°08'13"W	1,338.15 ft
18 13	S01°08'14"W	1,338.16 ft
13 19	N89°41'41"W	1,324.75 ft
19 12	N89°41'39"W	1,324.75 ft
12 16	N00°30'01"E	1,324.32 ft
16 7	N00°30'02"E	1,324.32 ft

SE 1/4 Section 7 - Interior

Fr To	Bearing	Distance
15 17	S00°49'13"W	1,331.22 ft
17 19	S00°49'13"W	1,331.23 ft
16 17	S89°59'21"E	1,332.23 ft
17 18	S89°59'21"E	1,332.23 ft

Parcel "A" - Tie & Perimeter

Fr To	Bearing	Distance
13 8	N01°08'13"E	2,676.32 ft
8 15	S89°43'10"W	1,339.74 ft
15 22	S00°49'13"W	218.10 ft
22 21	N85°46'14"W	287.72 ft
21 20	N03°36'31"W	195.77 ft
20 15	N89°43'10"E	302.39 ft

Parcel "B" - Tie & Perimeter

Fr To	Bearing	Distance
13 8	N01°08'13"E	2,676.32 ft
8 15	S89°43'10"W	1,339.74 ft
15 23	N89°43'10"E	564.51 ft
23 24	S00°21'29"E	312.26 ft
24 25	S27°48'06"W	195.07 ft
25 15	N44°36'23"W	677.08 ft

