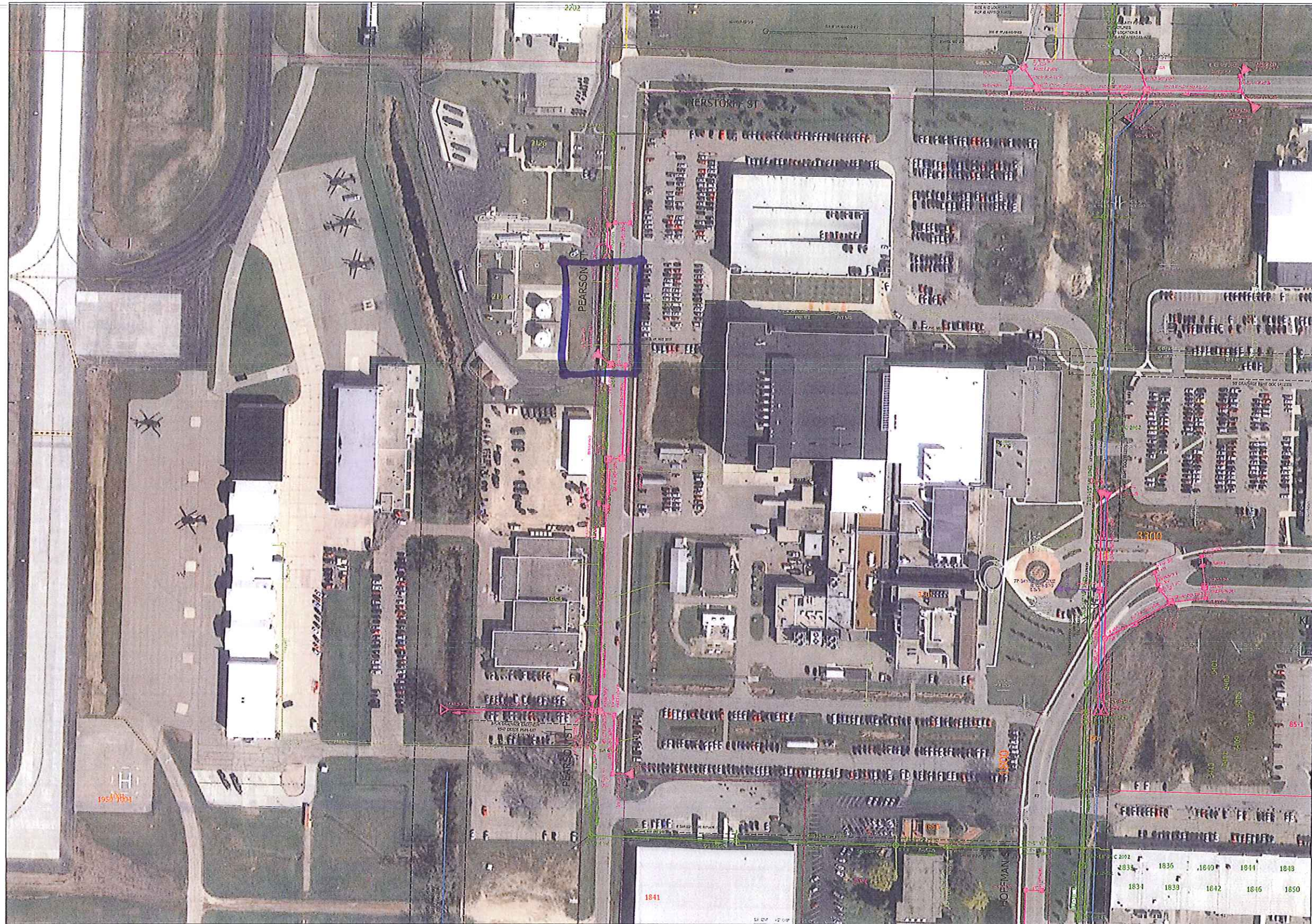


875																			875
870																			870
865																			865
860			(RS-1) REMOVE EX AE 6028-007 E1=856.84	(S-2) FIELD BEND W/ MARKER BALL STA 10+35.19						(RS-2) REMOVE EX AE 6028-011 E1=857.64									860
855			EX IN 6028-006 TO REMAIN IC=859.29 E1=855.62	(S-1) INSTALL CONCRETE COLLAR & MARKER BALL STA 10+29.15	176' 12" RCP @ 0.50%					(S-3) INSTALL CONCRETE COLLAR & MARKER BALL STA 12+05.37									855
850																			850
845																			845
840																			840
835	9+00																		835



**City of Madison, WI - GIS/Mapping data**

Printed By: enea

Disclaimer: The City makes no representation about the accuracy of these records and shall not be liable for any damages