

# Lisa Link Peace Park

Madison, WI

Urban Design Commission

---

09.09.09



# SITE - LIGHTING PHOTOMETRICS

NO SCALE



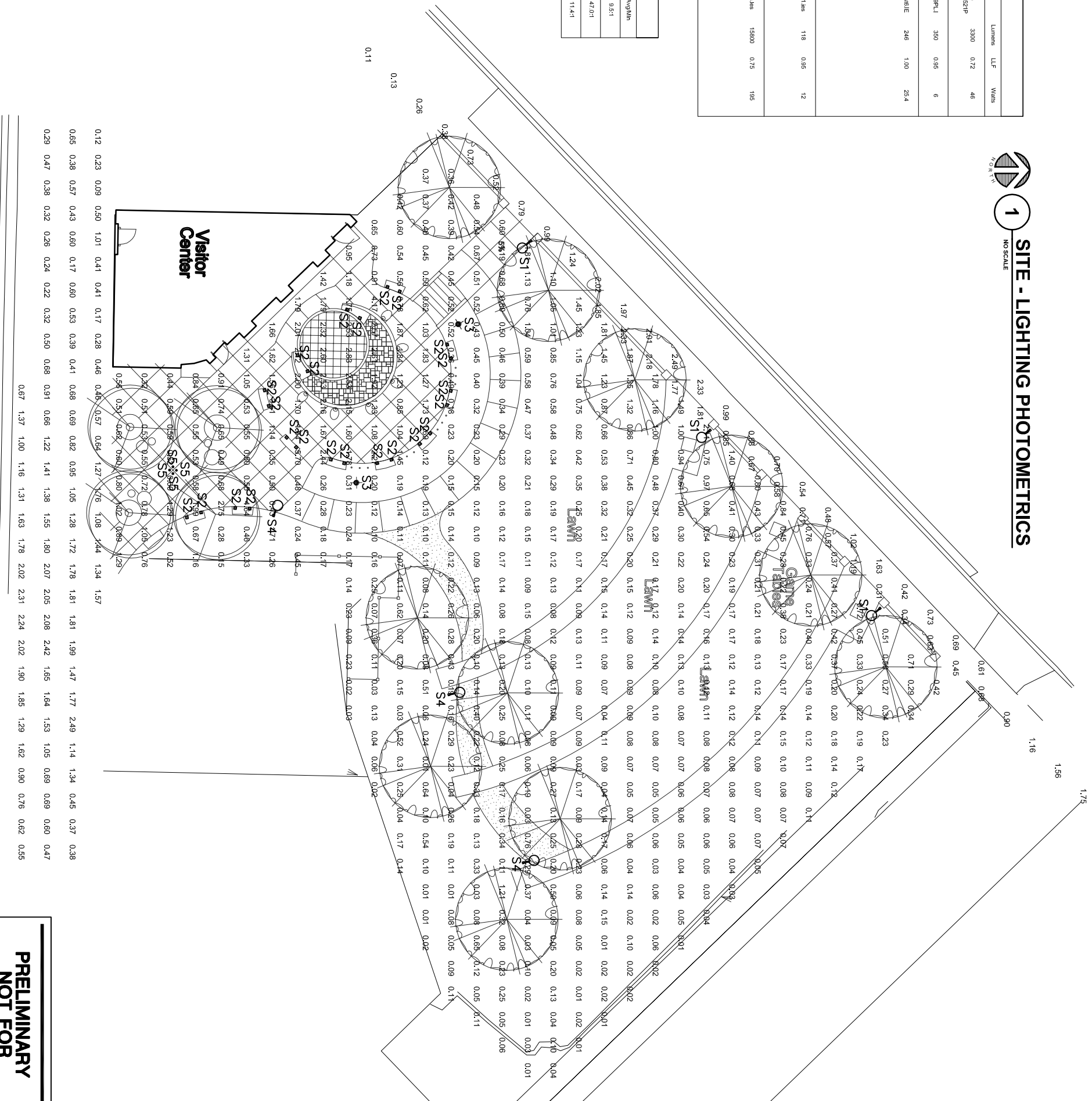
Consultants

Symbol	Label	Qty	Catalog Number	Description	Lamp	Fps	Lumens	LFt	Watts
⬤	S1	9	King Luminaire Model 9015-105 KPL10	STATE STREET CUSTOM LIGHT POLE	39 W T8 CERAMIC METAL HALIDE	Sheet CR21P 48	3300	0.72	46
▬	S2	24		Streetlight	LED	FCSL101PLJ ES	360	0.66	6
⊙	S3	8	Coldwhite 4000K-LED-1000004	CAST METAL HOUSING GENERAL INTERIOR FINISH, FROSTED FLAT GLASS LENS ONE SIDE, 18 LEDS CONTAINING THE AND OPTICAL ASSEMBLIES.	EIGHTEEN LIGHT SOURCE (LED'S) - 8 RED, 6 GREEN, 6 BLUE, EACH LED HAS A CONICAL BEAM ANGLE OF 30 DEGREES ENCOMPASSING THE LAMP VERTICAL BASE. UP POSITION INPUT TO FOOT POWER CORD LEADING TO THE LED ASSEMBLY.	ColortuneLite S	246	1.00	25.4
▬	F8	16	HL-1HW41	HIGH/LITE NEUTRAL (4100K) LED 1"x7" STRIP LUMINAIRE	(12) 4100K WHITE LEDS, LUMEN OUTPUT = 118 LM'S. VOLTS OCCUPANT TO THE LED ASSEMBLY.	HL-1HW41 1ms	118	0.65	12
⊞	E4H1	5	A927150P500X	ARCHITECTURE CUTOFF LUMINAIRE DIE CAST ALUM HOUSING & LENS FRAME PLAT GLASS DIE SHEET MULTIFACETED SPECULAR REF. PANELS	160 W HPS F18 CLEAR HOG BASE HORIZONTAL POSITION TEST RATED AT 16900 INITIAL LUMENS	AH2654x4	16900	0.75	195

Description	Symbol	Avg	Max	Min	Max/Min	Avg/Min
Gorman Street	+	1.04 fc	2.48 fc	0.11 fc	22.6:1	9.3:1
Link Link Sign	+	0.47 fc	5.70 fc	0.01 fc	570:0:1	47:0:1
State Street	+	1.03 fc	2.48 fc	0.09 fc	277:1	11.4:1

Name	# Luminaires	Total Watts	Area	Density
Link Link Sign Lighting	54	815.20 W	15339.92 ft <sup>2</sup>	0.05 W/ft <sup>2</sup>

**LIGHTING CONTROL**  
Luminaire type S1, S2 and S4 will be controlled via a dusk-to-dawn photocell for safety and security. Types F8, E4H1 and S3 will be controlled via a photocell. All lighting control systems located within the visitor's center. Manual override will be available for special events.



0' 10' 20' 40' Scale 1"=20'

NORTH

**Elizabeth Link Peace Park Redevelopment**  
229 W. Gilman Street, Madison, WI

Project No. 6340  
Drawn By JFH  
Checked By  
Date 07-15-09

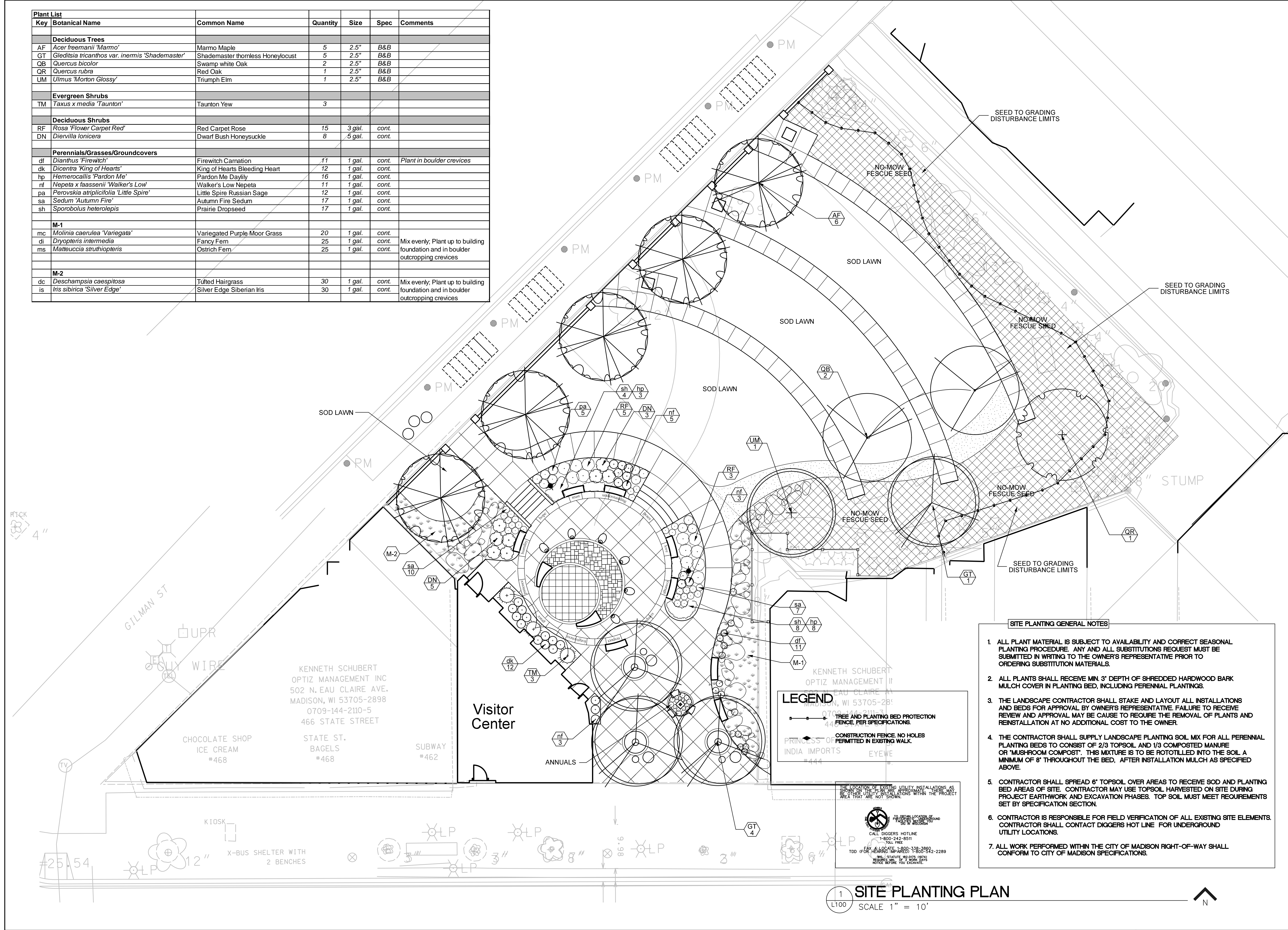
SHEET TITLE  
**SITE - PHOTOMETRICS**

Sheet No. **EL 100**

**PRELIMINARY NOT FOR CONSTRUCTION**



Key	Botanical Name	Common Name	Quantity	Size	Spec	Comments
<b>Deciduous Trees</b>						
AF	<i>Acer freemanii</i> 'Marmo'	Marmo Maple	5	2.5"	B&B	
GT	<i>Gleditsia tricanthos</i> var. <i>inermis</i> 'Shademaster'	Shademaster thornless Honeylocust	5	2.5"	B&B	
QB	<i>Quercus bicolor</i>	Swamp white Oak	2	2.5"	B&B	
QR	<i>Quercus rubra</i>	Red Oak	1	2.5"	B&B	
UM	<i>Ulmus</i> 'Morton Glossy'	Triumph Elm	1	2.5"	B&B	
<b>Evergreen Shrubs</b>						
TM	<i>Taxus x media</i> 'Taunton'	Taunton Yew	3			
<b>Deciduous Shrubs</b>						
RF	<i>Rosa</i> 'Flower Carpet Red'	Red Carpet Rose	15	3 gal.	cont.	
DN	<i>Diervilla lonicera</i>	Dwarf Bush Honeysuckle	8	5 gal.	cont.	
<b>Perennials/Grasses/Groundcovers</b>						
df	<i>Dianthus</i> 'Firewitch'	Firewitch Carnation	11	1 gal.	cont.	Plant in boulder crevices
dk	<i>Dicentra</i> 'King of Hearts'	King of Hearts Bleeding Heart	12	1 gal.	cont.	
hp	<i>Hemerocallis</i> 'Pardon Me'	Pardon Me Daylily	16	1 gal.	cont.	
nf	<i>Nepeta x faassenii</i> 'Walker's Low'	Walker's Low Nepeta	11	1 gal.	cont.	
pa	<i>Perovskia atriplicifolia</i> 'Little Spire'	Little Spire Russian Sage	12	1 gal.	cont.	
sa	<i>Sedum</i> 'Autumn Fire'	Autumn Fire Sedum	17	1 gal.	cont.	
sh	<i>Sporobolus heterolepis</i>	Prairie Dropseed	17	1 gal.	cont.	
<b>M-1</b>						
mc	<i>Molinia caerulea</i> 'Variegata'	Variiegated Purple Moor Grass	20	1 gal.	cont.	
di	<i>Dryopteris intermedia</i>	Fancy Fern	25	1 gal.	cont.	Mix evenly; Plant up to building foundation and in boulder outcropping crevices
ms	<i>Matteuccia struthiopteris</i>	Ostrich Fern	25	1 gal.	cont.	
<b>M-2</b>						
dc	<i>Deschampsia caespitosa</i>	Tufted Hairgrass	30	1 gal.	cont.	Mix evenly; Plant up to building foundation and in boulder outcropping crevices
is	<i>Iris sibirica</i> 'Silver Edge'	Silver Edge Siberian Iris	30	1 gal.	cont.	

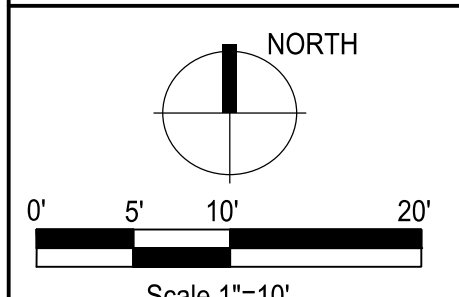


- SITE PLANTING GENERAL NOTES**
- ALL PLANT MATERIAL IS SUBJECT TO AVAILABILITY AND CORRECT SEASONAL PLANTING PROCEDURE. ANY AND ALL SUBSTITUTIONS REQUEST MUST BE SUBMITTED IN WRITING TO THE OWNER'S REPRESENTATIVE PRIOR TO ORDERING SUBSTITUTION MATERIALS.
  - ALL PLANTS SHALL RECEIVE MIN. 3" DEPTH OF SHREDDED HARDWOOD BARK MULCH COVER IN PLANTING BED, INCLUDING PERENNIAL PLANTINGS.
  - THE LANDSCAPE CONTRACTOR SHALL STAKE AND LAYOUT ALL INSTALLATIONS AND BEDS FOR APPROVAL BY OWNER'S REPRESENTATIVE. FAILURE TO RECEIVE REVIEW AND APPROVAL MAY BE CAUSE TO REQUIRE THE REMOVAL OF PLANTS AND REINSTALLATION AT NO ADDITIONAL COST TO THE OWNER.
  - THE CONTRACTOR SHALL SUPPLY LANDSCAPE PLANTING SOIL MIX FOR ALL PERENNIAL PLANTING BEDS TO CONSIST OF 2/3 TOPSOIL AND 1/3 COMPOSTED MANURE OR "MUSHROOM COMPOST". THIS MIXTURE IS TO BE ROTOTILLED INTO THE SOIL A MINIMUM OF 8" THROUGHOUT THE BED, AFTER INSTALLATION MULCH AS SPECIFIED ABOVE.
  - CONTRACTOR SHALL SPREAD 6" TOPSOIL OVER AREAS TO RECEIVE SOD AND PLANTING BED AREAS OF SITE. CONTRACTOR MAY USE TOPSOIL HARVESTED ON SITE DURING PROJECT EARTHWORK AND EXCAVATION PHASES. TOP SOIL MUST MEET REQUIREMENTS SET BY SPECIFICATION SECTION.
  - CONTRACTOR IS RESPONSIBLE FOR FIELD VERIFICATION OF ALL EXISTING SITE ELEMENTS. CONTRACTOR SHALL CONTACT DIGGERS HOT LINE FOR UNDERGROUND UTILITY LOCATIONS.
  - ALL WORK PERFORMED WITHIN THE CITY OF MADISON RIGHT-OF-WAY SHALL CONFORM TO CITY OF MADISON SPECIFICATIONS.

**KEN SAIKI**  
DESIGN INC  
LANDSCAPE ARCHITECTS  
303 S. PATTERSON  
SUITE ONE  
MADISON, WI 53703  
Phone: 608 951-3900  
Fax: 608 951-2330  
www.ksd-la.com

Consultants

**Elizabeth Link Peace Park Redevelopment**  
229 W. Gilman Street, Madison, WI



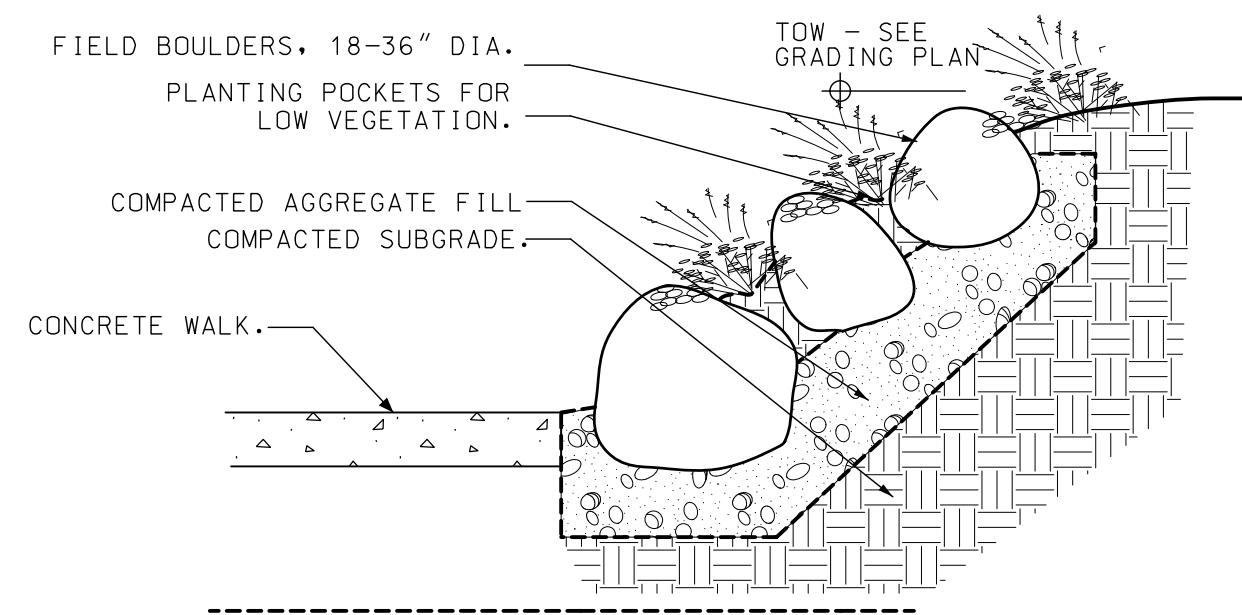
Issuance/Revision	Date

Project No.	6340
Drawn By	MS
Checked By	MS
Date	07-15-09
Sheet Title	PLANTING PLAN

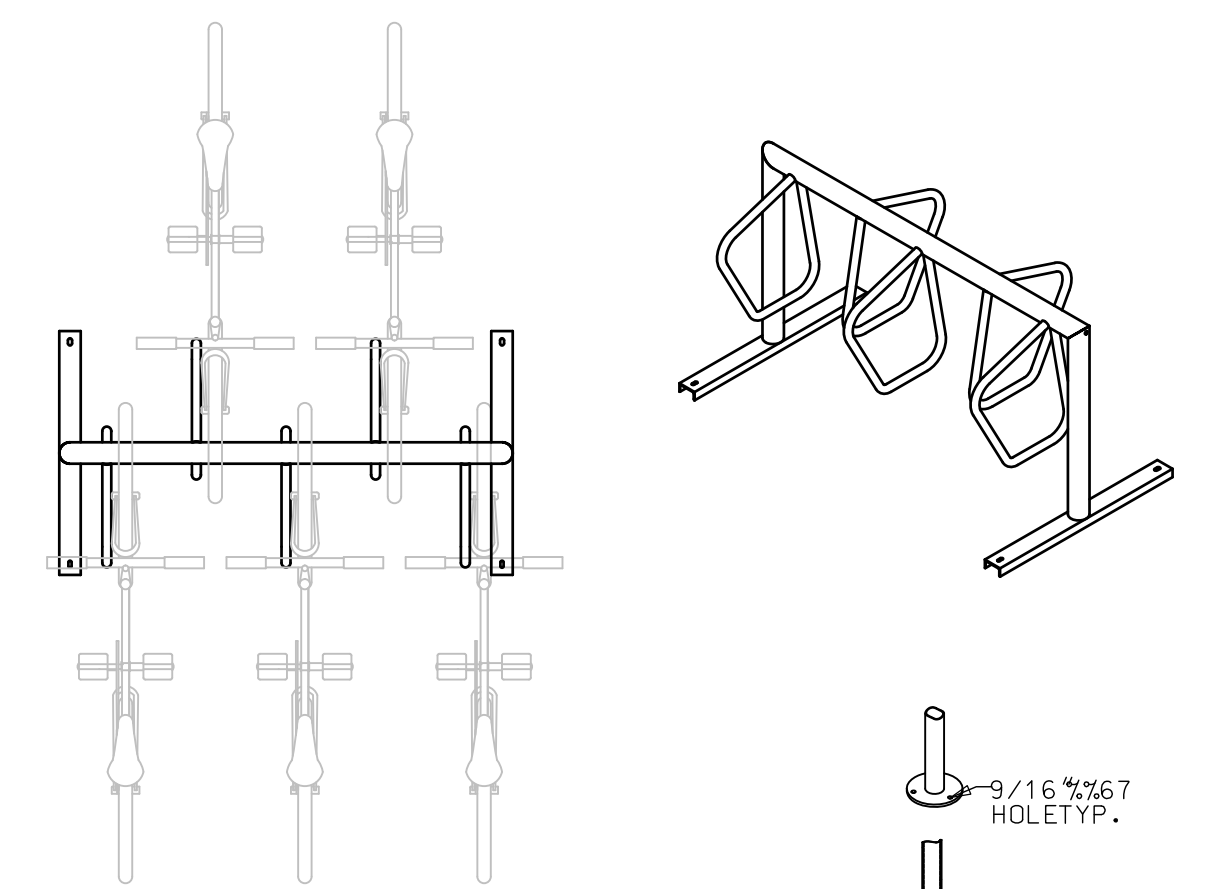
Sheet No.  
**L100**

**1 SITE PLANTING PLAN**  
SCALE 1" = 10'

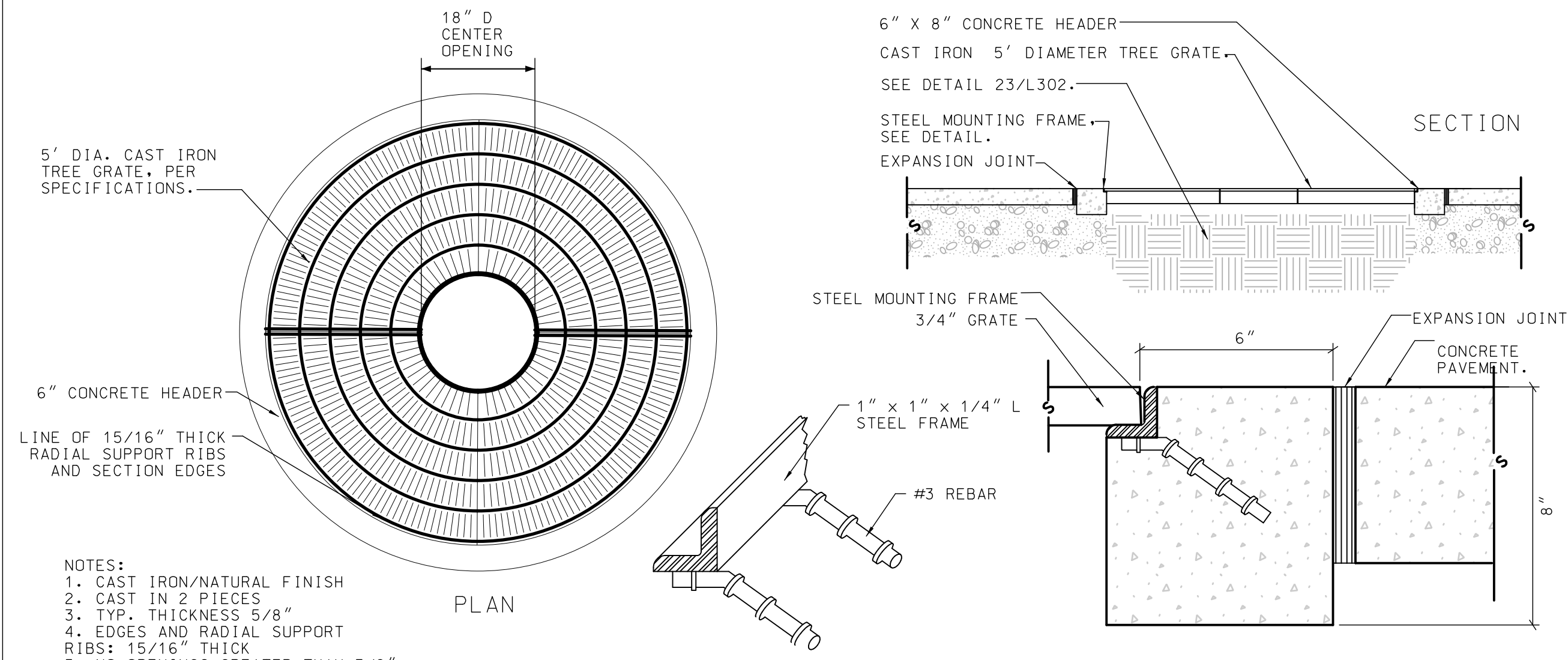




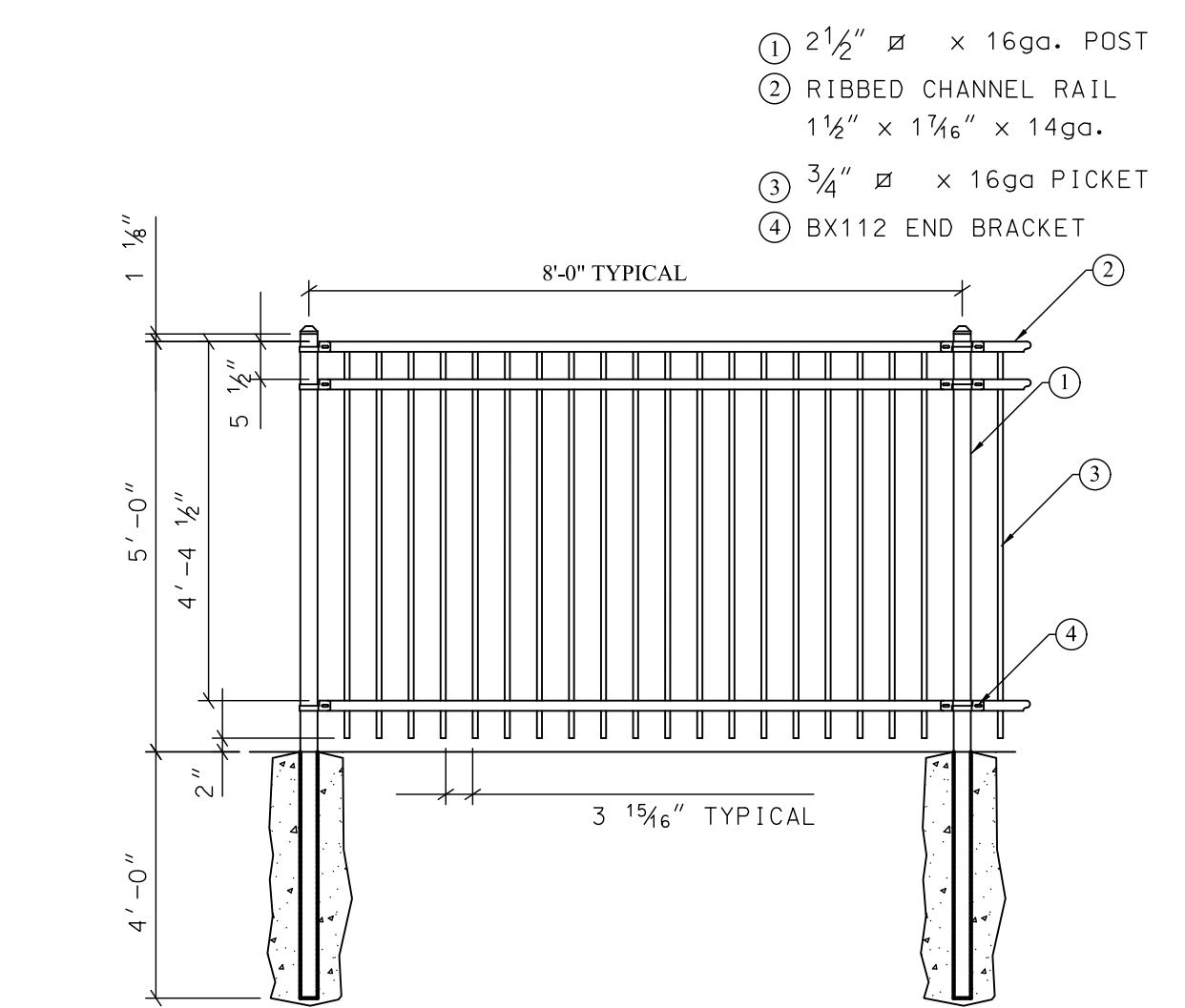
**1 PLANTED BOULDER WALL** **DETAIL**  
NOT TO SCALE



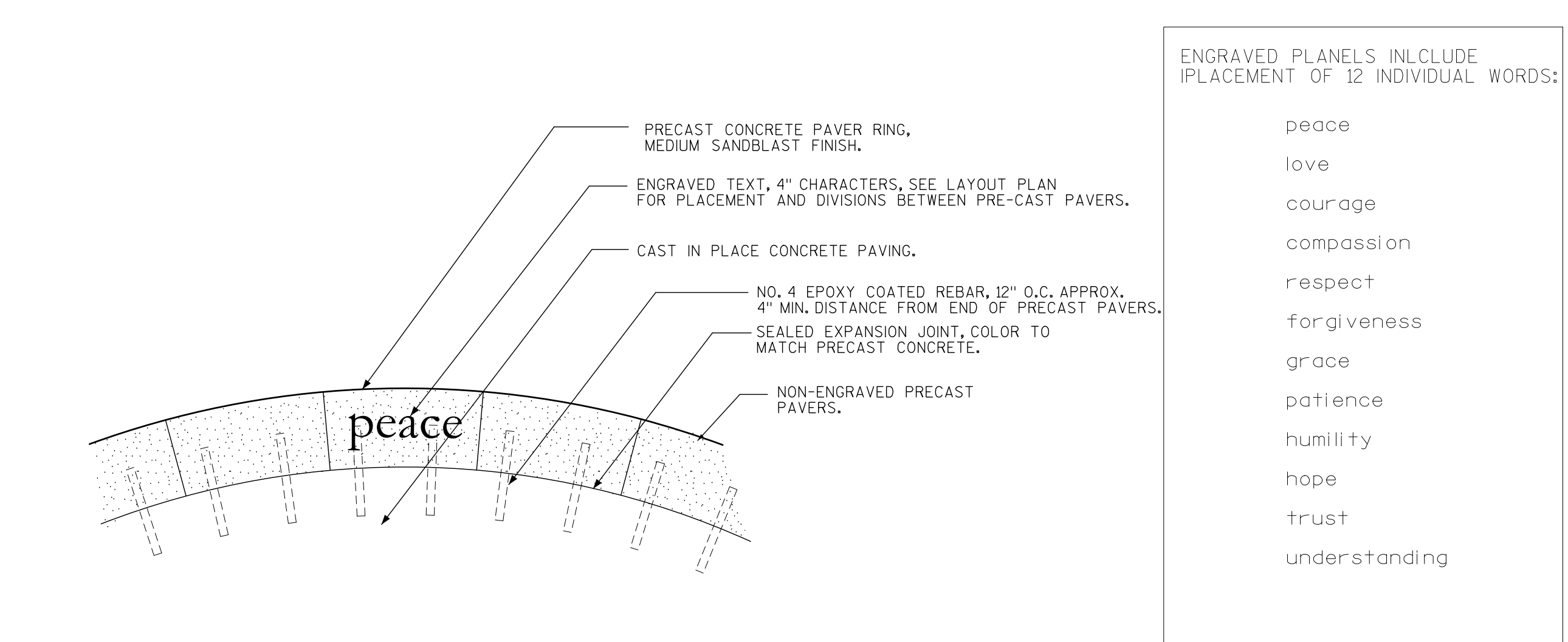
**2 BIKE RACKS** **DETAIL**  
NOT TO SCALE



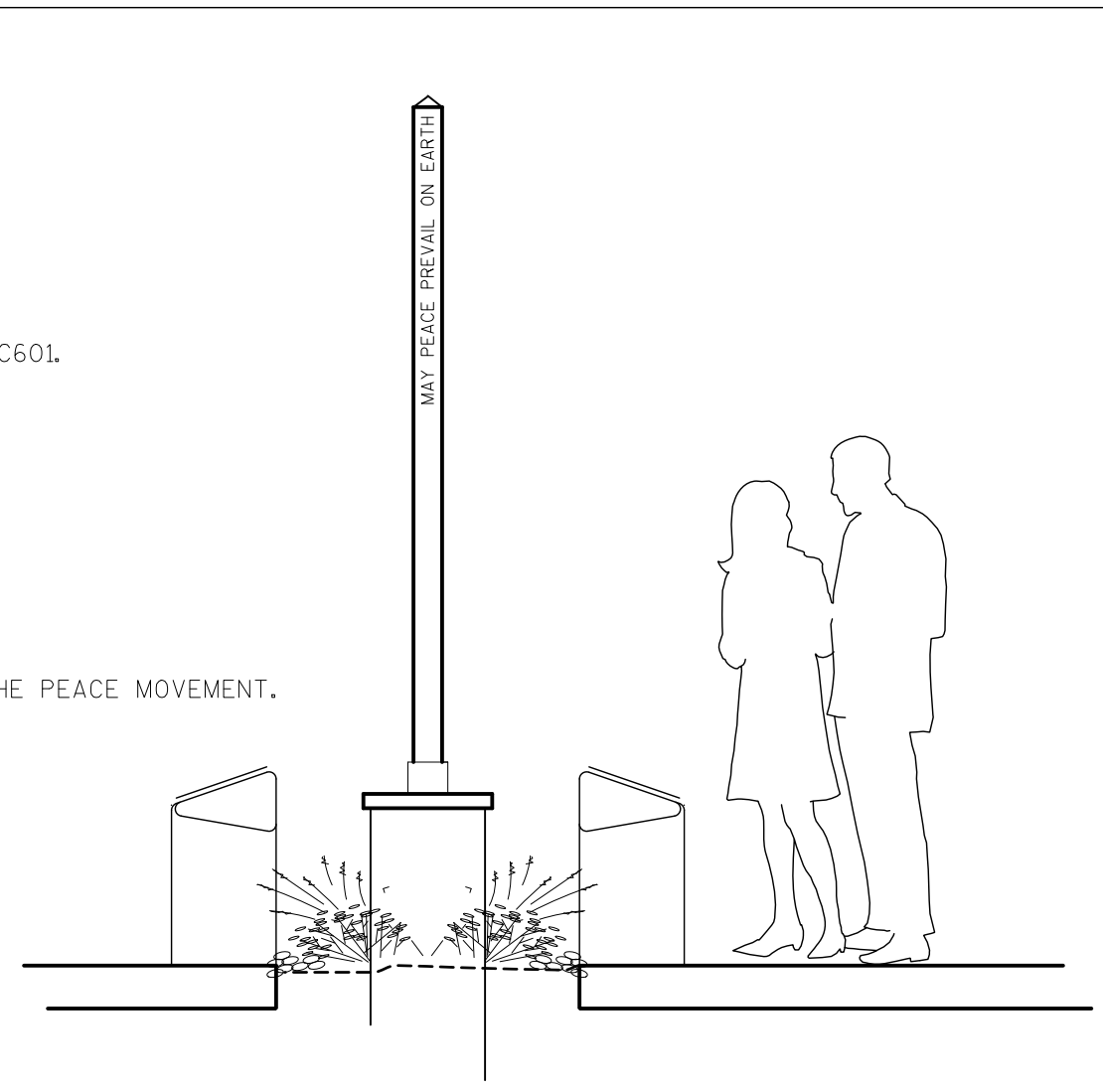
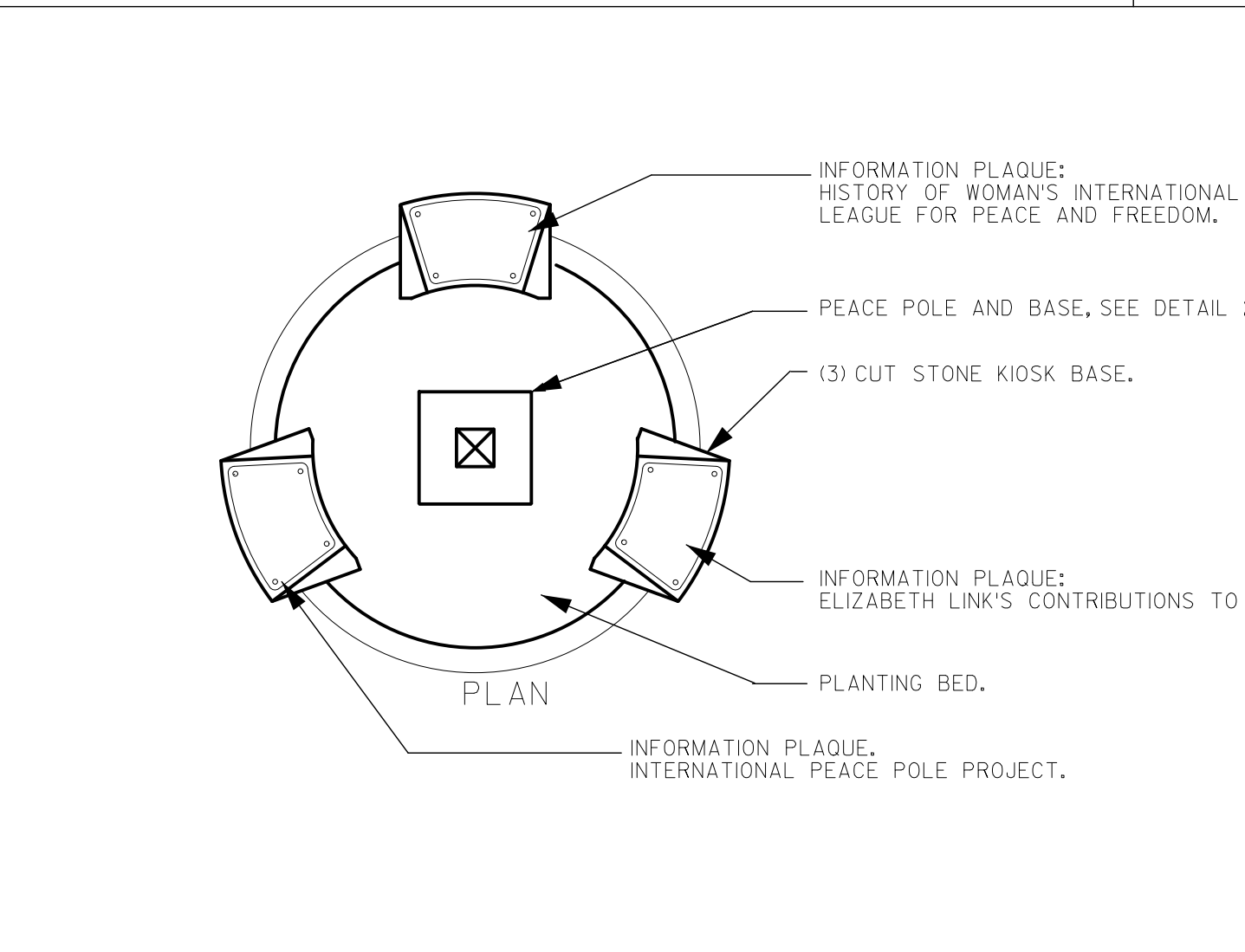
**3 TREE GRATE** **DETAIL**  
NOT TO SCALE



**4 STEEL FENCE** **DETAIL**  
NOT TO SCALE



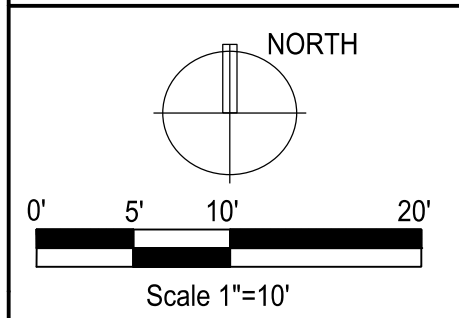
**5 ENGRAVED PEACE RING** **DETAIL**  
NOT TO SCALE



**6 PEACE POLE KIOSK** **DETAIL**  
NOT TO SCALE

Consultants

**Elizabeth Link Peace Park Redevelopment**  
229 W. Gilman Street, Madison, WI

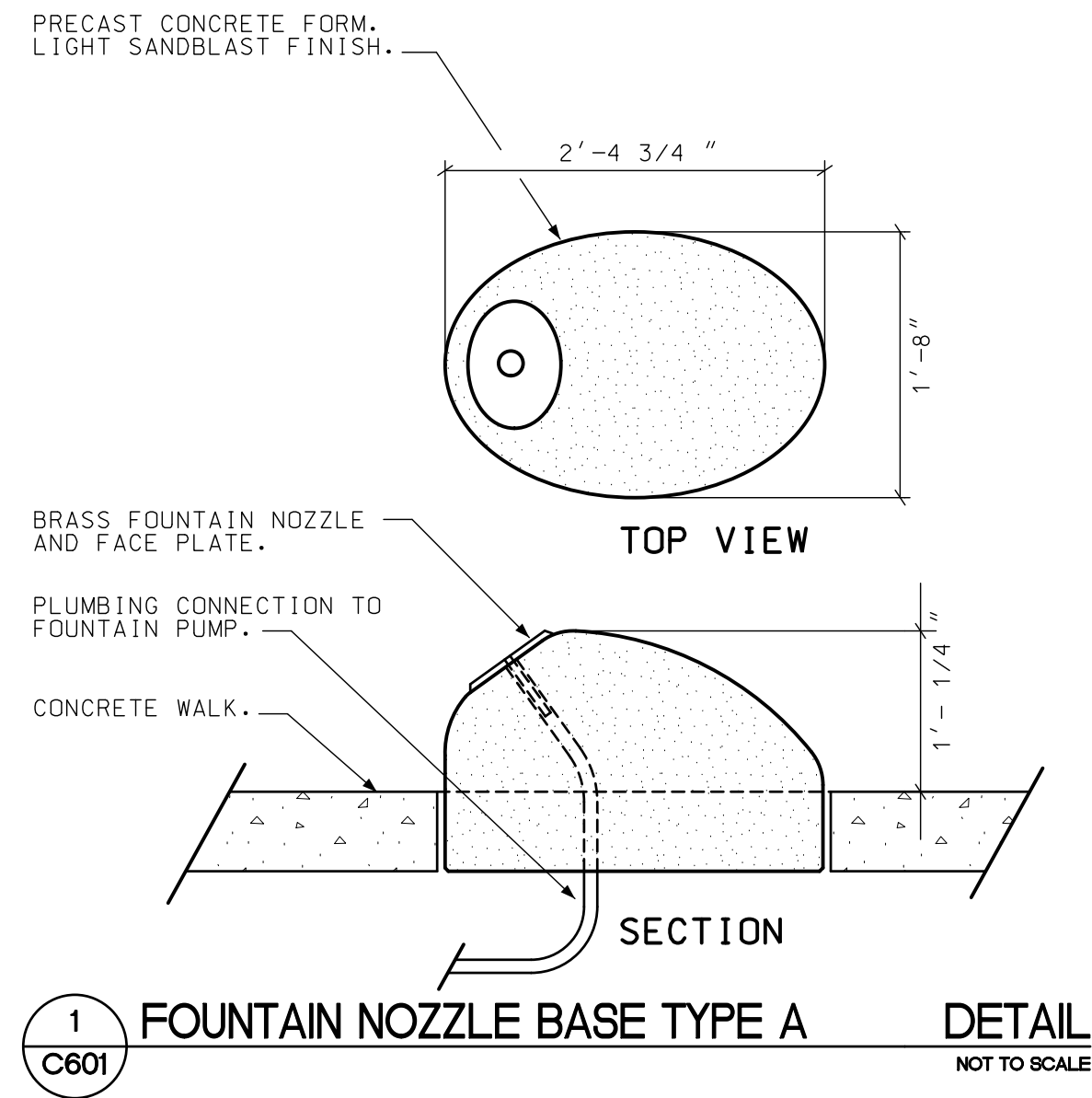


Issuance/Revision	Date

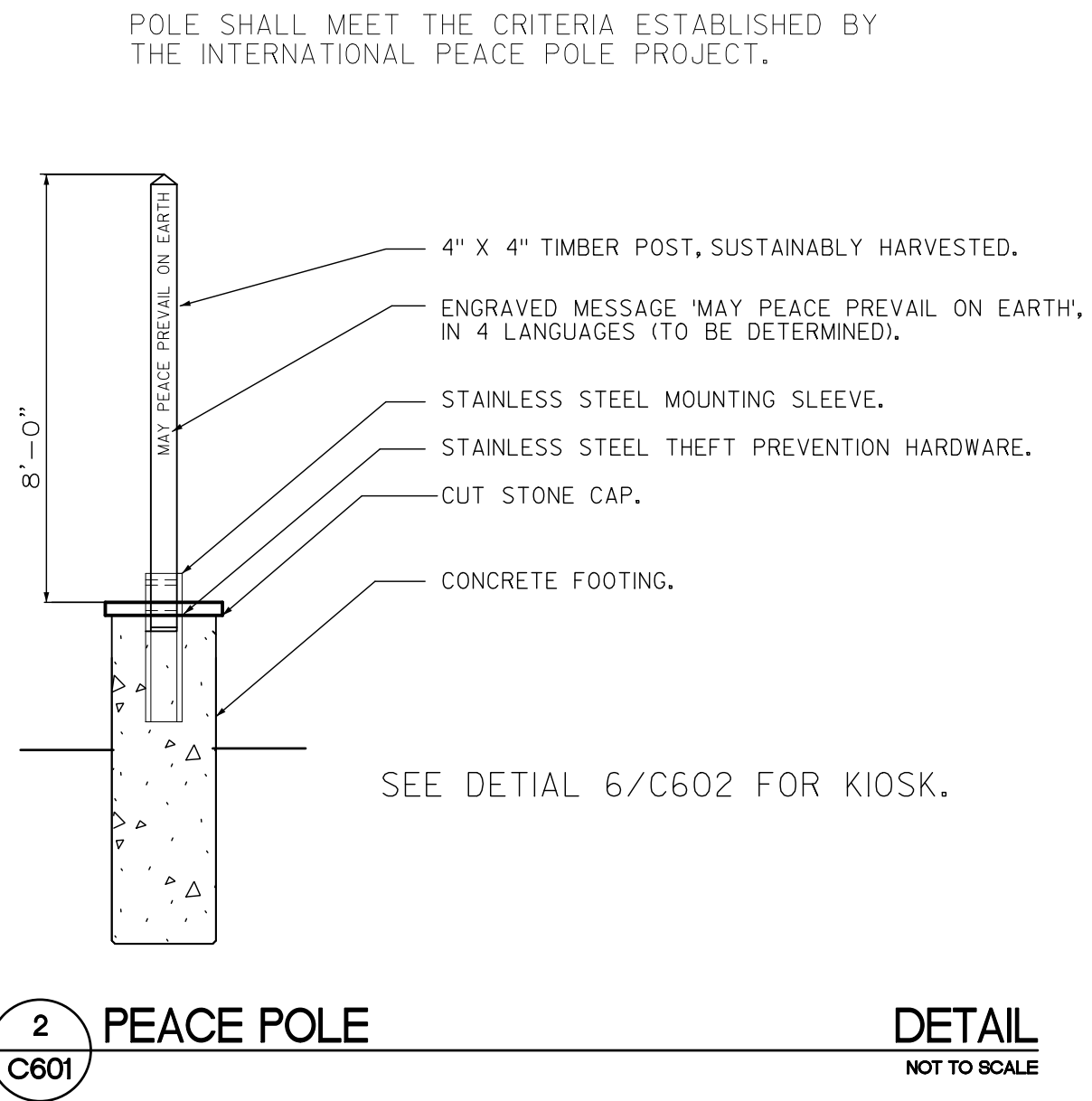
Project No.	6340
Drawn By	MS
Checked By	MS
Date	07-15-09
Sheet Title	

SITE DETAILS

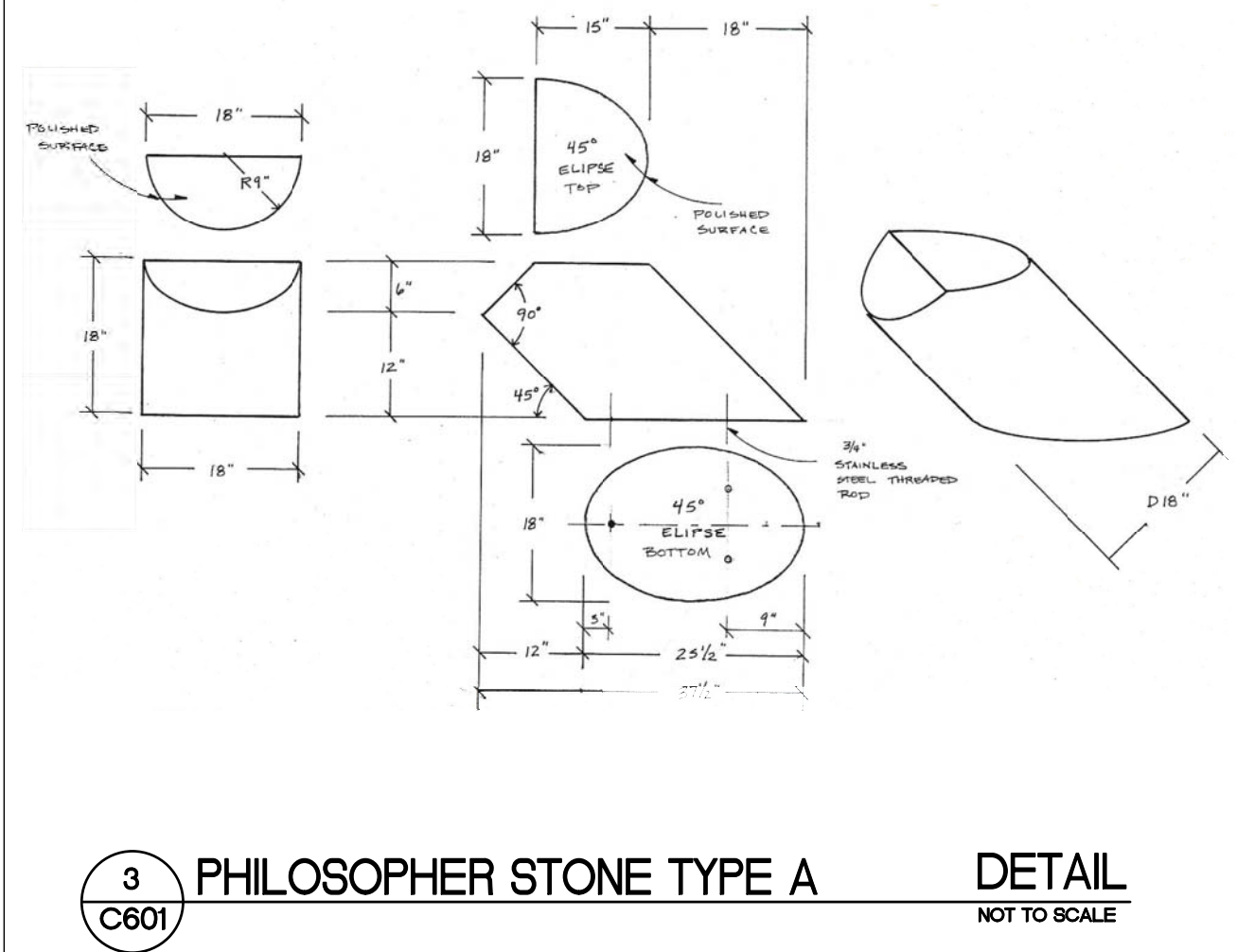
Sheet No.  
**C602**



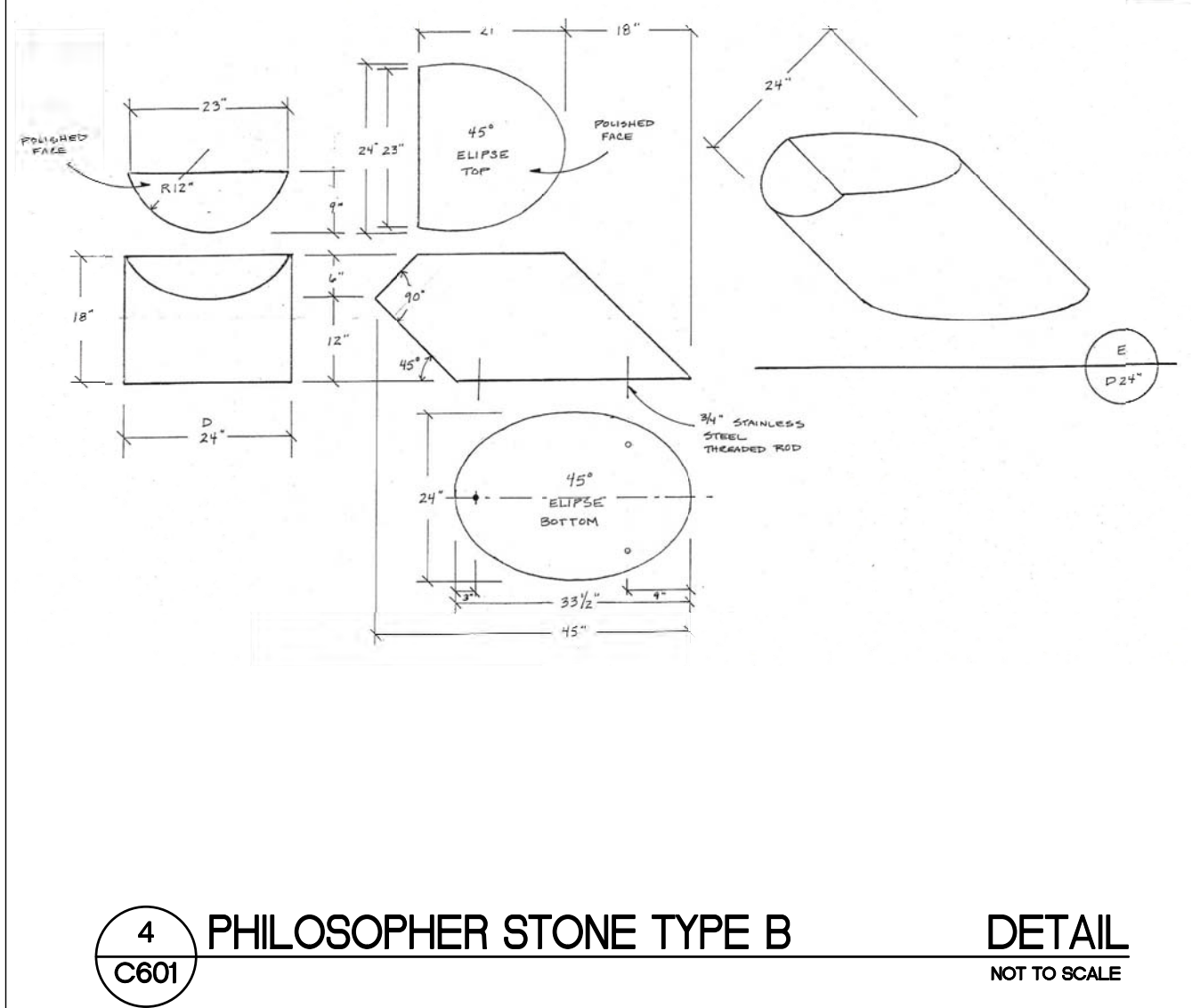
**1 FOUNTAIN NOZZLE BASE TYPE A** **DETAIL**  
NOT TO SCALE



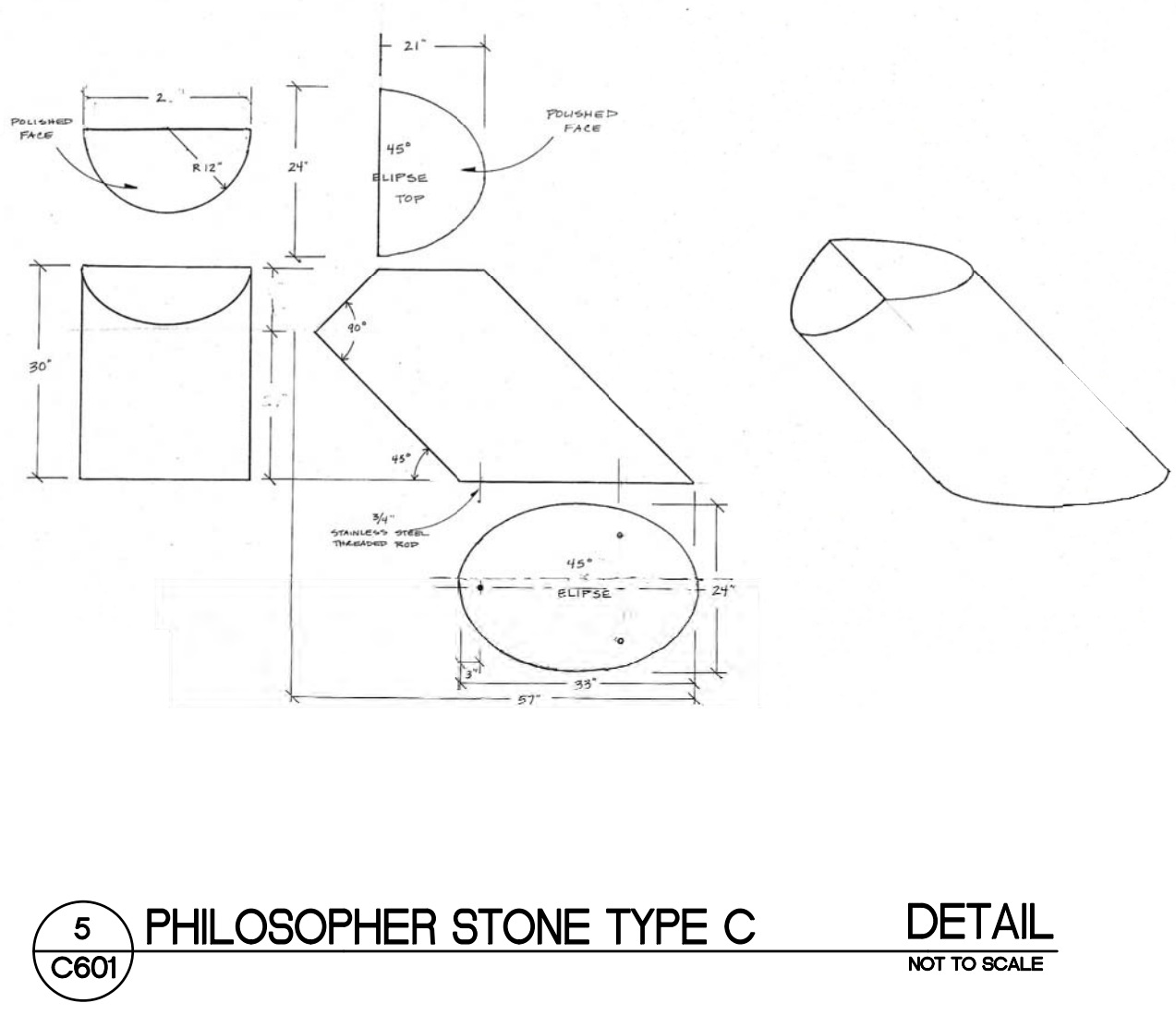
**2 PEACE POLE** **DETAIL**  
NOT TO SCALE



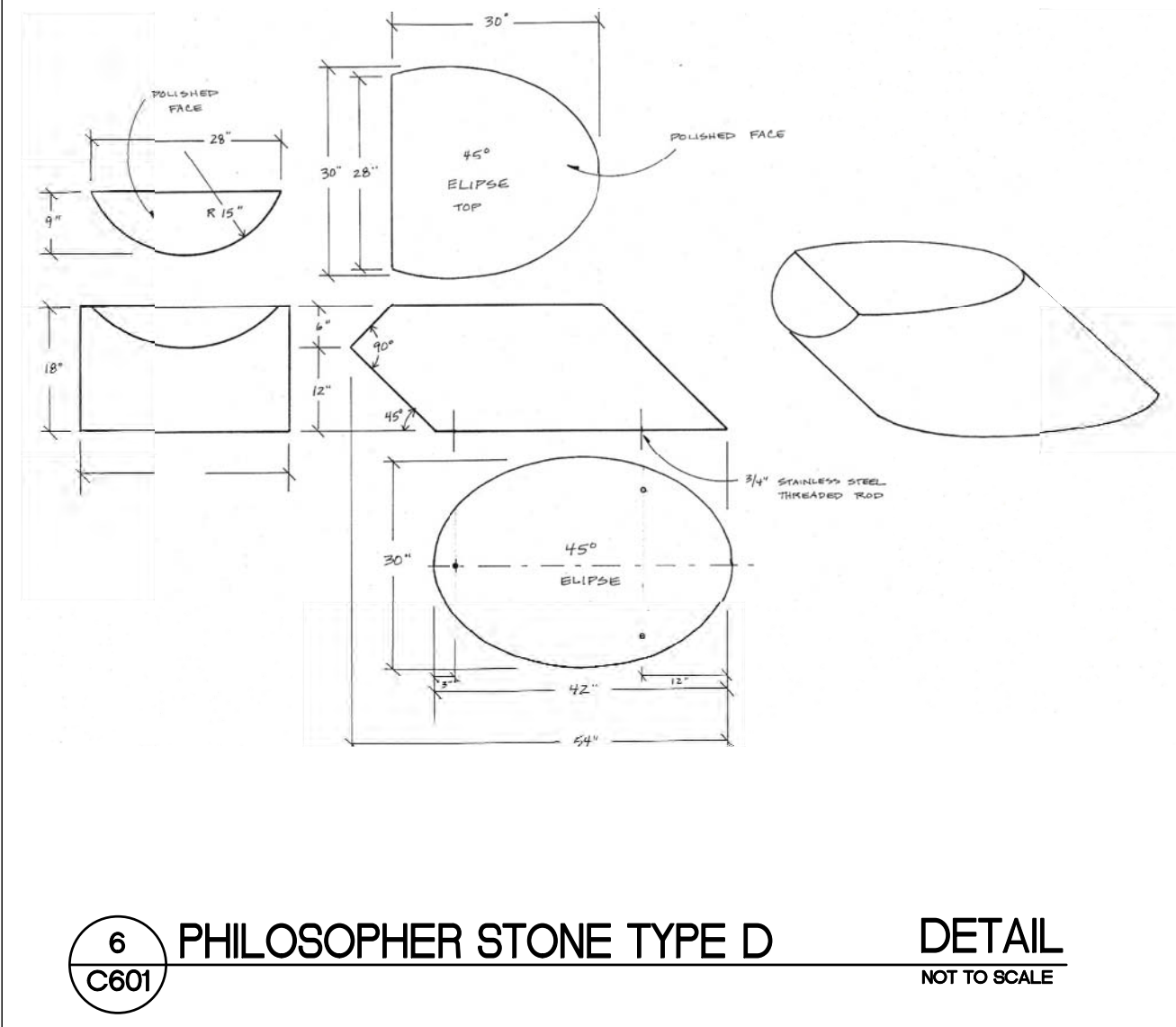
**3 PHILOSOPHER STONE TYPE A** **DETAIL**  
NOT TO SCALE



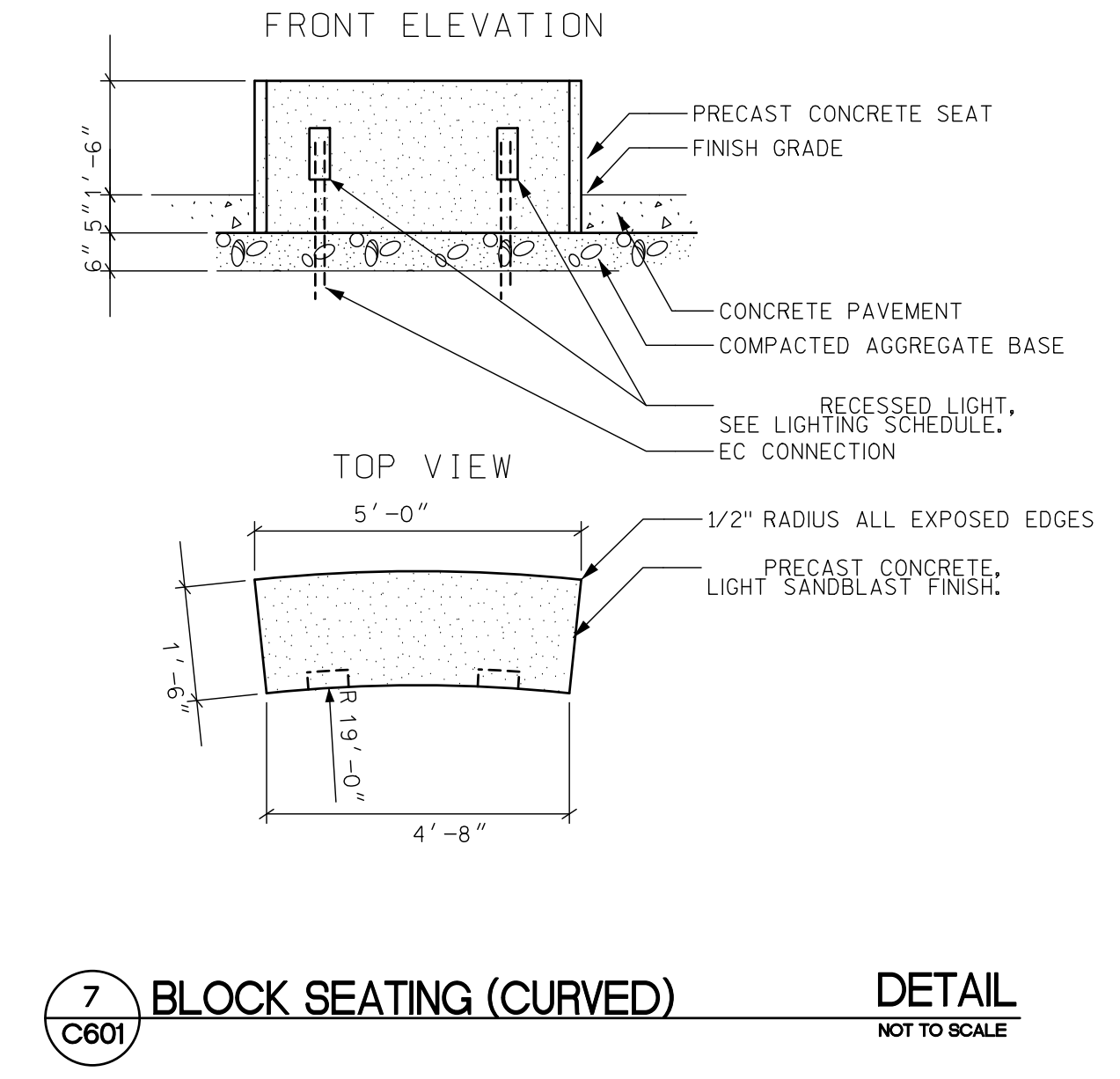
**4 PHILOSOPHER STONE TYPE B** **DETAIL**  
NOT TO SCALE



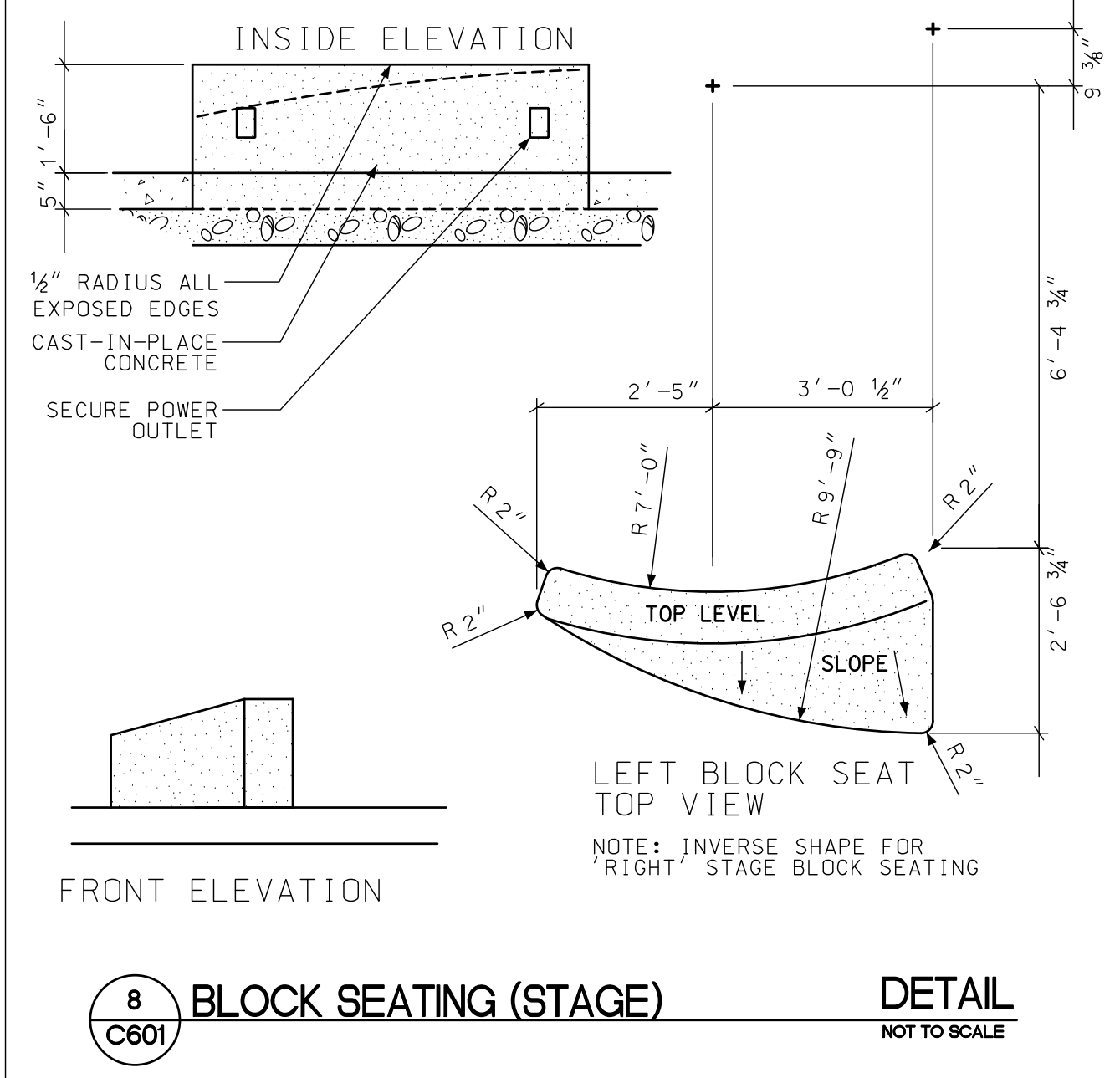
**5 PHILOSOPHER STONE TYPE C** **DETAIL**  
NOT TO SCALE



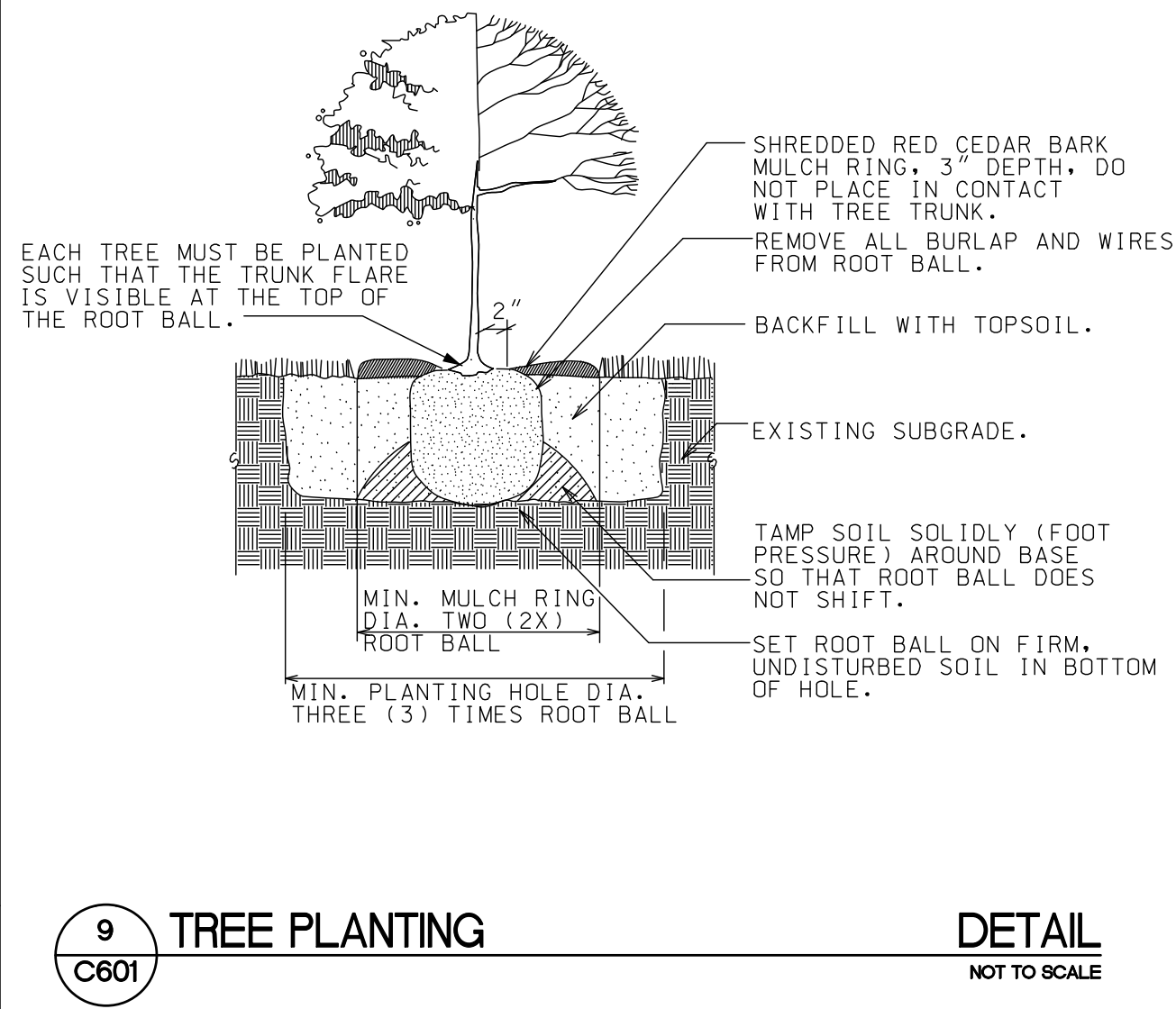
**6 PHILOSOPHER STONE TYPE D** **DETAIL**  
NOT TO SCALE



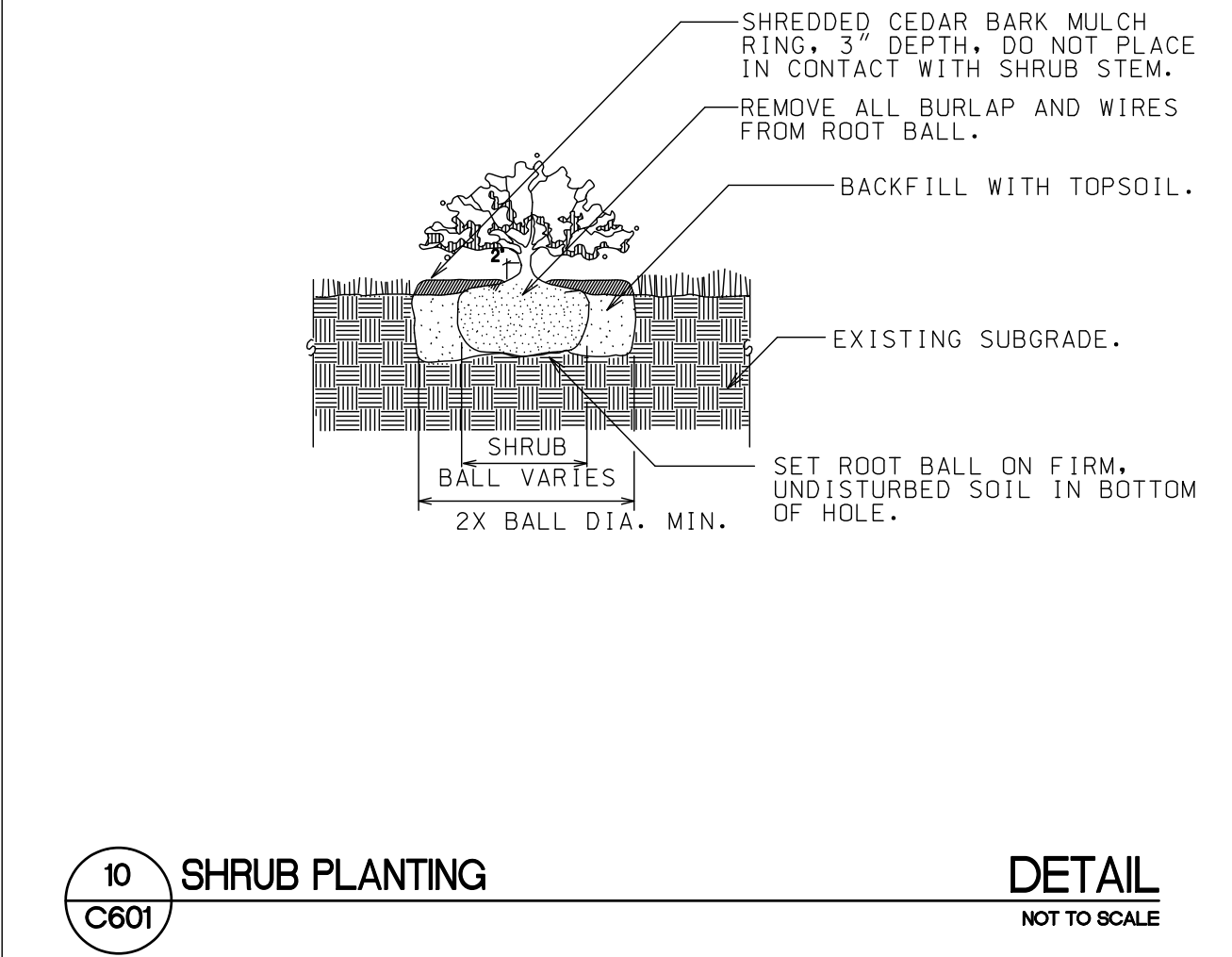
**7 BLOCK SEATING (CURVED)** **DETAIL**  
NOT TO SCALE



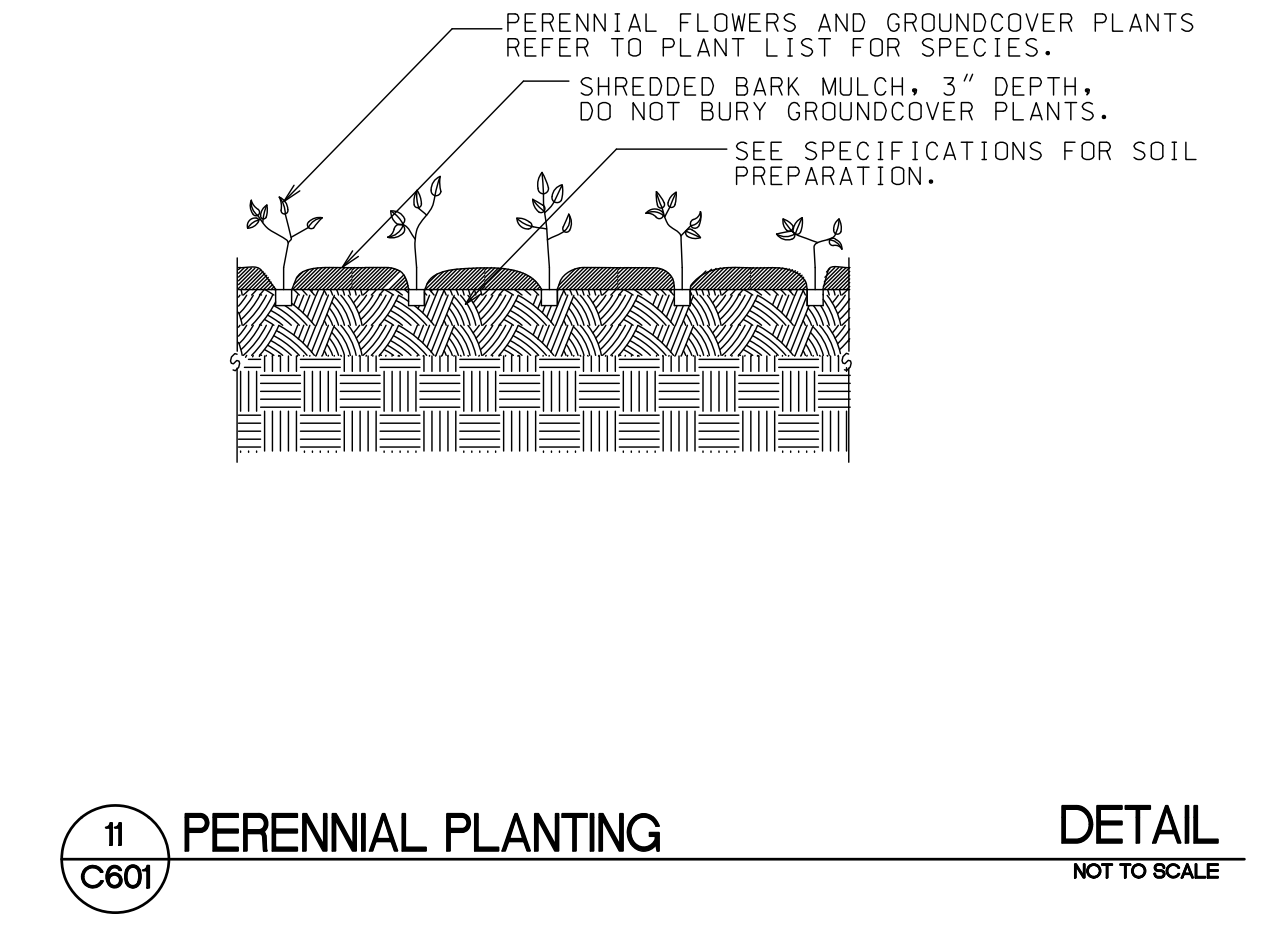
**8 BLOCK SEATING (STAGE)** **DETAIL**  
NOT TO SCALE



**9 TREE PLANTING** **DETAIL**  
NOT TO SCALE



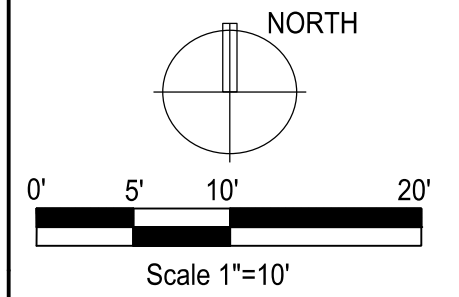
**10 SHRUB PLANTING** **DETAIL**  
NOT TO SCALE



**11 PERENNIAL PLANTING** **DETAIL**  
NOT TO SCALE

Consultants

**Elizabeth Link Peace Park Redevelopment**  
229 W. Gilman Street, Madison, WI



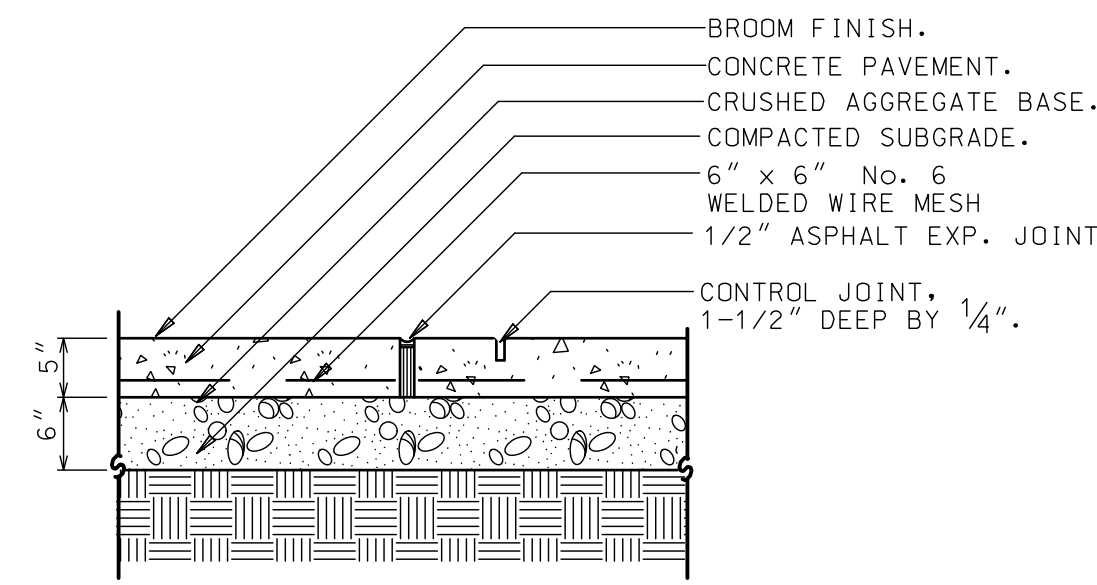
Issuance/Revision	Date

Project No.	6340
Drawn By	MS
Checked By	MS
Date	07-15-09
Sheet Title	

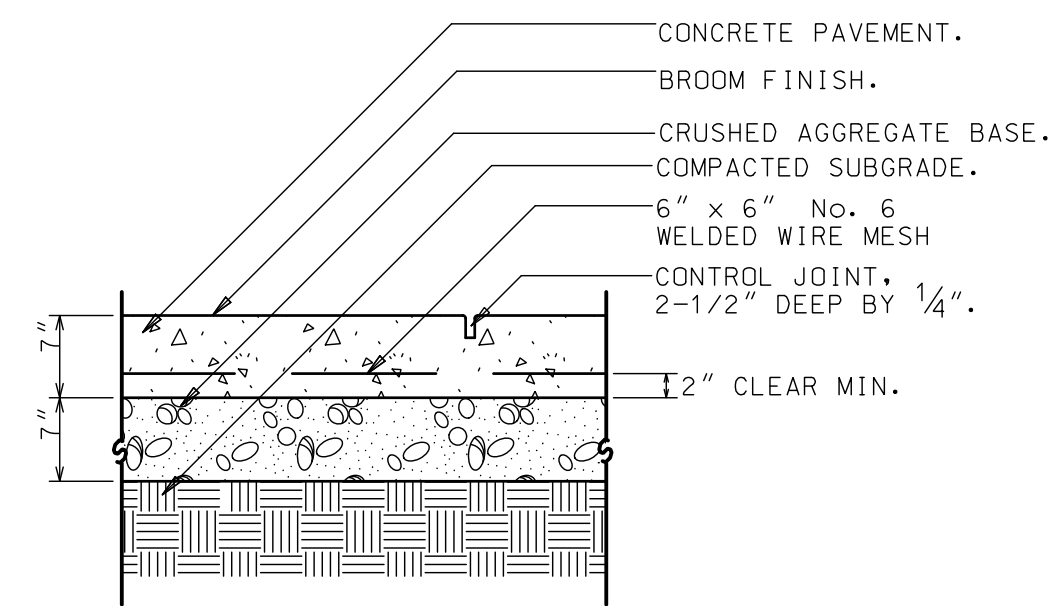
SITE DETAILS

Sheet No.  
**C601**

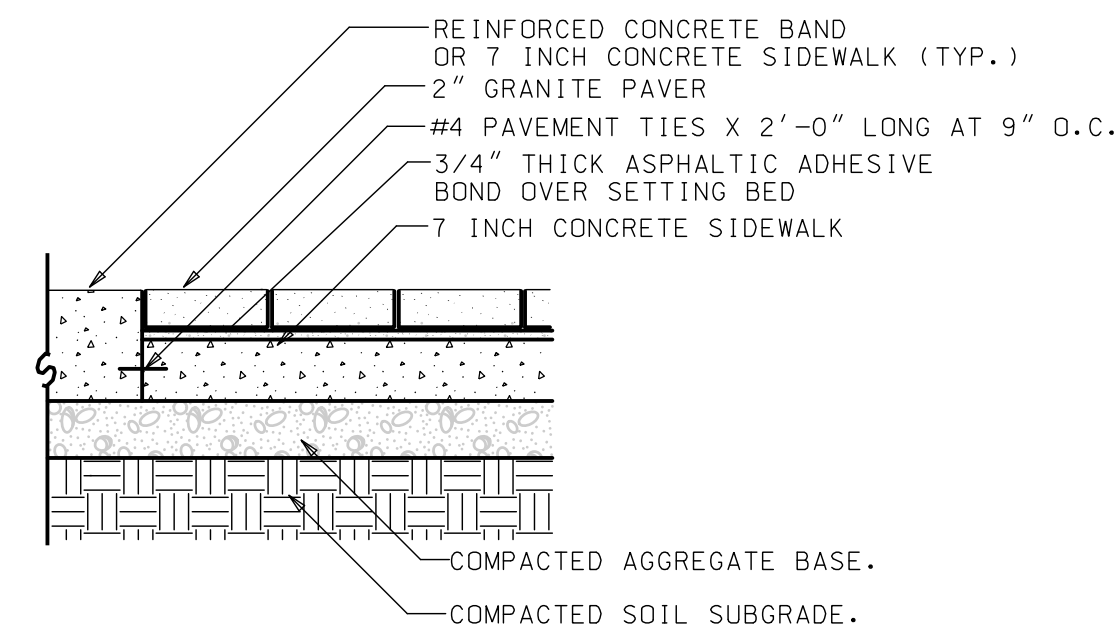




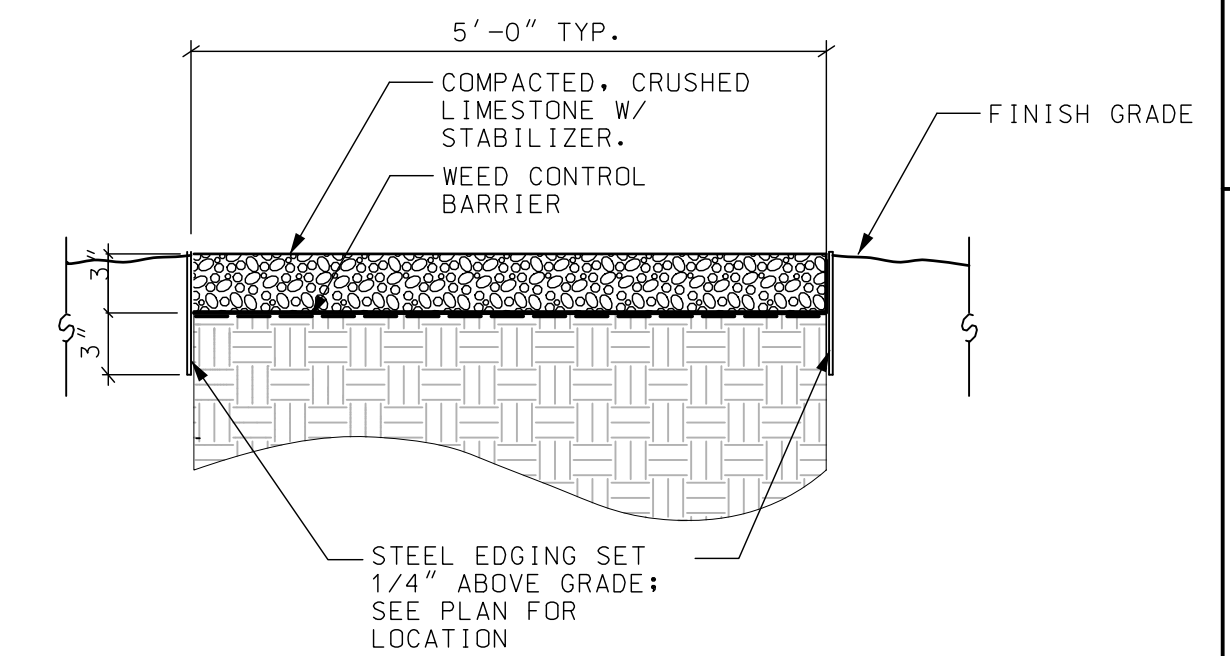
**1 CONCRETE PAVEMENT** DETAIL  
C600 NOT TO SCALE



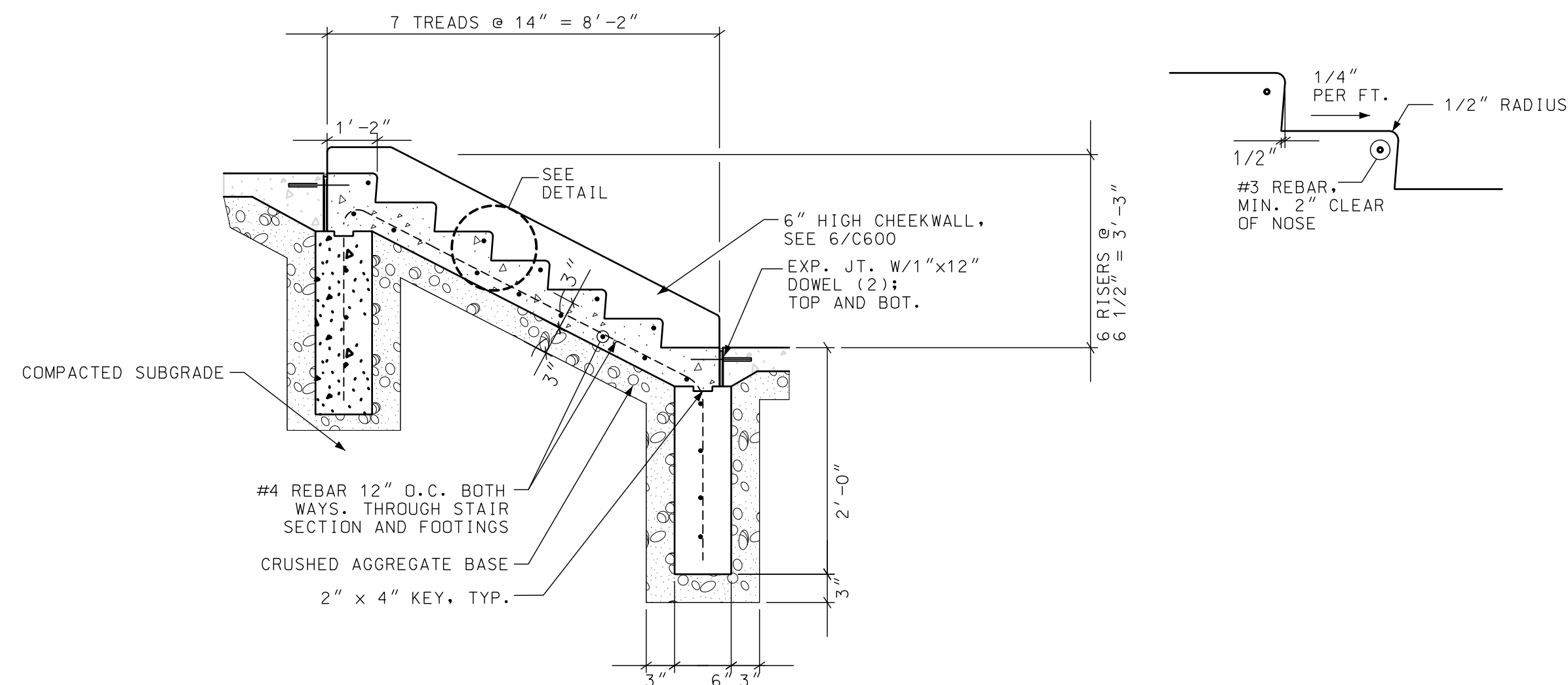
**2 HEAVY-DUTY CONCRETE PAVEMENT** DETAIL  
C600 NOT TO SCALE



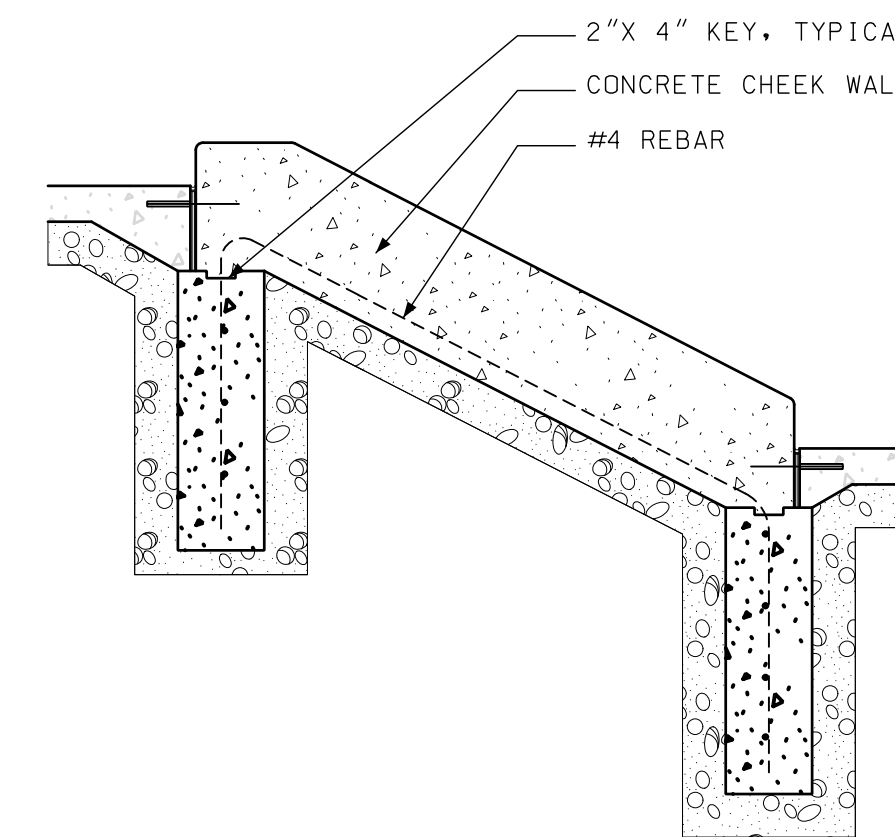
**3 GRANITE PAVERS ON CONCRETE** DETAIL  
C600 NOT TO SCALE



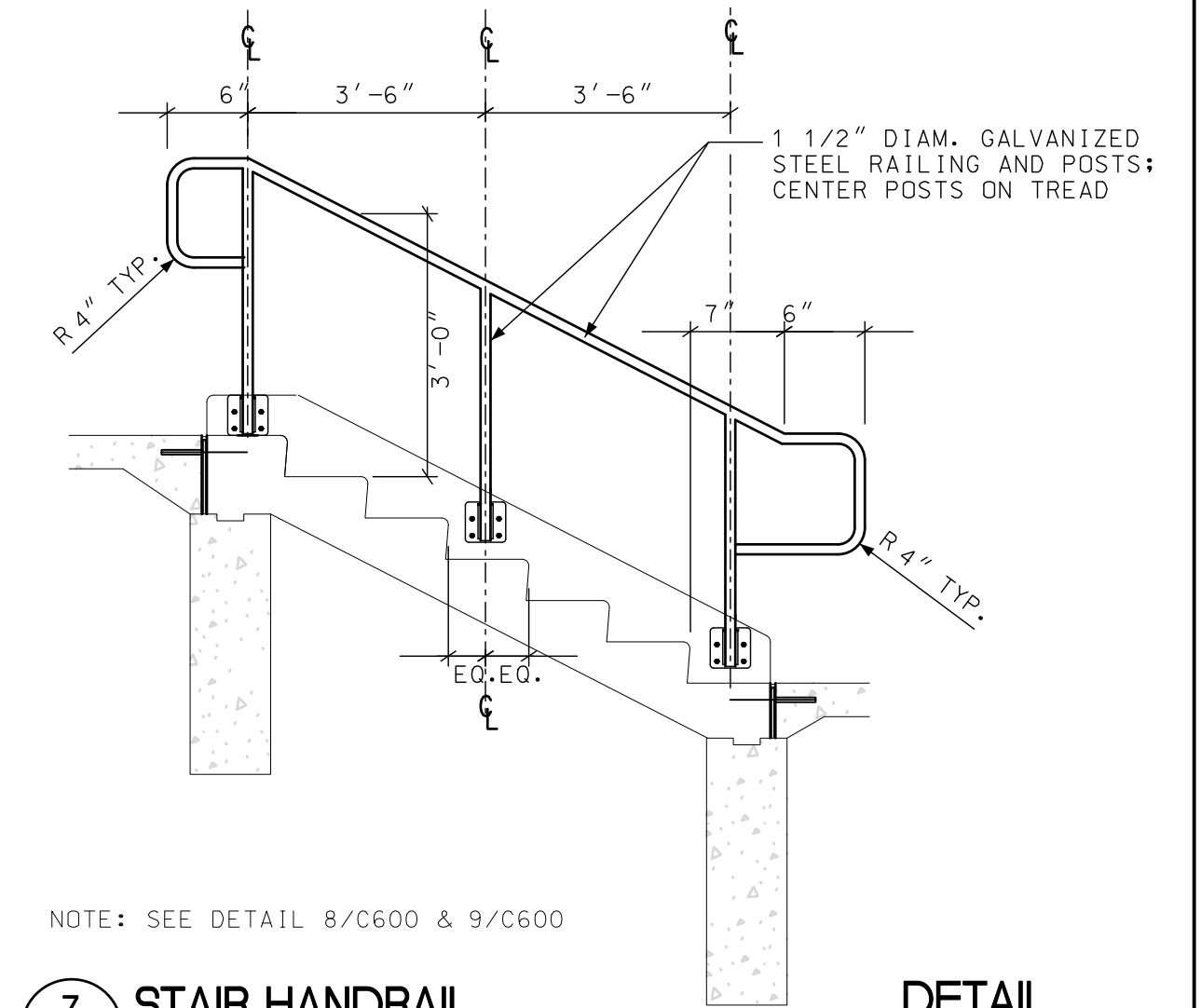
**4 CRUSHED LIMESTONE PATH** DETAIL  
C600 NOT TO SCALE



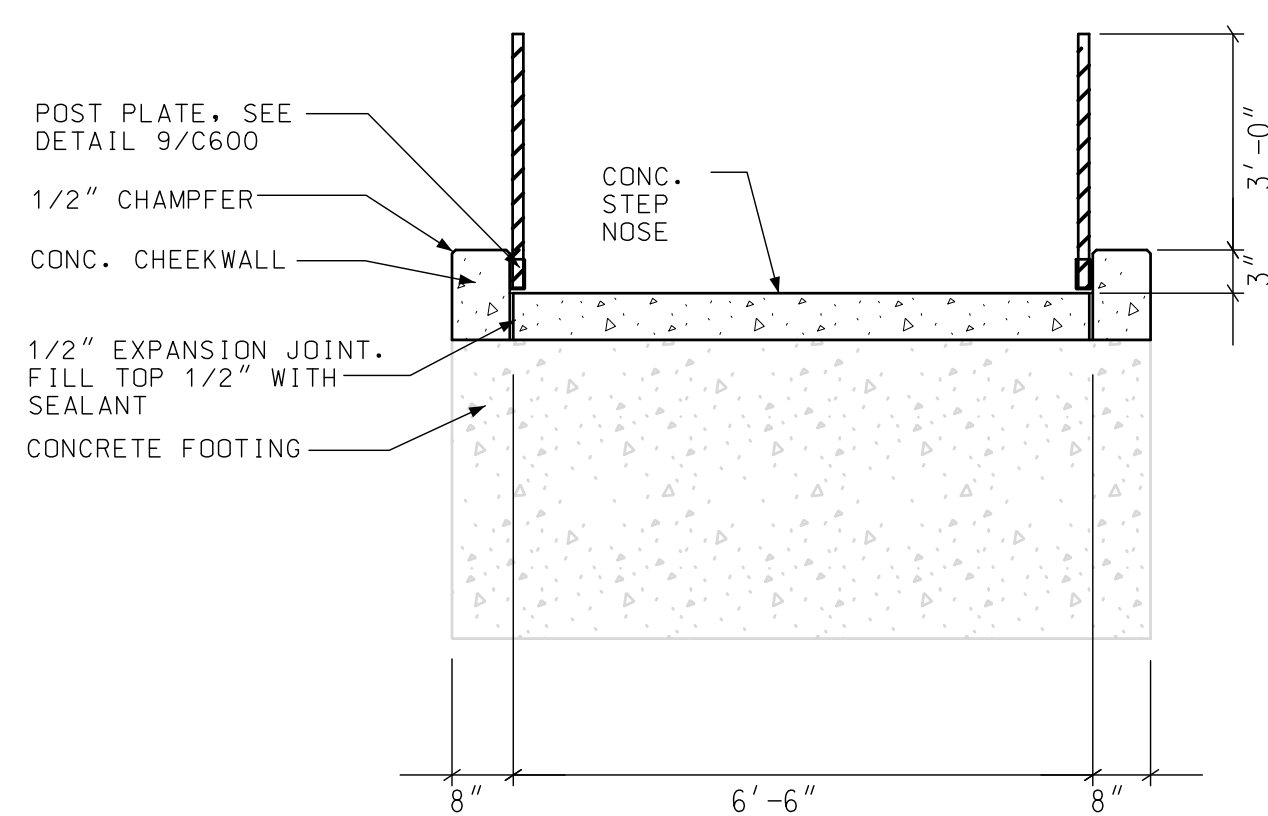
**5 CONCRETE STAIRS** DETAIL  
C600 NOT TO SCALE



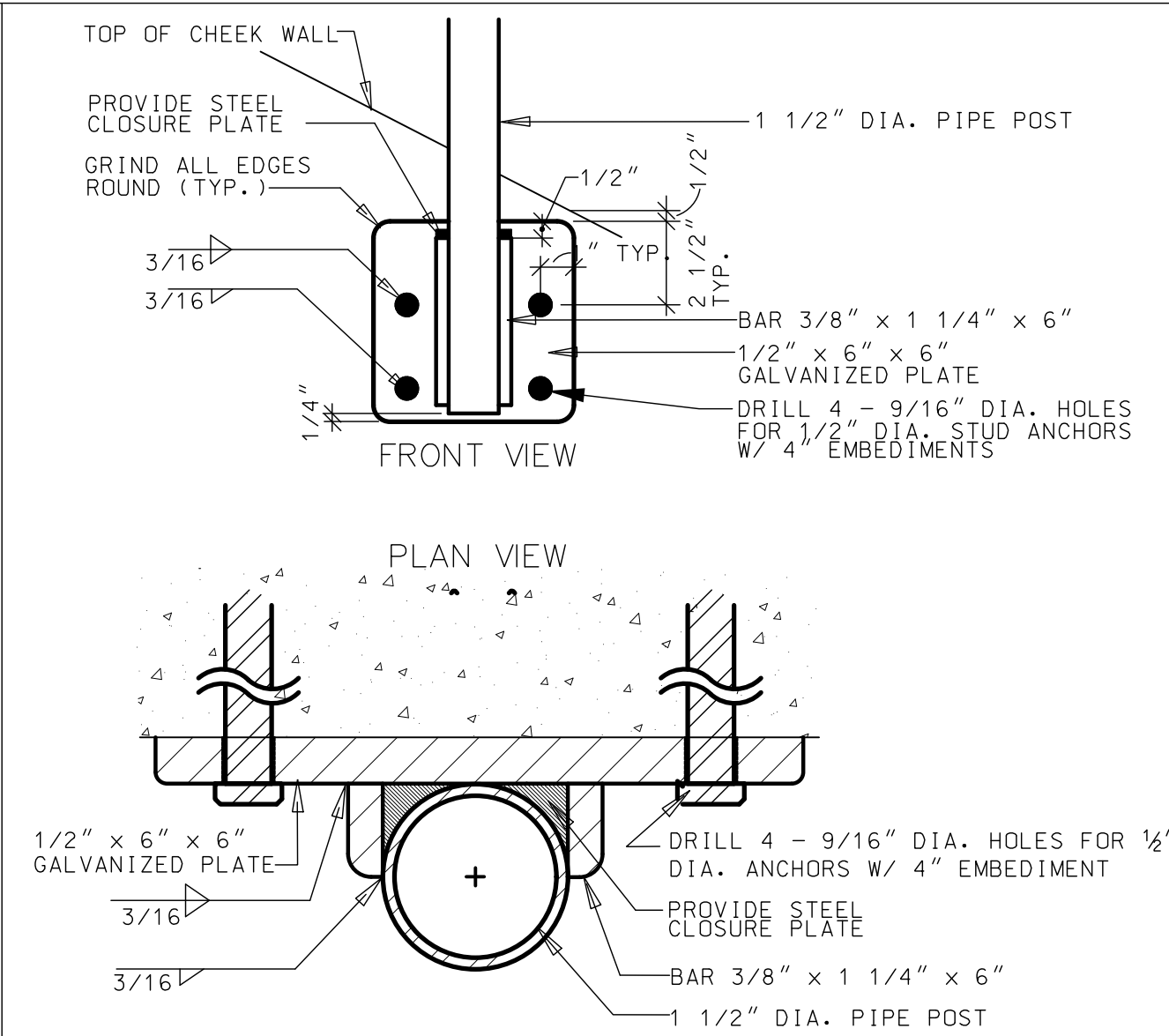
**6 CONCRETE STAIR CHEEK WALL** DETAIL  
C600 NOT TO SCALE



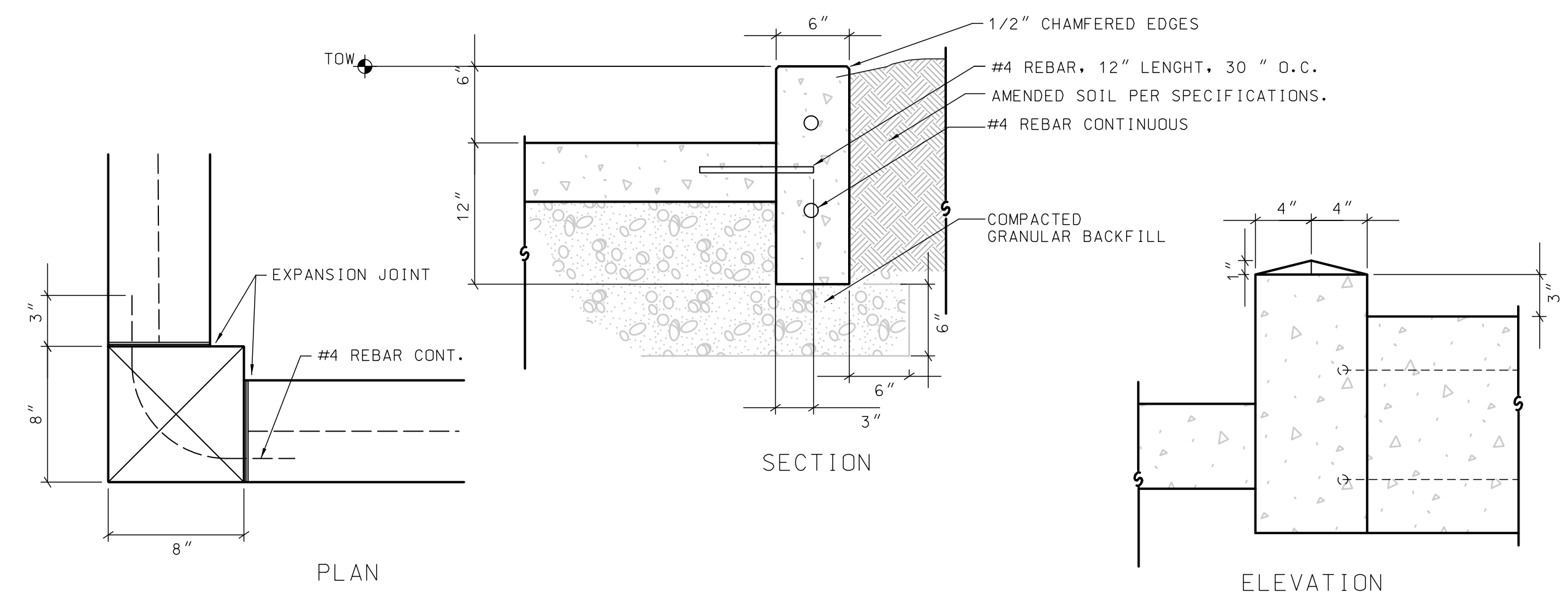
**7 STAIR HANDRAIL** DETAIL  
C600 NOT TO SCALE



**8 STAIR CROSS-SECTION** DETAIL  
C600 NOT TO SCALE



**9 HANDRAIL POST PLATE ASSEMBLY** DETAIL  
C600 NOT TO SCALE



**10 FREE STANDING CURB** DETAIL  
C600 NOT TO SCALE

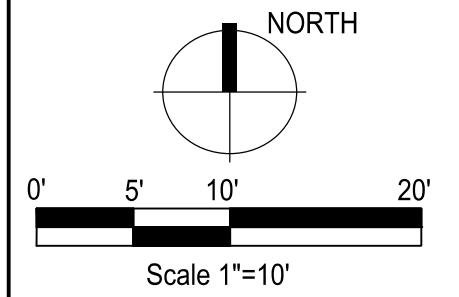
Issuance/Revision	Date

Project No.	6340
Drawn By	MS
Checked By	MS
Date	07-15-09
Sheet Title	



Consultants

**Elizabeth Link Peace Park Redevelopment**  
229 W. Gilman Street, Madison, WI

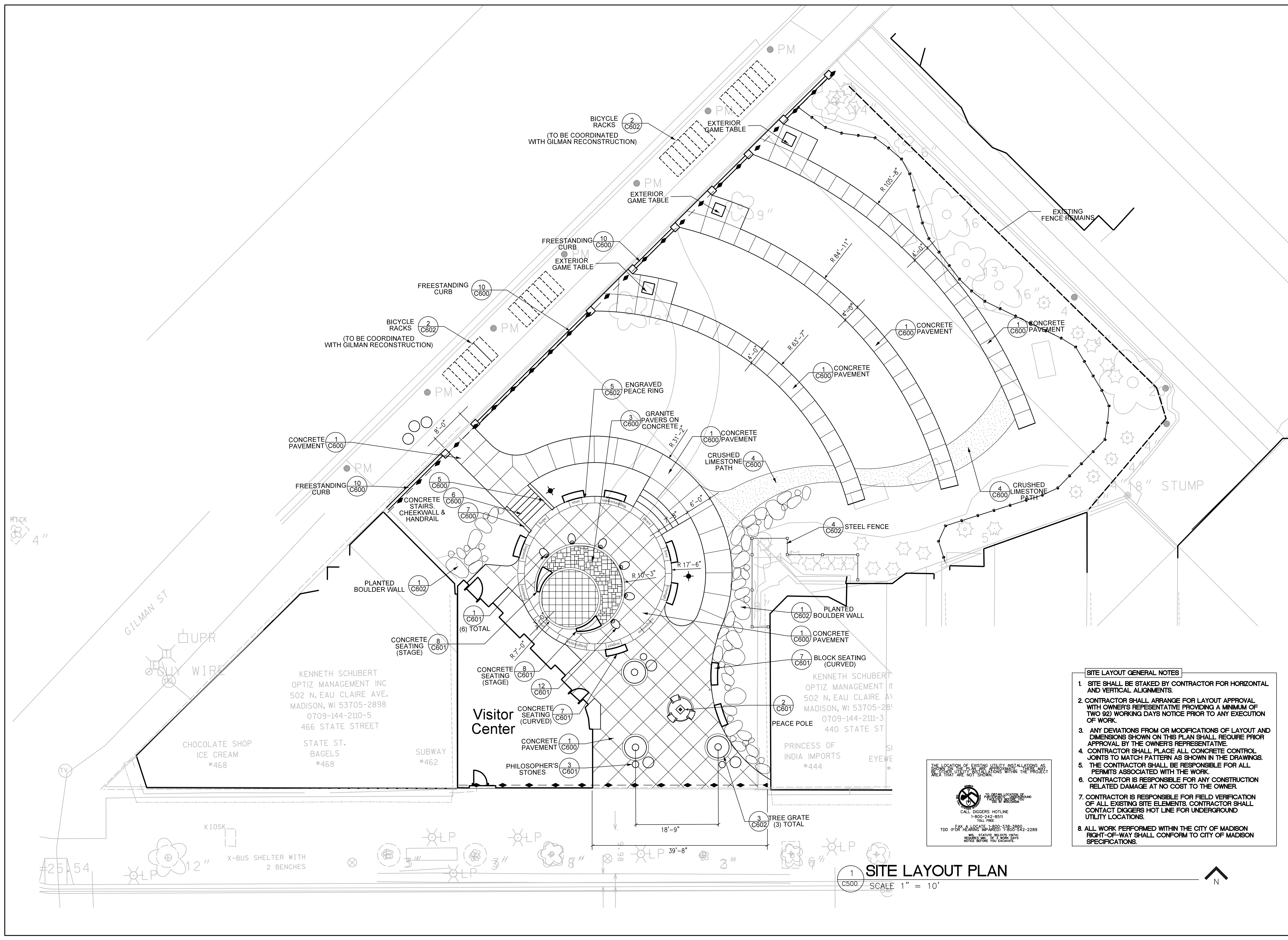


Issuance/Revision	Date

Project No.	6340
Drawn By	MS
Checked By	MS
Date	07-15-09
Sheet Title	

SITE LAYOUT PLAN

Sheet No.  
**C500**



- SITE LAYOUT GENERAL NOTES**
1. SITE SHALL BE STAKED BY CONTRACTOR FOR HORIZONTAL AND VERTICAL ALIGNMENTS.
  2. CONTRACTOR SHALL ARRANGE FOR LAYOUT APPROVAL WITH OWNER'S REPRESENTATIVE PROVIDING A MINIMUM OF TWO (2) WORKING DAYS NOTICE PRIOR TO ANY EXECUTION OF WORK.
  3. ANY DEVIATIONS FROM OR MODIFICATIONS OF LAYOUT AND DIMENSIONS SHOWN ON THIS PLAN SHALL REQUIRE PRIOR APPROVAL BY THE OWNER'S REPRESENTATIVE.
  4. CONTRACTOR SHALL PLACE ALL CONCRETE CONTROL JOINTS TO MATCH PATTERN AS SHOWN IN THE DRAWINGS.
  5. THE CONTRACTOR SHALL BE RESPONSIBLE FOR ALL PERMITS ASSOCIATED WITH THE WORK.
  6. CONTRACTOR IS RESPONSIBLE FOR ANY CONSTRUCTION RELATED DAMAGE AT NO COST TO THE OWNER.
  7. CONTRACTOR IS RESPONSIBLE FOR FIELD VERIFICATION OF ALL EXISTING SITE ELEMENTS. CONTRACTOR SHALL CONTACT DIGGERS HOT LINE FOR UNDERGROUND UTILITY LOCATIONS.
  8. ALL WORK PERFORMED WITHIN THE CITY OF MADISON RIGHT-OF-WAY SHALL CONFORM TO CITY OF MADISON SPECIFICATIONS.

THE LOCATION OF EXISTING UTILITY INSTALLATIONS AS SHOWN ON THE PLAN IS APPROXIMATE. THERE MAY BE OTHER UTILITIES WITHIN THE PROJECT AREA THAT ARE NOT SHOWN.

**CALL DIGGERS HOTLINE**  
1-800-242-8511  
TOLL FREE

FOR MORE INFORMATION CALL  
1-800-380-2854  
TOLL FREE

TO OBTAIN LOCATION OF UNDERGROUND UTILITIES  
CALL DIGGERS HOTLINE  
1-800-242-8511  
TOLL FREE

TO OBTAIN LOCATION OF UNDERGROUND UTILITIES  
CALL DIGGERS HOTLINE  
1-800-242-8511  
TOLL FREE

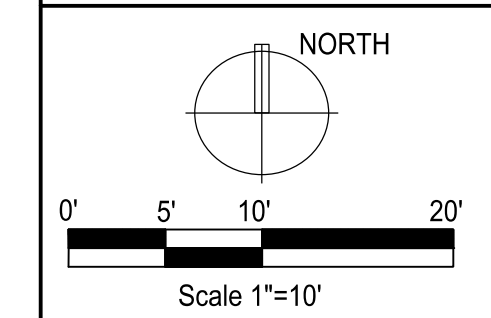
TO OBTAIN LOCATION OF UNDERGROUND UTILITIES  
CALL DIGGERS HOTLINE  
1-800-242-8511  
TOLL FREE

**SITE LAYOUT PLAN**  
SCALE 1" = 10'



Consultants

**Elizabeth Link Peace Park Redevelopment**  
229 W. Gilman Street, Madison, WI

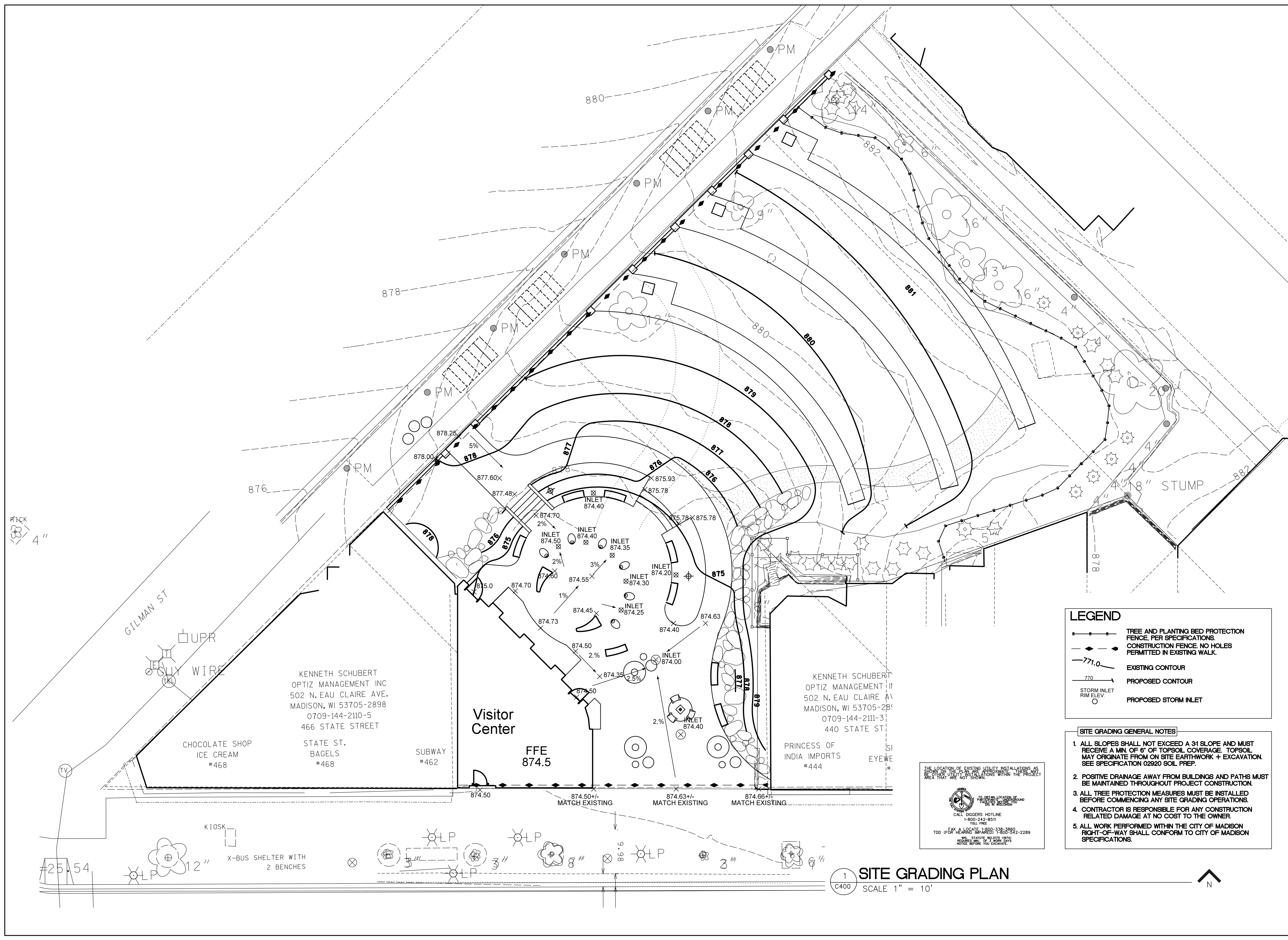


Issuance/Revision	Date

Project No.	6340
Drawn By	MS
Checked By	MS
Date	07-15-09
Sheet Title	

SITE GRADING PLAN

Sheet No.  
**C400**



**LEGEND**

- TREE AND PLANTING BED PROTECTION FENCE, PER SPECIFICATIONS.
- CONSTRUCTION FENCE, NO HOLES PERMITTED IN EXISTING WALK.
- 771.0 EXISTING CONTOUR
- 770 PROPOSED CONTOUR
- STORM INLET RIM ELEV. PROPOSED STORM INLET

- SITE GRADING GENERAL NOTES**
- ALL SLOPES SHALL NOT EXCEED A 3:1 SLOPE AND MUST RECEIVE A MIN. OF 6" OF TOPSOIL COVERAGE. TOPSOIL MAY ORIGINATE FROM ON SITE EARTH-WORK + EXCAVATION. SEE SPECIFICATION 02920 SOIL PREP.
  - POSITIVE DRAINAGE AWAY FROM BUILDINGS AND PATHS MUST BE MAINTAINED THROUGHOUT PROJECT CONSTRUCTION.
  - ALL TREE PROTECTION MEASURES MUST BE INSTALLED BEFORE COMMENCING ANY SITE GRADING OPERATIONS.
  - CONTRACTOR IS RESPONSIBLE FOR ANY CONSTRUCTION RELATED DAMAGE AT NO COST TO THE OWNER.
  - ALL WORK PERFORMED WITHIN THE CITY OF MADISON RIGHT-OF-WAY SHALL CONFORM TO CITY OF MADISON SPECIFICATIONS.

THE LOCATION OF EXISTING UTILITY INSTALLATIONS AS SHOWN ON THIS PLAN ARE FOR INFORMATION ONLY. THERE ARE OTHER UTILITY INSTALLATIONS WITHIN THE PROJECT AREA THAT ARE NOT SHOWN.

CALL DIGGERS HOTLINE  
1-800-242-8511  
TOLL FREE

FAX & LOCATE 1-800-338-3950  
TOD (FOR HEARING IMPAIRED) 1-800-542-2289  
WI. STATUTE #S 075, 0274  
NOTICE: CALL 1-800-242-8511 BEFORE YOU EXCAVATE.

**1 SITE GRADING PLAN**  
SCALE 1" = 10'

RTICK  
4"

GILMAN ST

UPR  
WIRE

KENNETH SCHUBERT  
OPTIZ MANAGEMENT INC  
502 N. EAU CLAIRE AVE.  
MADISON, WI 53705-2898  
0709-144-2110-5  
466 STATE STREET

STATE ST.  
BAGELS  
#468

SUBWAY  
#462

Visitor Center

FFE  
874.5

KENNETH SCHUBERT  
OPTIZ MANAGEMENT II  
502 N. EAU CLAIRE A  
MADISON, WI 53705-2898  
0709-144-2111-3  
440 STATE ST

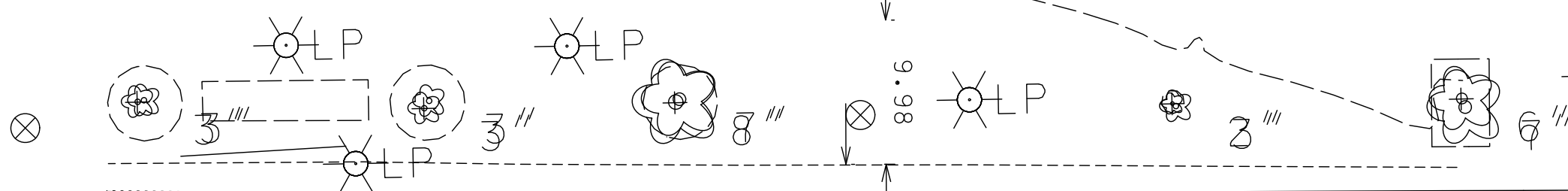
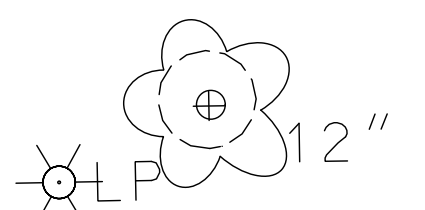
PRINCESS OF  
INDIA IMPORTS  
#444

CHOCOLATE SHOP  
ICE CREAM  
#468

KIOSK

X-BUS SHELTER WITH  
2 BENCHES

#25.54







**LOGO:**  
Lisa Link Peace Park graphic identity

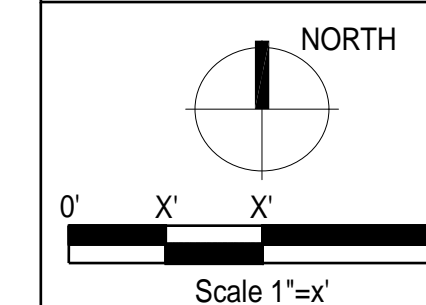


**Exterior Banner Graphics:**  
4 quantity graphic banners facing the park  
Digital printed graphics to 10' tall x 4' wide aluminum panel (Dibond or vender recommended aluminum panel to withstand elements)  
Panels mount to building facade (masonry wall) and extend higher than the facade

Consultants



**Elizabeth Link Peace Park Redevelopment**  
229 W. Gilman Street, Madison, WI



Issuance/Revision	Date
GCS	08-04-09
GCS	08-25-09
GCS	09-08-09

Project No.	6340
Drawn By	XX
Checked By	XX
Date	07-15-09

Sheet Title

LOGO &  
BANNER CONCEPTS

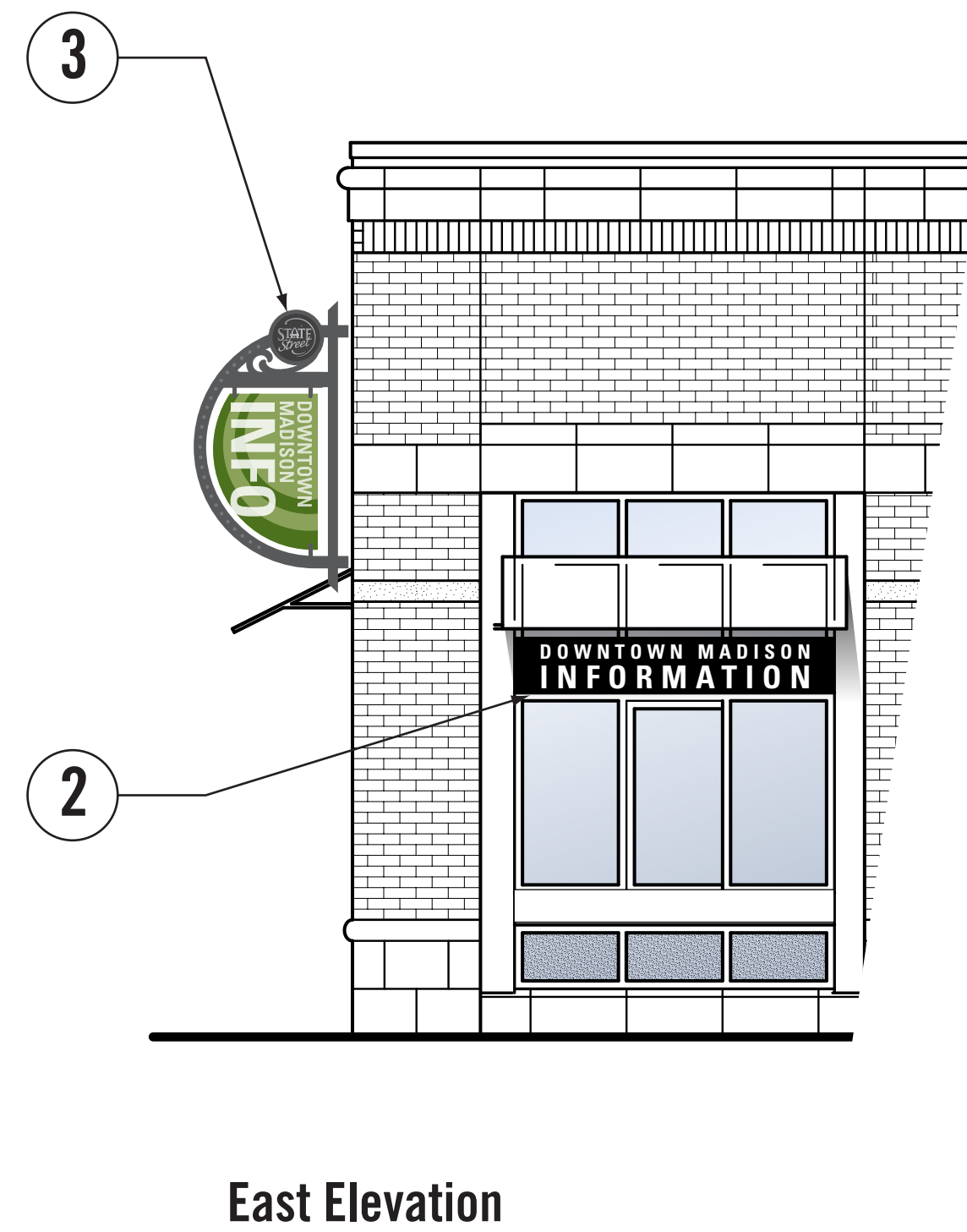
Sheet No.

**S100**

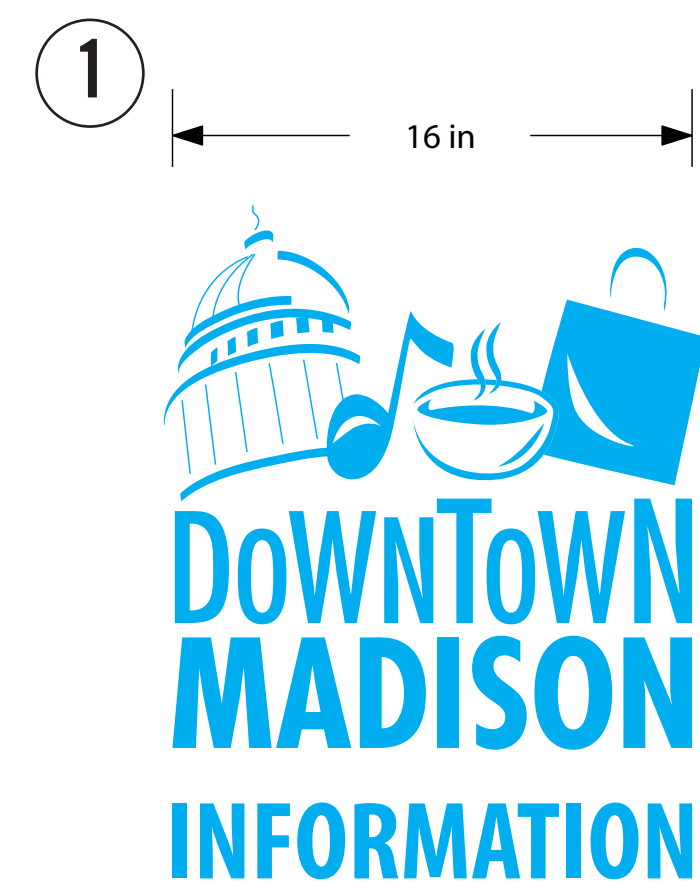




South Elevation



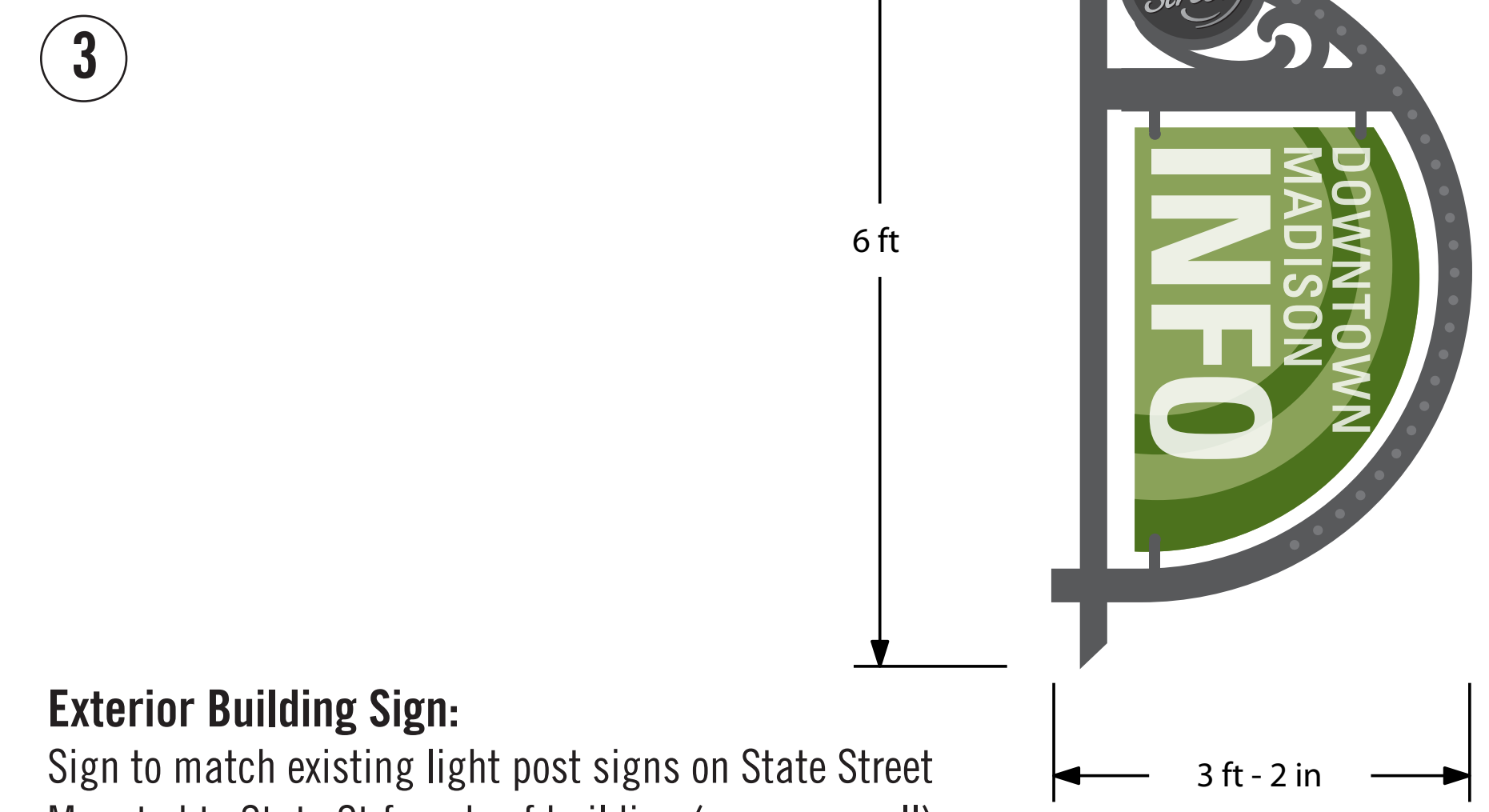
East Elevation



**Window Vinyl Graphics:**  
 Located on glass windows facing State Street  
 3M 7725-10 White translucent vinyl graphics- applied to glass  
 Logo dimensions are: 16"wide x 16" high



**Information Lettering:**  
 Curved metal panel on building facade over service windows.  
 Exterior light fixture located behind panel.  
 Black panel finish (To match State Street Fixtures)  
 White acrylic push through letters set into metal panel.  
 Panel dimension (approximate): 6'-6" wide x 1'-3"high  
 Letters approximately 7" high and 4" high  
 Font Type: Univers Bold Condensed (To match State Street Banners)



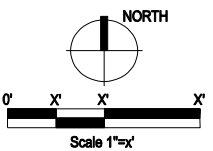
**Exterior Building Sign:**  
 Sign to match existing light post signs on State Street  
 Mounted to State St facade of building (masonry wall)  
 Overall Dimensions (approximate): 38" wide x 72" high  
 Framing/Bracket: Please refer to existing pedestrian banner bracket detail provided  
 Graphic Panel: Digital print graphics to 3mm Dibond/holes drilled for mounting to frame





Consultants

**Elizabeth Link Peace Park Redevelopment**  
229 W. Gilman Street, Madison, WI



Issuance/Revision	Date

Project No.	6340
Drawn By	ABL
Checked By	ECA
Date	9-09-09

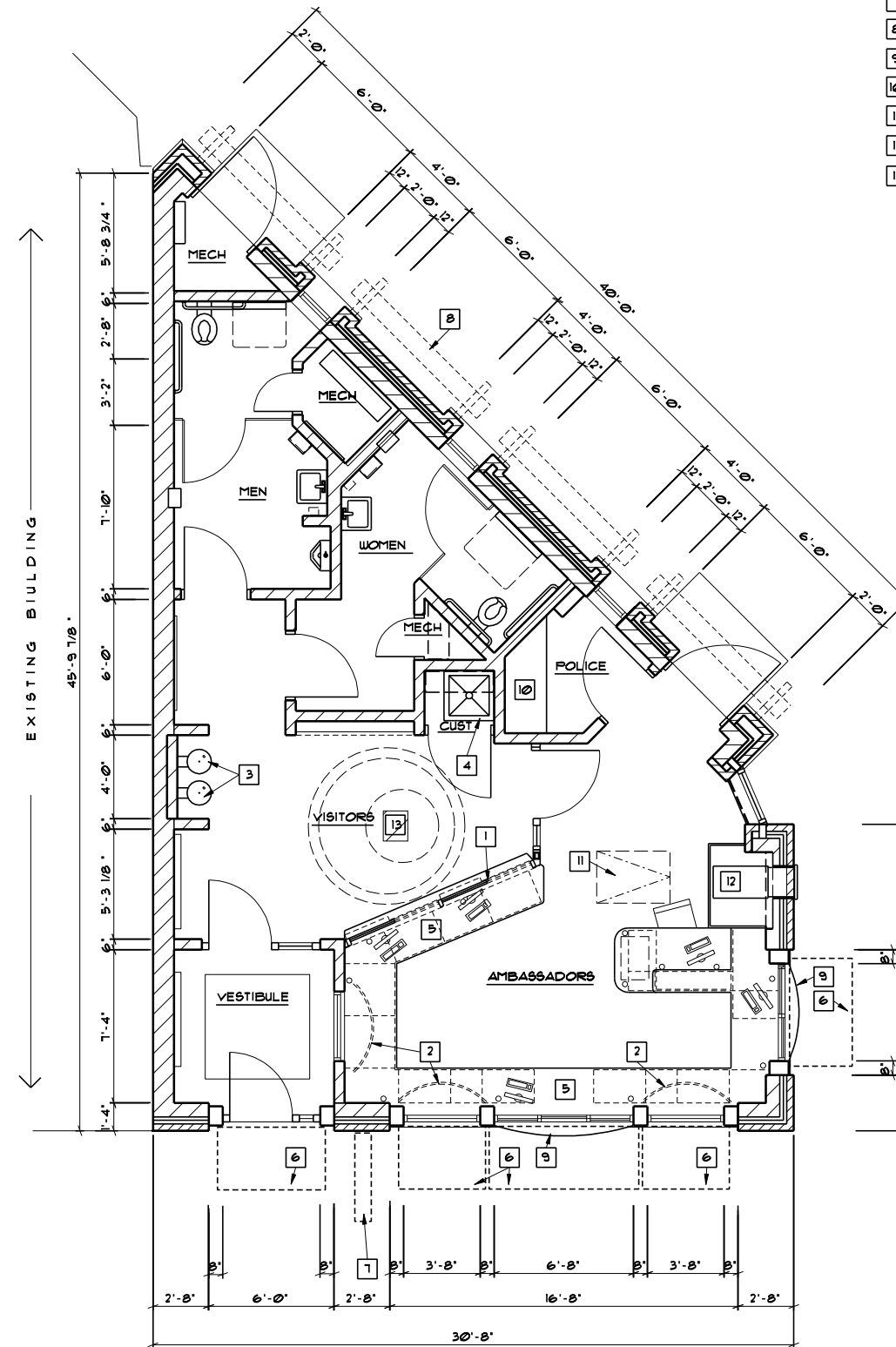
Sheet Title  
**FLOOR PLAN**

Sheet No.

**A100**

**BOX NOTES**

- 1 GLASS SERVICE WINDOW TO 1'-0" AFF. WITH GLASS TRANSOM ABOVE
- 2 DISPLAY AREA BY OWNER
- 3 HI-LOW DRINKING FOUNTAIN - SEE PLUMBING
- 4 MOP BASIN - SEE PLUMBING
- 5 SERVICE COUNTER AT 36" AFF
- 6 AWNINGS ABOVE
- 7 SIGNAGE ABOVE
- 8 TRELLIS ABOVE
- 9 WALK-UP SERVICE WINDOW
- 10 POLICE WORK COUNTER AT 36" AFF (TBD)
- 11 ROOF ACCESS HATCH ABOVE
- 12 ATM MACHINE WITH CABINETRY SURROUND
- 13 41" SKYLIGHT ABOVE WITH COFFERED SOFFIT AREA



**FLOOR PLAN**  
1/4" = 1'-0" (22x34)  
1/8" = 1'-0" (11x17)

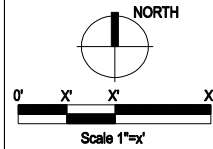




Consultants  
**MSA**  
 PROFESSIONAL SERVICES  
 TRANSPORTATION • MUNICIPAL DEVELOPMENT • ENVIRONMENTAL  
 1230 South Boulevard, Baraboo, WI 53913  
 608-356-2771 1-800-362-4505  
 Web Address: www.msa-ps.com  
 © MSA PROFESSIONAL SERVICES

MSA# 4474001

**Elizabeth Link Peace Park Redevelopment**  
 229 W. Gilman Street, Madison, WI

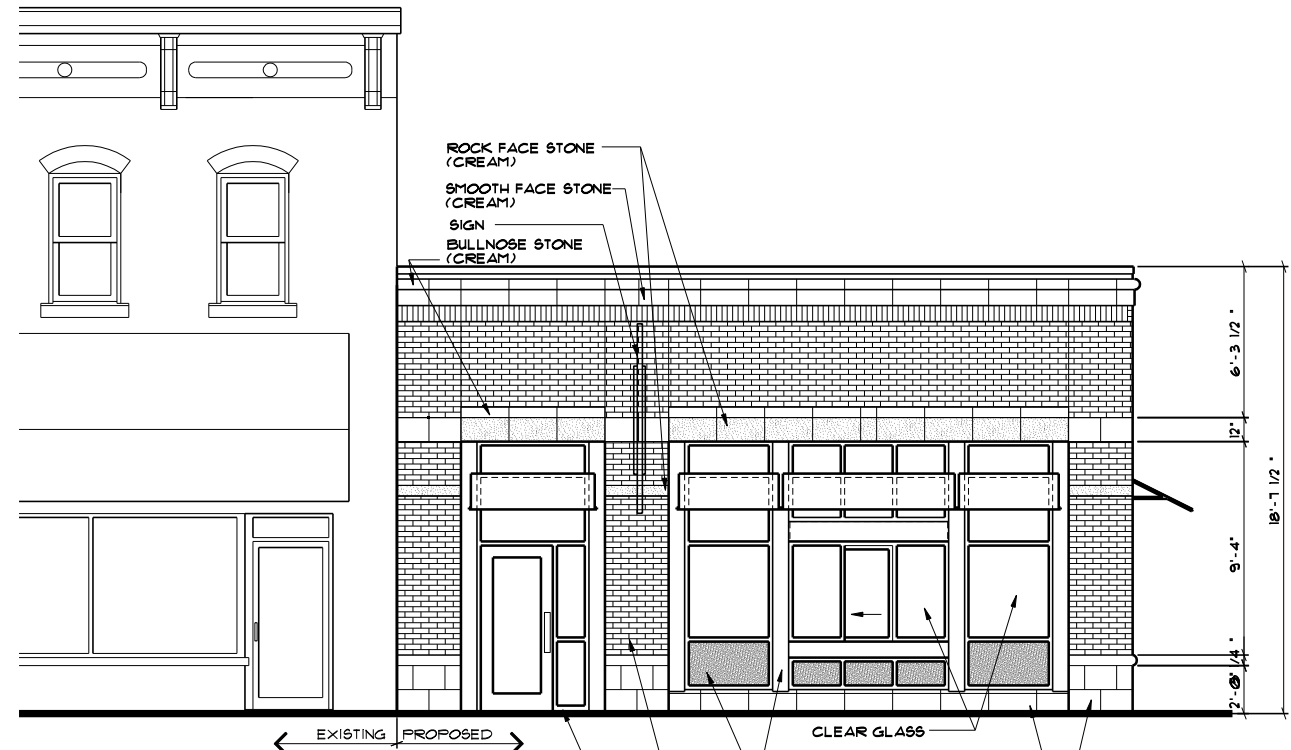


Issuance/Revision	Date

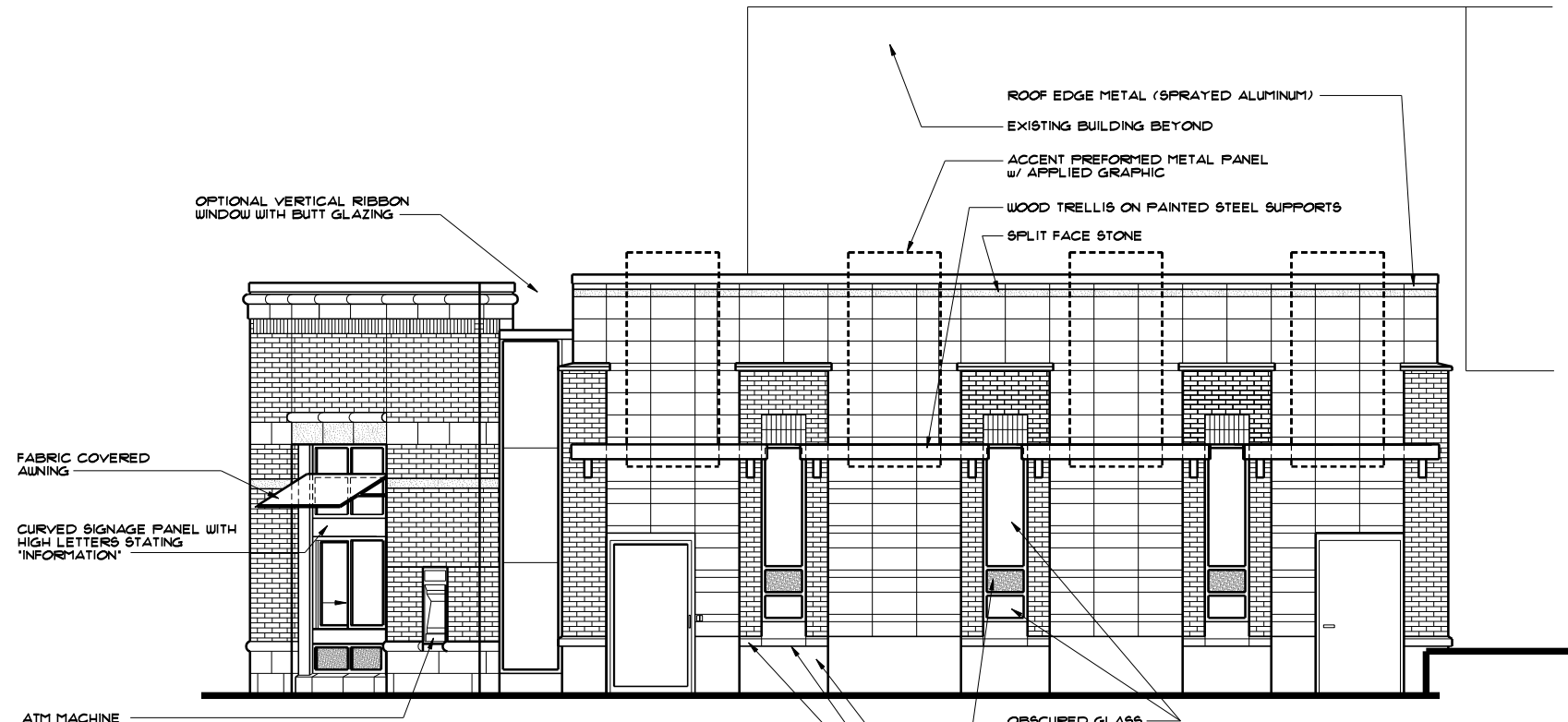
Project No. 6340  
 Drawn By ABL  
 Checked By ECA  
 Date 9-09-09  
 Sheet Title

**ELEVATIONS**

Sheet No.  
**A200**



**SOUTH ELEVATION**  
 1/4" = 1'-0" (22x34)  
 1/8" = 1'-0" (11x17)



**NORTH EAST ELEVATION**  
 1/4" = 1'-0" (22x34)  
 1/8" = 1'-0" (11x17)





**PERSPECTIVE 1**  
NTS



**PERSPECTIVE 2**  
NTS



**PERSPECTIVE 3**  
NTS



**PERSPECTIVE 4**  
NTS



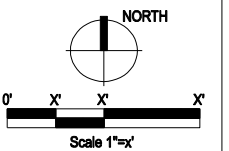
Consultants



TRANSPORTATION • MUNICIPAL  
DEVELOPMENT • ENVIRONMENTAL  
1230 South Boulevard, Baraboo, WI 53913  
608-356-2771 1-800-362-4505  
Web Address: www.msa-ps.com  
© MSA PROFESSIONAL SERVICES

MSA# 4474001

**Elizabeth Link Peace Park Redevelopment**  
229 W. Gilman Street, Madison, WI



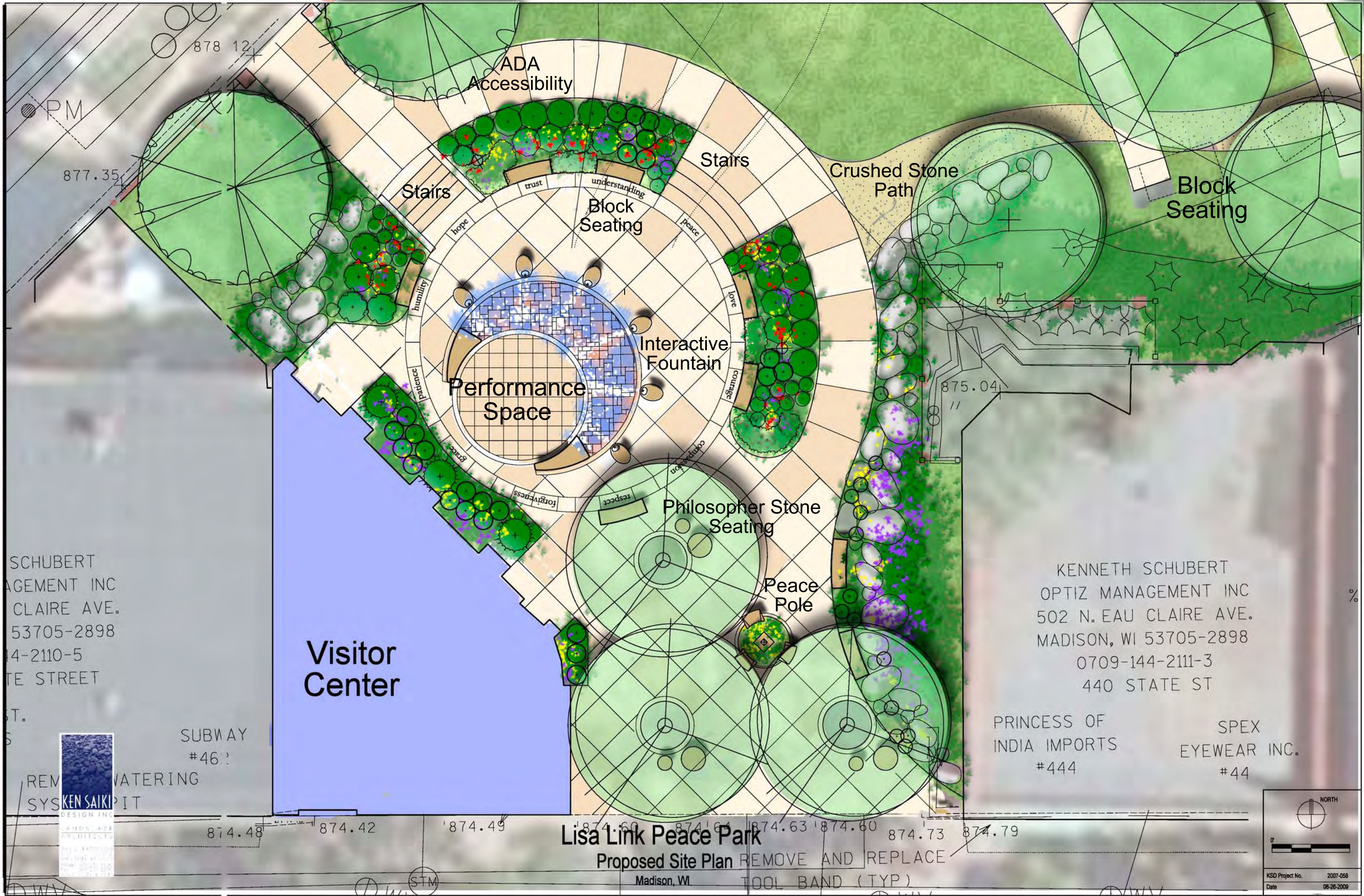
Issuance/Revision	Date

Project No.	6340
Drawn By	ABL
Checked By	ECA
Date	9-09-09
Sheet Title	

**PERSPECTIVES**

Sheet No.  
**A300**





SCHUBERT  
 OPTIZ MANAGEMENT INC  
 502 N. EAU CLAIRE AVE.  
 MADISON, WI 53705-2898  
 608-244-2110-5  
 STATE STREET

KENNETH SCHUBERT  
 OPTIZ MANAGEMENT INC  
 502 N. EAU CLAIRE AVE.  
 MADISON, WI 53705-2898  
 608-244-2111-3  
 440 STATE ST

PRINCESS OF  
 INDIA IMPORTS  
 #444

SPEX  
 EYEWEAR INC.  
 #44

Visitor  
 Center

SUBWAY  
 #46

**Lisa Link Peace Park**

Proposed Site Plan

Madison, WI

REMOVE AND REPLACE  
 TOOL BAND (TYP)

NORTH

KSD Project No. 2007-058  
 Date 08-28-2009



874.48 874.42 874.49 874.60 874.63 874.60 874.73 874.79





KENNETH SCHUBERT  
OPTIZ MANAGEMENT INC  
502 N. EAU CLAIRE AVE.  
MADISON, WI 53705-2898  
0709-144-2110-5  
466 STATE STREET

CHOCOLATE SHOP  
ICE CREAM  
#468

STATE ST.  
BAGELS  
#468

SUBWAY  
#462

Visitor Center

KENNETH SCHUBERT  
OPTIZ MANAGEMENT INC  
502 N. EAU CLAIRE AVE.  
MADISON, WI 53705-2898  
0709-144-2111-3  
440 STATE ST

PRINCESS OF  
INDIA IMPORTS  
#444

SPEX  
EYEWEAR INC.  
#440

432 STATE LLC  
K MADISON PROPERTY MNGMNT  
10 N CHARTER ST  
0709-144-2112-1  
434 STATE ST

B-SIDE  
RECORDS  
#436

SUNSHINE  
DAYDREAM  
#434

ROGER T. KAHN  
P.O. BOX 532  
MARINETTE, WI 54143-0532  
0709-144-2113-9  
428 STATE ST

THE HAPPY MEDIUM  
#428

LEWIS & MARGARET TOPPLE TRUST  
5418 OLD MIDDLETON RD #202  
MADISON, WI 53705  
0709-144-2114-7  
422 STATE ST

CHINS  
#422

OSBORN TRUST,  
EUGENE C ETAL  
241 LANGDON ST. #101  
MADISON, WI 53703-1275  
0709-144-2115-5  
418 STATE ST  
FAIR TRADE  
COFFEE  
#418



# Lisa Link Peace Park Proposed Site Plan Madison, WI

State Street

NORTH

Scale 1"=10' at 24x36"

KSD Project No. 2007-058  
Date 08-26-2009



