



6321 Town Center Drive
Metro Tech Lot 10

Metro Tech
Apartments
Aerial Site Map
February 26, 2021





Development Site



Development Site

Context Photos

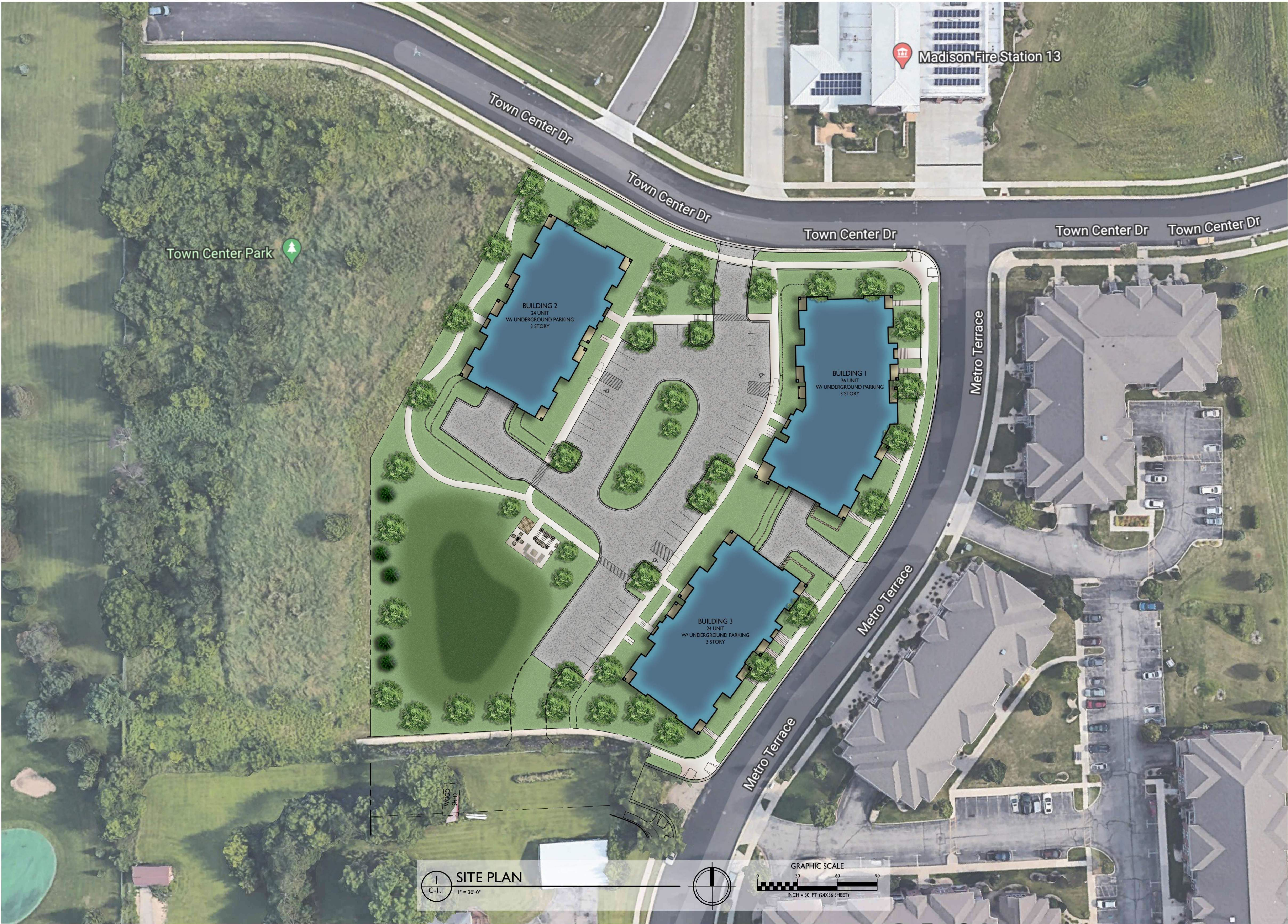




Development Site

Context Photos





ISSUED

PROJECT TITLE
**ELLEFSON
 METRO TECH
 APARTMENTS**

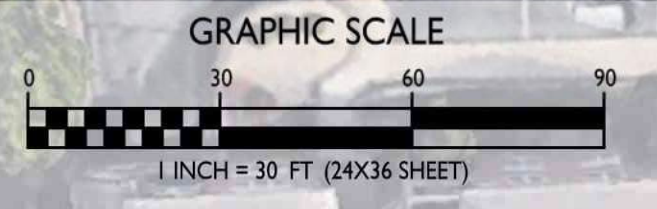
6321 Town Center Dr
 Madison, Wisconsin
 SHEET TITLE
Site Plan

SHEET NUMBER

C-1.1

PROJECT NO. **2108**
 © Knothe & Bruce Architects, LLC

SITE PLAN
 C-1.1 1" = 30'-0"



- TYPICAL MATERIALS:**
- ASPHALT SHINGLES
 - COMPOSITE BOARD & BATTEN
 - COMPOSITE FASCIA & SOFFIT
 - COMPOSITE HORIZ. SIDING
 - COMPOSITE WINDOW TRIM
 - PREFABRICATED ALUMINUM RAILING
 - PRECAST HEAD AND SILL
 - BRICK SOLDIER COARSE
 - BRICK



BUILDING #1
EAST ELEVATION ALONG METRO TERRACE
 1
 A-2.1 1/8"=1'-0"

ISSUED
 Issued for Land Use Submittal - March 31, 2021
 Issued for UDC Submittal - March 31, 2021

- TYPICAL MATERIALS:**
- ASPHALT SHINGLES
 - COMPOSITE BOARD & BATTEN
 - COMPOSITE FASCIA & SOFFIT
 - COMPOSITE HORIZ. SIDING
 - COMPOSITE WINDOW TRIM
 - PREFABRICATED ALUMINUM RAILING
 - BRICK SOLDIER COARSE
 - BRICK
 - PRECAST HEAD AND SILL
 - PRECAST BAND



BUILDING #1
NORTH ELEVATION ALONG TOWN CENTER DR.
 2
 A-2.1 1/8"=1'-0"

PROJECT TITLE
ELLEFSON
METRO TECH
APARTMENTS

EXTERIOR MATERIAL SCHEDULE		
BUILDING MATERIAL	MATERIAL	COLOR
ROOF	ASPHALT SHINGLES	APPALACHIAN SKY
HORIZONTAL LAP SIDING	COMPOSITE	SW2843 - ROYCROFT BRASS
BOARD PANEL SIDING	COMPOSITE	SW2833 - ROYCROFT VELLUM
FRIEZE, DECK, & WINDOW TRIM BOARDS, BATTEN	COMPOSITE	SW2842 - ROYCROFT SUEDE
FASCIA	COMPOSITE	SW2842 - ROYCROFT SUEDE
BRICK	BRICK VENEER	INTERSTATE - MOUNTAIN RED
CAST STONE SILLS & HEADS, BANDS	CAST STONE	BUFF
WINDOWS	VINYL	TAN
RAILING	ALUMINUM	DARK BRONZE
ENTRY DOORS	ALUMINUM STOREFRONT	DARK BRONZE
UNIT ENTRY DOORS	FIBERGLASS	MATCH WITH TRIM
GARAGE MAN DOOR	INSULATED METAL	MATCH O.H. DOOR
OVERHEAD GARAGE DOOR	ALUMINUM	ALMOND

6321 Town Center Dr
 Madison, Wisconsin
 SHEET TITLE
Building #1
Exterior
Elevations

SHEET NUMBER

A-2.1

- TYPICAL MATERIALS:
- ASPHALT SHINGLES
 - COMPOSITE BOARD & BATTEN
 - COMPOSITE FASCIA & SOFFIT
 - COMPOSITE HORIZ. SIDING
 - COMPOSITE WINDOW TRIM
 - PREFABRICATED ALUMINUM RAILING
 - PRECAST HEAD AND SILL
 - BRICK SOLDIER COURSE
 - BRICK
 - PRECAST BAND



50'-11 1/2"

BUILDING #1
WEST ELEVATION
 1
 A-2.2
 1/8"=1'-0"

- TYPICAL MATERIALS:
- ASPHALT SHINGLES
 - COMPOSITE BOARD & BATTEN
 - COMPOSITE FASCIA & SOFFIT
 - COMPOSITE HORIZ. SIDING
 - COMPOSITE WINDOW TRIM
 - PREFABRICATED ALUMINUM RAILING
 - PRECAST HEAD AND SILL
 - BRICK SOLDIER COURSE
 - BRICK
 - RECESSED BRICK COURSE



BUILDING #1
SOUTH ELEVATION
 2
 A-2.2
 1/8"=1'-0"

EXTERIOR MATERIAL SCHEDULE		
BUILDING MATERIAL	MATERIAL	COLOR
ROOF	ASPHALT SHINGLES	APPALACHIAN SKY
HORIZONTAL LAP SIDING	COMPOSITE	SW2843 - ROYCROFT BRASS
BOARD PANEL SIDING	COMPOSITE	SW2833 - ROYCROFT VELLUM
FRIEZE, DECK, & WINDOW TRIM BOARDS, BATTEN	COMPOSITE	SW2842 - ROYCROFT SUEDE
FASCIA	COMPOSITE	SW2842 - ROYCROFT SUEDE
BRICK	BRICK VENEER	INTERSTATE - MOUNTAIN RED
CAST STONE SILLS & HEADS, BANDS	CAST STONE	BUFF
WINDOWS	VINYL	TAN
RAILING	ALUMINUM	DARK BRONZE
ENTRY DOORS	ALUMINUM STOREFRONT	DARK BRONZE
UNIT ENTRY DOORS	FIBERGLASS	MATCH WITH TRIM
GARAGE MAN DOOR	INSULATED METAL	MATCH O.H. DOOR
OVERHEAD GARAGE DOOR	ALUMINUM	ALMOND

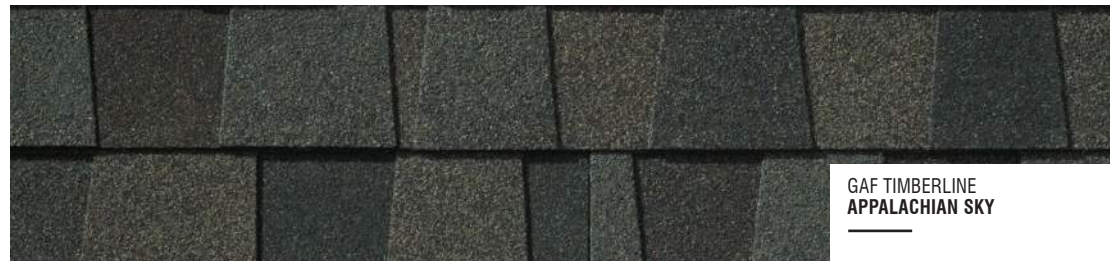
ISSUED
 Issued for Land Use Submittal - March 31, 2021
 Issued for UDC Submittal - March 31, 2021

PROJECT TITLE
ELLEFSON
METRO TECH
APARTMENTS

6321 Town Center Dr
 Madison, Wisconsin
 SHEET TITLE
Building #1
Exterior
Elevations

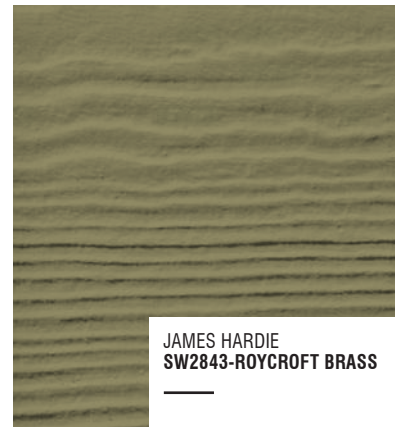
SHEET NUMBER

A-2.2



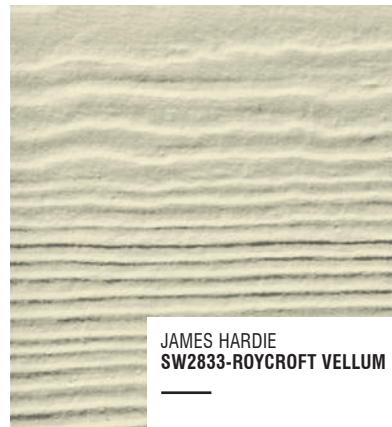
GAF TIMBERLINE
APPALACHIAN SKY

SHINGLES



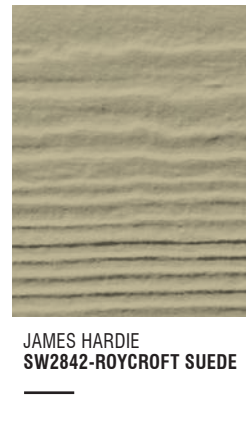
JAMES HARDIE
SW2843-ROYCROFT BRASS

HORIZONTAL SIDING



JAMES HARDIE
SW2833-ROYCROFT VELLUM

**PANEL SIDING
COMPOSITE SIDING & TRIM**



JAMES HARDIE
SW2842-ROYCROFT SUEDE

TRIM



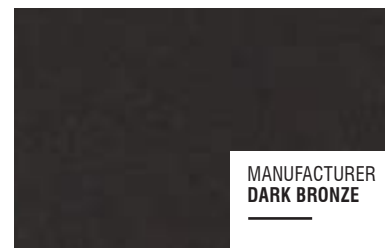
EDWARDS
BUFF | SMOOTH

CAST STONE SILLS, HEADS & BANDS



INTERSTATE BRICK
MOUNTAIN RED

BRICK VENEER



MANUFACTURER
DARK BRONZE

**COMMON ENTRY DOORS
ALUM. RAILINGS**



MANUFACTURER
ALMOND

**WINDOWS
UNIT ENTRY DOORS**

EXTERIOR MATERIAL SCHEDULE		
BUILDING MATERIAL	MATERIAL	COLOR
ROOF	ASPHALT SHINGLES	APPALACHIAN SKY
HORIZONTAL LAP SIDING	COMPOSITE	SW2843 - ROYCROFT BRASS
BOARD PANEL SIDING	COMPOSITE	SW2833 - ROYCROFT VELLUM
FREIZE, DECK, & WINDOW TRIM BOARDS, BATTEN	COMPOSITE	SW2842 - ROYCROFT SUEDE
FASCIA	COMPOSITE	SW2842 - ROYCROFT SUEDE
BRICK	BRICK VENEER	INTERSTATE - MOUNTAIN RED
CAST STONE SILLS & HEADS, BANDS	CAST STONE	BUFF
WINDOWS	VINYL	TAN
RAILING	ALUMINUM	DARK BRONZE
ENTRY DOORS	ALUMINUM STOREFRONT	DARK BRONZE
UNIT ENTRY DOORS	FIBERGLASS	MATCH WITH TRIM
GARAGE MAN DOOR	INSULATED METAL	MATCH O.H. DOOR
OVERHEAD GARAGE DOOR	ALUMINUM	ALMOND



Metro Tech Apartments

Building #1
April 23, 2021





Metro Tech Apartments

Building #1 & #3
April 23, 2021





Metro Tech Apartments

Building #3
April 23, 2021





Metro Tech Apartments

Building #2
April 23, 2021

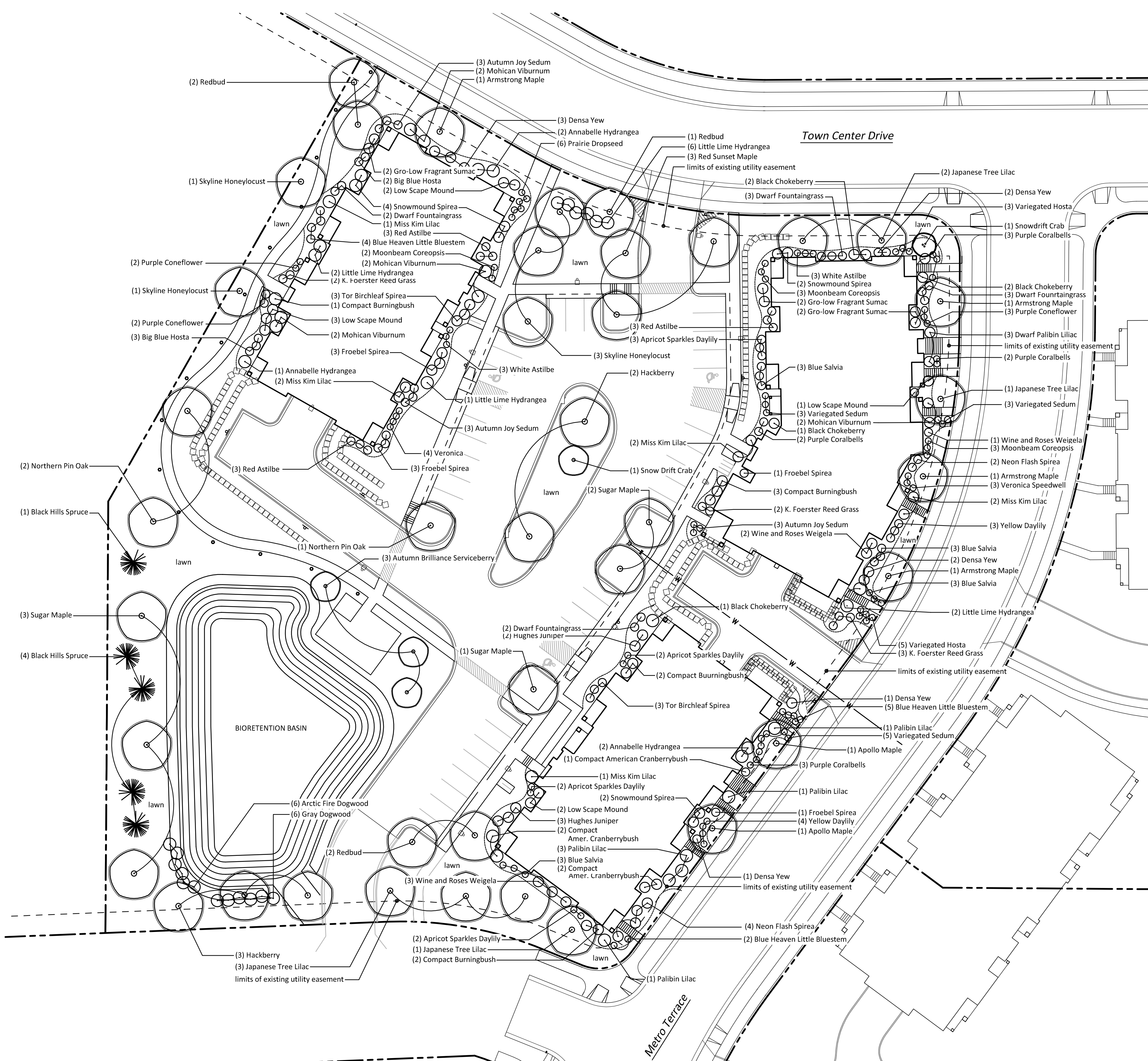




Metro Tech Apartments

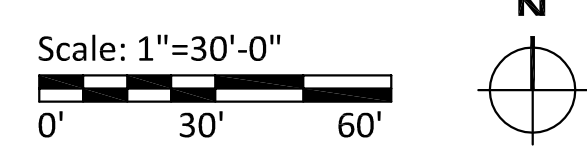
Building #1
April 23, 2021





1 LANDSCAPE PLAN

- Notes:
- Individual tree and shrub groupings found within lawn areas are to receive wood mulch rings and/or wood mulch beds consisting of a mixture of mulch spread to a 4" min. depth over a pre-emergent herbicide.
 - "Lawn" areas shall be finish graded and seeded at a rate of 4 lbs. per 1,000 sq. ft. Basis of Design: Madison Parks Lawn Seed Mix. EarthCarpet Corporation.
 - "Wood mulch" to be finely shredded hardwood organic bark mulch, no dyed mulches, installed at a depth of 4".
 - Contractor is responsible for repairing any and all damage to the adjacent properties. Planted areas shall be replanted, damaged lawn areas shall be repaired with sod and adjacent curbs and pavement shall be re-paved.
 - Maintenance, watering and warranty of plants to extend for 12 months after project completion/acceptance. Maintenance, watering and warranty period for seed to extend 60 days from project completion/acceptance of installation.
 - Landscape contractor shall verify topsoil depth and notify Owner of any deficiency. Replacement topsoil shall be clean of stones, weeds, and other debris.



Landscape Calculations and Distribution (28.142):
 Five (5) landscape points shall be provided per each (300) sf of developed area
 Total sf of developed area = 79,203 sf
 Developed area divided by (300) x 5 = 1,320 Points Required

Development Frontage Landscaping
 Total lf of lot frontage = 967 lf (includes future un-built road frontage)
 Required Trees = 32 * Provided Trees = 26
 Required Shrubs = 161 ** Provided Shrubs = 74

Tabulation of Points and Credits (includes Development Frontage Landscaping):

Plant Type/Element	Min. size	Points	Proposed Qty.	Pts.
Overstory Deciduous Tree	2 1/2" cal.	35	28	980
Ornamental Tree	1 1/2" cal.	15	17	255
Tall Evergreen Tree	5' ht.	35	5	175
Shrub, deciduous	18" or 3 gal.	3	128	384
Shrub, evergreen	18" or 3 gal.	4	14	56
Ornamental grasses/perennials	18" or 3 gal.	2	142	284
Ornamental fence or wall	na	4 per 10 lf	-	-
Total				2,134

2,134 Total Points Provided (1,320 Required)

* waiver for 6 frontage trees requested due to existing perimeter utility easement and limited available space
 ** waiver for 87 frontage shrubs requested due to limited amount of space and existing perimeter utility easement

TREES

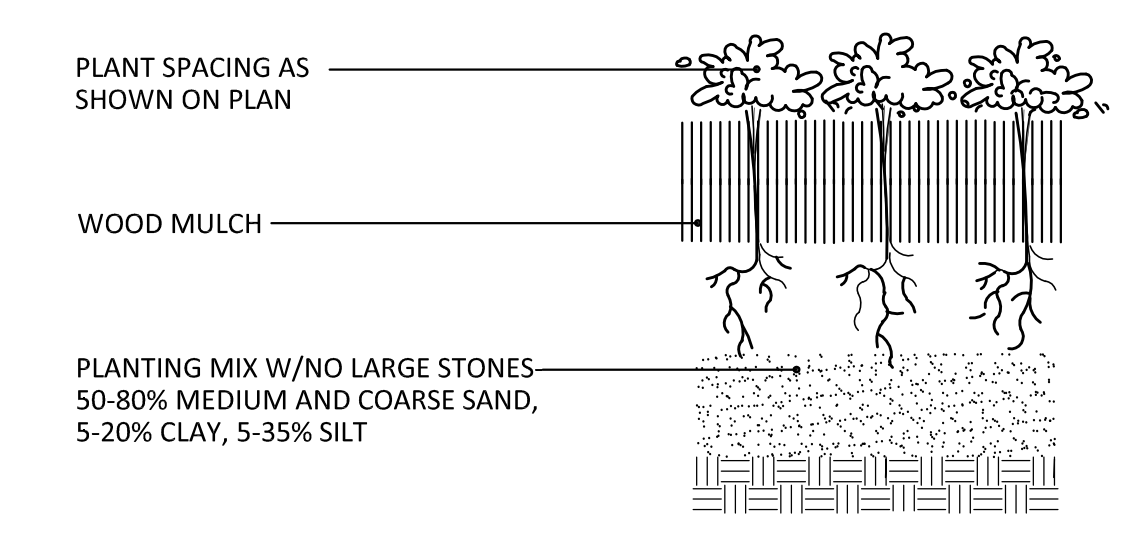
Species	SIZE	ROOT	QTY.
Apollo Maple	2 1/2" CAL.	B&B	2
Autumn Brilliance Serviceberry	2 1/2" CAL.	B&B	3
Red Sunset Maple	2 1/2" CAL.	B&B	3
Skyline Honeylocust	2 1/2" CAL.	B&B	5
Sugar Maple	2 1/2" CAL.	B&B	6
Redbud	2 1/2" CAL.	B&B	5
Black Hills Spruce	6'	B&B	5
Hackberry	2 1/2" CAL.	B&B	5
Snowdrift Crab	6'	B&B	2
Northern Pin Oak	2 1/2" CAL.	B&B	3
Armstrong Maple	2 1/2" CAL.	B&B	4
Japanese Tree Lilac	2 1/2" CAL.	B&B	7

SHRUBS

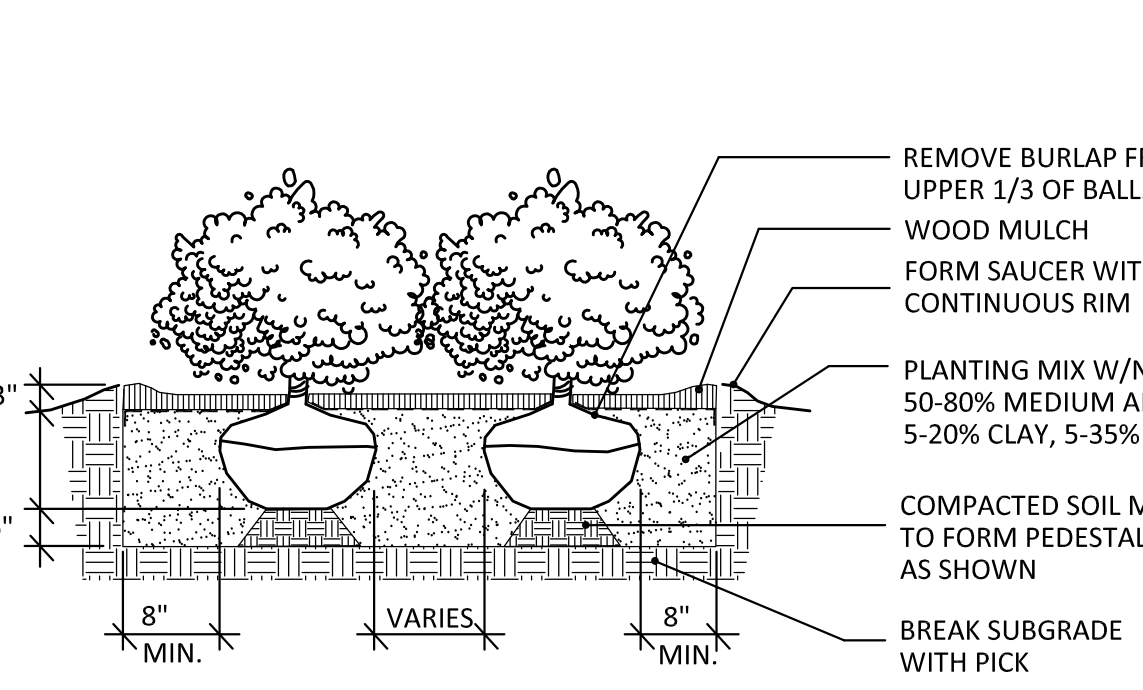
Species	SIZE	CONT.	QTY.
Annabelle Hydrangea	18"	CONT.	5
Neon Flash Spirea	18"	CONT.	6
Black Chokeberry	18"	CONT.	6
Compact Burningbush	3'	CONT.	8
Compact American Cranberrybush	3'	CONT.	5
Dwarf Korean Lilac (Palibin)	3'	CONT.	9
Froebel Spirea	18"	CONT.	8
Gro-Low Fragrant Sumac	18"	CONT.	6
Miss Kim Lilac	3'	CONT.	8
Mohican Viburnum	4'	CONT.	8
Tor Birchleaf Spirea	18"	CONT.	6
Wine and Roses Weigela	18"	CONT.	6
Low Scape Mound	18"	CONT.	8
Snowmound Spirea	18"	CONT.	9
Hughes Juniper	18"	CONT.	5
Gray Dogwood	3'	CONT.	6
Arctic Fire Dogwood	3'	CONT.	6
Little Lime Hydrangea	3'	CONT.	10

PERENNIALS

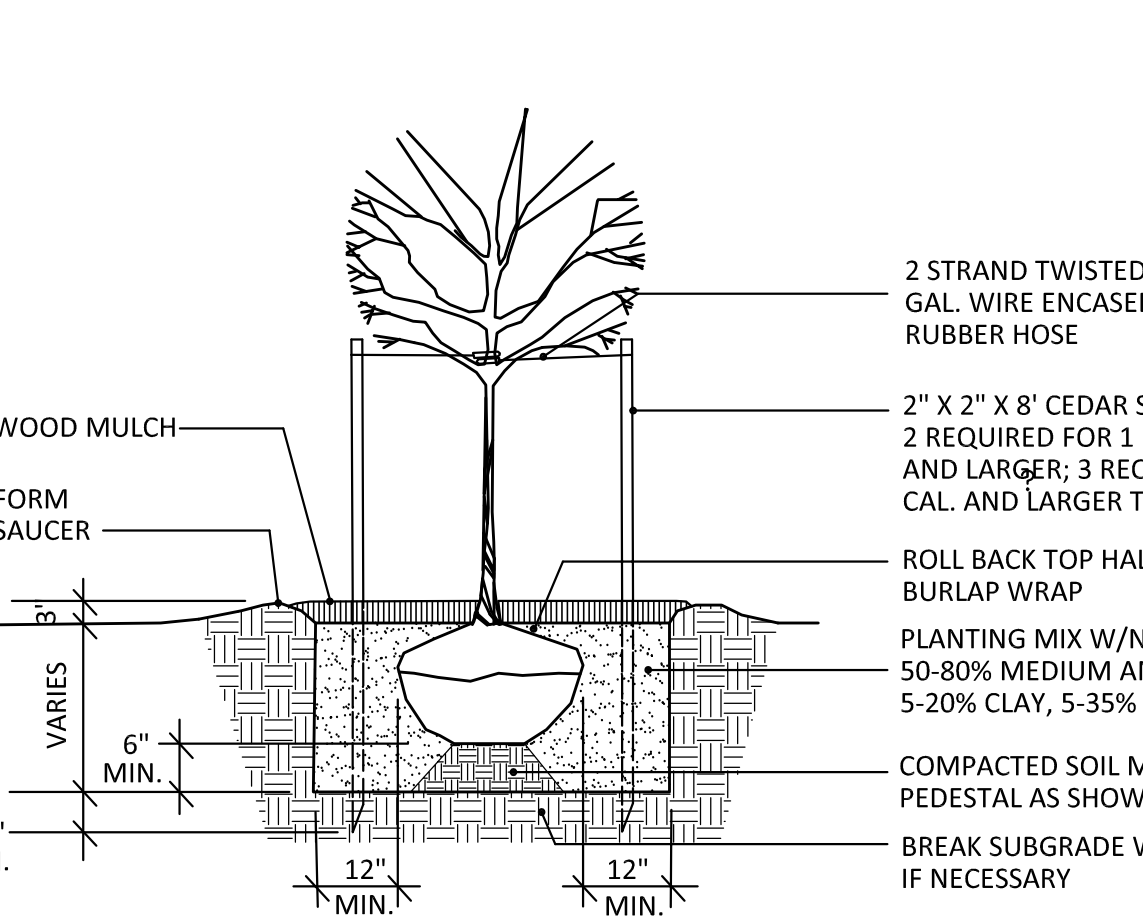
Species	SIZE	CONT.	QTY.
Autumn Joy Sedum	1 GAL.	CONT.	9
Big Blue Hosta	1 GAL.	CONT.	5
Blue Salvia	1 GAL.	CONT.	12
Dwarf Fountaingrass	1 GAL.	CONT.	10
Moonbeam Coreopsis	1 GAL.	CONT.	8
Apricot Sparkles Daylily	1 GAL.	CONT.	9
Blue Heaven Little Bluestem	1 GAL.	CONT.	11
Purple Coralbells	1 GAL.	CONT.	10
Red Astilbe	1 GAL.	CONT.	9
Variegated Hosta	1 GAL.	CONT.	8
Variegated Sedum	1 GAL.	CONT.	11
Veronica (Speedwell)	1 GAL.	CONT.	7
White Astilbe	1 GAL.	CONT.	6
Yellow Daylily	1 GAL.	CONT.	7
Karl Foerster Feather Reed Grass	1 GAL.	CONT.	7
Purple Coneflower	1 GAL.	CONT.	7
Prairie Dropseed	1 GAL.	CONT.	6



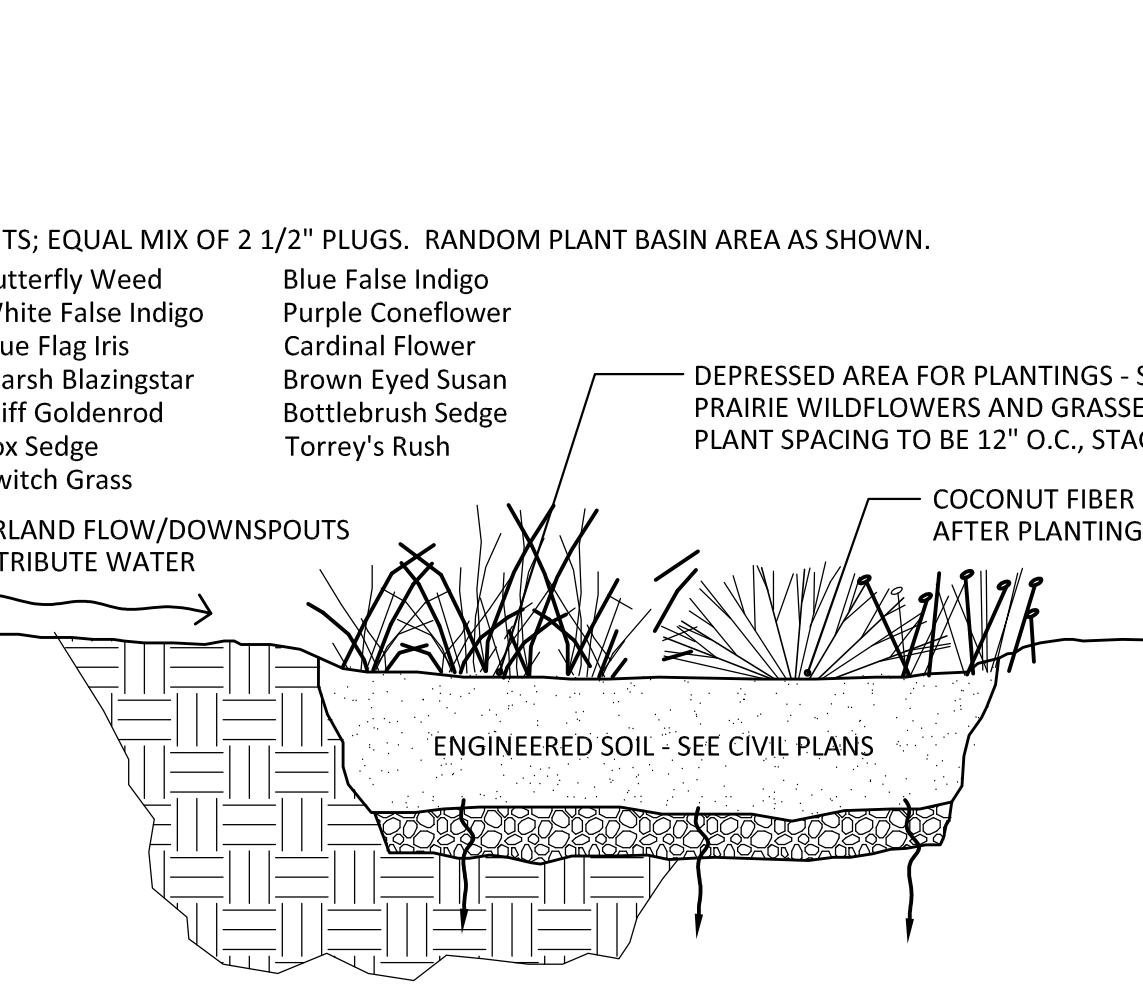
2 PERENNIAL PLANTING



3 SHRUB PLANTING



4 TREE PLANTING



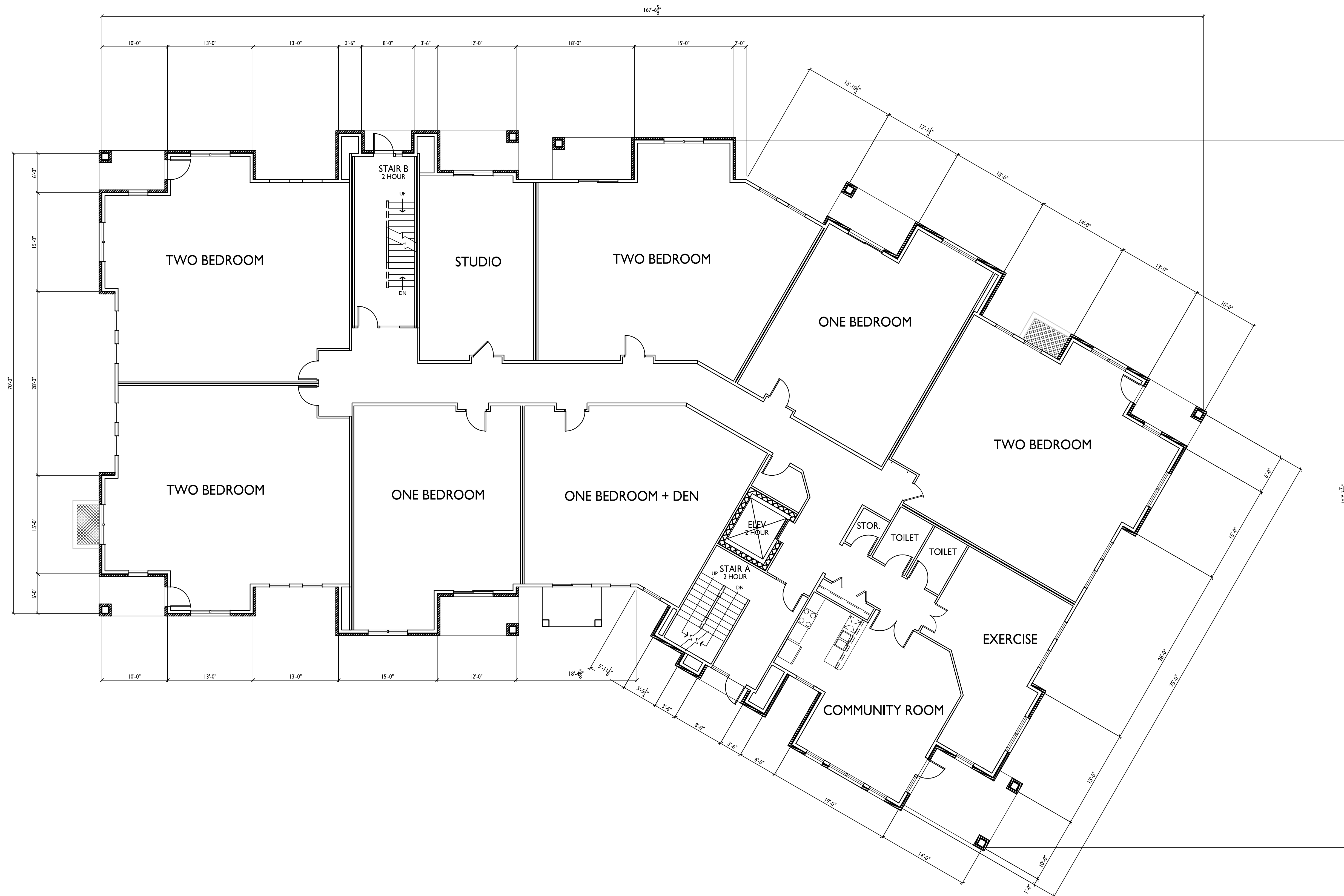
5 BIORETENTION BASIN PLANTS





knothe • bruce
ARCHITECTS

Phone: 7601 University Ave., Ste 201
608.836.3690 Middleton, WI 53562



ISSUED
Issued for Land Use Submittal - March 31, 2021
Issued for UDC Submittal - March 31, 2021

PROJECT TITLE
**ELLEFSON
METRO TECH
APARTMENTS**

6321 Town Center Dr
Madison, Wisconsin
SHEET TITLE
**Building #1
First Floor Plan**

**BUILDING #1
FIRST FLOOR PLAN**
1/8" = 1'-0"

SHEET NUMBER

A-1.1

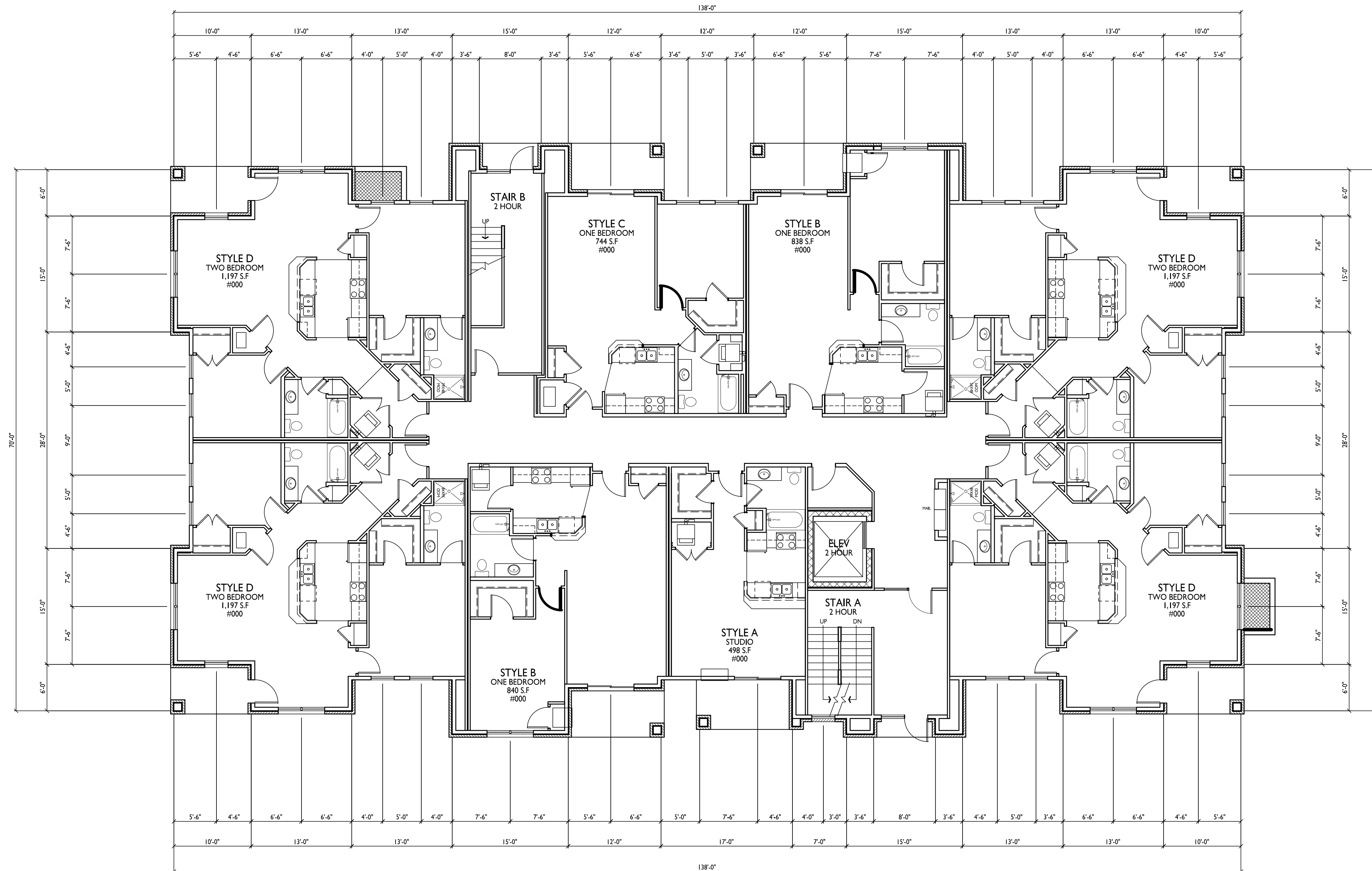
PROJECT NO. **2108**

© Knothe & Bruce Architects, LLC



knothe • bruce
ARCHITECTS

Phone: 7601 University Ave., Ste 201
608.836.3690 Middleton, WI 53562

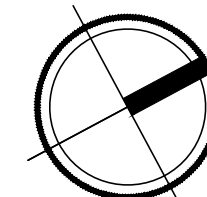


ISSUED
Issued for Land Use Submittal - March 31, 2021
Issued for UDC Submittal - March 31, 2021

PROJECT TITLE
**ELLEFSON
METRO TECH
APARTMENTS**

6321 Town Center Dr
Madison, Wisconsin
SHEET TITLE
**Building #2
First Floor Plan &
Typical Unit Plans**

**BUILDING #2 FIRST FLOOR PLAN &
TYPICAL UNIT PLANS**
1
A-1.1 1/8" = 1'-0"



SHEET NUMBER

A-1.1

PROJECT NO. **2108**

© Knothe & Bruce Architects, LLC

- TYPICAL MATERIALS:**
- ASPHALT SHINGLES
 - COMPOSITE BOARD & BATTEN
 - COMPOSITE FASCIA & SOFFIT
 - COMPOSITE SIDING
 - COMPOSITE WINDOW TRIM
 - PREFABRICATED ALUMINUM RAILING
 - PRECAST HEAD AND SILL
 - BRICK SOLDIER COARSE
 - BRICK
 - PRECAST BAND



BUILDING #2
EAST ELEVATION
 1
 A-2.1 1/8"=1'-0"

- TYPICAL MATERIALS:**
- ASPHALT SHINGLES
 - COMPOSITE BOARD & BATTEN
 - COMPOSITE FASCIA & SOFFIT
 - COMPOSITE HORIZ. SIDING
 - COMPOSITE WINDOW TRIM
 - PREFABRICATED ALUMINUM RAILING
 - BRICK
 - BRICK SOLDIER COARSE
 - PRECAST HEAD AND SILL



BUILDING #2
NORTH ELEVATION ALONG TOWN CENTER DR.
 2
 A-2.1 1/8"=1'-0"

EXTERIOR MATERIAL SCHEDULE		
BUILDING MATERIAL	MATERIAL	COLOR
ROOF	ASPHALT SHINGLES	APPALACHIAN SKY
HORIZONTAL LAP SIDING	COMPOSITE	SW2843 - ROYCROFT BRASS
BOARD PANEL SIDING	COMPOSITE	SW2833 - ROYCROFT VELLUM
FRIEZE, DECK, & WINDOW TRIM BOARDS, BATTEN	COMPOSITE	SW2842 - ROYCROFT SUEDE
FASCIA	COMPOSITE	SW2842 - ROYCROFT SUEDE
BRICK	BRICK VENEER	INTERSTATE - MOUNTAIN RED
CAST STONE SILLS & HEADS, BANDS	CAST STONE	BUFF
WINDOWS	VINYL	TAN
RAILING	ALUMINUM	DARK BRONZE
ENTRY DOORS	ALUMINUM STOREFRONT	DARK BRONZE
UNIT ENTRY DOORS	FIBERGLASS	MATCH WITH TRIM
GARAGE MAN DOOR	INSULATED METAL	MATCH O.H. DOOR
OVERHEAD GARAGE DOOR	ALUMINUM	ALMOND

ISSUED
 Issued for Land Use Submittal - March 31, 2021
 Issued for UDC Submittal - March 31, 2021

PROJECT TITLE
ELLEFSON
METRO TECH
APARTMENTS

6321 Town Center Dr
 Madison, Wisconsin
 SHEET TITLE
Building #2
Exterior
Elevations

SHEET NUMBER

A-2.1

- TYPICAL MATERIALS:**
- ASPHALT SHINGLES
 - COMPOSITE BOARD & BATTEN
 - COMPOSITE FASCIA & SOFFIT
 - COMPOSITE HORIZ. SIDING
 - COMPOSITE WINDOW TRIM
 - PREFABRICATED ALUMINUM RAILING
 - PRECAST HEAD AND SILL
 - BRICK SOLDIER COARSE
 - BRICK



BUILDING #2
WEST ELEVATION
 1
 A-2.2 1/8"=1'-0"

- TYPICAL MATERIALS:**
- ASPHALT SHINGLES
 - COMPOSITE BOARD & BATTEN
 - COMPOSITE FASCIA & SOFFIT
 - COMPOSITE HORIZ. SIDING
 - COMPOSITE WINDOW TRIM
 - PREFABRICATED ALUMINUM RAILING
 - BRICK
 - BRICK SOLDIER COARSE
 - PRECAST HEAD AND SILL
 - PRECAST BAND



BUILDING #2
SOUTH ELEVATION
 2
 A-2.2 1/8"=1'-0"

ISSUED
 Issued for Land Use Submittal - March 31, 2021
 Issued for UDC Submittal - March 31, 2021

PROJECT TITLE
ELLEFSON
METRO TECH
APARTMENTS

6321 Town Center Dr
 Madison, Wisconsin
 SHEET TITLE
Building #2
 Exterior
 Elevations

SHEET NUMBER

A-2.2

PROJECT NO. **2108**
 © Knothe & Bruce Architects, LLC



BUILDING #3
EAST ELEVATION ALONG METRO TERRACE
 1
 A-2.1 1/8"=1'-0"

ISSUED
 Issued for Land Use Submittal - March 31, 2021
 Issued for UDC Submittal - March 31, 2021



BUILDING #3
SOUTH ELEVATION
 2
 A-2.1 1/8"=1'-0"

PROJECT TITLE
ELLEFSON
METRO TECH
APARTMENTS

EXTERIOR MATERIAL SCHEDULE		
BUILDING MATERIAL	MATERIAL	COLOR
ROOF	ASPHALT SHINGLES	APPALACHIAN SKY
HORIZONTAL LAP SIDING	COMPOSITE	SW2843 - ROYCROFT BRASS
BOARD PANEL SIDING	COMPOSITE	SW2833 - ROYCROFT VELLUM
FRIEZE, DECK, & WINDOW TRIM BOARDS, BATTEN	COMPOSITE	SW2842 - ROYCROFT SUEDE
FASCIA	COMPOSITE	SW2842 - ROYCROFT SUEDE
BRICK	BRICK VENEER	INTERSTATE - MOUNTAIN RED
CAST STONE SILLS & HEADS, BANDS	CAST STONE	BUFF
WINDOWS	VINYL	TAN
RAILING	ALUMINUM	DARK BRONZE
ENTRY DOORS	ALUMINUM STOREFRONT	DARK BRONZE
UNIT ENTRY DOORS	FIBERGLASS	MATCH WITH TRIM
GARAGE MAN DOOR	INSULATED METAL	MATCH O.H. DOOR
OVERHEAD GARAGE DOOR	ALUMINUM	ALMOND

6321 Town Center Dr
 Madison, Wisconsin
 SHEET TITLE
Building #3
Exterior
Elevations

SHEET NUMBER
A-2.1
 PROJECT NO. **2108**
 © Knothe & Bruce Architects, LLC

- TYPICAL MATERIALS:**
- ASPHALT SHINGLES
 - COMPOSITE BOARD & BATTEN
 - COMPOSITE FASCIA & SOFFIT
 - COMPOSITE HORIZ. SIDING
 - COMPOSITE WINDOW TRIM
 - PREFABRICATED ALUMINUM RAILING
 - PRECAST HEAD AND SILL
 - BRICK SOLID CORE COMPOSITE
 - BRICK



BUILDING #3
WEST ELEVATION
 1
 A-2.2 1/8"=1'-0"

ISSUED
 Issued for Land Use Submittal - March 31, 2021
 Issued for UDC Submittal - March 31, 2021

- TYPICAL MATERIALS:**
- ASPHALT SHINGLES
 - COMPOSITE BOARD & BATTEN
 - COMPOSITE FASCIA & SOFFIT
 - COMPOSITE HORIZ. SIDING
 - COMPOSITE WINDOW TRIM
 - PREFABRICATED ALUMINUM RAILING
 - BRICK
 - BRICK SOLID CORE COMPOSITE
 - PRECAST HEAD AND SILL



BUILDING #3
NORTH ELEVATION
 2
 A-2.2 1/8"=1'-0"

PROJECT TITLE
ELLEFSON
METRO TECH
APARTMENTS

EXTERIOR MATERIAL SCHEDULE		
BUILDING MATERIAL	MATERIAL	COLOR
ROOF	ASPHALT SHINGLES	APPALACHIAN SKY
HORIZONTAL LAP SIDING	COMPOSITE	SW2843 - ROYCROFT BRASS
BOARD PANEL SIDING	COMPOSITE	SW2833 - ROYCROFT VELLUM
FRIEZE, DECK, & WINDOW TRIM BOARDS, BATTEN	COMPOSITE	SW2842 - ROYCROFT SUEDE
FASCIA	COMPOSITE	SW2842 - ROYCROFT SUEDE
BRICK	BRICK VENEER	INTERSTATE - MOUNTAIN RED
CAST STONE SILLS & HEADS, BANDS	CAST STONE	BUFF
WINDOWS	VINYL	TAN
RAILING	ALUMINUM	DARK BRONZE
ENTRY DOORS	ALUMINUM STOREFRONT	DARK BRONZE
UNIT ENTRY DOORS	FIBERGLASS	MATCH WITH TRIM
GARAGE MAN DOOR	INSULATED METAL	MATCH O.H. DOOR
OVERHEAD GARAGE DOOR	ALUMINUM	ALMOND

6321 Town Center Dr
 Madison, Wisconsin
 SHEET TITLE
Building #3
Exterior
Elevations

SHEET NUMBER
A-2.2
 PROJECT NO. **2108**
 © Knothe & Bruce Architects, LLC