

808 HUGHES PLACE – VILLAGE ON PARK PARKING STRUCTURE AND SITE IMPROVEMENTS

File 9323

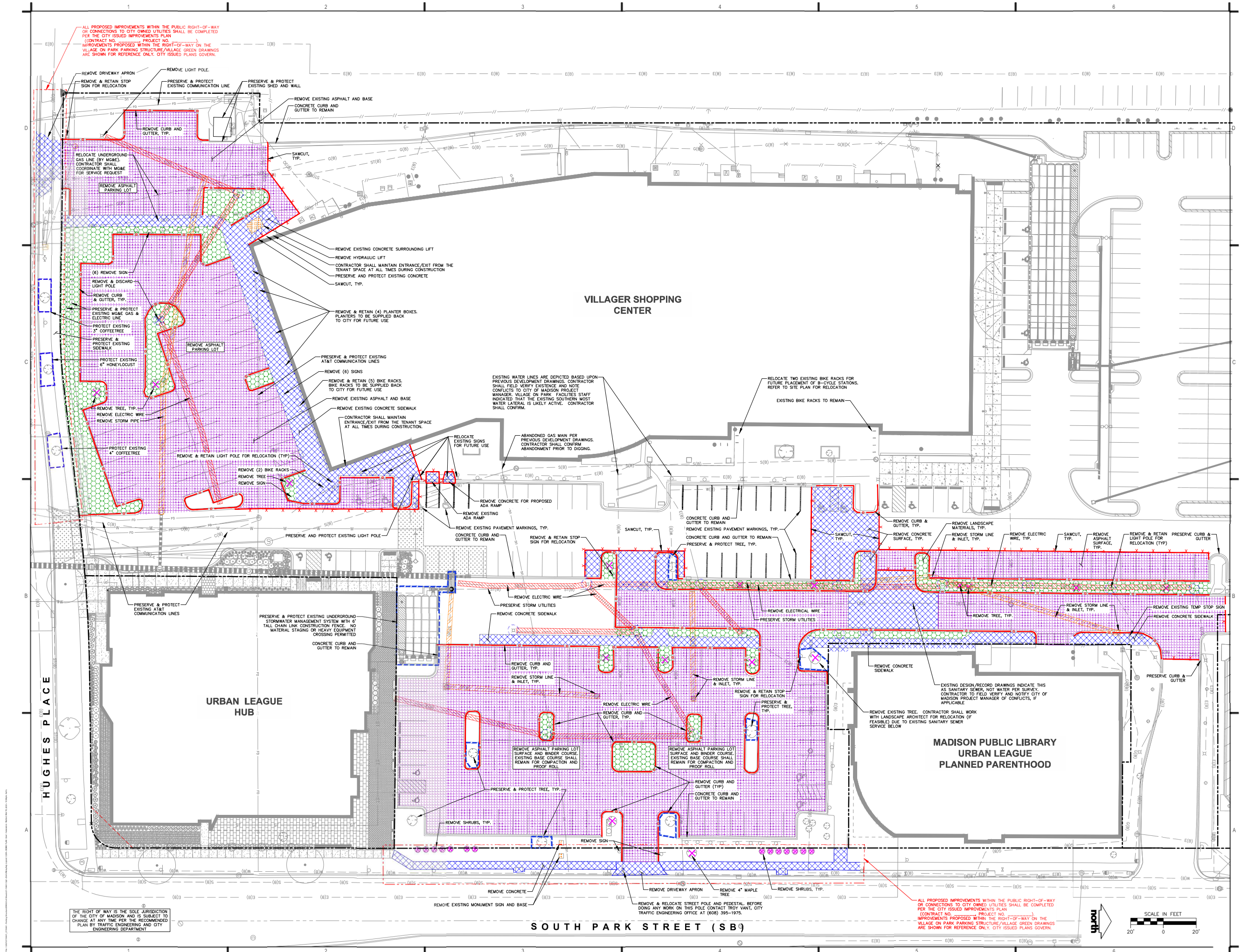
MUNIS 14063

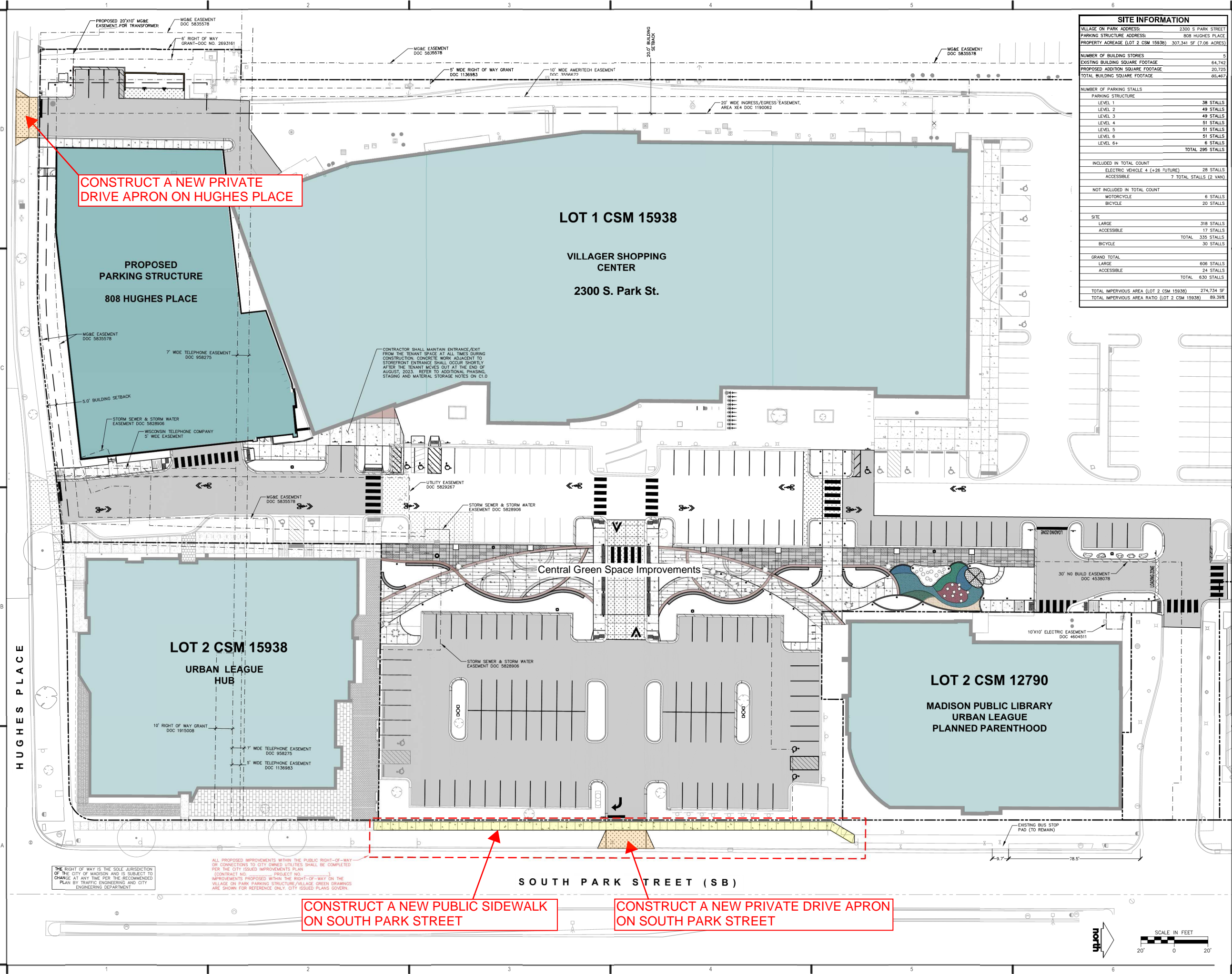
Developer: Community Development Authority



Summary of Improvements:

- Construct new public sidewalk on South Park Street.
- Construct new private drive apron on South Park Street
- Construct new private drive apron on Hughes Place and replace public sidewalk as needed.





SITE INFORMATION	
VILLAGE ON PARK ADDRESS:	2300 S PARK STREET
PARKING STRUCTURE ADDRESS:	808 HUGHES PLACE
PROPERTY ACREAGE (LOT 2 CSM 15938)	307,341 SF (7.06 ACRES)
NUMBER OF BUILDING STORIES	5
EXISTING BUILDING SQUARE FOOTAGE	64,742
PROPOSED ADDITION SQUARE FOOTAGE	20,725
TOTAL BUILDING SQUARE FOOTAGE	85,467
NUMBER OF PARKING STALLS	
PARKING STRUCTURE	38 STALLS
LEVEL 1	49 STALLS
LEVEL 2	49 STALLS
LEVEL 3	51 STALLS
LEVEL 4	51 STALLS
LEVEL 5	51 STALLS
LEVEL 6	51 STALLS
LEVEL 6+	6 STALLS
TOTAL	296 STALLS
INCLUDED IN TOTAL COUNT	
ELECTRIC VEHICLE 4 (+26 FUTURE)	28 STALLS
ACCESSIBLE	7 TOTAL STALLS (2 VAN)
NOT INCLUDED IN TOTAL COUNT	
MOTORCYCLE	6 STALLS
BICYCLE	20 STALLS
SITE	318 STALLS
LARGE	17 STALLS
ACCESSIBLE	TOTAL 335 STALLS
BICYCLE	30 STALLS
GRAND TOTAL	606 STALLS
LARGE	24 STALLS
ACCESSIBLE	TOTAL 630 STALLS
TOTAL IMPERVIOUS AREA (LOT 2 CSM 15938)	274,734 SF
TOTAL IMPERVIOUS AREA RATIO (LOT 2 CSM 15938)	89.35%

GrāEF

1010 East Wisconsin Avenue,
Suite 202
Madison, WI 53703
608 / 242 1550

www.graef-usa.com



CLIENT:
Community Development Authority of the
City of Madison



Madison Municipal Building
215 Martin Luther King Jr Blvd
Suite 161
Madison, WI 53703

PROJECT TITLE:
VILLAGE ON PARK PARKING
STRUCTURE AND SITE
IMPROVEMENTS

808 HUGHES PLACE
MADISON, WI 53713

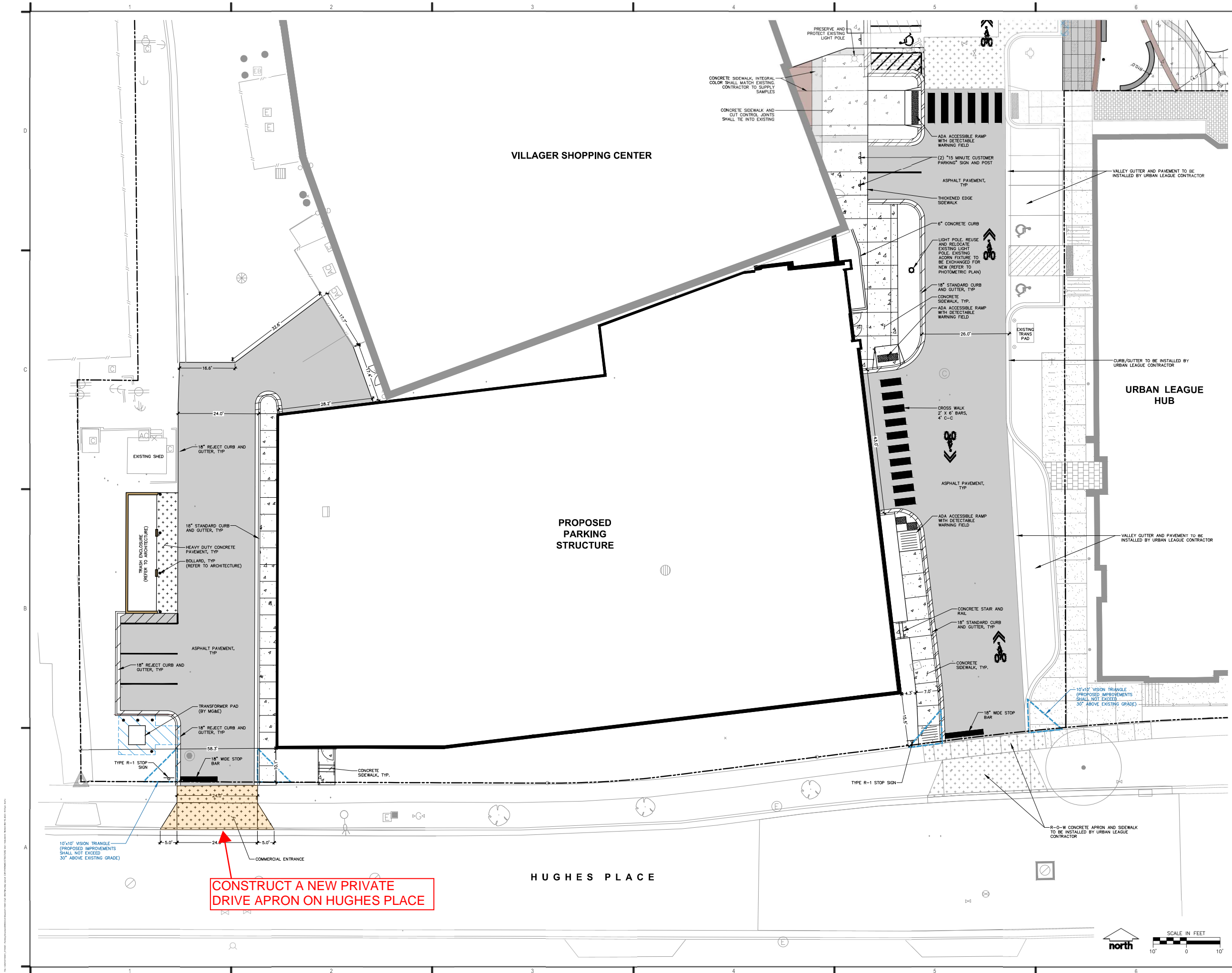
ISSUE:
03/17/2023 FINAL REVIEW

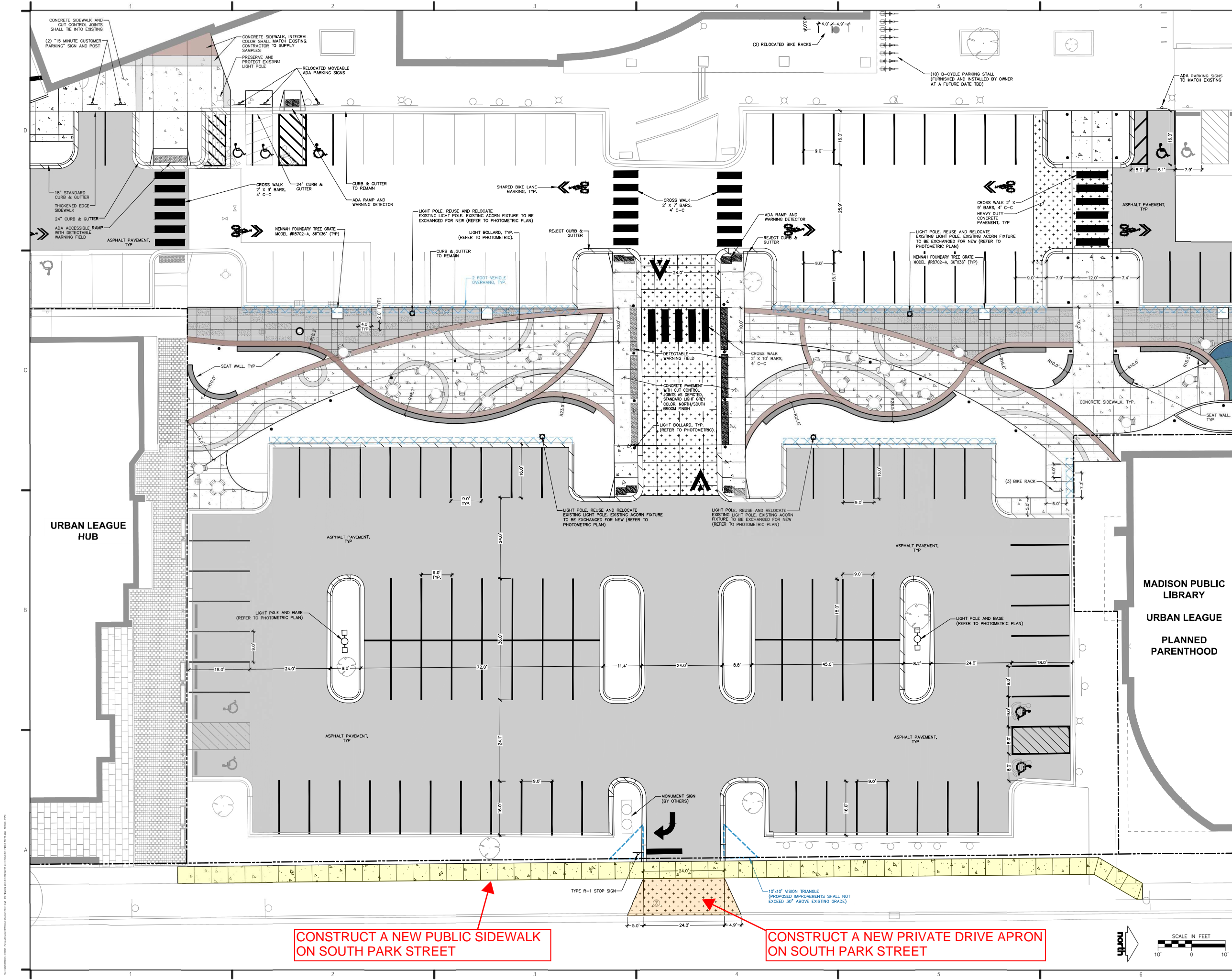
PROJECT INFORMATION:
PROJECT NUMBER: 20225013.00
DATE: 02/17/2023
DRAWN BY: MWS
CHECKED BY: KJY
APPROVED BY: AS NOTED

SHEET TITLE:
SITE PLAN -
OVERALL

SHEET NUMBER:

C300





1010 East Wisconsin Avenue,
Suite 202
Madison, WI 53703
608 / 242 1550

www.graef-usa.com



CLIENT:
Community Development Authority of the
City of Madison



Madison Municipal Building
215 Martin Luther King Jr Blvd
Suite 161
Madison, WI 53703

PROJECT TITLE:
VILLAGE ON PARK PARKING
STRUCTURE AND SITE
IMPROVEMENTS

808 HUGHES PLACE
MADISON, WI 53713
ISSUE:
03/17/2023 FINAL REVIEW

PROJECT INFORMATION:
PROJECT NUMBER: 20225013.00
DATE: 02/17/2023
DRAWN BY: MWS
CHECKED BY: KJY
APPROVED BY: AS NOTED

SHEET TITLE:
SITE PLAN -
VILLAGE GREEN SOUTH

SHEET NUMBER:
C302