

1

2

3

4

5

6

7

E



VIEW FROM NORTH



VIEW FROM NORTH



VIEW FROM NORTH

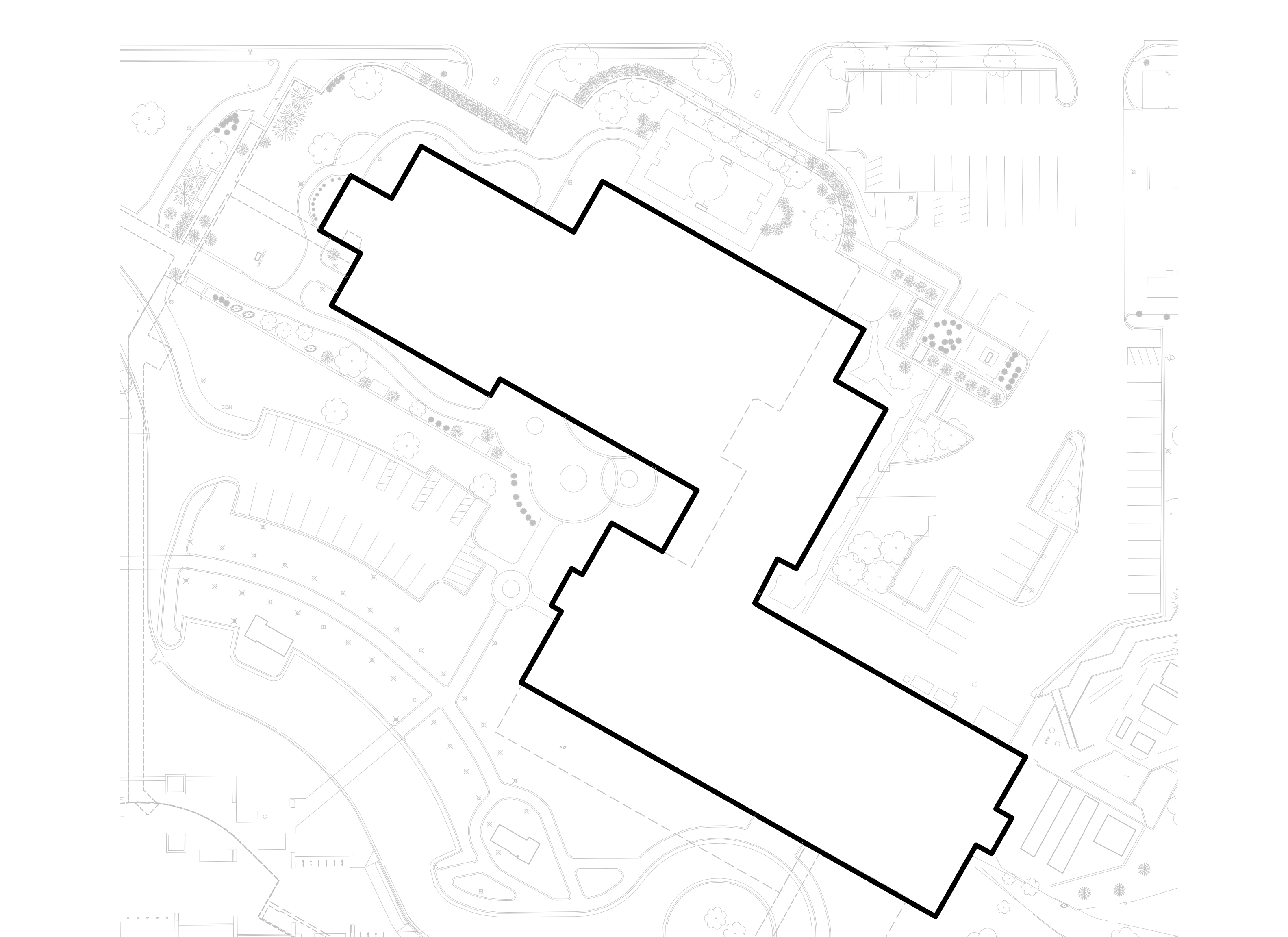


VIEW FROM NORTH

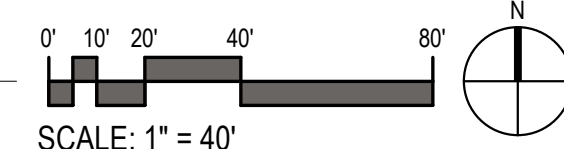
D



VIEW FROM NORTHWEST



5710 BUILDING PLAN
1" = 40'-0"



VIEW FROM EAST

C



VIEW FROM WEST

B



VIEW FROM SOUTH



VIEW FROM SOUTH



VIEW FROM SOUTH



VIEW FROM EAST

A



VIEW FROM SOUTH



VIEW FROM SOUTH



VIEW FROM SOUTH



VIEW FROM SOUTHEAST



milwaukee 333 East Chicago Street
Milwaukee, Wisconsin 53202
414.271.5350

madison 309 West Johnson Street, Suite 202
Madison, Wisconsin 53703
608.442.2550

denver 1899 Wynkoop Street, Suite 700
Denver, Colorado 80202
303.556.4500

PROJECT INFORMATION

CMFG 5710
DEMOLITION

D 5710 MINERAL
POINT ROAD
MADISON, WI

ISSUANCE AND REVISIONS

DATE	DESCRIPTION
09/23/2022	DEMOLITION PERMIT SUBMITTAL

C

KEY PLAN

B

SHEET INFORMATION

PROJECT MANAGER PK

PROJECT NUMBER 18451-100

EXISTING BUILDING
EXTERIOR PHOTOS

AD101

© 2021 Epstein Uhen Architects, Inc.

1

2

3

4

5

6

7

1

2

3

4

5

6

7

E



VIEW OF LOBBY DESK



VIEW OF LOBBY

D



VIEW OF TYPICAL OPEN OFFICE AREA



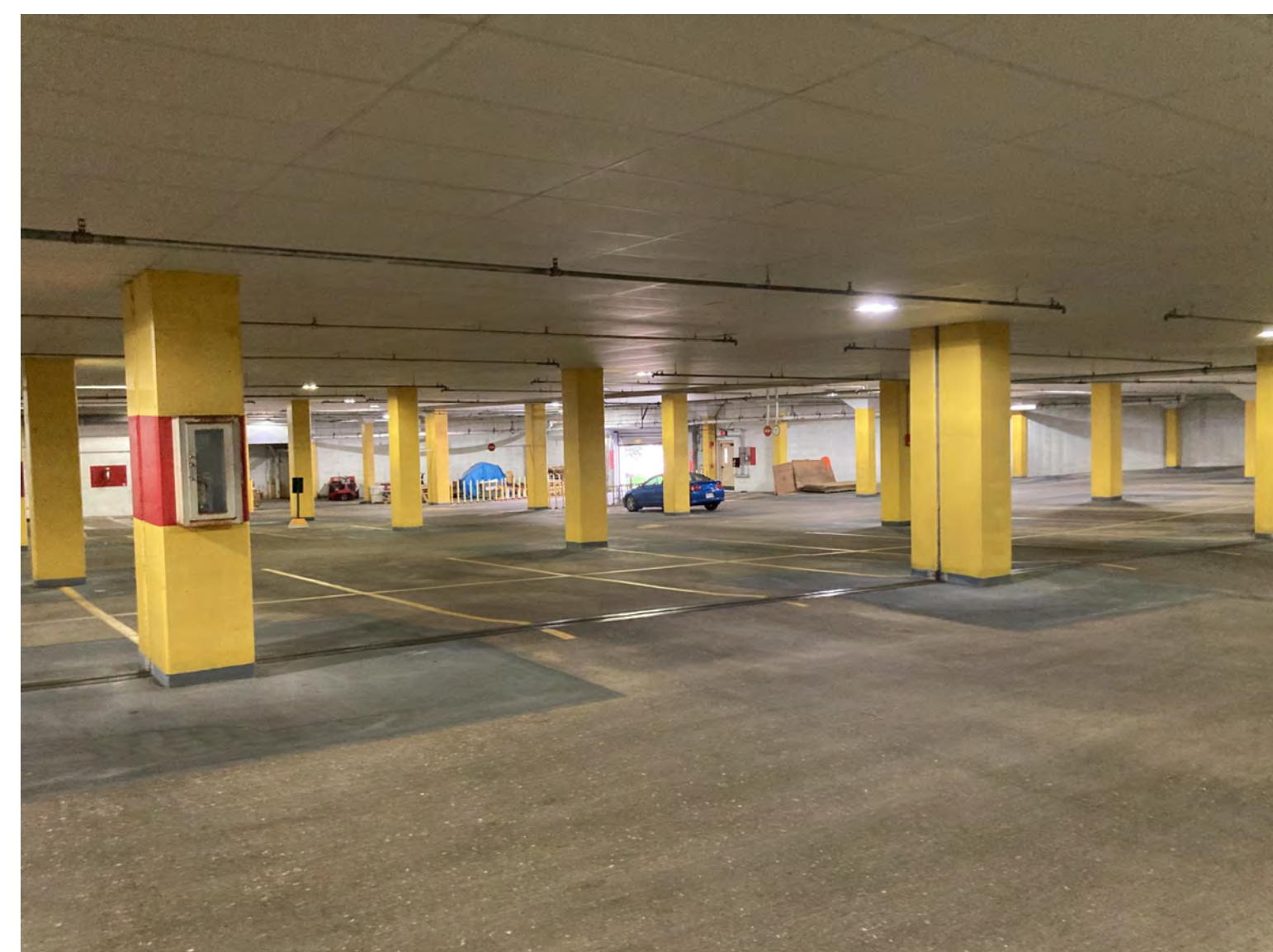
VIEW OF TYPICAL CONFERENCE ROOM



VIEW OF BUILDING CORE

C

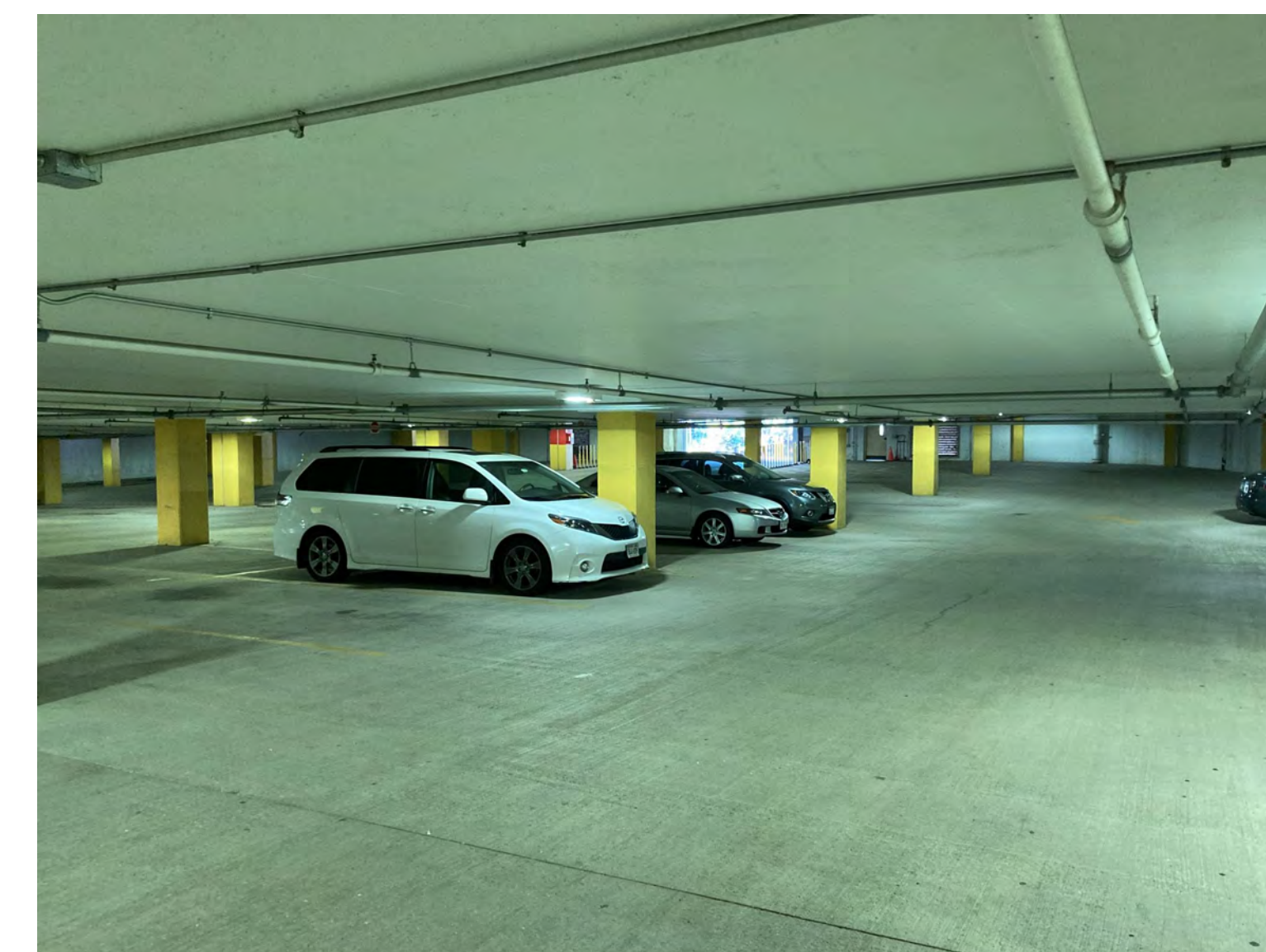
B



VIEW OF GROUND LEVEL PARKING



VIEW OF GROUND LEVEL PARKING



VIEW OF BASEMENT LEVEL PARKING

A



milwaukee 333 East Chicago Street
Milwaukee, Wisconsin 53202
414.271.5350

madison 309 West Johnson Street, Suite 202
Madison, Wisconsin 53703
608.442.2550

denver 1899 Wynkoop Street, Suite 700
Denver, Colorado 80202
303.556.4500

PROJECT INFORMATION

CMFG 5710
DEMOLITION

D 5710 MINERAL
POINT ROAD
MADISON, WI

ISSUANCE AND REVISIONS

DATE	DESCRIPTION
09/23/2022	DEMOLITION PERMIT SUBMITTAL

C

KEY PLAN

B

SHEET INFORMATION

PROJECT MANAGER PK

PROJECT NUMBER 18451-100

EXISTING BUILDING
INTERIOR PHOTOS

AD102

© 2021 Epstein Uhen Architects, Inc.

1

2

3

4

5

6

7