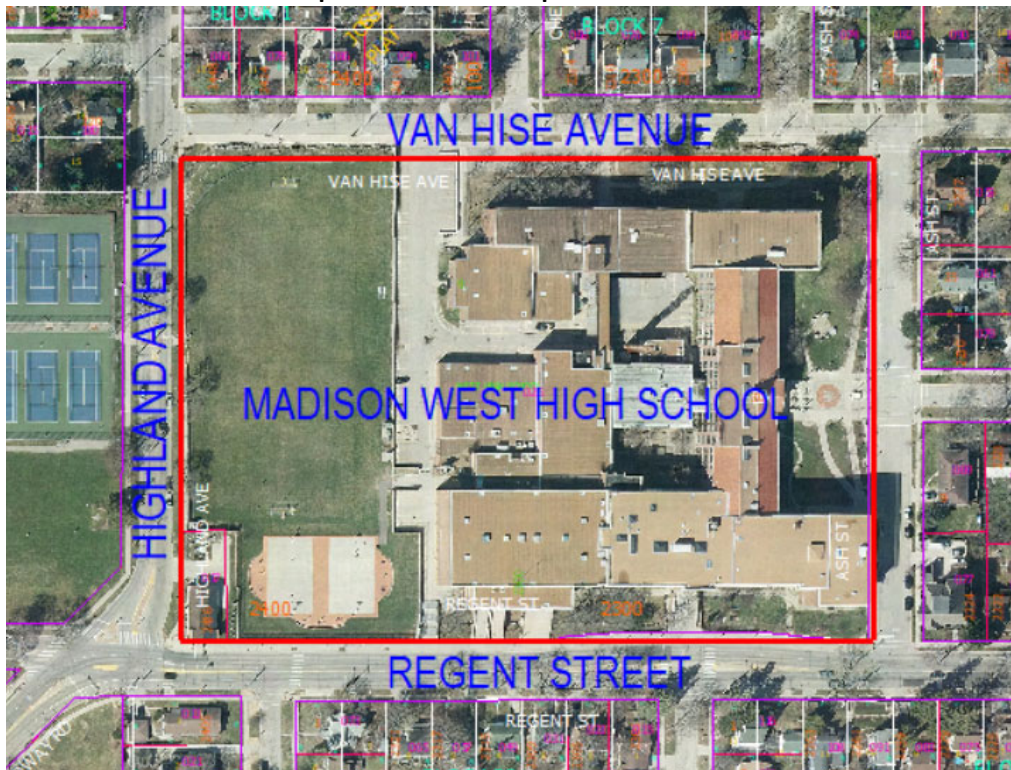


**30 Ash Street – West High School**

**Contract 9111**

**MUNIS 13880**

**Developer: Madison Metropolitan School District**



**Summary of Improvements:**

- Reconstruct sidewalk, terrace, and curb & gutter as needed for the building addition at the corner of Regent Street and Highland Avenue.
- Reconstruct sidewalk and terrace at the corner of Van Hise Avenue and Highland Avenue in coordination with the private retaining wall reconstruction.
- Install new driveway aprons and replace sidewalk as needed for the parking lot improvements on Van Hise Avenue
- Repair or replace any existing sidewalk, terrace, or curb & gutter that may be damaged from private construction activities as needed.
- Install new water service lateral on Regent Street. Cap existing water service lateral on Van Hise Avenue and replace with new water service. Complete any street restoration necessary in conjunction with the water service lateral work.
- Maintain (or replace if damaged) existing concrete bus boarding surface on Regent Street. Install new concrete bus boarding surface on the east side of Highland Avenue, north of Regent Street. Exact location to be coordinated with City Traffic Engineering.
- Protect/remove/replace existing public street terrace trees per City Forestry



MILWAUKEE 333 East Chicago Street  
 Milwaukee, Wisconsin 53202  
 414.271.5300  
 MADISON 200 West Johnson Street, Suite 202  
 Madison, Wisconsin 53703  
 608.442.5300  
 DENVER 1889 W. Hampden Street, Suite 300  
 Denver, Colorado 80202  
 303.986.4000

PROJECT INFORMATION  
**MMSD - WEST HIGH SCHOOL**

30 ASH ST,  
 MADISON, WI 53726

ISSUANCE AND REVISIONS

DATE	DESCRIPTION
08/20/21	INITIAL LOC AND PLAN COMMISSION

KEY PLAN

SHEET INFORMATION

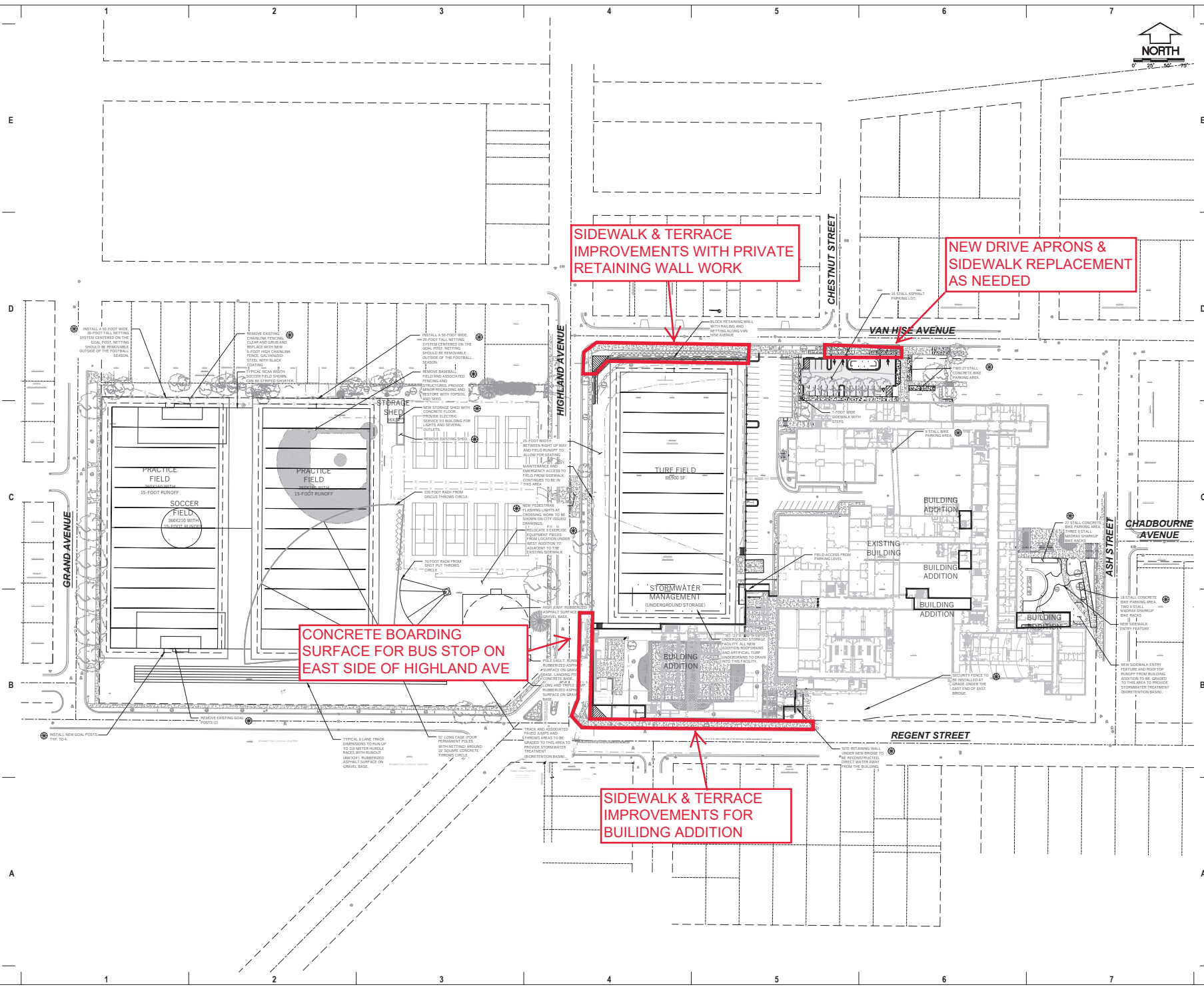
**PROGRESS DOCUMENTS NOT FOR CONSTRUCTION**  
 These documents reflect progress and intent and may be subject to change, including additional detail. These are not final construction documents and shall not be used for final bidding or construction-related purposes.

PROJECT MANAGER JM  
 PROJECT NUMBER 20535-01

SITE PLAN - OVERALL

**C100**

© 2021 Eppstein Usher Architects, Inc.



**CONSTRUCTION SITE EROSION CONTROL REQUIREMENTS**

1. POST WORK CERTIFICATE OF EROSION CONTROL AND MAINTENANCE. EROSION CONTROL MEASURES SHALL BE IN PLACE AND MAINTAINED THROUGHOUT CONSTRUCTION ACTIVITIES. THE CONTRACTOR SHALL MAINTAIN THE SITE AS STABILIZED AND A NOTICE OF TERMINATION IS FILED WITH DNR.
2. KEEP A COPY OF THE CURRENT EROSION CONTROL PLAN ON SITE THROUGHOUT THE DURATION OF THE PROJECT.
3. ENGINEER: CITY OF MADISON, WISCONSIN HAS THE RIGHT TO REQUIRE CONTRACTOR TO IMPLEMENT ADDITIONAL EROSION CONTROL MEASURES AS NECESSARY. CONTRACTOR MUST NOTIFY AND MAKE AN APPOINTMENT WITH THE CITY OF MADISON BUILDING DEPARTMENT PRIOR TO WORKING DAYS IN ADVANCE OF ANY SOIL DISTURBANCE ACTIVITIES.
4. SUBMIT PLAN REVISIONS OR AMENDMENTS TO THE OWNER AT LEAST 5 DAYS PRIOR TO EACH IMPLEMENTATION.
5. THE SITE CONTRACTOR IS RESPONSIBLE FOR ROUTINE SITE INSPECTIONS AT LEAST ONCE PER WEEK (ONCE PER WEEK) BY A MINIMUM OF ONE (1) PERSON AS DIRECTED BY THE OWNER. INSPECTION REPORTS ON SITE AND MAKE THEM AVAILABLE UPON REQUEST.
6. INSPECT AND MAINTAIN ALL INSTALLED EROSION CONTROL PRACTICES UNTIL THE CONTROLLING DRAINAGE AREA HAS BEEN STABILIZED.
7. WHEN POSSIBLE, PRESERVE EXISTING VEGETATION ESPECIALLY ADJACENT TO SLOPES OF 20% OR MORE, MINIMIZE SOIL COMPACTION, AND PRESERVE TOPSOIL.
8. REFER TO THE WISCONSIN STORMWATER CONSTRUCTION TECHNICAL STANDARDS FOR EROSION CONTROL PRACTICES.
9. INSTALL PERMITS EROSION CONTROL AND SOIL TRACKING AND CONSTRUCTION ENTRANCES PRIOR TO ANY LAND DISTURBING ACTIVITIES INCLUDING GRADING AND DRIVING. USE EROSION TECHNICAL STANDARDS TRACKING AND THE WISCONSIN EROSION CONTROL TECHNICAL STANDARDS.
10. INSTALL INLET PROTECTION PRIOR TO LAND DISTURBING ACTIVITIES IN THE CONTROLLING DRAINAGE AREA AND ON IMPROVED LOTTO INLET PROTECTION FOR CONSTRUCTION SITES PER EROSION CONTROL TECHNICAL STANDARDS. CONSTRUCTION ENTRANCES SHALL BE PROTECTED FROM INLET PROTECTION FOR CONSTRUCTION SITES PER EROSION CONTROL TECHNICAL STANDARDS.
11. CONTRACTOR TO PROVIDE SOLID LOG METAL PLATE ON ALL OPEN CHANNELS EXISTING CONSTRUCTION TO MINIMIZE SEDIMENT FROM ENTERING THE STORM SEWER SYSTEM.
12. STAGE CONSTRUCTION AND/OR ACTIVITIES TO MINIMIZE THE CUMULATIVE DISTURBED AREA. CONDUCT TEMPORARY GRADING OF EROSION CONTROL PER EROSION TECHNICAL STANDARDS TEMPORARY GRADING PRACTICES FOR EROSION CONTROL PLAN.
13. FURNISHING OF INFORMATION ON EROSION CONTROL IS THE RESPONSIBILITY OF THE CONTRACTOR. ADDITIONAL DISTURBANCES IS SUBJECT TO A ONE W/CHANGING EROSION CONTROL AND A HIGH CAPACITY WALL APPROVAL IF CALCULATED PUMP CAPACITY IS 50 GPM OR MORE.
14. PROVIDE AN EROSION PROTECTION AND MAINTENANCE RECORD FILED DURING CONSTRUCTION. PERSON RESPONSIBLE FOR ACCUMULATED SURFACE RUNOFF IS ACCORDANCE WITH EROSION TECHNICAL STANDARDS FOR EROSION CONTROL.
15. COMPLETE AND STABILIZE EROSION CONTROL PRACTICES ON NET EXPOSED PRIORITY TO MAGS AND DISTURBANCE TO CONTROL. RUNOFF DURING CONSTRUCTION. REMOVE SEDIMENT AS NECESSARY TO MAINTAIN A STATE OF DEPTH TO THE OUTLET, AND PREVENT EROSION OF SEDIMENT MOVING DURING MAINTENANCE PERIODS TO THE SOIL. CONSTRUCTION AND MAINTENANCE OF SEDIMENT TRAP (S) IS REQUIRED.
16. CONTRACTOR AND PROJECT OWNER SHALL MAINTAIN THE EROSION CONTROL PRACTICES THROUGHOUT CONSTRUCTION. REFERENCE TO EROSION TECHNICAL STANDARDS SPECIFICATIONS FOR THE EROSION CONTROL PRACTICES.
17. INSTALL AND MAINTAIN SILT FENCES FOR EROSION CONTROL STANDARDS PER EROSION TECHNICAL STANDARDS FOR EROSION CONTROL PRACTICES.
18. REPAIR BREAKS AND GAPS IN SILT FENCES AND BARRIERS IMMEDIATELY. LOCATE, INSTALL AND MAINTAIN STORM DRAIN SILENT (S) 2' MIN VERTICAL STAINLESS STEEL PROTECTIVE.
19. INSTALL AND MAINTAIN FILTER SOCKS IN ACCORDANCE WITH EROSION TECHNICAL STANDARDS FOR EROSION CONTROL PRACTICES.
20. IMMEDIATELY STABILIZE DISTURBED AND SURROUND PROPERTIES AS NECESSARY WITH EROSION CONTROL PRACTICES FOR EROSION CONTROL PRACTICES.
21. IMMEDIATELY STABILIZE ALL DISTURBED AREAS THAT WILL REMAIN INACTIVE FOR 30 DAYS OR LONGER BETWEEN SEPTEMBER 15 AND OCTOBER 15. STABILIZE WITH GRASS, TREES, AND A PERENNIAL COVER MIXED WITH PERENNIALS AND SOIL. STABILIZATION SHALL BE APPROVED BY THE REGIONAL SOIL CONSERVATION DISTRICT OF MADISON. THE APPROVAL SHALL BE OBTAINED PRIOR TO THE START OF CONSTRUCTION.
22. STABILIZE AREAS OF FINAL GRADING WITHIN 7 DAYS OF REACHING FINAL GRADE.
23. SHEET CLEAN UP ALL SOIL AND TRASH THAT MOVES OFF SITE DUE TO CONSTRUCTION ACTIVITY OR STORM EVENTS BEFORE THE END OF THE SAME DAY. THE CONTRACTOR SHALL BE RESPONSIBLE FOR CONTROLLING DUST PER WISCONSIN TECHNICAL STANDARDS FOR EROSION CONTROL PRACTICES. EROSION CONTROL PRACTICES SHALL BE MAINTAINED THROUGHOUT CONSTRUCTION. EROSION CONTROL PRACTICES SHALL BE MAINTAINED THROUGHOUT CONSTRUCTION. EROSION CONTROL PRACTICES SHALL BE MAINTAINED THROUGHOUT CONSTRUCTION.
24. THE CONTRACTOR IS RESPONSIBLE FOR CONTROLLING DUST PER WISCONSIN TECHNICAL STANDARDS FOR EROSION CONTROL PRACTICES. EROSION CONTROL PRACTICES SHALL BE MAINTAINED THROUGHOUT CONSTRUCTION. EROSION CONTROL PRACTICES SHALL BE MAINTAINED THROUGHOUT CONSTRUCTION. EROSION CONTROL PRACTICES SHALL BE MAINTAINED THROUGHOUT CONSTRUCTION.
25. PROPERLY DISPOSE OF ALL WASTE AND UNUSED BUILDING MATERIALS INCLUDING GARBAGE, DEBRIS, CLEANING WASTE, OR OTHER CONSTRUCTION MATERIALS AND DO NOT ALLOW WASTE MATERIALS TO BE CARRIED BY WIND OR WATER TO THE STREET OR ADJACENT PROPERTIES.
26. COORDINATE WITH THE AUTHORITIES WITH JURISDICTION TO UPDATE THE LAND DISTURBANCE PERMIT TO INDICATE THE ANTICIPATED ON-LINE VARIATIONS LOCATIONS FOR THE PROPOSED SOILS OF CONSTRUCTION. STABILIZED MATERIALS NEEDS TO INCLUDE PREVENT OF SEDIMENT CONTROL. MEASURES SHOULD BE TAKEN TO PREVENT THE SOILS OF CONSTRUCTION (EARTHEN BERM).
27. FOR NEW, CHANGING FLOW OR DISTURBED AREAS CONSTRUCTED, SUPPLY PROVIDE CLASS CLASS TYPE B EROSION CONTROL MATS, PERMITS INSTALL AND MAINTAIN PER EROSION TECHNICAL STANDARDS FOR EROSION CONTROL PRACTICES.
28. FOR CHANGING FLOW OR DISTURBED AREAS CONSTRUCTED, SUPPLY PROVIDE CLASS TYPE B EROSION CONTROL MATS, PERMITS INSTALL AND MAINTAIN PER EROSION TECHNICAL STANDARDS FOR EROSION CONTROL PRACTICES.
29. MAKE PROVISIONS FOR MATURING DURING THE PERIODS FOLLOWING SEEDING OR PLANTING OF DISTURBED AREAS WHEREVER MORE THAN 75% CONSIDER THE CARE OF ANY WEATHER OCCUR.
30. THE CONTRACTOR IS RESPONSIBLE FOR COMPLYING WITH ALL APPLICABLE WISCONSIN CONSTRUCTION AND WASTE MANAGEMENT PERMITS FOR THE HANDLING AND DISPOSING OF CONTAMINATED MATERIALS, SITE SPECIFIC REMEDIATION AND REUSE OF MATERIALS. THE CONTRACTOR SHALL BE RESPONSIBLE FOR OBTAINING ALL NECESSARY PERMITS AND REUSE OF MATERIALS. THE CONTRACTOR SHALL BE RESPONSIBLE FOR OBTAINING ALL NECESSARY PERMITS AND REUSE OF MATERIALS.
31. INSTALL AND MAINTAIN A CONCRETE WASHOUT BASIN PER ENR 823-11-006. CONSTRUCTION ACTIVITIES SHALL BE STOPPED IMMEDIATELY IN THE EVENT OF A RAINFALL EVENT. CONSTRUCTION ACTIVITIES SHALL BE STOPPED IMMEDIATELY IN THE EVENT OF A RAINFALL EVENT.



MILWAUKEE 333 East Chicago Street  
Milwaukee, Wisconsin 53202  
414.271.5300

MADISON 200 West Johnson Street, Suite 202  
Madison, Wisconsin 53703  
608.442.5300

DENVER 1800 W. Hampden Street, Suite 300  
Denver, Colorado 80202  
303.956.4500

PROJECT INFORMATION

**MMSD - WEST HIGH SCHOOL**

30 ASH ST,  
MADISON, WI 53726

ISSUANCE AND REVISIONS

DATE	DESCRIPTION
8/27/2021	INITIAL LOG AND PLAN COMMISSION

KEY PLAN

SHEET INFORMATION

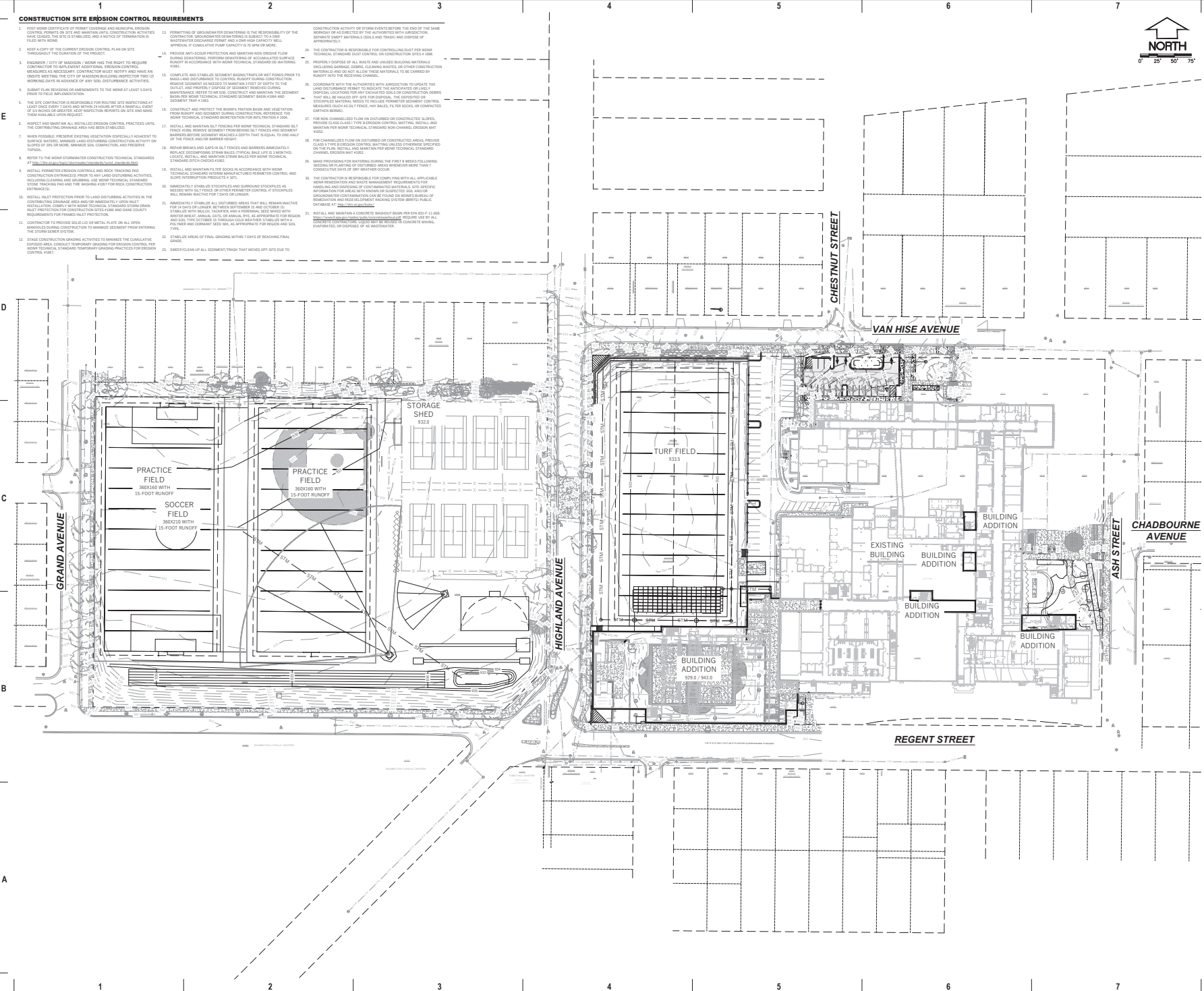
**PROGRESS DOCUMENTS NOT FOR CONSTRUCTION**

These documents reflect progress and intent and may be subject to change, including additional detail. These are not final construction documents and shall not be used for final bidding or construction-related purposes.

PROJECT MANAGER JM  
PROJECT NUMBER 20535-01

GRADING & EROSION CONTROL PLAN

**C200**





milwaukee 333 East Chicago Street  
Milwaukee, Wisconsin 53202  
414.271.5300

madison 200 West Johnson Street, Suite 202  
Madison, Wisconsin 53703  
608.442.5300

denver 1889 W. Hampden Street, Suite 300  
Denver, Colorado 80202  
303.986.4000

PROJECT INFORMATION  
**MMSD - WEST HIGH SCHOOL**

30 ASH ST  
MADISON, WI 53726

ISSUANCE AND REVISIONS

DATE	DESCRIPTION
08/20/21	INITIAL LOC AND PLAN COMMISSION

KEY PLAN

SHEET INFORMATION

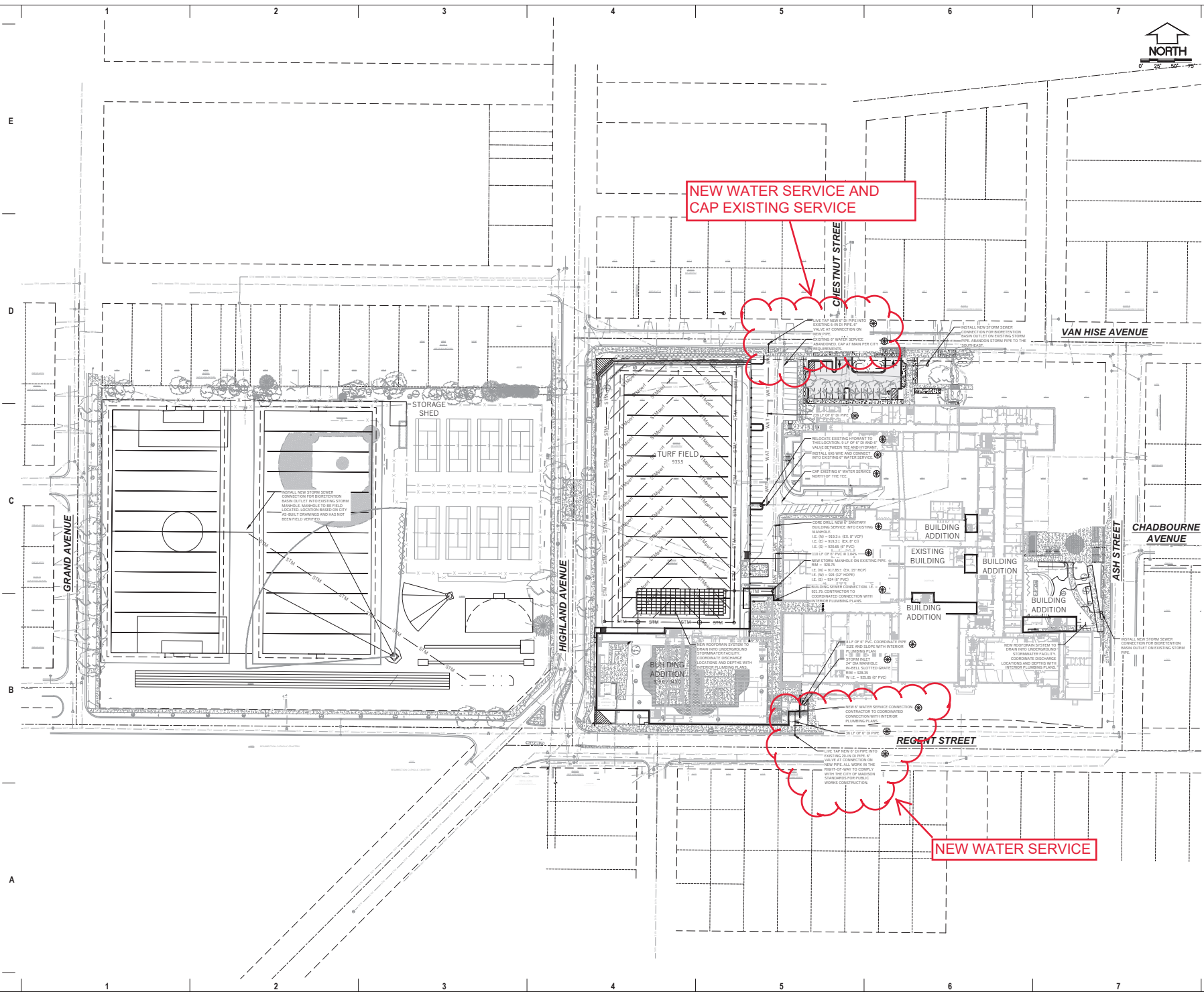
**PROGRESS DOCUMENTS NOT FOR CONSTRUCTION**

These documents reflect progress and intent and may be subject to change, including additional detail. These are not final construction documents and shall not be used for final bidding or construction-related purposes.

PROJECT MANAGER JM  
PROJECT NUMBER 20535-01

UTILITY PLAN  
**C300**

© 2021 Eppanah Urban Architects, Inc.



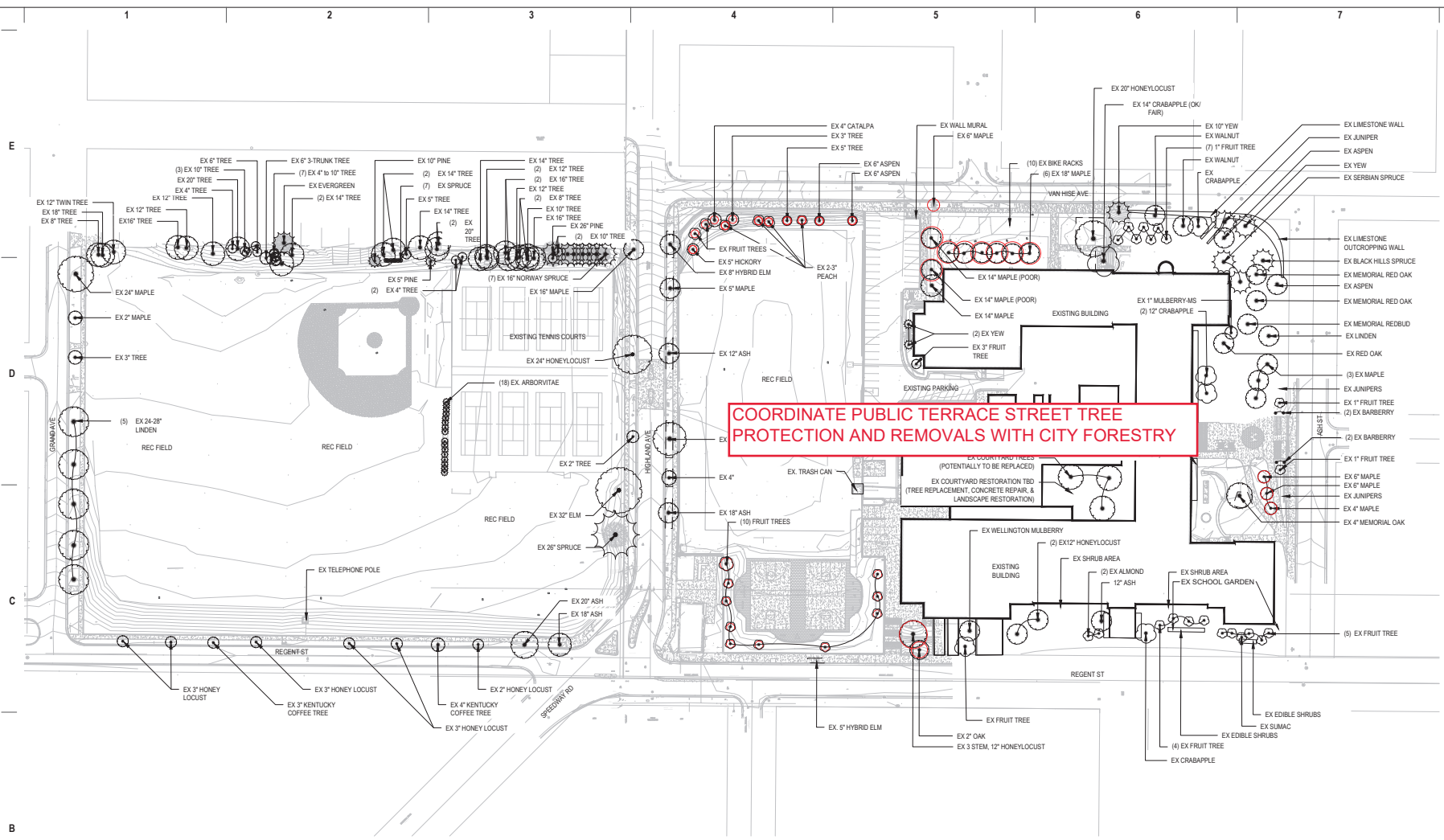
**PROJECT INFORMATION**  
**MMSD - WEST HIGH SCHOOL ADDITION & RENOVATION**

30 ASH ST.  
 MADISON, WI 53726

**ISSUANCE AND REVISIONS**

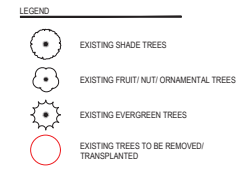
DATE	DESCRIPTION
06/01/2023	INITIAL LOC AND PLAN COMMISSION

**KEY PLAN**



**COORDINATE PUBLIC TERRACE STREET TREE PROTECTION AND REMOVALS WITH CITY FORESTRY**

- TREE PROTECTION & REMOVAL NOTES**
- All proposed street tree removals within the right of way shall be reviewed by City Forestry before the Plan Commission meeting. Street tree removals require approval and a tree removal permit issued by City Forestry. Any street tree removals requested after the development plan is approved by the Plan Commission or the Board of Public Works and City Forestry will require a minimum of a 72-hour review period which shall include the notification of the Alderperson within who's district is affected by the street tree removal(s) prior to a tree removal permit being issued.
  - Contractor shall contact City Forestry at 266-4816 to issue a street tree removal permit for (X) tree(s) (dbh) diameter (variety) tree due to (reason) at (location).
  - As defined by the Section 107.13 of City of Madison Standard Specifications for Public Works Construction: No excavation is permitted within 5 feet of the trunk of the street tree or when cutting roots over 3 inches in diameter. If excavation is necessary, the Contractor shall contact Madison City Forestry (266-4816) prior to excavation. City of Madison Forestry personnel shall assess the impact to the tree and to its root system prior to work commencing. Tree protection specifications can be found on the following website: <https://www.cityofmadison.com/business/pw-specs.cfm>
  - Contractor shall take precautions during construction to not disfigure, scar, or impair the health of any street tree. Contractor shall operate equipment in a manner as to not damage the branches of the street tree(s). This may require using smaller equipment and loading and unloading materials in a designated space away from trees on the construction site. Any damage or injury to existing street trees (either above or below ground) shall be reported immediately to City Forestry at 266-4816. Penalties and remediation shall be required.
  - Section 107.13(g) of City of Madison Standard Specifications for Public Works Construction addresses soil compaction near street trees and shall be followed by Contractor. The storage of parked vehicles, construction equipment, building materials, refuse, excavated spoils or dumping of poisonous materials on or around trees and roots within five (5) feet of the tree or within the protection zone is prohibited.
  - On this project, street tree protection zone fencing is required. The fencing shall be erected before the demolition, grading or construction begins. The fence shall include the entire width of terrace and, extend at least 5 feet on both sides of the outside edge of the tree trunk. Do not remove the fencing to allow for deliveries or equipment access through the tree protection zone.
  - Street tree pruning shall be coordinated with Madison Forestry at a minimum of two weeks prior to the start of construction for this project. All pruning shall follow the American National Standards Institute (ANSI) A300 - Part 1 Standards for pruning.
  - At least one week prior to street tree planting, Contractor shall contact City Forestry at (608) 266-4816 to schedule inspection and approval of nursery tree stock and review planting specifications with the landscape.
  - Forestry Specialist: Wayne Buckley (District 2, 4, 6, and 10)
    - Wayne Buckley
    - 608.220.0637 (Cell)
    - 608.266.4892 (Office)
    - wbuckley@cityofmadison.com



**SHEET INFORMATION**

**PROGRESS DOCUMENTS NOT FOR CONSTRUCTION**  
These documents reflect progress and shall not be used for final bidding or construction-related purposes. These documents are not to be used for construction. They are not to be used for construction. They are not to be used for construction.

PROJECT MANAGER \_\_\_\_\_  
 PROJECT NUMBER \_\_\_\_\_

**EXISTING CONDITIONS**

L100



milwaukee 333 East Chicago Street  
Milwaukee, Wisconsin 53202  
414.271.5300  
madison 303 West Johnson Street, Suite 202  
Madison, Wisconsin 53703  
608.442.1300  
denver 1809 Wynona Street, Suite 300  
Denver, Colorado 80202  
303.956.4000

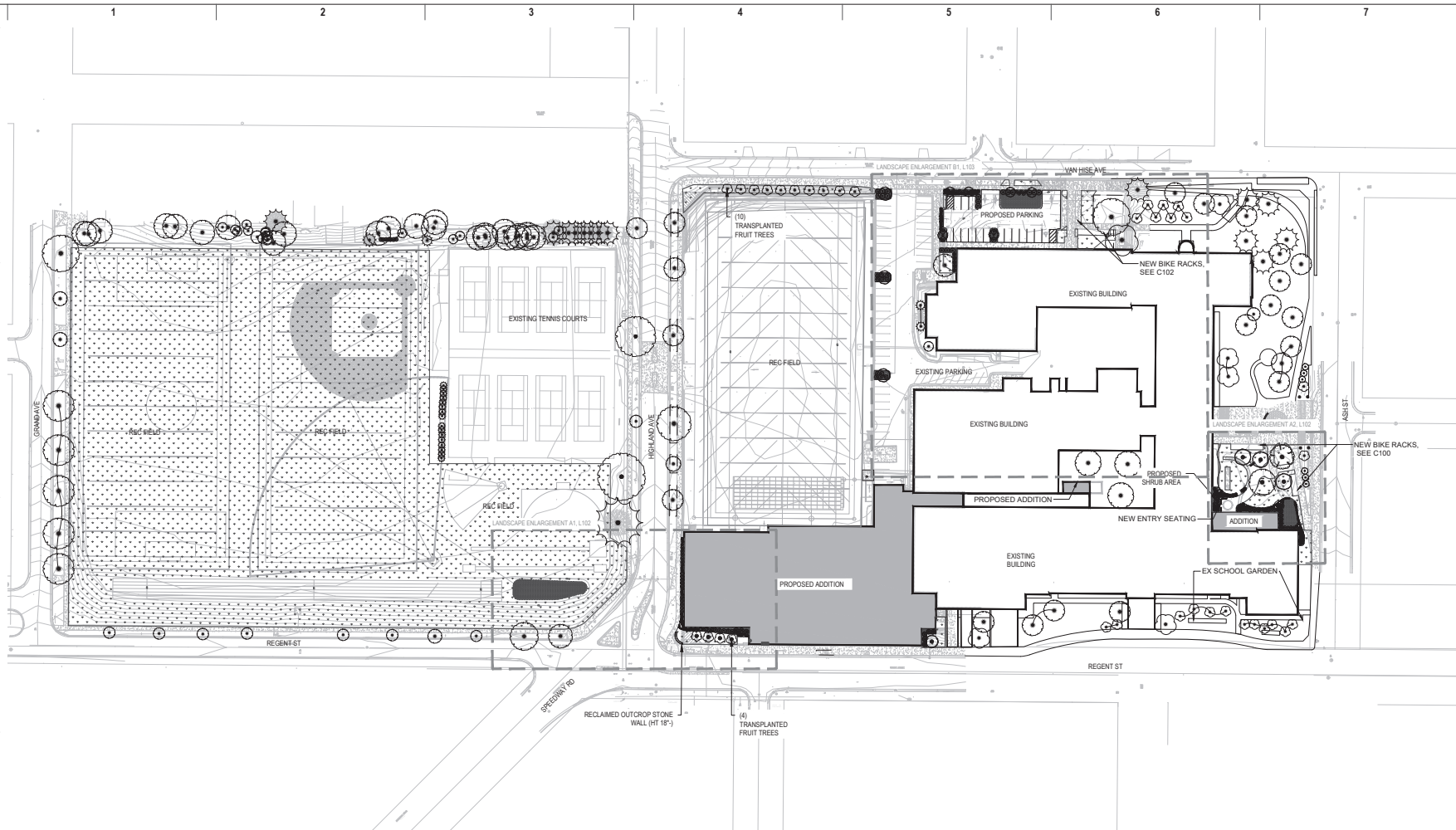
PROJECT INFORMATION  
**MMSD - WEST HIGH SCHOOL ADDITION & RENOVATION**

30 ASH ST.  
 MADISON, WI 53726

ISSUANCE AND REVISIONS

DATE	DESCRIPTION
06/01/2023	INITIAL LOC AND PLAN COMMISSION

KEY PLAN



PLANT SCHEDULE

CODE	QTY	BOTANICAL / COMMON NAME	CONT.	SIZE
<b>DECIDUOUS TREES</b>				
AF	1	Aesculus flor x glabra 'Duck Sided' / Maple Vain Buckeye	848	25"Ca
CP	2	Q. rob. occidentalis 'F'S-K-801' TM / Prairie Sentinel Common Noddy	848	27"Ca
<b>EVERGREEN TREES</b>				
JNC	4	Juniperus chinensis 'Mouraine' / Mouraine Juniper	848	5' HT. (MIN)
JCT	10	Juniperus chinensis 'Tussock' / Tussock Juniper	848	5' HT. (MIN)
<b>ORNAMENTAL TREES</b>				
ATD	3	Acer glaberrimum 'Darko' TM / Hit Wings Tatarian Maple	848	25"Ca
CC	3	Carpinus caroliniana / American Hornbeam	848	25"Ca
CM	1	Cornus mas 'Golden Glory' / Golden Glory Cornelian Cherry	848	15"Ca
HV	1	Hamelis virginiana / Common Witch Hazel	848	6"HT (MIN), MULTI-STEMMED
Ma	4	Matis x 'Admiral' / Admiral Cabbage	848	27"Ca
OV	1	Ostrya virginiana / American Hopbush	848	

LEGEND

- EXISTING SHADE TREES
- EXISTING FRUIT/NUT ORNAMENTAL TREES
- EXISTING EVERGREEN TREES
- TREE PROTECTION
- BLUEGRASS SEED
- LANDSCAPE AREA: SHREDDED HARDWOOD MULCH
- BIORETENTION PLUGS
- RECLAIMED OUTCROP STONE
- SEATING AND TRASH/REC RECEPTACLES

NOTE: PLANT SCHEDULE FOR SHRUBS, PERENNIALS, & BIORETENTION BASIN CAN BE FOUND ON L102. SEE SHEET L100 FOR TREE PROTECTION INFORMATION.

SHEET INFORMATION

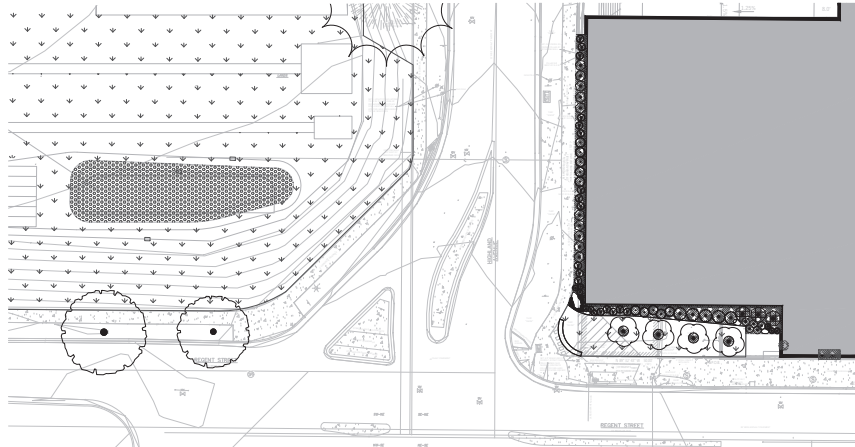
**PROGRESS DOCUMENTS NOT FOR CONSTRUCTION**  
 These documents reflect progress and shall not be used for final bidding or construction-related purposes.

PROJECT MANAGER  
 PROJECT NUMBER

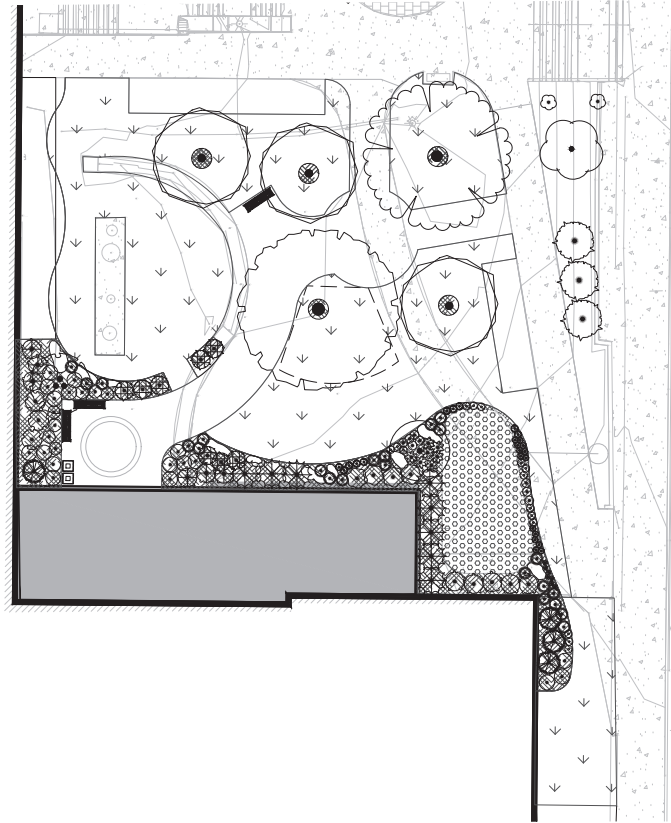
LANDSCAPE PLAN

**L101**

© 2023 Equinox Chew Architects, Inc.



**A1** LANDSCAPE ENLARGEMENT 1  
SCALE: 1" = 20'-0"



**A2** LANDSCAPE ENLARGEMENT 2  
SCALE: 1" = 10'-0"

EVERGREEN SHRUBS	CODE	QTY	BOTANICAL / COMMON NAME	CONT.
	am	11	Juniperus sabina 'Mona' / Calgary Carpet Juniper	5 gal
	jb	21	Juniperus sabina 'Blue Forest' / Blue Forest Juniper	5 gal
	trt	13	Taxus x media 'Tautou' / Tautou Yew	5 gal
ORNAMENTAL GRASSES	CODE	QTY	BOTANICAL / COMMON NAME	CONT.
	ss	14	Stipa capensis 'Smoke Signal' / Smoke Signal Little Bluestem	1 gal
	st	27	Sporobolus heterolepis 'Tear' / Prairie Droopseed	1 gal
DECIDUOUS SHRUBS	CODE	QTY	BOTANICAL / COMMON NAME	CONT.
	ai	24	Aronia melanocarpa 'Molton' / Hopyods Beauty Black Chokeberry	3 gal
	ci	5	Cornus stolonifera 'Farnow' TM / Arctic Fire Red Twig Dogwood	3 gal
	ca	3	Corylus americana / American Hazelnut	5 gal
	ci	22	Diervilla bicolor 'Michigan Sunset' / Dwarf Bush Honeylocust	3 gal
	hp	11	Hydrangea paniculata 'Little Quack Fire' / Little Quack Fire Panicle Hydrangea	5 gal
	hst	7	Hypericum kalmianum 'Newer' / Anne St. Johannis	3 gal
	fd	23	Physocarpus opulifolius 'Donna May' TM / Little Deed Ninebark	3 gal
	ru	22	Rhus aromatica 'On-Lo' / On-Lo Fragrant Sumac	3 gal
	vc	5	Viburnum cassinoides / Withered Viburnum	3 gal
	vb	3	Viburnum dentatum 'XLMiserere' TM / Little Joe Viburnum	3 gal

HERBACEOUS PERENNIALS	CODE	QTY	BOTANICAL / COMMON NAME	CONT.		
	am	16	Allium x Milburni / Milburn Ornamental Onion	1 gal		
	ab	13	Anemone x 'Blue Ice' / Blue Ice Bleeder	1 gal		
	ga	8	Galearia x carabidgeana 'Bikoke Kamini' / Bikoke Kamini Hybrid Crowfoot	1 gal		
	ga	18	Its germanica 'Armageddon' / Armageddon German Iris	1 gal		
	la	7	Malva x struthioifera / Dutch Fan	1 gal		
	nh	15	Nepeta x 'Early Bird' / Early Bird Catmint	1 gal		
GROUND COVERS	CODE	QTY	BOTANICAL / COMMON NAME	CONT.	GAL.	SPACING
		3,107	BIORETENTION BARR			
	ac	323	Allium cernuum / Nodding Onion	2" plug		10% @ 12" oc
	cp	323	Chamaecyparis 'Purple Frost' Chier	2" plug		10% @ 12" oc
	ib	323	Its versicolor / Blue Flag	2" plug		10% @ 12" oc
	lg	323	Lobelia spicata / Great Lobelia	2" plug		10% @ 12" oc
	mb	323	Monarda bicolor / Bergamot	2" plug		10% @ 12" oc
	ps	323	Psidium virginianum / Guava	2" plug		10% @ 12" oc
	ru	323	Rubus idaeus / Sweet Black-eyed Susan	2" plug		10% @ 12" oc
	sp	323	Sparganium angustifolium / Indian Grass	2" plug		10% @ 12" oc
	st	323	Sporobolus heterolepis / Prairie Droopseed	2" plug		10% @ 12" oc
	va	323	Vaccinium canadense / New England Aster	2" plug		10% @ 12" oc

**LEGEND**

- EXISTING SHADE TREES
- EXISTING FRUIT/NUT ORNAMENTAL TREES
- EXISTING EVERGREEN TREES
- TREE PROTECTION
- BLUEGRASS SEED
- LANDSCAPE AREA: SHREDDED HARDWOOD MULCH
- BIORETENTION PLUGS
- RECLAIMED OUTCROP STONE
- SEATING AND TRASH/REC RECEPTACLES

NOTE: PLANT SCHEDULE FOR TREES CAN BE FOUND ON L101. SEE SHEET L100 FOR TREE PROTECTION INFORMATION.



**milwaukee** 333 East Chicago Street  
Milwaukee, Wisconsin 53202  
414.271.5350

**madison** 303 West Johnson Street, Suite 202  
Madison, Wisconsin 53703  
608.442.1330

**denver** 1889 W. Wynona Street, Suite 300  
Denver, Colorado 80202  
303.956.4000

**PROJECT INFORMATION**  
MMSD - WEST HIGH SCHOOL ADDITION & RENOVATION

**D 30 ASH ST.**  
MADISON, WI 53726

**ISSUANCE AND REVISIONS**

DATE	DESCRIPTION
06/01/2023	INITIAL LOC AND PLAN COMMISSION

KEY PLAN



SHEET INFORMATION

**PROGRESS DOCUMENTS NOT FOR CONSTRUCTION**  
These documents reflect progress and shall not be used for final bidding or construction-related purposes.

PROJECT MANAGER  
PROJECT NUMBER

LANDSCAPE ENLARGEMENTS

**L102**