

# *"Things to do, Places to go, People to see"*

*Put blanket down  
for Concert on the  
Square @7*

*Remember:  
Strawberries  
Farmers Market  
8am!!!*



## Narrative for "Things to Do, Places to Go, People to See"

Every summer when we come back to Madison, my wife, son, and I make lists of all the things we want to do. Some things my son insists he and Grandma MUST DO (There is always a trip to the zoo to see the lions). Some things I've been doing since I was a kid growing up here and MUST DO (I can't leave until I have had too many brats), Some of them are new discoveries we hear about in our neighborhood newsletter (Vilas Park has one of the most thorough and interesting newsletters), Some of them my family, who still lives here, tells us about. It all comes down to the lists. In our studio, this list is a wall covered in sticky notes with things to do, places to go, and the people to see.

When we began developing the idea for the State Street Bus Depot, we thought about the people coming to Madison (some for the first time) to get a peak into planning our visits while getting a list of just some of the unique and wonderful aspects of Madison that make it a great place to live, work, and visit.

*Things to Do, Places to Go, People to See* is a sculpture that looks like a set of 10 giant post-it notes caught in the breeze, stuck to the building. Each note has a different event or place in and around Madison. During the day, the "writing" on the notes glows from a set of internal LED fixtures, while at night the notes themselves glow. Inside the depot, a notepad and pencil create a shared seating element for visitors.



*Things to do, Places to go, People, to See*  
State Street Campus Garage Public Art Concepts  
February 17, 2026

# LOCATION

## Things to do, places to go, people to see

24 Larger-than-life post it notes attached across the Eastern facade of the bus depot, each with a reminder of all of the different places, people, and things that make Madison special.

Inside the depot, one of the benches is replaced with a post it note pad big enough for several people to sit on while waiting for friends to arrive, their bus to leave, or inspiration to strike...

# The

1/2 Scale

4'

4'

The beehive needs exploring at the Children's Museum on Tuesday!



Detail



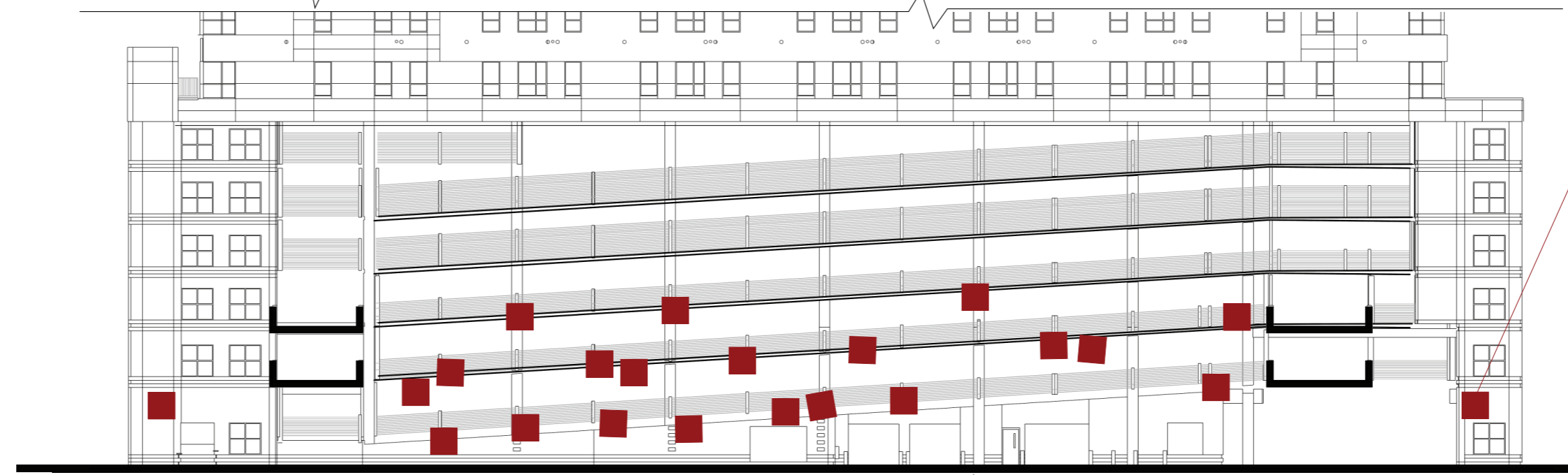
Plan



"Landing/ Seating Pad"

Lions at Vilas Zoo  
ROAR  
at dusk-  
so cool!

1 of 24 Notes



Section / Elevation



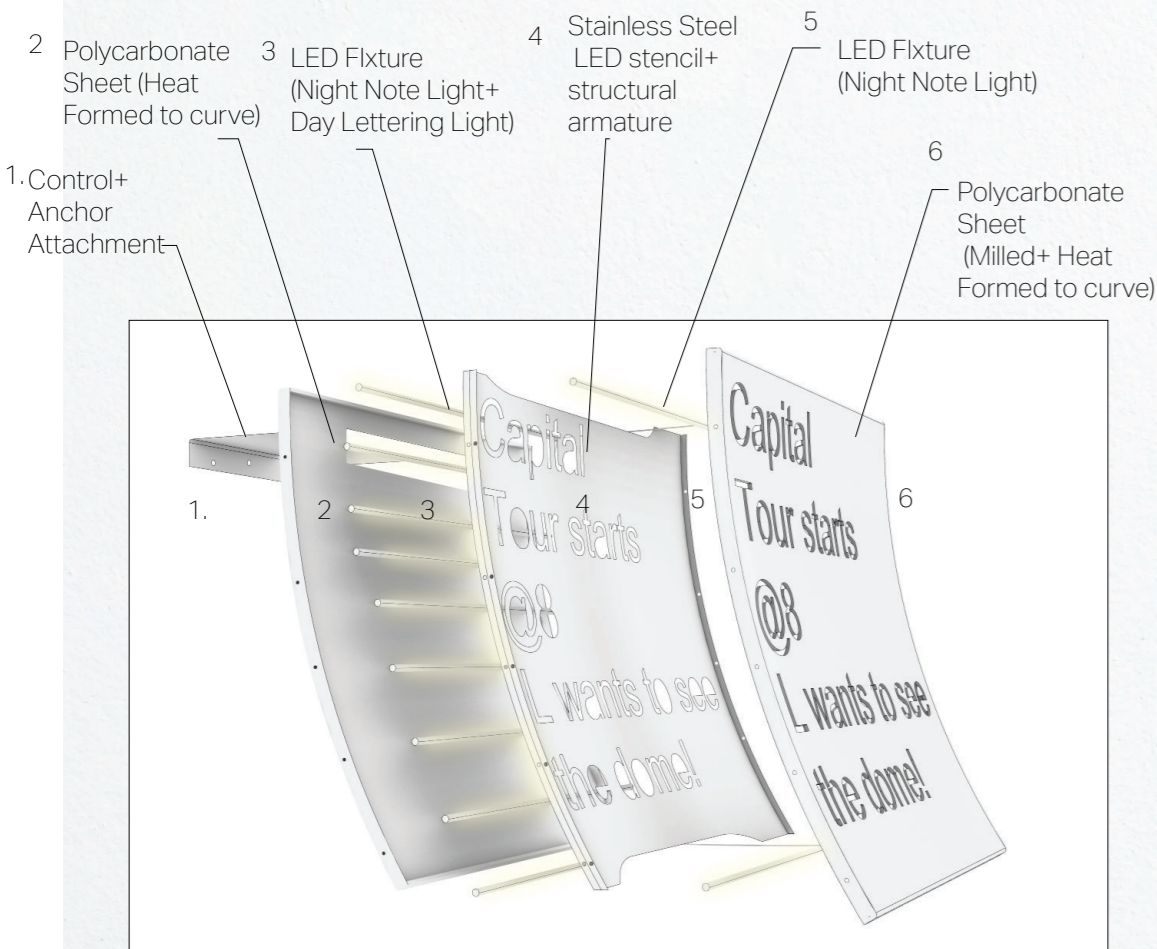
## FORMAL DIRECTION

### Things to do, places to go, people to see

24 large post-it notes, scaled to the building and attached across the building's southern facade along Hawthorne court. The notes are of the many different people, places, and things to do in Madison on any typical day, taken from actual note's stuck to the our fridge.

During the day, the letters glow, at night the note itself glows (one of three colors)

Fabrication and construction methodology:



Construction Methodology

NOTE: The "pad" is made in a similar fashion. The pen is stainless steel with a polycarbonate tip that lights up during the day (as if it writes in light)

*coffee walk  
and talk with  
L @the  
Arboretum  
5:30am*

*Capital  
Tour starts @8  
L wants to see  
the dome!*

*Remember  
Strawberries  
Farmer's  
Market  
8am!!!*

*Welcome!*

*Roses in full  
bloom at  
Olbrich  
Garden- go  
with Mom on  
Sunday*

*Take the boat  
out onto  
Lake Mendota  
today- how  
early is too  
early?*

*Put blanket  
down for  
Concert on the  
Square @7*

*Kayaking with  
Gregg, Lake  
Monona, 1pm*

*New exhibit  
at the Chazen  
to check out!*

*How many  
brats are too  
many? Let's  
find out-  
Memorial Union  
terrace tonight*

*Walk the whole  
mile down  
State Street-  
Capitol to  
Campus*

*Raspberries are  
everywhere-  
pick some for  
lunch*

*The beehive  
needs exploring  
at the  
Children's  
Museum on  
Tuesday!*

*Walk Vilas  
Park listen to  
the birds  
with Joe,  
tomorrow @10*

*Dad wants to  
go see Badgers  
@Camp  
Randall  
tonight at 5*

*Lions at  
Vilas Zoo  
ROAR  
at dusk-  
so cool!*



*The difference  
between  
stalactite and  
stalagmite- day  
trip to cave of  
the mounds  
tomorrow*

*Lesley  
wants to go to  
MMOCA-  
new  
exhibition!!*

*Art Fair on  
the Square  
July 11-13*

*APT is doing a  
Midsummer's  
Night Dream  
Can we make it  
to Spring  
Green?*

*Remember  
Strawberries,  
Farmer's  
Market  
8am!!*

*Luke wants to  
go to Cave of  
the Mounds  
again this year  
(So do I:)*

*First UW-M  
Geology mu-  
seum, then  
Burnie's Rock  
Shop*

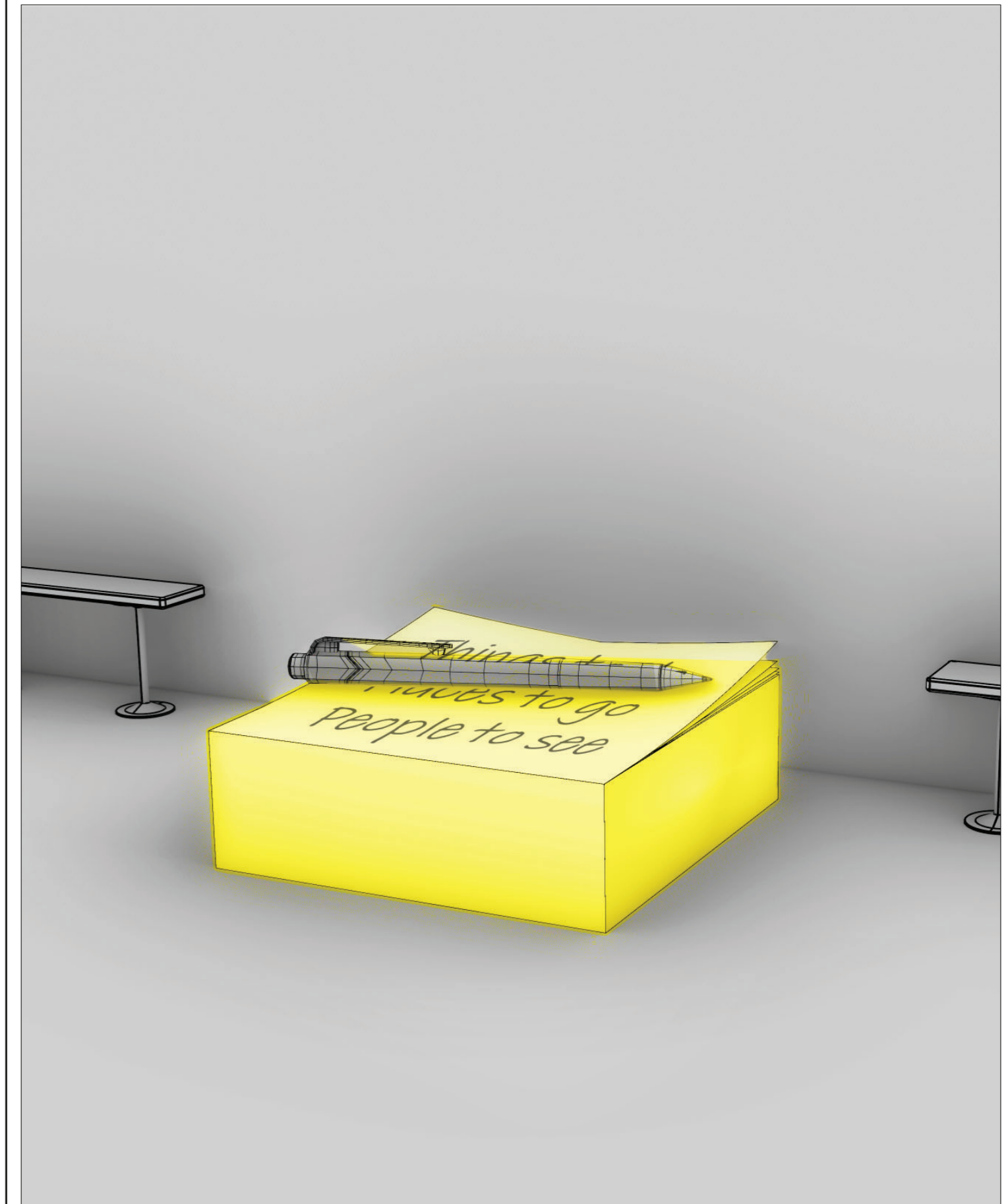
RENDERING

Things to do, places to go, people to see (day)



RENDERING

Things to do, places to go, people to see (night)



Things to do, Places to go, People, to See  
State Street Campus Garage Public Art Concepts  
February 17, 2026

## PRELIMINARY BUDGET+SCHEDULE+NARRATIVE

### NARRATIVE:

**Things to Do, Places to go, People to See** is a sculpture that imagines a day in the life of someone visiting Madison and all of the things to see, and people (family, friends, future friends) to visit visualized through the creation of a city-sized set of post-it notes that lead down and into the bus depot, culminating at the "pad" which is sized to allow people to sit on while they wait for the bus (or for the people coming off/going on). During the day, the words on each post-it note look as if they are written in light. At night, the entire post-it note lights up (and the words look like they've been written in pencil)

**Fabricated using a stainless steel armature, concrete anchors, polycarbonate sheets and IP65 rated LED fixtures.**

**The sculpture is built to withstand public interaction and Wisconsin weather. Anticipated maintenance is periodic replacement of LED fixtures (every 10 years), periodic cleaning, and yearly inspection.**

### PRELIMINARY SCULPTURE BUDGET:

- DESIGN+ENGINEERING \$32,000  
(Includes presentation, community engagement, artist fees)
- FABRICATION: \$205,000  
(includes transportation, insurance, stainless steel+polycarbonate construction, Duranar/sim paint/finish)
- LIGHTING: \$28,000  
(internally lit with LED fixtures)
- INSTALLATION: \$50,000
- CONTINGENCY: \$5,000

NOTE: permits, if necessary, are not included in preliminary budget

### PRELIMINARY SCHEDULE

- Design Development/Construction/  
Fabrication Drawings: 3-5 months
- Fabrication: 5-6 months
- Installation of footing/connection posts (1-2 days)
- Installation of Sculpture: 5 days





Jason Klimoski

## ABOUT

StudioKCA, is a diverse, multidisciplinary art and design studio based in Brooklyn, NY founded by Jason Klimoski and Lesley Chang in 2012. They are a group of architects, artists, lighting designers, and fabricators who spend their time and energy in the pursuit of building meaningful objects and experiences for public spaces and events, with the hope that visitors are inspired to explore the world and have a positive impact on it. Their work ranges in scale and complexity from large pavilions and sculptures, to information kiosks, and even table lamps and chandeliers. Working collaboratively with clients and community leaders, they create iconic pieces that respond to their site and program requirements in thoughtful and thought provoking ways. Many of their creations explore the use of materials in unconventional ways focused on nature, science, consumption, conservation, and community. Their work has been showcased in many international magazines and television programs, and has shown in 5 countries, and 3 museums. Clients are private companies, individuals, and governments and government agencies including NASA, ESA (European Space Agency), Boston Children's Hospital in Boston, MA, Canary Wharf Group in London, England, The Freyer Newman center in Denver Colorado, Patricia Reser Center for the Performing Arts in Beaverton, Oregon, the City of Bruges Belgium, the City of Kaohsiung Taiwan, the City of Ottawa, Canada; the City of New York, the City of Oklahoma City, and the City of Olathe Kansas.

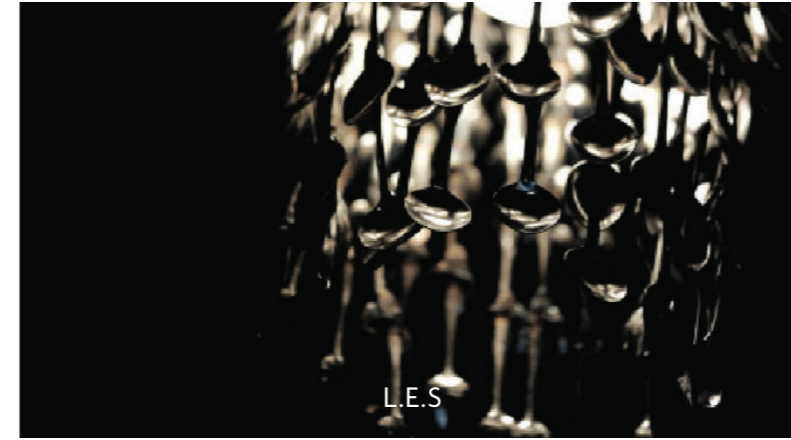
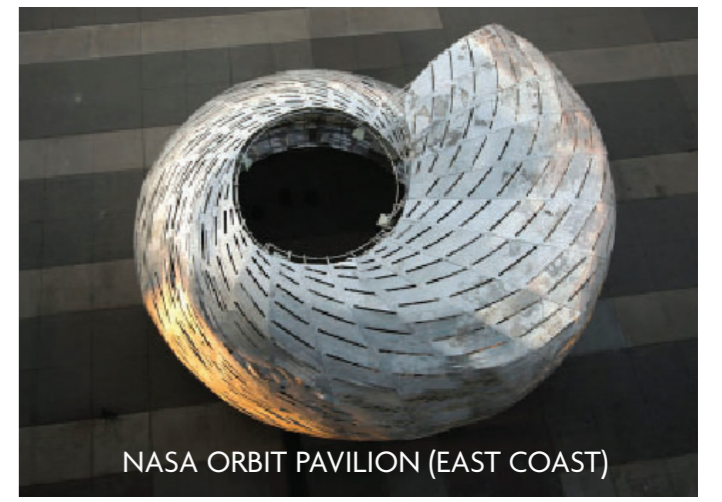
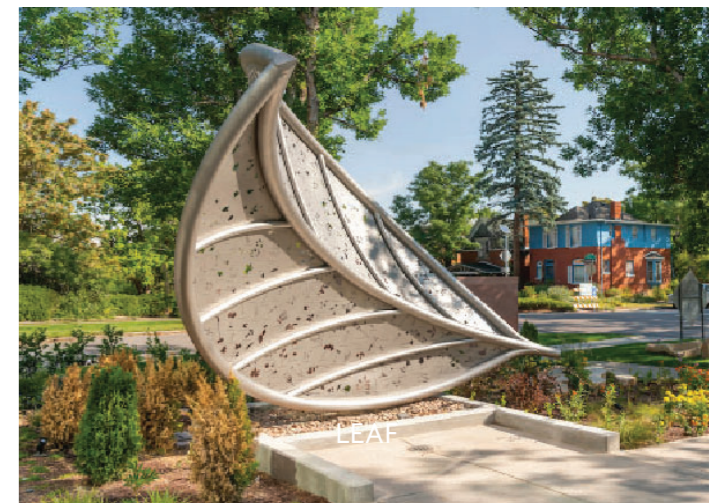
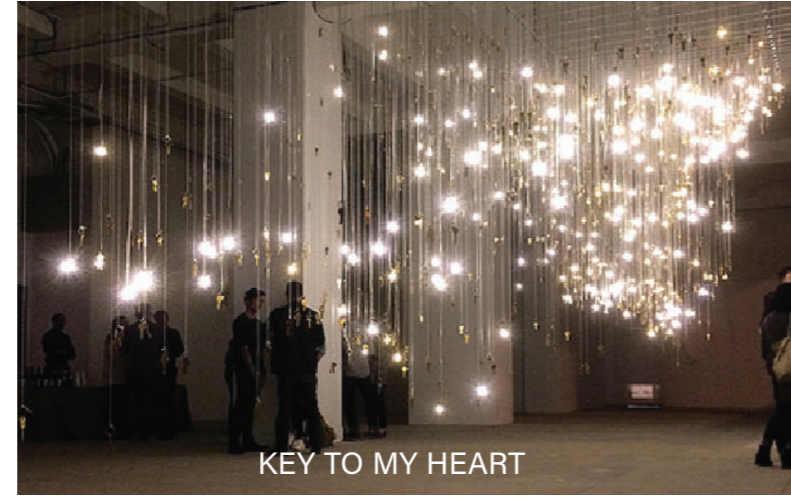
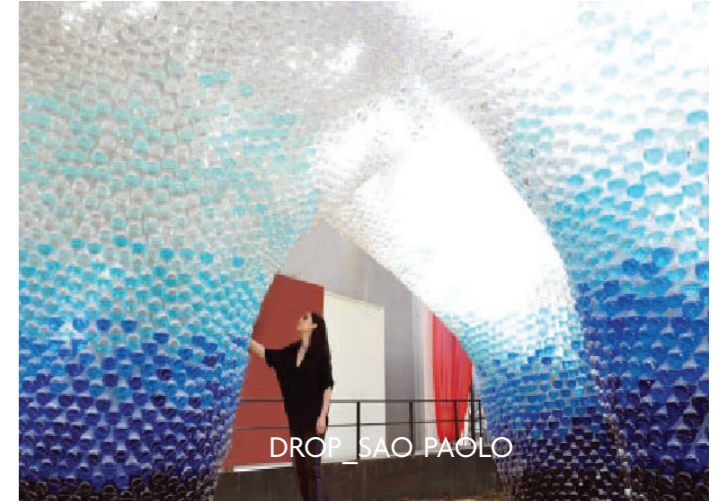


Lesley Chang

## SELECT COMMISSIONED PUBLIC ART

"Tomorrow Today", Ramapo, New Jersey (2026), "Interstellar Influencer (make an impact)" Alexandria, Virginia (2025); "Whale on the Wharf", Canary Wharf, London (2025); 'First Impressions', Town Branch Park, Lexington, KY (2025); "Star", Boston, MA (2025-Forthcoming); "Forest Stories", Burlington, VT (2025-Forthcoming); "Vanier Gateway" Ottawa, Canada (2024) "Upon Reflection", Toledo, Ohio (2023); 'Taking Flight', City of Oklahoma City, OK; (2022); Whale in Love, Kaohsiung, Taiwan (2020); 'Leaf', Denver Botanic Gardens Freyer-Newman Center, City of Denver, CO (2020); 'SEED', City of Olathe, KS (2019); 'Night and Day', City of Hopkins, MN (2018); 'Skyscraper (the Bruges Whale)', City of Bruges, Belgium (2018); 'NASA Orbit Pavilion', The Huntington Library, Art Collection, and Botanical Gardens, San Marino, CA (2016); 'Firefly', The Gray Hotel, Chicago, IL, 'NASA Orbit Pavilion', Intrepid Sea, Air and Space Museum, New York, NY (2015); 'NASA Orbit Pavilion', New York University, New York, NY (2015); 'Metamorphosis', The Exploratorium Museum, San Francisco, CA (2015); 'Key to My Heart', 120 Wall Street, New York, NY (2014); 'A Comet Lands in Brooklyn (Rosetta)', Brooklyn Bridge Park, Brooklyn, NY (2014); 'Drop', Jockey Club, Sao Paulo, Brazil (2014); 'Head in the Clouds', Governors Island, New York, NY (2013).

*Link to digital portfolio: [www.studiokca.com](http://www.studiokca.com)*



THE BRUGES WHALE

NASA ORBIT PAVILION (WEST COAST)

RIBBON

DROP - SAO PAULO

KEY TO MY HEART

SEED

UPON REFLECTION

FLAT

INTERSTELLAR INFLUENCER

LIGHT AS A FEATHER

A COMET LANDS IN BROOKLYN

NASA ORBIT PAVILION (EAST COAST)

EVERY CLOUD

L.E.S

ISOBEL IN THE GARDEN

Tomorrow Today

FIREFLY

Things to do, Places to go, People, to See  
State Street Campus Garage Public Art Concepts  
February 17, 2026

**STUDIOKCA**  
Studio Klimoski Chang