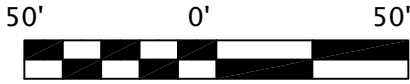
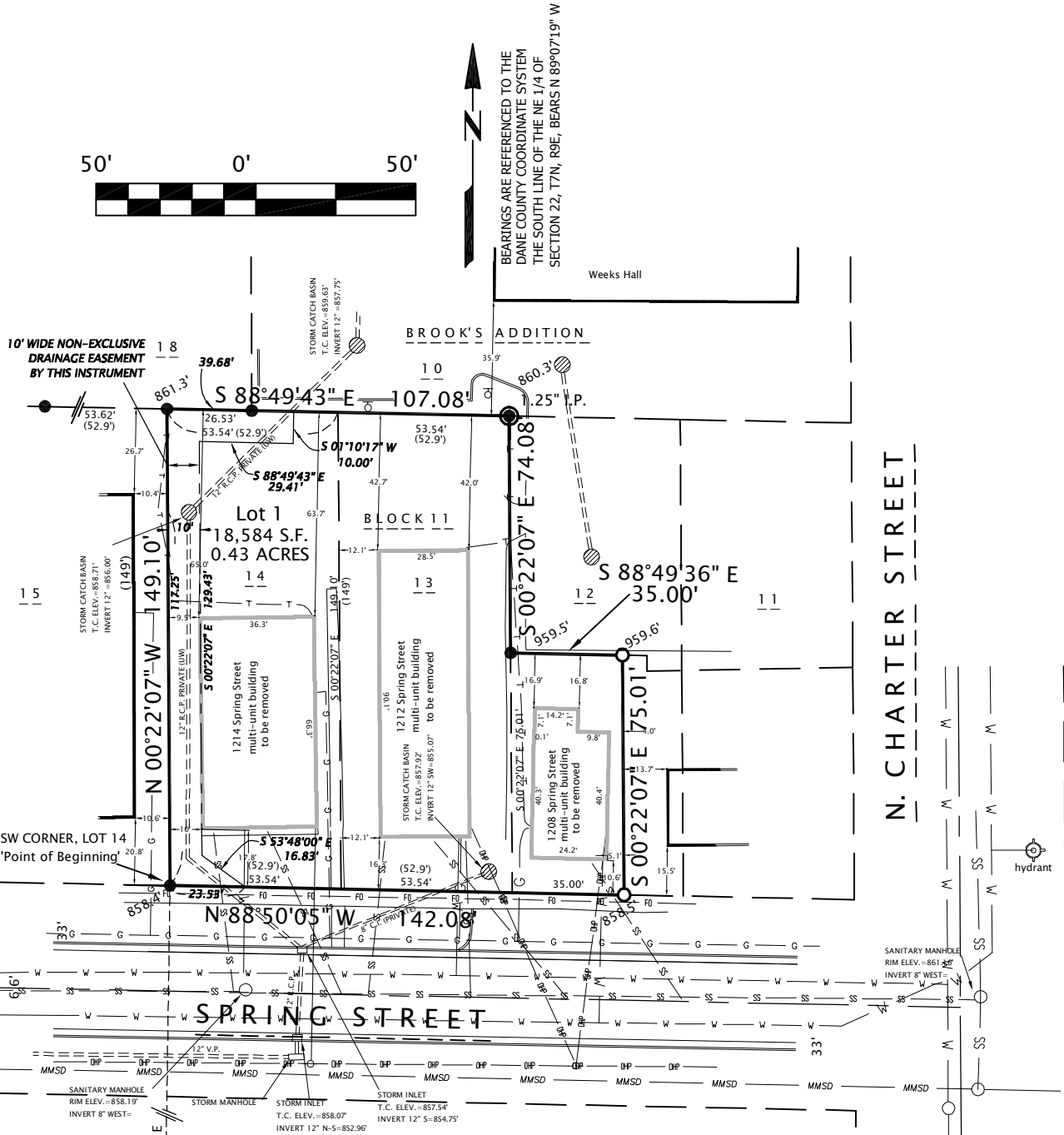


CERTIFIED SURVEY MAP

LOTS THIRTEEN (13), FOURTEEN (14) AND PART OF LOT TWELVE (12), BLOCK 11,
BROOK'S ADDITION TO MADISON, IN THE SE 1/4 OF THE NE 1/4 OF SECTION 22, T7N, R9E, IN THE CITY OF
MADISON, DANE COUNTY, WISCONSIN



BEARINGS ARE REFERENCED TO THE
DANE COUNTY COORDINATE SYSTEM
THE SOUTH LINE OF THE NE 1/4 OF
SECTION 22, T7N, R9E, BEARS N 89°07'19" W



- FOUND IRON PIPE
- FOUND 3/4" x 18" SOLID IRON ROD
- 3/4" x 18" SOLID IRON ROD SET, WT. 1.50 lbs./ft.
- FOUND CITY OF MADISON MONUMENT WITH BRASS CAP
- LOT CORNER ELEVATION (NAVD '88)
- DISTANCES ARE MEASURED TO THE NEAREST HUNDREDTH OF A FOOT.

- UNDERGROUND STORM WATER FACILITIES
- W W W WATER MAIN
- SS SS SS SANITARY SEWER
- OP OP OP OVERHEAD LINES (POWER, CABLE & TELEPHONE)
- T T T UNDERGROUND TELECOMMUNICATIONS
- G G G UNDERGROUND GAS
- MMSD INTERCEPTOR SANITARY SEWER
- FO FO FO UNDERGROUND FIBER OPTIC CONDUIT
- HYDRANT
- UTILITY POLE
- LIGHT POLE

CENTER OF SEC. 22, T7N, R9E
N:480,324.721
E:813,216.540
WCCS Dane Zone 1991

696.82'
N 89°07'19" W 2635.15'

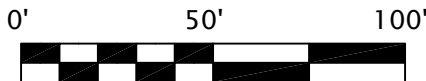
south line-SE 1/4 of the NE 1/4
as monumented

EAST 1/4 CORNER
SEC. 22, T7N, R9E
N:480,284.340
E:815,851.380
WCCS Dane Zone 1991

DRAINAGE PER APPROVED PUD (SEE Pg. 2)

UTILITY EASEMENTS AS HEREIN SET FORTH ARE FOR THE USE OF PUBLIC BODIES AND PRIVATE PUBLIC UTILITIES HAVING THE RIGHT TO SERVE THE AREA.

ELEVATIONS ARE BASED ON NAVD 88 DATUM THE MONUMENT AT THE EAST OF SEC. 22 IS ASSUMED TO BE ELEVATION=850.60'



MAP NO. _____
DOCUMENT NO. _____
VOLUME _____ PAGE _____

SURVEYED FOR:
CAPITOL SPRING, LLC
914 WEST SHORE DRIVE
MADISON, WI 53715

SURVEYED BY:
ISTHMUS SURVEYING, LLC
450 N. BALDWIN STREET
MADISON, WI 53703
(608) 244.1090
www.isthmussurveying.com