

**APPLICATION FOR  
URBAN DESIGN COMMISSION  
REVIEW AND APPROVAL**

**AGENDA ITEM #** \_\_\_\_\_  
**Project #** \_\_\_\_\_

DATE SUBMITTED: <u>10-31-07</u>	<b>Action Requested</b>
UDC MEETING DATE: <u>11-07-07</u>	<input type="checkbox"/> Informational Presentation
	<input checked="" type="checkbox"/> Initial Approval and/or Recommendation
	<input checked="" type="checkbox"/> Final Approval and/or Recommendation

PROJECT ADDRESS: 702 N. MIDWAY BLVD MADISON, WI  
ALDERMANIC DISTRICT: 11 HIGHLAND REDEVELOPMENT

OWNER/DEVELOPER (Partners and/or Principals) ARCHITECT/DESIGNER/OR AGENT:  
Joseph Thud & Associates  
220 N Smith Street Suite 300  
Palatine, IL 60067

CONTACT PERSON: Adam Pink  
Address: 220 N. Smith St. Suite 300  
Palatine, IL 60067  
Phone: 847-215-3345  
Fax: \_\_\_\_\_  
E-mail address: apink@jthud.com

**TYPE OF PROJECT:**  
(See Section A for:)

- Planned Unit Development (PUD)
  - General Development Plan (GDP)
  - Specific Implementation Plan (SIP)
- Planned Community Development (PCD)
  - General Development Plan (GDP)
  - Specific Implementation Plan (SIP)
- Planned Residential Development (PRD)
- New Construction or Exterior Remodeling in an Urban Design District \* (A public hearing is required as well as a fee)
- School, Public Building or Space (Fee may be required)
- New Construction or Addition to or Remodeling of a Retail, Hotel or Motel Building Exceeding 40,000 Sq. Ft.
- Planned Commercial Site

(See Section B for:)

- New Construction or Exterior Remodeling in C4 District (Fee required)

(See Section C for:)

- R.P.S.M. Parking Variance (Fee required)

(See Section D for:)

- Comprehensive Design Review\* (Fee required)
- Street Graphics Variance\* (Fee required)
- Other \_\_\_\_\_

\*Public Hearing Required (Submission Deadline 3 Weeks in Advance of Meeting Date)

Where fees are required (as noted above) they apply with the first submittal for either initial or final approval of a project.

### MLB700A

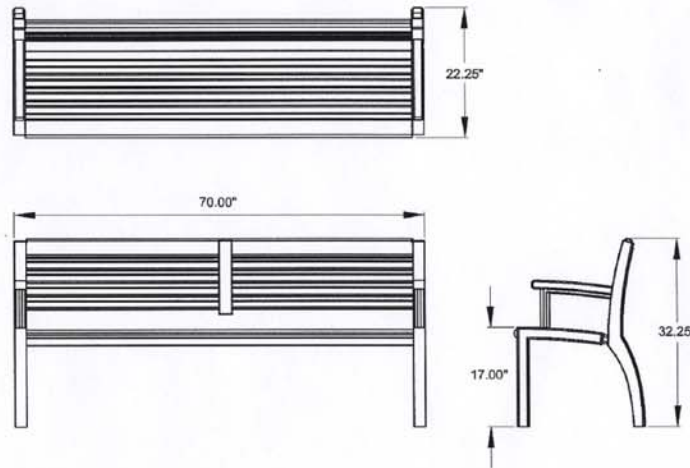
**MATERIALS:** Bench ends are made from solid cast aluminium. The seat employs 1.38" x 1.5" and 1.38" x 4.00" Ipe slats.

**DIMENSIONS:** Height: 32.25"  
Length: 70.00"  
Depth: 22.25"  
Seat: 17.00"

**WEIGHT:** 130lbs (60kg.)

**FINISH:** The Maglin Powder Paint System provides a durable finish on all metal surfaces.

**INSTALLATION:** The bench is delivered pre-assembled. Holes (0.5") are provided in each foot for securing to base.



Bench Seating

### MLWR700

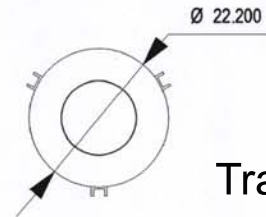
**MATERIALS:** The trash container frame is constructed using heavy duty steel and aluminum. A 32 gallon commercial grade plastic liner and metal lid are provided.

**DIMENSIONS:** Height: 38.00"  
Diameter: 29.00"

**WEIGHT :** 190lbs (86kg.)

**FINISH:** All steel components are protected with E-Coat rust proofing. The Maglin Powder Paint System provides a durable finish on all metal surfaces.

**INSTALLATION:** The trash container is delivered pre-assembled. Holes (0.5") are provided in each foot for securing to base.



Trash Receptacles



Light Fixtures

### MBR200

**MATERIALS:** The bike rack is constructed using galvanized H.S.S. steel tube and an aluminum casting. Custom raised letter is available.

**DIMENSIONS:** Height: 36.00"  
Diameter: 16.75"

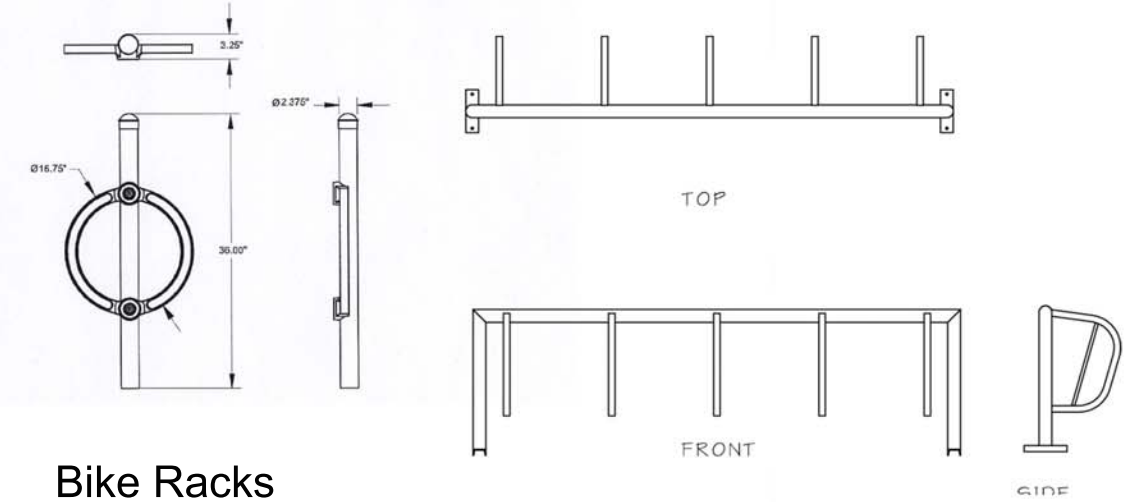
**WEIGHT:** 16lbs (7kg.)

**FINISH:** The bike rack uses a galvanized post with a natural finish on the aluminum ring casting. The Maglin Powder Paint finish is available as an option.

**INSTALLATION:** The bike rack is delivered pre-assembled. It is available with either a surface mount or direct burial installation option.



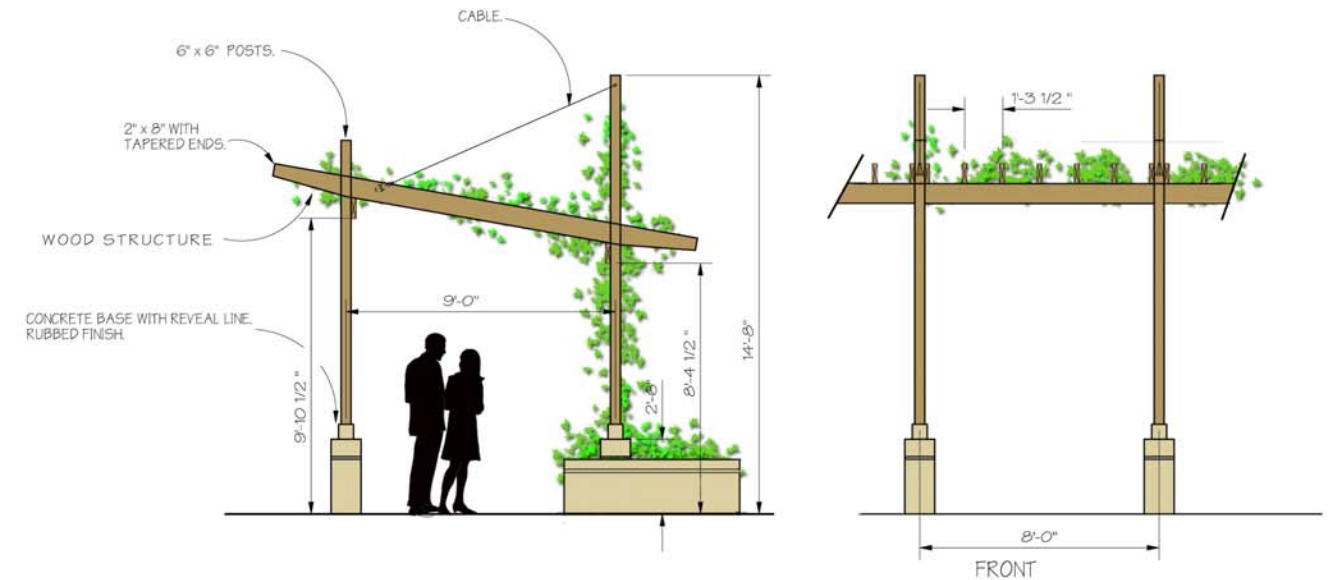
\*Fixed installation model shown.



Bike Racks



Planters, 3' dia. round



Plaza Pergola

## Site Amenities Proposed Hildale Development - Madison, WI

**Retail  
Unit P**

Service  
Trans

**Hotel Lobby  
Below Ramp**

**Prop**

**Hotel Lobby**

**Stairs**

**Extensive Green Roof**

**Upper  
Plaza Level**

**Raised Drive**

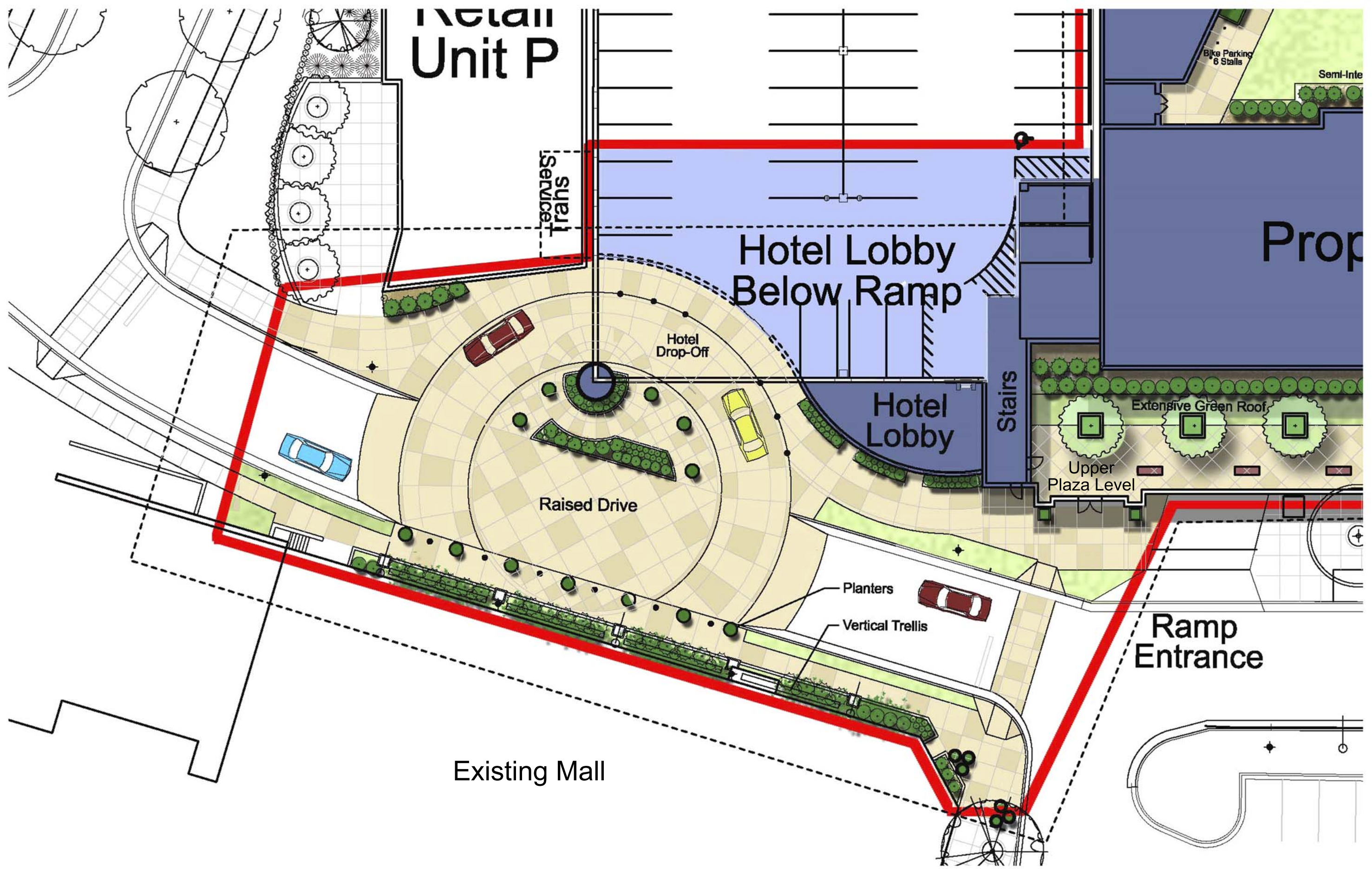
**Hotel  
Drop-Off**

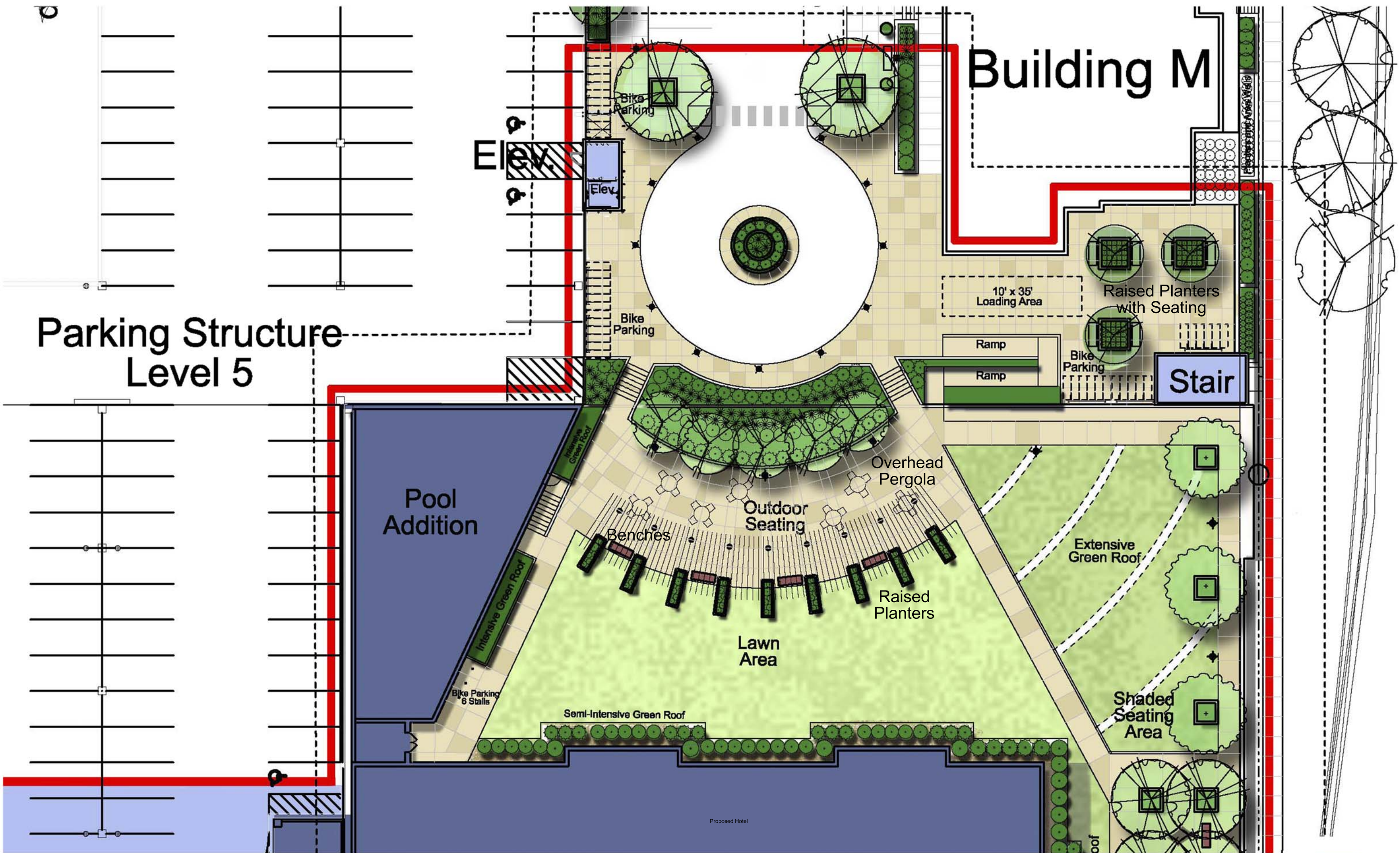
**Planters**

**Vertical Trellis**

**Ramp  
Entrance**

**Existing Mall**





Parking Structure  
Level 5

Building M

Pool  
Addition

Lawn  
Area

Outdoor  
Seating

Raised  
Planters

Extensive  
Green Roof

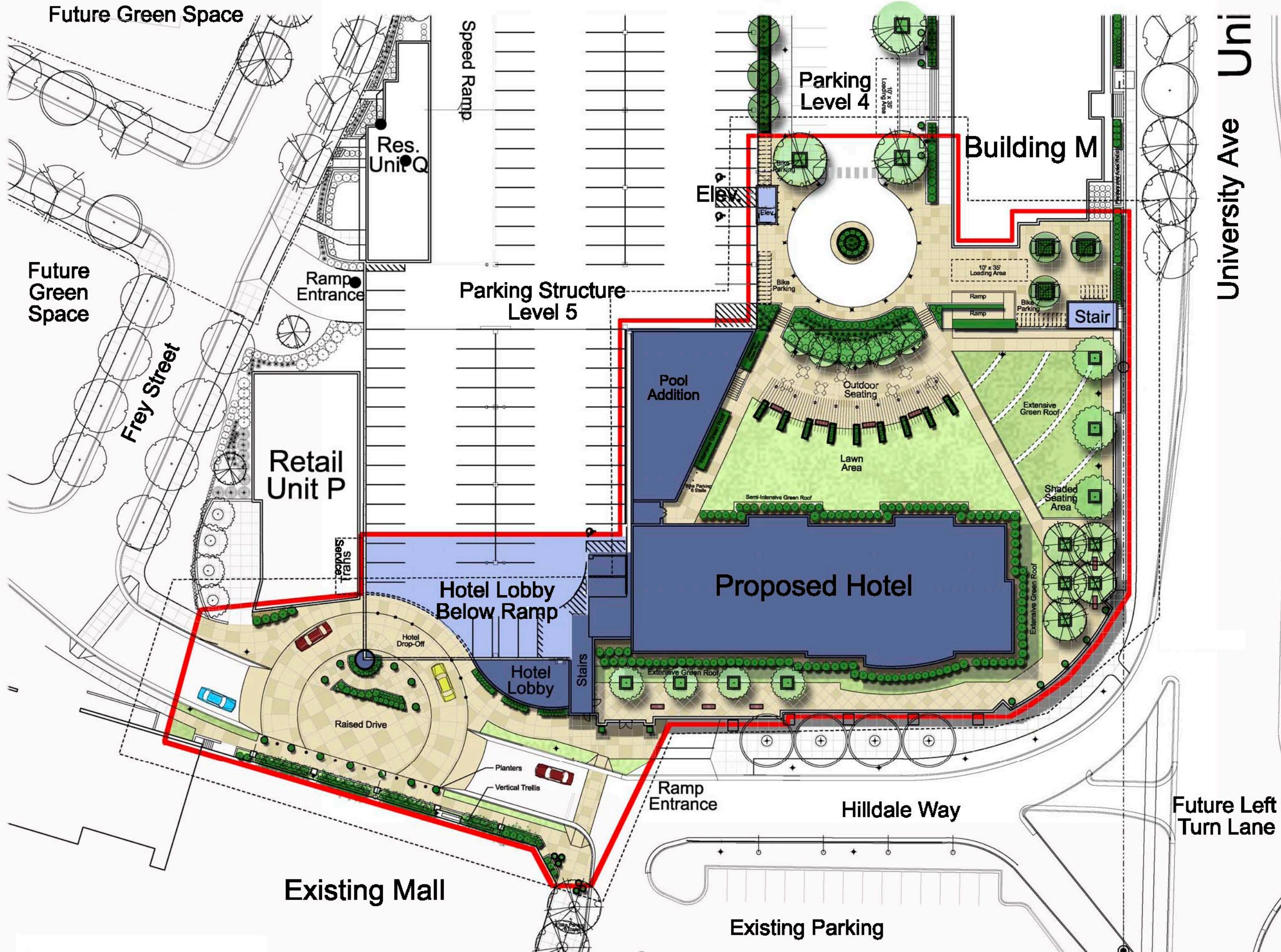
Shaded  
Seating  
Area

Stair

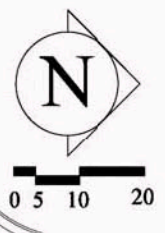
10' x 35'  
Loading Area

Plaza Level

Proposed Hilldale Development - Madison, WI



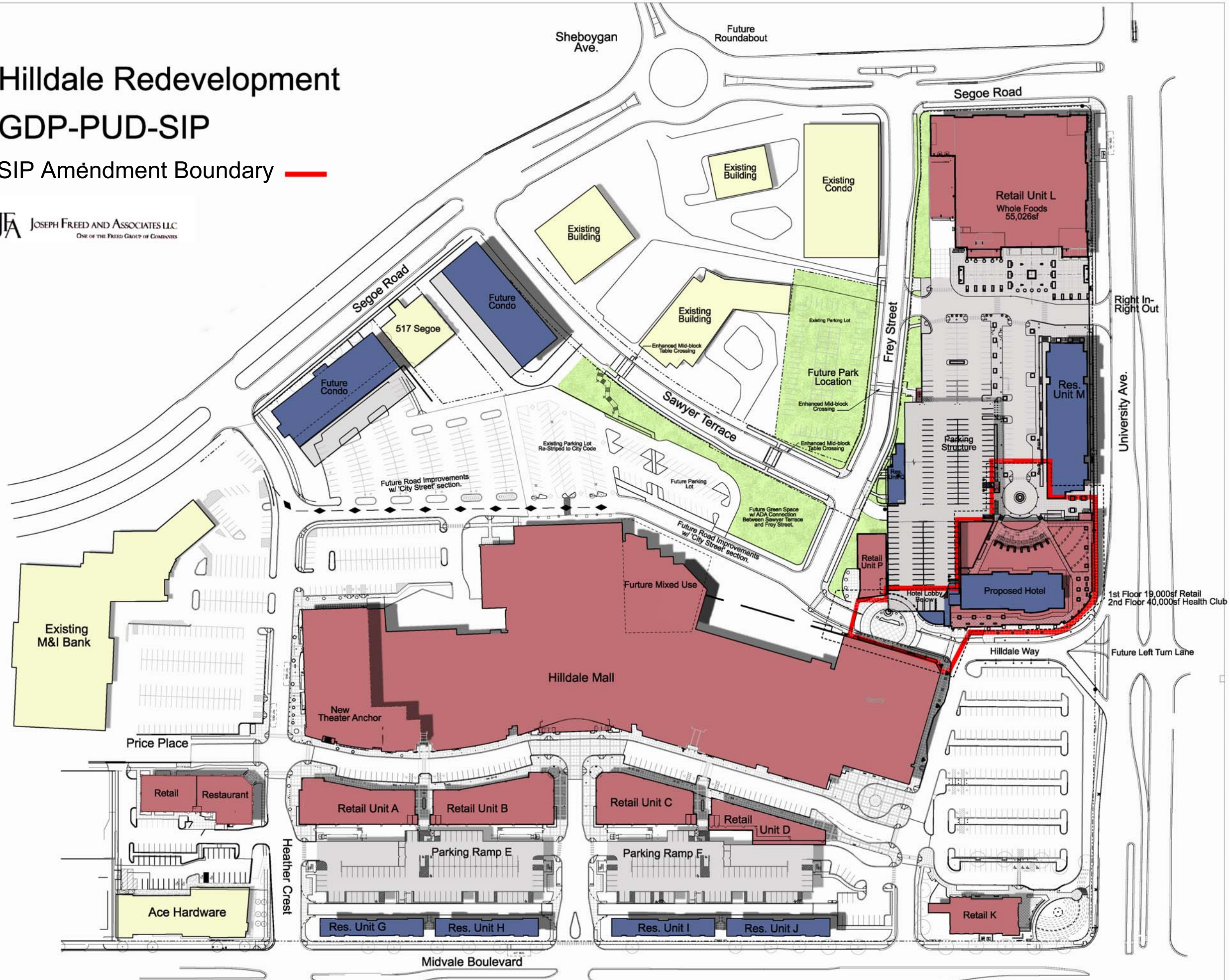
University Ave Uni



# Hilldale Redevelopment GDP-PUD-SIP

SIP Amendment Boundary —

**JFA** JOSEPH FREED AND ASSOCIATES LLC  
ONE OF THE FREED GROUP OF COMPANIES



**KEN SAIKI**  
DESIGN INC  
LANDSCAPE ARCHITECTS  
303 S. PATTERSON  
SUITE ONE  
MADISON, WI 53703  
Phone: 608.251.3600  
Fax: 608.251.9330  
www.ksd-la.com

**HILLDALE SHOPPING CENTER**  
702 N. MIDVALE BOULEVARD  
MADISON, WI  
HILLDALE LAND COMPANY LLC

Sheet Title:  
Master Plan  
GDP Amendment

Revisions:	No.	Date	Description	By

Project Number:      Drawn By:  
   MS  
Date Issued:            Reviewed By:  
   KS

Sheet Number:  
**S/C 100**

Match Line

# Hilldale Redevelopment Planting Plan (East)

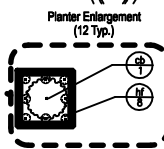
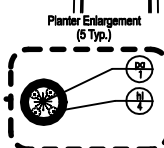
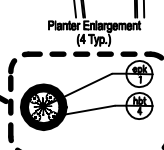
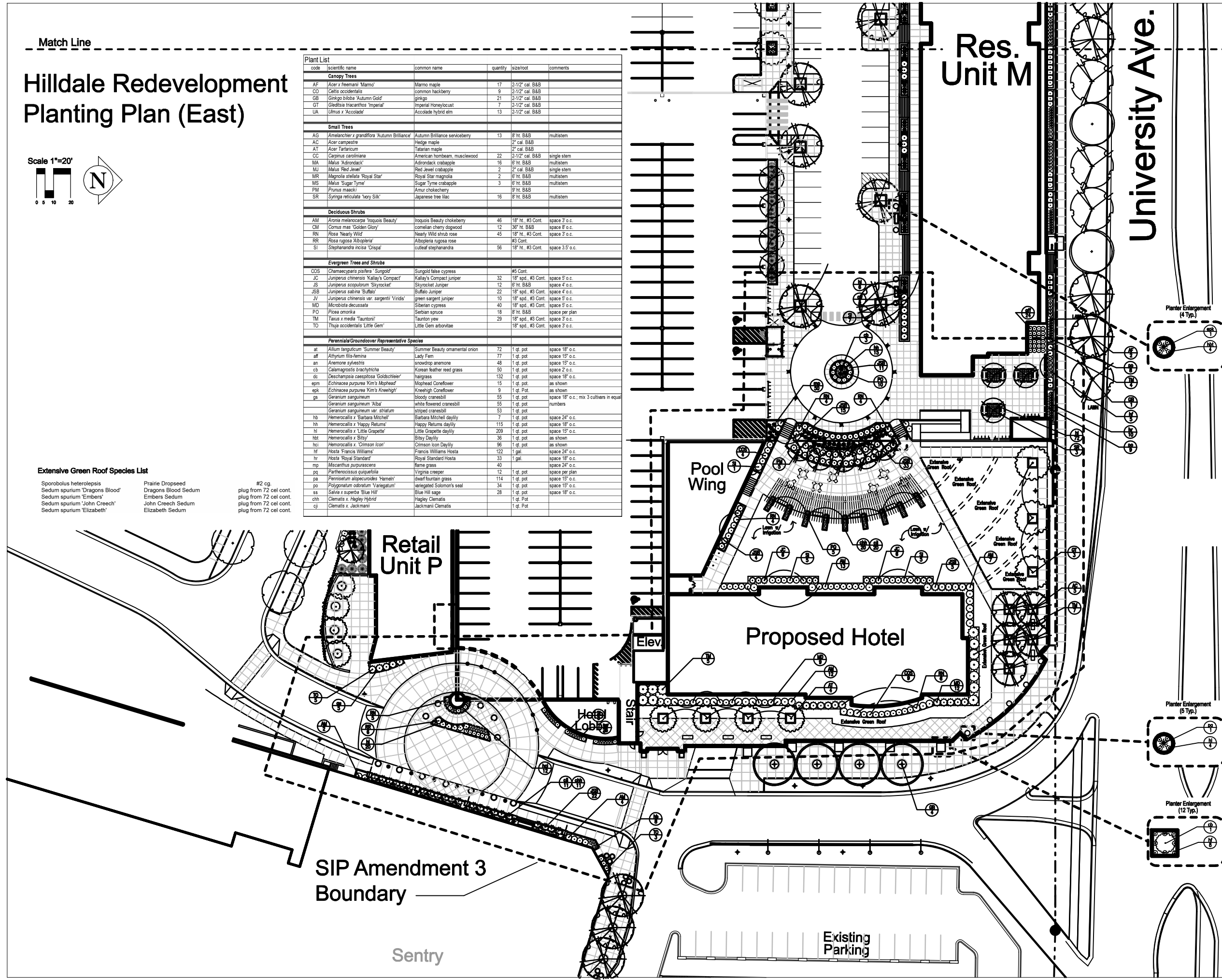
Scale 1"=20'



code	scientific name	common name	quantity	size/foot	comments
<b>Canopy Trees</b>					
AF	Acer x freemanii 'Marmo'	Marmo maple	17	2-1/2' cal. B&B	
OO	Celtis occidentalis	common hackberry	9	2' cal. B&B	
GB	Ginkgo biloba 'Autumn Gold'	ginkgo	21	2-1/2' cal. B&B	
GT	Gleditsia inacanthos 'Imperial'	Imperial Honeylocust	7	2-1/2' cal. B&B	
UA	Ulmus x 'Accolade'	Accolade hybrid elm	13	2-1/2' cal. B&B	
<b>Small Trees</b>					
AG	Amelanchier x grandiflora 'Autumn Brilliance'	Autumn Brilliance serviceberry	13	8' ht. B&B	multistem
AC	Acer campestre	Hedge maple	2	2' cal. B&B	
AT	Acer Tartaricum	Tatarian maple	2	2' cal. B&B	
CC	Carpinus caroliniana	American hophornbeam, muscledwood	22	2-1/2' cal. B&B	single stem
MA	Malus 'Adirondack'	Adirondack crabapple	16	6' ht. B&B	multistem
MJ	Malus 'Red Jewel'	Red Jewel crabapple	2	2' cal. B&B	single stem
MR	Magnolia stellata 'Royal Star'	Royal Star magnolia	2	6' ht. B&B	multistem
MS	Malus 'Sugar Tyme'	Sugar Tyme crabapple	3	6' ht. B&B	multistem
PM	Prunus masonii	Amur chokecherry	3	9' ht. B&B	multistem
SR	Syringa reticulata 'Ivory Silk'	Japanese tree lilac	16	6' ht. B&B	multistem
<b>Deciduous Shrubs</b>					
AM	Aronia melanocarpa 'Iroquois Beauty'	Iroquois Beauty chokeberry	46	18" ht., #3 Cont.	space 3' o.c.
CM	Cornus mas 'Golden Glory'	cornelian cherry dogwood	12	36" ht. B&B	space 8' o.c.
RN	Rosa 'Nearly Wild'	Nearly Wild shrub rose	45	18" ht., #3 Cont.	space 3' o.c.
RR	Rosa rugosa 'Alboplena'	Alboplena rugosa rose	#3 Cont.		
SI	Stephanandra incisa 'Orispal'	cutleaf stephanandra	56	18" ht., #3 Cont.	space 3.5' o.c.
<b>Evergreen Trees and Shrubs</b>					
CCS	Chamaecyparis platensis 'Sungold'	Sungold false cypress	#5 Cont.		
JC	Juniperus chinensis 'Kallia's Compact'	Kallia's Compact juniper	32	18" spd., #3 Cont.	space 5' o.c.
JS	Juniperus scopulorum 'Skyrocket'	Skyrocket Juniper	12	6' ht. B&B	space 4' o.c.
JSB	Juniperus sabinia 'Buffalo'	Buffalo Juniper	22	18" spd., #3 Cont.	space 4' o.c.
JV	Juniperus chinensis var. sargentii 'Viridis'	green sargent juniper	10	18" spd., #3 Cont.	space 5' o.c.
MD	Microbiota decussata	Siberian cypress	40	18" spd., #3 Cont.	space 5' o.c.
PO	Pinus omarika	Siberian spruce	18	8' ht. B&B	space per plan
TM	Taxus x media 'Tauntoni'	Tauntun yew	29	18" spd., #3 Cont.	space 5' o.c.
TO	Thuja occidentalis 'Little Gem'	Little Gem arborvitae	18" spd., #3 Cont.		space 3' o.c.
<b>Perennials/Groundcover Representative Species</b>					
at	Allium tanguticum 'Summer Beauty'	Summer Beauty ornamental onion	72	1 qt. pot	space 15" o.c.
af	Althium filifemina	Lady Fern	77	1 qt. pot	space 15" o.c.
an	Anemone sylvestris	snowdrop anemone	48	1 qt. pot	space 15" o.c.
cb	Calamagrostis brachytricha	Korean leather reed grass	50	1 qt. pot	space 2' o.c.
dc	Deschampsia caespitosa 'Goldschweir'	hairgrass	132	1 qt. pot	space 15" o.c.
epm	Echinacea purpurea 'Kim's Mophead'	Mophead Coneflower	15	1 qt. pot	as shown
epk	Echinacea purpurea 'Kim's Kneehigh'	Kneehigh Coneflower	9	1 qt. Pot.	as shown
gs	Geranium sanguineum	bloody cranesbill	55	1 qt. pot	space 18" o.c.; mix 3 cultivars in equal numbers
	Geranium sanguineum 'Alba'	white flowered cranesbill	55	1 qt. pot	
	Geranium sanguineum var. striatum	striped cranesbill	53	1 qt. pot	
hb	Hemerocallis x 'Barbara Mitchell'	Barbara Mitchell daylily	7	1 qt. pot	space 21" o.c.
hh	Hemerocallis x 'Happy Returns'	Happy Returns daylily	115	1 qt. pot	space 18" o.c.
hl	Hemerocallis x 'Little Grapette'	Little Grapette daylily	209	1 qt. pot	space 15" o.c.
hbt	Hemerocallis x 'Bitsy'	Bitsy Daylily	36	1 qt. pot	as shown
hcl	Hemerocallis x 'Crimson Icon'	Crimson Icon Daylily	96	1 qt. pot	as shown
hf	Hosta 'Francis Williams'	Francis Williams Hosta	122	1 gal.	space 24" o.c.
hr	Hosta 'Royal Standard'	Royal Standard Hosta	33	1 gal.	space 18" o.c.
hr	Miscanthus purpurascens	flame grass	49	1 qt. pot	space 21" o.c.
pq	Parthenocissus quinquefolia	Virginia creeper	12	1 qt. pot	space per plan
pa	Pennisetum alopecuroides 'Hamine'	dwarf fountain grass	114	1 qt. pot	space 15" o.c.
po	Polygonatum odoratum 'Variegatum'	variegated Solomon's seal	34	1 qt. pot	space 15" o.c.
ss	Salvia x superba 'Blue Hill'	Blue Hill sage	28	1 qt. pot	space 15" o.c.
chh	Clematis x 'Hagley Hybrid'	Hagley Clematis	1 qt. Pot.		
cg	Clematis x 'Jackmani'	Jackmani Clematis	1 qt. Pot.		

**Extensive Green Roof Species List**

Sporobolus heterolepis	Prairie Dropseed	#2 cg
Sedum spurium 'Dragons Blood'	Dragons Blood Sedum	plug from 72 cel cont.
Sedum spurium 'Embers'	Embers Sedum	plug from 72 cel cont.
Sedum spurium 'John Creech'	John Creech Sedum	plug from 72 cel cont.
Sedum spurium 'Elizabeth'	Elizabeth Sedum	plug from 72 cel cont.



**KEN SAIKI**  
DESIGN INC  
LANDSCAPE ARCHITECTS  
303 S. PATERSON  
SUITE 100 N.E.  
MADISON, WI 53703  
Phone: 608 951-3600  
Fax: 608 951-9330  
www.ksd-ia.com

**HILLDALE SHOPPING CENTER**  
702 N. MIDVALE BOULEVARD  
MADISON, WI

HILLDALE LAND COMPANY LLC

Sheet Title:  
**PLANTING PLAN EAST**

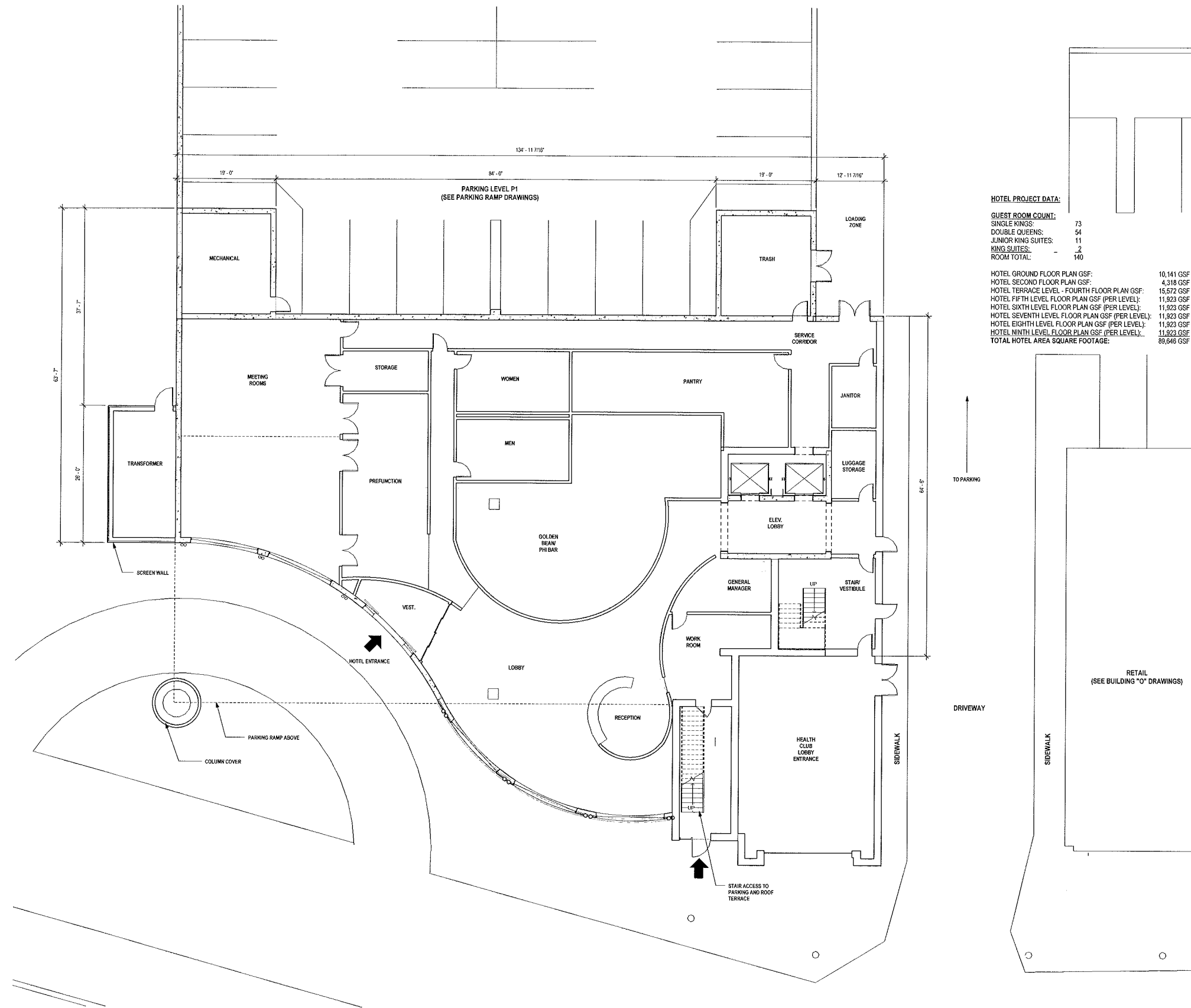
Revisions:

No.	Date	Describe	By

Project Number:      Drawn By:  
   MS

Date Issued:            Reviewed By:  
10-17-07                    KS

Sheet Number:  
**S/L 101**



**HOTEL PROJECT DATA:**

**GUEST ROOM COUNT:**

SINGLE KINGS:	73
DOUBLE QUEENS:	54
JUNIOR KING SUITES:	11
KING SUITES:	2
ROOM TOTAL:	140

HOTEL GROUND FLOOR PLAN GSF:	10,141 GSF
HOTEL SECOND FLOOR PLAN GSF:	4,318 GSF
HOTEL TERRACE LEVEL - FOURTH FLOOR PLAN GSF:	15,572 GSF
HOTEL FIFTH LEVEL FLOOR PLAN GSF (PER LEVEL):	11,923 GSF
HOTEL SIXTH LEVEL FLOOR PLAN GSF (PER LEVEL):	11,923 GSF
HOTEL SEVENTH LEVEL FLOOR PLAN GSF (PER LEVEL):	11,923 GSF
HOTEL EIGHTH LEVEL FLOOR PLAN GSF (PER LEVEL):	11,923 GSF
HOTEL NINTH LEVEL FLOOR PLAN GSF (PER LEVEL):	11,923 GSF
TOTAL HOTEL AREA SQUARE FOOTAGE:	89,946 GSF

1 HOTEL GROUND FLOOR PLAN  
1/8" = 1'-0"



0' 2' 4' 8'  
Scale: 1/8" = 1'-0"  
(30 x 42 Sheet)

**HILDALE SHOPPING CENTER**

702 N. MIDVALE BOULEVARD  
MADISON, WI  
HILDALE LAND COMPANY LLC

Sheet Title:  
HOTEL GROUND FLOOR PLAN

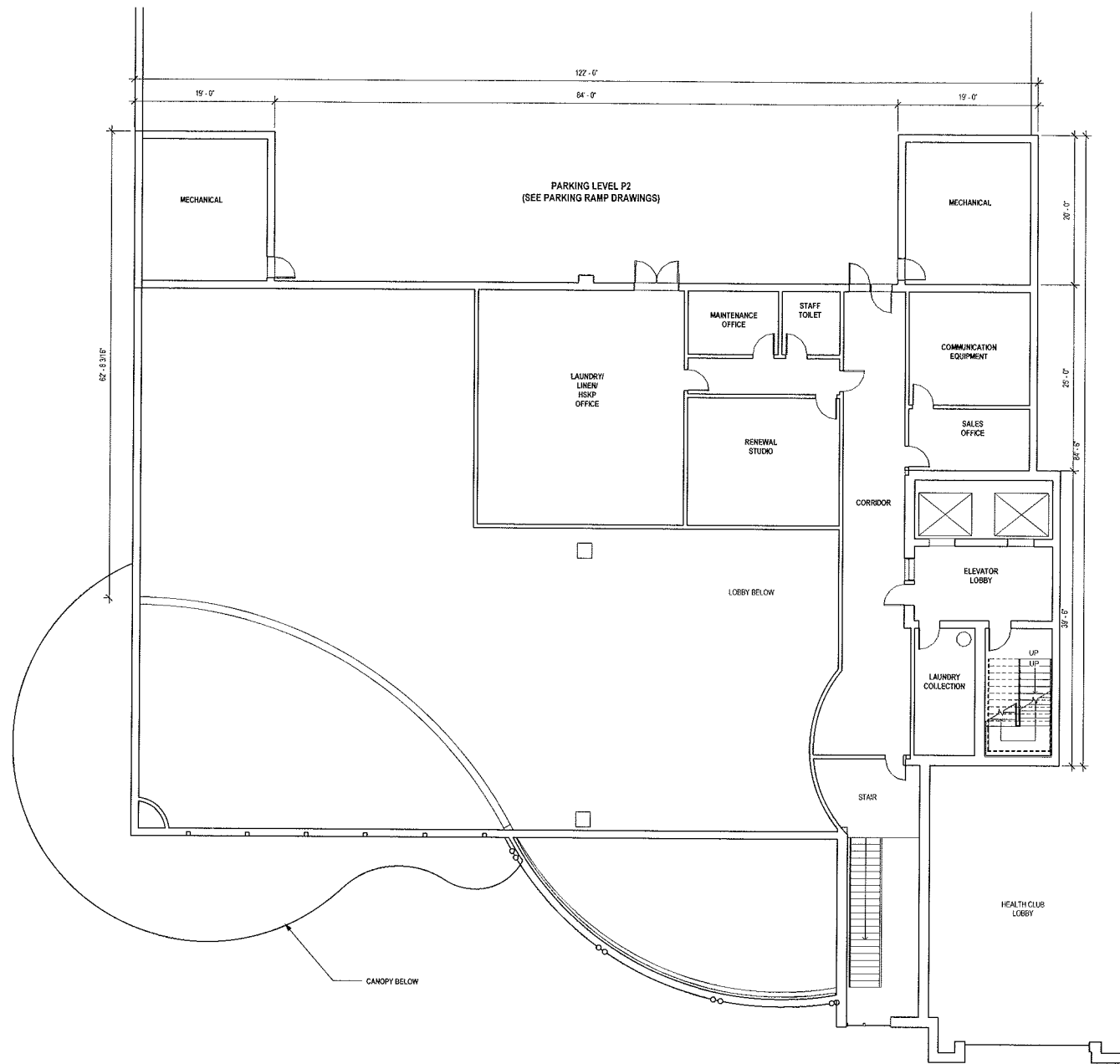
Revisions:

No.	Date:	Description:
10/31/07		UDC submittal

Project Number:  
07043  
Date Issued:  
10-31-07

Sheet Number:  
**A 101**





① HOTEL SECOND FLOOR PLAN  
1/8" = 1'-0"



0' 2' 4' 8'  
Scale: 1/8" = 1'-0"  
(30 x 42 Sheet)

**DIMENSIONIM**  
Madison Design Group  
architecture - engineering - interior design  
505 East Towne Way, Suite 170  
Madison, WI 53713  
P: 608.833.4444 F: 608.829.4445  
dimensionimadison.com

# HILDALE SHOPPING CENTER

702 N. MIDVALE BOULEVARD  
MADISON, WI  
HILDALE LAND COMPANY LLC

Sheet Title:  
HOTEL SECOND FLOOR PLAN

Revisions:	
No.	Description:
10/31/07	UDG submittal

Project Number:  
07043  
Date Issued:  
10-31-07

Sheet Number:  
**A 102**



1 Hotel Terrace Level Fourth Floor  
1/8" = 1'-0"



0' 2' 4' 8'  
Scale: 1/8" = 1'-0"  
(30 x 42 Sheet)

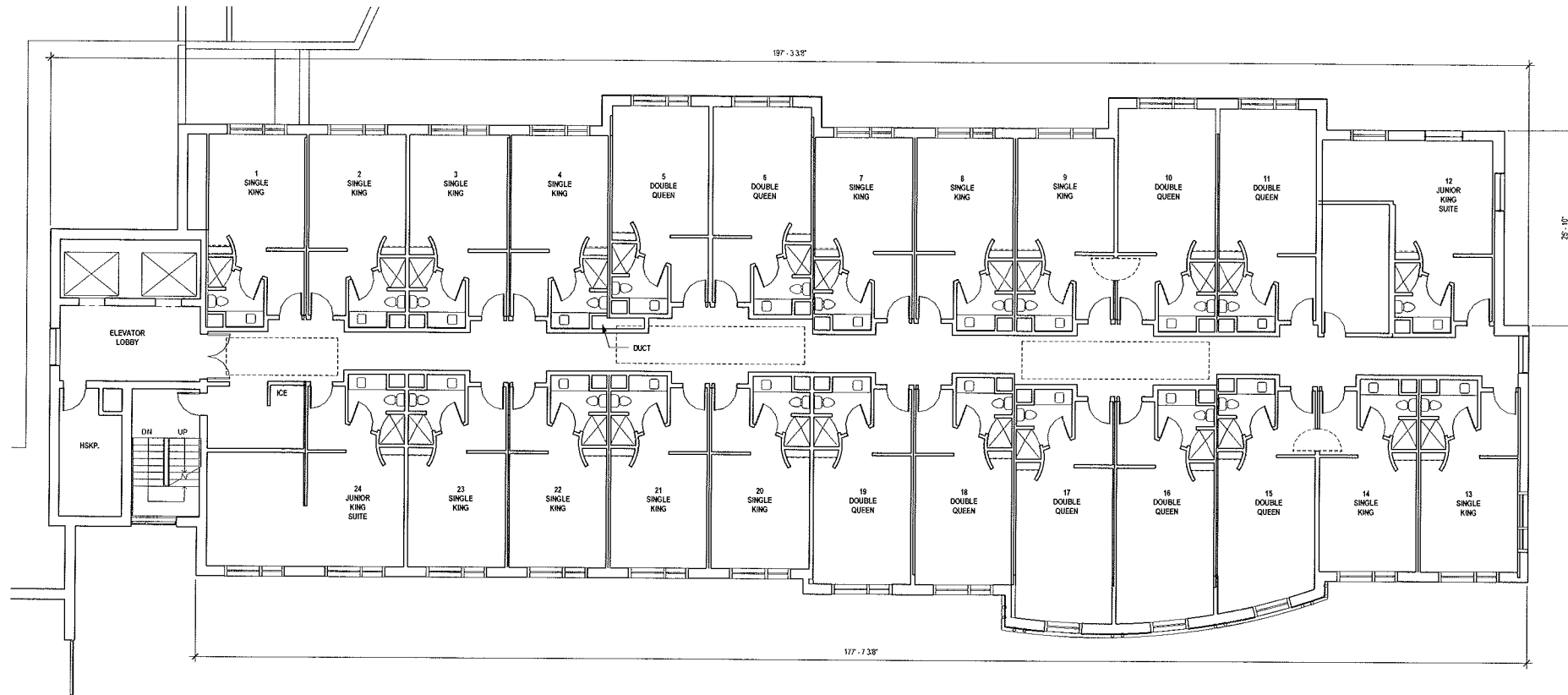
**HILDALE SHOPPING CENTER**  
702 N. MIDVALE BOULEVARD  
MADISON, WI  
HILDALE LAND COMPANY LLC

Sheet Title:  
HOTEL TERRACE LEVEL -  
FOURTH FLOOR PLAN

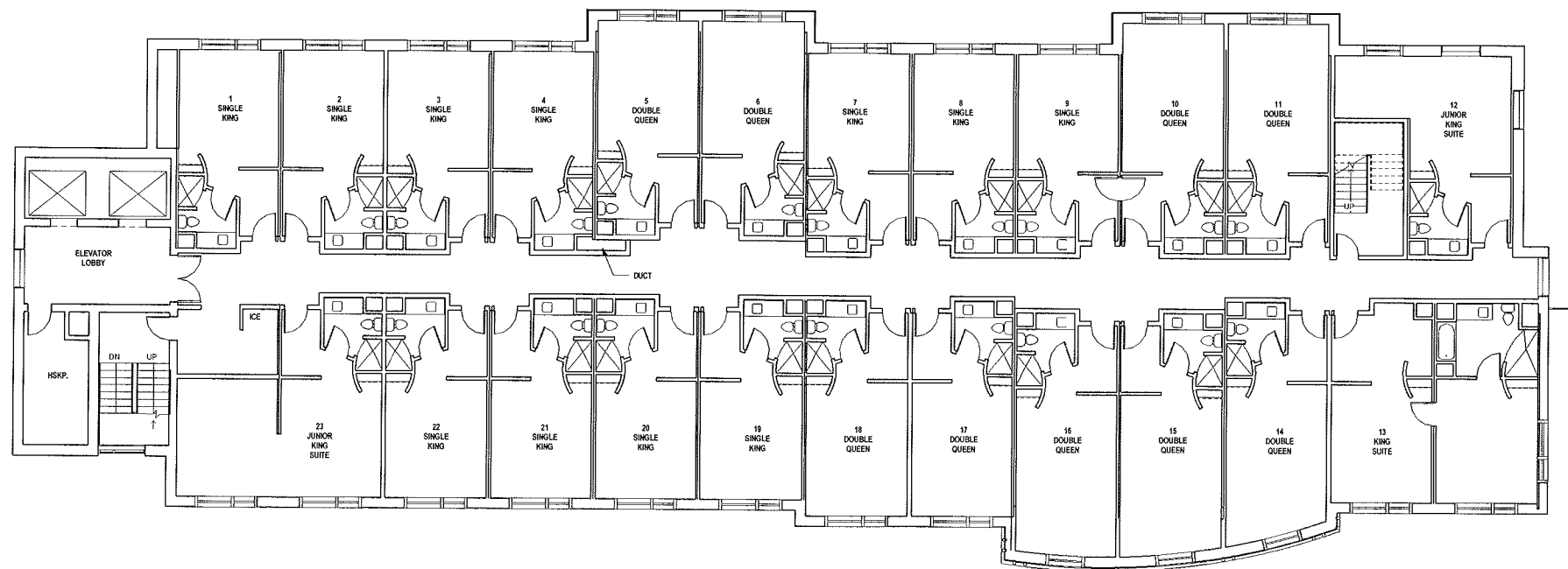
Revisions:		
No.	Date	Description
1	10/31/07	UDC submittal

Project Number:  
07043  
Date Issued:  
10-31-07

Sheet Number:  
**A 103**  
(30 x 42 Sheet)



1 Fifth, Sixth & Seventh Floor Plans  
1/8" = 1'-0"



2 Eighth & Ninth Floor Plans  
1/8" = 1'-0"



0' 2' 4' 8'  
Scale: 1/8" = 1'-0"  
(30 x 42 Sheet)

**DIMENSION**  
Madison Design Group  
architecture · engineering · interior design  
505 East Main Street, Suite 173  
Madison, WI 53703  
P: 608.273.4444 · F: 608.273.4445  
dimensionmadison.com

# HILDALE SHOPPING CENTER

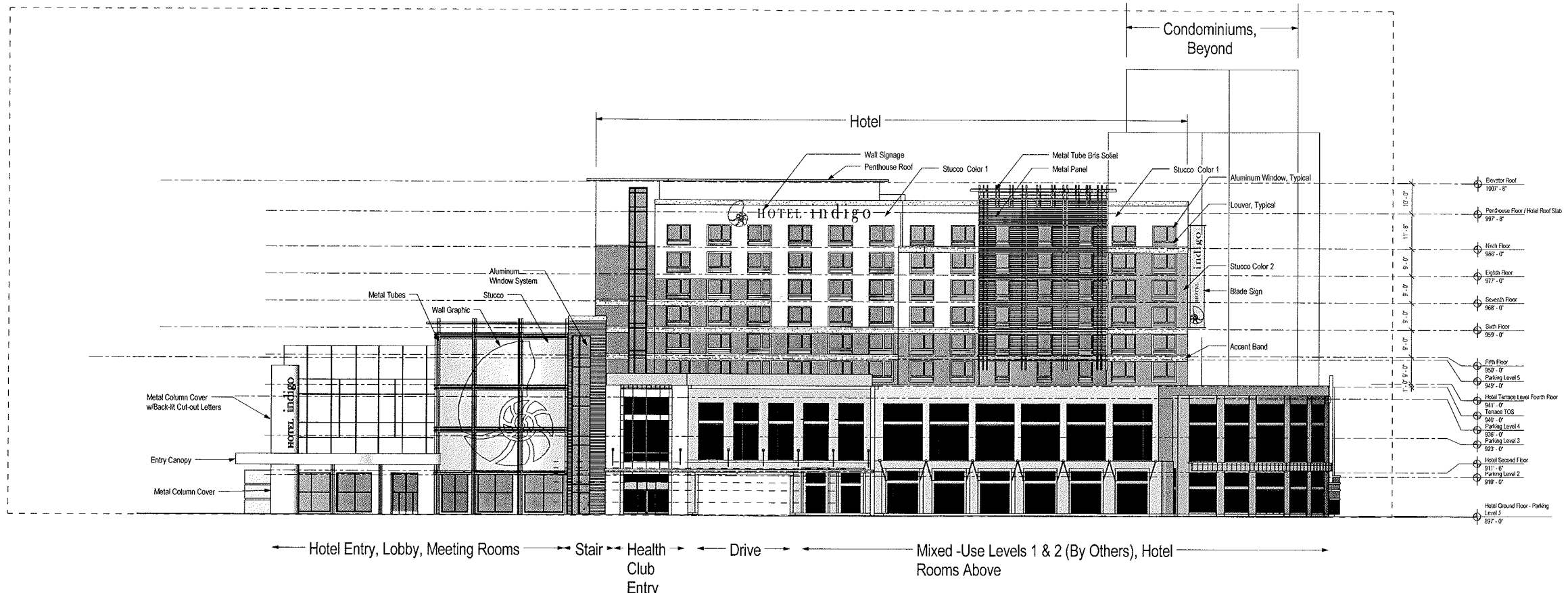
702 N. MIDVALE BOULEVARD  
MADISON, WI  
HILDALE LAND COMPANY LLC

Sheet Title:  
TYPICAL HOTEL FLOOR PLANS

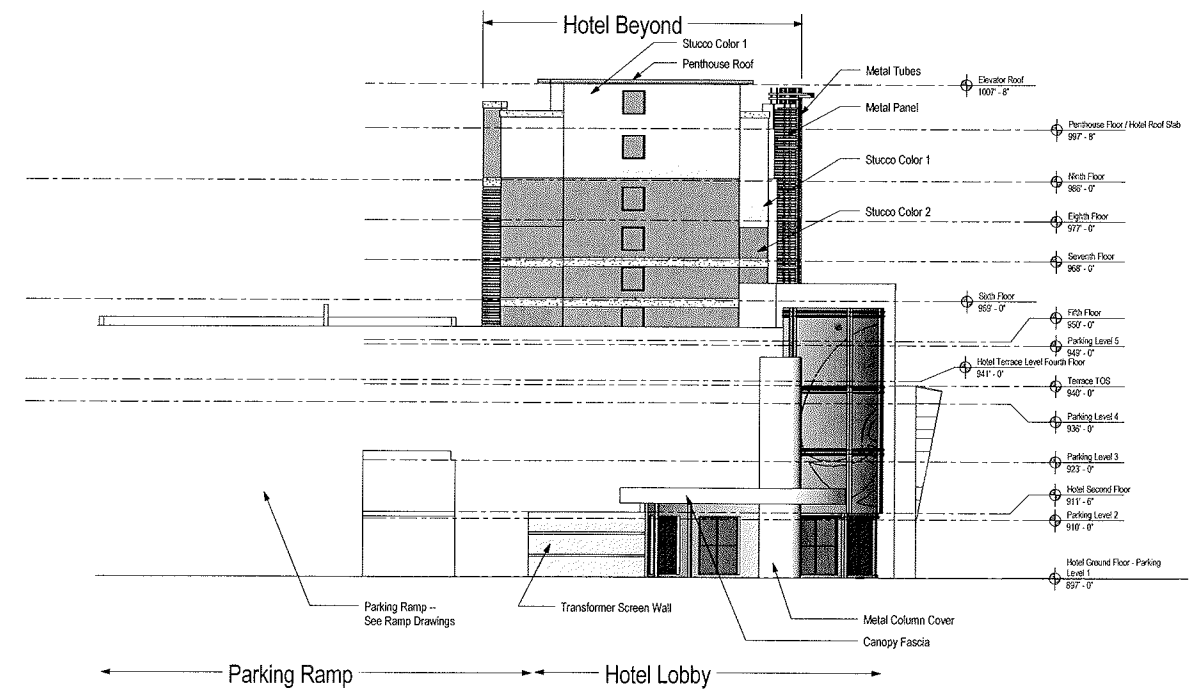
Revisions:	
No.	Description:
10/31/07	UDC submittal

Project Number:  
07043  
Date Issued:  
10-31-07

Sheet Number:  
**A 104**  
(30 x 42 Sheet)



① HOTEL EAST ELEVATION  
 1/16" = 1'-0"



② HOTEL SOUTH ELEVATION  
 1/16" = 1'-0"

**HILDALE SHOPPING CENTER**

702 N. MIDVALE BOULEVARD  
 MADISON, WI  
 HILDALE LAND COMPANY LLC

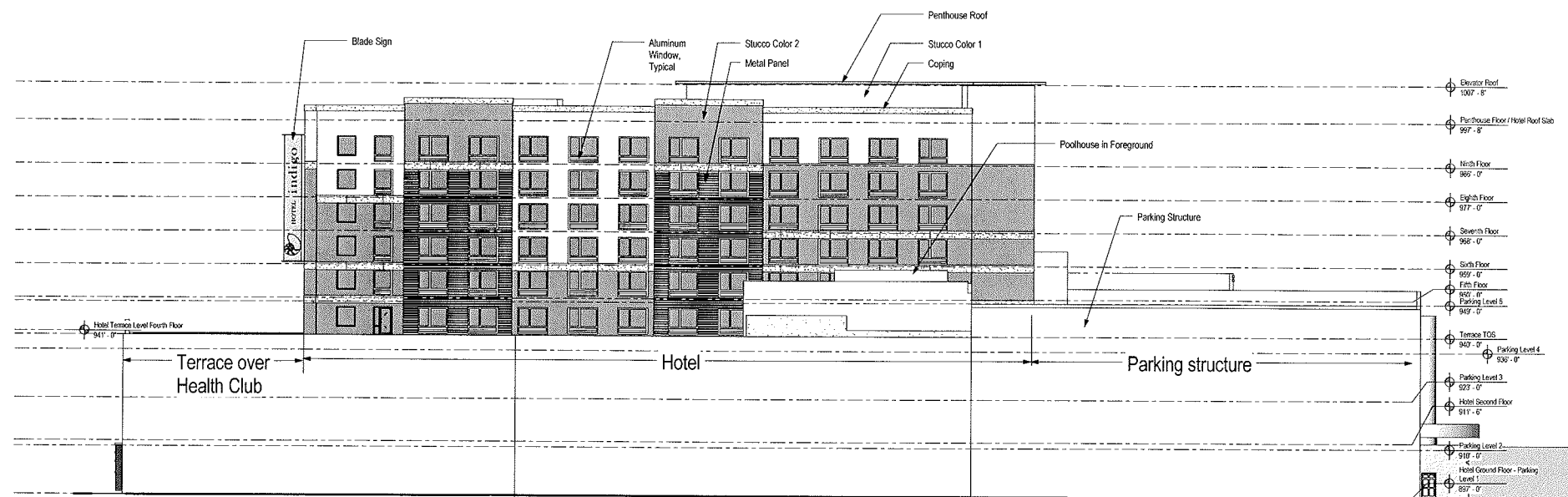
Sheet Title:  
 HOTEL EXTERIOR ELEVATIONS

Revisions:	
No.	Date
1	10/31/07
	UDC submittal

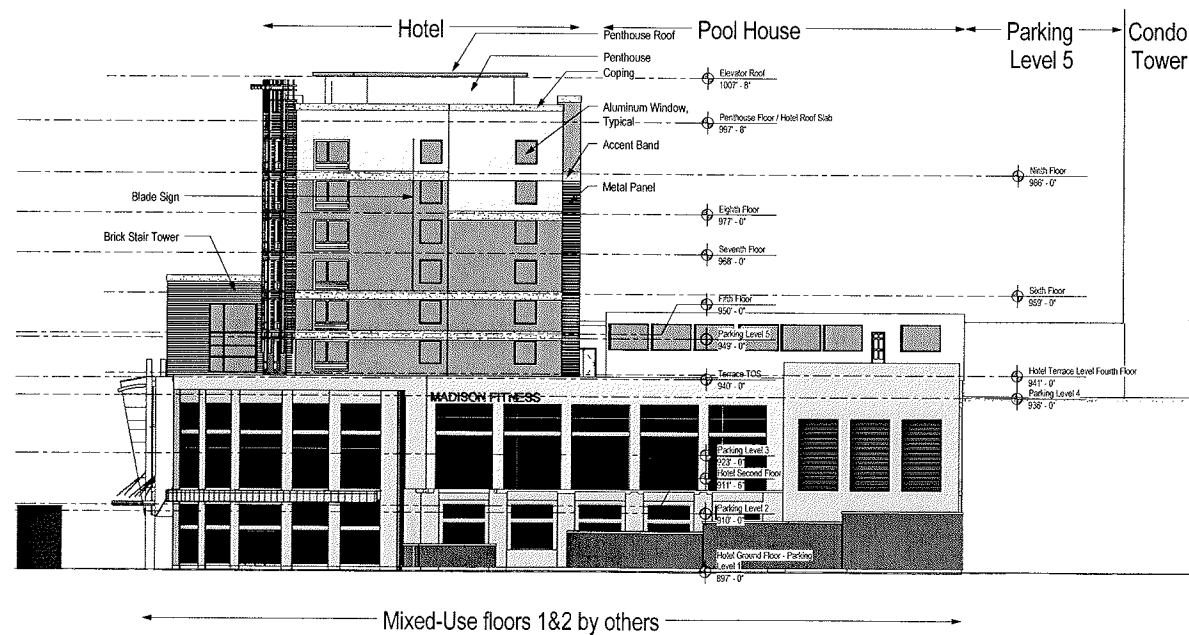
Project Number:  
 07043  
 Date Issued:  
 10-31-07

Sheet Number:  
**A 201**





② HOTEL WEST ELEVATION  
1/16" = 1'-0"



① HOTEL NORTH ELEVATION  
1/16" = 1'-0"

**HILDALE SHOPPING CENTER**

702 N. MIDVALE BOULEVARD  
MADISON, WI  
HILDALE LAND COMPANY LLC

Sheet Title:  
HOTEL EXTERIOR ELEVATIONS

Revisions:	
No.	Date:
10/31/07	UDC submittal

Project Number:	07043
Date Issued:	10-31-07

Sheet Number:  
**A 202**





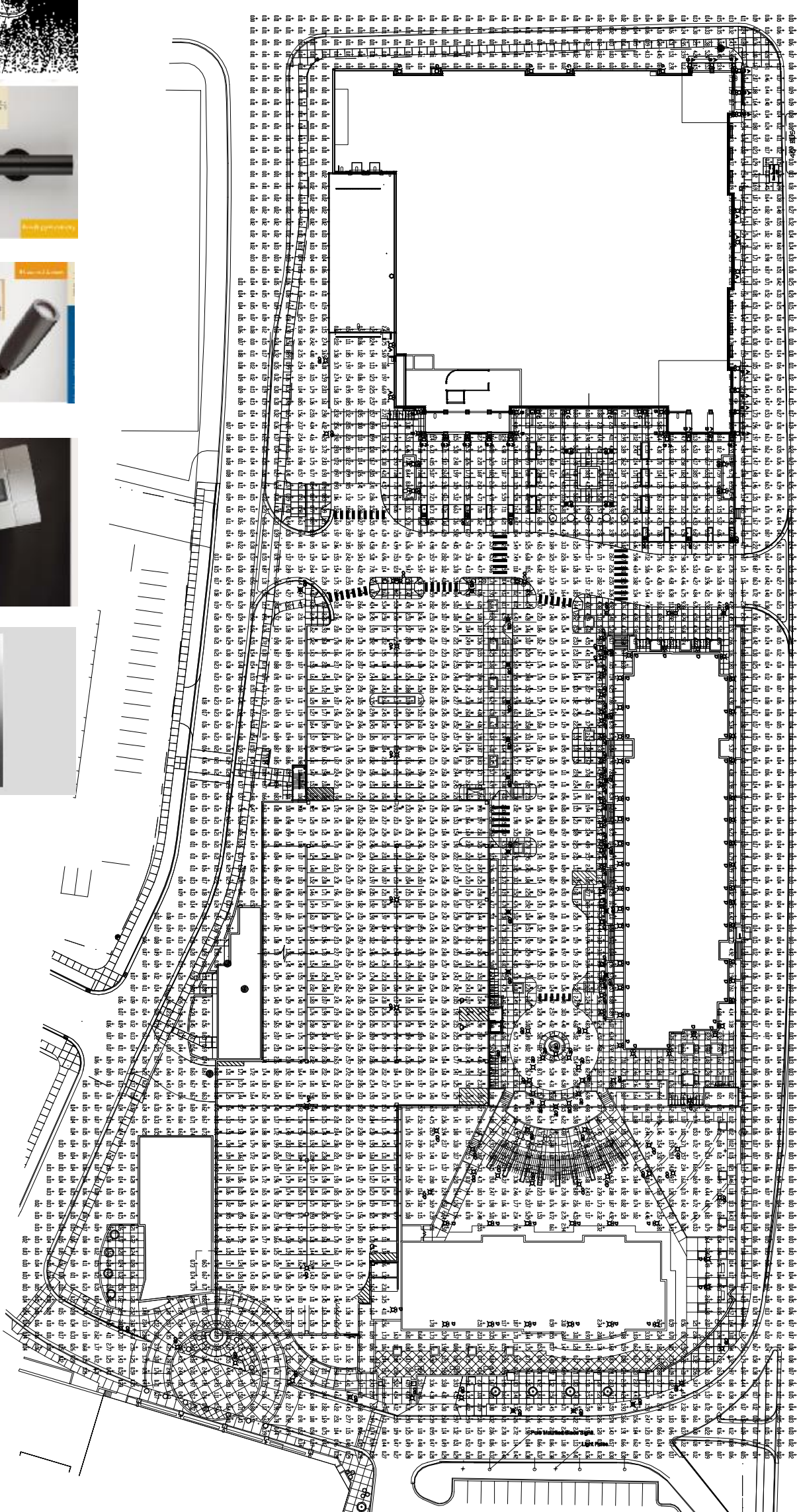
**ARNOLD AND SHERIDAN INC.**  
 ELECTRICAL ■ CIVIL ■ HVAC ■ PLUMBING  
 STRUCTURAL ■ TECHNOLOGY  
 #4010706 WISCONSIN 08/08/2011 - 65100  
 #80067116 WISCONSIN 04/23/2011 - 61130  
 WWW.ANSI100.COM

# HILLDALE SHOPPING CENTER

702 N. MIDVALE BOULEVARD  
 MADISON, WI  
 HILLDALE BUILDING COMPANY LLC

Sheet Title:  
**SITE PHOTOMETRICS**

Revised/By:	Approved/By:
No. Date:	By:
Project Number:	Drawn By:
060297	DTM
Date Issued:	Reviewed By:
10/31/07	AES
Sheet Number:	
<b>EL100</b>	

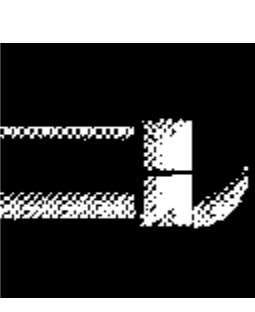
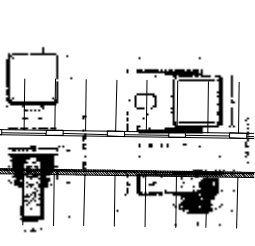
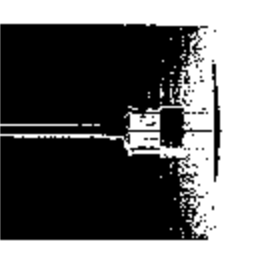
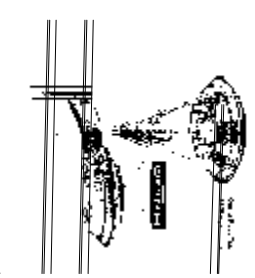
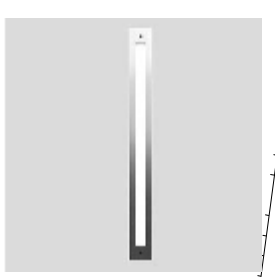
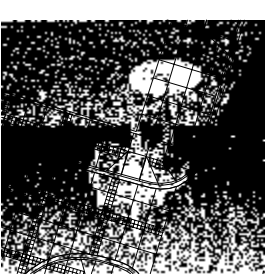


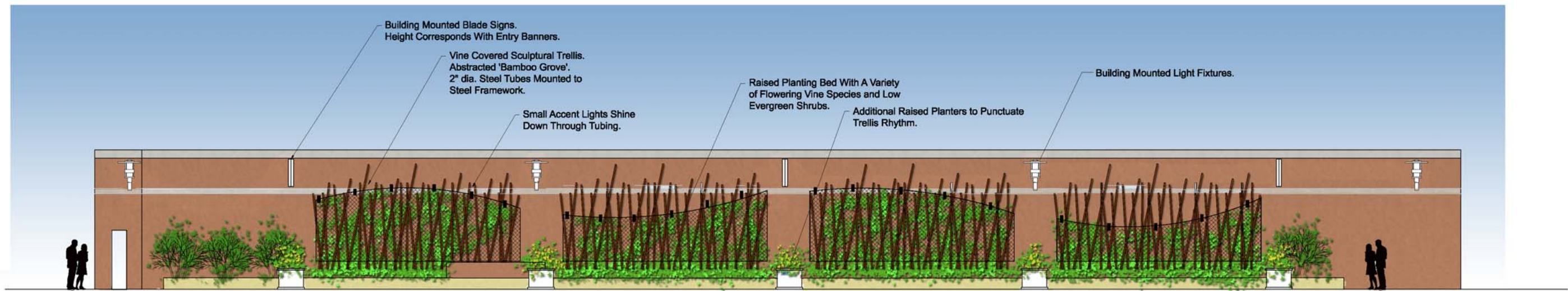
## 1 SITE PHOTOMETRICS

SCALE: 0" = 200' 30"

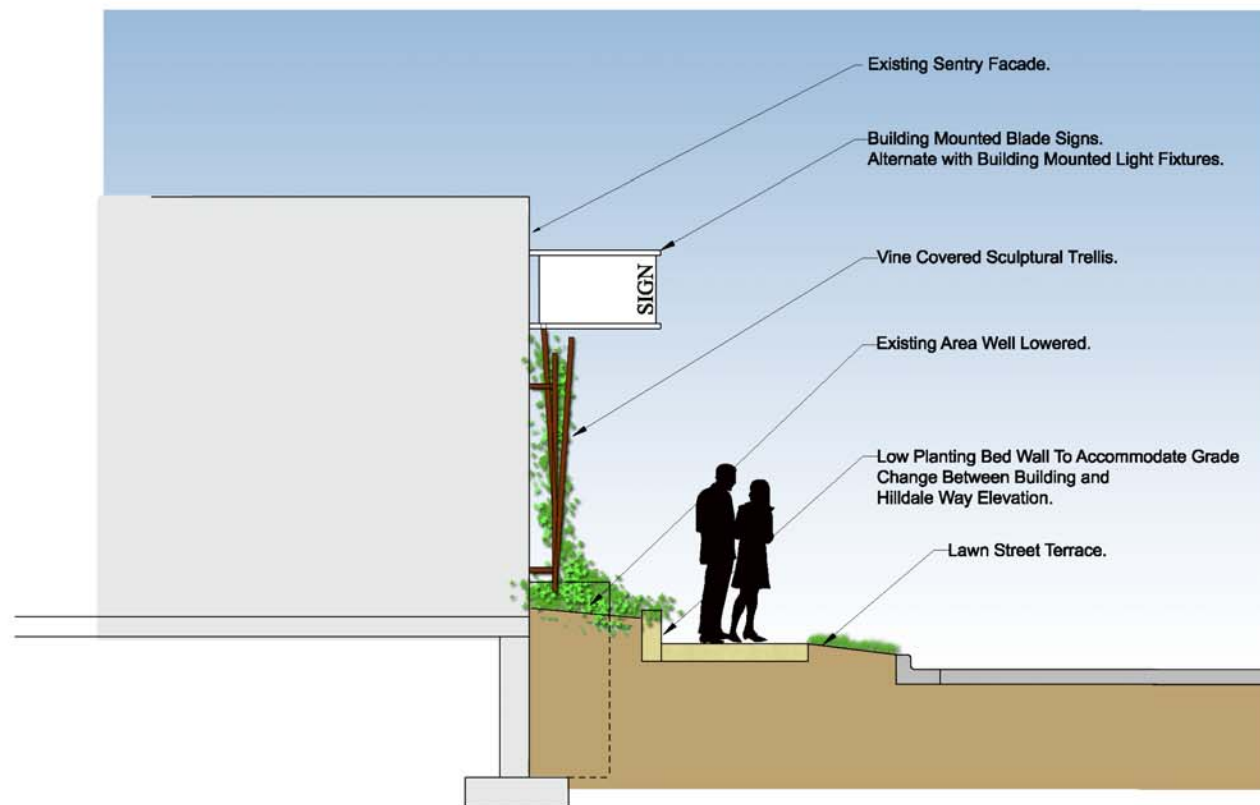
FIXTURE CHARACTERISTICS		CALCULATION PARAMETERS	
TYPE	DESCRIPTION	WATT	WATTAGE
A	LOUIS POLKSEN DOWNING MAIN WALL	(1) 70W MH	6600
B	HX	(2) 30W PAR30	0
C	HX RECESSED **	(1) 20W MH	0
D	HX RECESSED REC-2	(1) 20W MH	6600
DA	HX RECESSED REC-2	(1) 40W 175 MH	50000
DB	HX RECESSED RECESSED-4-1/4" HOLE	(1) 70W MH	18000
DC	HX RECESSED RECESSED-4-1/4" HOLE	(2) 70W MH / (2) 250W MH	25000
DD	HX RECESSED RECESSED-4-1/4" HOLE	(1) 70W MH	6600
DE	HX RECESSED RECESSED-4-1/4" HOLE	(1) 70W MH	6600
DF	HX RECESSED RECESSED-4-1/4" HOLE	LED	0

NOTES:  
 (1) RECESSED RECESSED-4-1/4" HOLE ON 10' OF 30' HOLE AND (2) POLKSEN 70W-10' FIXTURES MOUNTED ON OUTSIDE WALLS AT 4' HIGHS.  
 \*\* FIXTURE TYPE B & C ARE NOT INCLUDED IN PHOTOMETRIC CALCULATIONS





Trellis Elevation



Trellis Section



Jackmanii Clematis



Hagley Hybrid Clematis

Climbing Vines

# Existing Mall West Wall Elevation Proposed Hilldale Development - Madison, WI