



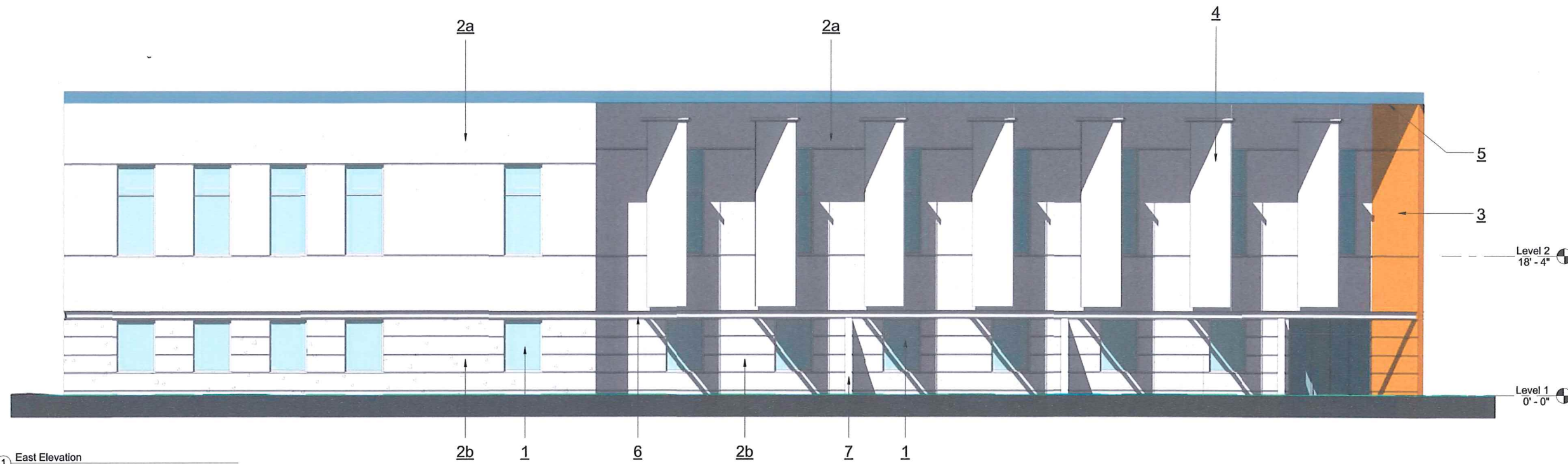
Gold's Gym
5110 High Crossing Blvd
Madison, Wisconsin

U/L 4-8-15 Handout No. 4

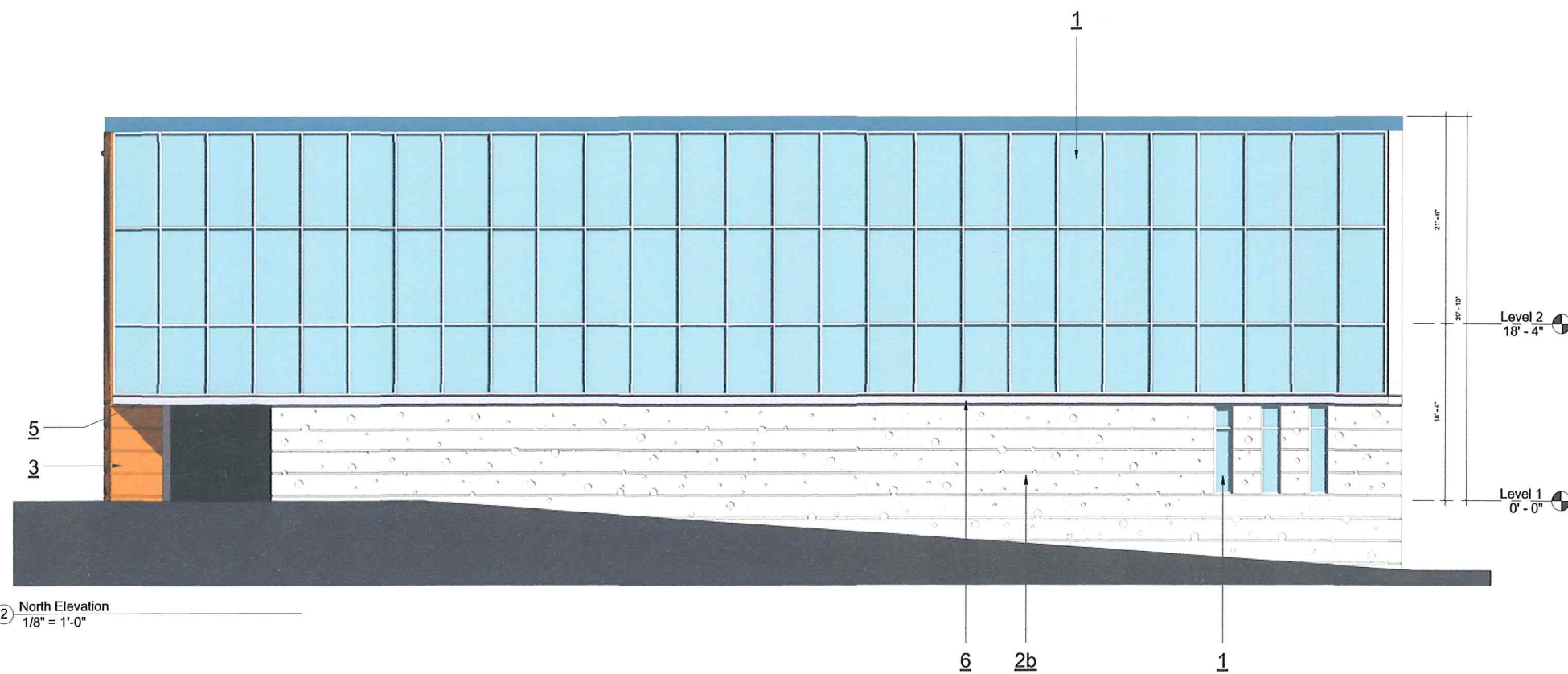
KEE Project #: 2823D 04/08/2015



621 Williamson Street, Madison, WI 53703 (608) 255-9202



① East Elevation
1/8" = 1'-0"



② North Elevation
1/8" = 1'-0"

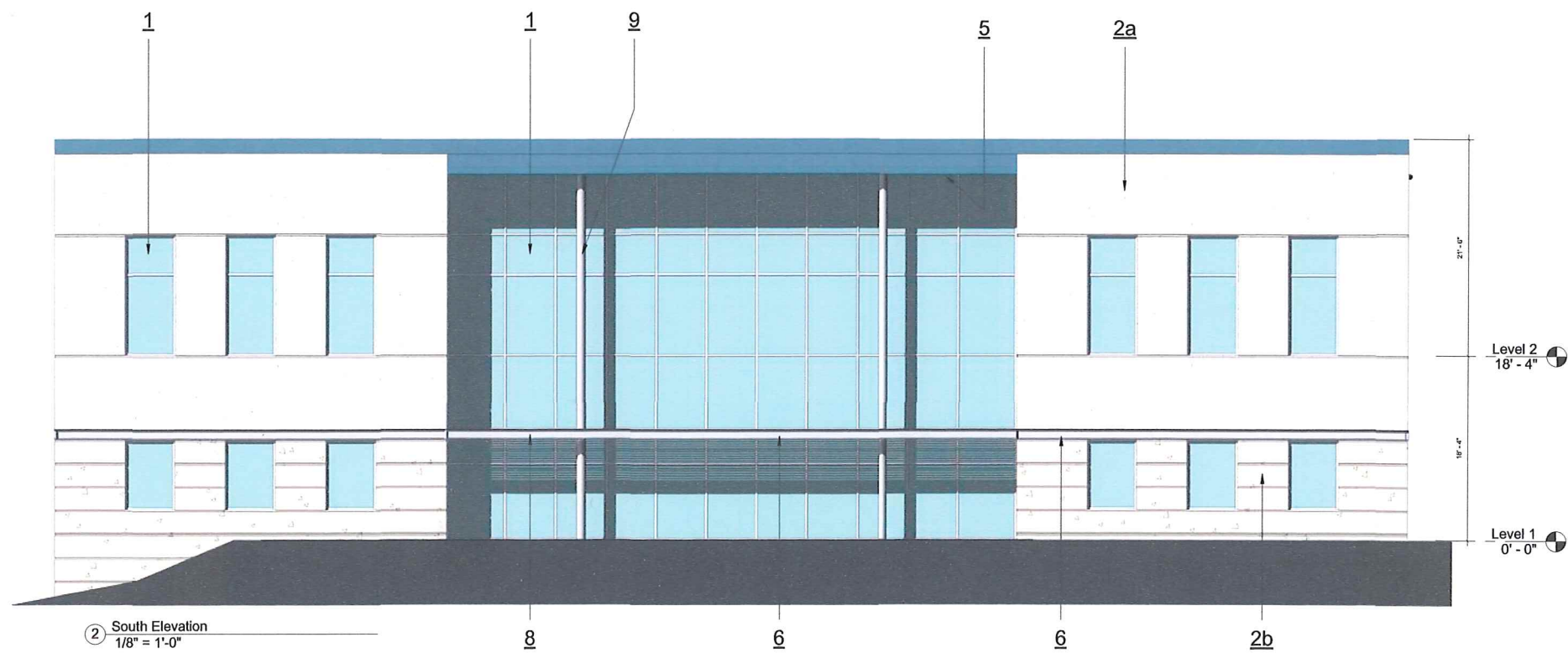
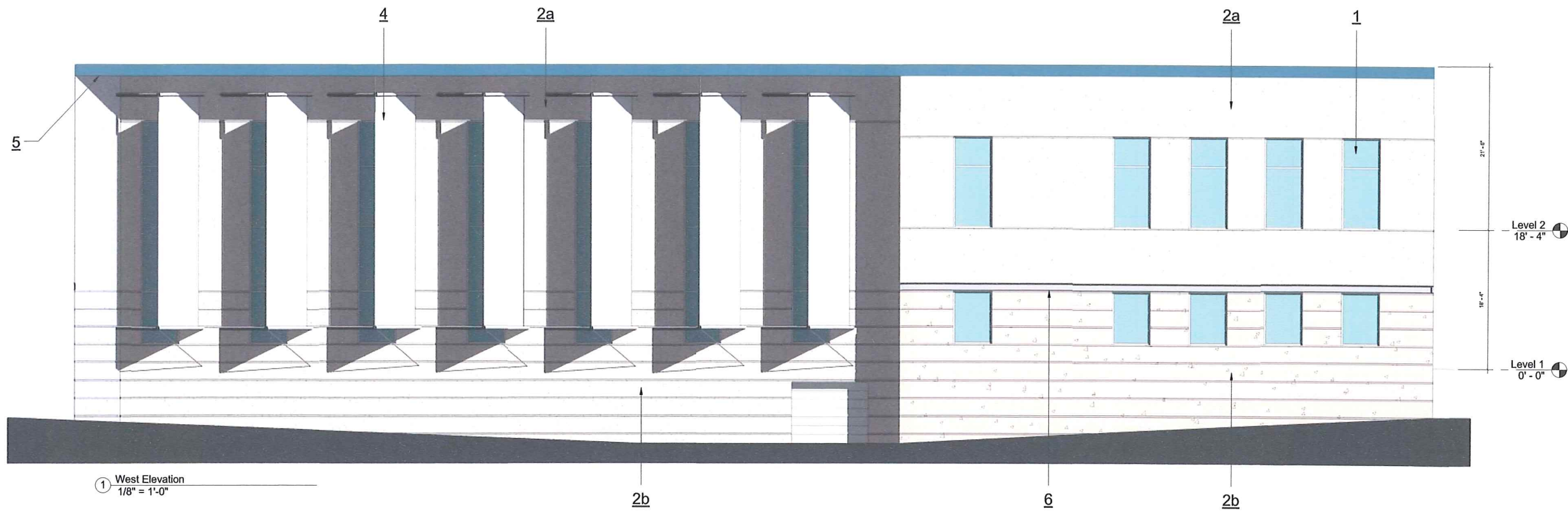
MATERIAL KEY

1. Thermally Broken Aluminum Window System
2. a) Light Sandblasted White Concrete with reveals/rustications
b) Heavy Sandblasted White Concrete with reveals/rustications
3. Stained Sandblasted White Concrete
4. Fabric Sunscreens with Steel/Cable support system
5. Exterior Soffit with Exterior Finish System (Direct Applied 100% Acrylic Architectural Coating)
6. Hot Dipped Galvanized (G90) Steel Channel with Thermal Break Attachment
7. Heavy Sandblasted Solid White Concrete Piers
8. Galvanized Steel Grate Sunshade Device with Steel Support system
9. Galvanized Steel Round Columns

Gold's Gym (As it will be built)

5110 High Crossing Blvd
Madison, Wisconsin

KEE
architecture



MATERIAL KEY

1. Thermally Broken Aluminum Window System
2. a) Light Sandblasted White Concrete with reveals/rustications
b) Heavy Sandblasted White Concrete with reveals/rustications
3. Stained Sandblasted White Concrete
4. Fabric Sunscreens with Steel/Cable support system
5. Exterior Soffit with Exterior Finish System (Direct Applied 100% Acrylic Architectural Coating)
6. Hot Dipped Galvanized (G90) Steel Channel with Thermal Break Attachment
7. Heavy Sandblasted Solid White Concrete Piers
8. Galvanized Steel Grate Sunshade Device with Steel Support system
9. Galvanized Steel Round Columns

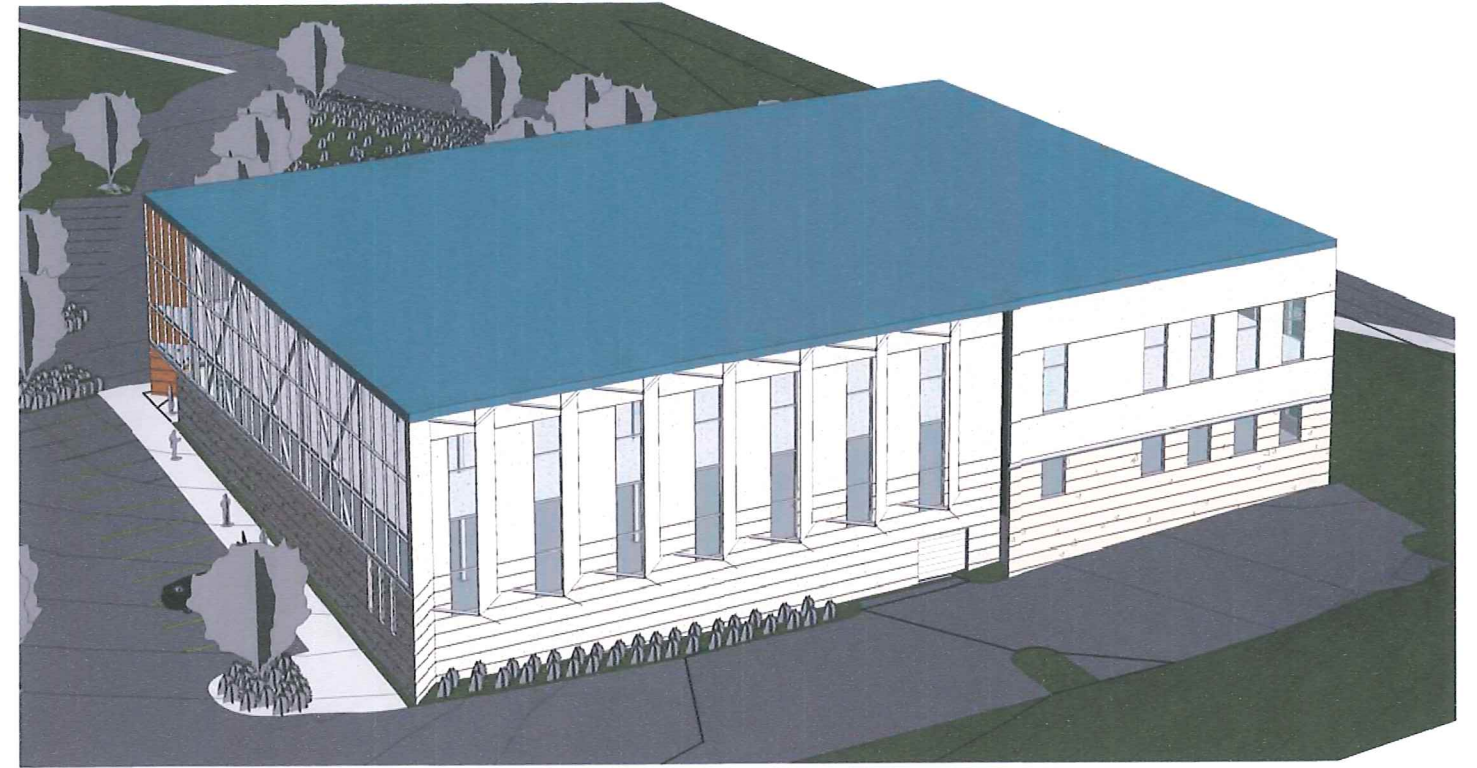
Gold's Gym (As it will be built)

5110 High Crossing Blvd
Madison, Wisconsin

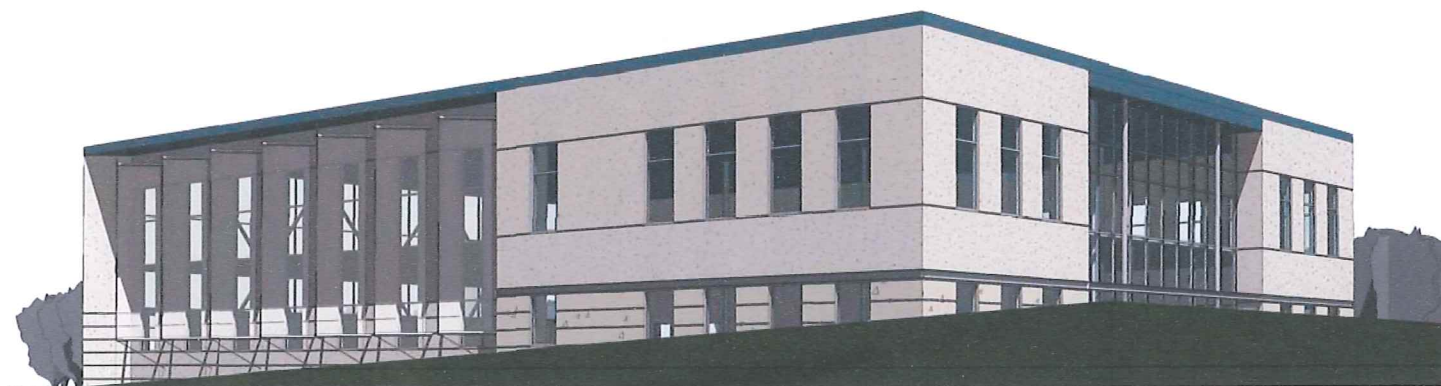




② - Entrance View



① - Birds' Eye View



⑤ - View from Highway (going west)



③ - Street View

Gold's Gym (As it will be built)

5110 High Crossing Blvd
Madison, Wisconsin

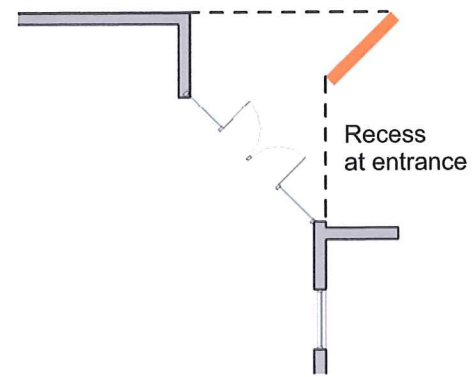




Plan showing Entrance Wall which faces towards the street



View from Street facing Entrance

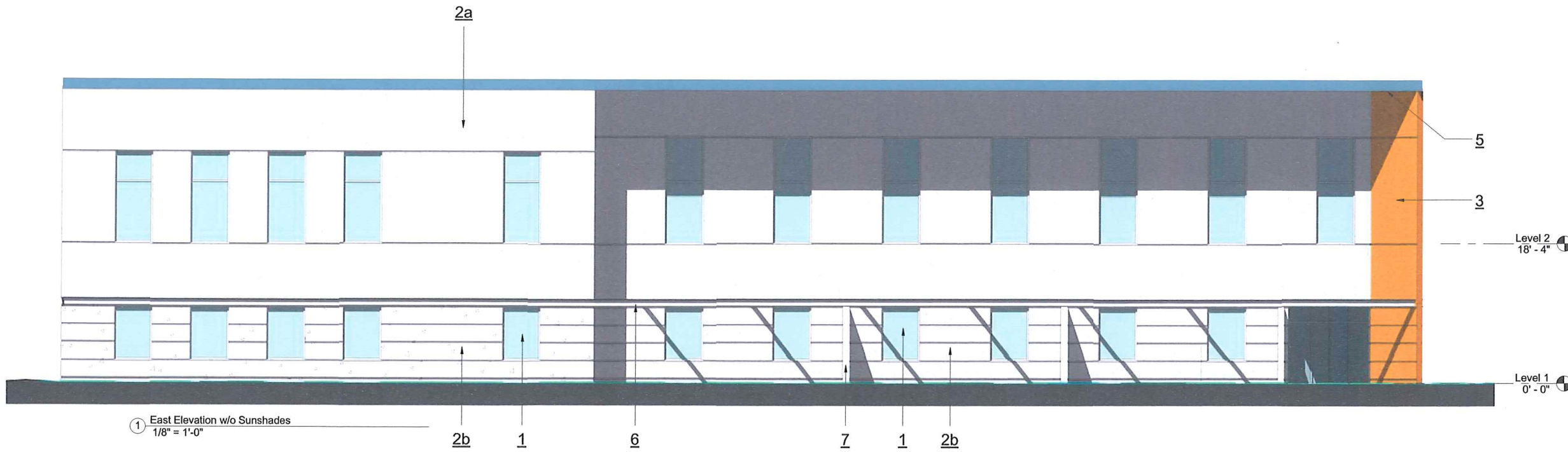


Enlarged Plan at Entrance

Gold's Gym

5110 High Crossing Blvd
Madison, Wisconsin





MATERIAL KEY

- 1. Thermally Broken Aluminum Window System
- 2. a) Light Sandblasted White Concrete with reveals/rustications
b) Heavy Sandblasted White Concrete with reveals/rustications
- 3. Stained Sandblasted White Concrete
- 4. Fabric Sunscreens with Steel/Cable support system
- 5. Exterior Soffit with Exterior Finish System (Direct Applied 100% Acrylic Architectural Coating)
- 6. Hot Dipped Galvanized (G90) Steel Channel with Thermal Break Attachment
- 7. Heavy Sandblasted Solid White Concrete Piers
- 8. Galvanized Steel Grate Sunshade Device with Steel Support system
- 9. Galvanized Steel Round Columns

Gold's Gym (Shown without sunshades per City's request)

5110 High Crossing Blvd
Madison, Wisconsin

