



Memorandum

To: Certified Local Governments in Wisconsin
From: State Historic Preservation Office (SHPO), Certified Local Government Coordinator
Date: June 15, 2023
Re: *National Register of Historic Places* nominations for properties in CLG jurisdictions

When the *State Historic Preservation Office* (SHPO) receives a *National Register of Historic Places* (NRHP) nomination for a property within the jurisdiction of a *Certified Local Government* (CLG), the preparer will share the nomination with the chief elected official and the Historic Preservation Commission (HPC) in that community at least 60 days prior to the State Review Board's consideration of the nomination. The State Review Board meets quarterly, typically in February, May, August, and November.

This is an opportunity for the HPC to comment on the nomination and contribute local knowledge of the property and its history.

As a CLG, your commission's responsibility is to review the nomination and provide an opinion as to whether the property meets the eligibility criteria for the NRHP. Typically, HPCs do this by placing the nomination on the agenda of a regular meeting and allocating time for public comment as well as commission review. It is not within the HPC's responsibility or authority to require or request edits from the nomination preparer. If the commission has concerns or feedback about the content of the nomination, that information should be transmitted directly to the SHPO.

A summary of public comments and/or a letter of the commission's opinion may be submitted, by postal mail or email, to:

Ian Gort
ian.gort@wisconsinhistory.org

State Historic Preservation Office
Wisconsin Historical Society
816 State St. Rm. 305
Madison, WI 53706

The letter may come from the chair of the HPC, the director of the Planning Department, the chief elected official, or any combination thereof. Regardless of whether the SHPO receives correspondence from the CLG, the SHPO will proceed with the nomination process.

Madison Vocational School (Additional Documentation and Boundary Decrease)

Dane County, Wisconsin

Name of Property

County and State

United States Department of the Interior
National Park Service

National Register of Historic Places Registration Form

This form is for use in nominating or requesting determinations for individual properties and districts. See instructions in National Register Bulletin, *How to Complete the National Register of Historic Places Registration Form*. If any item does not apply to the property being documented, enter "N/A" for "not applicable." For functions, architectural classification, materials, and areas of significance, enter only categories and subcategories from the instructions.

1. Name of Property

Historic name: Madison Vocational School
(Additional Documentation and Boundary Decrease)

Other names/site number: Madison Area Technical College; Madison College

Name of related multiple property listing: N/A

2. Location

Street & number: 211 North Carroll Street

City or town: Madison State: WI County: Dane

Not For Publication: Vicinity:

3. State/Federal Agency Certification

As the designated authority under the National Historic Preservation Act, as amended,

I hereby certify that this nomination request for determination of eligibility meets the documentation standards for registering properties in the National Register of Historic Places and meets the procedural and professional requirements set forth in 36 CFR Part 60.

In my opinion, the property meets does not meet the National Register Criteria. I recommend that this property be considered significant at the following

level(s) of significance: National Statewide Local

Applicable National Register Criteria A B C D

Signature of certifying official/Title:	Date
Daina Penkiunas, Wisconsin State Historic Preservation Officer	
State or Federal agency/bureau or Tribal Government	
In my opinion, the property <input type="checkbox"/> meets <input type="checkbox"/> does not meet the National Register criteria.	
Signature of commenting official:	Date
Title:	State or Federal agency/bureau or Tribal Government

Madison Vocational School (Additional Documentation and Boundary Decrease)

Dane County, Wisconsin

Name of Property

County and State

4. National Park Service Certification

I hereby certify that this property is:

- Entered in the National Register
- Determined eligible for the National Register
- Determined not eligible for the National Register
- Removed from the National Register
- Other (explain:)

Signature of the Keeper

Date of Action

5. Classification

Ownership of Property

(Check as many boxes as apply.)

- Private:
- Public – Local
- Public – State
- Public – Federal

Category of Property

(Check only **one** box.)

- Building(s)
- District
- Site
- Structure
- Object

Number of Resources within Property

(Do not include previously listed resources in the county)

Contributing	Noncontributing	
<u>1</u>		Buildings
		Sites
	<u>0</u>	Structures
	<u>0</u>	Objects
<u>1</u>	<u>0</u>	Total
		1

Number of contributing resources previously listed in the National Register

Madison Vocational School (Additional Documentation and Boundary Decrease) Dane County, Wisconsin
Name of Property County and State

6. Function or Use

Historic Functions

(Enter categories from instructions.)

EDUCATION/School

Current Functions

(Enter categories from instructions.)

Vacant

7. Description

Architectural Classification

(Enter categories from instructions.)

Late Gothic Revival

Other: Astylistic Utilitarian

Materials: (enter categories from instructions.)

Principal exterior materials of the property: Brick/Concrete/Asphalt

Narrative Description

(Describe the historic and current physical appearance and condition of the property. Describe contributing and noncontributing resources if applicable. Begin with a **summary paragraph** that briefly describes the general characteristics of the property, such as its location, type, style, method of construction, setting, size, and significant features. Indicate whether the property has historic integrity.)

Madison Vocational School (Additional Documentation and Boundary Decrease)
Name of Property

Dane County, Wisconsin
County and State

The additional documentation and boundary decrease for the Madison Vocational School, listed in the State Register of Historic Places in 2018 and the National Register of Historic Places in 2019, is intended to reflect the present condition of the property and new information that has come to light regarding the historic boundary.¹ The stated significance, integrity, period of significance, and supporting context remain the same.

Number of Resources Within Property

In 2019 and 2020, the non-historic and non-contributing Central High School Entrance Arch and the Parking Ramp & Pedestrian Bridge were demolished. The Central High School Entrance Arch was formerly one of the entries to the Central High School building, constructed in 1908. Central High School was demolished in 1987, and portions of the Entrance Arch were salvaged and moved to a different location. The Parking Ramp & Pedestrian Bridge was constructed in 1987 for Madison Area Technical College (MATC), formerly the Madison Vocational School, outside the period of significance, which ends in 1968. Neither non-contributing resource had a significant relationship with the Madison Vocational School during its period of significance from 1921 to 1968.²

Therefore, the resource count for the property will be adjusted to reflect their removal. There is only one contributing resource, the extant and significant Madison Vocational School including the four-story, Collegiate Gothic (Late Gothic Revival) original section designed by Madison architect Ferdinand Kronenberg and built in 1921; and the astylistic utilitarian additions designed by Law, Law, Potter and Nystrom of Madison and constructed in 1949-1950 (four stories) and 1964 (fifth and sixth stories).

Building Description

The description of the property in the original nomination remains largely the same. However, the non-contributing resources on the northeast side of the block have been demolished, and the area is presently an empty and excavated lot. The central courtyard, which was obscured by the non-extant 1987 Parking Ramp & Pedestrian Bridge is now exposed with its historic window and door openings visible.

Integrity

It might be said that the demolition of the non-historic and non-contributing Central High School Entrance Arch and the Parking Ramp & Pedestrian Bridge has improved the integrity of Madison Vocational School back to its period of significance, 1921-1968, by removing later additions.

¹ Miller, Elizabeth. *Madison Vocational School National Register Nomination*. 2018.

² *A Century of Success: Madison Area Technical College – 1912 to 2012*. Madison, WI: Madison Area Technical College, 2011.

Madison Vocational School (Additional Documentation and Boundary Decrease) Dane County, Wisconsin
Name of Property County and State

8. Statement of Significance

The significance of the Madison Vocational School for its role in the local history of vocational education has not changed since the nomination.

Applicable National Register Criteria

(Mark "x" in one or more boxes for the criteria qualifying the property for National Register listing.)

- A. Property is associated with events that have made a significant contribution to the broad patterns of our history.
- B. Property is associated with the lives of persons significant in our past.
- C. Property embodies the distinctive characteristics of a type, period, or method of construction or represents the work of a master, or possesses high artistic values, or represents a significant and distinguishable entity whose components lack individual distinction.
- D. Property has yielded, or is likely to yield, information important in prehistory or history.

Criteria Considerations

(Mark "x" in all the boxes that apply.)

- A. Owned by a religious institution or used for religious purposes
- B. Removed from its original location
- C. A birthplace or grave
- D. A cemetery
- E. A reconstructed building, object, or structure
- F. A commemorative property
- G. Less than 50 years old or achieving significance within the past 50 years

Madison Vocational School (Additional Documentation and Boundary Decrease) Dane County, Wisconsin
Name of Property County and State

Areas of Significance

(Enter categories from instructions.)

EDUCATION

Significant Person

(Complete only if Criterion B is checked.)

N/A

Period of Significance

1921-1968

Cultural Affiliation

N/A

Significant Dates

1921; 1949-1950; 1964

Architect/Builder

Kronenberg, Ferdinand (1921)

Law, Law, Potter, and Nystrom (1950/64)

Statement of Significance Summary Paragraph (Provide a summary paragraph that includes level of significance, applicable criteria, justification for the period of significance, and any applicable criteria considerations.)

The Madison Vocational School remains locally significant under Criterion A in the area of Education, for its association with the vocational school movement and its long history as the site of vocational education in the city of Madison.

The period of significance remains unchanged and extends from 1921, when the Madison Vocational School opened in its new home along North Carroll and West Johnson Streets, through 1968, the year before the school expanded into the non-extant former Central High School building.

Narrative Statement of Significance (Provide at least **one** paragraph for each area of significance.)

Madison Vocational School (Additional Documentation and Boundary Decrease) Dane County, Wisconsin
Name of Property County and State

The historic context of the City of Madison and vocational and technical education remains the same as the nomination as does all comparative analysis and statements of significance. The Madison Vocational School, later known as the Madison Area Technical College (MATC), had its home at 211 North Carroll Street throughout the period of significance from 1921 to 1968.

The Archaeological potential and acknowledgment of the presence of American Indians on this land also remain unchanged.

Reasons for Boundary Decrease

The boundary justification in the nomination for the Madison Vocational School includes all lots, Block 82, Original Plat or the entire city block. However, during the period of significance from 1921 to 1968, Madison Vocational School operated solely within the footprint of the extant building on the southwest portion of the city block, specifically on Lots 1, 2, 3, 8, 9, and 10. The remaining northeast portion of the block, specifically Lots 4, 5, 6, and 7, was operated by the Madison Metropolitan School District for Central High School. While the two buildings touched one another via a party wall or fire wall, common of nearly all buildings in a dense urban setting, the two entities were not functionally related. They were separate institutions that had separate missions, buildings, and resources during the period of significance. They also leased the land separately from the City of Madison.³

While Madison Vocational School and Central High School may have been located on the same block, they were on separate lots and did not share the same legal parcel during the period of significance. Furthermore, both institutions separately leased the land where their facilities were located from the City of Madison, which did not combine the lots on the block. Deeds on file with the City of Madison indicate that the block remained ten separate lots throughout the twentieth century. The lots were not altered or combined into one parcel for the construction of the Central High School in 1908, nor Madison Vocational School in 1921 or its additions in 1950 and 1964. Historic plat maps of the city and Sanborn Fire Insurance maps corroborate this as they show distinct and numerous lots for the block.⁴

It was not until after the period of significance that Madison Vocational School began to occupy portions of the northeast half of the block. The non-extant Central High School building was constructed before Madison Vocational School in 1908 on Lots 4, 5, 6, and 7. The school was renamed in 1939 and continued to function as a high school until 1968 when a rapidly growing student body of the baby boom era encouraged the Madison Metropolitan School District to construct two new large suburban high schools in the mid-1960s.

In 1969, Madison Vocational School acquired the former Central High School building for additional classrooms, a library, and other facilities. It also changed its name to Madison Area

³ “Addition Makes Educational Facility One of Finest of Its Type in Country.” *Wisconsin State Journal*, April 29, 1951.

⁴ Photographs. 1930-2018. On file at the Wisconsin Historical Society Library Archives; and Plat Maps, Madison, Wisconsin. 1911- 1976. On file at the Wisconsin Historical Society Library Archives; and Sanborn Fire Insurance Maps, Madison, Wisconsin. 1902-1956. On file at the Wisconsin Historical Society Library Archives.

Madison Vocational School (Additional Documentation and Boundary Decrease) Dane County, Wisconsin
Name of Property County and State

Technical College (MATC) - with emphasis on the word "Area" - indicating the beginning of a process of reorganization which saw the creation of numerous satellite campuses throughout the region. Two large funding referendums, relying on state and federal aid for funding, were passed in the 1970s, and MATC began a slow process of investment in its numerous satellite campuses and disinvestment in its original downtown location.⁵ The former Central High School building was demolished by MATC in 1986 to make room for the non-extant Parking Ramp & Pedestrian Bridge.⁶

Lots 1-10 were first combined into one parcel in 2018, the same year the nomination was submitted. Work is currently underway to separate the parcel in two: one being the former Lots 1, 2, 3, 8, 9, and 10 and the other being former Lots 4, 5, 6, and 7. A boundary that includes former Lots 1, 2, 3, 8, 9, and 10 only, is approximately 198' x 264', and specifically excludes former Lots 4, 5, 6, and 7, would more accurately reflect the historic boundary of Madison Vocational School during its period of significance.

⁵ Spinti, Robert James. "The Development of Trade and Industrial Education in Wisconsin." Ph.D. dissertation. University of Missouri, 1968; and "Area Vocational, Technical, and Adult Education District No. 4: 1969 Annual Report." Prepared for the Madison Board of Vocational, Technical and Adult Education, Madison, WI: 1970.

⁶ Daly, John. *History of Madison Public Schools: two articles from MMSD's Staff News*. Madison, WI: s.p., 1988-1989. On file through the University of Wisconsin-Madison Library system
<https://digital.library.wisc.edu/1711.dl/E2PWVUV3RIKCW8Y>

Madison Vocational School (Additional Documentation and Boundary Decrease)
Name of Property

Dane County, Wisconsin
County and State

9. Major Bibliographical References

Previous documentation on file (NPS):

preliminary determination of individual listing (36 CFR 67) has been requested

previously listed in the National Register

previously determined eligible by the National Register

designated a National Historic Landmark

recorded by Historic American Buildings Survey # _____

recorded by Historic American Engineering Record # _____

recorded by Historic American Landscape Survey # _____

Primary location of additional data:

State Historic Preservation Office

Other State agency

Federal agency

Local government

University

Other

Name of repository: Madison College

Wisconsin Architecture and History Inventory # 108279

and/or Archaeological Site Inventory #: _____

Bibliography (Cite the books, articles, and other sources used in preparing this form.)

A Century of Success: Madison Area Technical College – 1912 to 2012. Madison, WI: Madison Area Technical College, 2011.

“Addition Makes Educational Facility One of Finest of Its Type in Country.” *Wisconsin State Journal*, April 29, 1951.

“Area Vocational, Technical, and Adult Education District No. 4: 1969 Annual Report.” Prepared for the Madison Board of Vocational, Technical and Adult Education, Madison, WI: 1970.

Daly, John. *History of Madison Public Schools: two articles from MMSD’s Staff News.* Madison, WI: s.p., 1988-1989. On file through the University of Wisconsin-Madison Library system <https://digital.library.wisc.edu/1711.dl/E2PWVUV3RIKCW8Y>

Miller, Elizabeth. *Madison Vocational School National Register Nomination.* 2018.

Photographs. 1930-2018. On file at the Wisconsin Historical Society Library Archives.

Madison Vocational School (Additional Documentation and Boundary Decrease) Dane County, Wisconsin
Name of Property County and State

Plat Maps, Madison, Wisconsin. 1911- 1976. On file at the Wisconsin Historical Society Library Archives.

Sanborn Fire Insurance Maps, Madison, Wisconsin. 1902-1956. On file at the Wisconsin Historical Society Library Archives.

Spinti, Robert James. "The Development of Trade and Industrial Education in Wisconsin." Ph.D. dissertation. University of Missouri, 1968.

Wyatt, Barbara L., ed. *Cultural Resource Management in Wisconsin*. Madison, WI: State Historical Society of Wisconsin, 1986.

Madison Vocational School (Additional Documentation and Boundary Decrease) Dane County, Wisconsin
Name of Property County and State

10. Geographical Data

Acreage of Property: 1.21 acres

Provide either the UTM system or latitude/longitude coordinates

UTM References

Datum (indicated on USGS map):

NAD 1927 or NAD 1983

1. Zone: 16 Easting: 305660 Northing: 4771810

Verbal Boundary Description (Describe the boundaries of the property.)

Madison Vocational School is located in the city of Madison, Dane County, Wisconsin, and its Verbal Boundary Description should be changed to former Lots 1, 2, 3, 8, 9, and 10, Block 82, of the Original Plat to reflect the removal of the northeast side of the block, specifically former Lots 4, 5, 6, and 7 which were not historically associated with the school during the period of significance and are now extraneous acreage. The legal and historic boundary follows the back line of the sidewalk along North Carroll Street at a distance of 264 feet, and the back line of the sidewalk along West Dayton and West Johnson Streets at 198 feet, and the northeast side of the building that aligns with the historic lot configuration for the block before it was combined into one parcel in 2018. The previously listed Acreage of Property was 2.0 acres; this would decrease it to 1.21 acres.

Boundary Justification (Explain why the boundaries were selected.)

With this boundary decrease, the boundary of the Madison Vocational School will enclose all those resources historically associated with the property during the period of significance, 1921 to 1968.

Madison Vocational School (Additional Documentation and Boundary Decrease) Dane County, Wisconsin
Name of Property County and State

11. Form Prepared By

name/title: Rowan Davidson, Associate AIA
organization: Legacy Architecture, Inc.
street & number: 605 Erie Avenue, Suite 101
city or town: Sheboygan State: WI zip code: 53081
Email: rdavidson@legacy-
architecture.com
Telephone: 920-783-6303

Additional Documentation

Figure Log

Figure 1. Site Map and Photo Key

Figure 2. Photo 1

Figure 3. Photo 2

Figure 4. Photo 3

Figure 5. 1936 City of Madison Plat Map

Figure 6. 1941, updated 1956 Sanborn Fire Insurance Map

Figure 7. 1964 Aerial Photography



Figure 1. Site Map and Photo Key

Madison Vocational School (Additional Documentation and Boundary Decrease)
Name of Property

Dane County, Wisconsin
County and State



Figure 2. Photo 1 looking south



Figure 3. Photo 2 looking southwest

Madison Vocational School (Additional Documentation and Boundary Decrease)
Name of Property

Dane County, Wisconsin
County and State



Figure 4. Photo 3 looking southwest

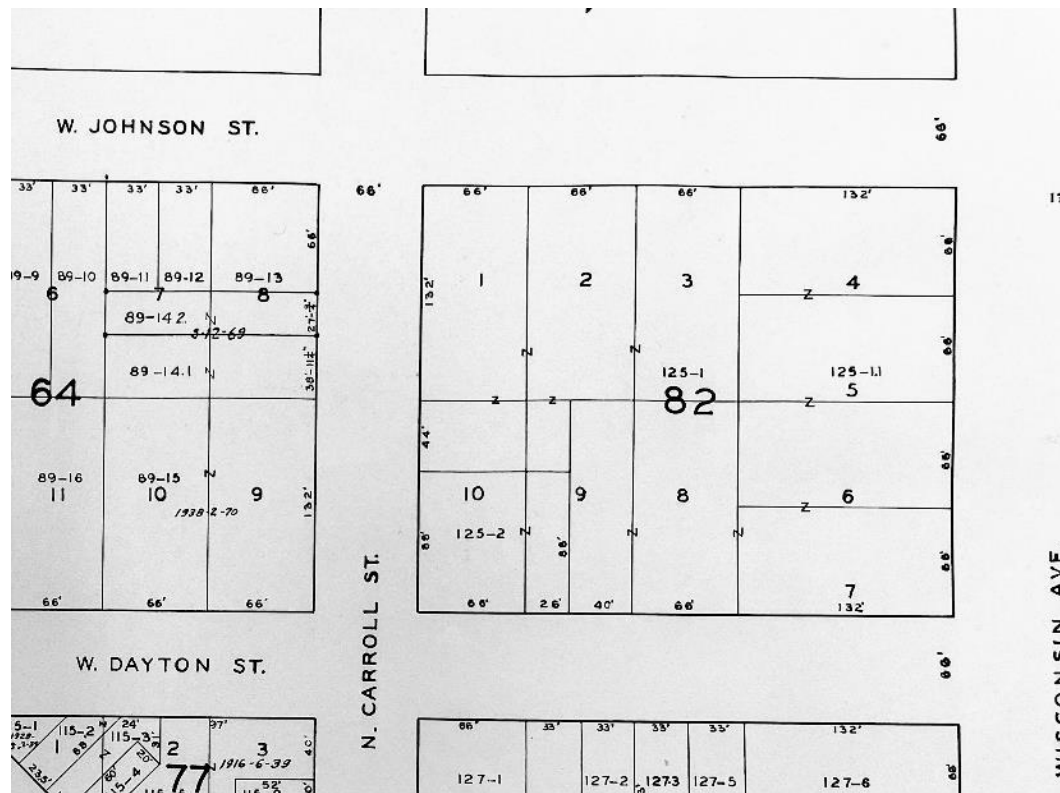


Figure 5. 1936 City of Madison Plat Map. On file at the Wisconsin Historical Society Archives.

Name of Property

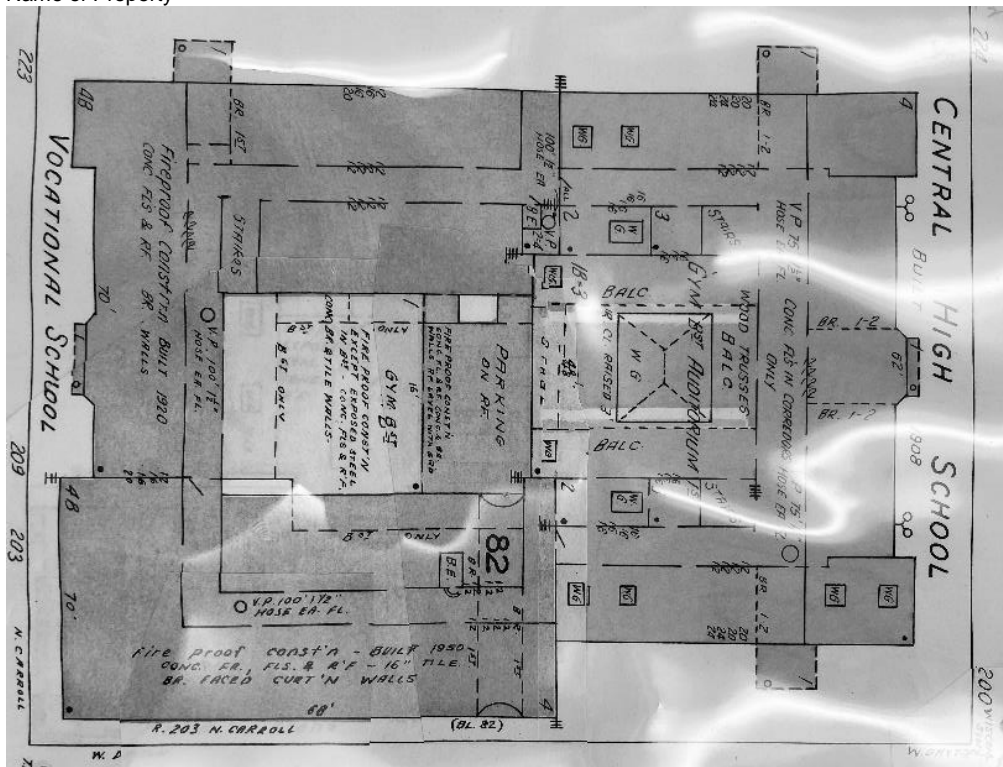


Figure 6. 1941, updated 1956 Sanborn Fire Insurance Map showing party wall and fire wall between the Vocational School to the left and Central High School to the right. On file at the Wisconsin Historical Society Archives.



Figure 7. 1964 Aerial Photography looking north, City of Madison, On file at the Wisconsin Historical Society Archives.

Madison Vocational School (Additional Documentation and Boundary Decrease) Dane County, Wisconsin
Name of Property County and State

Photographs

Submit clear and descriptive photographs. The size of each image must be 1600x1200 pixels (minimum), 3000x2000 preferred, at 300 ppi (pixels per inch) or larger. Key all photographs to the sketch map. For simplicity, the name of the photographer, photo date, etc. may be listed once in the photograph log. The photograph order must correspond with the photograph log.

Photo Log

Name of Property: Madison Vocational School
City or Vicinity: Madison
County: Dane State: Wisconsin
Photographer: Rowan Davidson
Date photographed: May 3, 2023

Photo 1 of 3 (WI_DaneCounty_MadisonVocationalSchoolBoundaryDecrease_0001)
Exterior, view from the north, 1921 original building

Photo 2 of 3 (WI_DaneCounty_MadisonVocationalSchoolBoundaryDecrease_0002)
Exterior, view from the northeast, courtyard

Photo 3 of 3 (WI_DaneCounty_MadisonVocationalSchoolBoundaryDecrease_0003)
Exterior, view from the northeast, 1950/1964 addition

Paperwork Reduction Act Statement: This information is being collected for nominations to the National Register of Historic Places to nominate properties for listing or determine eligibility for listing, to list properties, and to amend existing listings. Response to this request is required to obtain a benefit in accordance with the National Historic Preservation Act, as amended (16 U.S.C.460 et seq.). We may not conduct or sponsor and you are not required to respond to a collection of information unless it displays a currently valid OMB control number.

Estimated Burden Statement: Public reporting burden for each response using this form is estimated to be between the Tier 1 and Tier 4 levels with the estimate of the time for each tier as follows:

- Tier 1 – 60-100 hours
- Tier 2 – 120 hours
- Tier 3 – 230 hours
- Tier 4 – 280 hours

The above estimates include time for reviewing instructions, gathering, and maintaining data, and preparing and transmitting nominations. Send comments regarding these estimates or any other aspect of the requirement(s) to the Service Information Collection Clearance Officer, National Park Service, 1201 Oakridge Drive Fort Collins, CO 80525.

Madison Vocational School (Additional Documentation and Boundary Decrease) Dane County, Wisconsin
 Name of Property County and State

Property Owner

Complete this item at the request of SHPO or FPO.)

name/title	<u>Sylvia Ramirez, Vice President Administration</u>		
organization	<u>Madison College</u>	date	<u>6/13/2023</u>
street & number	<u>1701 Wright Street</u>	phone	<u>(608) 243-4587</u>
city or town	<u>Madison</u>	state	<u>WI</u>
		zip code	<u>53704</u>

If there are other interested parties that should be noticed, please provide in the tables below

name/title	_____		
organization	_____	date	_____
street & number	_____	phone	_____
city or town	_____	state	<u>WI</u>
		zip code	_____

name/title	_____		
organization	_____	date	_____
street & number	_____	phone	_____
city or town	_____	state	<u>WI</u>
		zip code	_____

name/title	_____		
organization	_____	date	_____
street & number	_____	phone	_____
city or town	_____	state	<u>WI</u>
		zip code	_____



Madison Vocational School (Additional Documentation, Boundary Decrease), Madison, Dane County, 1 of 3



Madison Vocational School (Additional Documentation, Boundary Decrease), Madison, Dane County, 2 of 3



Madison Vocational School (Additional Documentation, Boundary Decrease), Madison, Dane County, 3 of 3