



North Side Bus Charger and Route B Service Changes

Transportation Commission
November 20, 2024





2

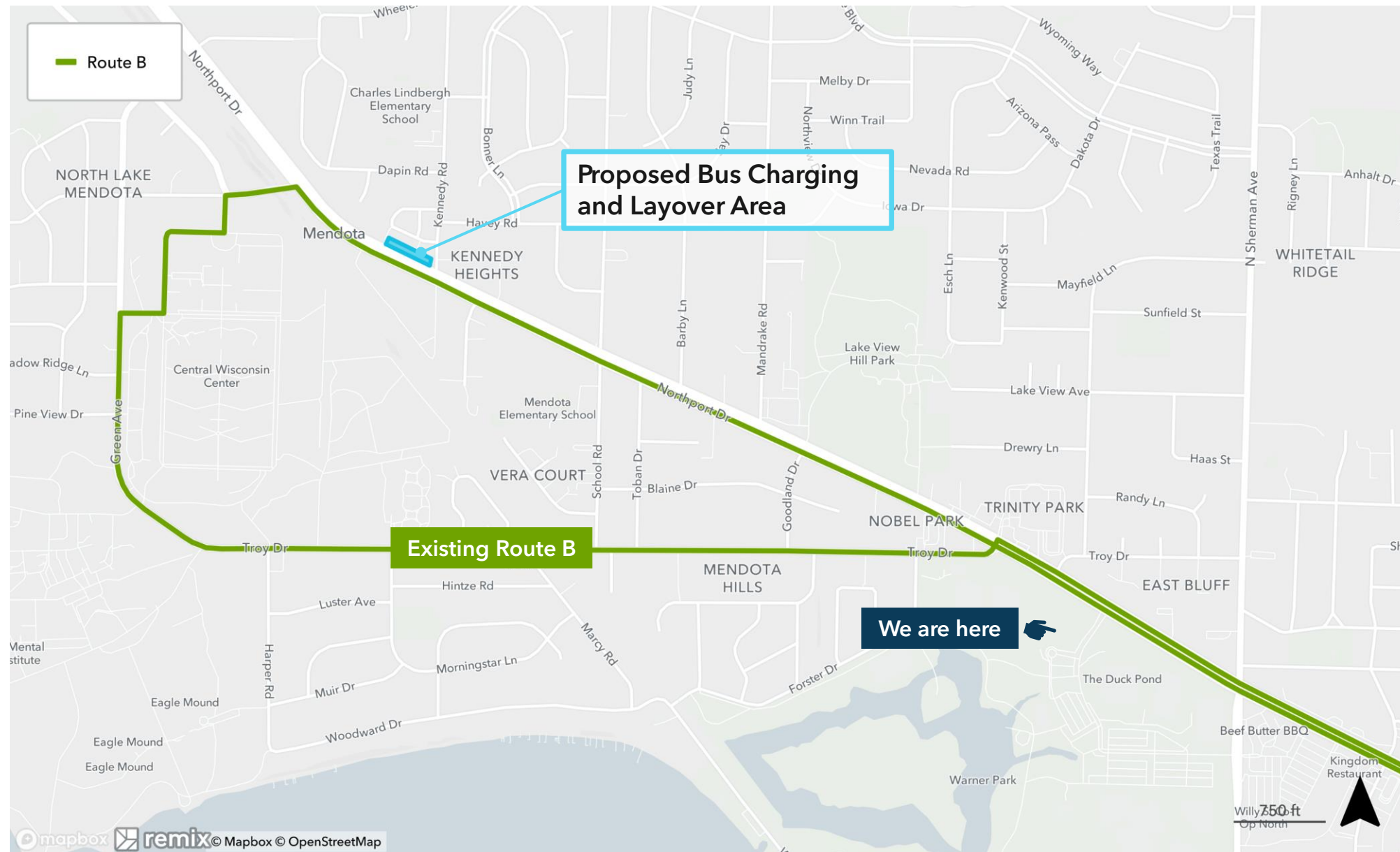
Route B challenges

- Route B buses need to be swapped out at the end of the line after two round trips
- The end-of-line layover at Troy and Northport means that people need to wait through a driver break
- North-South BRT planning is in progress



3

Location of proposed charger





4

On-route bus charger

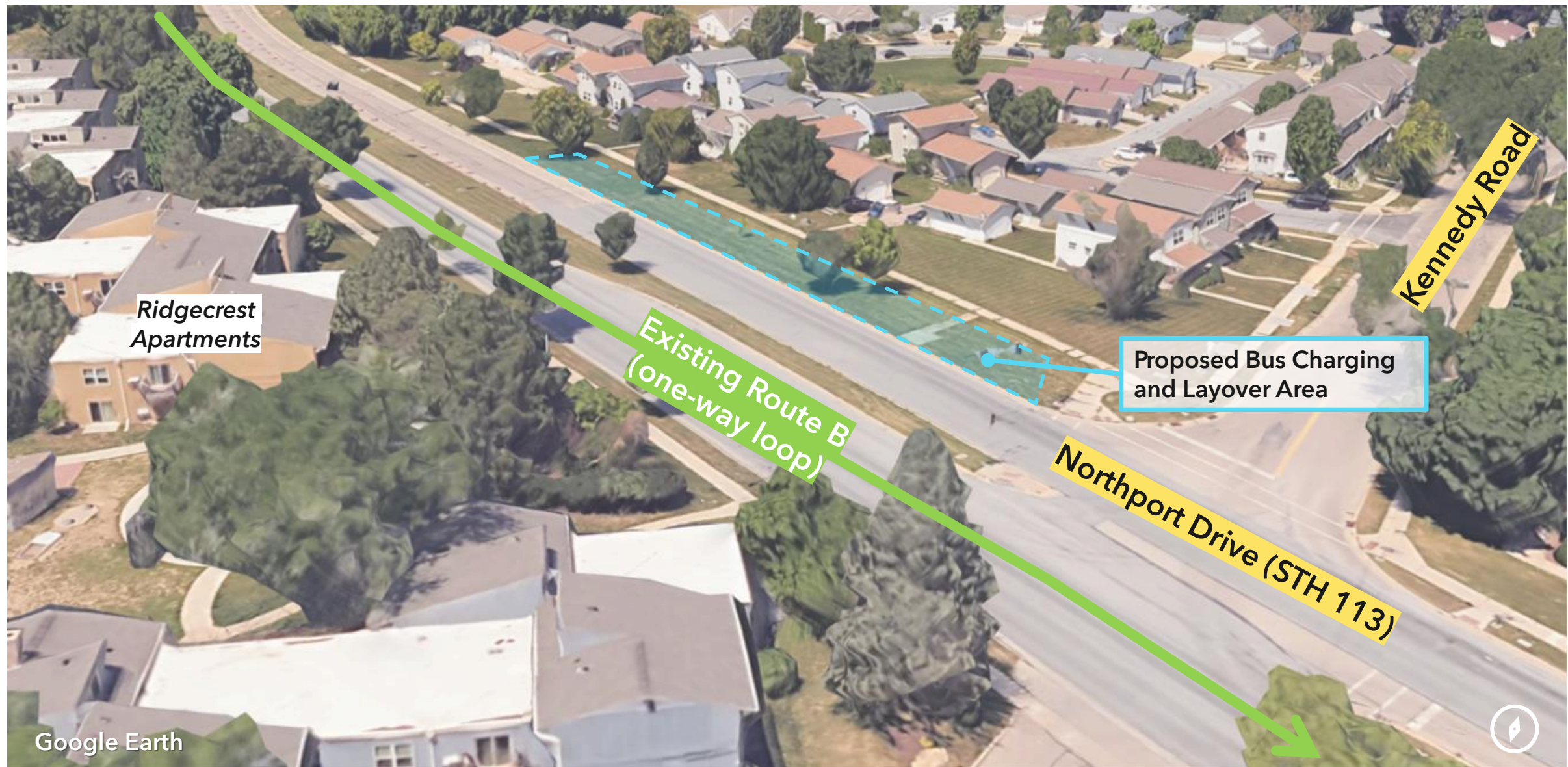


- Fast, high-capacity charger
- Charges bus battery at the end of the line.
- Pantograph extends to the bus
- Metro has four in operation supporting Rapid Route A



5

Proposed Charger Location

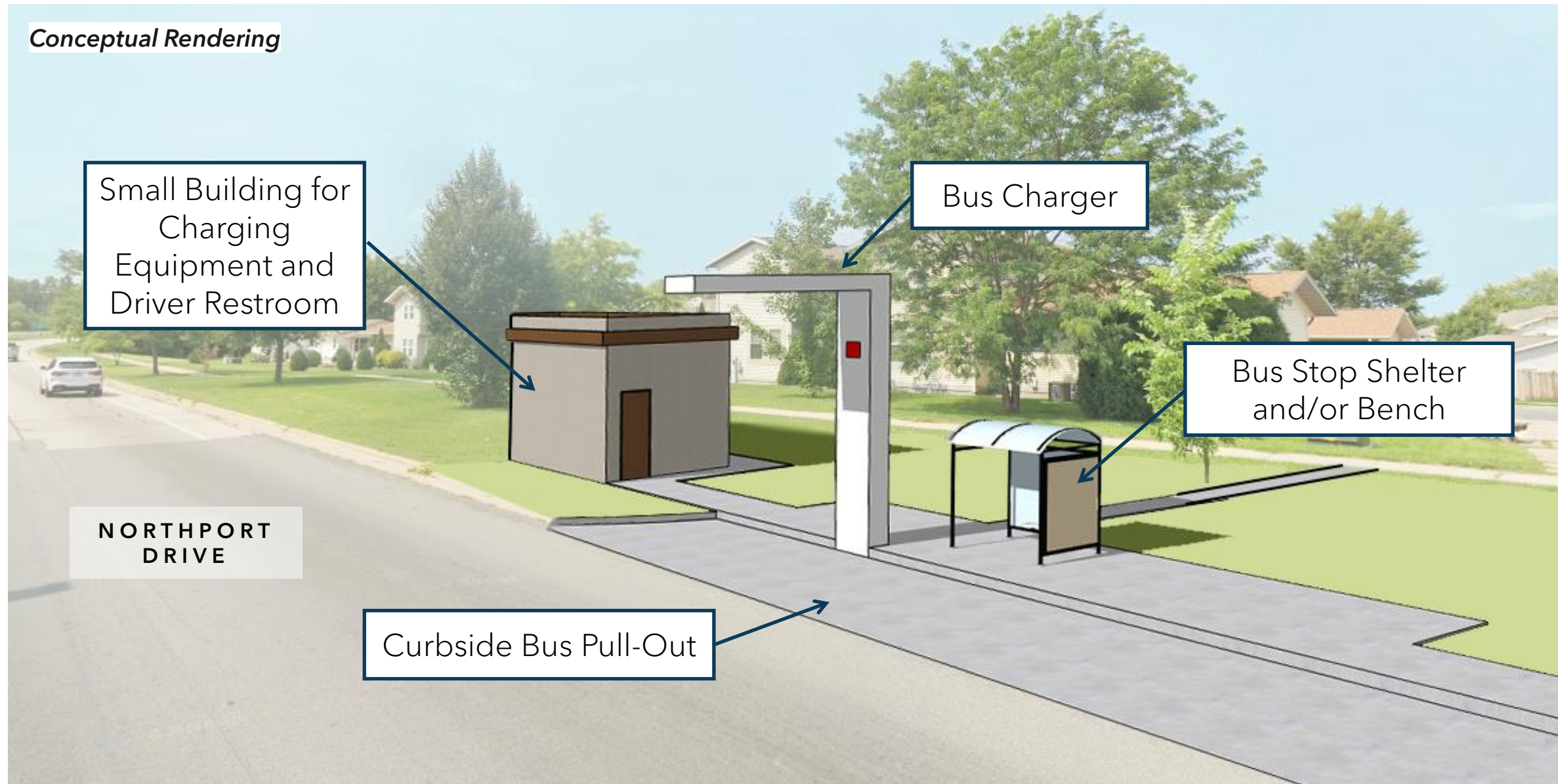




6

Proposed Charger Location

Conceptual Rendering





7

Proposed Service Changes





Route B Service Changes

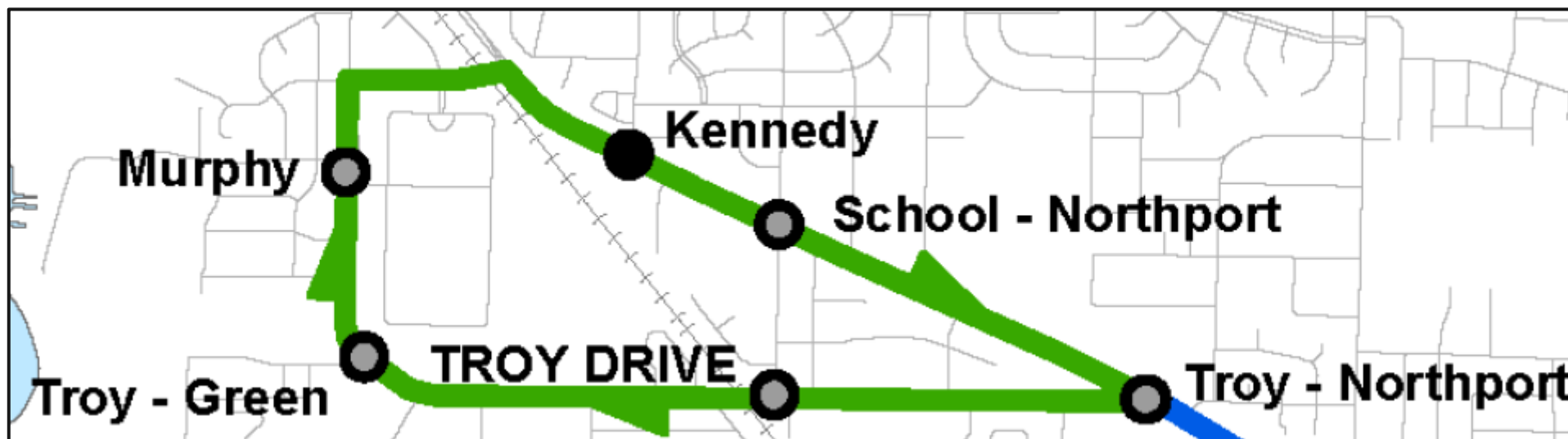
- Troy-Northport loop reversed to counter-clockwise
- Terminal moved to Northport and Kennedy
- Route moved from Central Wisconsin Center to public streets
- Bus stops on the inside of the loop closed
- New bus stops created on the outside of the loop



9

North-South BRT

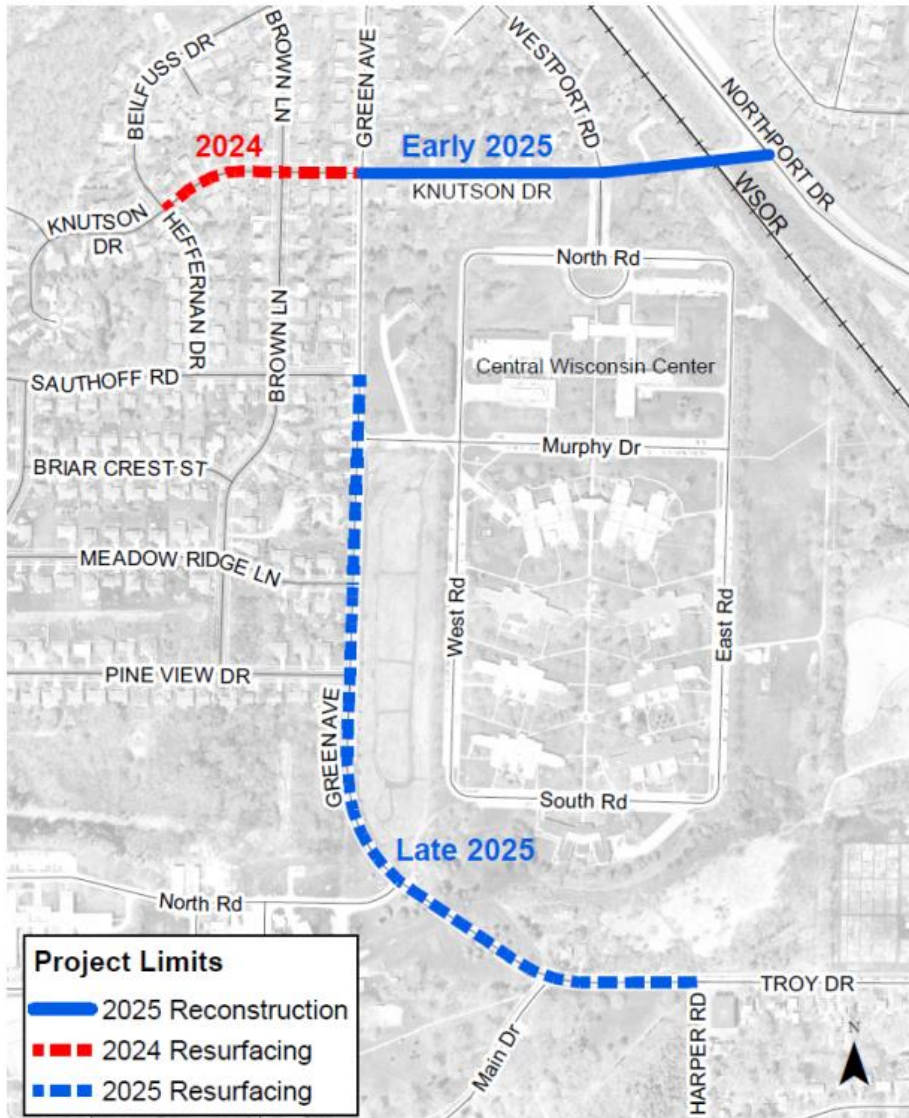
- Separate from North-South BRT
- No BRT stations or bus lanes built with this project
- Consistent with Locally Preferred Alternative
- Except – showing route going clockwise
- Charger will be used by North-South BRT





10

Knutson Drive Reconstruction and Green Ave Resurfacing (2025)

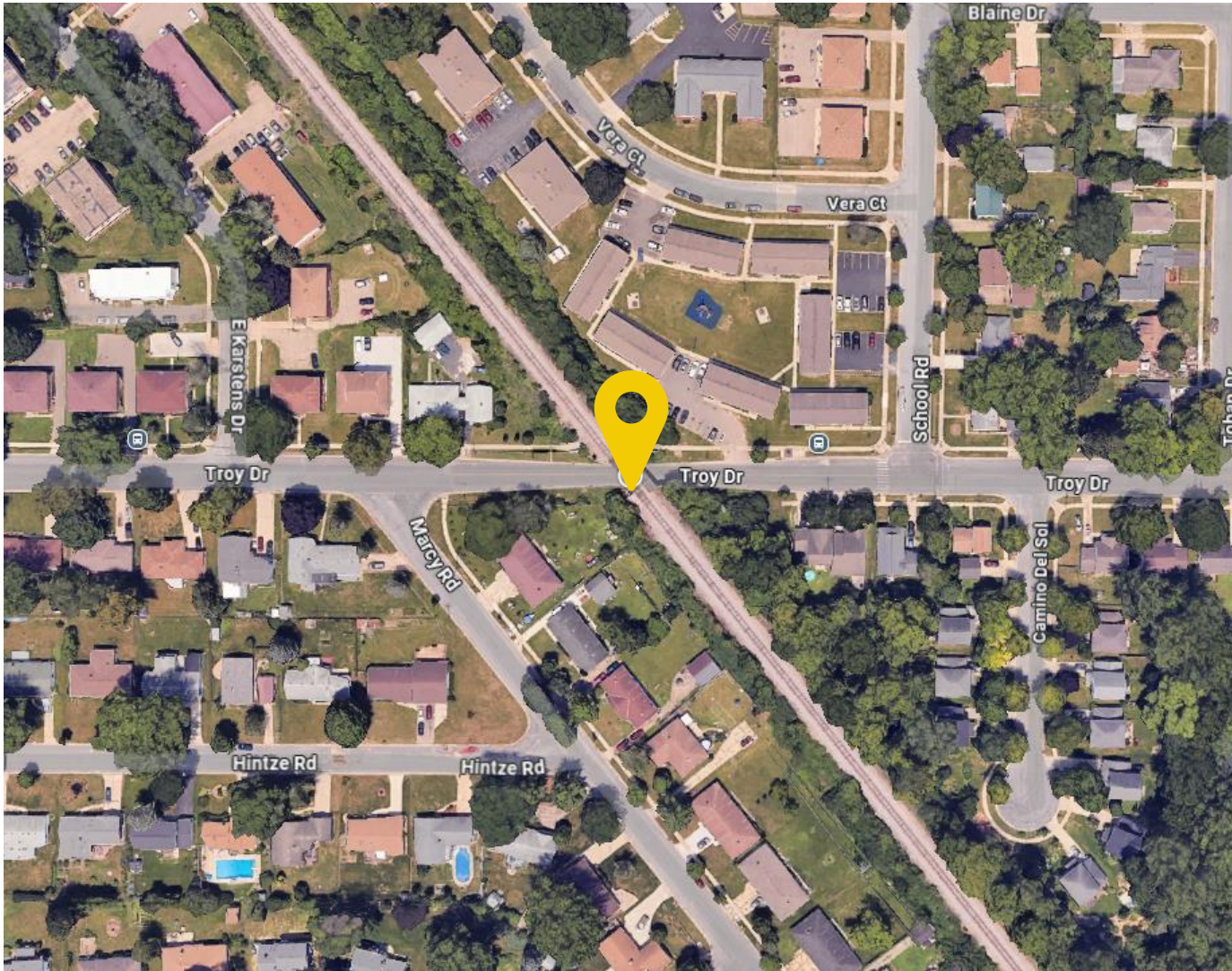


<https://www.cityofmadison.com/engineering/projects/knutson-drive-reconstruction>



11

Troy Drive Railroad Bridge



<https://www.cityofmadison.com/engineering/projects/troy-drive-railroad-bridge>

Construction: Expected 2025/2026



LEARN MORE + CONTACT US

mymetrobus.com

mymetrobus@cityofmadison.com

608-266-4466

