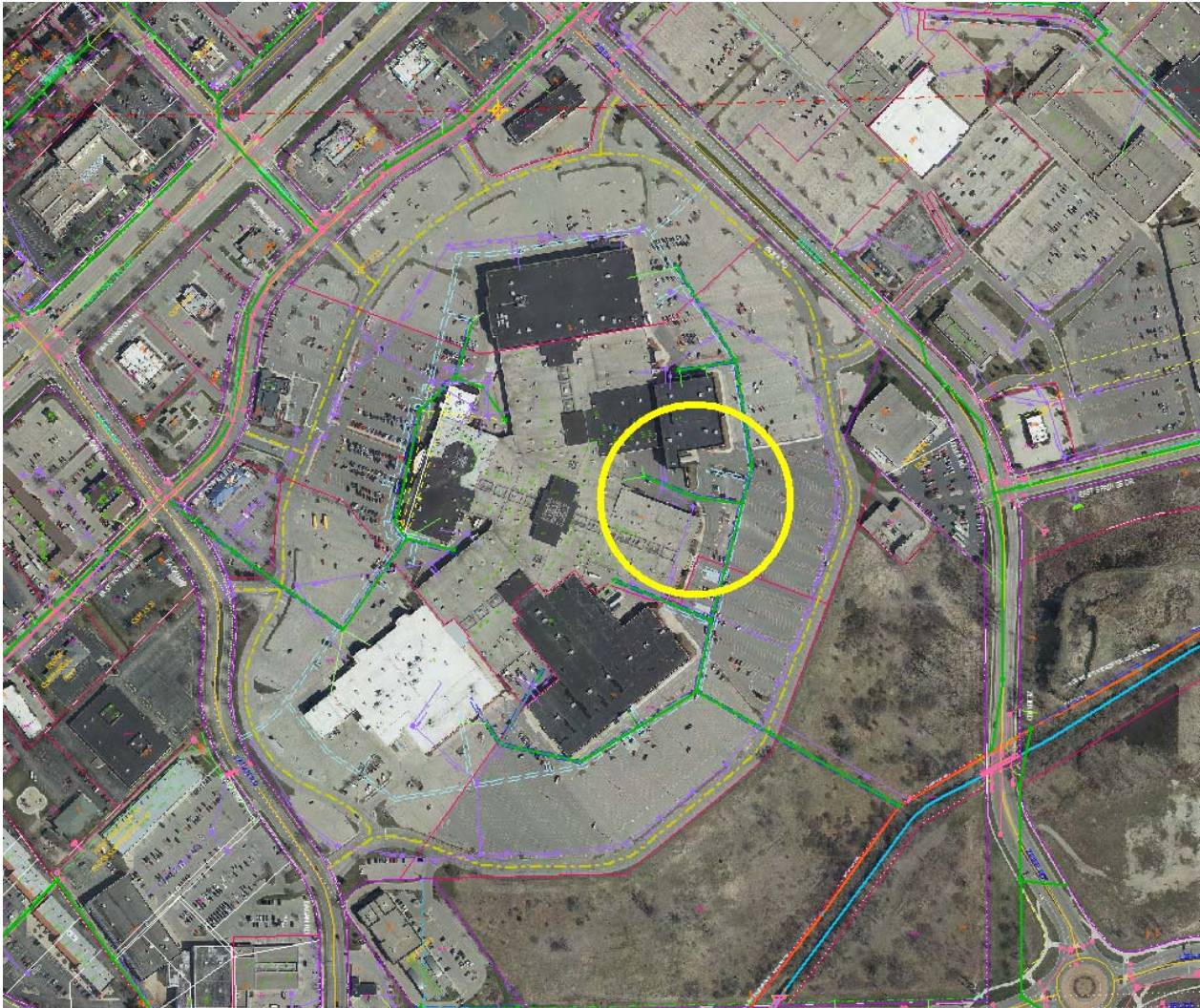


89 EAST TOWNE MALL – FLIX BREWHOUSE



LEGEND

- PROPERTY LINE
- - - EASEMENT LINE
- ST --- PROPOSED STORM SEWER
- SAN --- PROPOSED SANITARY SEWER
- W --- PROPOSED WATER MAIN
- G --- PROPOSED GAS SERVICE (DESIGN BY UTILITY)
- E --- PROPOSED ELECTRIC SERVICE (DESIGN BY UTILITY)
- ST --- EXISTING STORM SEWER
- SAN --- EXISTING SANITARY SEWER
- W --- EXISTING WATER MAIN
- G --- EXISTING GAS SERVICE
- E --- EXISTING ELECTRIC SERVICE
- X X X X SAWCUT
- RESTORED ASPHALT
- PROPOSED CONCRETE
- LANDSCAPE AREA
- FIRE HYDRANT LOCATION
- INLET PROTECTION
- SPOT ELEVATION
 EP - EDGE OF PAVEMENT
 FG - FINISH GRADE
 EC - EDGE OF CONCRETE
 TS - TOP OF STEP
 BS - BOTTOM OF STEP
 RIM - RIM ELEVATION

CONNECT TO EXISTING SANITARY MANHOLE:
 RIM: 873.4±
 INV (NW): 865.65
 INV (E): 865.54
 INV (SE): 865.54 CONTRACTOR TO PLUG AND ABANDON
 INV (SW): 865.76

GREASE TRAP SIZE TO BE CONFIRMED BY PLUMBING ENGINEER (5000 GALLON SHOWN)

PROPOSED GREASE SERVICE
 60 LF-4" PVC @ 2.08%
 PROPOSED SANITARY CLEAN-OUT:
 RIM: 873.8±
 INV: 866.74

2.5" GAS LINE SERVICE CONNECTION TO BE COORDINATED WITH PRIVATE UTILITY COMPANY
 CONNECT TO EXISTING 8" WATERMAIN WITH 45° BEND
 REFER TO PLUMBING PLANS FOR CONTINUATION:
 INV: 867.23
 6.65' BELOW FFE

WYE CONNECTION:
 INV: 865.34

PROPOSED SANITARY MANHOLE:
 RIM: 873.1±
 INV (E): 865.14
 INV (W): 865.24

PROPOSED STORM MANHOLE, TIE INTO DICKS SPORTING GOODS EXISTING 12" PVC PIPE.
 RIM: 873.4±
 INV (N): 868.52
 INV (E): 868.42

STEINHAFELS TWO-STORY MASONRY BUILDING

PROPOSED BUILDING FOOTPRINT

FFE=873.88 (TO MATCH INTERIOR FFE OF MALL)

DICKS SPORTING GOODS TWO-STORY MASONRY BUILDING

- 22 LF 10" D.I. TO CONNECT TO DICK'S SPORTING GOODS PRIVATE WATER SERVICE
- 30 LF 6" D.I. FIRE SYSTEM SERVICE WITH METER
- 5 LF 4" D.I. WATER SERVICE WITH METER FOLLOWED BY 4"X3" REDUCER AND 20 LF OF DOMESTIC COPPER SERVICE
- 27 LF 6" PVC @ 2.08% SANITARY SERVICE CONNECTION

PROPOSED SANITARY MANHOLE:
 RIM: 873.9±
 INV (E): 864.66
 INV (SW): 864.76
 INV (W): 864.76

PROPOSED STORM MANHOLE:
 RIM: 873.8±
 INV (E): 867.84
 INV (W): 867.94

REMOVE AND RELOCATE EXISTING HYDRANT & VALVE. CONTRACTOR TO CONTACT MADISON WATER UTILITY PRIOR TO REMOVAL.

INLET PROTECTION (6) TYP. (C203)

PROPOSED STORM MANHOLE:
 RIM: 872.6±
 INV (S): 867.36
 INV (W): 867.46

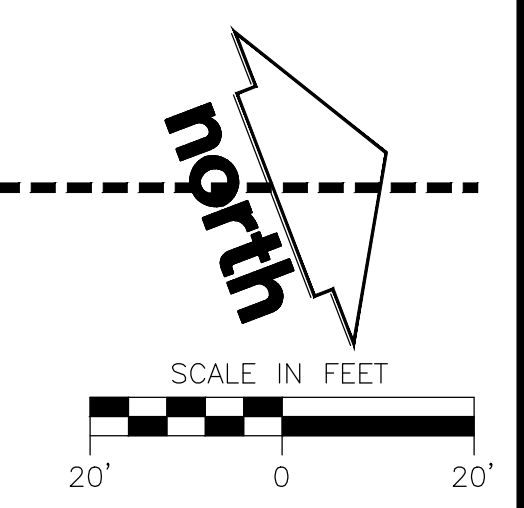
REMOVE EXISTING WATER CONNECTION TO EXISTING HYDRANT LOCATION

RELOCATE TO NEW HYDRANT & VALVE LOCATION

PROPOSED SANITARY MANHOLE:
 RIM: 871.6±
 INV (N): 864.01
 INV (S): 864.01
 INV (W): 864.11

MATCHLINE - SHEET C301

PRELIMINARY NOT FOR CONSTRUCTION



JSD Professional Services, Inc.
 • Engineers • Surveyors • Planners

"BUILDING RELATIONSHIPS WITH A COMMITMENT TO CLIENT SATISFACTION THROUGH TRUST, QUALITY AND EXPERIENCE"

- CIVIL ENGINEERING
- SURVEYING & MAPPING
- CONSTRUCTION SERVICES
- WATER RESOURCES
- PLANNING & DEVELOPMENT
- TRANSPORTATION ENGINEERING
- STRUCTURAL ENGINEERING
- LANDSCAPE ARCHITECTURE

MADISON REGIONAL OFFICE
 161 HORIZON DRIVE, SUITE 101
 VERONA, WISCONSIN 53593
 608.848.5060 PHONE | 608.848.2255 FAX

MADISON | MILWAUKEE
 KENOSHA | APPLETON | WAUSAU

www.jsdinc.com

SERVICES PROVIDED TO:
CBL & ASSOCIATES PROPERTIES, INC.

PROJECT:
FLIX BREWHOUSE - 85 EAST TOWNE MALL

PROJECT LOCATION:
 CITY OF MADISON
 DANE COUNTY, WI

JSD PROJECT NO.: 15-7078

SEAL/SIGNATURE:

ALTHOUGH EVERY EFFORT HAS BEEN MADE IN PREPARING THESE PLANS AND CHECKING THEM FOR ACCURACY, THE CONTRACTOR AND SUBCONTRACTORS MUST CHECK ALL DETAIL AND DIMENSIONS OF THEIR TRADE AND BE RESPONSIBLE FOR THE SAME.

DESIGN:	JRK	02-10-17
DRAWN:	JRK	02-10-17
APPROVED:	JLF	02-10-17

PLAN MODIFICATIONS:	DATE:
LANDUSE AND UDC FINAL SUBMITTAL	08-17-16
SITE PLAN VERIFICATION SUBMITTAL	02-10-17

DIGGERS HOTLINE

Toll Free (800) 242-8511
 Milwaukee Area (414) 259-1181
 Hearing Impaired TDD (800) 542-2289
www.DiggersHotline.com

SHEET TITLE:
GRADING AND UTILITY PLAN

SHEET NUMBER:
C300

File: I:\2015\157078\DWG\15-7078 Construction Documents.dwg Layout: C300 Grading and Utility User: kasperzak Plotter: Feb 23, 2017 - 7:57am Xref's:

THESE PLANS AND DESIGNS ARE COPYRIGHT PROTECTED AND MAY NOT BE USED IN WHOLE OR IN PART WITHOUT THE WRITTEN CONSENT OF JSD PROFESSIONAL SERVICES, INC.