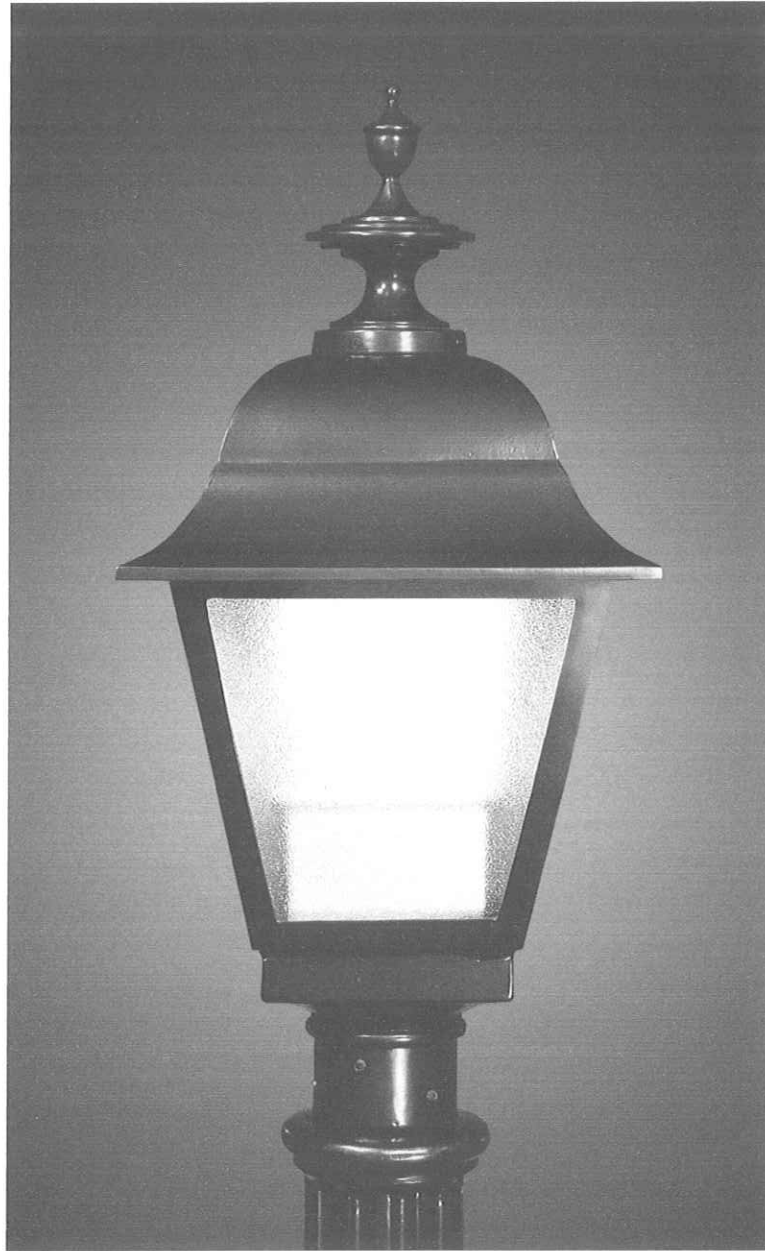


## TR25 Luminaires



TR25

Passout #3 6-30-10

A

### SPECIFICATIONS

#### DESCRIPTION

The traditionally square shaped luminaire shall consist of a luminaire base with an integral ballast housing, a four sided lens frame, four lens panels, a roof, and a finial.

#### DIMENSIONS

Fixture dimensions shall be as detailed on back page.

#### MATERIALS

The luminaire base, ballast housing, frame assembly, roof, and finial shall be heavy wall, copper free, cast aluminum produced from certified ASTM 356.1 ingot per ASTM B-179-95A or ASTM B26-95, formed true to the pattern with complete detail. Lens panels shall be smooth, textured, or prismatic. Lenses are available in clear polycarbonate or clear acrylic. Internal refractors shall be borosilicate glass and reflectors shall be polished aluminum. All hardware shall be stainless steel. All exterior hardware shall be tamper resistant.

#### INSTALLATION

The luminaire shall mount on a 3" O.D. x 3" tenon with six 1/4" dia. socket set screws. The ballast and socket assembly shall be furnished with a quick disconnect plug and mount on a removable ballast plate.

#### FINISH

For finish specifications and color options see "Finish" section in catalog.

#### LIGHT SOURCE

Luminaires shall be furnished with an H.I.D. ballast and socket assembly. Luminaire shall be UL listed and labeled as suitable for wet locations. Sockets shall be glazed porcelain medium base, with a copper alloy nickel plated screw shell and center contact. Ballast shall be core and coil, high power factor, regulating type.

#### CERTIFICATION

Upon request, manufacturer shall certify the use of 356.1 ingot alloy. Upon request, manufacturer shall supply UL file# and listing information.

## ANTIQUE Street Lamps

2011-B W. Rundberg Ln. • Austin, TX 78758  
Ph (512) 977-8444 • Fax (512) 977-9622

# WinonaLED

## STEP03 12 inch

Type: **B**

Qty:

Project Name:

Ref#:

**STEP03 12 inch** is a surface mount step light with a concealed optic and 12 inch wide aperture. Eight LED colors are available in normal output configurations.

**Distribution:** One light distribution pattern available.

**Long:** For large area illumination.

**Construction:** Extruded aluminum LED module with solid aluminum, brass, or stainless steel face plates.

**Mounting:** Luminaire is mounted to a standard multi-gang switch box (supplied by others) with four fasteners. Steel City H6BD or equivalent (by others) recommended.

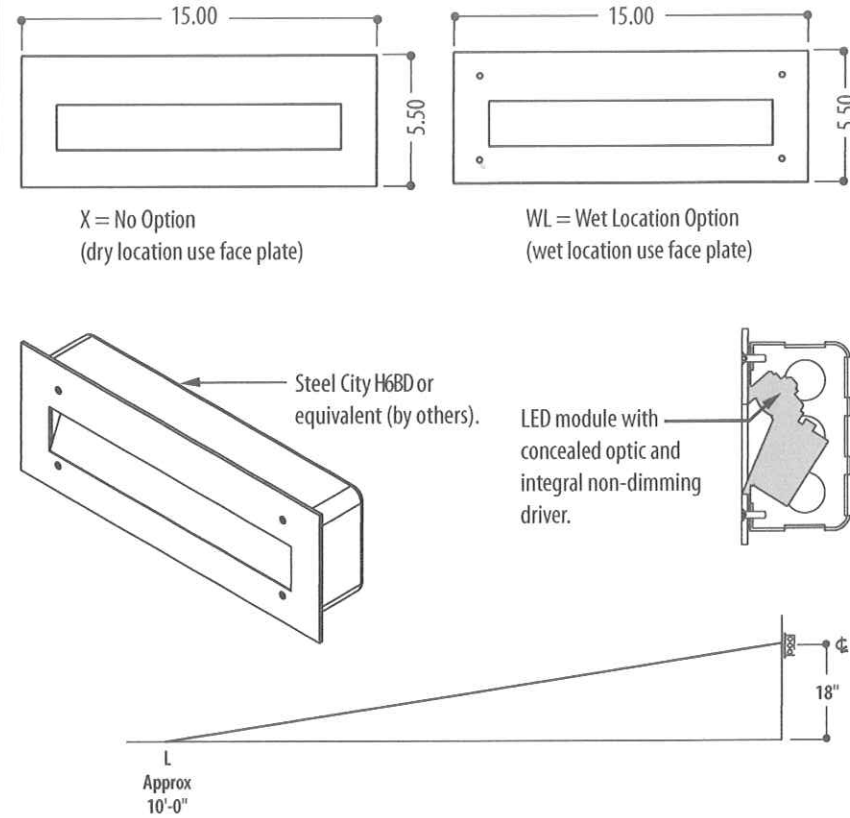
**Integral Driver:** Integral non-dimming drivers available for 90-250V AC and 12V AC. Dimmable driver 12V-40V DC only.

**Finish:** Recessed areas always have matte black finish to reduce glare. Face plates in *natural metal finishes*, except stainless steel, have protective clear top coat. Face plates in *painted* are finished with a two part wet paint system. Primer only option allows for field painting.

**Dimming:** True 0-100% dimming is available with exclusive LightLink dimming system interface which is compatible with both 0V-10V sink and source-type dimmers.

**Power Consumption:** Luminaire consumes maximum of 24W depending on LED color.

**UL Listed:** Dry Location, Wet Location optional



### LED - STEP03 - 12 - L - 002/HO - ND120V - AB5 - WL - STD

SOURCE MOUNT SIZE DISTRIBUTION LED CODE VOLTAGE FINISH OPTIONS SPECIAL

MOUNT:  
STEP03 = STEP LIGHT

DISTRIBUTION:  
L = LONG

SIZE:  
12 = 12 INCH

See individual drawing for these other options:

3 = 3 INCH  
6 = 6 INCH  
9 = 9 INCH

CODE	COLOR	OUTPUT
001/HO	WARM WHITE 3000K	HIGH
002/HO	COOL WHITE 6200K	HIGH
003/HO	AMBER	HIGH
004/HO	BLUE	HIGH
005/HO	CYAN	HIGH
006/HO	GREEN	HIGH
007/HO	RED-ORANGE	HIGH
008/HO	RED	HIGH

\*IES report available for high output. (See website)

VOLTAGE:  
Non-Dimming  
ND120V = 90V-250VAC  
ND12V = 12VAC

Dimming  
DM24V = 12V-40VDC\*  
\*LightLink dimming system interface maximum fifty luminaires per LightLink, one LightLink per dimming zone.

FINISH:

*Natural Metal Finishes*  
AB5 = ANTIQUE BRASS  
BAL = BRUSHED ALUMINUM  
BB = BRUSHED BRASS  
BSS = BRUSHED STAINLESS STEEL  
CMF = CUSTOM METAL FINISH  
PB = POLISHED BRASS  
PSS = POLISHED STAINLESS STEEL

*Painted*  
CPF = CUSTOM PAINTED FINISH  
LBPS = LIGHT BRONZE PAINT SMOOTH  
PRM = PRIMER ONLY  
SGB = SEMI-GLOSS BLACK  
SGW = SEMI-GLOSS WHITE

OPTIONS:  
X = NO OPTIONS  
WL = WET LOCATION  
EM = EMERGENCY BACK-UP  
(consult factory)

SPECIAL:  
STD = STANDARD  
MOD = MODIFIED

MODIFICATIONS:  
Please use this space to list any modifications.

UL LISTED



Revised: 5/8/08

winona  
lighting

Winona Lighting | 3760 West Fourth Street | Winona, MN 55987 | 800-328-5291 | www.winonalighting.com

**FEATURES & SPECIFICATIONS**

**INTENDED USE**

For entrances, stairwells, corridors and other pedestrian areas.

**CONSTRUCTION**

Rear housing is rugged, corrosion-resistant, die-cast aluminum. Front cover is one-piece UV-resistant injection molded polycarbonate, internally painted. Captive external hardware is specially treated for corrosion resistance and includes slotted hex-head and tamperproof fasteners.

**FINISH**

Dark bronze (DDB) corrosion-resistant polyester powder.

**OPTICAL SYSTEM**

One-piece die-formed reflector is diffused aluminum. Refractor is clear UV stabilized polycarbonate, providing **IES cutoff** distribution and maximum lateral light output. Front cover is sealed and gasketed to inhibit the entrance of outside contaminants.

**ELECTRICAL SYSTEM**

Metal halide ballasts are high reactance, high power factor. HPS ballasts are reactor normal power factor. All HID ballasts are 100% factory tested and UL listed. Porcelain, horizontally oriented medium-base socket with copper alloy, nickel-plated screw shell and center contact. UL listed 660W, 600V and 4kV pulse rated.

Compact fluorescent ballasts are multi-volt (120-277) electronic high power factor (26DTT, 26TRT, 32TRT and 42TRT) (Requires 4-pin lamp). UL Listed. Four-pin (26DTT, 26TRT, 32TRT and 42TRT) positive latching thermoplastic socket.

All components are heat-sinked directly to the cast housing for maximum heat dissipation.

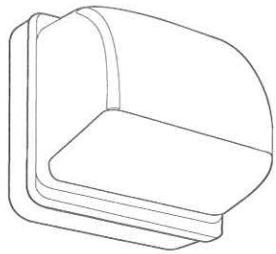
**INSTALLATION**

Mount to any vertical surface or to a 4" round square outlet box. Back access through gasketed slot. Top wiring access through 1/2" threaded conduit entry. (Through-wiring requires use of a conduit tee).

**LISTING**

UL listed for wet locations. IP65 rated. UL Listed to US and Canadian safety standards (see Options). NOM Certified.

Catalog Number	
Notes	Type <b>C</b>



**Cutoff Mini Wall-Packs**

**TWAC**

**METAL HALIDE: 50-100W**  
**HIGH PRESSURE SODIUM: 35-100W**  
**COMPACT FLUORESCENT: 26- 42TRT**

**Specifications**

Height:	10" (25.4cm)
Width:	11-1/2" (29.2cm)
Depth:	8-15/16" (22.7cm)
Weight:	10 lbs. (4.53kg)

**ORDERING INFORMATION**

For shortest lead times, configure product using **standard options (shown in bold)**.

Example: TWAC 50M 120 LPI

TWAC		SF - XHP		Lamp	
Series	Wattage	Options		LPI	Lamp included (standard)
<b>TWAC</b>	<b>Metal halide</b>	<b>120</b>	Shipped installed in fixture	<b>LPI</b>	<b>Lamp included (standard)</b>
	<b>50M</b>	SF Single fuse (120, 277, 347V) <sup>6</sup>	<b>CSA Listed and labeled to comply with Canadian Standards</b>	<b>L/LP</b>	<b>Less lamp</b>
	<b>70M</b>	DF Double fuse (208, 240V) <sup>6</sup>	NOM NOM Certified (consult factory)		
	<b>100M</b>	GMF Internal slow-blow fusing <sup>5</sup>	PE Photocell <sup>10</sup>		
	<b>High pressure sodium</b>	XHP High power factor ballast <sup>7</sup>	<b>Architectural colors (optional)</b>		
	35S	EC Emergency circuit <sup>8</sup>	(blank) <b>Dark bronze</b>		
	50S	DC12 Emergency circuit 12 volt (35W lamp included std.) <sup>9</sup>	DNA Natural aluminum		
	70S	DC2012 Emergency circuit 12 volt (20W lamp included) <sup>9</sup>	DBL Black		
	<b>100S</b>	2DC12 Emergency circuit 12 volt (2 35W lamps included std.) <sup>9</sup>	DMB Medium bronze		
	<b>Compact fluorescent<sup>1</sup></b>	2DC2012 Emergency circuit 12 volt (2 20W lamps included) <sup>9</sup>	DWH White		
	26DTT	QRS Quartz restrike system <sup>8</sup>	DSS Sandstone		
	26TRT		CR Enhanced corrosion-resistance		
	32TRT		CRT Non-stick protective coating <sup>11</sup>		
	<b>42TRT</b>				

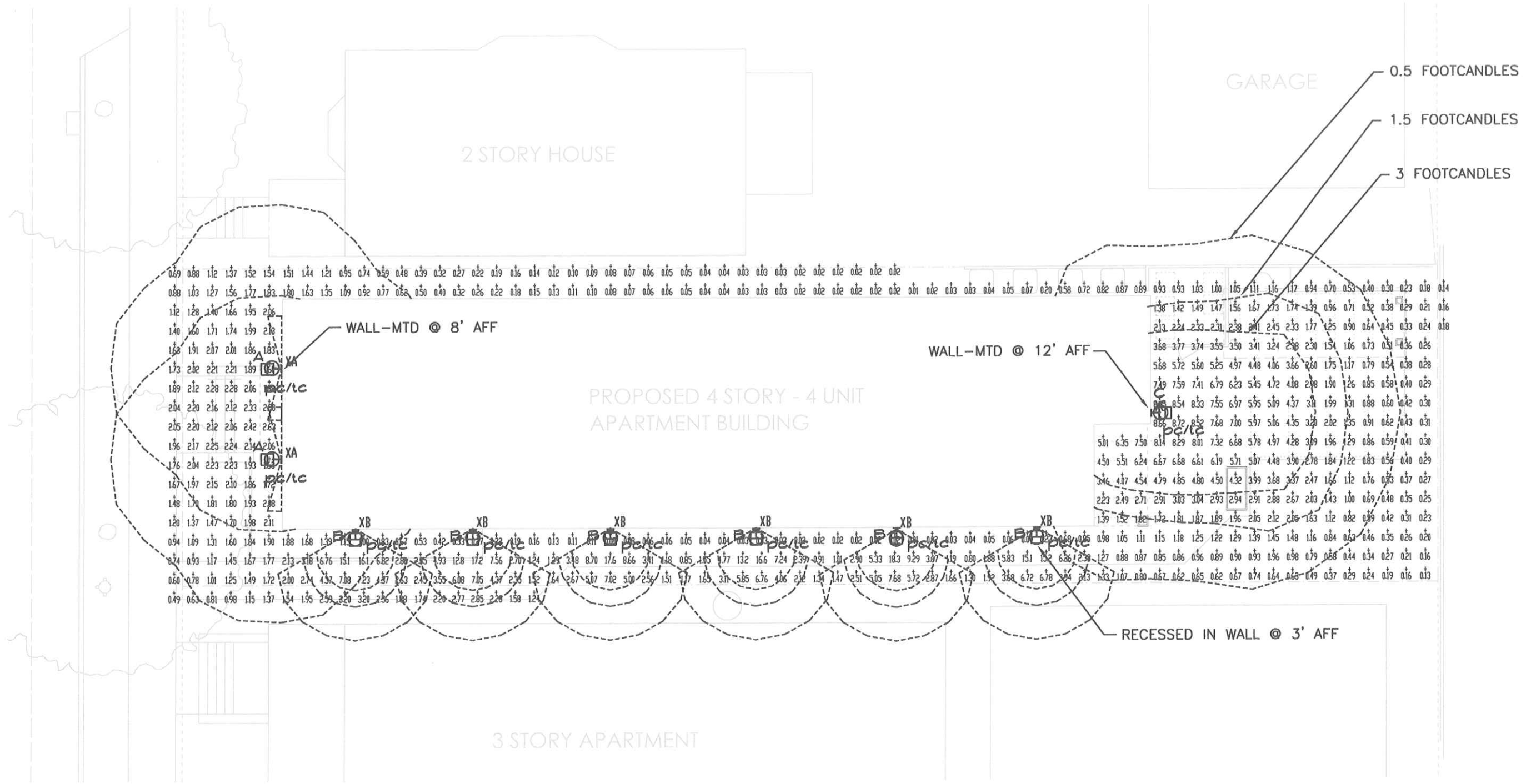
NOTES:  
 1 Compact fluorescent sources only available with 120, 277 or MVOLT.  
 2 Consult factory for availability in Canada.  
 3 Optional multi-tap ballast (120,208,240,277V) In Canada 120, 277, 347V; ships as 120/347.  
 4 Only available with HID sources.  
 5 Only available with compact fluorescent sources.  
 6 Not available with multi-tap ballast or compact fluorescent sources.  
 7 Only available with 50S or 70S, 120V.  
 8 Maximum allowable wattage lamp included.  
 9 Not available with QRS, EC or NOM.  
 10 Not available with 347V or 480V.  
 11 Black finish on housing only.

**Accessories**

Order as separate catalog number

RK1 PEB1	Photocell kit (120V only)
RK1 PEB1 CSA	Photocell kit (120V only)
RK1 PEB2	Photocell kit (208, 240 or 277V)
TWAWG	Wireguard

Drawing name: W:\ARCHITECT\Ferch\431 W Dayton\Elec\SL1.dwg  
 Plotted on: Jun 29, 2010 - 4:56pm



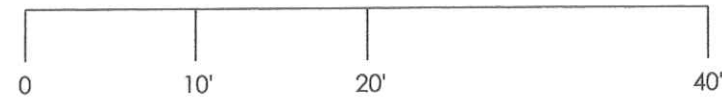
DXF file created by LitePro 2024 on 6/29/2010 3:34:09 PM

CALCULATION SUMMARY										
AREA NAME	DIMENSIONS	GRID / TYPE	# PTS	SPAC	GROUP	AVE	MAX	MIN	MAX/MIN	AVE/MIN
Areal	151.40x66.70ft	Ground Grid / H-H	597	2.00	(+)	2.22	18.34	0.01	1232.9	149.49

4 31 Dayton LUMINAIRE SCHEDULE						
TYP	SYMBOL	DESCRIPTION	LAMP	LUMENS	MOUNTING/BALLAST	LLF QTY
A	☐-H	Antique Street Lamps TR25	70 MH	5500		0.80 2
B	☐-H	WINONA LIGHTING LED-STEP03-12-L	LED	24		0.50 6
C	☐-H	Lithonia Lighting TVAC	MP100/U/MED	8500		0.90 1



SITE LIGHTING PLAN - GROUND



CONSULTING ENGINEERS:  
**HEIN Engineering Group**  
 514 W. BELTLINE HWY, SUITE III  
 MADISON, WI 53715  
 Phone: (608) 288-4260  
 Fax: (608) 288-4282  
 E-Mail: hein@heingroup.net

PROJECT  
**4 UNIT APARTMENT**  
 431 W. Dayton Street, Madison, WI

ARCHITECT  
 DAVID FERCH,  
 ARCHITECTS  
 2704 Gregory Street,  
 Madison, WI 53711  
 608.238.6900 FAX: 608.233.9171

No.	Date	Revision

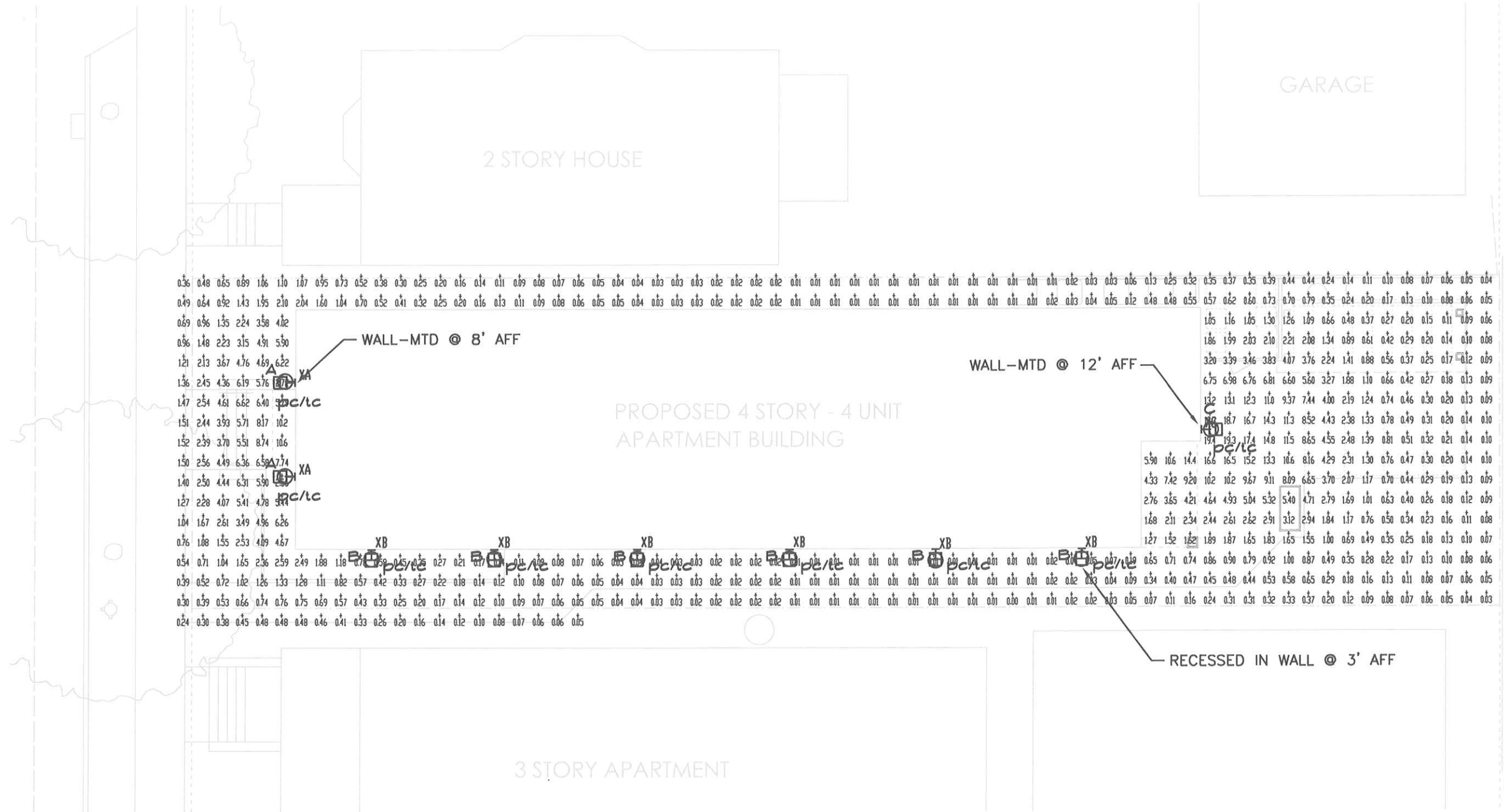
JOB NO  
 01011 6/29/2010

Project No.  
 = SHEET NO.

Date

**SL1**

Drawing name: W:\ARCHITEC\Ferch\431 W Dayton\Elec\SL1.dwg Plotted on: Jun 29, 2010 - 4:56pm

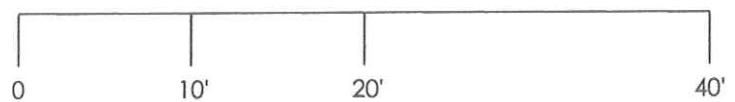


CALCULATION SUMMARY										
AREA NAME	DIMENSIONS	GRID / TYPE	# PTS	SPAC	GROUP	AVE	MAX	MIN	MAX/MIN	AVE/MIN
Areal	151.46x66.78' ±	Tresp Grid / H-H	625	2.00	(*)	1.68	19.44	0.00	3892.6	337.13

4.31 Dayton LUMINAIRE SCHEDULE						
TYP	SYMBOL	DESCRIPTION	LAMP	LUMENS	MOUNTING/BALLAST	LLF QTY
A		Antique Street Lamps TR25	70 MH	5500		0.80 2
B		WINDOW LIGHTING LED-STEP03-12-L	LED	24		0.50 6
C		Lithonia Lighting TVAC	NP100/U/NEO	8500		0.90 1



SITE LIGHTING PLAN - TRESSPASS



CONSULTING ENGINEERS:  
**HEIN Engineering Group**  
 514 W. BELTLINE HWY, SUITE III  
 MADISON, WI 53713  
 Phone: (608) 288-4260  
 Fax: (608) 288-4282  
 E-Mail: hein@chorus.net

PROJECT  
**4 UNIT APARTMENT**  
 431 W. Dayton Street, Madison, WI

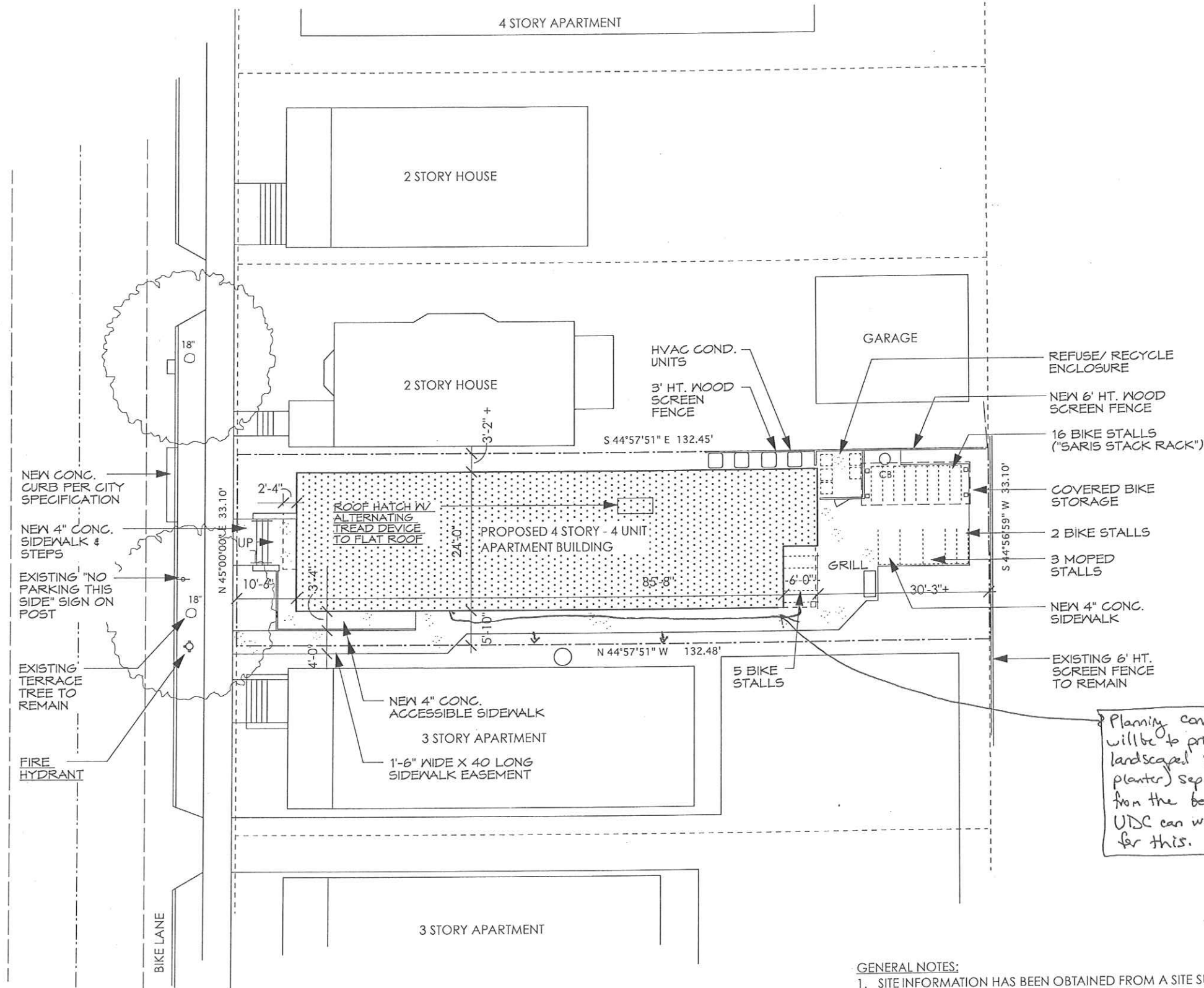
ARCHITECT  
**DAVID FERCH,**  
 ARCHITECTS  
 2734 Gregory Street,  
 Madison, WI 53711  
 608.238.4900 FAX 608.233.9171

No.	Date	Revision

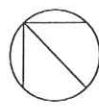
JOB NO  
 01011  
 6/29/2010  
 Project No.  
 - SHEET NO.  
**SL2**



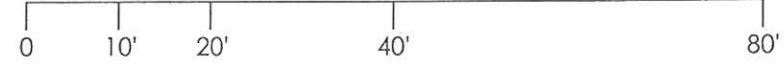
WEST DAYTON STREET



Planning condition of approval will be to provide narrow landscaped strip (or structured planter) separating the sidewalk from the bedroom windows. UDC can weigh in with recommendations for this.



SITE PLAN



- GENERAL NOTES:**
1. SITE INFORMATION HAS BEEN OBTAINED FROM A SITE SURVEY PREPARED BY WILLIAMSON SURVEYING & ASSOCIATES, LLC. DATED 3/10/10.
  2. THE GENERAL CONTRACTOR SHALL VERIFY THE EXACT LOCATION OF ALL UTILITIES PRIOR TO THE START OF ANY EXCAVATION WORK. REPORT ANY AND ALL DISCREPANCIES OF THE ARCHITECT. CONTACT DIGGERS HOTLINE, 800 242-8511.

#3 Comments by Stouder

PROJECT	4 UNIT APARTMENT	ARCHITECT	DAVID FERCH, ARCHITECTS	No. Date Revision	6/22/2010	DATE	4/26/2010
	431 W. Dayton Street, Madison, WI		2704 Gregory Street, Madison, WI 53711			Project Number	
			608.238.6900 FAX 608.233.9171			SHEET NUMBER	3