

# SUMMIT CREDIT UNION DOWNTOWN BRANCH ALTERATIONS

UDC INITIAL / FINAL SUBMITTAL

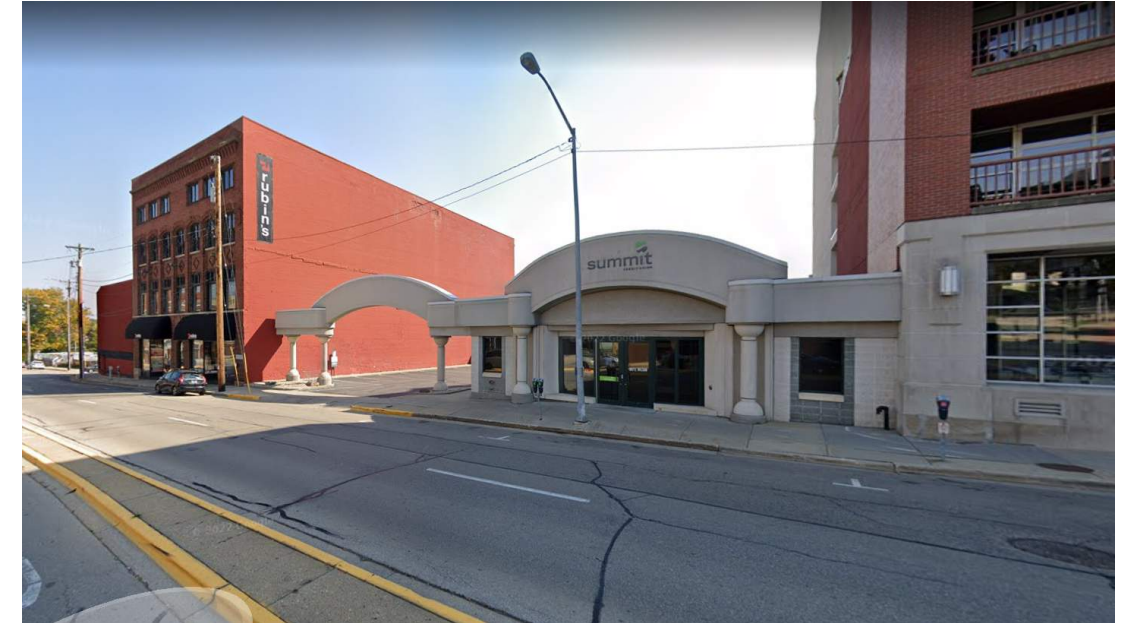




# SITE CONTEXT



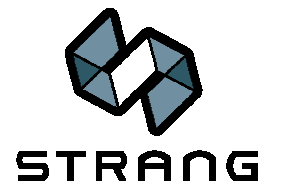
AERIAL IMAGE OF DOWNTOWN MADISON LOOKING WEST



EXISTING WILSON ST. FACADE



EXISTING JOHN NOLEN BLVD. FACADE





# PROPOSED DESIGN



PROPOSED WILSON ST. FACADE



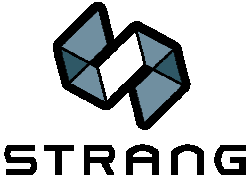
EXISTING WILSON ST. FACADE



PROPOSED JOHN NOLEN BLVD FACADE

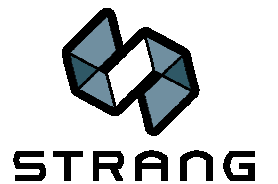
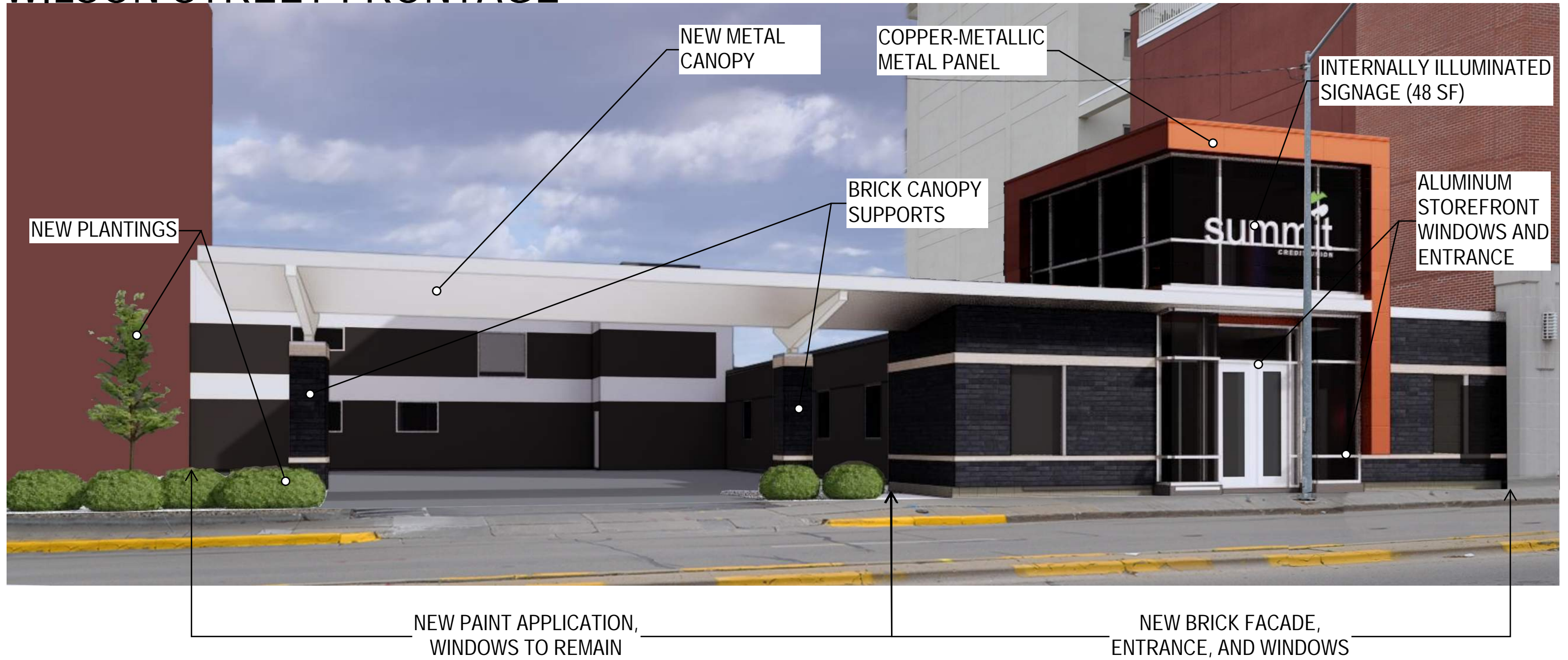


EXISTING JOHN NOLEN BLVD. FACADE

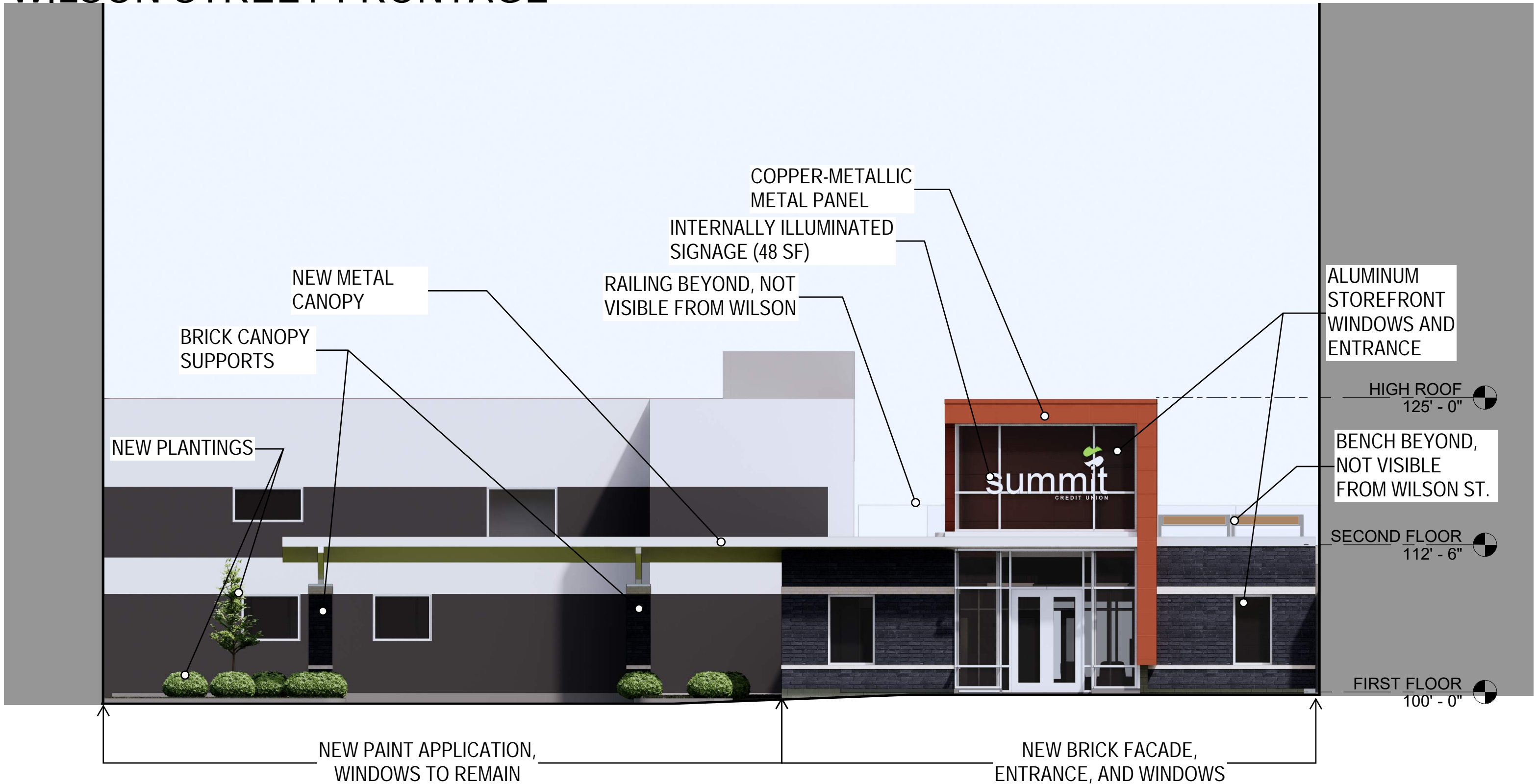




# WILSON STREET FRONTAGE



# WILSON STREET FRONTAGE



NORTHWEST ELEVATION 1/8" = 1'-0"





# JOHN NOLEN FRONTAGE

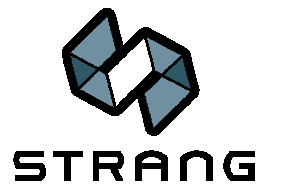


COPPER-METALLIC METAL PANEL

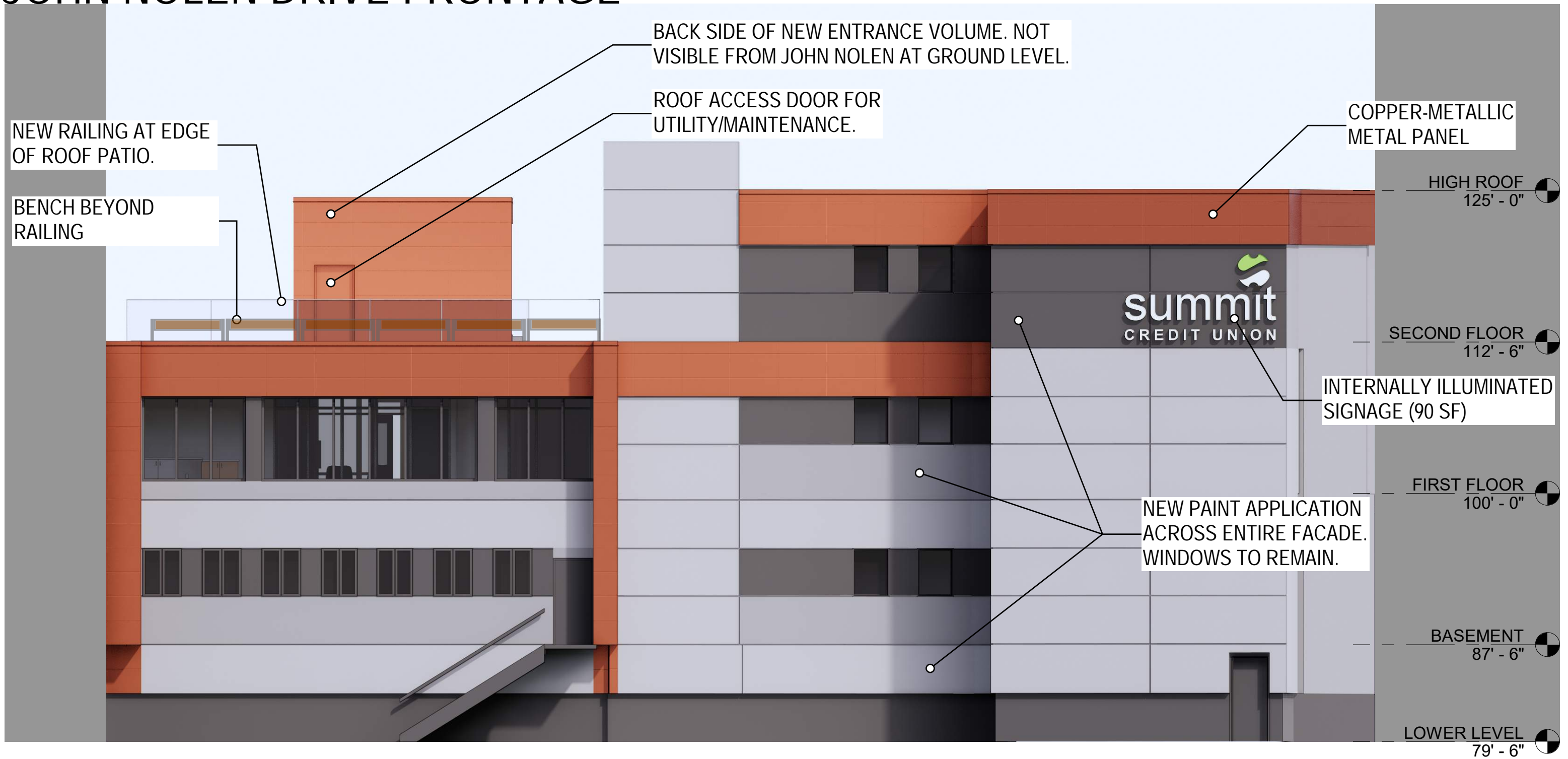
NEW RAILING AT EDGE OF ROOF PATIO.

INTERNALLY ILLUMINATED SIGNAGE (90 SF)

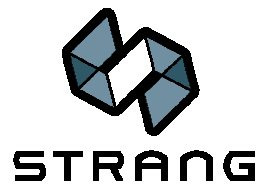
NEW PAINT APPLICATION ACROSS ENTIRE FACADE, WINDOWS TO REMAIN



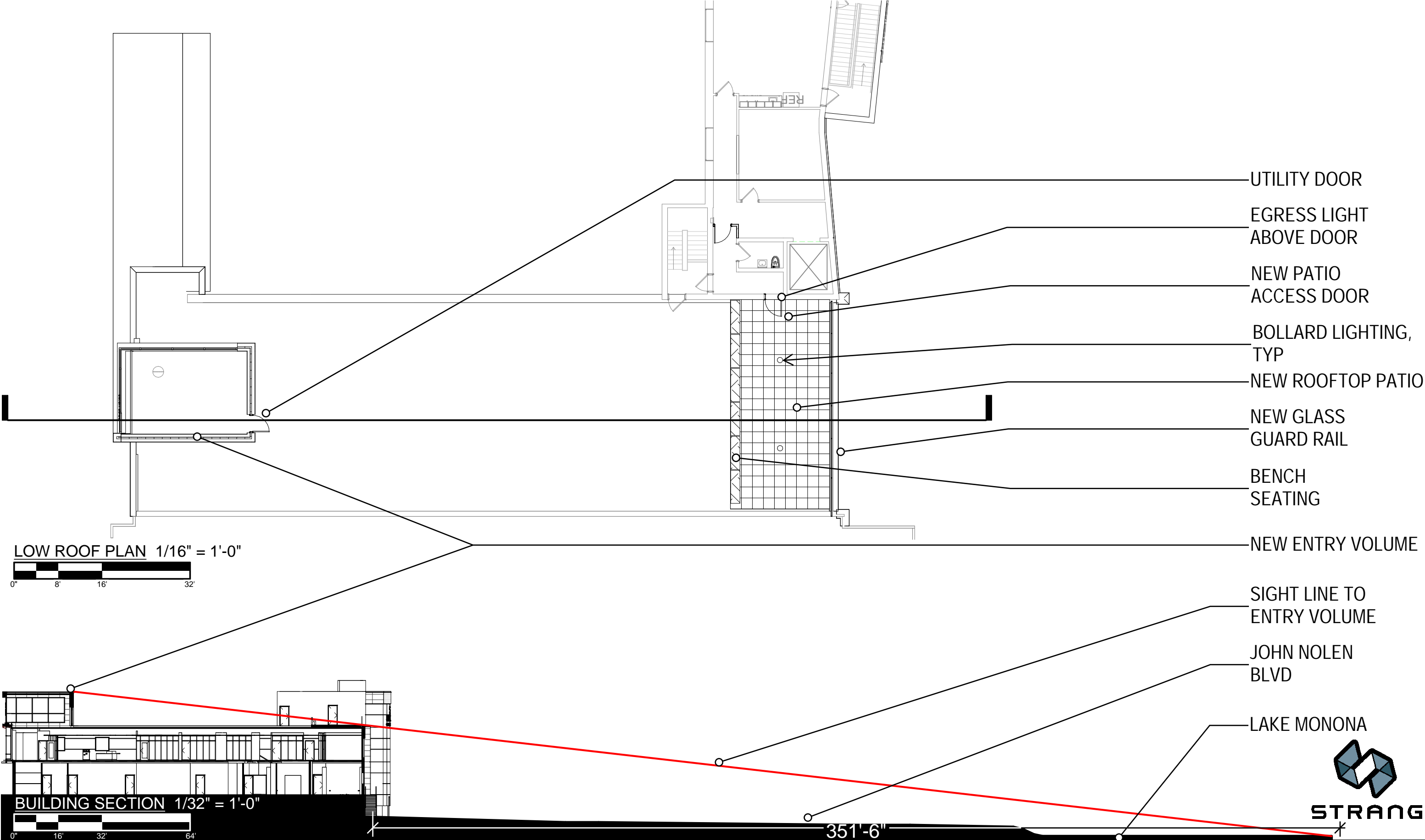
# JOHN NOLEN DRIVE FRONTAGE



SOUTHEAST ELEVATION 1/8" = 1'-0"



# ROOF PATIO PLAN AND BUILDING SECTION



- UTILITY DOOR
- EGRESS LIGHT ABOVE DOOR
- NEW PATIO ACCESS DOOR
- BOLLARD LIGHTING, TYP
- NEW ROOFTOP PATIO
- NEW GLASS GUARD RAIL
- BENCH SEATING
- NEW ENTRY VOLUME

LOW ROOF PLAN 1/16" = 1'-0"  
 0" 8' 16' 32'

BUILDING SECTION 1/32" = 1'-0"  
 0" 16' 32' 64' 351'-6"

- SIGHT LINE TO ENTRY VOLUME
- JOHN NOLEN BLVD
- LAKE MONONA





# FACADE MATERIAL SAMPLES



METALLIC COPPER METAL PANEL  
(ACM PANEL - NON-REFLECTIVE  
COATING) - E WILSON FACADE  
AND JOHN NOLEN FACADE

BRICK - E WILSON FACADE AND  
CANOPY SUPPORTS  
(MANGANESE IRONSPOT BRICK)

TINTED GLASS - NEW WINDOWS

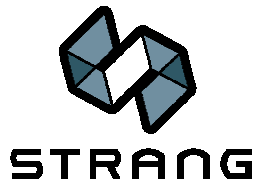
CLEAR ANODIZED ALUMINUM -  
WINDOW FRAMES

CLEAR ANODIZED ALUMINUM -  
V-SHAPED CANOPY AND  
FLASHING

DARK GREY PAINT - WILSON ST  
PARKING AND JOHN NOLEN  
FACADE

MEDIUM GREY PAINT - JOHN  
NOLEN FACADE

LIGHT GREY PAINT -  
JOHN NOLEN FACADE





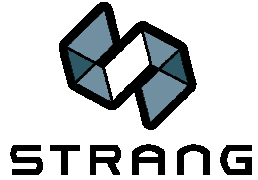
# FACADE MATERIAL SAMPLES



WILSON ST. FACADE



JOHN NOLEN BLVD. FACADE





# ROOF PATIO SAMPLES & IMAGERY



BOLLARD LIGHT FIXTURE



EGRESS LIGHT FIXTURE  
ABOVE PATIO ACCESS DOOR



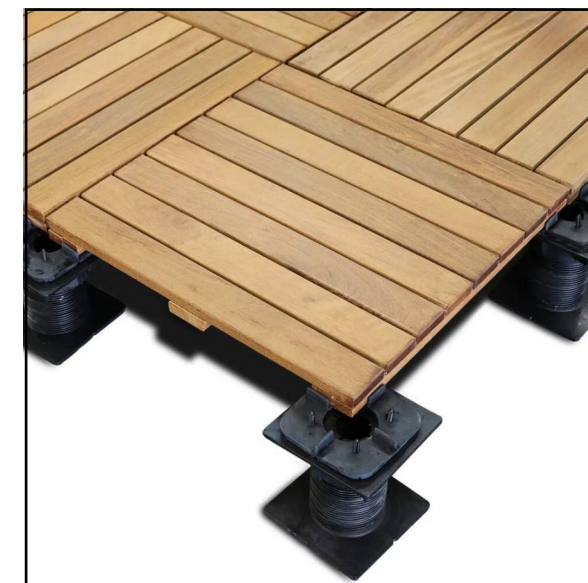
CLEAR ANODIZED ALUMINUM  
ROUND TOP RAIL

CLEAR GLASS PANELS

CLEAR ANODIZED ALUMINUM  
CONTINUOUS SUPPORT RAIL



BENCH, IPE AND METAL SEAT AND BACK



IPE PAVER



# THANK YOU

COMMENTS / QUESTIONS

