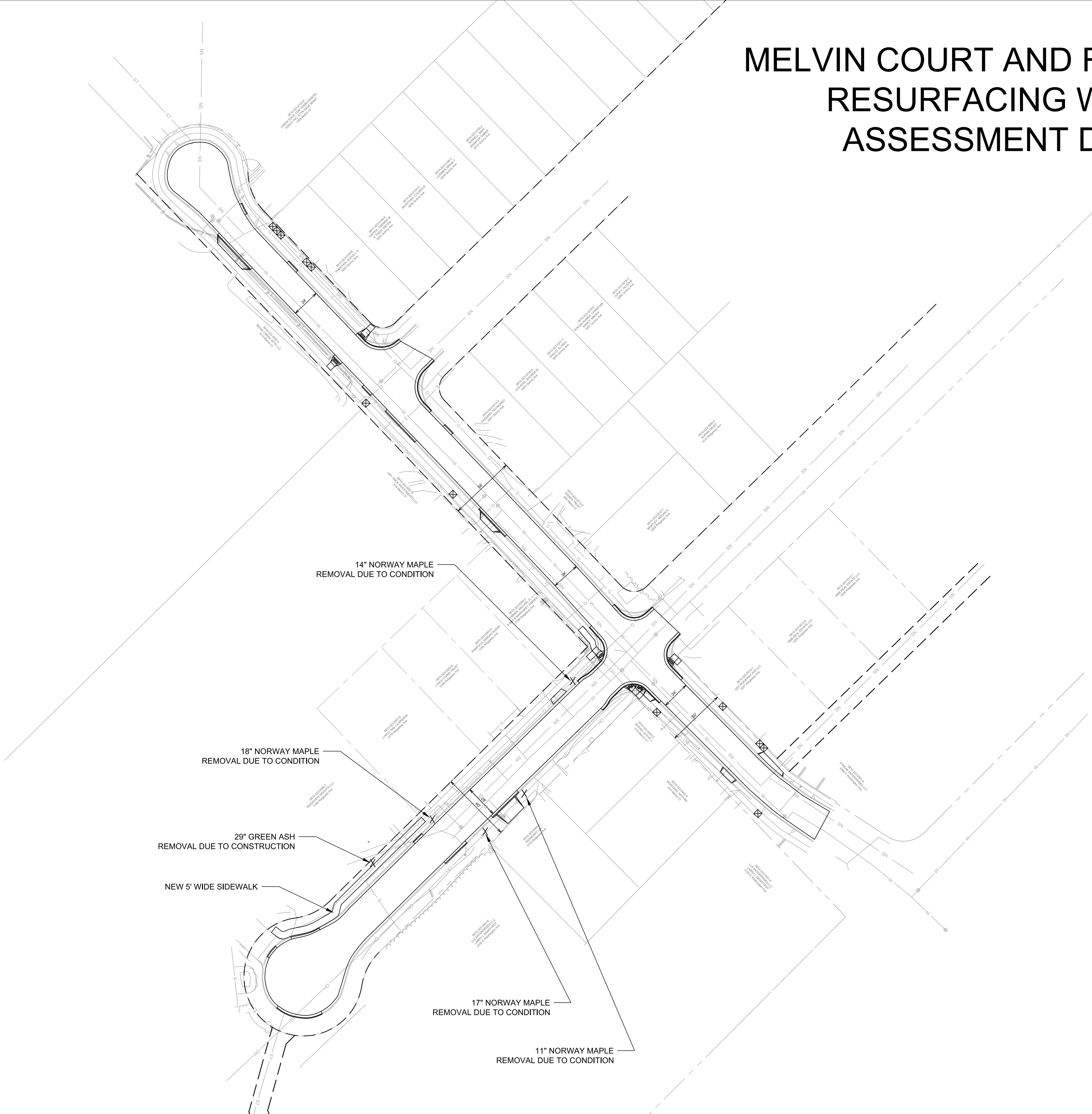


MELVIN COURT AND RIDGEWAY AVENUE RESURFACING WITH UTILITIES ASSESSMENT DISTRICT-2021



14" NORWAY MAPLE
REMOVAL DUE TO CONDITION

18" NORWAY MAPLE
REMOVAL DUE TO CONDITION

29" GREEN ASH
REMOVAL DUE TO CONSTRUCTION

NEW 5' WIDE SIDEWALK

17" NORWAY MAPLE
REMOVAL DUE TO CONDITION

11" NORWAY MAPLE
REMOVAL DUE TO CONDITION