

LOCATION

PROJECT

# Gas Station

## 2702 East Washington Avenue

OWNER

# Farooq Shahzad

## 3505 East Washington Avenue Madison, WI 53704 (608)209-0822

ZONING

SITE DATA

INDEX

BUILDING SIZE	2,000
CONSTRUCTION TYPE	5B
BUILDING HEIGHT	25 FEET
NUMBER OF STORIES	2
OCCUPANCY TYPE	B
CAPACITY	20
LOT SIZE	14,777 SQUARE FEET
PARKING	5
PUMPS	3
ZONING	C2

T1	TITLE SHEET
C1	DEMOLITION/EROISION CONTROL PLAN
C2	SITE PLAN
C3	LANDSCAPE PLAN
C4	UTILITY PLAN
A1	FLOOR PLAN
A2	BUILDING ELEVATIONS
A3	BUILDING SECTIONS

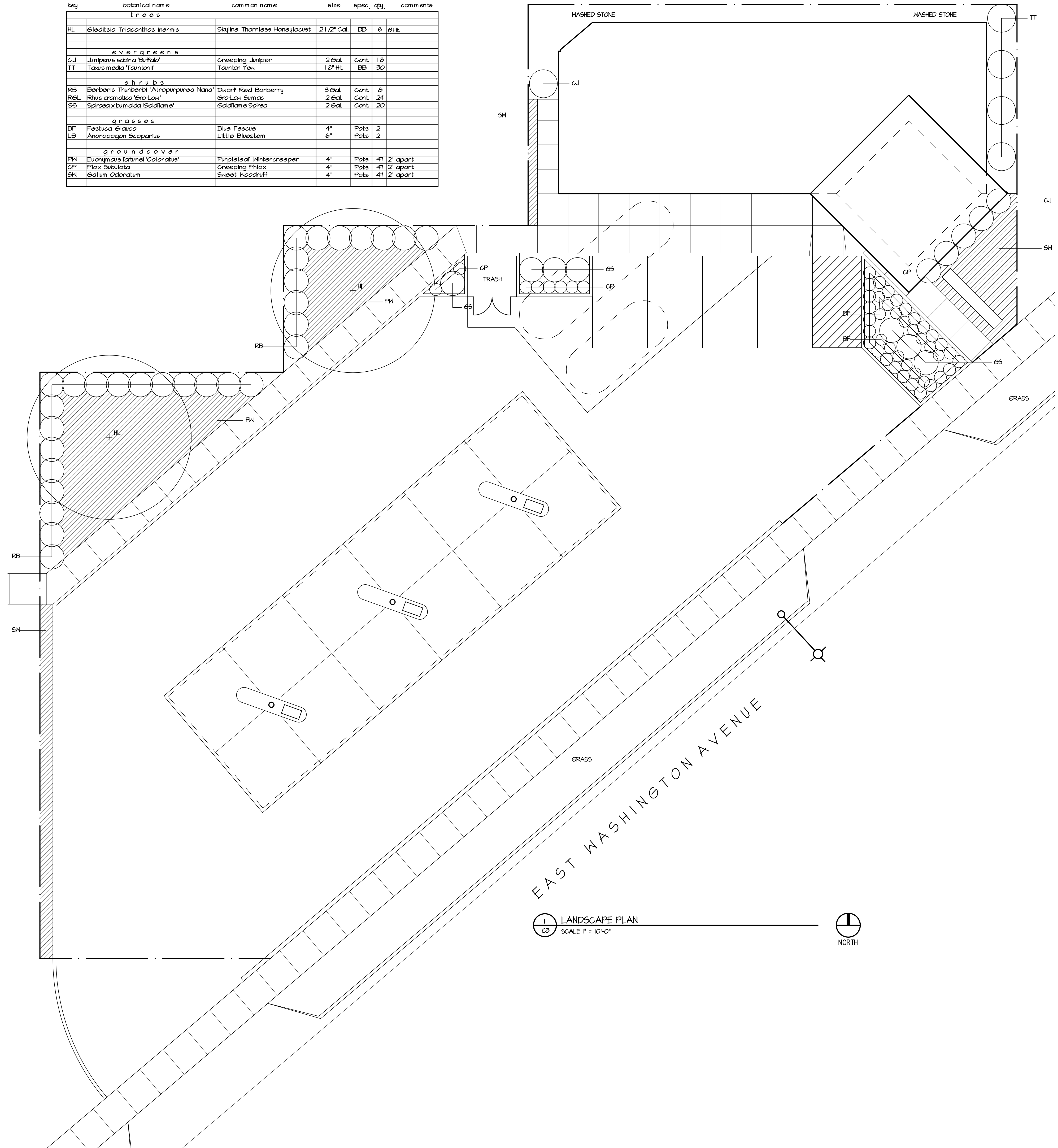
DRAWING  
TITLE SHEET  
LOCATION/ZONING MAP

DATA  
Project # 200717  
Date: 07.07.07  
Drawn by: jws

T1

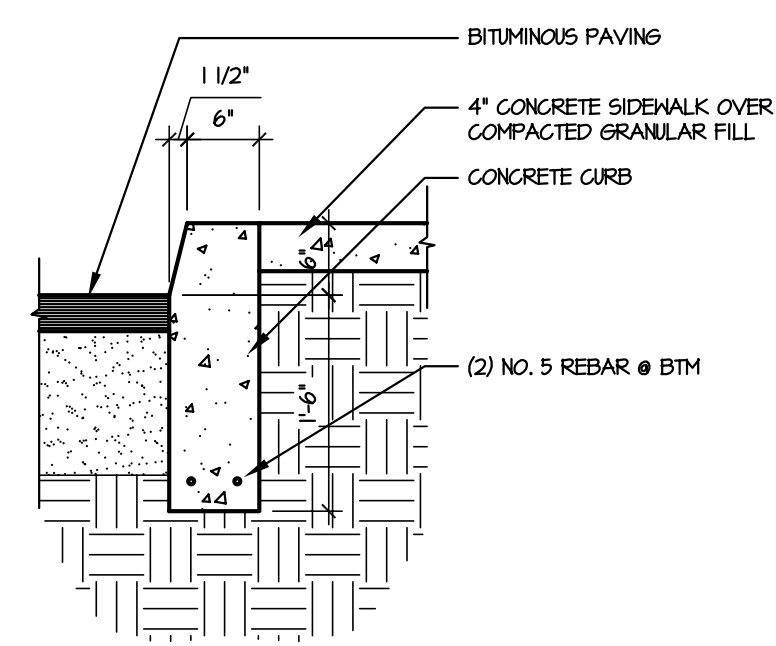
PLANT LIST

key	botanical name	common name	size	spec.	qty.	comments
<b>trees</b>						
HL	<i>Gleditsia Triacanthos Inermis</i>	Skynline Thornless Honeylocust	21/2' Cal.	BB	6	@HT
<b>evergreens</b>						
CJ	<i>Juniperus scabra Buffalo</i>	Creeping Juniper	2 @al.	Cont.	1 @	
TT	<i>Taxus media 'Tautanini'</i>	Tautan Tax	1 @' HL	BB	30	
<b>shrubs</b>						
RB	<i>Berberis Thunbergii 'Atropurpurea Nana'</i>	Dwarf Red Barberry	3 @al.	Cont.	8	
REL	<i>Rhus aromatica 'Gro-Lax'</i>	Gro-Lax Sumac	2 @al.	Cont.	24	
ES	<i>Spiraea x burbankii 'Goldflame'</i>	Goldflame Spiraea	2 @al.	Cont.	20	
<b>grasses</b>						
BF	<i>Festuca Glauca</i>	Blue Fescue	4"	Pots	2	
LB	<i>Anoropogon Scoparius</i>	Little Bluestem	6"	Pots	2	
<b>groundcover</b>						
PH	<i>Euanymus fortunei 'Coloratus'</i>	Purpleleaf Wintercreeper	4"	Pots	41	2' apart
CP	<i>Plox subulata</i>	Creeping Phlox	4"	Pots	41	2' apart
SK	<i>Gallium Odoratum</i>	Sweet Woodruff	4"	Pots	41	2' apart

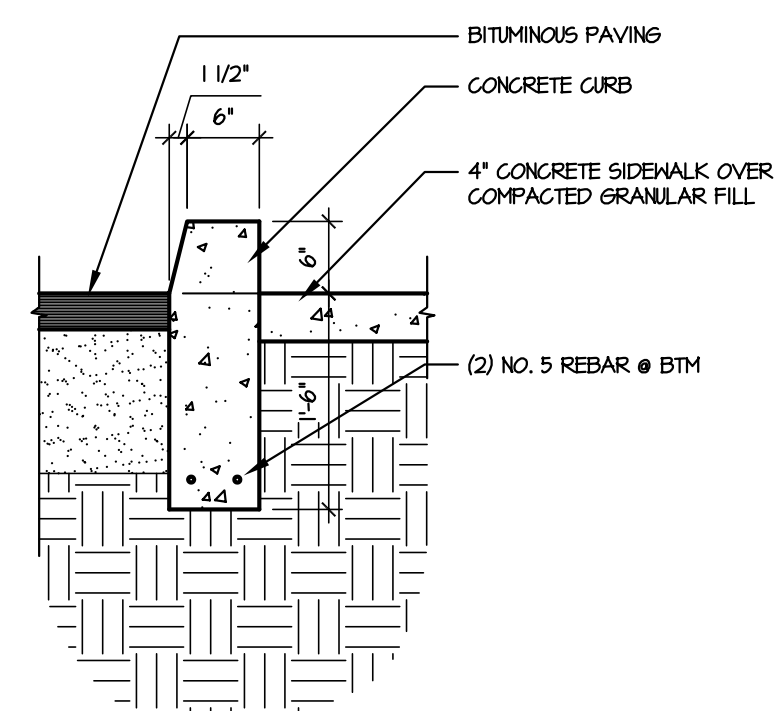


PROJECT  
**The Gas Station**  
2702 East Washington Ave.  
Madison Wisconsin  
DRAWING  
LANDSCAPE PLAN

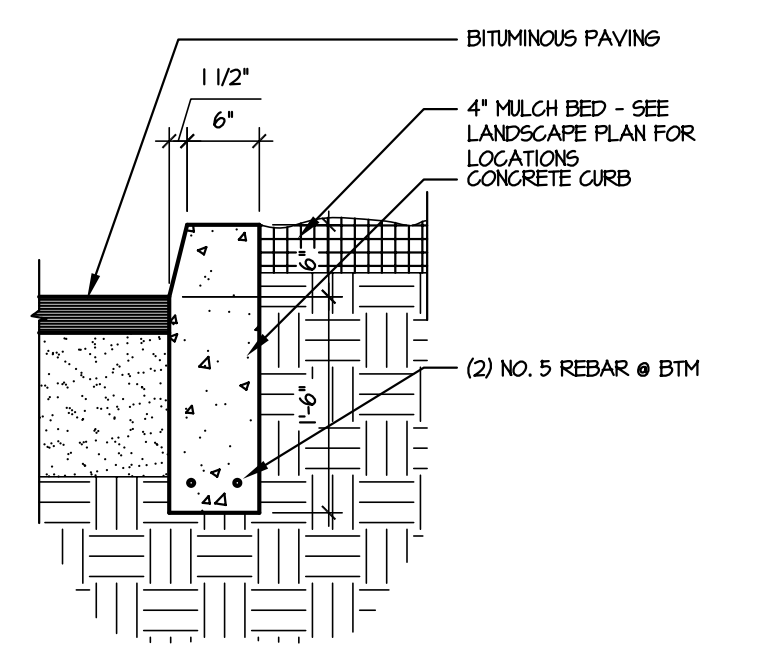
DATA  
Project # 200717  
Date: 07.07.07  
Drawn by: j.w.a.



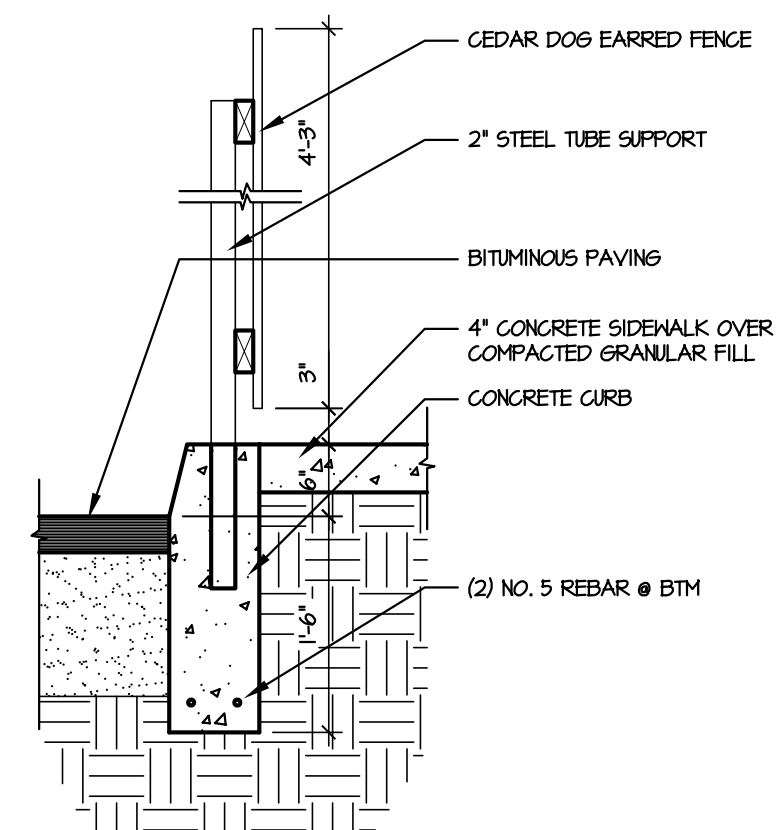
**2 CURB/SIDEWALK DETAIL**  
SCALE 3/4" = 1'-0"



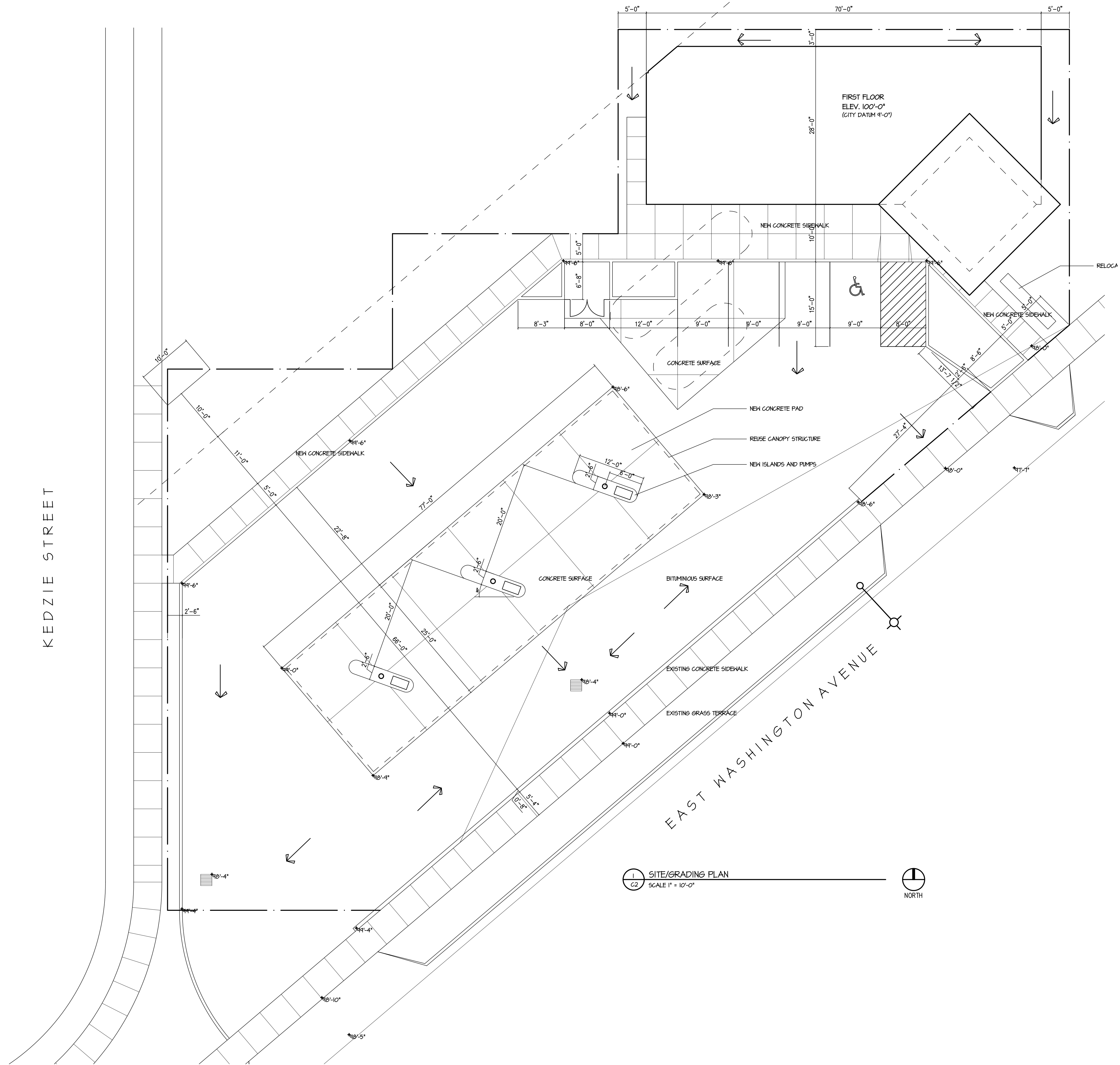
**3 RAISED CURB DETAIL**  
SCALE 3/4" = 1'-0"



**4 CURB DETAIL**  
SCALE 3/4" = 1'-0"



**5 TRASH SCREEN DETAIL**  
SCALE 3/4" = 1'-0"



**1 SITE/GRADING PLAN**  
SCALE 1" = 10'-0"  
NORTH

PROJECT  
**The Gas Station**  
2702 East Washington Ave.  
Madison Wisconsin  
DRAWING  
SITE/GRADING PLAN

DATA  
Project # 200717  
Date: 07.07.07  
Drawn by: j.w.a.

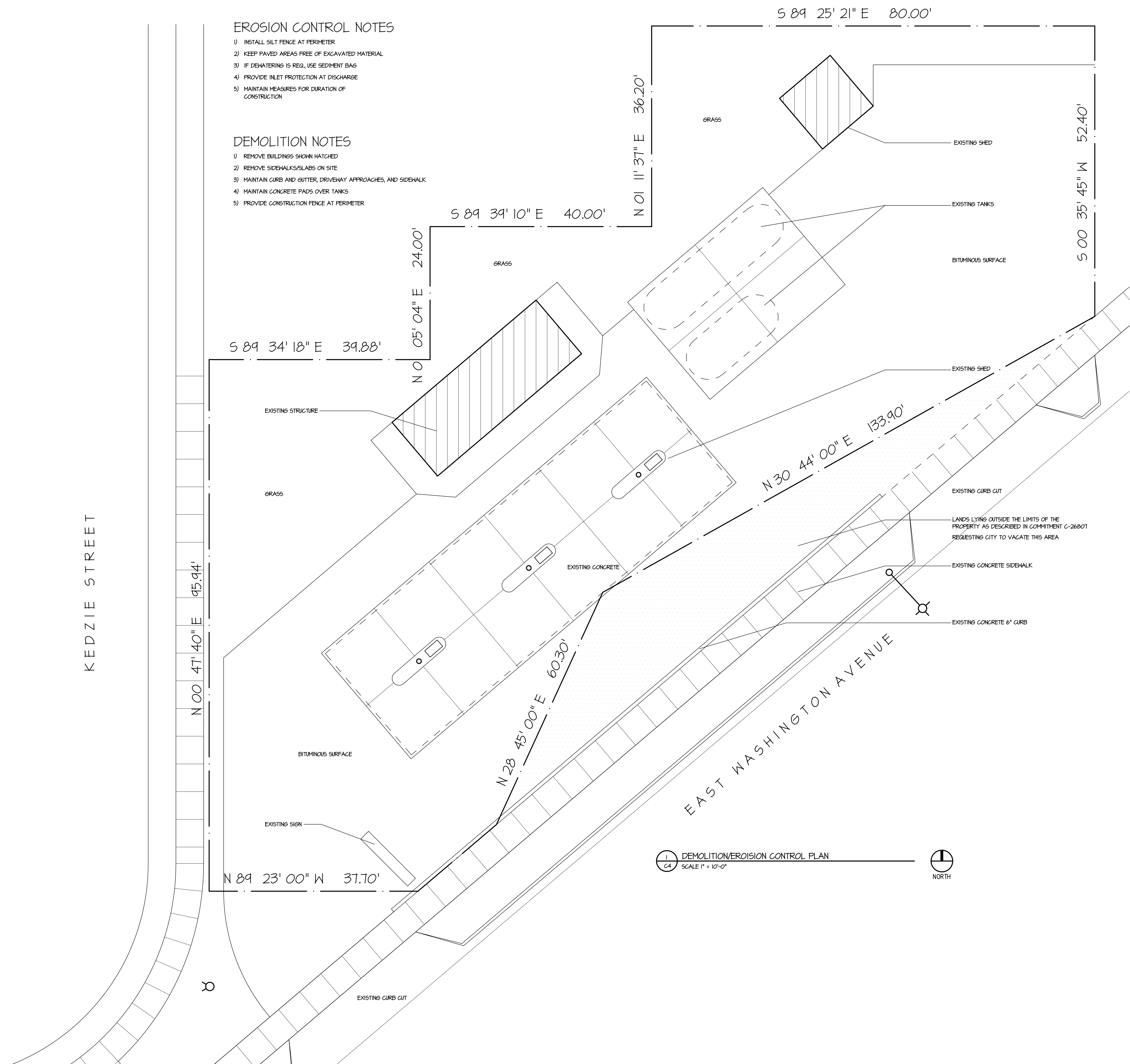
**EROSION CONTROL NOTES**

- 1) INSTALL SILT FENCE AT PERIMETER
- 2) KEEP PAVED AREAS FREE OF EXCAVATED MATERIAL
- 3) IF DEWATERING IS REQ., USE SEDIMENT BAG
- 4) PROVIDE INLET PROTECTION AT DISCHARGE
- 5) MAINTAIN MEASURES FOR DURATION OF CONSTRUCTION

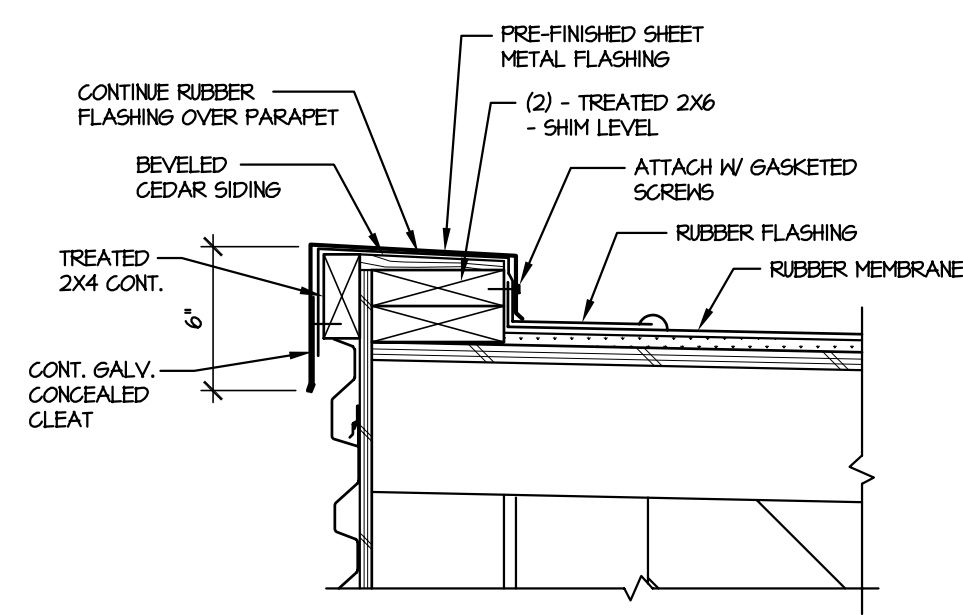
**DEMOLITION NOTES**

- 1) REMOVE BUILDINGS SHOWN HATCHED
- 2) REMOVE SIDEWALKS/SLABS ON SITE
- 3) MAINTAIN CURB AND GUTTER, DRIVEWAY APPROACHES, AND SIDEWALK
- 4) MAINTAIN CONCRETE PADS OVER TANKS
- 5) PROVIDE CONSTRUCTION FENCE AT PERIMETER

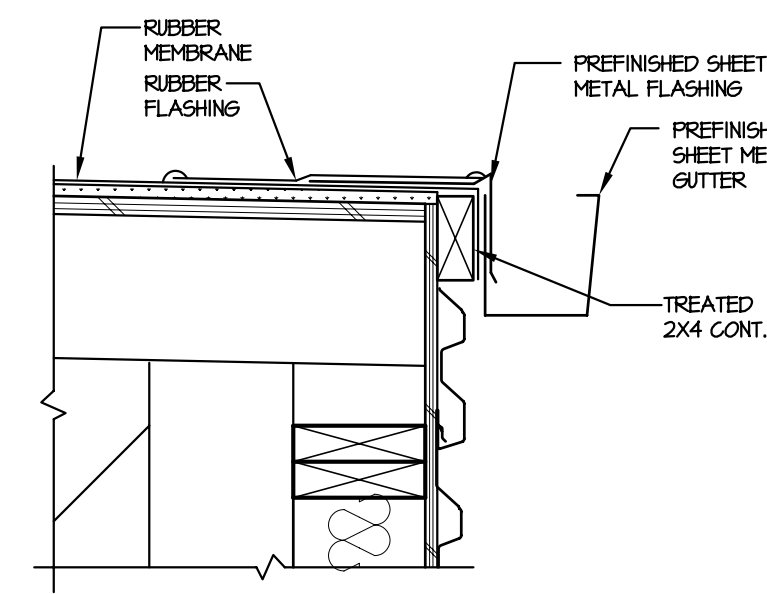
KEDZIE STREET



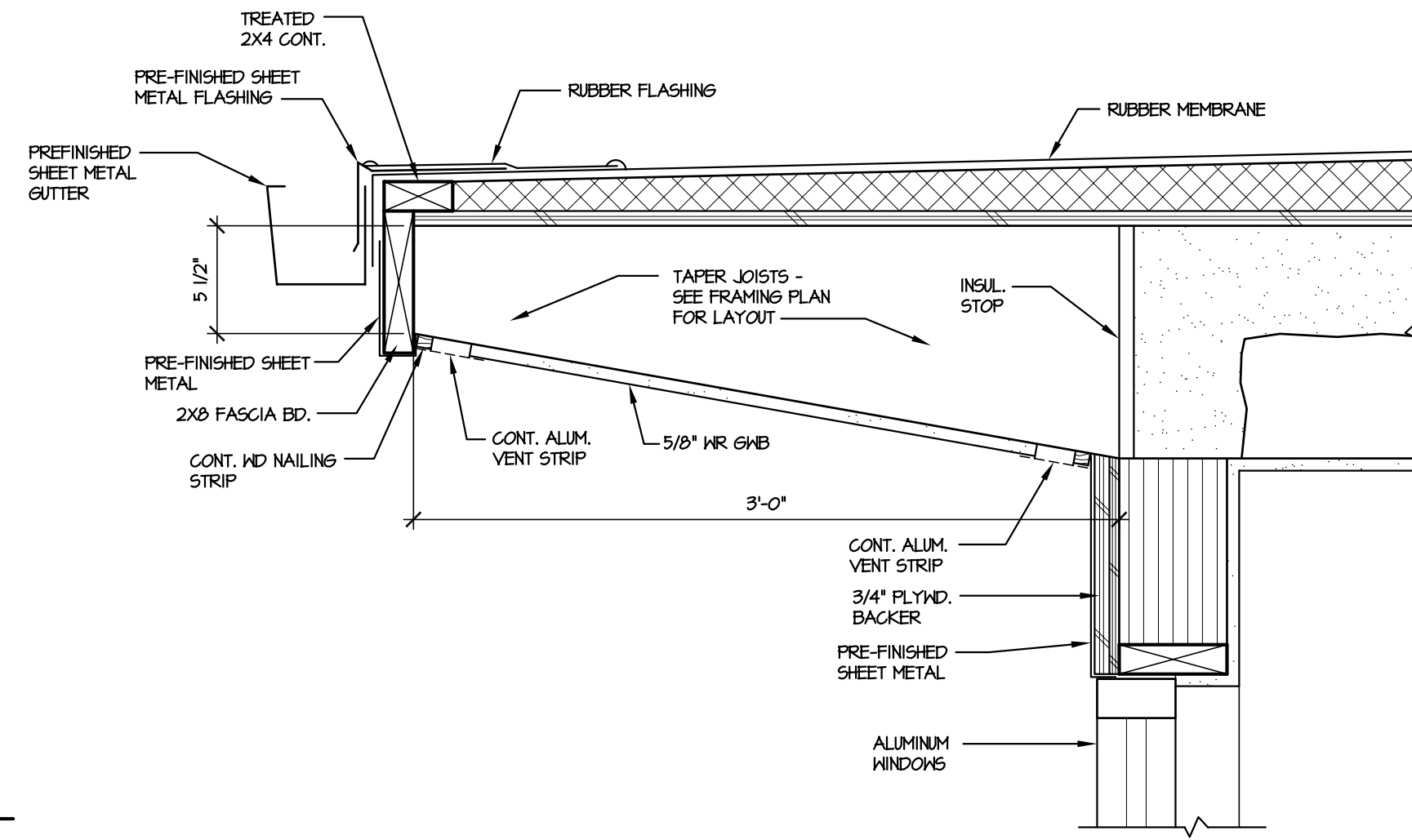
<b>PROJECT</b>	
The Gas Station	
2702 East Washington Ave. Madison Wisconsin	
<b>DRAWING</b>	
DEMOLITION/EROISION CONTROL	
<b>DATA</b>	
Project #	200717
Date:	07.07.07
Drawn by:	j.w.s.



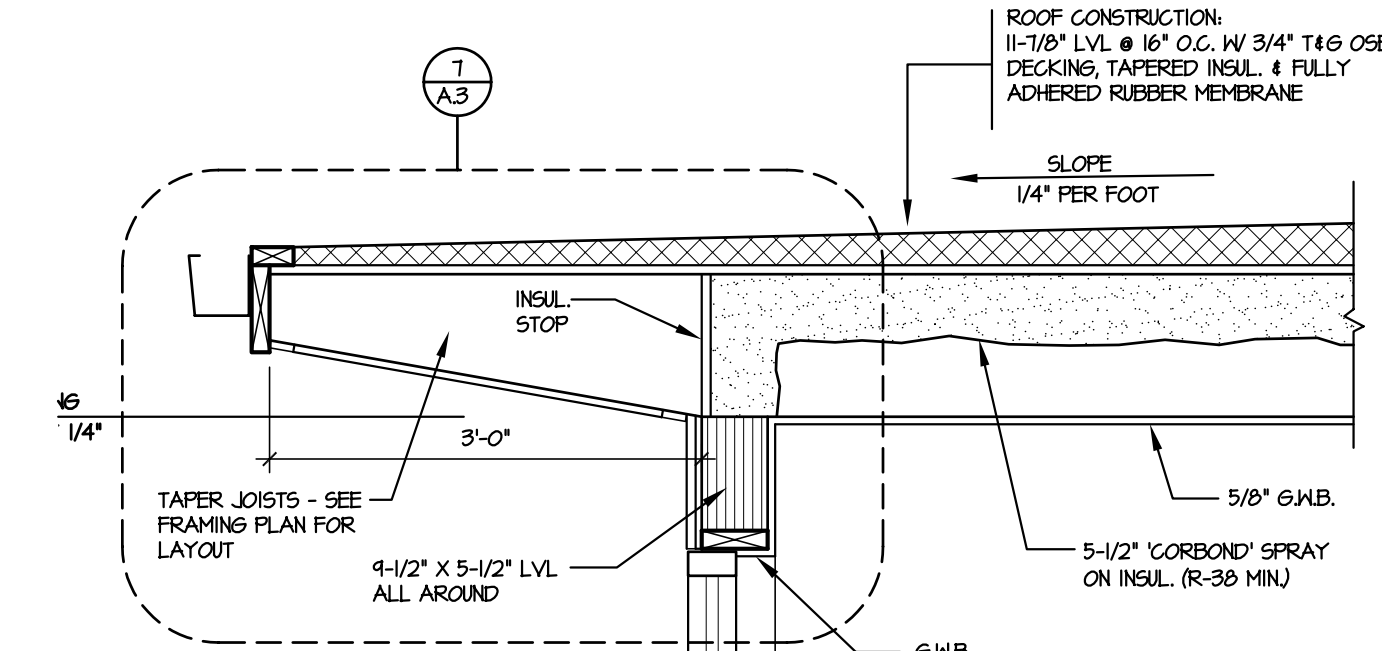
5 ROOF EDGE  
A.3 1 1/2" = 1'-0"



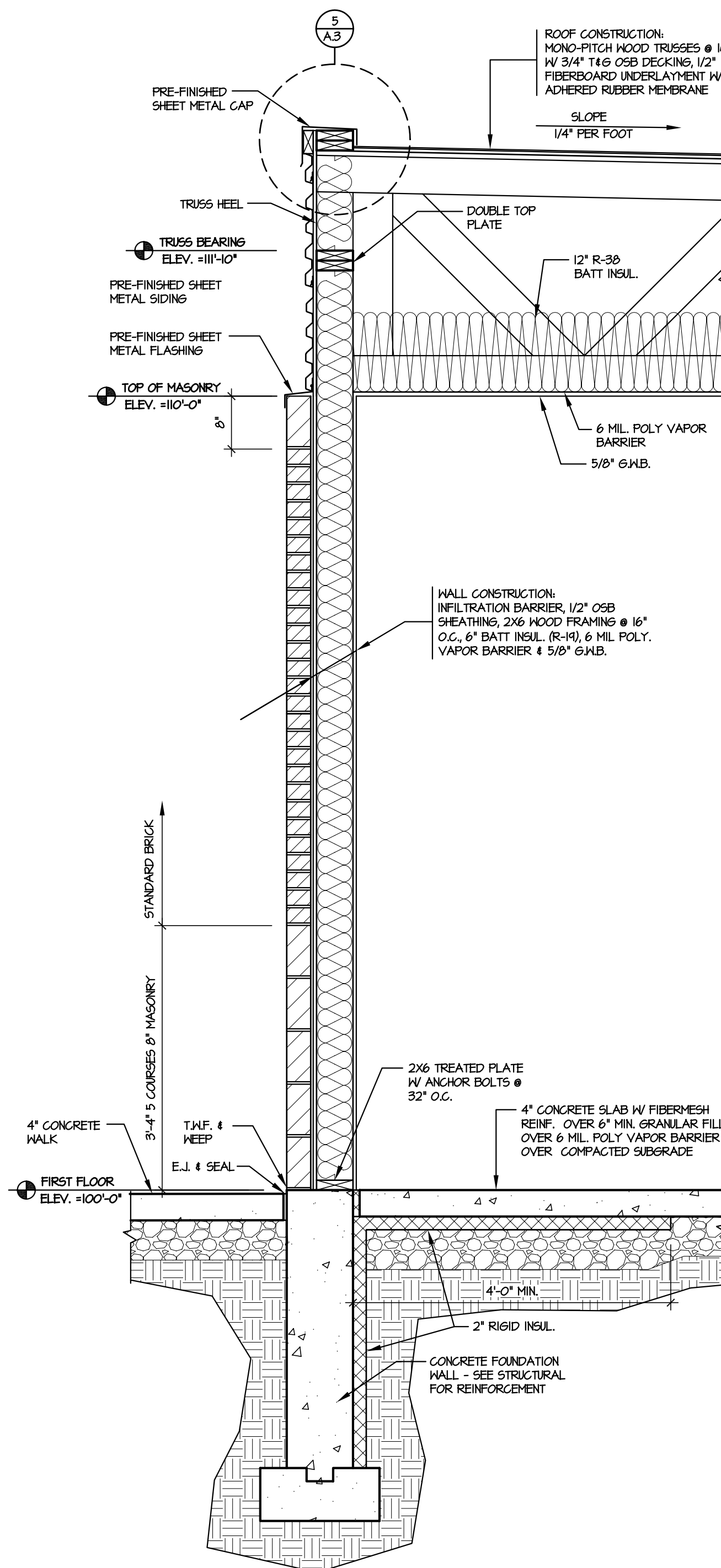
6 ROOF EDGE  
A.3 1 1/2" = 1'-0"



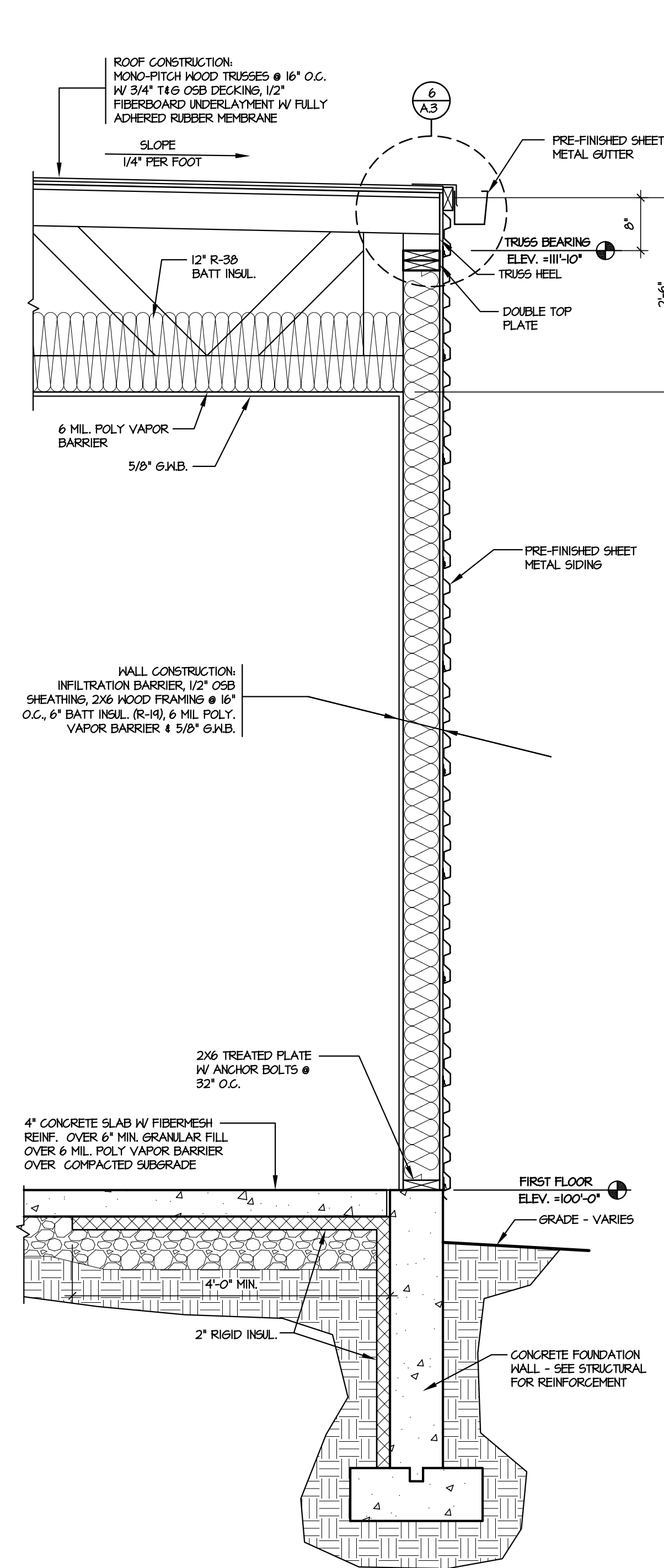
7 ROOF EDGE  
A.3 1 1/2" = 1'-0"



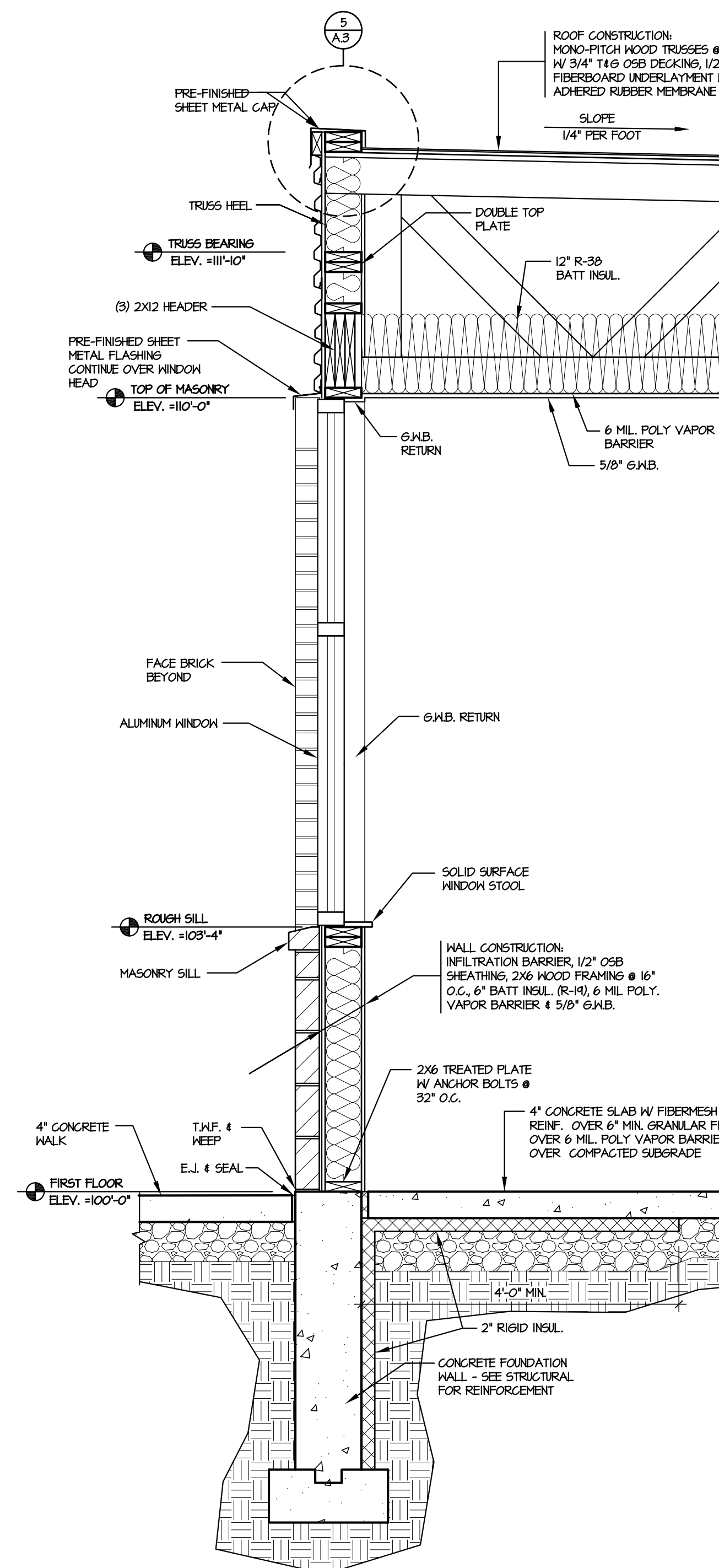
8 ROOF EDGE  
A.3 1 1/2" = 1'-0"



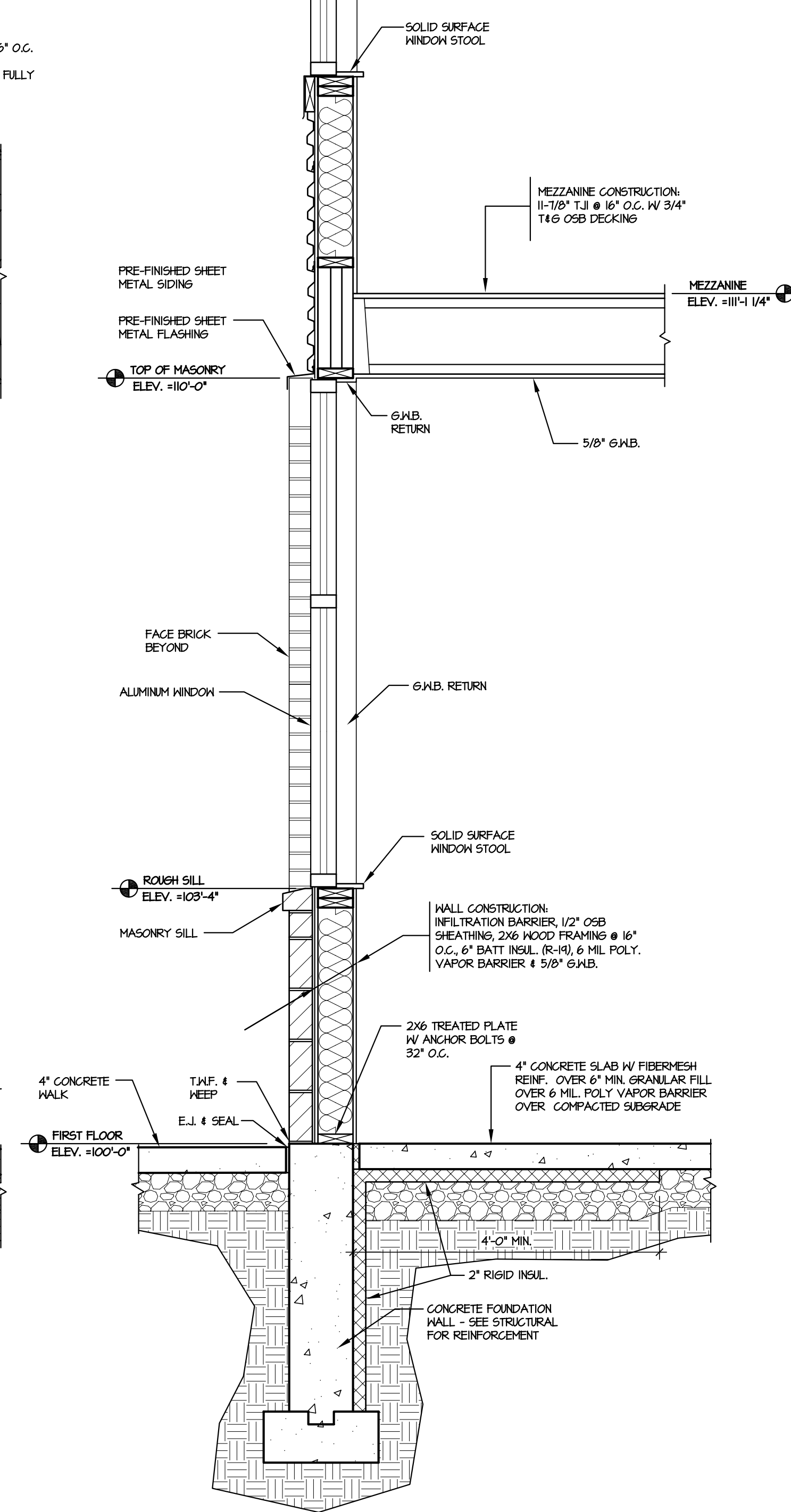
1 WALL SECTION  
A.3 3/4" = 1'-0"



2 WALL SECTION  
A.3 3/4" = 1'-0"

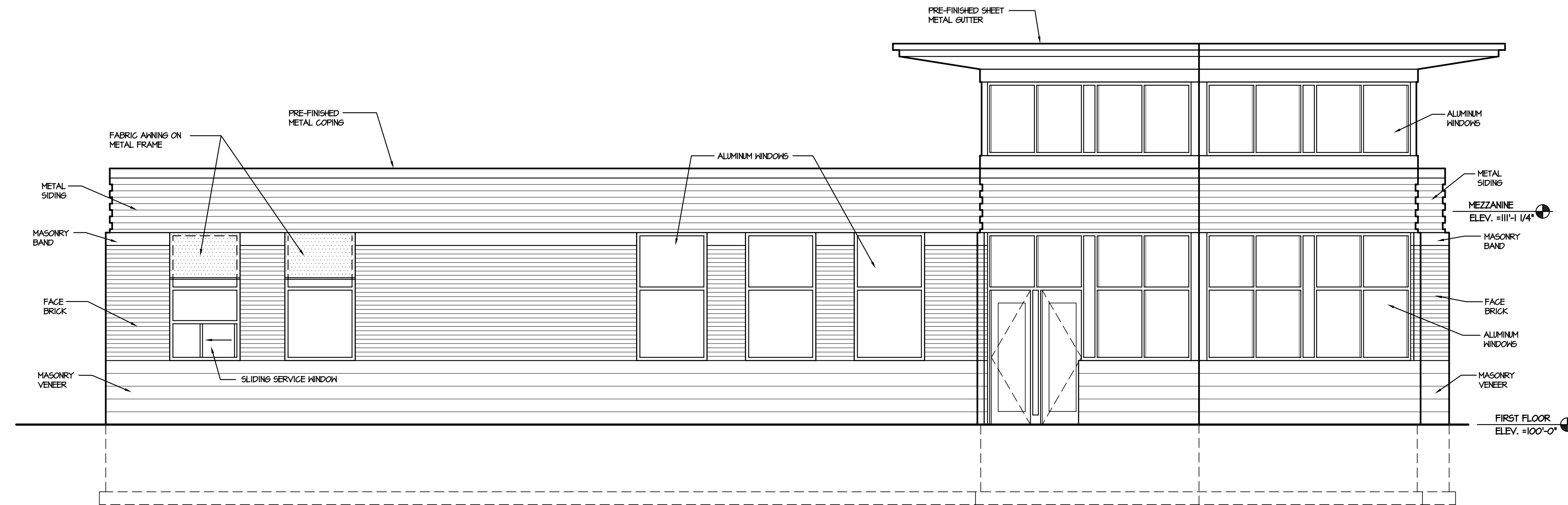


3 WALL SECTION  
A.3 3/4" = 1'-0"

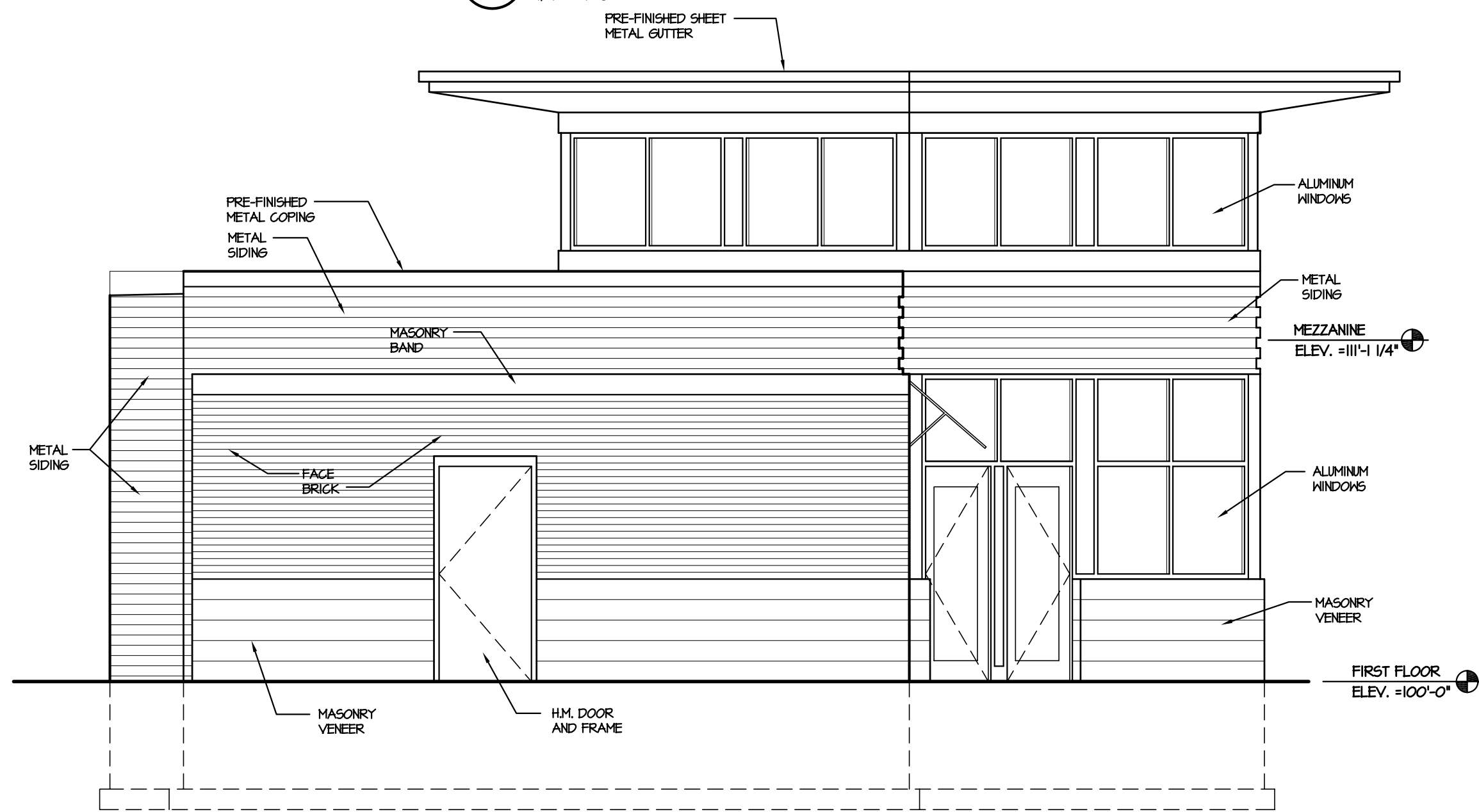


4 WALL SECTION  
A.3 3/4" = 1'-0"

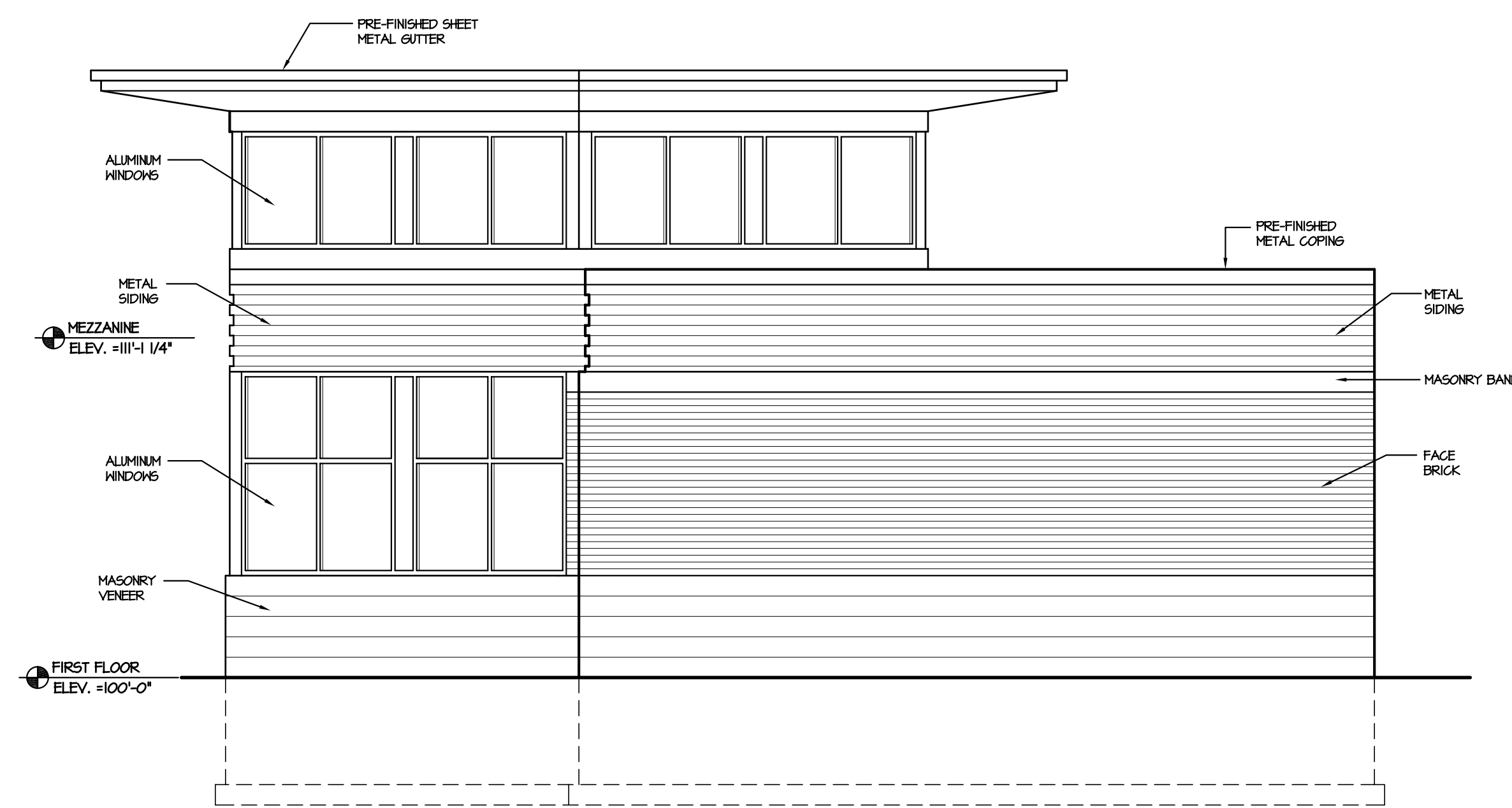




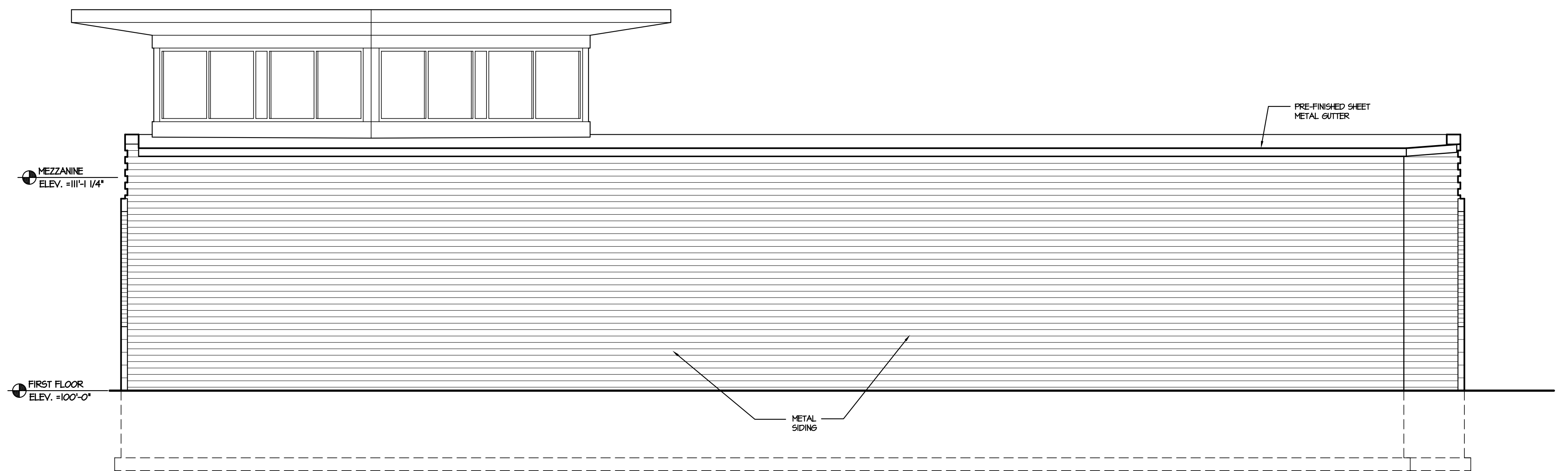
1 SOUTH ELEVATION  
A.2  
1/4" = 1'-0"



2 WEST ELEVATION  
A.2  
1/4" = 1'-0"



3 EAST ELEVATION  
A.2  
1/4" = 1'-0"



4 NORTH ELEVATION  
A.2  
1/4" = 1'-0"

PROJECT

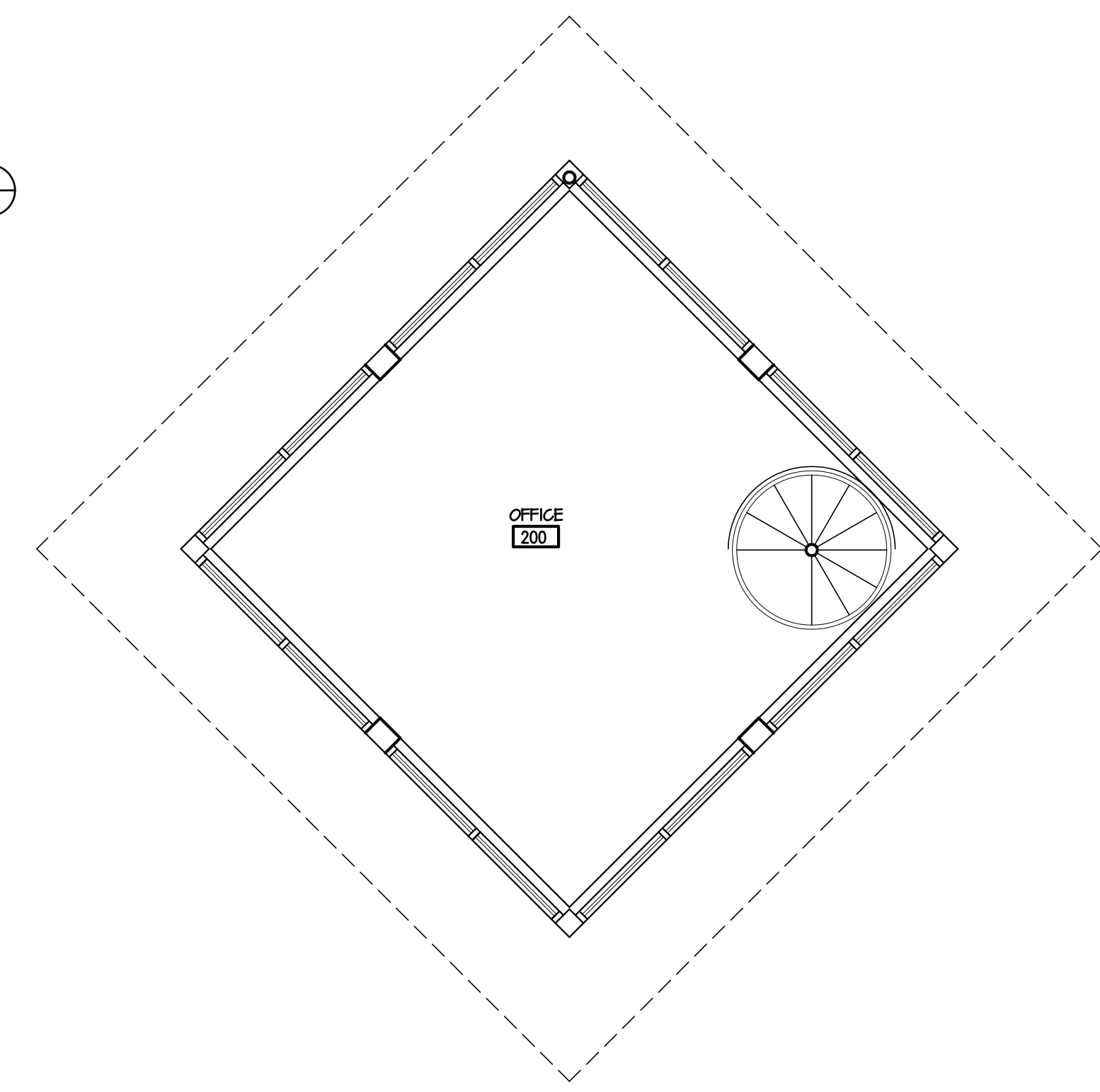
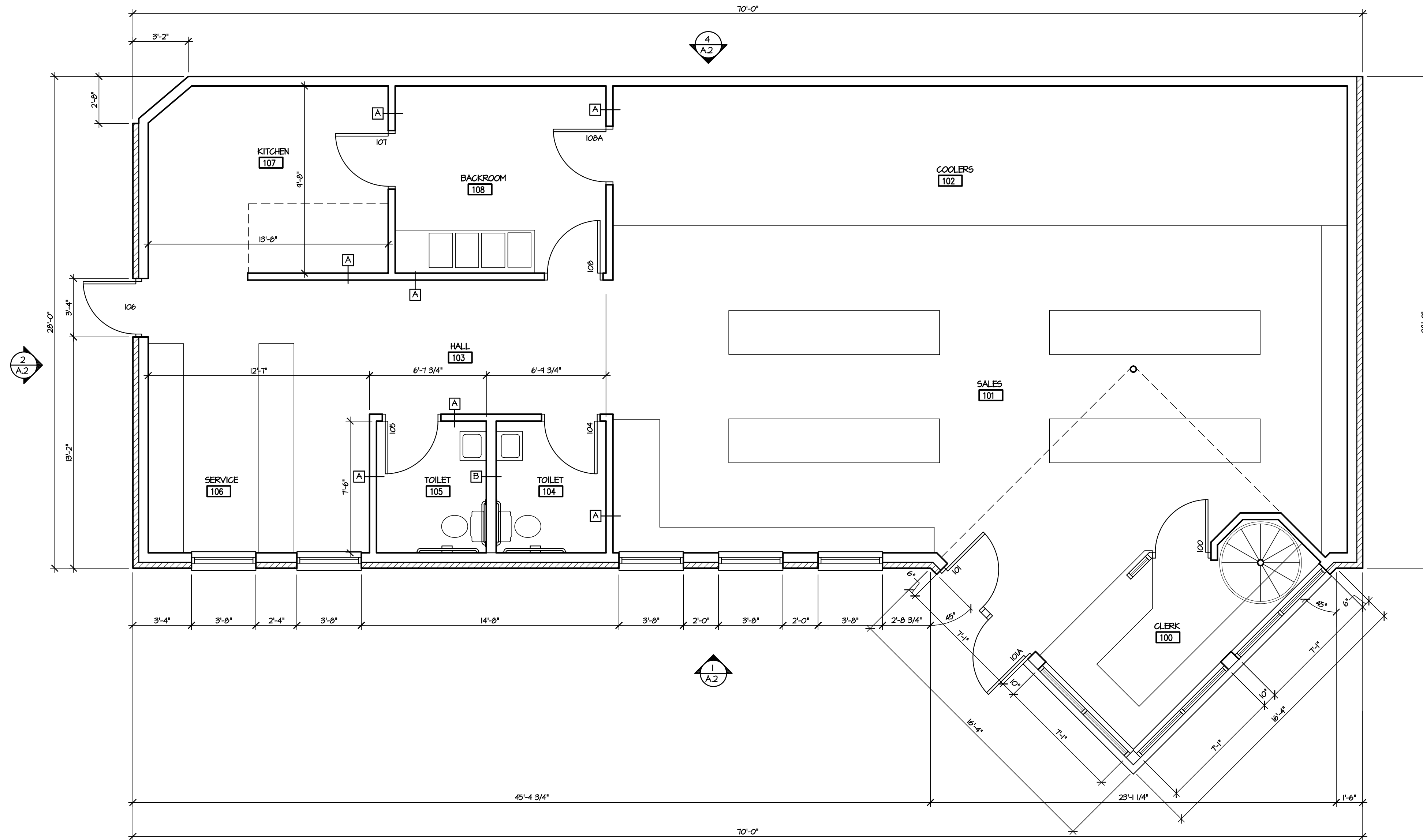
Capitol Petroleum

2702 E. Washington Avenue  
Madison, Wisconsin

DRAWING  
EXTERIOR ELEVATIONS

DATA

Project # 200717  
Date: 09.24.07  
Drawn by: j.w.s.

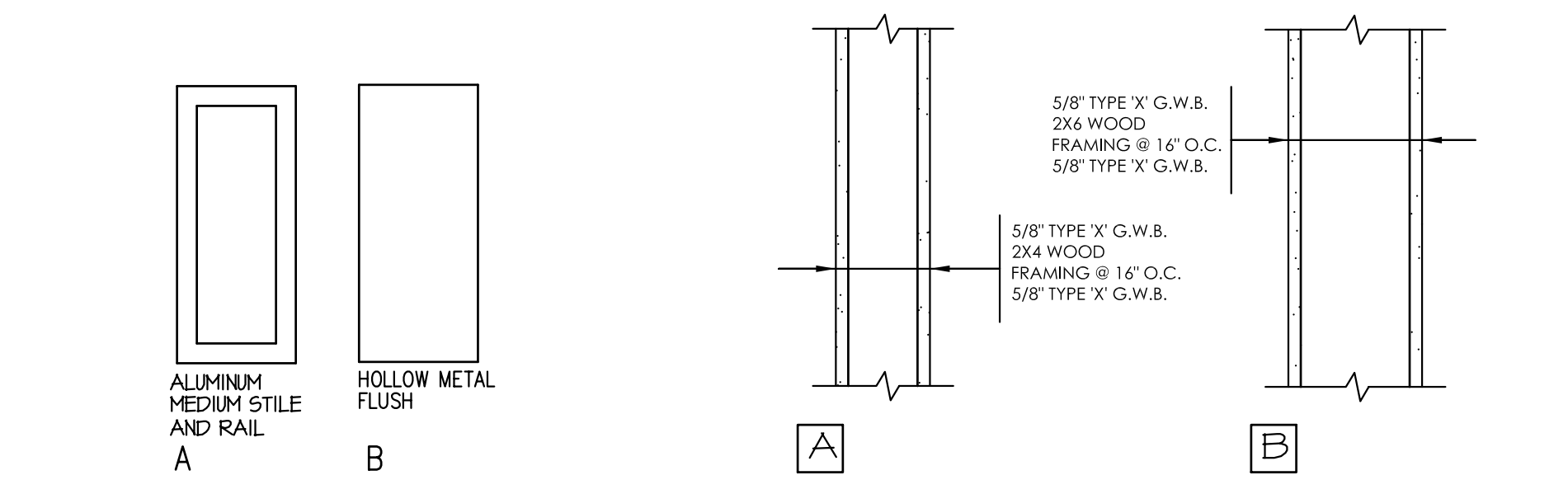


1 FIRST FLOOR PLAN  
A1 1/4" = 1'-0"

2 MEZZANINE PLAN  
A1 1/4" = 1'-0"

DOOR & FRAME SCHEDULE								
MARK	DOOR SIZE	DOOR			FRAME			REMARKS
		TYPE	MATERIAL	FIN	MATERIAL	FINISH	WALL THICKNESS	
100	3'-0" X 7'-0"	A	ALUM.	-	ALUM.	-	-	
101	3'-0" X 7'-0"	A	ALUM.	-	ALUM.	-	-	
101A	3'-0" X 7'-0"	A	ALUM.	-	ALUM.	-	-	
104	3'-0" X 7'-0"	B	H.M.	PNT.	H.M.	PNT.	4-3/4"	
105	3'-0" X 7'-0"	B	H.M.	PNT.	H.M.	PNT.	4-3/4"	
106	3'-0" X 7'-0"	B	H.M.	PNT.	H.M.	PNT.	-	
107	3'-0" X 7'-0"	B	H.M.	PNT.	H.M.	PNT.	4-3/4"	
108	3'-0" X 7'-0"	B	H.M.	PNT.	H.M.	PNT.	4-3/4"	
108A	3'-0" X 7'-0"	B	H.M.	PNT.	H.M.	PNT.	4-3/4"	

ABBREVIATIONS  
TF = TRANSPARENT FINISH  
H. M. = HOLLOW METAL  
PNT. = PAINT (COLOR SELECTED BY OWNER)



3 DOOR TYPES  
A1 1/4" = 1'-0"

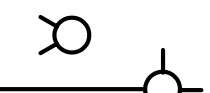

4 WALL TYPES  
A1 1/4" = 1'-0"

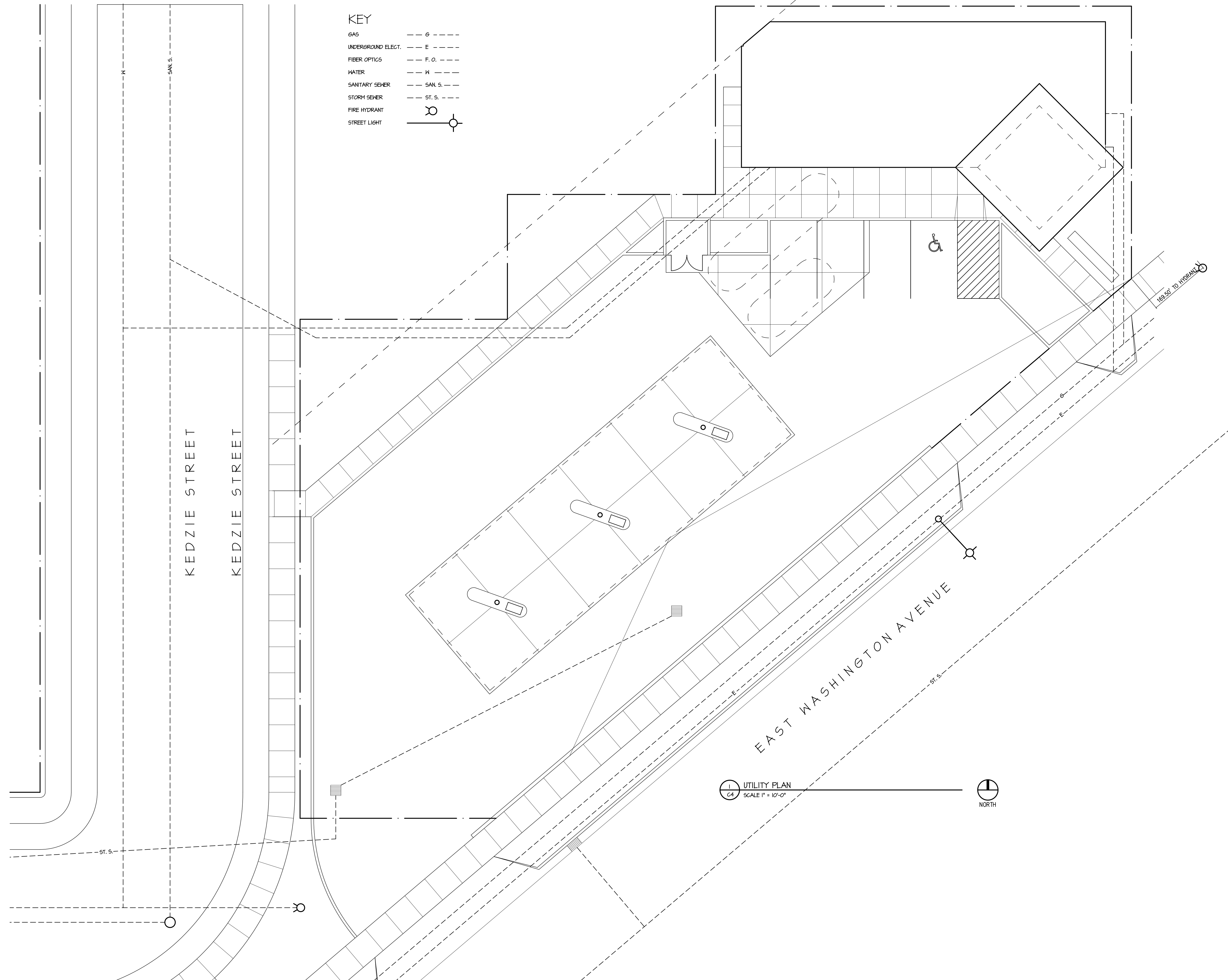
ROOM FINISH SCHEDULE									
RM NO.	ROOM NAME	FLOOR	BASE	WALLS				CEILING	REMARKS
		MATERIAL	MATERIAL	NORTH	WEST	SOUTH	EAST	FINISH	
100	SALES	TILE	TILE	PNT.	PNT.	PNT.	PNT.	PNT.	
101	CLERK	TILE	TILE	PNT.	PNT.	PNT.	PNT.	PNT.	
102	COOLERS	CONC.	TILE	PNT.	PNT.	PNT.	PNT.	PNT.	
103	HALL	TILE	TILE	PNT.	PNT.	PNT.	PNT.	PNT.	
104	TOILET	TILE	TILE	PNT.	PNT.	PNT.	PNT.	PNT.	
105	TOILET	TILE	TILE	PNT.	PNT.	PNT.	PNT.	PNT.	
106	SERVICE	TILE	TILE	PNT.	PNT.	PNT.	PNT.	PNT.	
107	KITCHEN	TILE	TILE	PNT.	PNT.	PNT.	PNT.	PNT.	
108	BACKROOM	TILE	TILE	PNT.	PNT.	PNT.	PNT.	PNT.	
200	OFFICE	CARPET	SVB	PNT.	PNT.	PNT.	PNT.	PNT.	

PROJECT  
Capitol Petroleum  
2702 E. Washington Avenue  
Madison, Wisconsin  
DRAWING  
FLOOR PLAN

DATA  
Project # 200717  
Date: 09.24.07  
Drawn by: j.w.s.

**KEY**

GAS	--- G ---
UNDERGROUND ELECT.	--- E ---
FIBER OPTICS	--- F.O. ---
WATER	--- W ---
SANITARY SEWER	--- SAN. S. ---
STORM SEWER	--- ST. S. ---
FIRE HYDRANT	
STREET LIGHT	



<b>PROJECT</b>	
The Gas Station	
2702 East Washington Ave. Madison Wisconsin	
<b>DRAWING</b>	
UTILITY PLAN	
<b>DATA</b>	
Project #	200717
Date	07.07.07
Drawn by	j.w.a.

**C4**