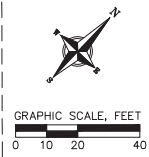
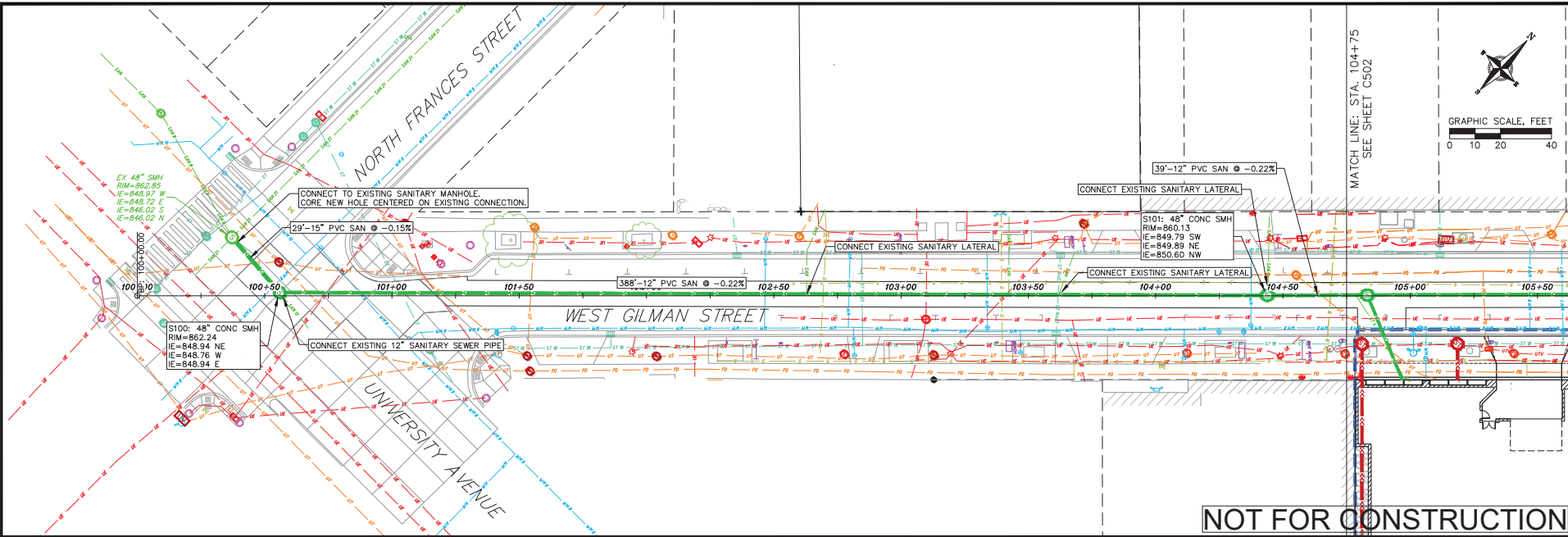


Summary of Improvements:

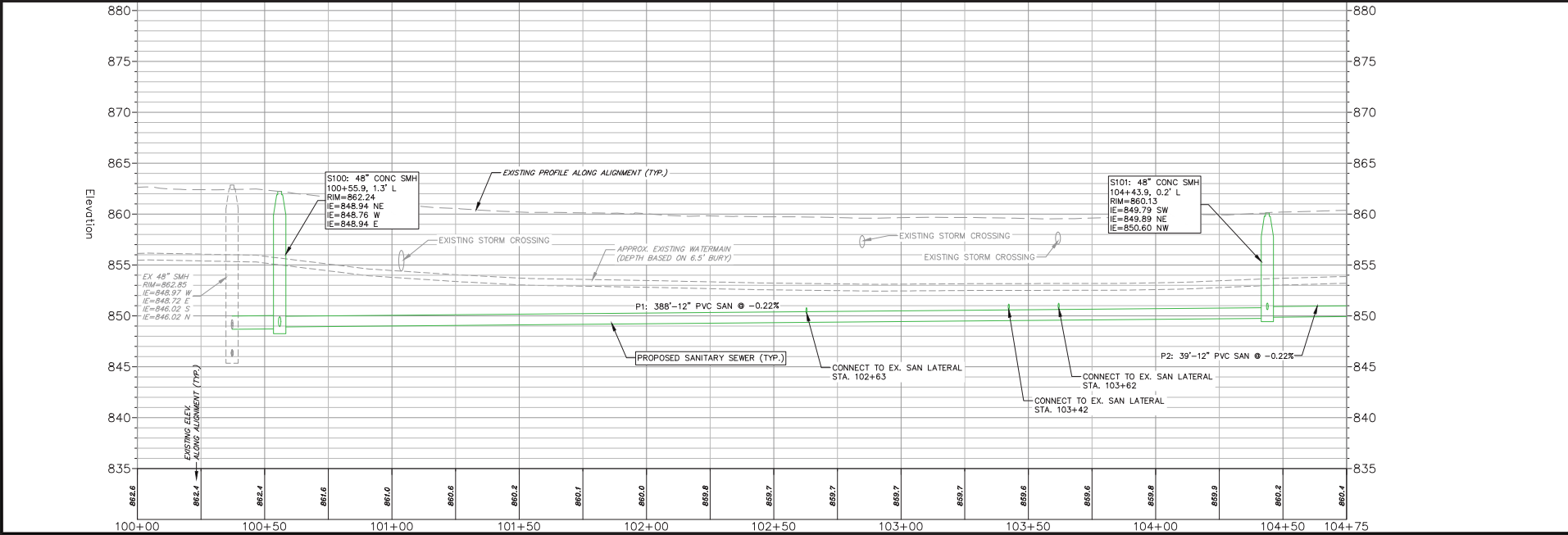
- Recording of certified Survey Map.
- Reconstruct public sidewalk, street terrace, curb and gutter, and pavement on W Gilman Street and University Avenue per plan approved by the City Engineer.
- Construct public sanitary sewer upgrades in W Gilman Street to provide the required sanitary sewer capacity to serve the private redevelopment project. Complete the public sanitary sewer upgrades and restore W Gilman Street and University Avenue as needed per plans approved by the City Engineer.
- Close abandoned driveways with curb and gutter. Construct new private drive entrance aprons per plans approved by the City Engineer and per the Commercial Driveway Permit approved by the City Traffic Engineer.
- Provide public street tree protection, removals, and plantings per City Forestry approvals and per plans approved by the City Engineer.
- City Forestry will issue a street tree removal permit for five (5) trees along W Gilman Street:
 - 8" Pear
 - 6" Elm 'New Horizon'
 - 2" Kentucky Coffeetree
 - 22" White Ash
 - 7" Pear
- Install terrace support systems per City Forestry approvals and per plans approved by the City Engineer if possible. Installation of terrace support systems will be challenging due to potential conflicts with other underground utilities along the terrace. This will require additional field review to confirm feasibility and layout/placement of cells.
- Construct private sanitary, storm, and water service laterals necessary to serve the private redevelopment project per plans approved by the City Engineer.
- Protect existing public streetlights, traffic signals, and fiber facilities in the project area. Coordinate with City Traffic Engineering and City Information Technology on relocations needed to facilitate construction.
- Coordinate project access, street closures, and street occupancy with other projects in the area and as approved by City Traffic Engineering.

© Vierbicher Associates, Inc.

09 Feb 2024 8:48a M:\Landscape Preparation\310200_449 State Street - Madison\CA-DWG\310200 - Utility Plan.dwg by:tbbar



NOT FOR CONSTRUCTION



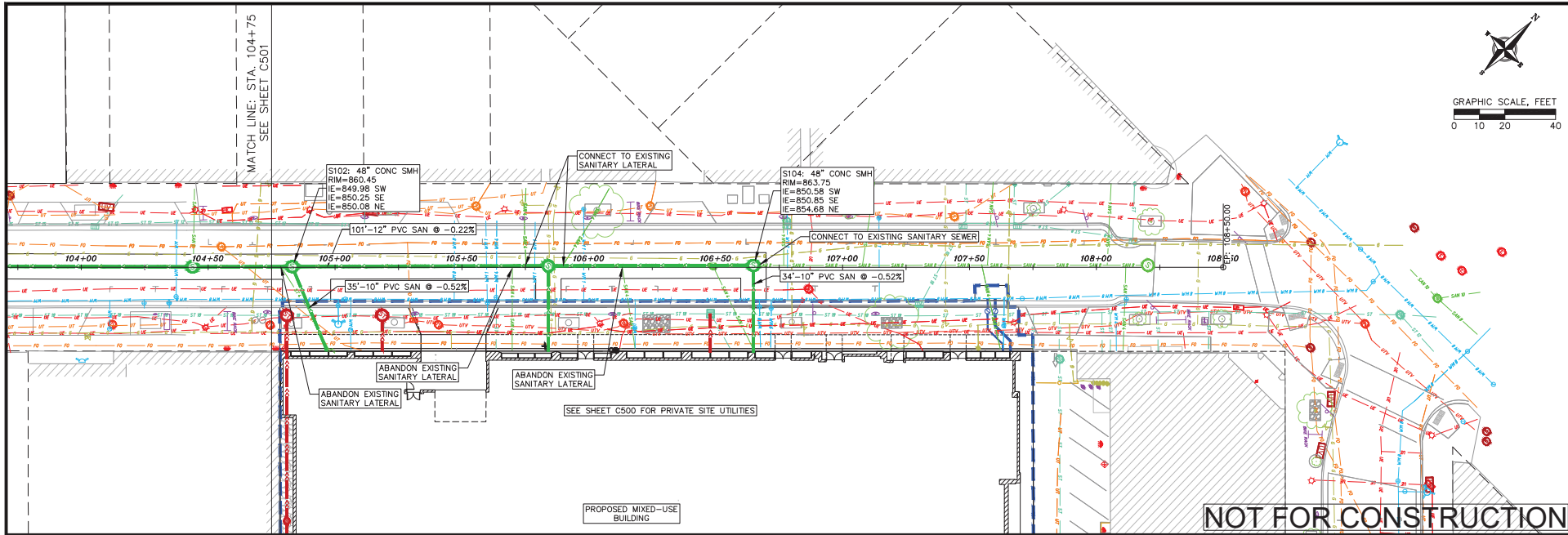
vierbicher
 engineers / architects

PLAN & PROFILE SHEET - GILMAN STREET SANITARY SEWER
 THE STANDARD - 411-433 GILMAN STREET
 CITY OF MADISON
 DANE COUNTY, WI

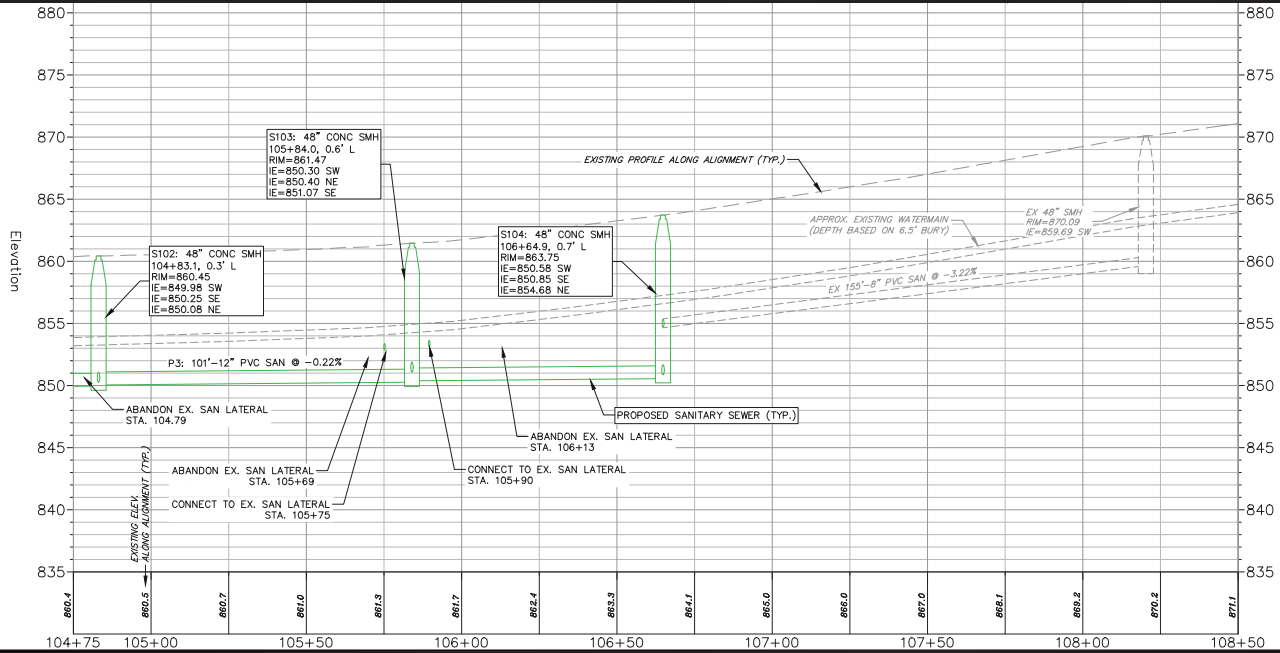
NO.	DATE	REVISIONS	REMARKS

DATE: 2/6/2026
 DRAFTER: BBAR
 CHECKED: SCHU
 PROJECT NO.: 210200

C501



NOT FOR CONSTRUCTION



PLAN & PROFILE SHEET - GILMAN STREET SANITARY SEWER
 THE STANDARD - 411-433 GILMAN STREET
 CITY OF MADISON
 DANE COUNTY, WI

NO.	DATE	REVISIONS	REMARKS

DATE: 2/6/2026
 DRAFTER: BBAR
 CHECKED: SCHU
 PROJECT NO.: 210200

C502

