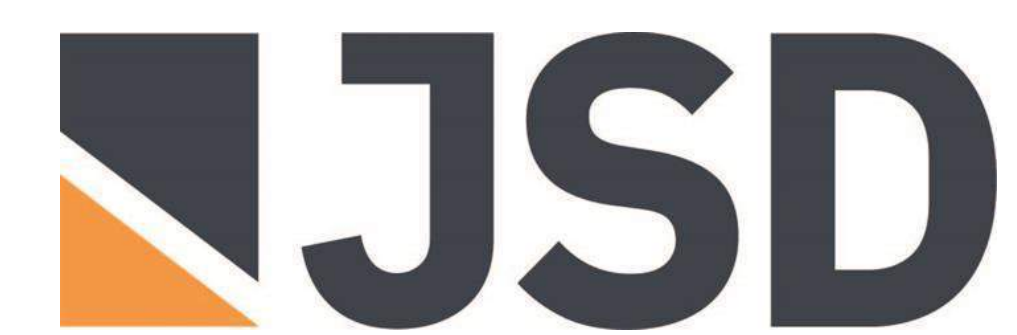
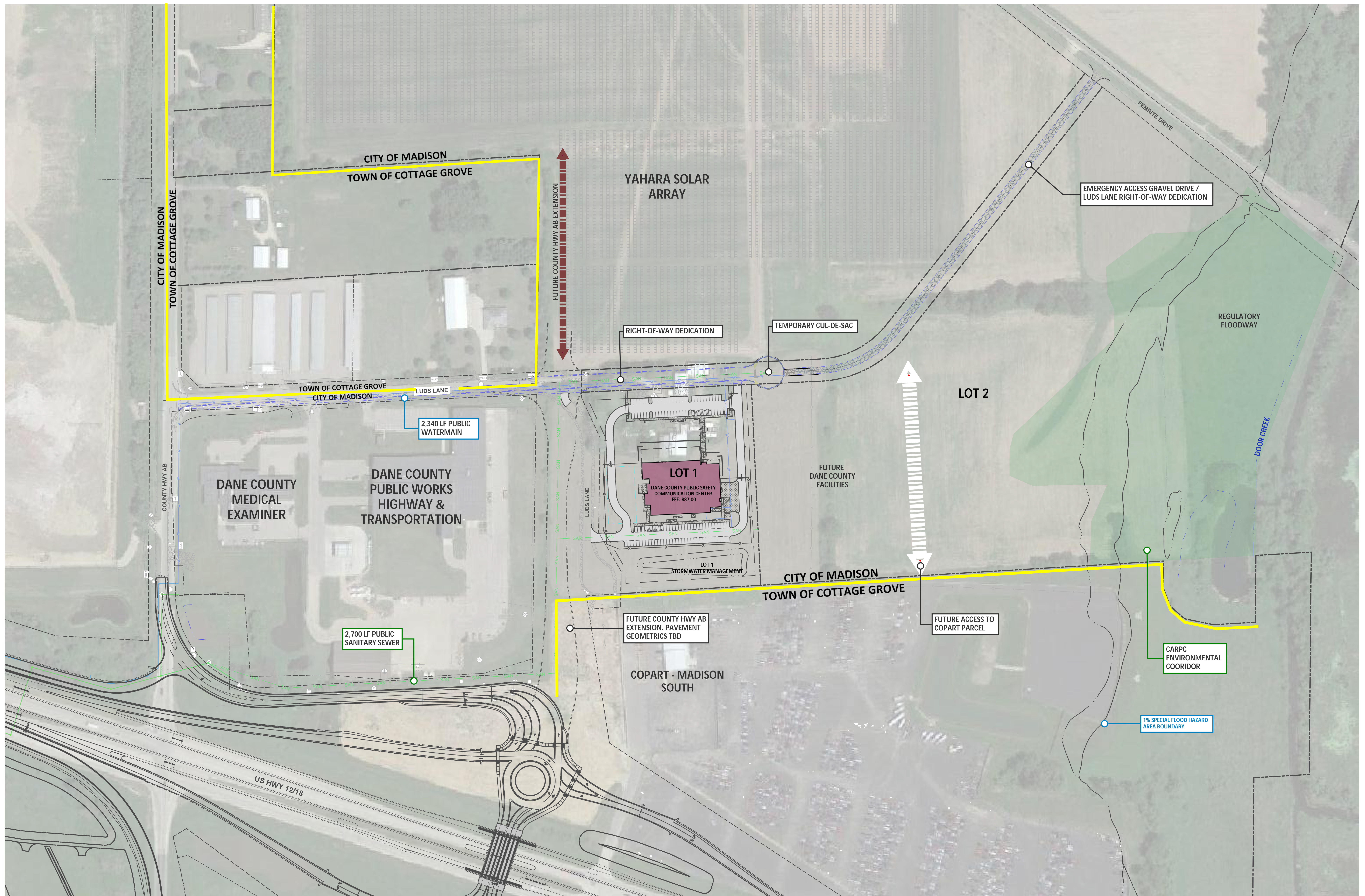


YAHARA HILLS NEIGHBORHOOD DEVELOPMENT PLAN DANE COUNTY EAST CAMPUS

PUBLIC SAFETY COMMUNICATIONS FACILITY



**UDC INITIAL / FINAL PRESENTATION
11.08.2023**





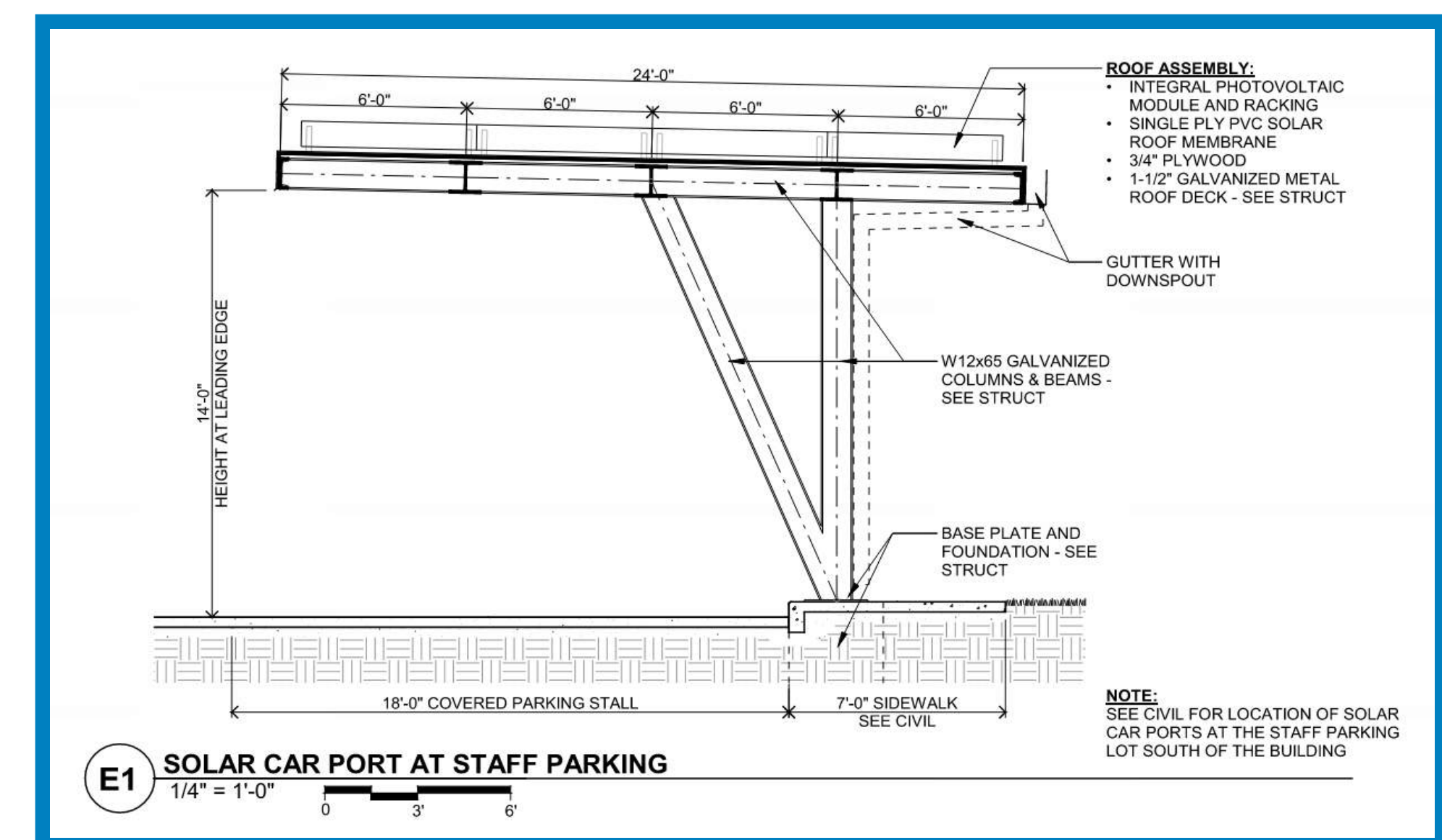
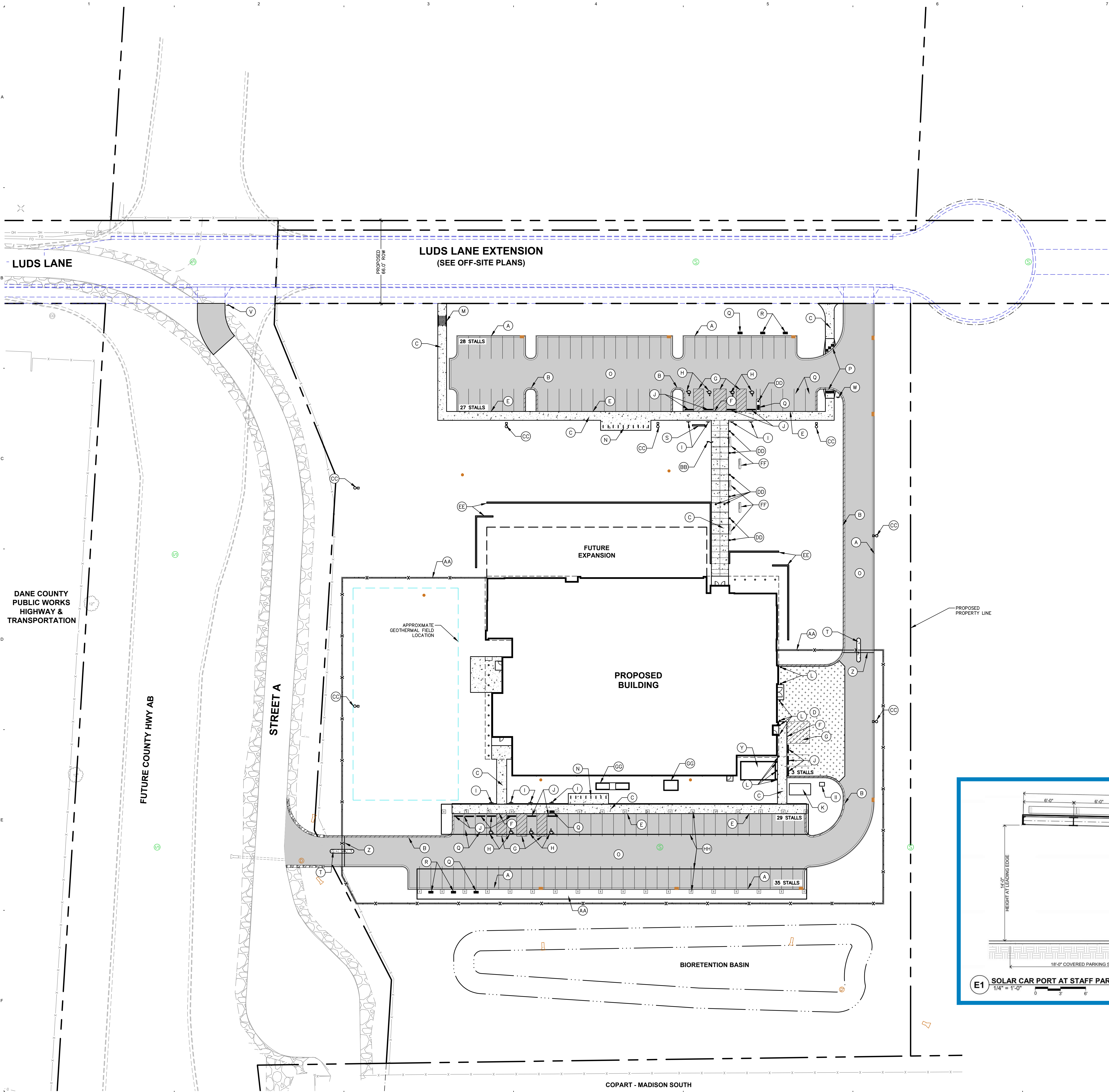




SITE INFORMATION BLOCK	
SITE ADDRESS	3087 LUDS LANE, MCFARLAND, WI 53558
PROPERTY ACREAGE	276,882 SF 6.36 ACRES
NUMBER OF BUILDING STORIES	1
TOTAL BUILDING SQUARE FOOTAGE	34,092 SF
NUMBER OF PARKING STALLS	
STANDARD	107
EV CHARGING	4
EV READY (CURRENTLY STANDARD STALLS)	8
ACCESSIBLE	6
EV CHARGING ACCESSIBLE	2
TOTAL	119
NUMBER OF BICYCLE STALLS	36
EXISTING VS. PROPOSED SITE COVERAGE	
EXISTING IMPERVIOUS SURFACE AREA	12,939 SF
EXISTING PERVIOUS SURFACE AREA	263,943 SF
EXISTING IMPERVIOUS SURFACE AREA RATIO	0.05
PROPOSED IMPERVIOUS SURFACE AREA	106,193 SF
PROPOSED PERVIOUS SURFACE AREA	170,689 SF
PROPOSED IMPERVIOUS SURFACE AREA RATIO	0.38

KEY

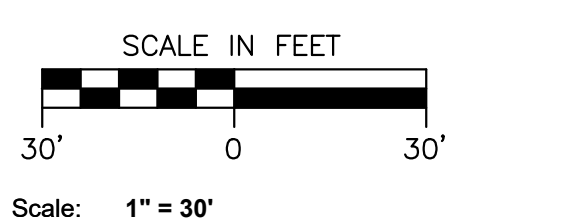
- (A) STANDARD 18" CURB AND GUTTER
- (B) REJECT 18" CURB AND GUTTER
- (C) CONCRETE SIDEWALK
- (D) HEAVY DUTY CONCRETE
- (E) THICKENED EDGE SIDEWALK
- (F) THICKENED EDGE SIDEWALK - FLUSH WITH PAVEMENT (SEE GRADING PLAN)
- (G) DIAGONAL HATCH - SWSL/4" AT 45° @ 2'-0" O.C.
- (H) ACCESSIBLE PARKING SPACE TYP.
- (I) BOLLARD WITH ACCESSIBLE PARKING SIGN
- (J) RECYCLED RUBBERIZED CURB STOP
- (K) TRANSFORMER PAD (CONTRACTOR SHALL COORDINATE AND CONFIRM FINAL PLACEMENT)
- (L) BOLLARD
- (M) STAIRS AND RAILING
- (N) BIKE RACK
- (O) ASPHALT PAVEMENT
- (P) ADA ACCESSIBLE RAMP (SEE DETAIL)
- (Q) EV PARKING CHARGING POST (REFER TO ELECTRICAL)
- (R) EV READY CHARGING POST (REFER TO ELECTRICAL)
- (S) MONUMENT SIGN
- (T) GATE KEY CARD ACCESS (REFER TO ELECTRICAL)
- (U) SIGN - DO NOT ENTER
- (V) SIGN - STOP SIGN
- (W) SIGN - DIRECTIONAL
- (X) SIGN - EMERGENCY EXIT ONLY
- (Y) GENERATOR PAD (REFER TO MECHANICAL)
- (Z) FENCE GATE
- (AA) SECURITY FENCE W/ CONCRETE MAINTENANCE STRIP
- (BB) FLAG POLE (REFER TO ARCHITECTURAL/STRUCTURAL)
- (CC) LIGHT POLE (REFER TO ELECTRICAL)
- (DD) LED LIGHT BOLLARD (REFER TO ELECTRICAL)
- (EE) RETAINING WALL
- (FF) LIMESTONE BENCH (REFER TO LANDSCAPE)
- (GG) CONDENSATION UNITS (REFER TO MECHANICAL)
- (HH) COVERED PARKING (LIGHTING PROVIDED UNDER CANOPY) (REFER TO ARCHITECTURAL/STRUCTURAL)
- (II) DOCKING STATION (REFER TO ELECTRICAL)



**80% PROGRESS SET
NOT FOR CONSTRUCTION**

Comm: 22-11600
Date: OCTOBER 26, 2023
Drawn: MSS/IRH
Check: MRH

SITE PLAN - ANNOTATED



C300



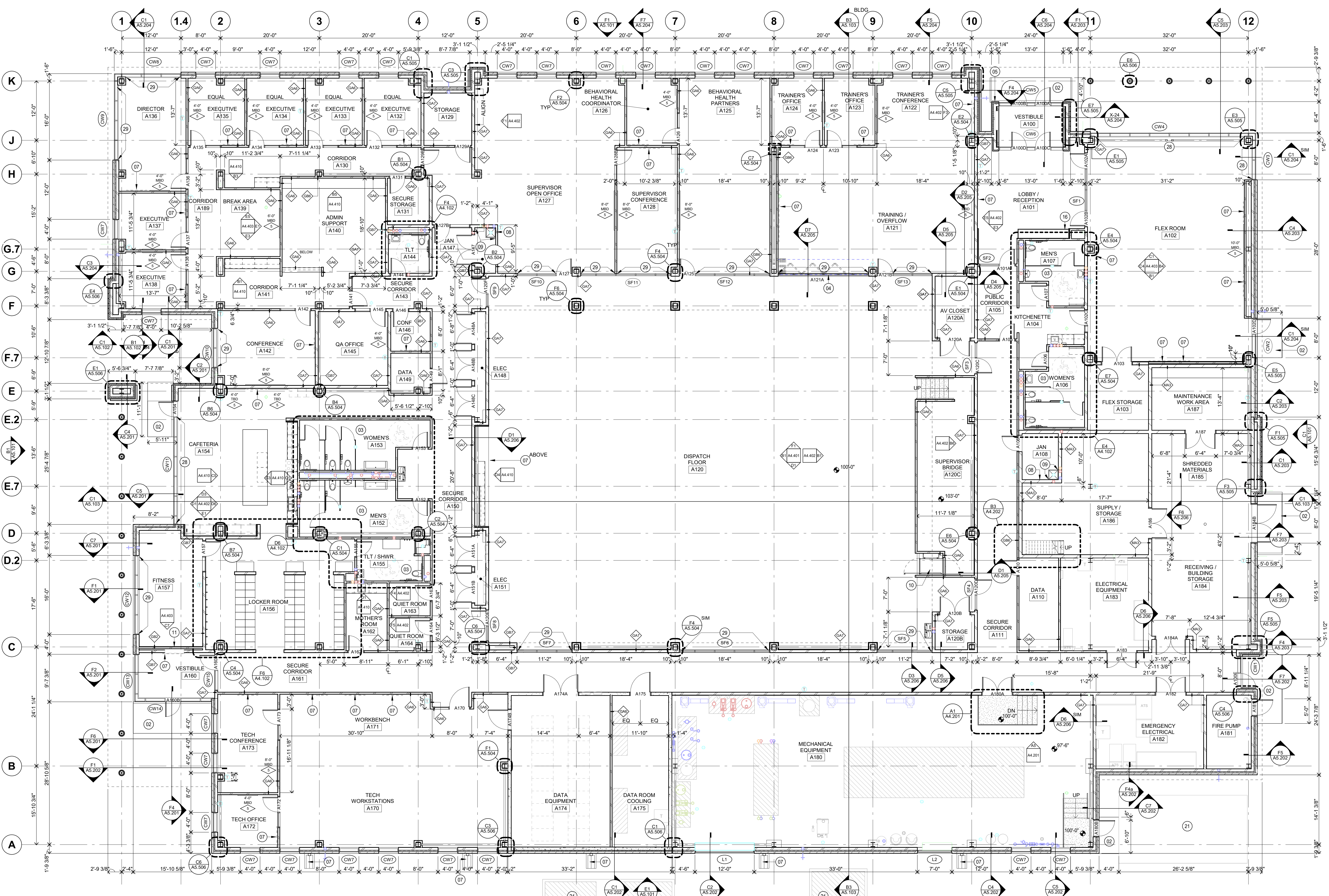
FLOOR PLAN KEY NOTES:

- 01 DOOR ACTUATORS
- 02 CONCRETE STOOP: SEE STRUCTURAL AND DETAIL
- 03 DEPRESSED CONCRETE SLAB AT RESTROOMS
- 04 INTERIOR FOLDING GLASS WALL - DOOR TYPE FGW
- 05 FIRE KNOX BOX: SEE SPECIFICATIONS
- 06 CABINET UNIT HEATER/CONVECTOR: SEE MECHANICAL FOR SPECIFICATIONS, COORDINATE LOCATION WITH MECHANICAL
- 07 WALL-MOUNTED TV: SEE TECHNOLOGY FOR SIZE & HEIGHT. SEE DETAIL FS44.101 FOR PLYWOOD BACKING INSTALLATION
- 08 MOP SINK: SEE MECHANICAL
- 09 FRP 48" A.F.F.: SEE SPECIFICATIONS 06 83 16
- 10 VERTICAL PLATFORM LIFT
- 11 FULL-HEIGHT MIRROR: SEE ELEVATION
- 12 STEEL LADDER - SEE 06 10 14 & 06 10 25
- 13 EXTERIOR LIGHTING - SEE ELECTRICAL
- 14 CARD READER: SEE TECHNOLOGY
- 15 MAGNETIC HOLD OPEN: SEE ELECTRICAL
- 16 DISPLAY CASE: SEE INTERIOR ELEVATION
- 17 BOLLARD - SEE DETAIL B4/A6.001
- 18 WALL HYDRANT/HOSE BIB: SEE MECHANICAL
- 19 SERVICE SINK: SEE MECHANICAL

FLOOR PLAN GENERAL NOTES

- 1. ALL PLAN DIMENSIONS ARE TO FACE OF WALL. SEE WALL TYPES FOR ACTUAL THICKNESS.
- 2. ALL INTERIOR PARTITIONS ARE TYPE GB2 UNLESS NOTED OTHERWISE.
- 3. ALL CONCRETE BLOCK WALLS ARE TO BE 8 INCHES THICK (NOMINAL) UNLESS NOTED OTHERWISE.
- 4. COORDINATE SIZE AND LOCATION OF ALL DUCT AND SHAFT OPENINGS IN WALLS AND FLOORS W/ MECH AND ELEC. PROVIDE ALL REQUIRED LINTELS FOR OPENINGS. SEE LINTEL SCHEDULE.
- 5. FIELD VERIFY ALL MILLWORK OPENINGS.
- 6. SET FLOOR DRAINS 3/4" BELOW FINISHED CONCRETE FLOORS UNLESS NOTED OTHERWISE. PROVIDE CONSISTENT SLOPE FROM WALL TO DRAIN BY SLOPING CONCRETE, MIN. 1/4" PER FOOT.
- 7. COORDINATE LOCATION, SIZE AND QUANTITY OF ALL MECHANICAL AND ELECTRICAL EQUIPMENT PADS.
- 8. ALL DOOR / SIDELITE OPENINGS TO BEGIN 4" FROM ADJACENT WALL UNLESS NOTED OTHERWISE.
- 9. ALL INTERIOR GWB / METAL STUD PARTITIONS TO BE CENTERED ON GRID UNLESS NOTED OTHERWISE.
- 10. FIRE RATED WALLS ARE INDICATED ON CODE PLANS.
- 20 OVERFLOW DOWNSPOUT / SCUPPER
- 21 CONCRETE EQUIPMENT PAD - COORDINATE SIZE WITH MECHANICAL & ELECTRICAL EQUIPMENT
- 26 PROVIDE WALL MOUNTED FIRE EXTINGUISHER PER SPECIFICATIONS
- 27 PROVIDE RECESSED CABINET AND FIRE EXTINGUISHER PER SPECIFICATIONS
- 28 MOTORIZED ROLLER SHADES - SEE MATERIAL FINISH SCHEDULE
- 29 MANUAL ROLLER SHADES - SEE MATERIAL FINISH SCHEDULE

MN



F1 MAIN LEVEL FLOOR PLAN
1/8" = 1'-0"

I hereby certify that this plan, specification or report was prepared by me or under my direct supervision and that I am a duly Licensed ARCHITECT under the laws of the State of Wisconsin

Arch Name		
License Number	Arch Num	Issue Date

Description	Revisions	
	Date	Num

Comm: 223081
Date: November 8, 2023
Drawn: TCNY
Check: MB

MAIN FLOOR PLAN

UDC PRESENTATION NOT FOR CONSTRUCTION



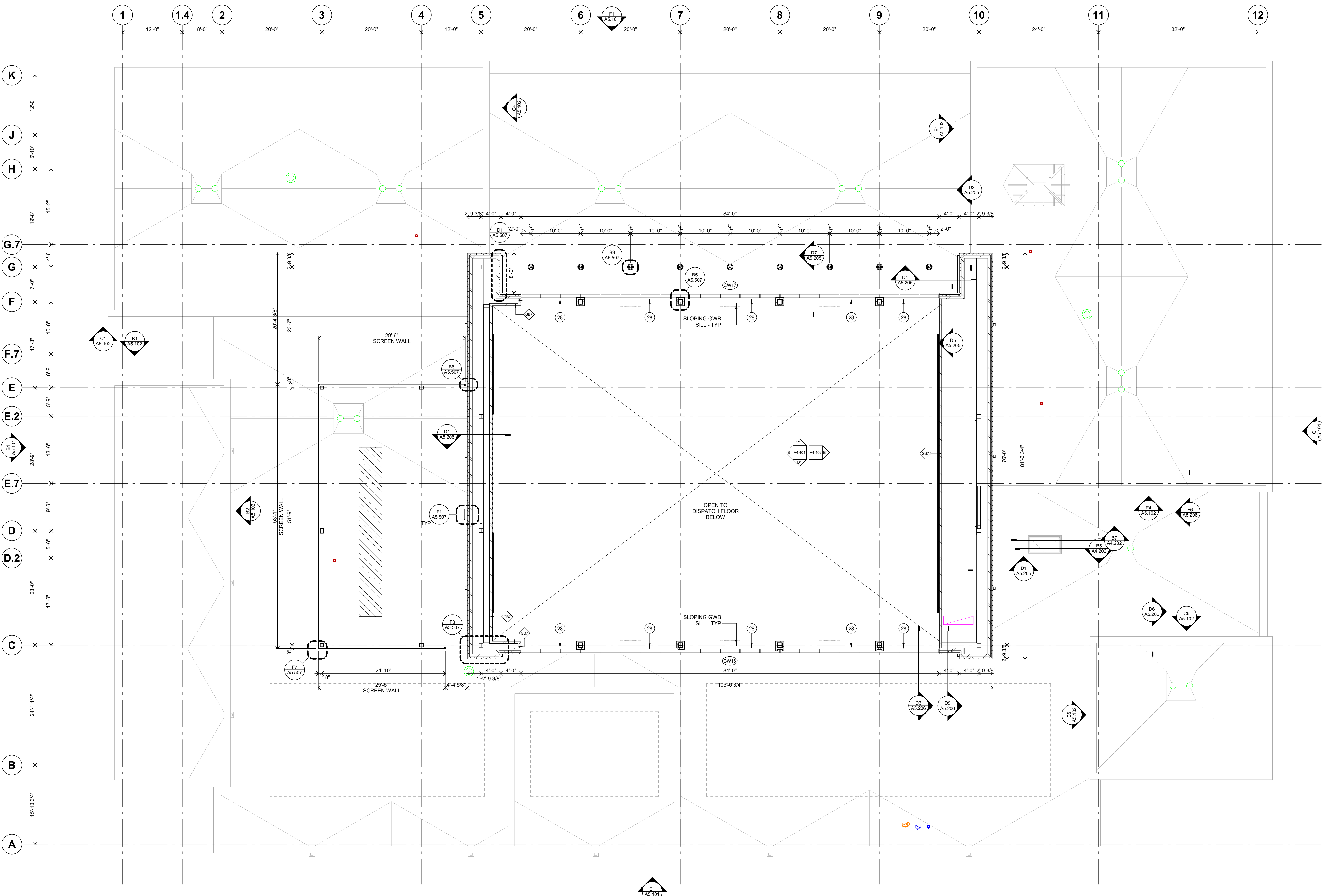
FLOOR PLAN KEY NOTES:

- 01 DOOR ACTUATORS
- 02 CONCRETE STOOP: SEE STRUCTURAL AND DETAIL
- 03 DEPRESSED CONCRETE SLAB AT RESTROOMS
- 04 INTERIOR FOLDING GLASS WALL - DOOR TYPE FGW
- 05 FIRE KNOX BOX: SEE SPECIFICATIONS
- 06 CABINET UNIT HEATER/ CONVECTOR: SEE MECHANICAL FOR SPECIFICATIONS. COORDINATE LOCATION WITH MECHANICAL.
- 07 WALL-MOUNTED TV: SEE TECHNOLOGY FOR SIZE & HEIGHT. SEE DETAIL F5A4.101 FOR PLYWOOD BACKING INSTALLATION
- 08 MOP SINK: SEE MECHANICAL
- 09 FRP 48" A.F.F.: SEE SPECIFICATIONS 06 83 16
- 10 VERTICAL PLATFORM LIFT
- 11 FULL HEIGHT MIRROR: SEE ELEVATION
- 12 STEEL LADDER - SEE 06 10 14 & 06 10 25
- 13 EXTERIOR LIGHTING - SEE ELECTRICAL
- 14 CARD READER: SEE TECHNOLOGY
- 15 MAGNETIC HOLD OPEN: SEE ELECTRICAL
- 16 DISPLAY CASE: SEE INTERIOR ELEVATION
- 17 BOLLARD - SEE DETAIL B4/A6.001
- 18 WALL HYDRANT/ HOSE BIB: SEE MECHANICAL
- 19 SERVICE SINK: SEE MECHANICAL
- 20 OVERFLOW DOWNSPOUT / SCUPPER
- 21 CONCRETE EQUIPMENT PAD - COORDINATE SIZE WITH MECHANICAL & ELECTRICAL EQUIPMENT
- 22 PROVIDE WALL MOUNTED FIRE EXTINGUISHER PER SPECIFICATIONS.
- 23 PROVIDE RECESSED CABINET AND FIRE EXTINGUISHER PER SPECIFICATIONS.
- 24 MOTORIZED ROLLER SHADES - SEE MATERIAL FINISH SCHEDULE
- 25 MANUAL ROLLER SHADES - SEE MATERIAL FINISH SCHEDULE

FLOOR PLAN GENERAL NOTES

1. ALL PLAN DIMENSIONS ARE TO FACE OF WALL. SEE WALL TYPES FOR ACTUAL THICKNESS.
2. ALL INTERIOR PARTITIONS ARE TYPE GB2 UNLESS NOTED OTHERWISE.
3. ALL CONCRETE BLOCK WALLS ARE TO BE 8 INCHES THICK (NORMAL) UNLESS NOTED OTHERWISE.
4. COORDINATE SIZE AND LOCATION OF ALL DUCT AND SHAFT OPENINGS IN WALLS AND FLOORS W/ MECH AND ELEC. PROVIDE ALL REQUIRED LINTELS FOR OPENINGS. SEE LINTEL SCHEDULE.
5. FIELD VERIFY ALL MILLWORK OPENINGS.
6. SET FLOOR DRAINS 3/4" BELOW FINISHED CONCRETE FLOORS UNLESS NOTED OTHERWISE. PROVIDE CONSISTENT SLOPE FROM WALL TO DRAIN BY SLOPING CONCRETE. MIN. 1/4" PER FOOT.
7. COORDINATE LOCATION, SIZE AND QUANTITY OF ALL MECHANICAL AND ELECTRICAL EQUIPMENT PADS.
8. ALL DOOR / SIDELITE OPENINGS TO BEGIN 4" FROM ADJACENT WALL UNLESS NOTED OTHERWISE.
9. ALL INTERIOR GWB/ METAL STUD PARTITIONS TO BE CENTERED ON GRID UNLESS NOTED OTHERWISE.
10. FIRE RATED WALLS ARE INDICATED ON CODE PLANS.

MN



F1 CLERESTORY FLOOR PLAN
1/8" = 1'-0"

**UDC PRESENTATION
NOT FOR CONSTRUCTION**

I hereby certify that this plan, specification or report was prepared by me or under my direct supervision and that I am a duly Licensed ARCHITECT under the laws of the State of Wisconsin

Arch Name		
License Number	Date	Issue Date

Comm: 223081
Date: November 8, 2023
Drawn: TCNY
Check: MK

CLERESTORY PLAN



ROOF PLAN KEY NOTES:

- (01) THRU-WALL SCUPPER WITH GUTTER BOX, DOWNSPOUT AND SPLASH BLOCK (SEE A4/A6.001)
- (02) ROOF LADDER - REFER TO DETAIL
- (03) EXPANSION JOINT COVER - REFER TO DETAIL
- (04) SLOPE STRUCTURE WHERE HATCHED - SEE STRUCT
- (05) ROOF HATCH - 3'-0" W X 6'-0" L
- (06) ROOFTOP AIR HANDLING UNIT - SEE MECH
- (07) LOUVERED SCREEN WALL - SEE ELEVATIONS
- (08) EXTENDED PYRAMID SKYLIGHT
- (09) WALKWAY PAD / PAVERS

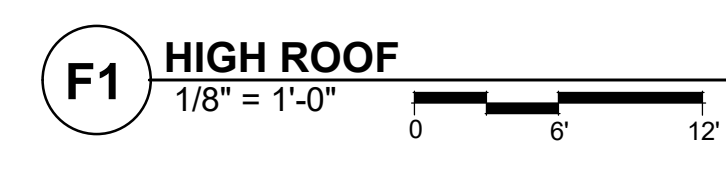
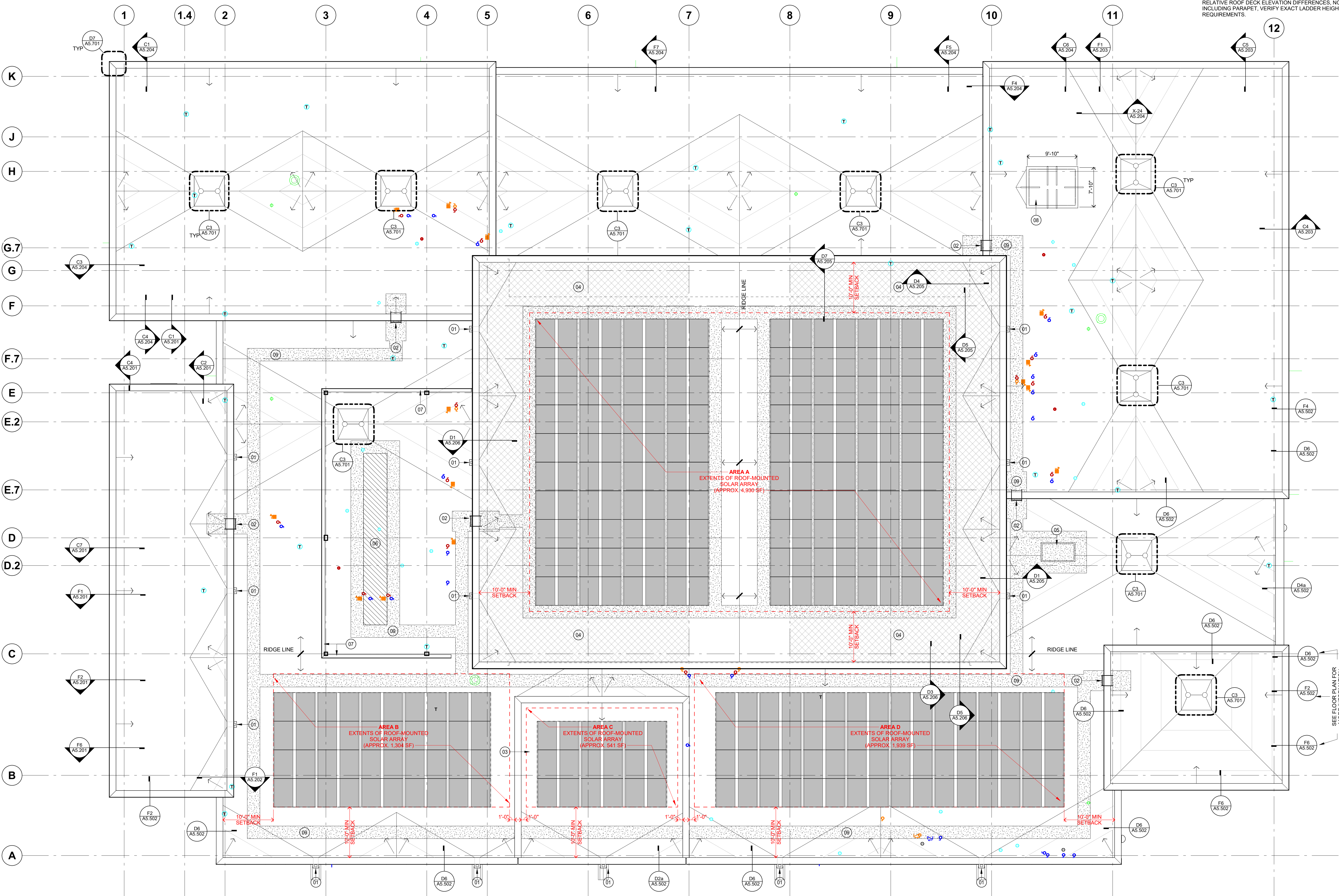
ROOF PLAN LEGEND

- ROOF DRAIN (R.D.)
- OVERFLOW DRAIN (O.R.D.)
- MECH HOOD
- EQUIPMENT CURB AT MECHANICAL EQUIPMENT
- ROOF EXHAUST
- EQUIPMENT CURB SUPPORTING PIPING OR CONDUIT. INSTALL MAXIMUM SPACING OF 6'-0" O.C.
- VENT STACK, PIPE OR CONDUIT
- COMBUSTION STACK
- CRICKET FOR POSITIVE DRAINAGE
- SLOPE OF TAPERED INSULATION
- DIAMOND CRICKET (SEE TYPICAL DETAIL)
- SLOPED STRUCTURE
- ROOF LADDER

ROOF PLAN GENERAL NOTES

1. TAPERED ROOF INSULATION AND CRICKETS SHALL SLOPE AT 1/4" PER 1'-0". THE THICKNESS OF THE BASE INSULATION IS TO BE 5 1/2".
2. SHOP DRAWING DESIGN AND INSTALLATION OF TAPERED INSULATION MUST ACCOUNT FOR CAMBER IN STRUCTURE TO INSURE THAT THE ROOF DRAINS AS DESIGNED.
3. AT MECH. OPENINGS AND CURBS ON ROOF, PROVIDE CRICKETS AS REQUIRED FOR POSITIVE DRAINAGE OR CUT OPENINGS IN FREE-STANDING CURBS AS AN ALTERNATIVE.
4. MECHANICAL ITEM LOCATIONS ARE SHOWN FOR REFERENCE ONLY. REFER TO MECH. DRAWINGS FOR EXTENT OF MECH. EQUIP. AND SIZE AND LOCATION OF ALL ROOF PENETRATIONS.
5. ALL MECHANICAL AND ELECTRICAL ROOFTOP EQUIPMENT, PIPING, CONDUIT, ETC. TO BE PAINTED.
6. COORDINATE ROOF AND OVERFLOW DRAIN LOCATIONS WITH STRUCTURAL COMPONENTS TO AVOID LOCATING ROOF OR OVERFLOW DRAINS OVER TOP OF BEAMS OR JOISTS.
7. REFER TO EXTERIOR ELEVATIONS FOR LOCATION OF OVERFLOW SCUPPERS AND OUTFLOWS.
8. AT ALL LADDERS, TOP AND BOTTOM, PROVIDE AND INSTALL A 4'-0" X 4'-0" CONCRETE PAVER LANDING.
9. ROOF LADDERS WITH NUMBER IN PARENTHESIS INDICATE RELATIVE ROOF DECK ELEVATION DIFFERENCES. NOT INCLUDING PARAPET, VERIFY EXACT LADDER HEIGHT REQUIREMENTS.

MN



UDC PRESENTATION
NOT FOR CONSTRUCTION

I hereby certify that this plan, specification or report was prepared by me or under my direct supervision and that I am a duly Licensed ARCHITECT under the laws of the State of Wisconsin

Arch Name		
License Number	Arch Num	Issue Date

Description	Revisions	
	Date	Num

Comm: 223081
Date: November 8, 2023
Drawn: Author
Check: Checker

ROOF PLAN

NEW PUBLIC SAFETY COMMUNICATIONS FACILITY

3087 Luds Ln
Madison, WI 53558

County of Dane
210 Martin Luther King Jr. Blvd
Madison, Wisconsin



WOLD ARCHITECTS AND ENGINEERS
332 Minnesota Street, Suite W2000
Saint Paul, MN 55101

woldae.com | 651.227.7773

MN



C1 AERIAL VIEW
NOT TO SCALE



C3 VIEW OF PUBLIC ENTRY
NOT TO SCALE



C6 VIEW FROM NORTHWEST
NOT TO SCALE



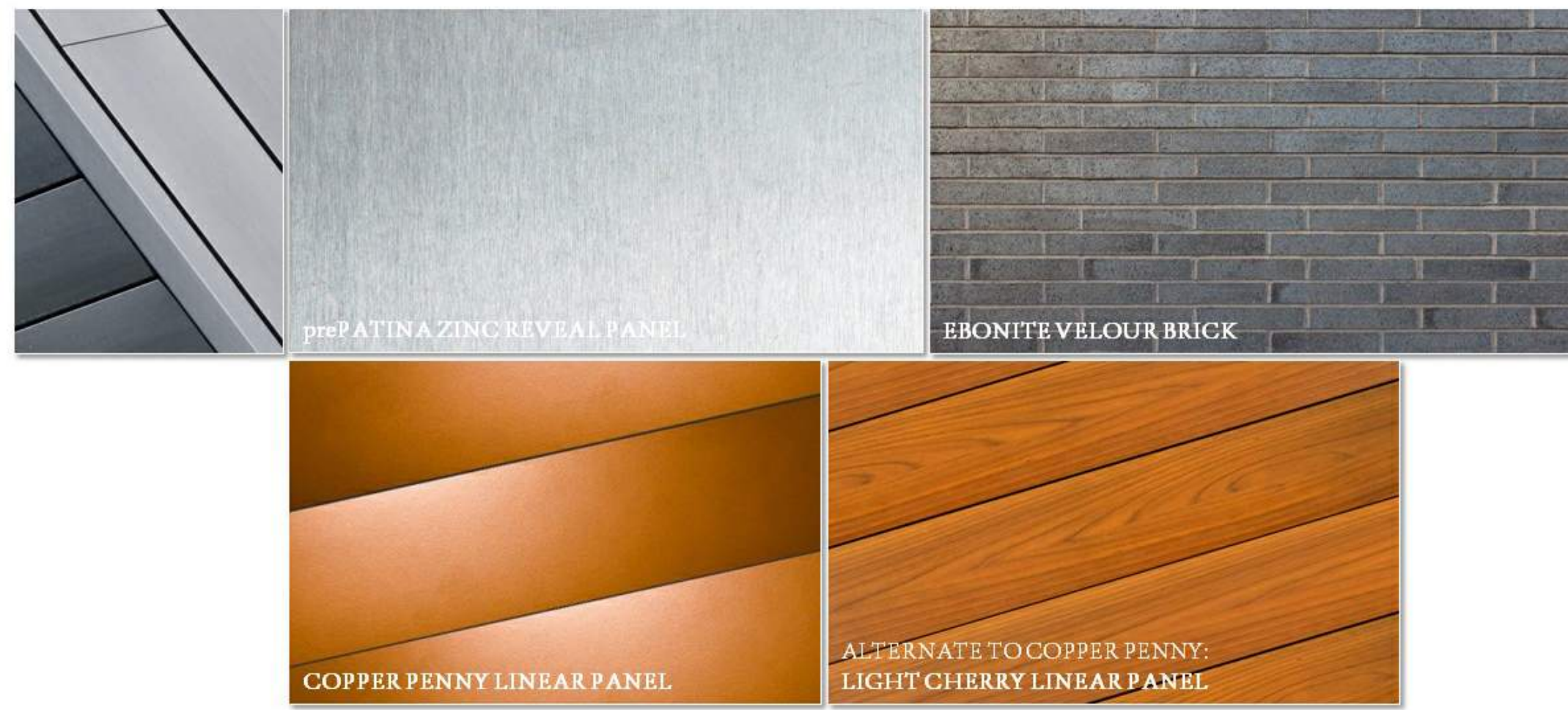
D1 VIEW OF WEST ELEVATION
NOT TO SCALE



D3 VIEW OF STAFF ENTRY
NOT TO SCALE



D6 VIEW OF RECEIVING / LOADING AREA
NOT TO SCALE



F3 EXTERIOR MATERIALS
NOT TO SCALE

I hereby certify that this plan, specification or report was prepared by me or under my direct supervision and that I am a duly Licensed ARCHITECT under the laws of the State of Wisconsin.

Description	Revisions	
	Date	Num

Comm: 223081
Date: November 8, 2023
Drawn: TC
Check: MK

CONCEPTUAL EXTERIOR PERSPECTIVES & MATERIALS

Scale: 12" = 1'-0"
A5.100

UDC PRESENTATION NOT FOR CONSTRUCTION

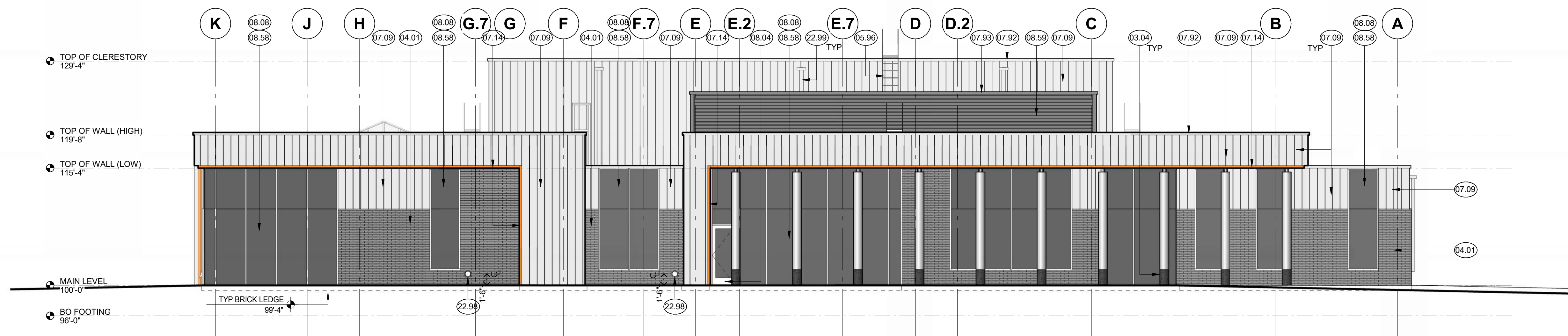
A

10/18/2023 10:59 AM P:\Projects\2023\23-00000000 - NEW PUBLIC SAFETY COMMUNICATIONS FACILITY\03 - PERMITS\03-01 - EXTERIOR PERSPECTIVES & MATERIALS.dwg
 User: tkim
 Plot: A5.100
 Scale: 12" = 1'-0"
 Title: CONCEPTUAL EXTERIOR PERSPECTIVES & MATERIALS

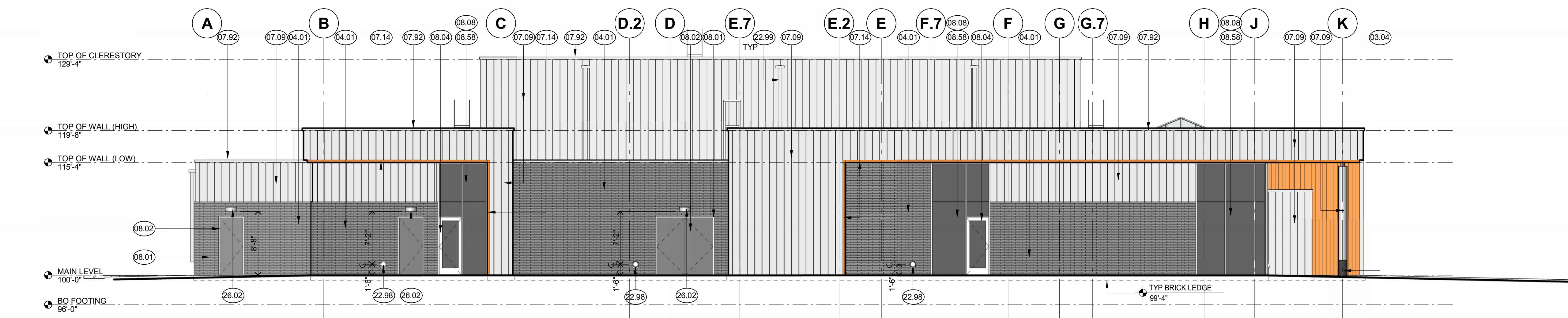


MATERIALS KEY	
KEY	MATERIAL
03.04	CAST STONE MASONRY (DARK CHARCOAL WITH SANDBLAST FINISH)
04.01	BRICK 1 (EBONITE VELOUR BRICK)
05.96	ROOF LADDER - EXPOSED GALVANIZED FINISH
07.09	METAL WALL PANEL (PRE-FORMED, PRE-PATINATED ZINC METAL RAINSCREEN PANEL)
07.14	ALUMINUM CLADDING (LIGHT CHERRY LINEAR METAL PLANK SOFFIT, WALL PANEL AND FASCIA)
07.92	PRE-FORMED PRE-PATINATED ZINC COPING
07.93	PRE-FORMED PRE-FINISHED METAL COPING TO MATCH PT-1A
08.01	HOLLOW METAL FRAME - PAINT PT-1A
08.02	HOLLOW METAL DOOR - PAINT PT-1A
08.04	ANODIZED ALUMINUM DOOR
08.08	ANODIZED ALUMINUM CURTAIN WALL FRAME
08.58	EXTERIOR GLAZING - REFER TO CURTAIN WALL ELEVATIONS FOR GLASS TYPES
08.59	PREFINISHED METAL LOUVER - COLOR TO MATCH PT-1A
22.98	OVERFLOW ROOF DRAIN DOWNSPOUT NOZZLE (SEE MECH)
22.99	ROOF SCUPPER, GUTTER BOX AND DOWNSPOUT
26.02	EXTERIOR LIGHT FIXTURE - SEE ELEC

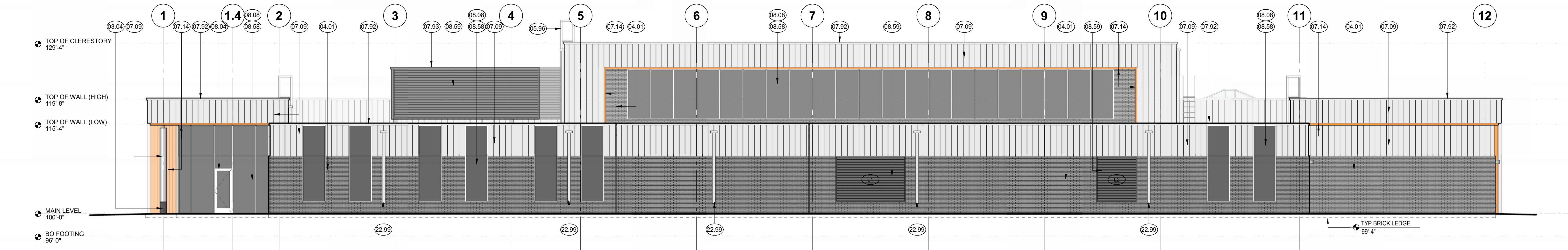
MN



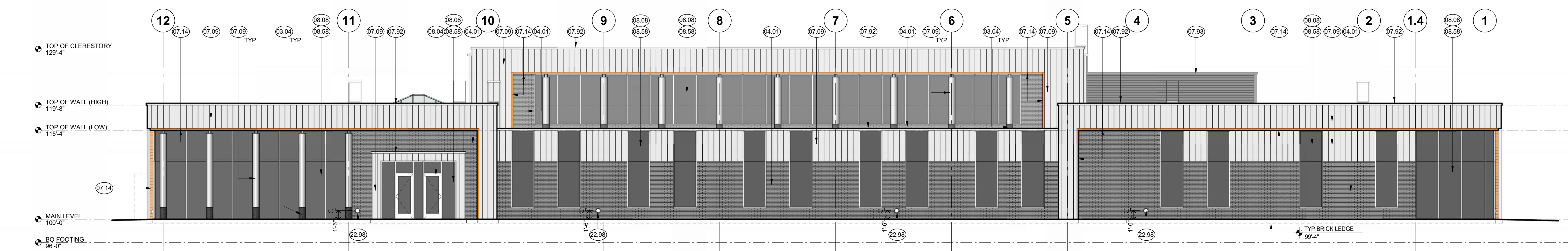
B1 OVERALL WEST ELEVATION
1/8" = 1'-0"
0 6 12



C1 OVERALL EAST ELEVATION
1/8" = 1'-0"
0 6 12



E1 OVERALL SOUTH ELEVATION
1/8" = 1'-0"
0 6 12



F1 OVERALL NORTH ELEVATION
1/8" = 1'-0"
0 6 12

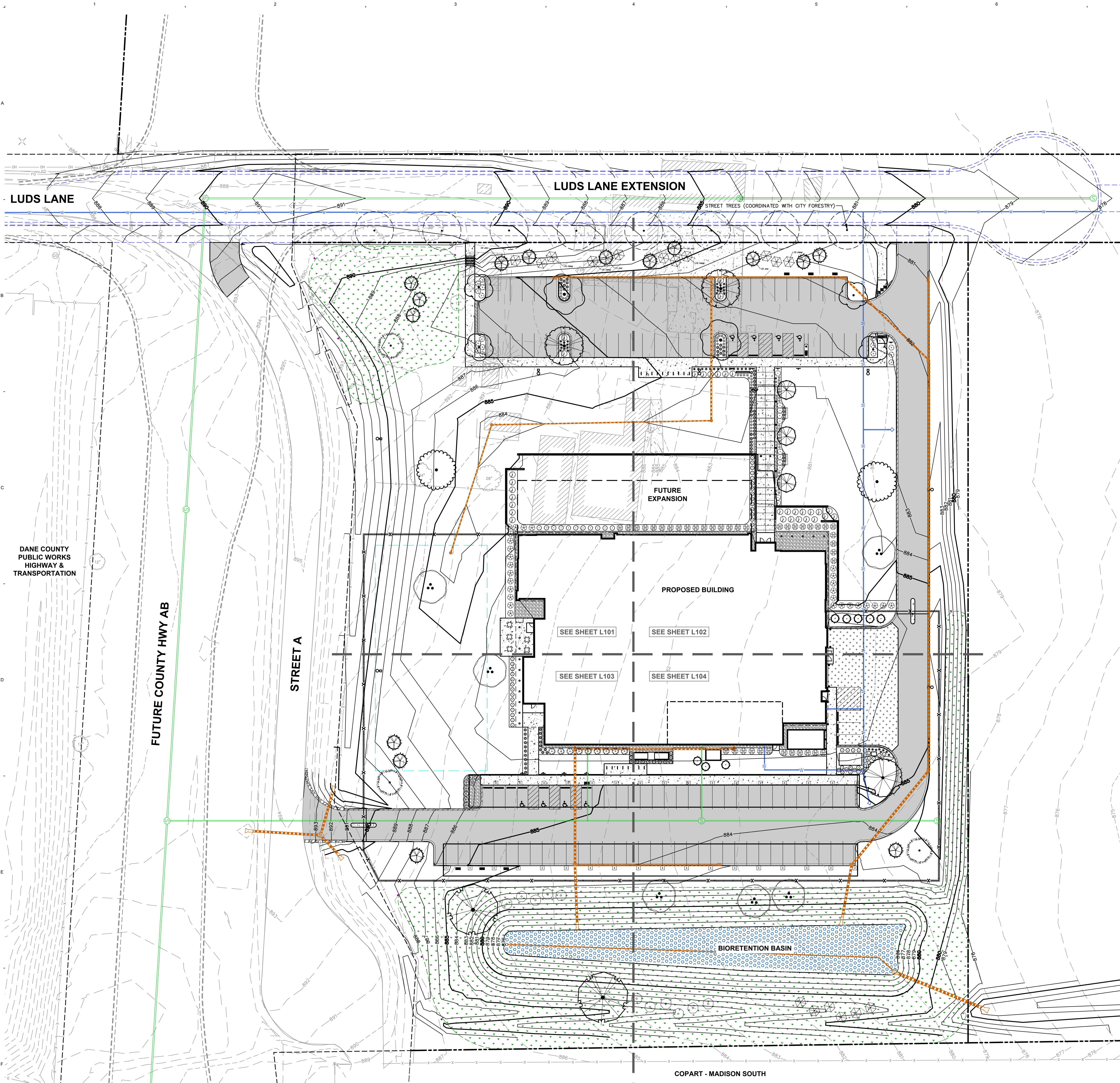
I hereby certify that this plan, specification or report was prepared by me or under my direct supervision and that I am a duly Licensed ARCHITECT under the laws of the State of Wisconsin

Arch Name _____
License Number: Arch Num _____ Date: Issue Date _____

Description	Revisions	
	Date	Num

Comm: 223081
Date: November 8, 2023
Drawn: TC
Check: MK

EXTERIOR ELEVATIONS



LEGEND

[Symbol]	PROPERTY LINE
[Symbol]	RIGHT-OF-WAY
[Symbol]	EASEMENT LINE
[Symbol]	BUILDING OUTLINE
[Symbol]	BUILDING OVERHANG
[Symbol]	EDGE OF PAVEMENT
[Symbol]	STANDARD CURB AND GUTTER
[Symbol]	REJECT CURB AND GUTTER
[Symbol]	ASPHALT PAVEMENT
[Symbol]	CONCRETE PAVEMENT
[Symbol]	HEAVY DUTY CONCRETE PAVEMENT
[Symbol]	PROPOSED 1 FOOT CONTOUR
[Symbol]	PROPOSED 5 FOOT CONTOUR
[Symbol]	EXISTING 1 FOOT CONTOUR
[Symbol]	EXISTING 5 FOOT CONTOUR
[Symbol]	STORMWATER MANAGEMENT AREA
[Symbol]	SANITARY SEWER
[Symbol]	WATERMAIN
[Symbol]	STORM SEWER
[Symbol]	EXISTING SANITARY SEWER
[Symbol]	EXISTING WATERMAIN
[Symbol]	EXISTING STORM SEWER
[Symbol]	SEAT/SAFETY WALL
[Symbol]	FENCE
[Symbol]	LIGHT POLE (REFER TO PHOTOMETRIC PLAN)
[Symbol]	ADA PARKING SIGN
[Symbol]	FLAG POLE
[Symbol]	BOLLARD
[Symbol]	BIKE RACK
[Symbol]	ALUMINUM EDGING
[Symbol]	NATIVE VEGETATIVE MAT
[Symbol]	PRAIRIE SEED MIX
[Symbol]	DECORATIVE STONE MULCH
[Symbol]	PRAIRIE PLANTING SIGN

- CONTRACTOR NOTES**
1. ALL DISTURBED AREAS TO RECEIVE SEED, FERTILIZER, AND MULCH UNLESS OTHERWISE SPECIFIED.
 2. ALL PLANTING AREAS TO RECEIVE SHREDDED HARDWOOD BARK MULCH UNLESS OTHERWISE SPECIFIED.

PLANT SCHEDULE

EVERGREEN TREE	CODE	BOTANICAL / COMMON NAME
[Symbol]	PIGLD	<i>Picea glauca 'Densata'</i> Black Hills Spruce
ORNAMENTAL TREES	CODE	BOTANICAL / COMMON NAME
[Symbol]	AMEL	<i>Amelanchier laevis 'JFS-Arb'</i> Spring Flurry® Allegheny Serviceberry
OVERSTORY DECIDUOUS TREES	CODE	BOTANICAL / COMMON NAME
[Symbol]	BENI	<i>Betula nigra 'BNMT'</i> TM Dura Heat River Birch
[Symbol]	CEOC	<i>Celtis occidentalis 'Prairie Pride'</i> Prairie Pride Hackberry
[Symbol]	GIBI	<i>Ginkgo biloba 'Autumn Gold'</i> TM Autumn Gold Maidenhair Tree
[Symbol]	GLTR	<i>Gleditsia triacanthos inermis 'Shademaster'</i> TM Shademaster Locust
[Symbol]	PTKC	<i>Gymnocladus dioica 'J.C. McDaniel'</i> TM Prairie Titan Kentucky Coffeetree
[Symbol]	QUBI	<i>Quercus bicolor</i> Swamp White Oak
UPRIGHT EVERGREEN SHRUB	CODE	BOTANICAL / COMMON NAME
[Symbol]	JUCHI	<i>Juniperus chinensis 'Iowa'</i> Iowa Juniper
[Symbol]	JVIC	<i>Juniperus virginiana 'Canaertii'</i> Canaertii Eastern Redcedar
DECIDUOUS SHRUBS	CODE	BOTANICAL / COMMON NAME
[Symbol]	ARME	<i>Aronia melanocarpa 'Morton'</i> TM Iroquois Beauty Black Chokeberry
[Symbol]	CEPO	<i>Cephalanthus occidentalis</i> Butterbush
[Symbol]	CORSE	<i>Cornus sericea</i> Red Twig Dogwood
[Symbol]	DIEL	<i>Diervilla lonicera 'Jewel'</i> Jewel Bush Honeysuckle
[Symbol]	HYPK	<i>Hypericum kalmianum</i> Kalm St. Johnswort
[Symbol]	VIBD	<i>Viburnum dentatum 'KLMseventeen'</i> Little Joe™ Arrowwood Viburnum
EVERGREEN SHRUBS	CODE	BOTANICAL / COMMON NAME
[Symbol]	BUGV	<i>Buxus x 'Green Velvet'</i> Green Velvet Boxwood
[Symbol]	JUCHK	<i>Juniperus chinensis 'Pfitzerana Kallays Compacta'</i> Kally Pfitzer Compact Juniper
[Symbol]	PINM	<i>Pinus mugo 'Pumilio'</i> Dwarf Mugo Pine
PERENNIALS & GRASSES	CODE	BOTANICAL / COMMON NAME
[Symbol]	ALSU	<i>Allium x 'Summer Beauty'</i> Summer Beauty Allium
[Symbol]	DALP	<i>Dalea purpurea</i> Purple Prairie Clover
[Symbol]	PAVIN	<i>Panicum virgatum 'Northwind'</i> Northwind Switch Grass
[Symbol]	SCSCB	<i>Schizachyrium scoparium 'MinnblueA'</i> Blue Heaven® Little Bluestem
[Symbol]	SPHE	<i>Sporobolus heterolepis</i> Prairie Dropseed

NEW PUBLIC SAFETY COMMUNICATIONS FACILITY
3087 Luds Ln
Madison, WI 53558

County of Dane
210 Martin Luther King Jr. Blvd
Madison, Wisconsin



WOLD ARCHITECTS AND ENGINEERS
332 Minnesota Street, Suite W2000
Saint Paul, MN 55101
woldae.com | 651.227.7773



CREATE THE VISION TELL THE STORY
jsdinc.com
MADISON REGIONAL OFFICE
507 WEST VERONA AVENUE, SUITE 500
VERONA, WISCONSIN 53593
P. 608.848.5060

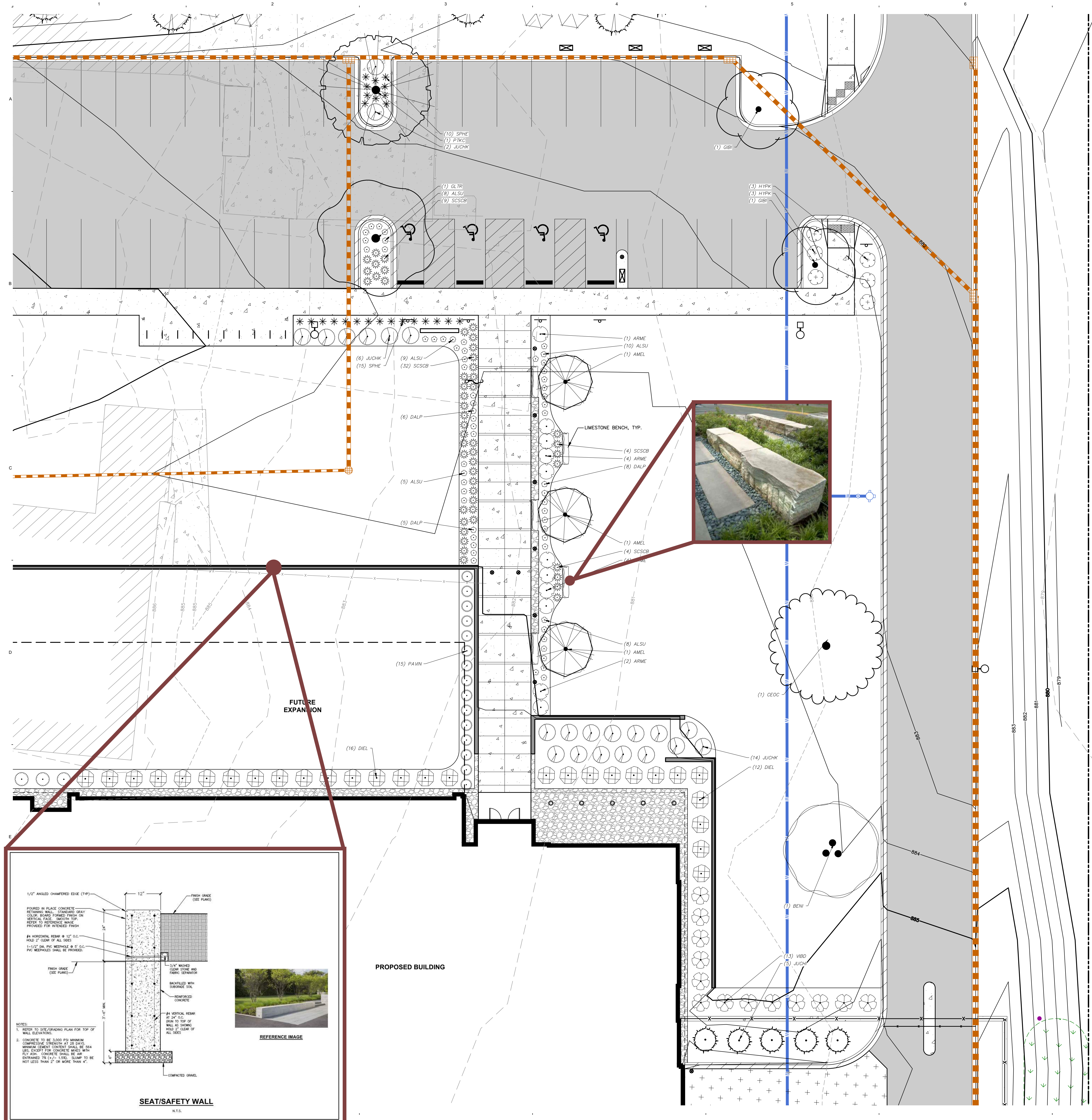
Comm: 22-11600
Date: OCTOBER 26, 2023
Drawn: MRA
Check: KJY

OVERALL LANDSCAPE PLAN

Scale: 1" = 30'

**80% PROGRESS SET
NOT FOR CONSTRUCTION**

L100

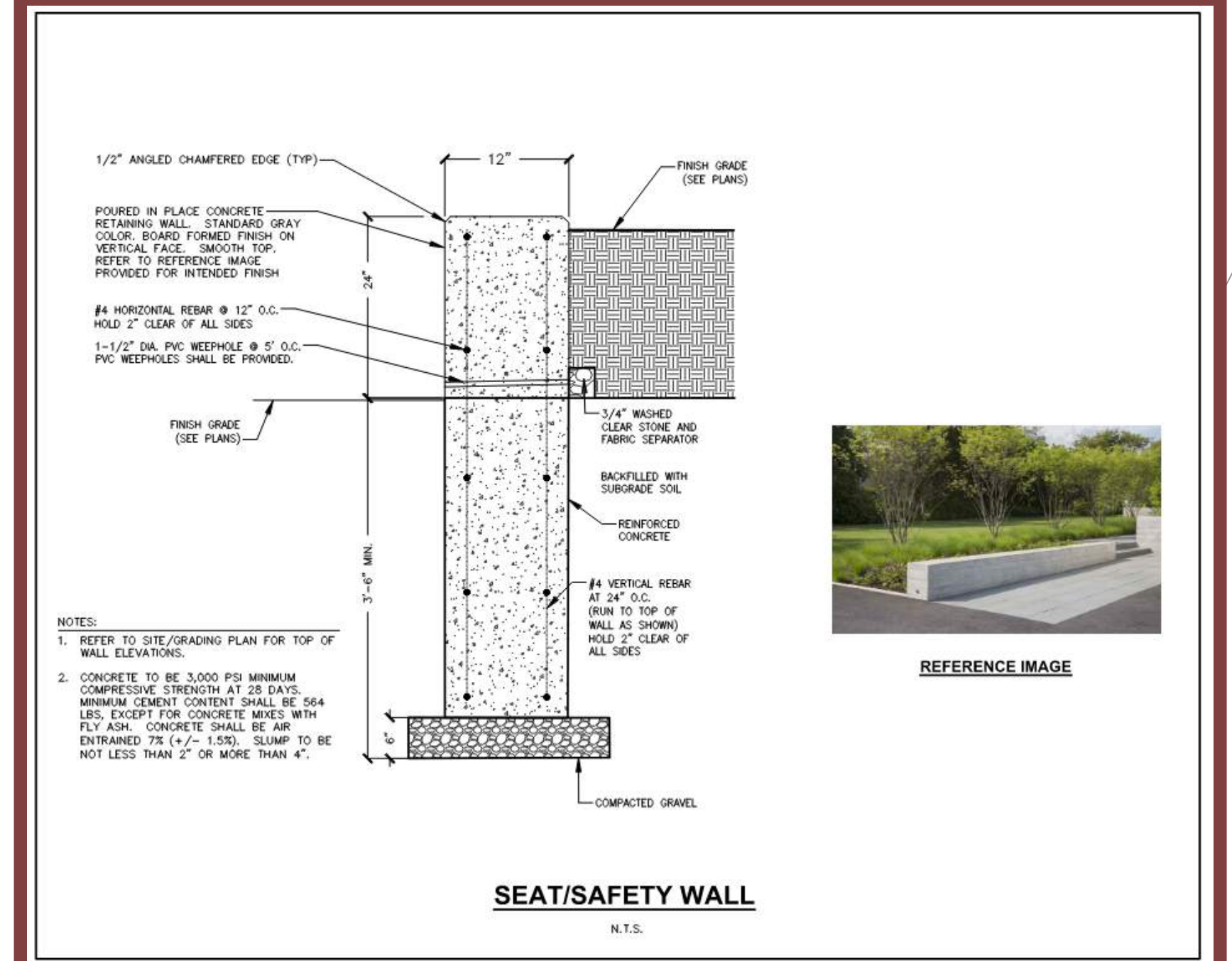


LEGEND

- PROPERTY LINE
- RIGHT-OF-WAY
- EASEMENT LINE
- BUILDING OUTLINE
- BUILDING OVERHANG
- EDGE OF PAVEMENT
- STANDARD CURB AND GUTTER
- REJECT CURB AND GUTTER
- ASPHALT PAVEMENT
- CONCRETE PAVEMENT
- HEAVY DUTY CONCRETE PAVEMENT
- PROPOSED 1 FOOT CONTOUR
- PROPOSED 5 FOOT CONTOUR
- EXISTING 1 FOOT CONTOUR
- EXISTING 5 FOOT CONTOUR
- STORMWATER MANAGEMENT AREA
- SANITARY SEWER
- WATERMAIN
- STORM SEWER
- EXISTING SANITARY SEWER
- EXISTING WATERMAIN
- EXISTING STORM SEWER
- SEAT/SAFETY WALL
- FENCE
- LIGHT POLE (REFER TO PHOTOMETRIC PLAN)
- ADA PARKING SIGN
- FLAG POLE
- BOLLARD
- BIKE RACK
- ALUMINUM EDGING
- NATIVE VEGETATIVE MAT
- PRAIRIE SEED MIX
- DECORATIVE STONE MULCH
- PRAIRIE PLANTING SIGN

PLANT SCHEDULE

EVERGREEN TREE	CODE	BOTANICAL / COMMON NAME
	PIGLD	<i>Picea glauca</i> 'densata' Black Hills Spruce
ORNAMENTAL TREES	CODE	BOTANICAL / COMMON NAME
	AMEL	<i>Amelanchier laevis</i> 'JFS-Arb' Spring Flurry® Allegheny Serviceberry
OVERSTORY DECIDUOUS TREES	CODE	BOTANICAL / COMMON NAME
	BENI	<i>Betula nigra</i> 'BNMTF'™ Dura Heat River Birch
	CEOC	<i>Celtis occidentalis</i> 'Prairie Pride' Prairie Pride Hackberry
	GIBI	<i>Ginkgo biloba</i> 'Autumn Gold'™ Autumn Gold Maidenhair Tree
	GLTR	<i>Gleditsia triacanthos inermis</i> 'Shademaster'™ Shademaster Locust
	PTKC	<i>Gymnocladus dioica</i> 'J.C. McDaniel'™ Prairie Titan Kentucky Coffeetree
	QUBI	<i>Quercus bicolor</i> Swamp White Oak
UPRIGHT EVERGREEN SHRUB	CODE	BOTANICAL / COMMON NAME
	JUCHI	<i>Juniperus chinensis</i> 'lowa' Iowa Juniper
	JIVC	<i>Juniperus virginiana</i> 'Canaerti' Canaerti Eastern Redcedar
DECIDUOUS SHRUBS	CODE	BOTANICAL / COMMON NAME
	ARME	<i>Aronia melanocarpa</i> 'Morton'™ Iraqus Beauty Black Chokeberry
	CEPO	<i>Cephalanthus occidentalis</i> Buttongloss
	CORSE	<i>Cornus sericea</i> Red Twig Dogwood
	DIEL	<i>Diervilla lonicera</i> 'Jewel' Jewel Bush Honeysuckle
	HYPK	<i>Hypericum kalmianum</i> Kalm St. Johnswort
	VIBD	<i>Viburnum dentatum</i> 'KLMseventeen' Little Joe™ Arrowwood Viburnum
EVERGREEN SHRUBS	CODE	BOTANICAL / COMMON NAME
	BUGV	<i>Buxus</i> x 'Green Velvet' Green Velvet Boxwood
	JUCHK	<i>Juniperus chinensis</i> 'Pfitzerana Kallays Compacta' Kally Pfitzer Compact Juniper
	PINM	<i>Pinus mugo</i> 'Pumilio' Dwarf Mugo Pine
PERENNIALS & GRASSES	CODE	BOTANICAL / COMMON NAME
	ALSU	<i>Allium</i> x 'Summer Beauty' Summer Beauty Allium
	DALP	<i>Dalea purpurea</i> Purple Prairie Clover
	PAVN	<i>Panicum virgatum</i> 'Northwind' Northwind Switch Grass
	SCSCB	<i>Schizachyrium scoparium</i> 'MinnblueA' Blue Heaven® Little Bluestem
	SPHE	<i>Sporobolus heterolepis</i> Prairie Dropseed



NEW PUBLIC SAFETY COMMUNICATIONS FACILITY
3087 Luds Ln
Madison, WI 53558

County of Dane
210 Martin Luther King Jr. Blvd
Madison, Wisconsin



WOLD ARCHITECTS AND ENGINEERS
332 Minnesota Street, Suite W2000
Saint Paul, MN 55101
woldac.com | 651.227.7773

JSD
CREATE THE VISION TELL THE STORY
jsdinc.com
MADISON REGIONAL OFFICE
507 WEST VERONA AVENUE, SUITE 500
VERONA, WISCONSIN 53593
P. 608.848.5060

80% PROGRESS SET
NOT FOR CONSTRUCTION

Scale: 1" = 10'
L102

NEW PUBLIC SAFETY COMMUNICATIONS FACILITY

3087 Luds Ln
Madison, WI 53558

County of Dane
210 Martin Luther King Jr. Blvd
Madison, Wisconsin



WOLD ARCHITECTS AND ENGINEERS
332 Minnesota Street, Suite W2000
Saint Paul, MN 55101

woldae.com | 651.227.7773

MN



C2 VIEW OF ENTRY FROM VISITOR PARKING
NOT TO SCALE

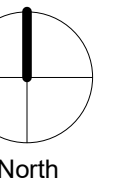


F2 VIEW OF PUBLIC ENTRY
NOT TO SCALE

I hereby certify that this plan, specification or report was prepared by me or under my direct supervision and that I am a duly Licensed ARCHITECT under the laws of the State of Wisconsin

Arch Name		
License Number	Arch Num	Issue Date

Comm: 223081
Date: November 8, 2023
Drawn: TC
Check: MK



ENTRY PERSPECTIVES

Scale: 1/2" = 1'-0"

**UDC PRESENTATION
NOT FOR CONSTRUCTION**

A5.104

A

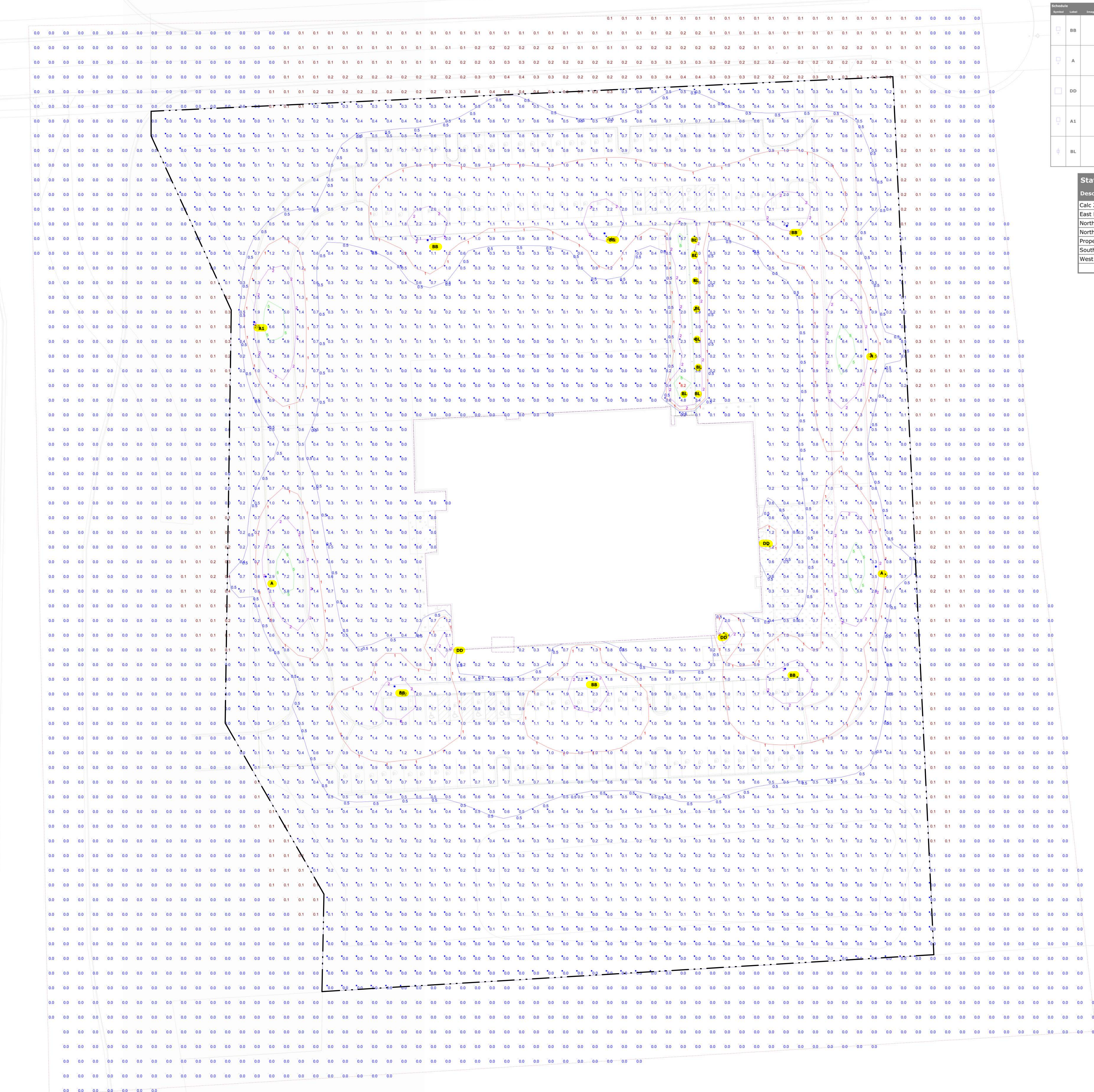


MN

E

Symbol	Label	Usage	UTM	Manufacturer	Category	Description	Quantity	Unit	Notes
BB						3087 Luds Ln - 3087 Luds Ln	1	EA	See Schedule
A						3087 Luds Ln - 3087 Luds Ln	1	EA	See Schedule
DD						3087 Luds Ln - 3087 Luds Ln	1	EA	See Schedule
A1						3087 Luds Ln - 3087 Luds Ln	1	EA	See Schedule
BL						3087 Luds Ln - 3087 Luds Ln	1	EA	See Schedule

Description	Avg	Max	Min	Max/Min	Avg/Min	Symbol
Calc Zone #1	0.4 fc	8.2 fc	0.0 fc	N/A	4.0:1	+
East Driveway at Grade	2.0 fc	7.2 fc	0.5 fc	14.4:1	4.0:1	+
North Lot at Grade	1.2 fc	2.4 fc	0.6 fc	4.0:1	2.0:1	+
North Walkway at Grade	3.1 fc	8.2 fc	0.1 fc	82.0:1	31.0:1	+
Property Walk at Grade	0.7 fc	8.2 fc	0.0 fc	N/A	N/A	+
South Lot at Grade	1.1 fc	2.3 fc	0.5 fc	4.6:1	2.2:1	+
West Driveway at Grade	1.6 fc	7.2 fc	0.1 fc	72.0:1	16.0:1	+
	3.0 fc	8.2 fc	0.1 fc	82.0:1	30.0:1	+



F2 SITE PHOTOMETRICS
N.T.S.

Plan View
Scale - 1" = 30'

I hereby certify that this plan, specification or report was prepared by me or under my direct supervision and that I am a duly Licensed PROFESSIONAL ENGINEER under the laws of the State of WISCONSIN

License: BRADLEY R. JOHANSEN
Number: 38976-006 Date: 6-9-2023

Description	Revisions	
	Date	Num

Comm: 223081
Date: October 2, 2023
Drawn: N.DEFRANCESCO
Check: B.JOHANSEN

SITE PHOTOMETRICS

Scale: N.T.S.
E1.01

**LAND USE / UDC SUBMITTAL
NOT FOR CONSTRUCTION**