



© 2012 BRIOHN DESIGN GROUP, LLC - CONCEPTUAL RENDERING

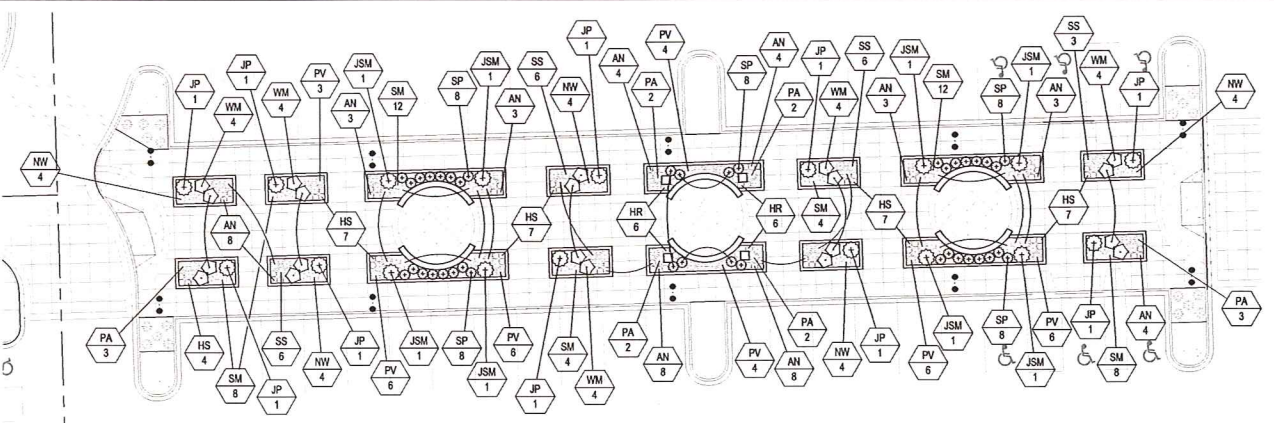


REVISIONS

NO.	DATE	DESCRIPTION

SCALE: 1" = 20'-0"
 DATE: 10/26/12
 DRAWN BY: JDS
 COPPS GROCERY

L1.0



PLAZA ENLARGEMENT - SHRUB & PERENNIAL PLANTING
 1" = 16'-0"

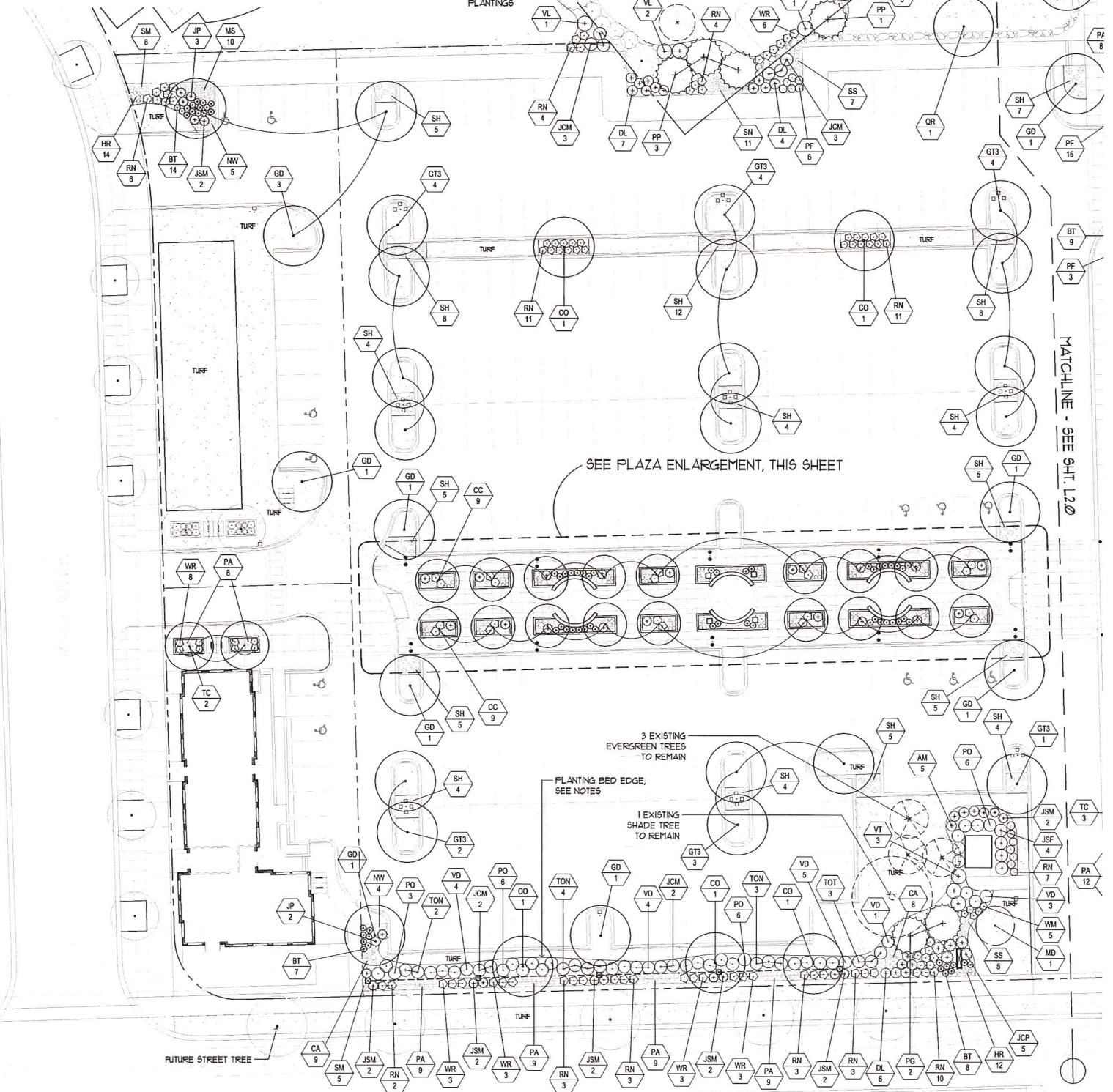
PLANTING REQUIREMENTS

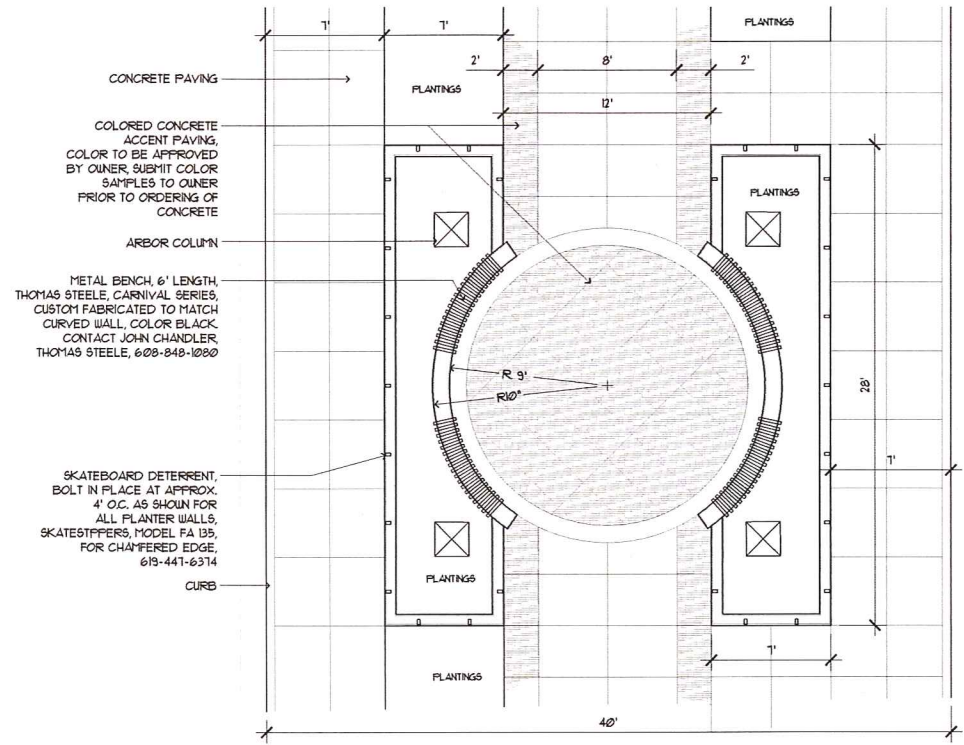
Number of Trees Required	
Number of Parking Stalls	288
Square Footage of Storage Area / 300	13
Number of Canopy Shade Trees Required	19
Number of Landscape Points Required	
Number of Points for Parking Stalls	1,118
Number of Points Required for Loading Areas	225 (3 berths x 75 pts/berth)
Number of Points Required	1,343

Element	Pt. Value	Qty.	Pts. Achieved	Qty.	Points	Total
Canopy Tree	35	49	1,715	1	35	
Deciduous Shrub	2	538	1,076			
Evergreen Shrub	3	221	663			
Evergreen Tree	15	44	660	3	45	
Total			4,310		80	4,390

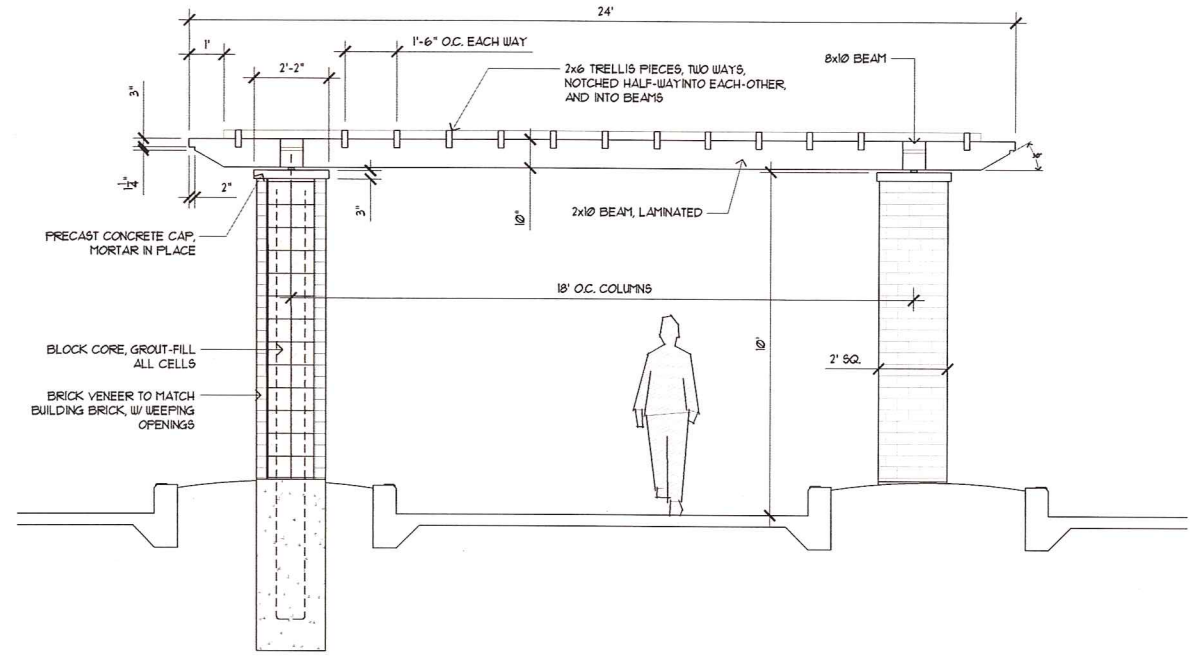
PLANTING SCHEDULE

SYM	BOTANICAL NAME	COMMON NAME	QTY	SIZE	COND	SPACING	PT VALUE	POINTS
Shade Trees								
AF	Acer x Freeman's Autumn Blaze	Autumn Blaze Maple	5	2.5' Cal	BB	As shown	35	175
CO	Celtis occidentalis 'Praine Pride'	Praine Pride Hackberry	6	2.5' Cal	BB	As shown	35	210
GT3	Gleditsia triacanthos 'Skyline'	Skyline Honeylocust	24	3' Cal	BB	As shown	35	840
GD	Gymnocladus dioica	Kentucky Coffee tree	16	2.5' Cal	BB	As shown	35	560
TC	Tilia cordata 'Greenspire'	Greenspire Littleleaf Linden	9	2.5' Cal	BB	As shown	35	315
GR	Quercus rubra	Red Oak	8	2.5' Cal	BB	As shown	35	280
Ornamental Trees								
AG	Aamelancher x 3 'Autumn Brilliance'	Autumn Brilliance Serviceberry	1	6' Ht/Mult	BB	As shown	15	15
CC	Carpinus caroliniana	Muscledwood/Blue Beech	18	2" Cal	B/B	As shown	15	270
MD	Malus x Donald Wyman	Donald Wyman Crabapple	4	1.5' Cal	BB	As shown	15	60
Evergreen Trees								
PG	Picea glauca var. densata	Black Hills Spruce	6	6' Ht	BB	As shown	15	90
PP	Picea pungens	Colorado Green Spruce	23	6' Ht	BB	As shown	15	345
PPG	Picea pungens 'Glauc'	Colorado Blue Spruce	5	6' Ht	BB	As shown	15	75
PN	Pinus nigra	Austrian Pine	6	6' Ht	BB	As shown	15	90
PS	Pinus sylvestris	Scots Pine	4	6' Ht	BB	As shown	15	60
Deciduous Shrubs								
AM	Aconitum napellus var. 'White Beauty'	White Beauty Monkshood	34	2 Gal	Container	48" o.c.	2	68
BT	Berberis l. s. 'nana' 'Crimson Pigmy'	Crimson Pigmy Barberry	46	2 Gal	Container	30" o.c.	2	92
DL	Diervilla lonicera	Dwarf Bush Honeysuckle	48	2 Gal	Container	48" o.c.	2	96
FS	Forsythia x 'Sunrise'	Surprise Forsythia	13	36" Ht	BB	60" o.c.	2	26
HP	Hydrangea paniculata 'Little Lamb'	Little Lamb Hydrangea	8	36" Ht	BB	60" o.c.	2	16
PO	Physocarpus opulifolius 'Diablo'	Diablo Ninebark	26	36" Ht	BB	60" o.c.	2	52
PF	Potentilla frut. 'Mokoy's White'	Mokoy's White Potentilla	70	2 Gal	Container	36" o.c.	2	140
RN	Rosa 'Newy Wild'	Newy Wild Rose	109	2 Gal	Container	36" o.c.	2	218
SP	Salix purpurea nana	Dwarf Arctic Willow	56	5 Gal	Container	48" o.c.	2	112
WM	Wegelia 'Munet'	Munet Weigela	55	2 Gal	Container	42" o.c.	2	110
WR	Wegelia 'Rhumbar'	Rhumbar Weigela	77	2 Gal	Container	42" o.c.	2	154
VD	Viburnum dentatum 'Autumn Jazz'	Autumn Jazz Arrowwood Viburnum	36	36" Ht	B/B	72" o.c.	2	72
VL	Viburnum lentago	Nannyberry Viburnum	28	36" Ht	BB	72" o.c.	2	56
VT	Viburnum trilobum 'Wentworth'	Wentworth Viburnum	30	30" Ht	BB	72" o.c.	2	60
Evergreen Shrubs								
JCM	Juniperus chinensis 'Munbatel'	Munbatel Juniper	14	5 Ht	BB	60" o.c.	3	42
JCP	Juniperus chinensis pfit. comp.	Compact Pfitzer Juniper	14	5 Gal	BB	60" o.c.	3	42
JP	Juniperus procumbens 'Nana'	Dwarf Juggernaut Juniper	32	2 Gal	Container	48" o.c.	3	96
JSC	Juniperus sabina 'Calgary Carpet'	Calgary Carpet Juniper	17	5 Gal	Container	60" o.c.	3	51
JSM	Juniperus sabina 'Mini Arcadia'	Mini Arcadia Juniper	27	5 Gal	Container	48" o.c.	3	81
JSF	Juniperus scopulorum 'Fairview'	Fairview Juniper	12	6" Ht	BB	60" o.c.	3	36
TON	Taxus occidentalis 'Togata'	Dark Green Arborvitae	70	5 Ht	BB	60" o.c.	3	210
TOT	Taxus occidentalis 'Techny'	Techny Arborvitae	35	5 Ht	BB	60" o.c.	3	105
Perennials								
AN	Aster novae-angliae 'Purple Dome'	Purple Dome Aster	48	1 Gal	Container	18" o.c.		
CA	Calamagrostis canadensis 'Karl Foerster'	Karl Foerster Reed Grass	44	1 Gal	Container	30" o.c.		
HR	Hemerocallis 'Rony Returns'	Rony Returns Daylily	38	1 Gal	Container	18" o.c.		
HS	Hemerocallis 'Sibla 3' Oro'	Low Yellow-Gold Daylily	42	1 Gal	Container	18" o.c.		
MS	Mecanthus tenax 'Red Flame'	Red Flame Miscanthus	67	1 Gal	Container	30" o.c.		
NW	Nepeta x 'Walker's Low'	Walker's Low Catmint	34	1 Gal	Container	24" o.c.		
PV	Panicum virgatum 'Shenandoah'	Shenandoah Switch Grass	35	1 Gal	Container	24" o.c.		
PA	Pennisetum alopecuroides 'Hansen'	Hansen Dwarf Fountain Grass	99	1 Gal	Container	24" o.c.		
SH	Sporobolus heteropus	Prarie Dropseed	126	1 Gal	Container	24" o.c.		
SM	Salvia x 'May Night'	May Night Salvia	34	1 Gal	Container	18" o.c.		
SN	Sorghastrum nutans	Indian Grass	42	1 Gal	Container	30" o.c.		
SS	Schizanthus scoparium	Lite Bluestem	88	1 Gal	Container	30" o.c.		

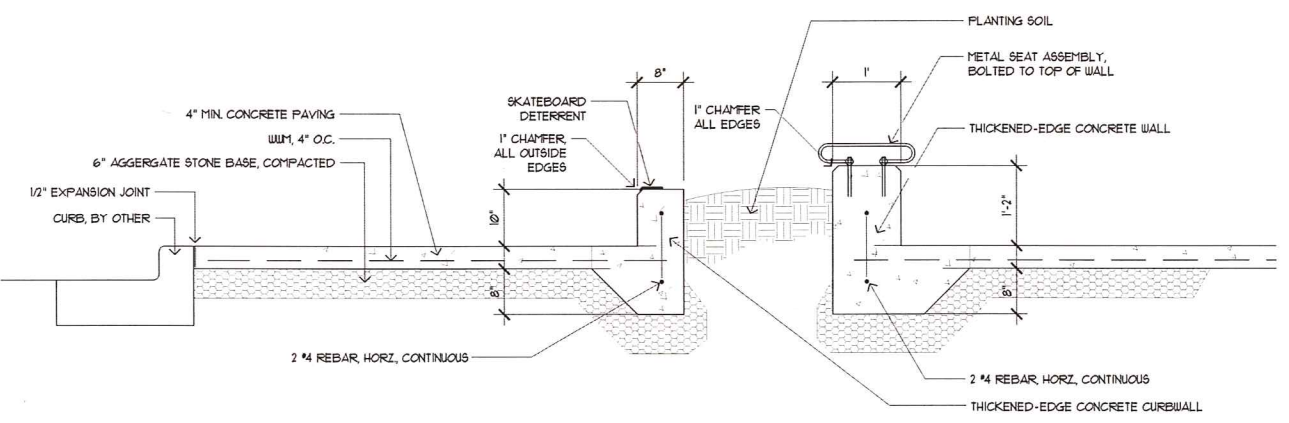




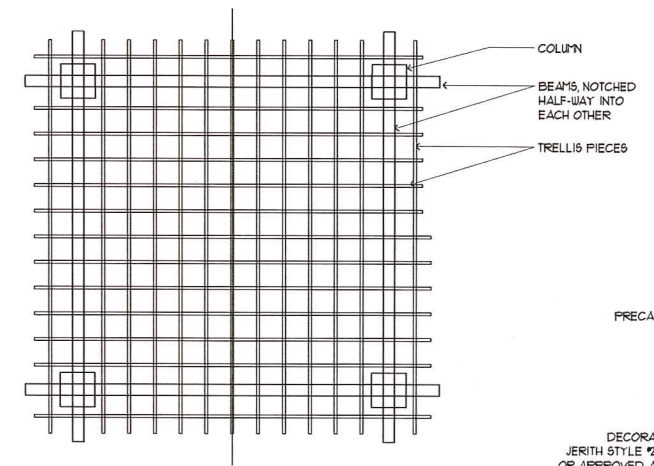
SEATING NODE
1/4" = 1'-0"



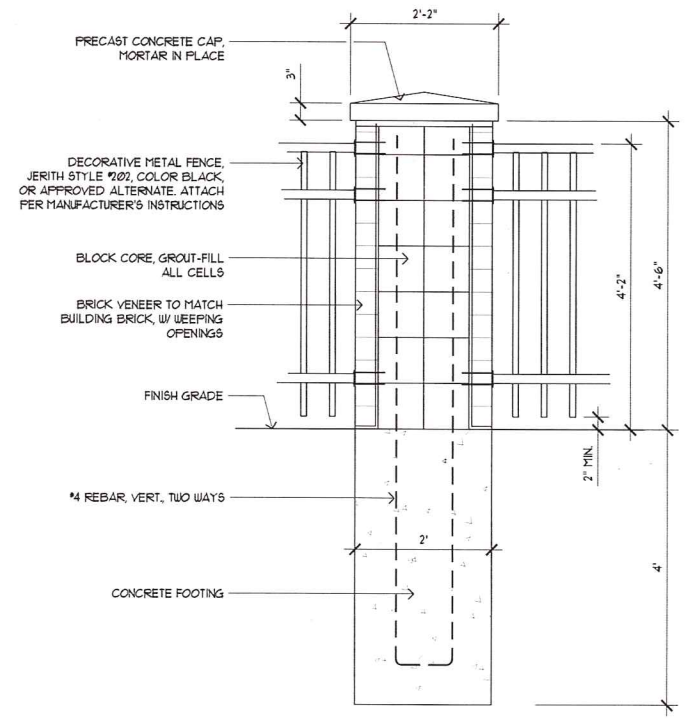
ARBOR SECTION
1/2" = 1'-0"



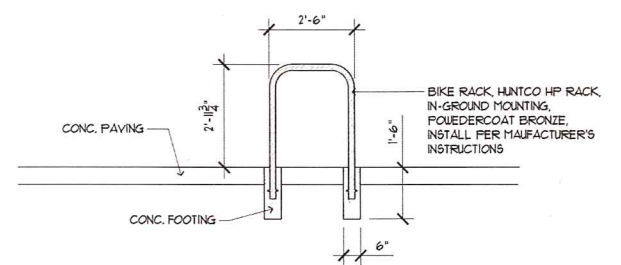
SEATING NODE SECTION
1" = 1'-0"



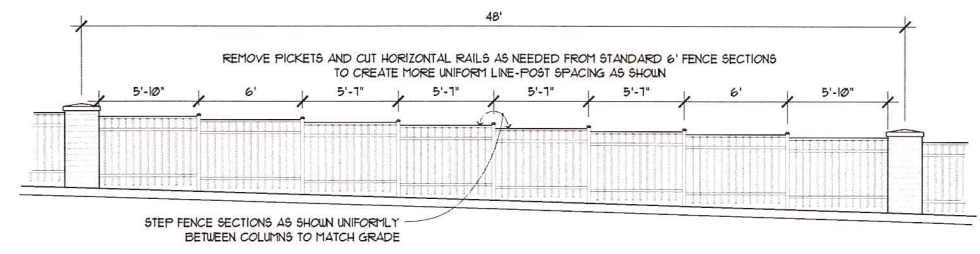
ARBOR PLAN
1/4" = 1'-0"



DECORATIVE FENCE COLUMN SECTION
1" = 1'-0"



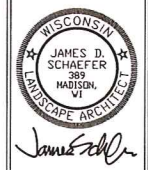
BIKE RACK
1/2" = 1'-0"



DECORATIVE FENCE ELEVATION
1/4" = 1'-0"

Schaefer
Land Design

405 N. Page Street
Stoughton, Wisconsin 53589
(608) 225-7946

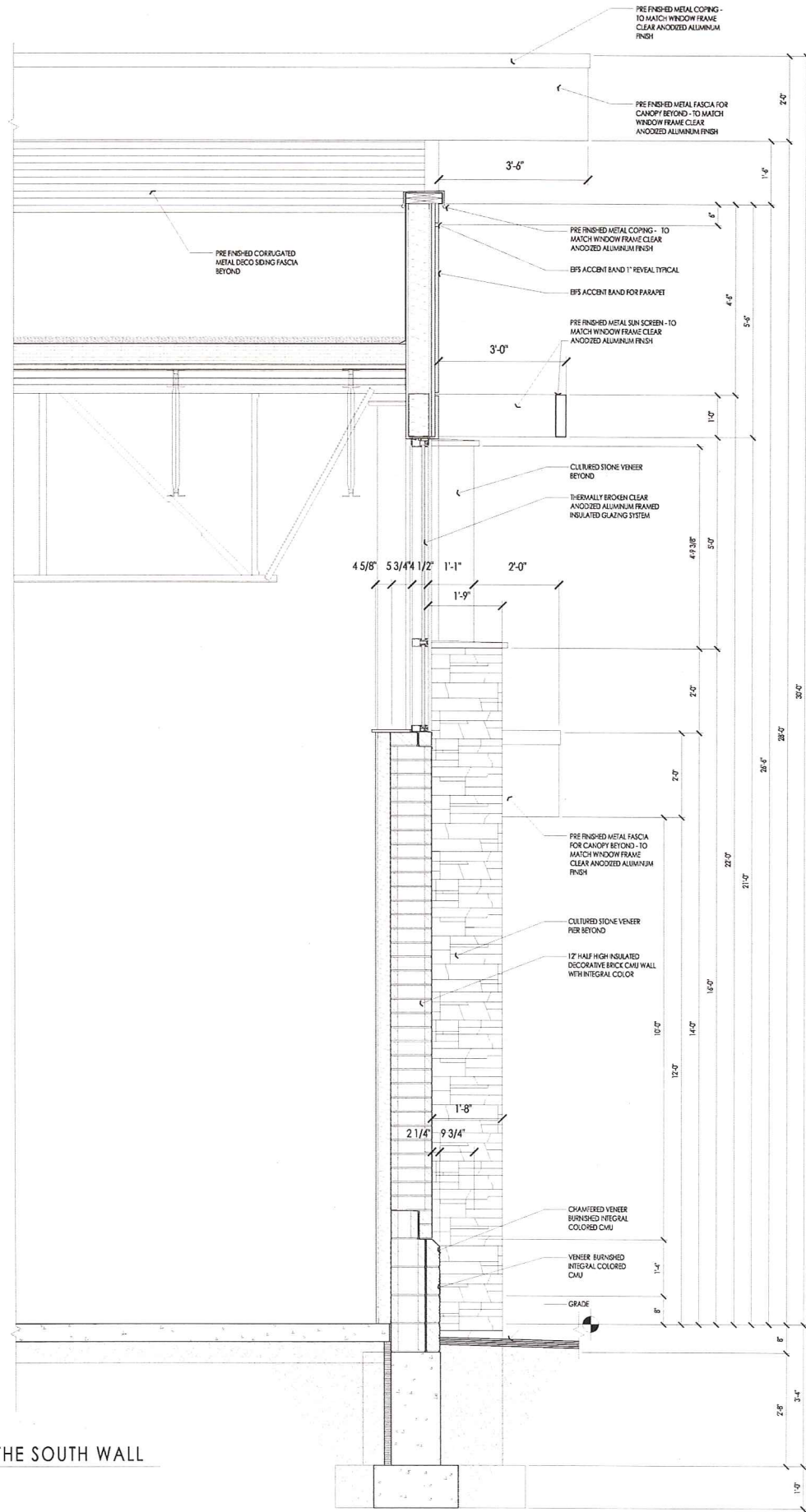


Copps Grocery Store
LANDSCAPE PLAN
GRANDVIEW COMMONS - MADISON, WISCONSIN

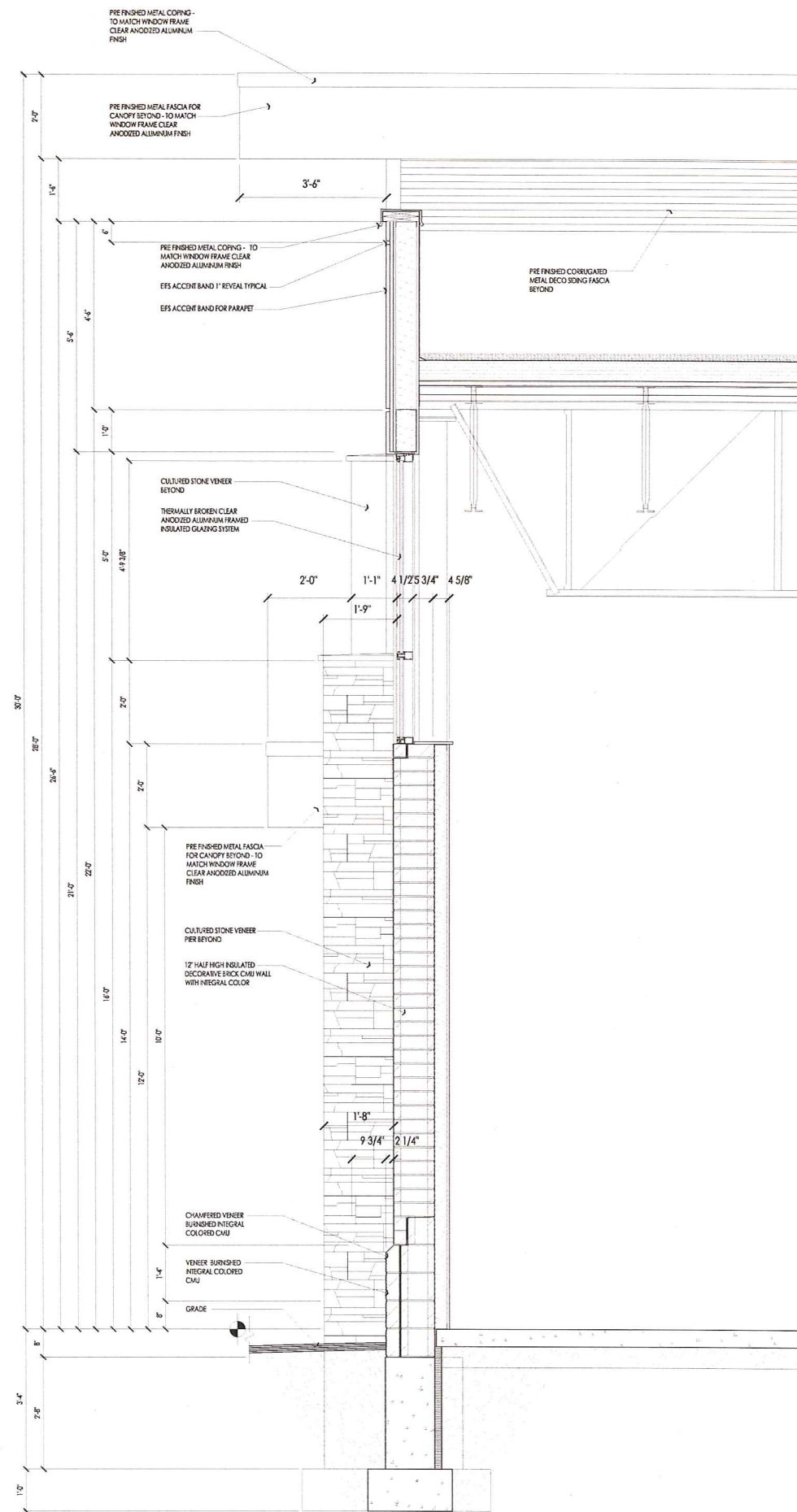
REVISIONS

SCALE: 1" = 20'-0"
DATE: 10/26/12
DRAWN BY: JDS
COPPS GROCERY

L3.0

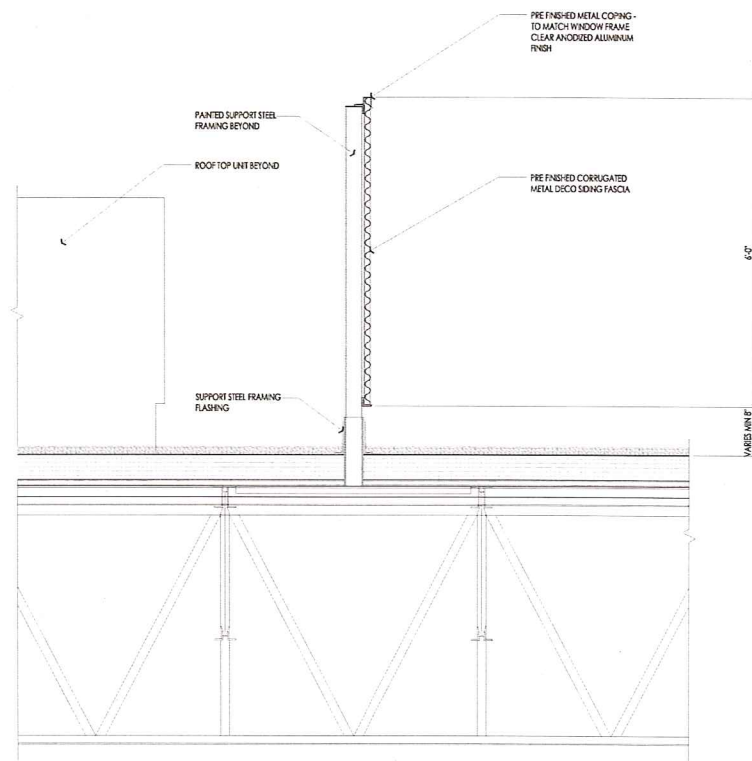


WALL SECTION THROUGH CLERESTORY AT THE SOUTH WALL
 3/4" = 1'-0"



WALL SECTION THROUGH CLERESTORY AT THE NORTH WALL
 3/4" = 1'-0"





WALL SECTION THROUGH ROOF TOP UNIT SCREEN
 3/4" = 1'-0"

Grandview Commons
 Town Center/Doric Lodge
 Revised General Development Plan

1	Oak	Preserve
2	Oak	Preserve pending Library Design
3	Oak	Remove due to grading impacts
4	Hickory	Remove due to grading impacts
5	Hickory	Remove due to street extension
6	Oak	Preserve
7	Maple	Remove due to existing condition
8	Oak	Preserve
9	Maple	Preserve
10	Spruce	Preserve
11	Maple, Hackberry, Spruce	Remove due to grading
12	Woodlot Preservation Area	

Remaining trees to be removed

