

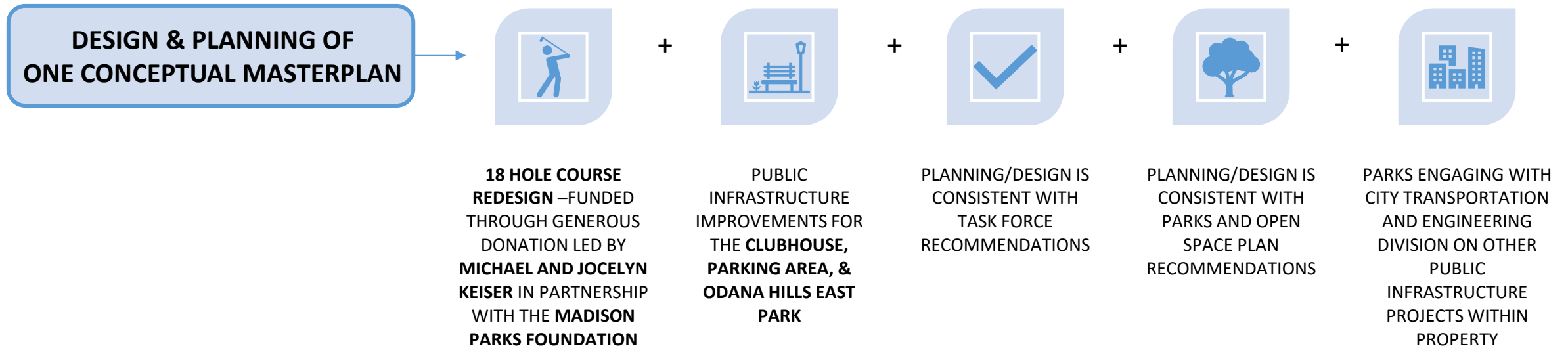
MADISON PARKS

Odana Hills Golf Course & Park Draft Conceptual Master Plan



Presented to Board of Park Commissioners

Our Vision: Odana Hills Golf Park – A Community Gathering Space



Overarching Design Considerations

- Inclusive design
- Improved safety and flow of people, cars & bikes
- Efficient use of the space
- Expanded uses
- Improved environmental outcomes
- Increased connection to the spaces

Current Odana Hills Golf Course & Park Site



Proposed Interagency Collaboration - Engineering



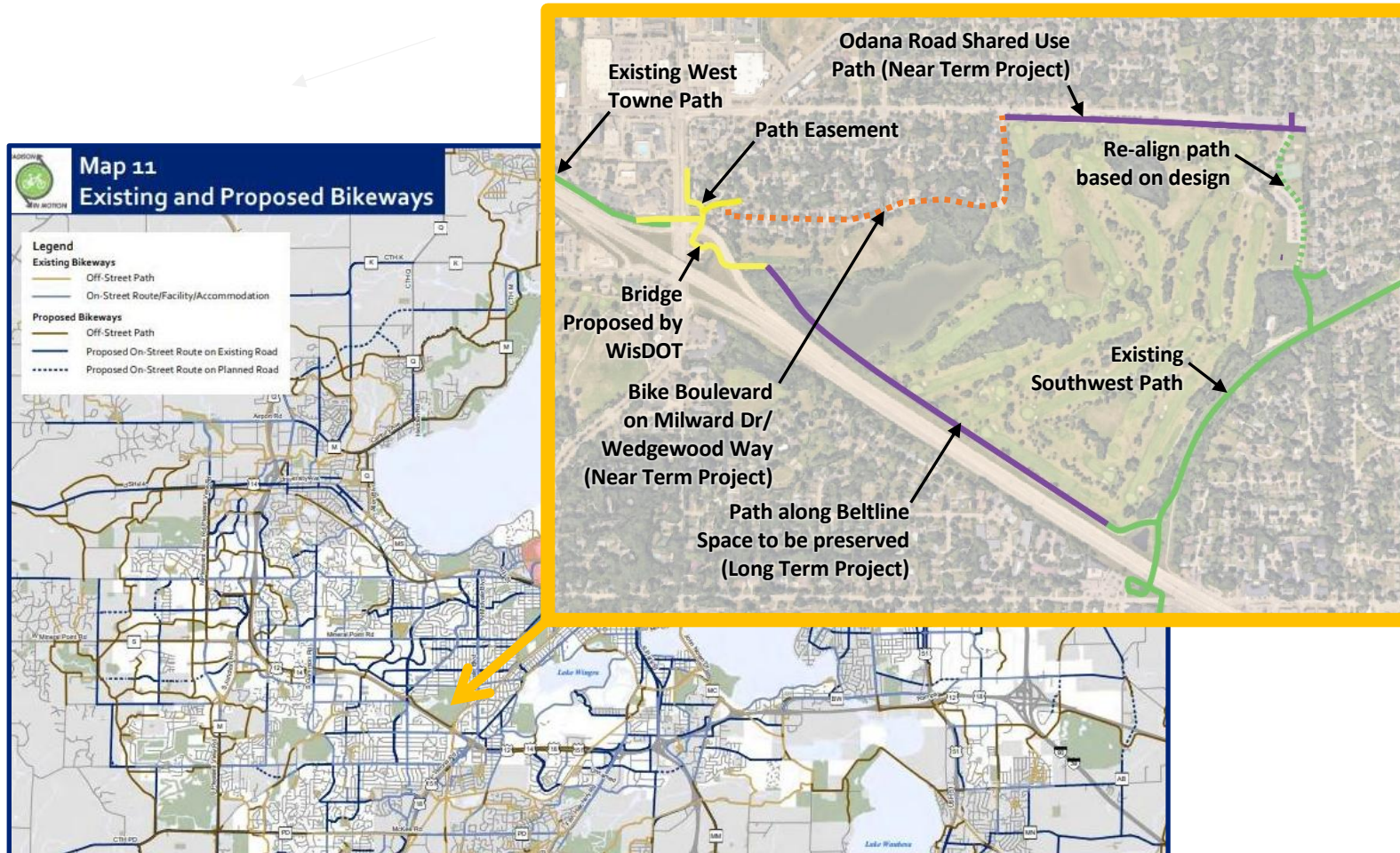
Stormwater – Flood Mitigation Improvements

- Relieve pressure during storms to reduce flooding for surrounding neighborhood
- Will help with course drainage issues

Sanitary Sewer Maintenance Access

- Improved access for maintenance

Potential Interagency Collaboration - Transportation



Madison In Motion: Transportation Improvements

- Secure safe east/west connection to Southwest Commuter Path
- Enhanced experience for commuters and park users
- On- Street Connection needs to be refined

Public Engagement

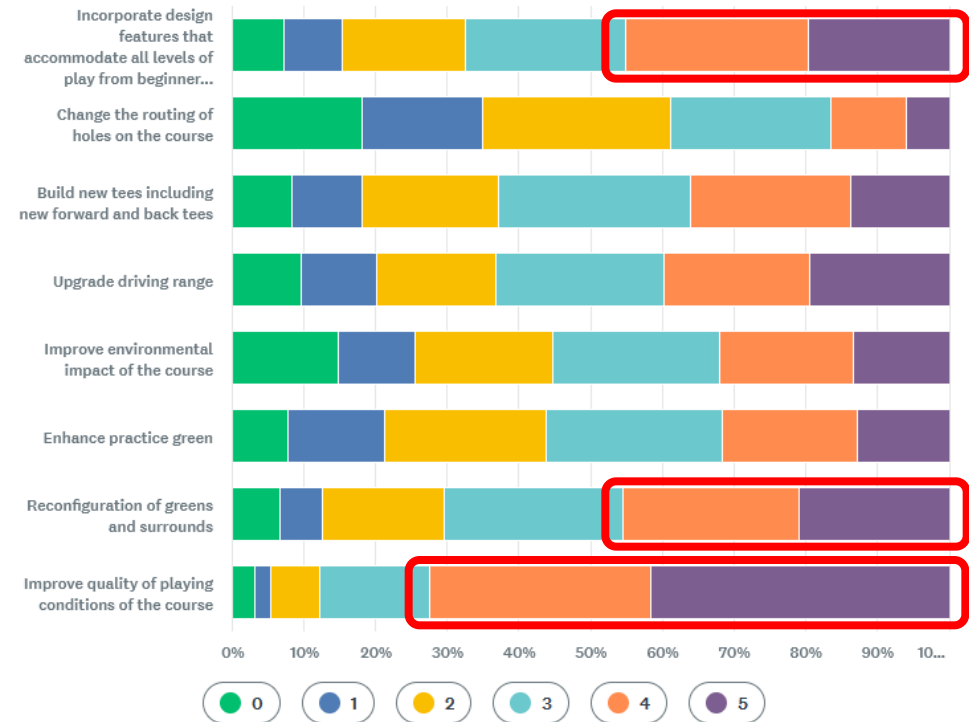
- Focus Groups
 - Golfers, Youth Golfers, Non-Golfers, Natural areas volunteers
- Community-wide survey March-April- about 1300 responses
- Public Info Meeting- presentation of concepts- about 190 attendees
 - About 424 website views of the presentation
- Open Houses- May 6 & 7 – about 100 attendees
- Community Survey of the Design Concepts
 - 224 Survey responses
- Ongoing meetings with Neighborhood Associations & Stakeholder groups

Survey Results – Course Improvements

Please help us plan for improvements at Odana Hills Golf Course by rating these priorities (0- Not important, 1- Somewhat not important, 2- Neutral, 3 - Somewhat important, 4- Important 5- Very important)

- Top 3 priorities for golf uses:
1. Improve playing conditions
 2. Reconfigure Greens & Surrounds
 3. Design to accommodate all skill levels

- Top 5 reasons people would visit Odana beyond golf:
1. Cross country skiing
 2. Hiking
 3. Nature viewing
 4. Attending events
 5. Biking



Survey Results – Clubhouse Uses

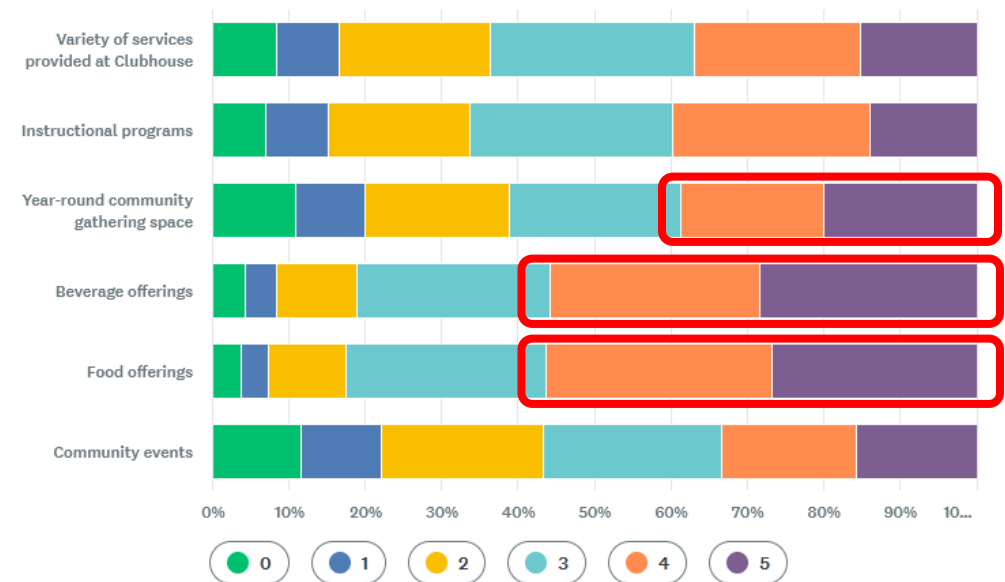
Top priorities for clubhouse improvements:

1. Improved food & beverage offerings
2. Year-round community gathering space

Many in the neighborhood and passing through do not know they can use the current clubhouse.

New Clubhouse space & expanded programming = increased use far beyond golf.

Please rate improvements you would like to see at the future Clubhouse (0- Not important, 1- Somewhat not important, 2- Neutral, 3 - Somewhat important, 4- Important 5- Very important)

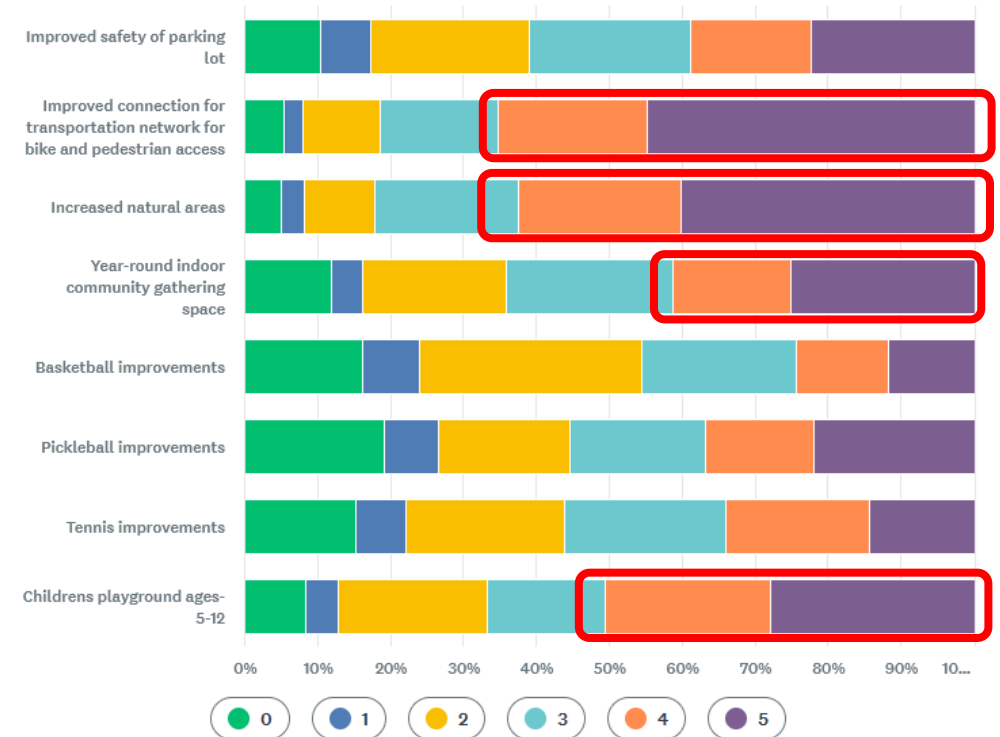


Survey Results – Park Improvements

Please rate the following park improvements to improve the Odana Hills East Park experience (0- Not important, 1- Somewhat not important, 2- Neutral, 3 - Somewhat important, 4- Important 5- Very important)

Top priorities for park improvements:

1. Improved bike/ped connections
2. Increased natural areas
3. Playground improvements
4. Year-round community gathering space





Conceptual Golf Master Plan

Conceptual Golf Master Plan



EXISTING GOLF COURSE



CURRENT PROPOSED CONCEPT

Park Site Design Concept A

Design largely maintains status quo design.

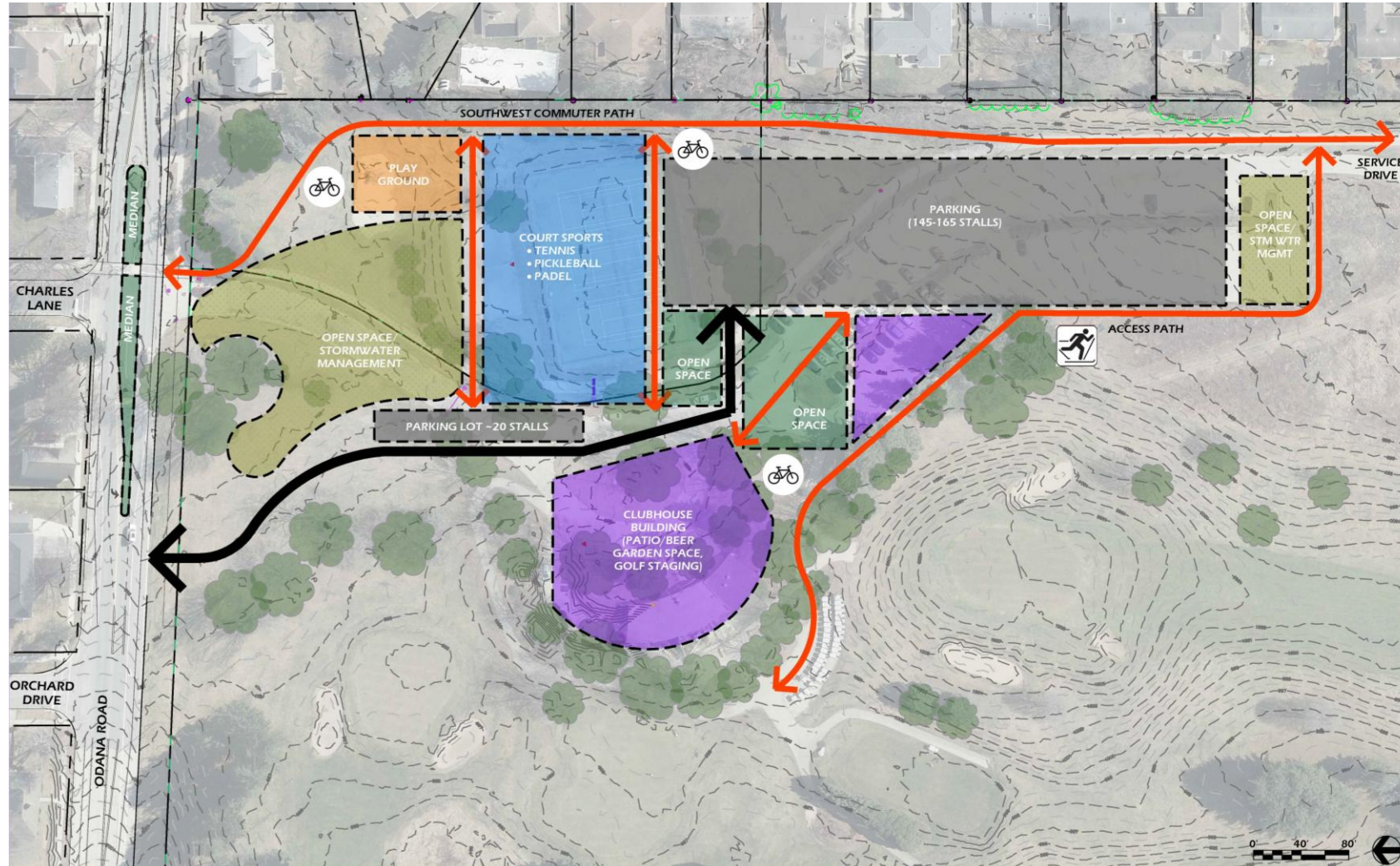
Design received a fair amount of support from respondents.



Park Site Design Concept B

Design has not ranked high among feedback received.

Is not being considered further.



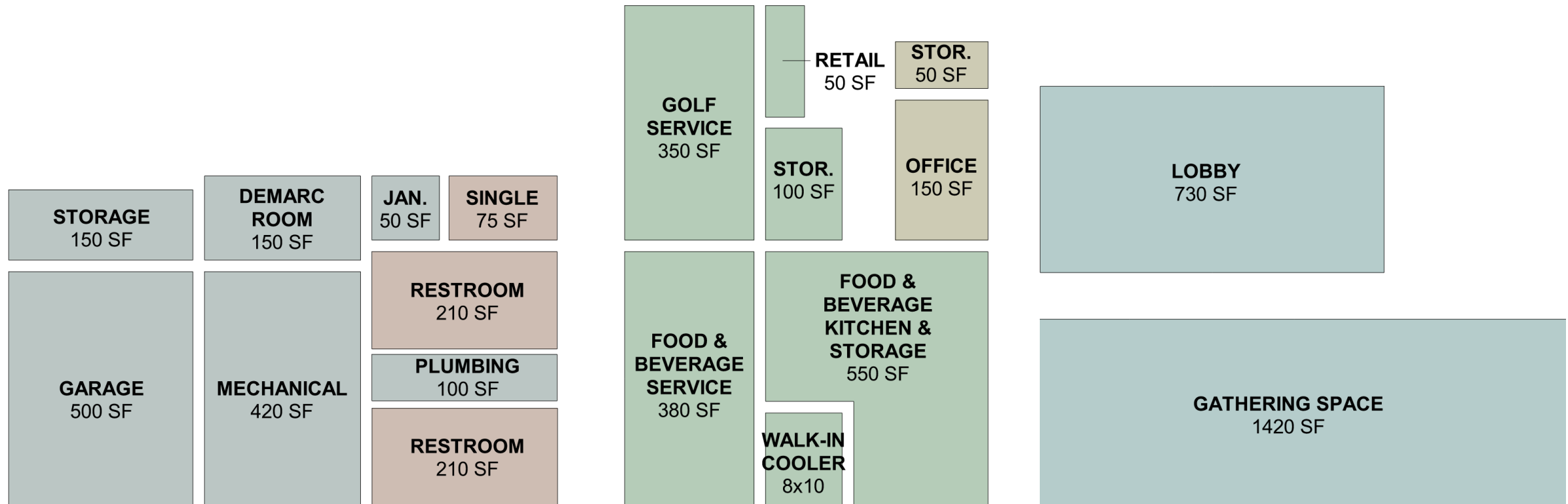
Park Site Design Concept C

Favored Design among respondents.

Staff is working with consultant team to refine.

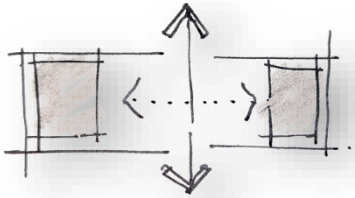


Clubhouse Architectural Graphic Program



- Current clubhouse: funded through Golf resources to meet golf business needs
- Contemplating partnership with food service partner

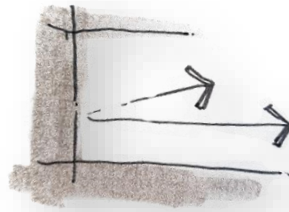
Clubhouse Architectural Planning Objectives



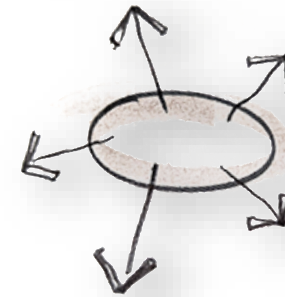
INTUITIVE
DESIGN
CONCEPT



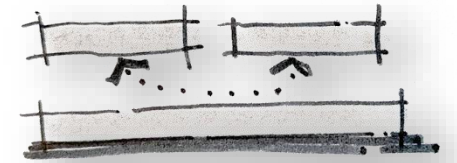
EXPANSIVE
SIGHTLINES



VIEWS OF PARK
AND COURSE



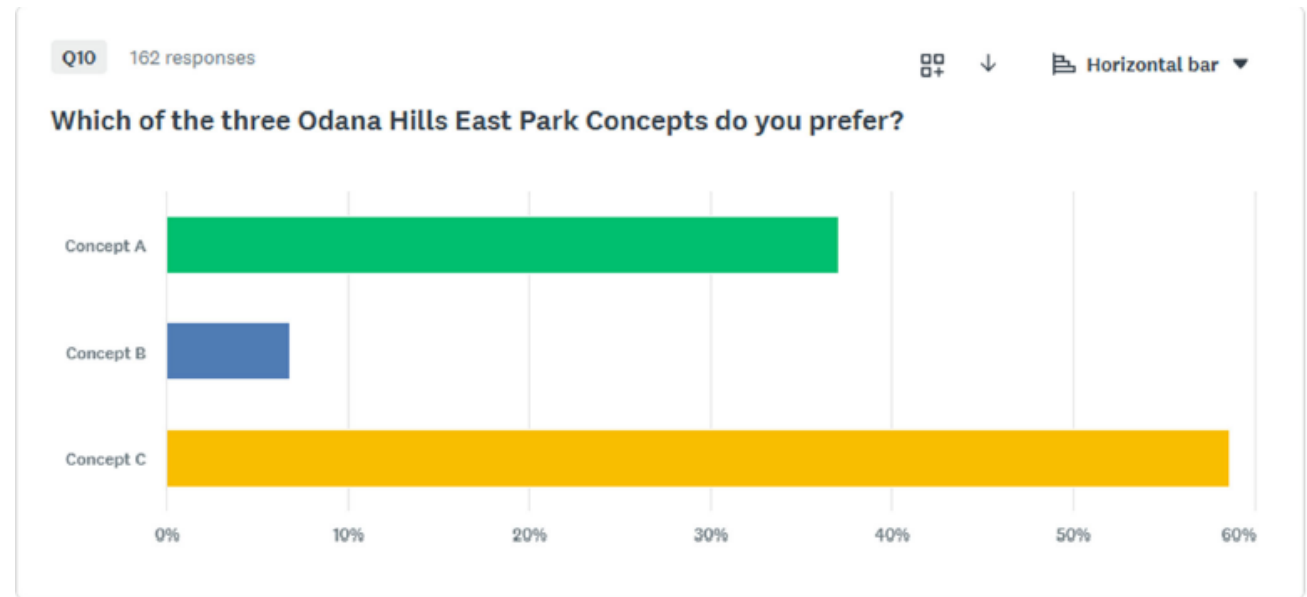
CONNECTION
ACROSS ALL USERS



SERVICE
EFFICIENCY

Survey Responses to Design Concepts

- Significant support for Course Redesign
- Suggestions for modifications:
 - Protect and expand existing pollinator area, thoughtfully increase native plantings around course
 - Design course to ensure safety, including positioning of tee boxes, appropriate screening by trees or nets and being thoughtful about shared fairways
 - Consider additional ways to get people on course who are not golfing
- Clubhouse- strong desire for expanded uses, including food & beverage, community gathering.
- Concept C preferred for park design
 - Support for sport courts, interest in preserving tennis and adding some dedicated pickleball
 - Set playground further off parking lot
 - Driveway realignment will require some changes on Odana
- Strong support for bike improvements
- Strong desire to improve cross country skiing course



Preferred Park Concept



Items In Progress

- Refinement of course concept
 - Overlay existing routing with concept
 - Address some graphic items
 - Calculation of natural areas
- Tree inventory & survey, including overall impact to trees
- Refine bike path improvements and determine engagement process
- Define engagement process for driveway alignment, to correspond with Park Improvements

Targeted Approval Timeline

- Conceptual Master Plan
 - Review of Draft by BPC May 13
 - Review of Final by BPC June 10

- Donor & Development Agreement
 - Introduce Resolution– June 9
 - Board of Park Commissioners- June 10
 - Finance Committee – June 15
 - Common Council – June 23

