



TOP OF STATE STREET – PHILOSOPHERS' GROVE PUBLIC MEETING

March 16, 2015

Agenda

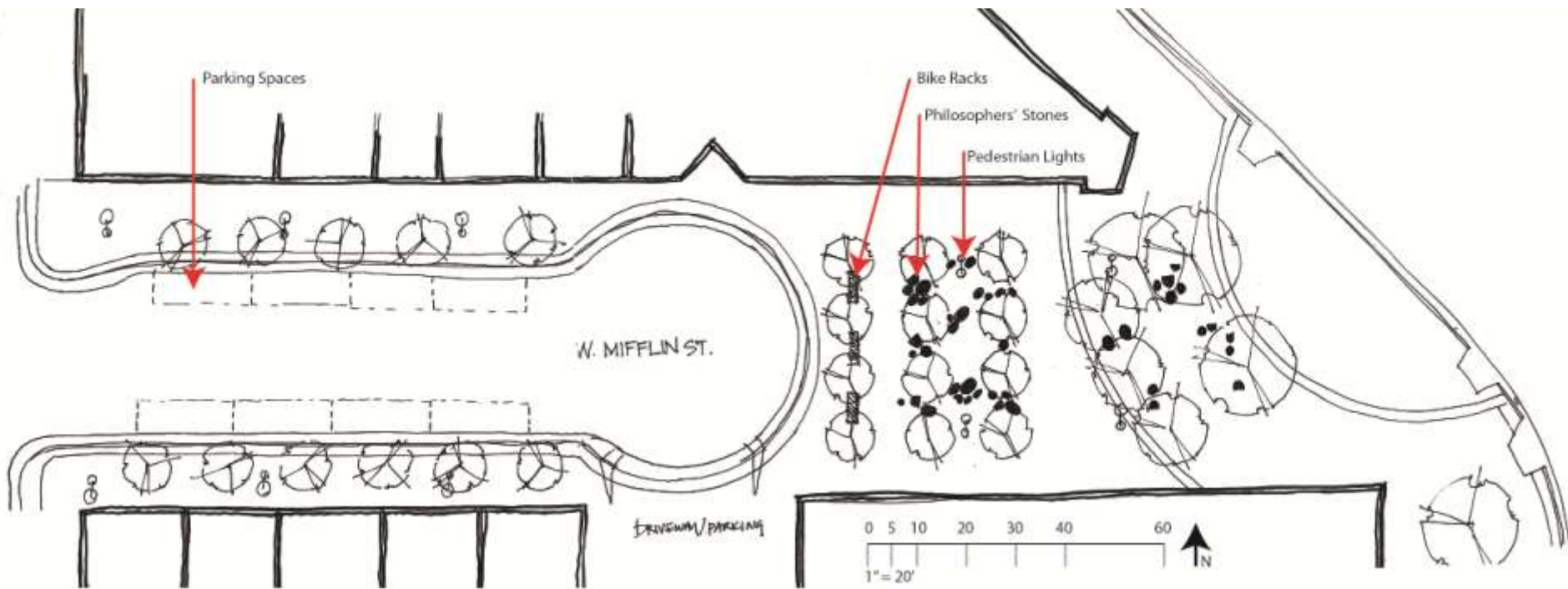
- **Welcome and Introductions**
- **Presentation**
 - **Background**
 - **Emerging Design Preferences**
- **Input on Design Preferences**
- **Adjourn**

Philosophers' Grove

Location



Site Plan



Philosophers' Stones *Commissioned 2004*



Since people watching is the most freely enjoyed, shared activity (*along State Street*), "Philosophers' Stones" is conceived as providing low key cues for individuals to behave in interesting, unexpected ways.

"The rocky woods of the Wisconsin Dells inspired the relationships I envisioned between the sculptural elements and the trees to create an urban landscape for the imagination."



Why are we here?

Newspaper Headlines...

Food, Art Could be Part of Revitalizing 100
Block of West Mifflin Street

[WI State Journal September 2, 2013]

Mayor Blames State for Crime Surge Near
State Street

[NBC15.com September 3, 2013]

Time to Clean Up Upper State Street

[WI State Journal September 5, 2013]

Pianos Bring Music to Troubled Areas of State
Street

[Capital Times September 18, 2013]

Newspaper Headlines...

Pull the artsy stones from top of State Street

[WI State Journal October 1, 2014]

City moves to address crime problems on upper State Street

[State Journal September 3, 2014]

Proposed changes on Upper State Street could reduce crime

[Badger Herald September 2, 2014]

City mulls design changes to address crime problems on upper State Street

[State Journal September 29, 2014]

Community Concerns

▣ Design Issues:

- Limited flow through space, lacks connectivity
- Feels dark
- Lack of use by general public

▣ Quality of Life Issues:

- Intimidation / Crime
- Not welcoming

What we Tried in 2014

- ❑ Increased Police presence
- ❑ Chalkboard experiment
- ❑ Twinkle lights on trees
- ❑ Easier permitting process to use space
- ❑ Sidewalk cleaning program
- ❑ Increased Programming



Goal

How can we make the
top of State Street
great place for
everyone?

Process

Design Workshop – November

- ▣ Design over the years
- ▣ Concerns about space now
- ▣ Ideas for physical changes
 - ▣ Open up space visually
 - ▣ Create a pass through
- ▣ Ideas for activating

Approaches – December-January

- ▣ 5 design approaches

1. No change

2. Redesign portion closest to State Street

3. Pass through towards the History Museum

4. Pass through in center

5. Totally reconstruct the space

- ▣ DCC preferred 3+4

Design Concepts – February-March

- ▣ Design concepts for 2 alternatives
 - ▣ Pros + cons + issues
 - ▣ Cost estimates
- ▣ DCC identified preferred concept
- ▣ Input on that tonight

Finalize Concept – March-Early Summer

- ▣ DCC concept approval
- ▣ Finalize design details
- ▣ Construction plans
- ▣ City approval process
- ▣ Construction
- ▣ Activation plan

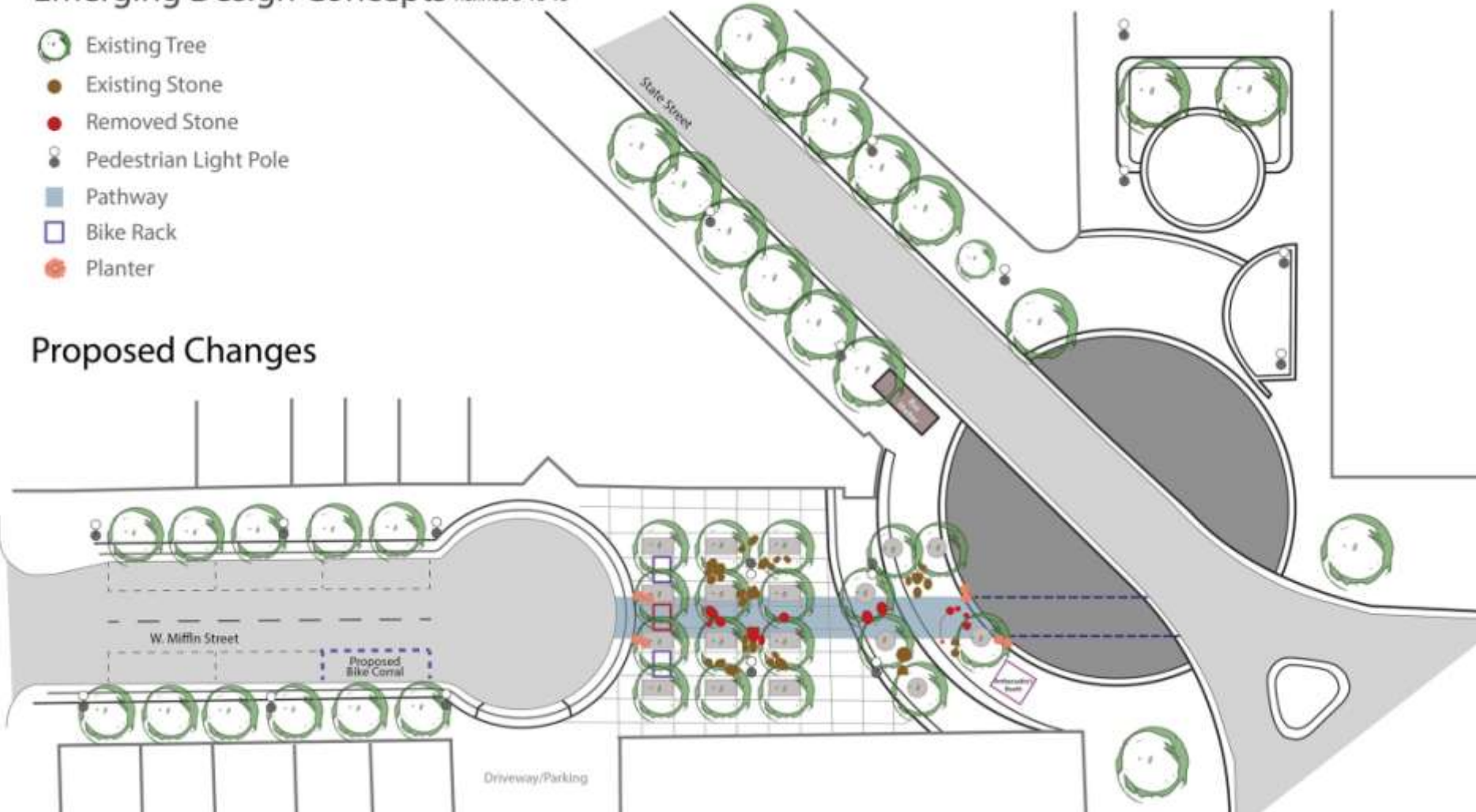
Emerging Design Preference

Emerging Design Preference

Draft Emerging Design Concepts Refined 3-16-15

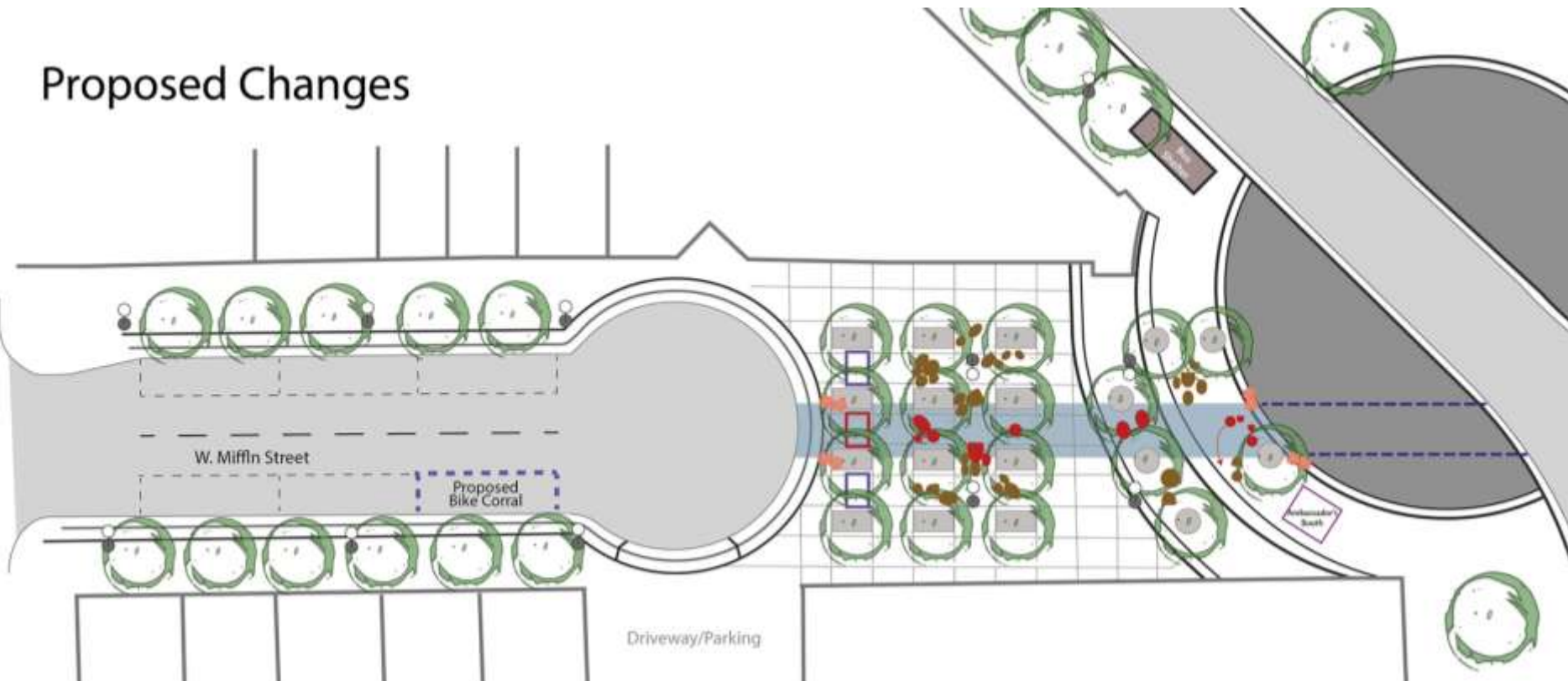
- Existing Tree
- Existing Stone
- Removed Stone
- Pedestrian Light Pole
- Pathway
- Bike Rack
- Planter

Proposed Changes



Emerging Design Preference

Proposed Changes



View From State Street

Existing Condition



Proposed Removals



Proposed Condition



Proposed Condition



Proposed Condition



Existing Condition



Proposed Removals

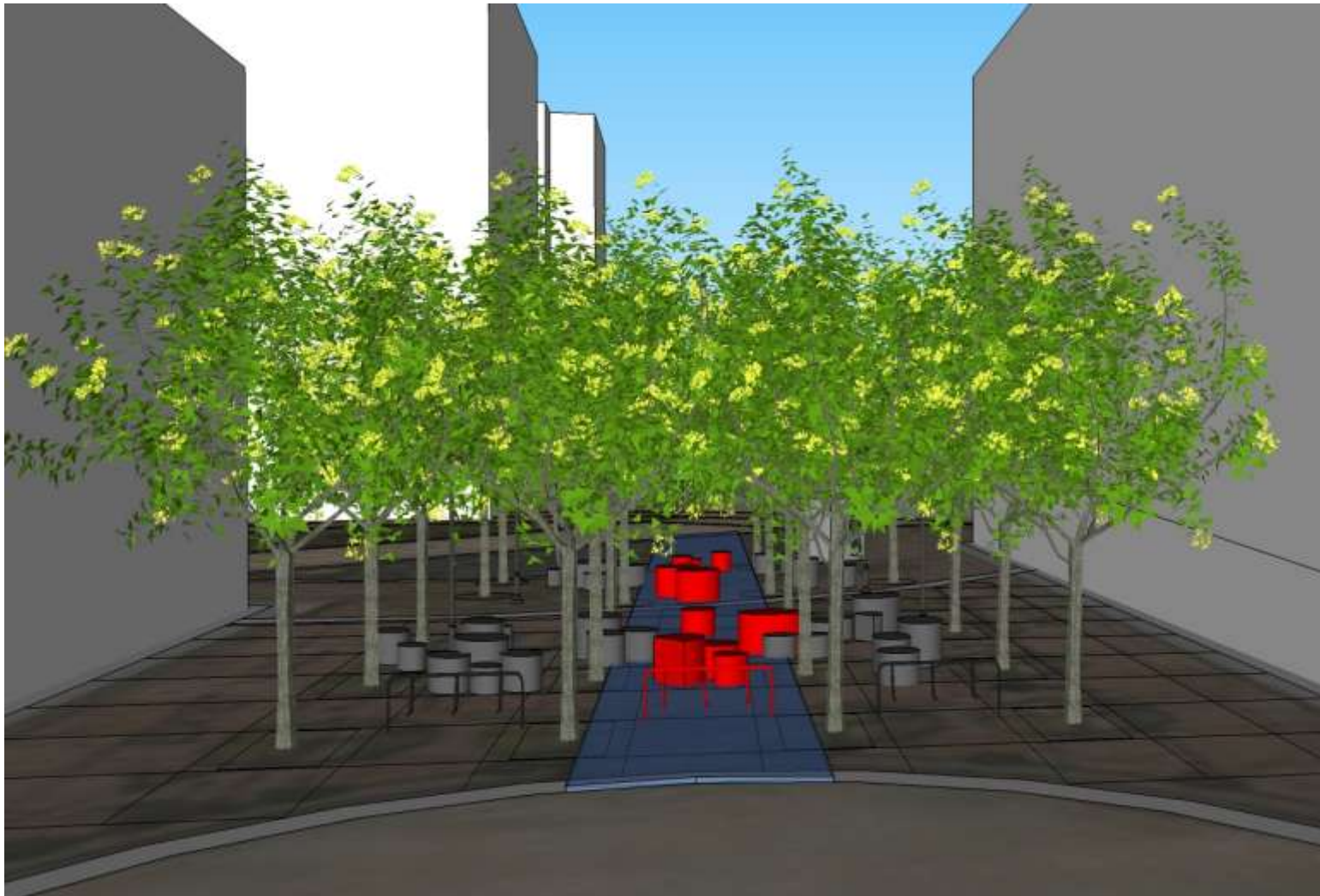


View Toward State Street

Existing Condition



Proposed Removals



Proposed Condition



Proposed Condition



Proposed Condition



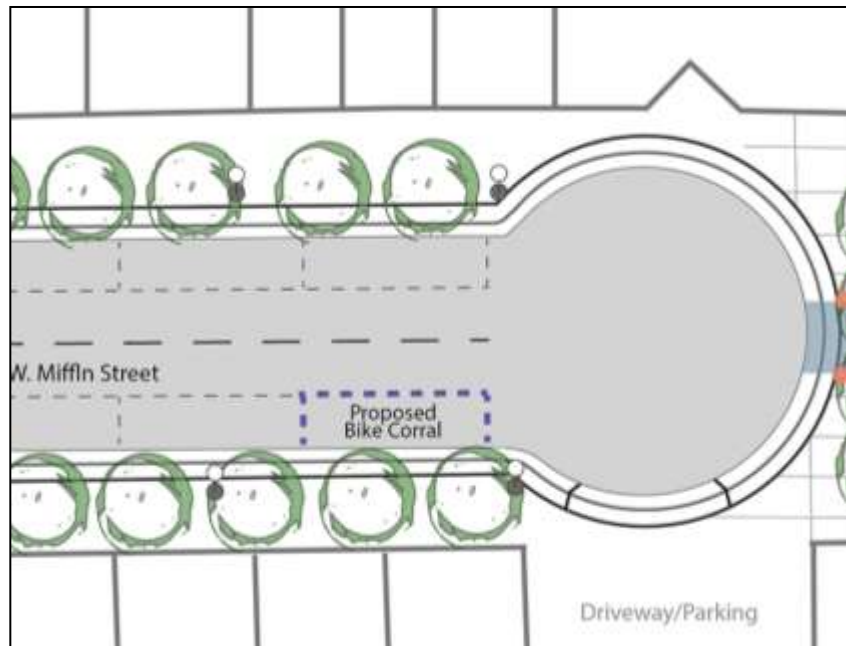
Existing Condition



Proposed Removals



Bike Corral



Let Us Know What You Think

- ▣ Big sheet on the wall
 - ▣ GREEN sheets for things you like
 - ▣ GOLD sheets for things you think need work or should be changed
 - ▣ BLUE sheets for neutral comments – additional information + questions
- ▣ Also have a sheet for additional ideas on activating the space

Thank You!

For more information:

Bill Fruhling 267-8736

bfruhling@cityofmadison.com

or

Rebecca Cnare 266-4957

rcnare@cityofmadison.com

30 on the Square

Before 2004 Reconstruction



1970's Mall Concourse Plan

1992 Art Installation

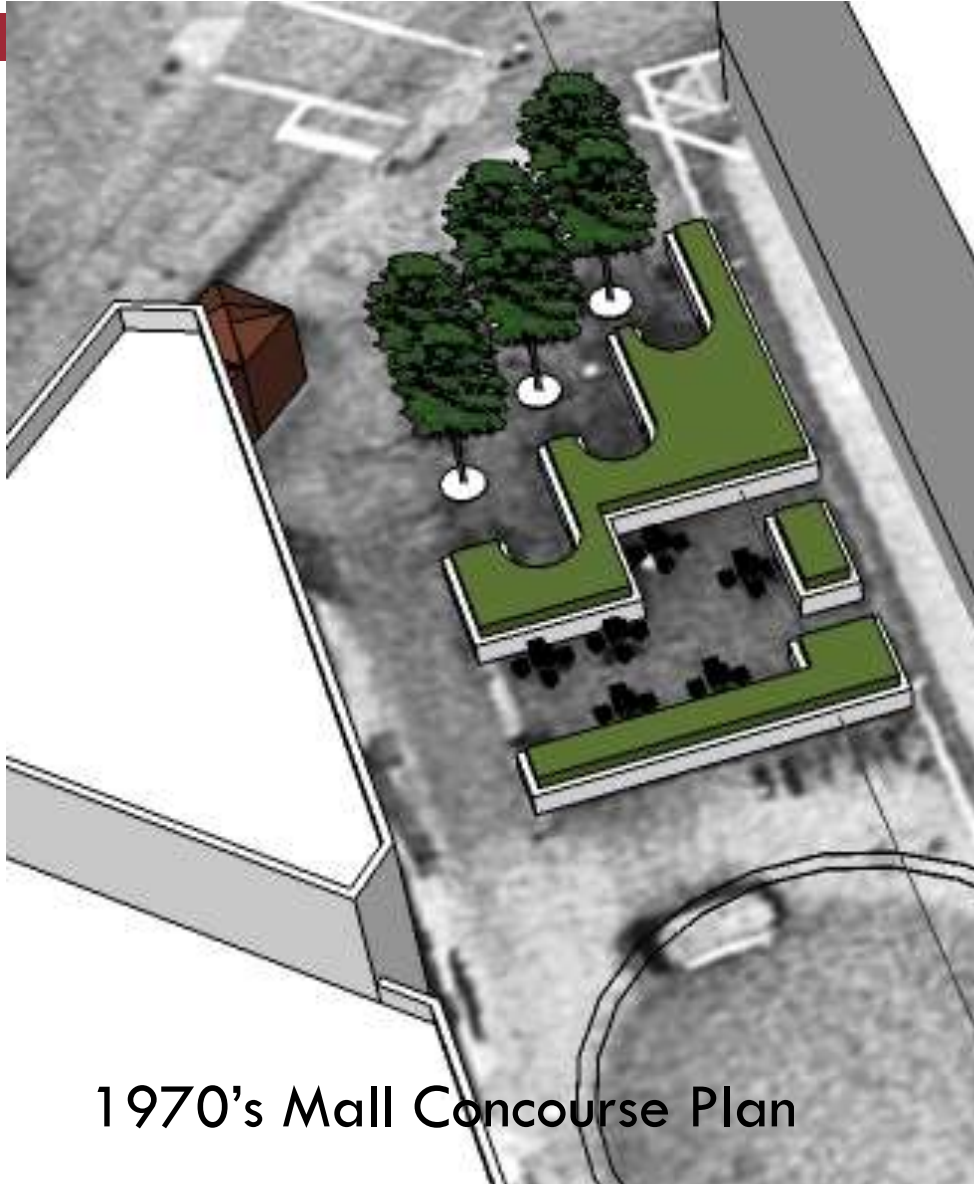
30 on the Square

After 2004 Reconstruction



Philosophers' Grove

Before 2004 Reconstruction



1970's Mall Concourse Plan



Philosophers' Grove

After 2004 Reconstruction



Commerce on West Mifflin: Arcade

1930



1956



Today



Ideas and Concepts

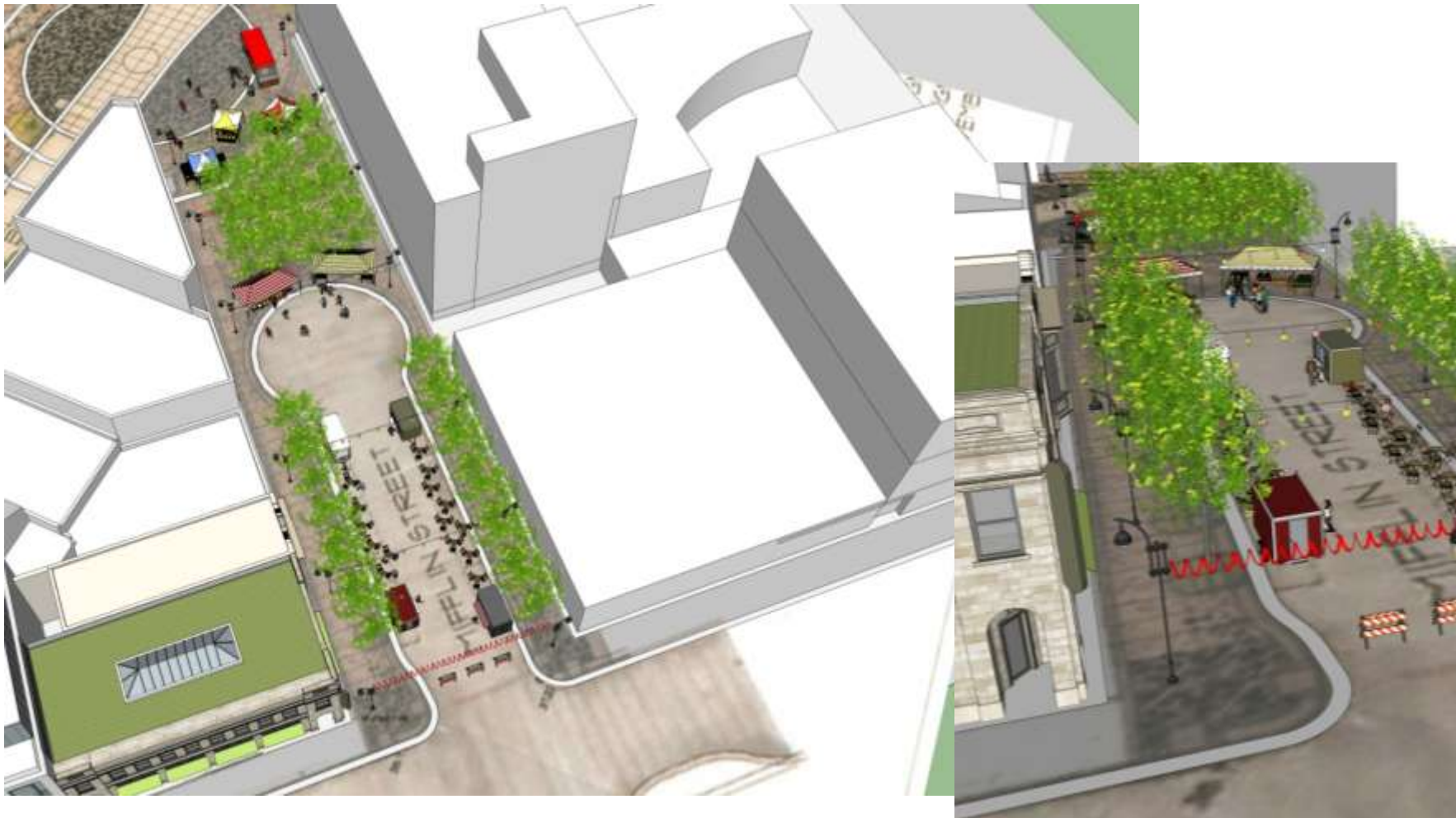
What have we tried so far?



Ideas and Concepts

Design and Programming

Programming Ideas?



Food Carts? Mobile Chairs? Parklets?



Night Market? Bookfair?



Projection Art? Concert? Movie Night?



Yoga? Dancing? Learning?



Temporary Art? Chalk Art festival?



Lights? Banners? Flags?



Pop-up Retail? Painted vacant storefronts?



Workshop #1: Design Elements

- ❑ How does this area fit into the larger context? What should it connect?
- ❑ What do you think about the existing design elements?
 - Trees, Philosophers Stones, Stage, Bike Racks, Ambassador Booth, etc
- ❑ What are your ideas for the space?

Workshop #2: Programming

- ▣ What types of activities could be successful?
 - ▣ i.e. Food Carts, movable chairs, events, temporary art, markets?
- ▣ What partnerships could we explore?
- ▣ Where could negative behavior move to?
- ▣ Are there short term and long term opportunities?