

**From:** [Alexander Harding](#)  
**To:** [Transportation Commission](#); [Canton, Aaron](#)  
**Subject:** #5 Hammersley Road traversable curb at intersection  
**Date:** Tuesday, March 8, 2022 9:22:56 AM

Caution: This email was sent from an external source. Avoid unknown links and attachments.

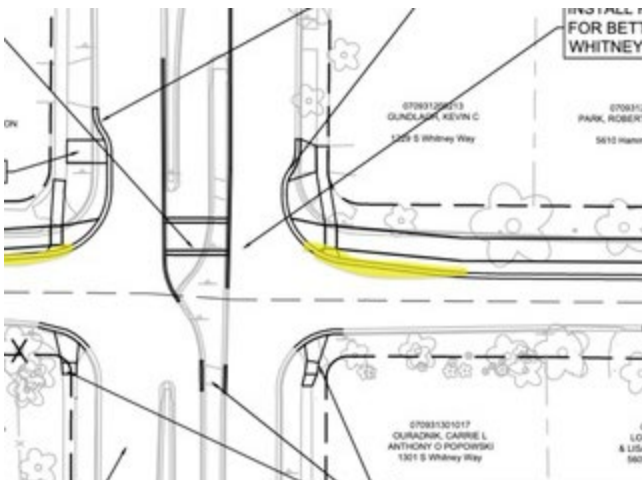
Hello,

I am concerned about the curb “bending out” at the intersection (see highlighted image). This will negate the benefits of an offset path crossing, as cars will follow the curb line and the point of conflict with the bike path will still be a shallow angle.

For safety, the curb should **not** “bend out”. Cars should be encouraged to turn across the path at a good angle (closer to perpendicular to the path) for visibility of path users out of the windshield.

If the purpose of the “bend out” curb is to accommodate trucks, please consider a truck apron or mountable curb/terrace/traversable curb (like the Ohio Ave project) instead.

Please see the following corner design options to accommodate trucks safely, if that is the intent: [https://altago.com/wp-content/uploads/Corner-Design-for-All-Users\\_Alta\\_Sept-2020.pdf](https://altago.com/wp-content/uploads/Corner-Design-for-All-Users_Alta_Sept-2020.pdf)



Thank you for your excellent work and accommodating feedback to build a great project!

Alexander Harding

Wyota Ave