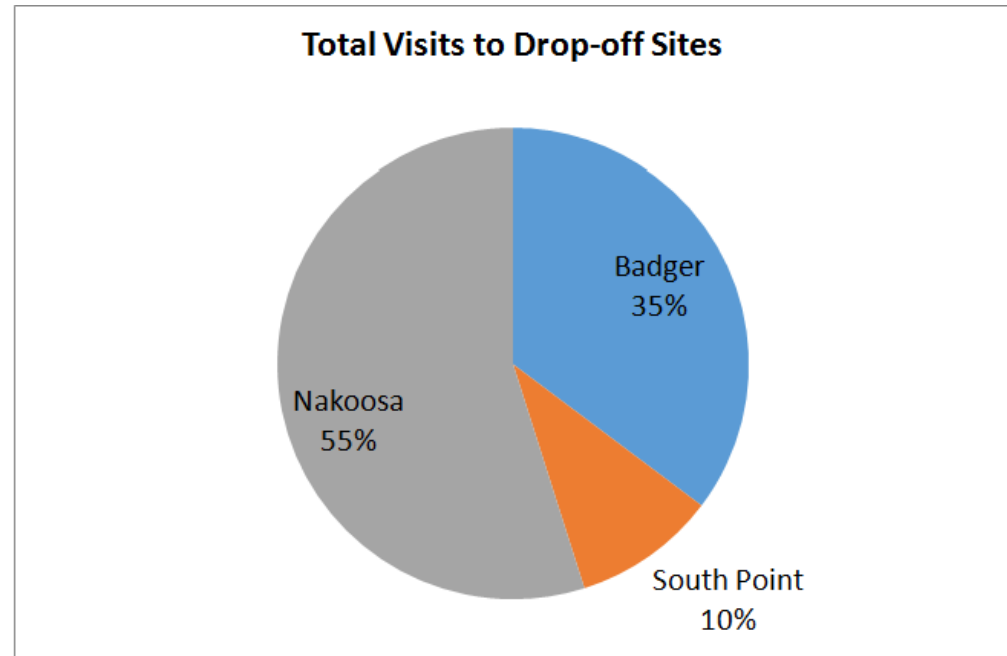


Visits to Drop-off sites from June 6 to September 5. (90 work days)

Numbers restricted to visits between 8am and 8pm

	Total	Daily Average
Badger	33,651	374
South Point	9,415	105
Nakoosa	52,438	583
TOTAL	95,504	1,061



Badger Detail (6/6/17 to 09/05/17)				
	Weekday	Weekend		
Totals	23,010	10,640		
Daily Average	360	409		
<b>Comparisons</b>				
	MWF	Tu/Thurs	Sat/Sun	
Totals	13,020	9,990	10,640	
Daily Average	343	384	409	
Hourly Average	40	32	48	
<b>Tuesday/Thursday</b>				
	8:00am to 4:30	4:30 to 8:00pm		
Total Visits	8,435	1,555		
Daily Average	324	60		
Hourly Average	38	17		
Median Total	366			
<b>Daily Comparisons</b>				
	Totals	Days in Sample	Daily Average	Hourly Average
Monday	4,682	12	390	46
Tuesday	5,295	13	407	34
Wednesday	4,058	13	312	37
Thursday	4,696	13	361	30
Friday	4,280	13	329	39
Saturday	5,968	13	459	54
Sunday	4,672	13	359	42
Total	33,651		374	40
				%
				14
				16
				12
				14
				13
				18
				14
<b>Top Five Days</b>				
	Total	Date	Day	Hourly Avg.
	573	09/05/17	Tuesday	67
	559	07/15/17	Saturday	66
	556	07/01/17	Saturday	65
	530	06/24/17	Saturday	62
	503	07/29/17	Saturday	42
<b>Bottom Five Days</b>				
	Total	Date	Day	Hourly Avg.
	266	06/28/17	Wednesday	31
	259	06/14/17	Wednesday	30
	254	08/04/17	Friday	30
	250	08/23/17	Wednesday	29
	198	07/12/17	Wednesday	23

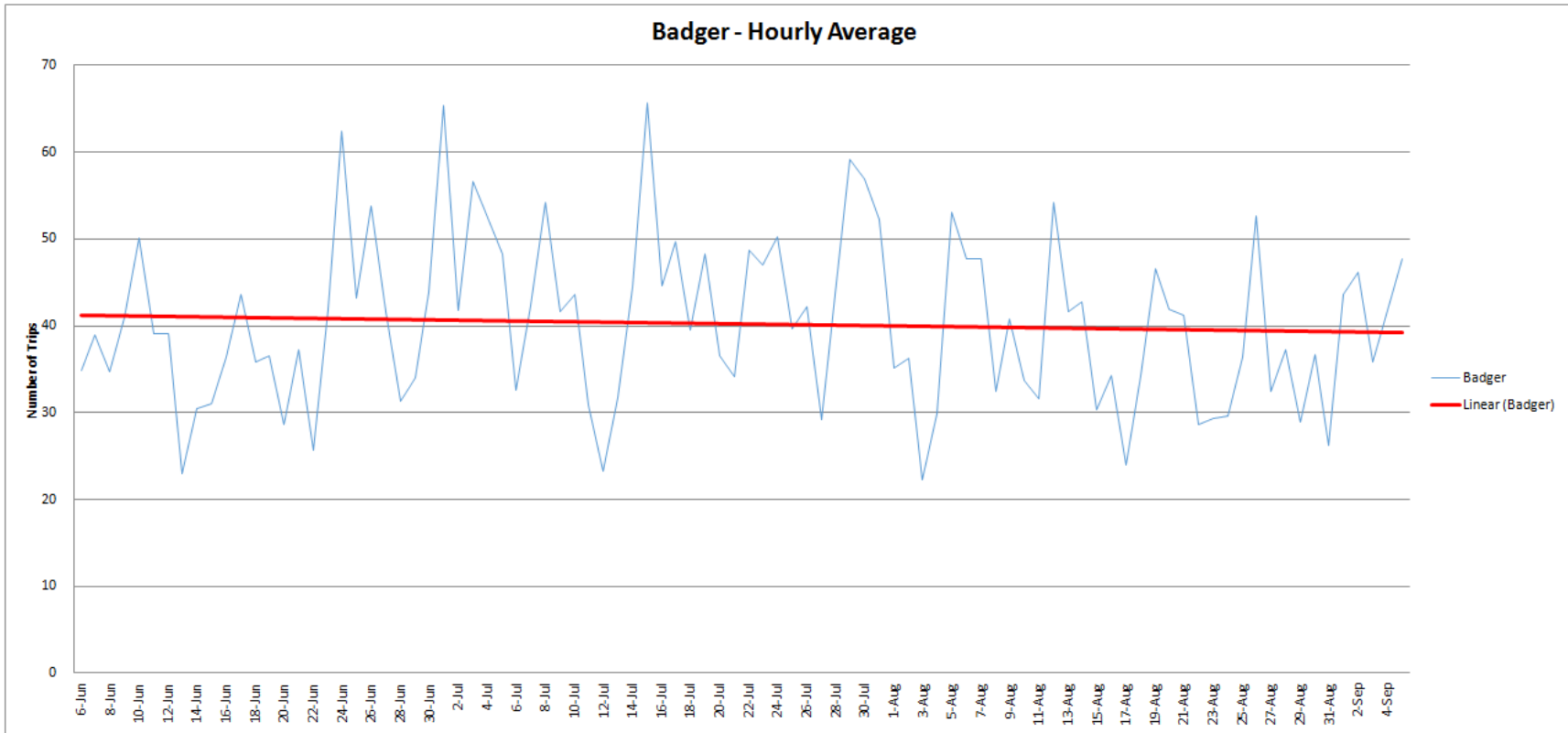


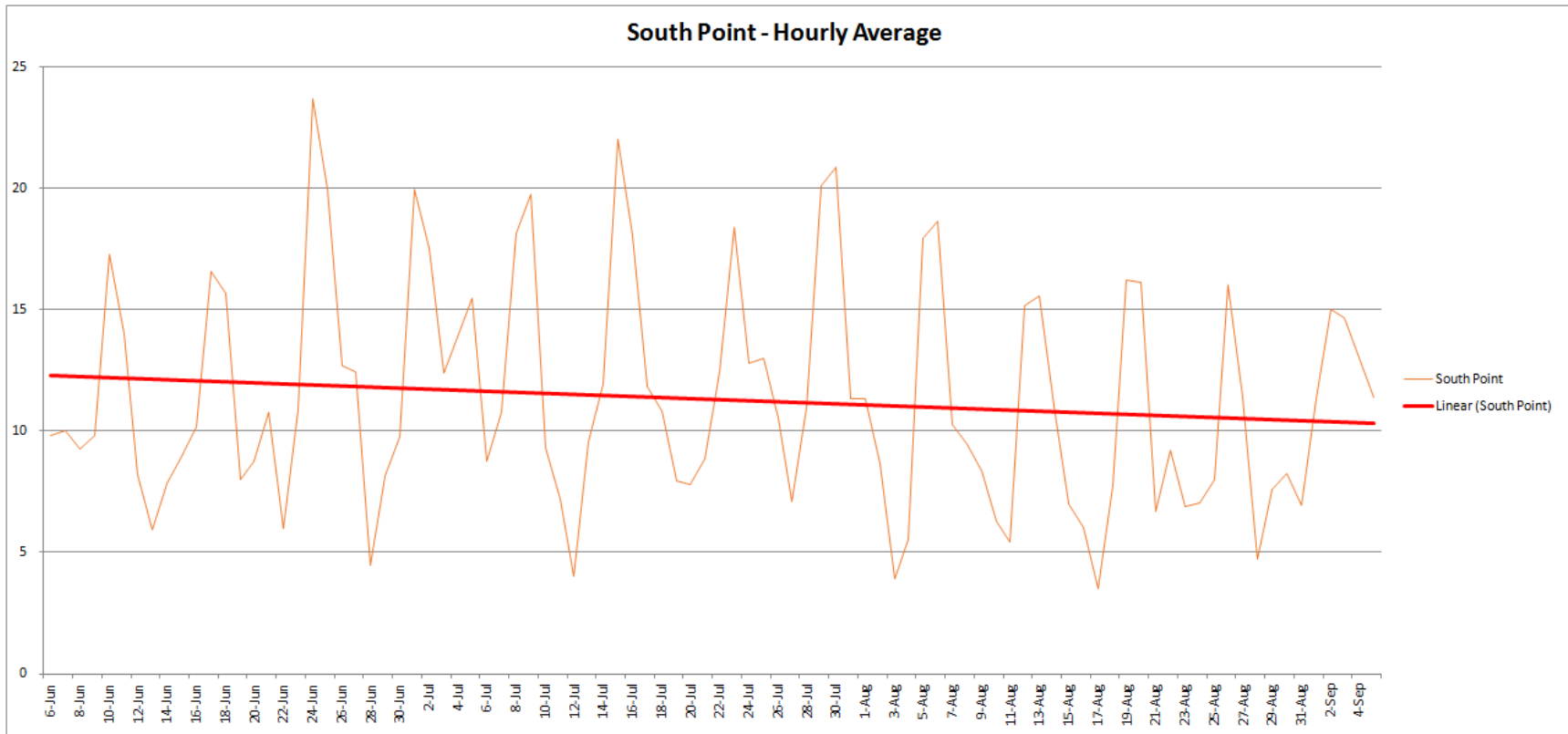
Nakoosa Detail (6/6/17 to 09/05/17)				
	Weekday Weekend			
Totals	36,103	16,332		
Daily Average	564	628		
<b>Comparisons</b>				
	MWF	Tu/Thurs	Sat/Sun	
Totals	19,738	16,365	16,332	
Daily Average	519	629	628	
Hourly Average	61	52	74	
<b>Tuesday/Thursday</b>				
	8:00am to 4:30	4:30 to 8:00pm		
Total Visits	12,731	3,634		
Daily Average	490	140		
Hourly Average	58	40		
<b>Median Total</b> 582				
<b>Daily Comparisons</b>				
	Totals	Days in Sample	Daily Average	Hourly Average
Monday	6,944	12	579	68
Tuesday	8,828	13	679	57
Wednesday	6,083	13	468	55
Thursday	7,537	13	580	48
Friday	6,711	13	516	61
Saturday	8,982	13	691	81
Sunday	7,350	13	565	67
Total	52,435		583	62
	Total	Date	Day	Hourly Avg.
Top Five Days	941	6/27/2017	Tuesday	78
	861	7/25/2017	Tuesday	72
	860	6/24/2017	Saturday	101
	787	7/8/2017	Saturday	93
	777	7/15/2017	Saturday	91
	Total	Date	Day	Hourly Avg.
Bottom Five Days	374	8/27/2017	Sunday	44
	369	8/11/2017	Friday	43
	357	8/4/2017	Friday	42
	328	7/12/2017	Wednesday	39
	308	6/28/2017	Wednesday	36

%  
13  
17  
12  
14  
13  
17  
14

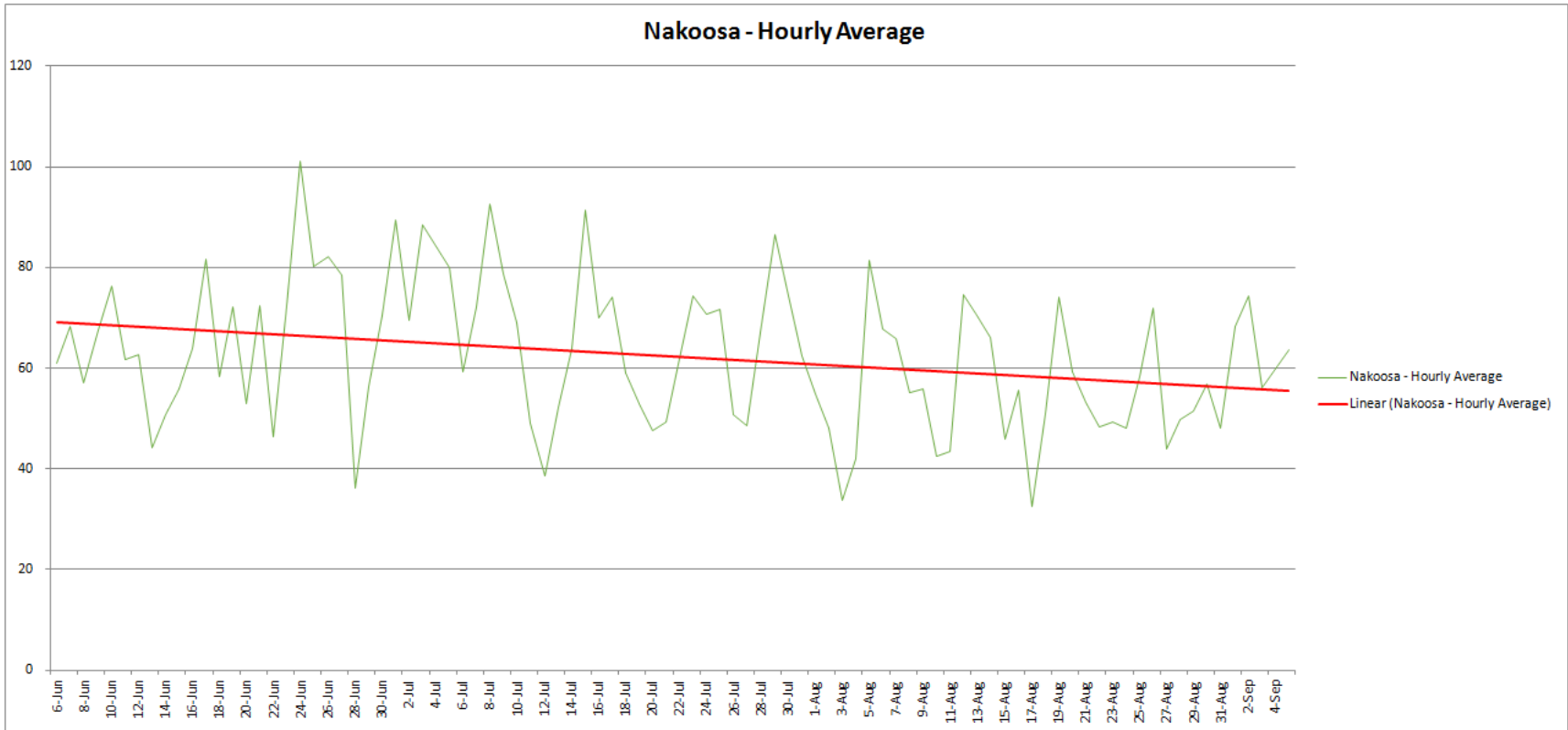
South Point Detail (6/6/17 to 09/05/17)				
	Weekday	Weekend		
Totals	5,579	3,836		
Daily Average	143	240		
<b>Comparisons</b>				
	MWF	Tu/Thurs	Sat/Sun	
Totals	2,972	2,607	3,836	
Daily Average	78	100	148	
Hourly Average	9	8	17	
<b>Tuesday/Thursday</b>				
	8:00am to 4:30	4:30 to 8:00pm		
Total Visits	1,874	732		
Daily Average	72	28		
Hourly Average	8	8		
Median Total	96			
<b>Daily Comparisons</b>				
	Totals	Days in Sample	Daily Average	Hourly Average
Monday	1,013	12	84	10
Tuesday	1,487	13	114	10
Wednesday	929	13	71	8
Thursday	1,120	13	86	7
Friday	1,030	13	79	9
Saturday	1,960	13	151	18
Sunday	1,876	13	144	17
Total	9,415		104	11
<b>Top Six Days</b>				
	Total	Date	Day	Hourly Avg.
	201	6/24/2017	Saturday	24
	187	7/15/2017	Saturday	22
	178	7/30/2017	Sunday	21
	171	7/29/2017	Saturday	20
	170	6/25/2017	Sunday	20
	170	7/1/2017	Saturday	20
<b>Bottom Six Days</b>				
	Total	Date	Day	Hourly Avg.
	46	8/11/2017	Friday	5
	42	8/17/2017	Thursday	4
	40	8/28/2017	Monday	5
	38	6/28/2017	Wednesday	4
	34	7/12/2017	Wednesday	4

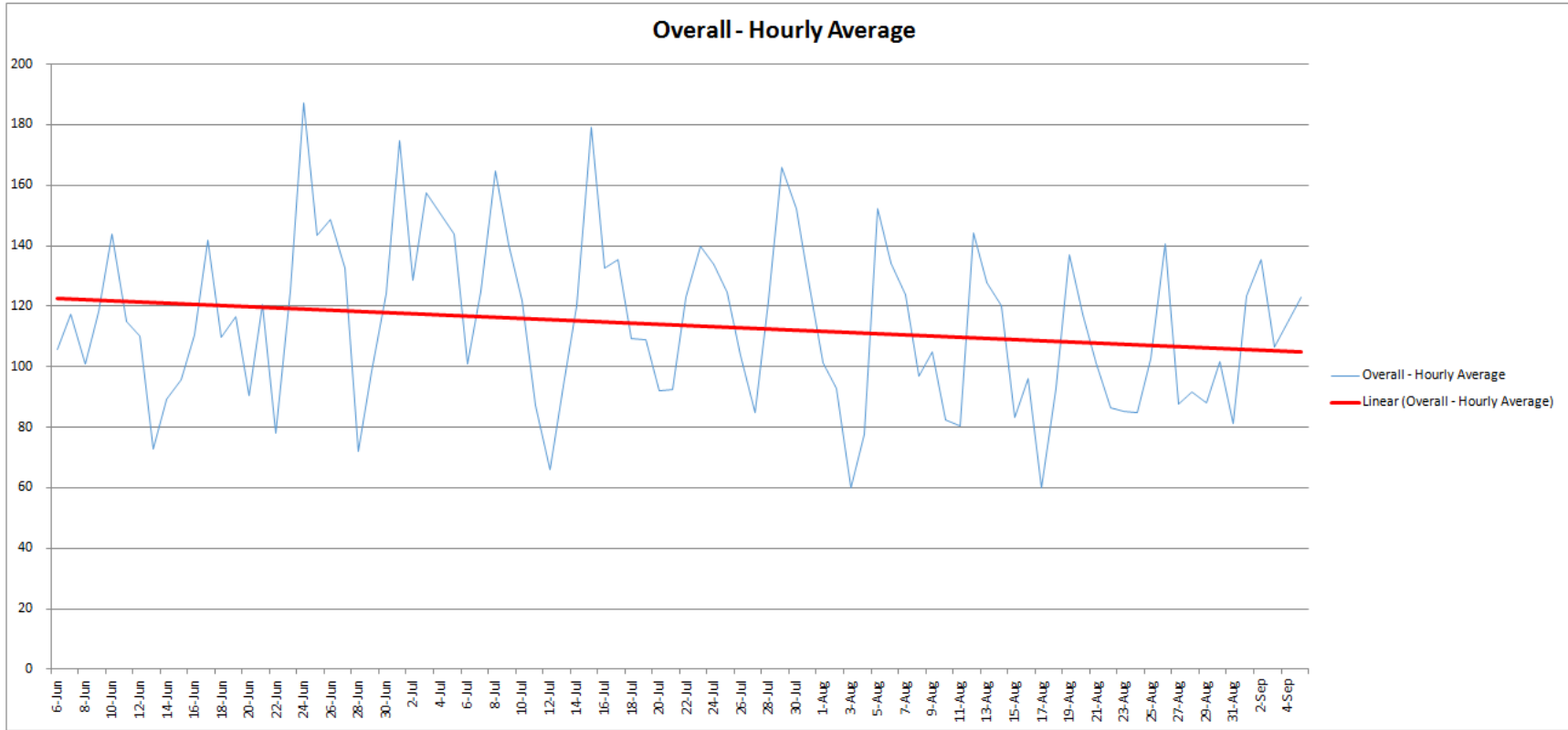
Overall Detail (6/6/17 to 09/05/17)				
	Weekday	Weekend		
Totals	64,692	30,809		%
Daily Average	1,011	1,185		13
<b>Comparisons</b>				
	MWF	Tu/Thurs	Sat/Sun	
Totals	35,730	28,962	30,809	16
Daily Average	940	1,114	1,185	12
Hourly Average	111	93	139	14
<b>Tuesday/Thursday</b>				
	8:00am to 4:30	4:30 to 8:00pm		
Total Visits	23,041	5,921		13
Daily Average	886	228		18
Hourly Average	104	65		15
Median Total	1,050			
<b>Daily Comparisons</b>				
	Totals	Days in Sample	Daily Average	Hourly Average
Monday	12,639	12	1,053	124
Tuesday	15,610	13	1,201	100
Wednesday	11,070	13	852	100
Thursday	13,352	13	1,027	86
Friday	12,022	13	925	109
Saturday	16,911	13	1,301	153
Sunday	13,898	13	1,069	126
Total	95,500		1,061	114
<b>Top Five Days</b>				
	Total	Date	Day	Hourly Avg.
	1591	6/24/2017	Saturday	188
	1589	6/27/2017	Tuesday	132
	1522	7/15/2017	Saturday	179
	1493	7/25/2017	Tuesday	124
	1484	7/1/2017	Saturday	175
<b>Bottom Five Days</b>				
	Total	Date	Day	Hourly Avg.
	719	8/3/2017	Thursday	73
	683	8/11/2017	Friday	80
	659	8/4/2017	Friday	77
	612	6/28/2017	Wednesday	72
	560	7/12/2017	Wednesday	66



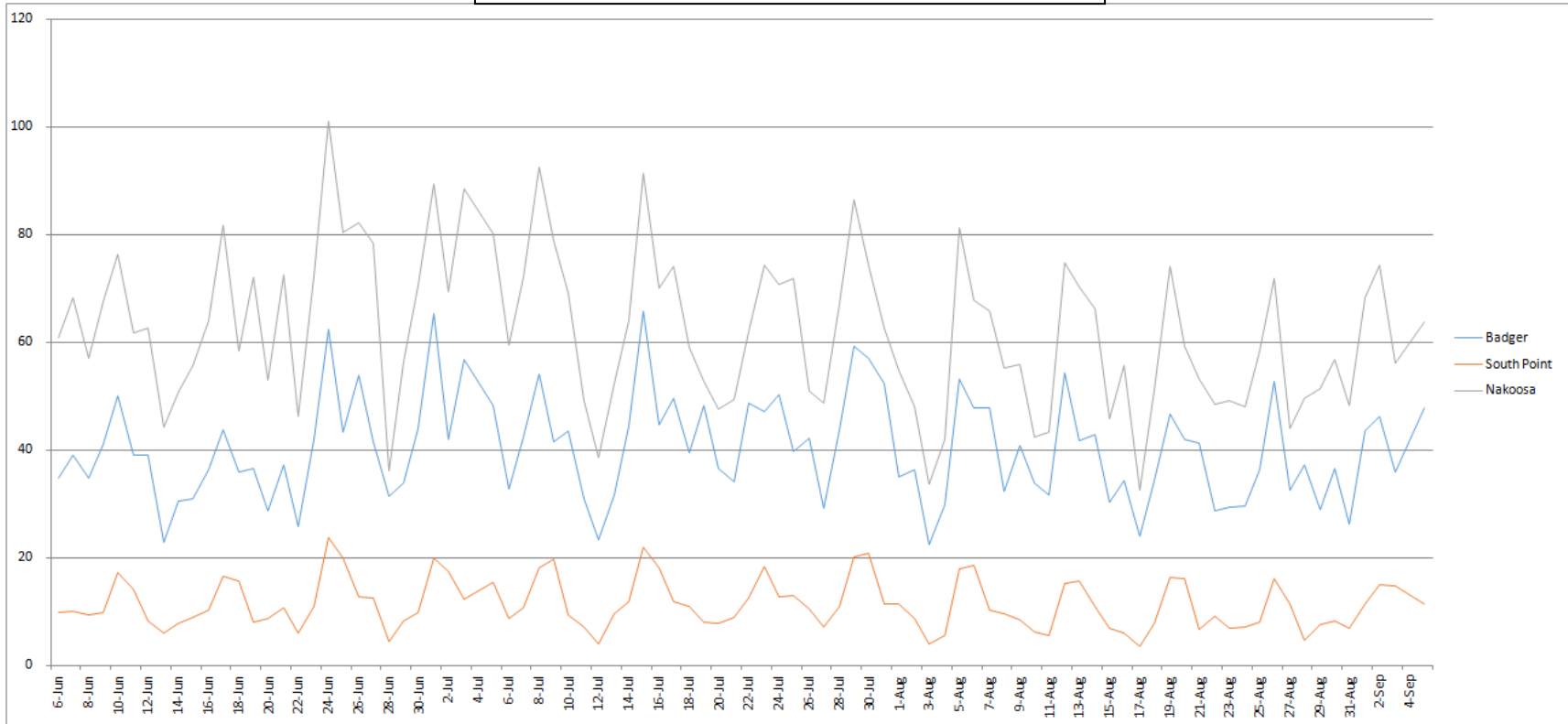








Overall Hourly Average – All Three Sites



Overall Visits – All Three Sites

