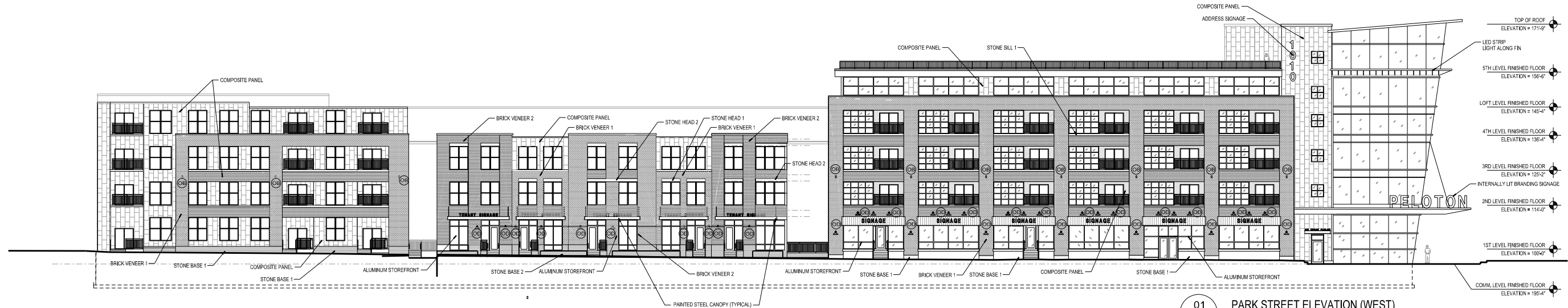
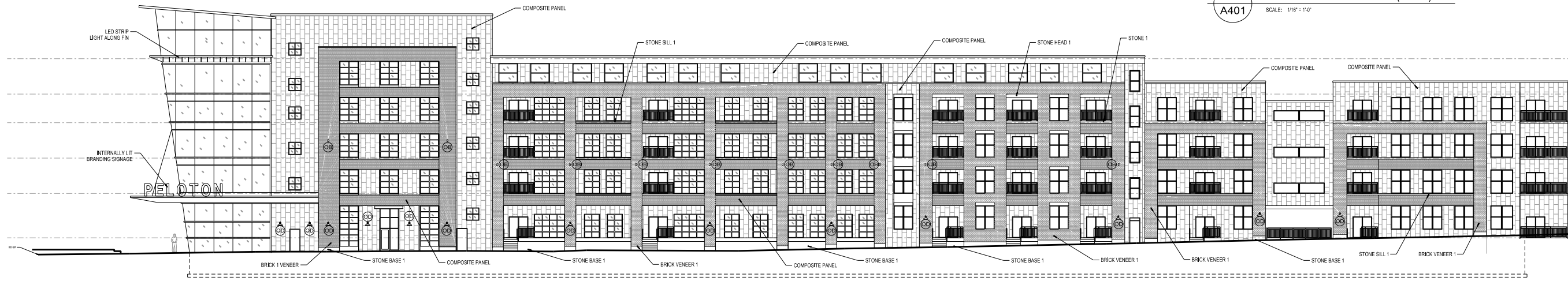


SCALE: 1/16" = 1'-0"  
 PLOTTED BY: EMH

ORIGINAL SIZE = 24" x 36"  
 X:\9830\9830\9830\A401.dgn

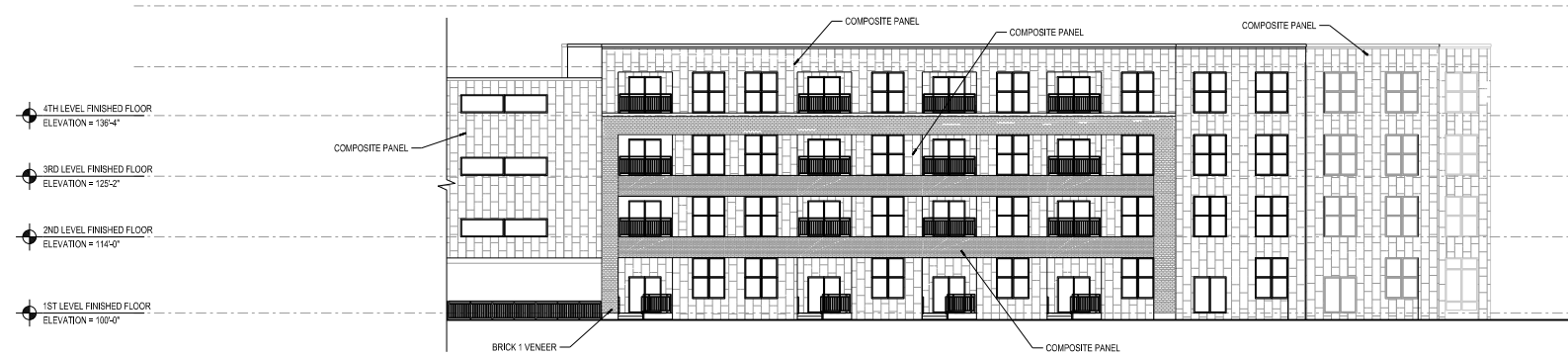


01 PARK STREET ELEVATION (WEST)  
 A401 SCALE: 1/16" = 1'-0"



02 FISH HATCHERY STREET ELEVATION (EAST)  
 A401 SCALE: 1/16" = 1'-0"

EXTERIOR MATERIAL SCHEDULE	
BUILDING MATERIAL	MATERIAL / COLOR
COMPOSITE PANEL	EL ZINC RAINBOW-BROWN
METAL @ DECK EDGES AND CANOPIES	MB1 - SLATE GRAY
WINDOWS & DOORS- STOREFRONT	ANODIZED ALUMINUM
WINDOW SILL- FIBERGLASS & VINYL	GRAY
ALUMINUM RAILINGS	SLATE GRAY
STONE BASE 1	SLATE
STONE BASE 2	TAN
BRICK 1	BOWTERSON AUTUMN BLEND
BRICK 2	SUMMIT - ST. CHARLES
PRECAST STONE SILLS, HEADS, & BANDS 1	SLATE
PRECAST STONE SILLS, HEADS, & BANDS 2	GRAY
STEEL ENTRY CANOPY	SLATE GRAY



03 WEST FACING COURTYARD ELEVATION  
 A401 SCALE: 1/16" = 1'-0"

NOTE: FIXTURE TYPES DETNOTED WITH (X), SEE ELECTRICAL FIXTURE SCHEDULE FOR TYPES.

Due to electronic distribution, this drawing may not be printed to the scale indicated on the drawings. Do NOT use scale to determine dimensions or sizes.

**ANGUS YOUNG**  
 Architecture | Engineering  
 Interiors | Landscape  
 Balance in Creativity  
 Janesville 535 South River Street - Janesville, WI 53548 | Ph: 608.756.2326  
 Madison 10 North Canal Street - Madison, WI 53703 | Ph: 608.254.8225  
 www.angusyouth.com

REVISIONS  
 ISSUANCES  
 UDC INITIAL FINAL APPROVAL PC-05/10/2017  
 UDC FINAL APPROVAL - 06/06/2017  
 Copyright © 2017  
 Angus Young Associates, Inc., All Rights Reserved

PELOTON PLACE RESIDENCES  
 MIXED USE DEVELOPMENT  
 PELOTON RESIDENCES, LLC  
 MADISON, WISCONSIN

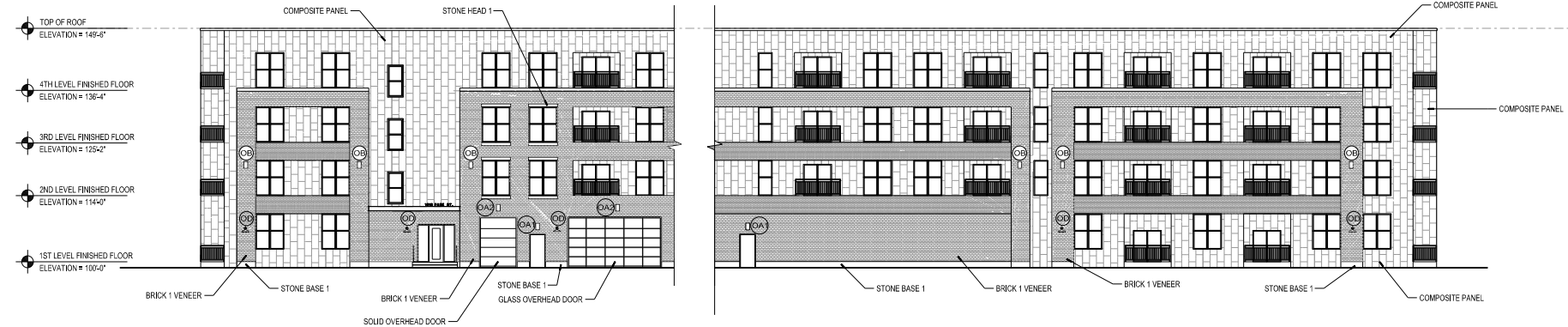
PROJECT NUMBER: 59830  
 APPROVED BY: XXX  
 REVIEWED BY: XXX  
 DRAWN BY: EMH  
 9/22/2017 12:27:15 PM  
 PROPOSED EXTERIOR ELEVATIONS

**PRELIMINARY - NOT FOR CONSTRUCTION**

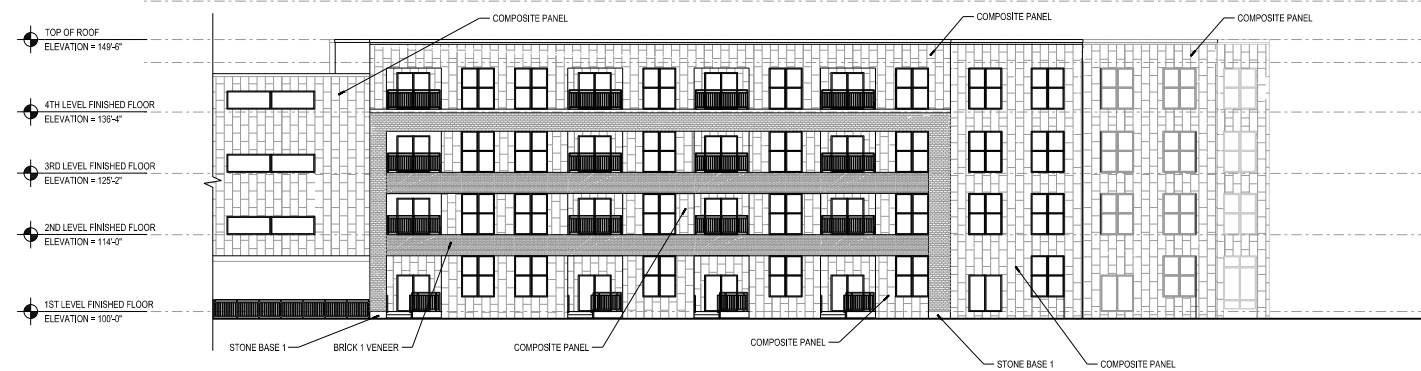
**A401**

SCALE: 1/16" = 1'-0"  
 PLOTTED BY: EMH/ML

ORIGINAL SIZE = 24" x 36"  
 X:\2017\16168303\A402.dwg

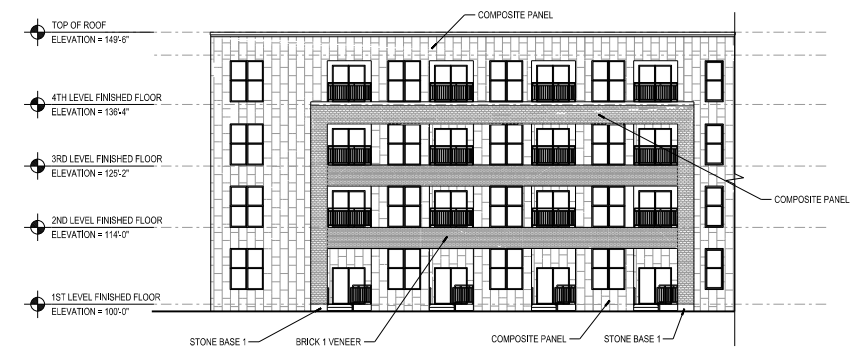


01 SOUTH STREET ELEVATION (SOUTH)  
 A401 SCALE: 1/16" = 1'-0"



02 INTERIOR COURTYARD (WEST)  
 A401 SCALE: 1/16" = 1'-0"

EXTERIOR MATERIAL SCHEDULE	
BUILDING MATERIAL	MATERIAL / COLOR
COMPOSITE PANEL	EL ZINC RAINBOW - BROWN
METAL @ DECK EDGES AND CANOPIES	MBCI - SLATE GRAY
WINDOWS & DOORS - STO REF RNT	AN OXIDIZED ALUMINUM
WINDOWS - FIBERGLASS & VINYL	GRAY
ALUMINUM RAILINGS	SLATE GRAY
STONE BASE 1	SLATE
STONE BASE 2	TAN
BRICK 1	BOWERSTON ALUMINUM BLEND
BRICK 2	SUMMIT - ST. CHARLES
PRECAST STONE SILLS, HEADS, & BANDS 1	SLATE
PRECAST STONE SILLS, HEADS, & BANDS 2	GRAY
STEEL ENTRY CANOPY	SLATE GRAY



03 INTERIOR COURTYARD (SOUTH)  
 A401 SCALE: 1/16" = 1'-0"

NOTE: FIXTURE TYPES DETONATED WITH (⊗) - SEE ELECTRICAL FIXTURE PACKET FOR TYPES.

**PRELIMINARY - NOT FOR CONSTRUCTION**

Due to electronic distribution, this drawing may not be printed to the scale indicated on the drawings. Do NOT use scale to determine dimensions or sizes.

**PELTON PLACE RESIDENCES**  
**MIXED USE DEVELOPMENT**  
**PELTON RESIDENCES, LLC**  
**MADISON, WISCONSIN**

PROJECT NUMBER: 59830  
 APPROVED BY: XXX  
 REVIEWED BY: XXX  
 DRAWN BY: EMH  
 9/22/2017 12:21:27 PM

ISSUANCES:  
 UDC INITIAL/FINAL APPROVAL PC - 05/10/2017  
 UDC FINAL APPROVAL - 06/06/2017

REVISIONS

Copyright © 2017  
 Angus Young Associates, Inc., All Rights Reserved

**Angus Young**  
 Architecture | Engineering  
 Interiors | Landscape  
 Balance in Creativity  
 Janesville, WI 53548 | Ph: 608.756.2326  
 Madison, WI 53703 | Ph: 608.258.8225  
 www.angusyoung.com

**A402**

Symbol	Label	Quantity	Manufacturer	Catalog Number	Description	Lamp	Number Lamps	Lumens Per Lamp	Wattage
□	OA1	6	EATON - LUMARK (FORMER COOPER LIGHTING)	XTOR1B-W	CROSSTOUR 12W WALL MOUNT LED	EATON LED 4000K	1	1396	12.2
□	OA2	5	COOPER LIGHTING - LUMARK	XTOR2A-N	LUMARK CROSSTOUR LED WALL PACK - 20W - 3500K WITH SPECULAR REFLECTOR, CLEAR LENS AND ALUMINUM HEATSINK		1	947	19.8
○	OB	7	UGIMAN	UIE-31771-MW40	Jet square wall-up-down light 4.02 LED	2X7 LED 4000K	2	680	24.6
○	OC	125	EATON - HALO (FORMER COOPER LIGHTING)	ML500840-691WB	HALO 6 INCH ML56 600 SERIES LED DOWNLIGHT WITH WHITE POLYMER BAFFLE REFLECTOR	(1) HIGH LUMEN LED 80CRI / 4000K CCT ABSOLUTE PHOTOMETRY IS BASED ON CALIBRATION FACTORS CREATED USING LAB LUMEN STANDARDS IN GONIOPHOTOMETER WITH TEST DISTANCE OF 28.75 FEET	1	648	9
□	OD	16	RAB LIGHTING, INC.	ONLED13YACBFL00D REFROSTED LENS	CAST FINNED METAL HOUSING, ONE CIRCUIT BOARD WITH ONE LED, SPUN SEMISPECULAR METAL REFLECTOR, FROSTED FLAT GLASS LENS IN CAST BLACK PAINTED METAL TRIM RING, LENS FROSTED SIDE UP.	ONE WHITE MULTICHIP LIGHT EMITTING DIODE (LED) WITH LEDS ARRANGED IN AN ARRAY OF THREE LINEAR ROWS, VERTICAL BASE-UP POSITION, LENS FROSTED SIDE UP.	1	343	15.6

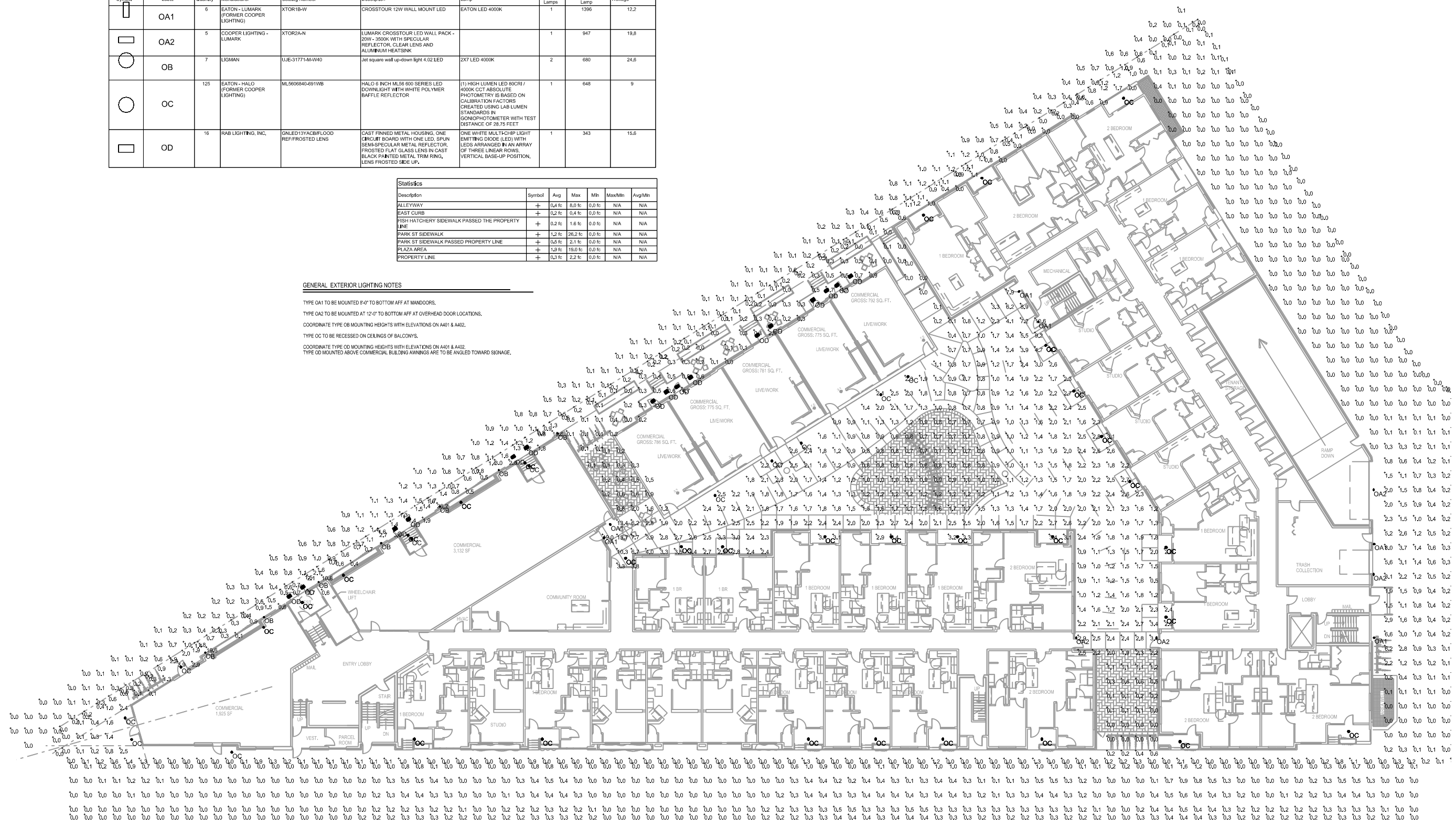
Description	Symbol	Avg	Max	Min	Max/Min	Avg/Min
ALLEYWAY	+	0.4 fc	8.0 fc	0.0 fc	N/A	N/A
EAST CURB	+	0.2 fc	0.4 fc	0.0 fc	N/A	N/A
FISH HATCHERY SIDEWALK PASSED THE PROPERTY LINE	+	0.2 fc	1.6 fc	0.0 fc	N/A	N/A
PARK ST SIDEWALK	+	1.2 fc	26.2 fc	0.0 fc	N/A	N/A
PARK ST SIDEWALK PASSED PROPERTY LINE	+	0.5 fc	2.1 fc	0.0 fc	N/A	N/A
PLAZA AREA	+	1.9 fc	19.0 fc	0.0 fc	N/A	N/A
PROPERTY LINE	+	0.3 fc	2.2 fc	0.0 fc	N/A	N/A

**GENERAL EXTERIOR LIGHTING NOTES**

TYPE OA1 TO BE MOUNTED 8'-0" TO BOTTOM AFF AT MANDOORS.  
 TYPE OA2 TO BE MOUNTED AT 12'-0" TO BOTTOM AFF AT OVERHEAD DOOR LOCATIONS.  
 COORDINATE TYPE OB MOUNTING HEIGHTS WITH ELEVATIONS ON A401 & A402.  
 TYPE OC TO BE RECESSED ON CEILING OF BALCONIES.  
 COORDINATE TYPE OD MOUNTING HEIGHTS WITH ELEVATIONS ON A401 & A402.  
 TYPE OD MOUNTED ABOVE COMMERCIAL BUILDING AWINGS ARE TO BE ANGLED TOWARD SIGNAGE.

SCALE: 1/16"=1'-0"  
 PLOTTED BY: Calik

ORIGINAL SIZE: 24" x 36"  
 X:\2020\16806\168061.dwg



Due to electronic distribution, this drawing may not be printed to the scale indicated on the drawings. Do NOT use scale to determine dimensions or sizes.

REVISIONS
UCD INITIAL/FINAL APPROVAL/PC-05/02/2017
UCD FINAL APPROVAL - 06/06/2017

Architecture | Engineering  
 Interiors | Landscape  
**Angus Young**  
 Balance in Creativity  
 Janesville, WI 53548 | Ph: 608.756.2326  
 Madison, WI 53703 | Ph: 608.264.8225  
 www.angusyong.com

PELTON PLACE RESIDENCES  
 MIXED USE DEVELOPMENT  
 PELTON RESIDENCES, LLC  
 MADISON, WISCONSIN

PROJECT NUMBER	59830
APPROVED BY	XXX
REVIEWED BY	XXX
DRAWN BY	CTK
DATE	9/22/2017 12:17:44 PM

SITE LIGHTING  
 PHOTOMETRICS

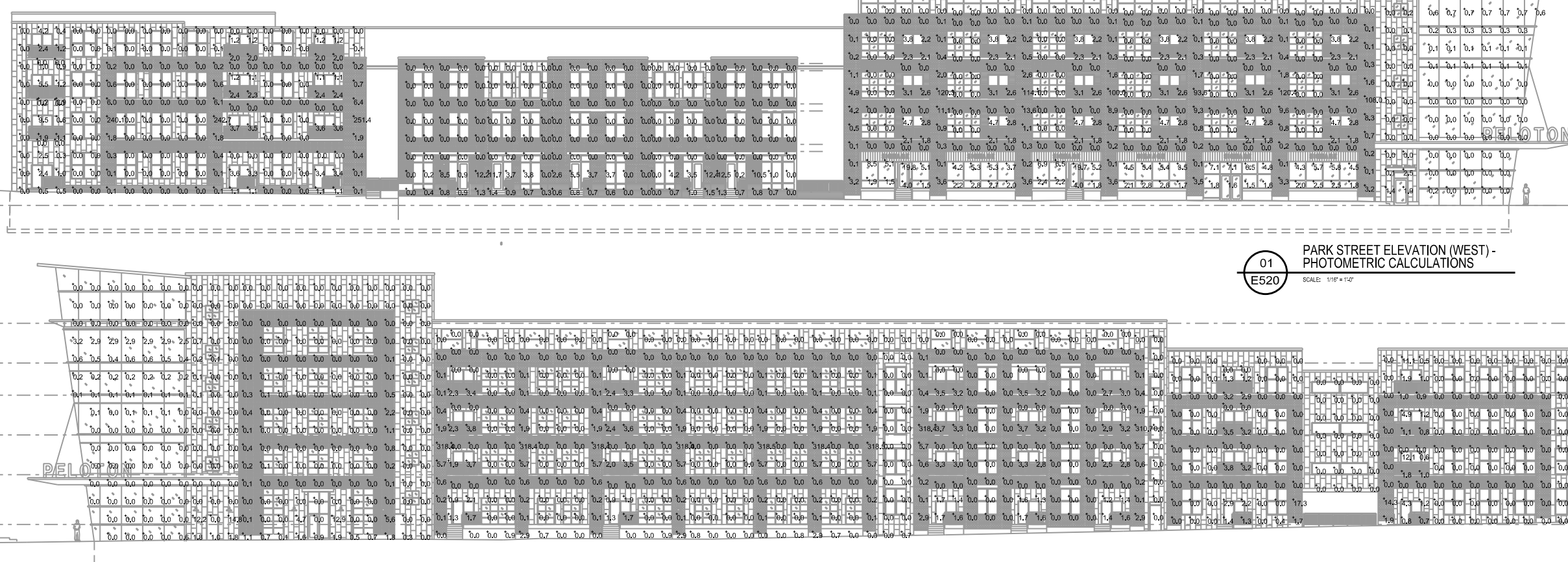
**PRELIMINARY - NOT FOR CONSTRUCTION**

**E510**



SCALE: 1/16"=1'-0"  
 PLOTTED BY: Calkin

ORIGINAL SIZE: 24" x 36"  
 X:\2020\16580\16580.dwg



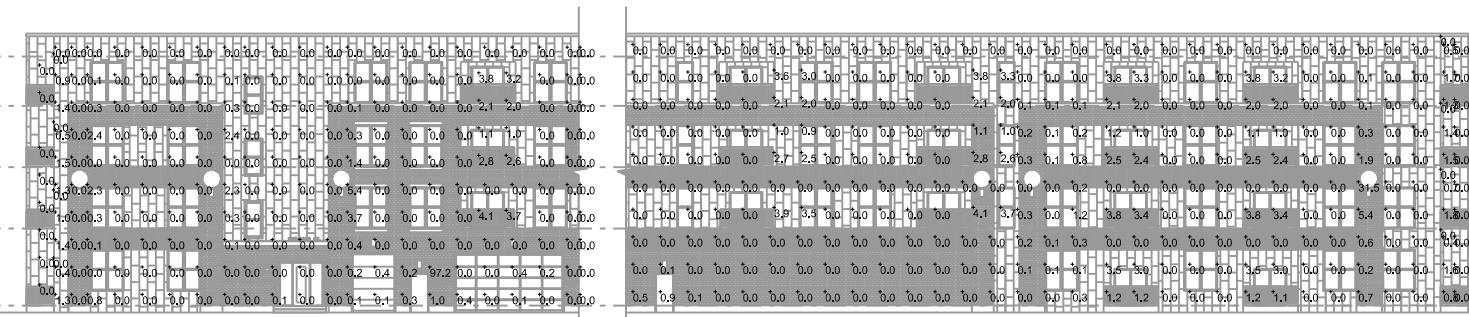
**01**  
**E520**  
 PARK STREET ELEVATION (WEST) -  
 PHOTOMETRIC CALCULATIONS  
 SCALE: 1/16"=1'-0"

**02**  
**E520**  
 FISH HATCHERY STREET ELEVATION (EAST) -  
 PHOTOMETRIC CALCULATIONS  
 SCALE: 1/16"=1'-0"

**03**  
**E520**  
 SOUTH STREET ELEVATION -  
 PHOTOMETRIC CALCULATIONS  
 SCALE: 1/16"=1'-0"

Statistics					
Description	Symbol	Avg	Max	Min	Avg/Min
FISH HATCHERY STREET ELEVATION		3.2 fc	318.5 fc	0.0 fc	N/A
PARK STREET ELEVATION		2.4 fc	251.4 fc	0.0 fc	N/A
SOUTH STREET ELEVATION		0.6 fc	97.2 fc	0.0 fc	N/A

Schedule						
Symbol	Label	Catalog Number	Description	Lamp	Number Lamps	Wattage
□	OA1	XTOR1B-W	CROSSTOUR 12W WALL MOUNT LED	EATON LED 4000K	1	1395.79
□	OA2	XTOR2A-N	LUMARK CROSSTOUR LED WALL PACK - 20W - 3500K WITH SPECULAR REFLECTOR, CLEAR LENS AND ALUMINUM HEAT-SINK		1	947.0974
○	OB	UJE-317714M-W40	Jet square wall up-down light 4.02 LED	2X7 LED 4000K	2	860.2892
○	OC	ML560840-691WB	HALO 6 INCH MLS6 600 SERIES LED DOWNLIGHT WITH WHITE POLYMER BAFFLE REFLECTOR	(1) HIGH LUMEN LED 80CRI / 4000K CCT ABSOLUTE PHOTOMETRY IS BASED ON CALIBRATION FACTORS CREATED USING LAB LUMEN STANDARDS IN GONOPHOTOMETER WITH TEST DISTANCE OF 28.75 FEET	1	647.9351
□	OD	GNLED13YACB/FLOOD	REFROSTED LENS CAST FINNED METAL HOUSING, ONE CIRCUIT BOARD WITH ONE LED, 3PIN SEMI-SPECULAR METAL REFLECTOR, FROSTED FLAT GLASS LENS IN CAST BLACK PAINTED METAL TRIM RING, LENS FROSTED SIDE UP.	ONE WHITE MULTI-CHIP LIGHT EMITTING DIODE (LED) WITH LENS ARRANGED IN AN ARRAY OF THREE LINEAR ROWS, VERTICAL BASE-UP POSITION.	1	342.7156
	OF	FLEX TAPE WW WP	61-3161L X 1/2"W X 5-32"H FLEX STRIP WARM WHITE LED 131102L X 1/2"W. MODULE HAS 3 WARM WHITE LEDS WITH 5M SPACING 31 MODULES, TOTAL 93 WARM WHITE LEDS.		1	307.9016



Due to electronic distribution, this drawing may not be printed to the scale indicated on the drawings. Do NOT use scale to determine dimensions or sizes.

PROJECT NUMBER: 59830  
 APPROVED BY: XXX  
 REVIEWED BY: XXX  
 DRAWN BY: CTK  
 9/22/2017 12:45:19 PM

ISSUANCES:  
 UDC INITIAL APPROVAL - PC - 05/10/2017  
 UDC FINAL APPROVAL - 06/06/2017

REVISIONS

**Angus Young**  
 Architecture | Engineering  
 Interiors | Landscape

Balance in Creativity

Madison, WI 53705 | Ph: 608.796.2326  
 Milwaukee, WI 53201 | Ph: 608.284.8225  
 www.angusyong.com

PELTON PLACE RESIDENCES  
 MIXED USE DEVELOPMENT  
 PELOTON RESIDENCES, LLC  
 MADISON, WISCONSIN

ELEVATION LIGHTING  
 PHOTOMETRIC  
 CALCULATIONS

**E520**

PRELIMINARY - NOT FOR CONSTRUCTION