



City of Madison

Conditional Use

Location
1529 Gilson Street

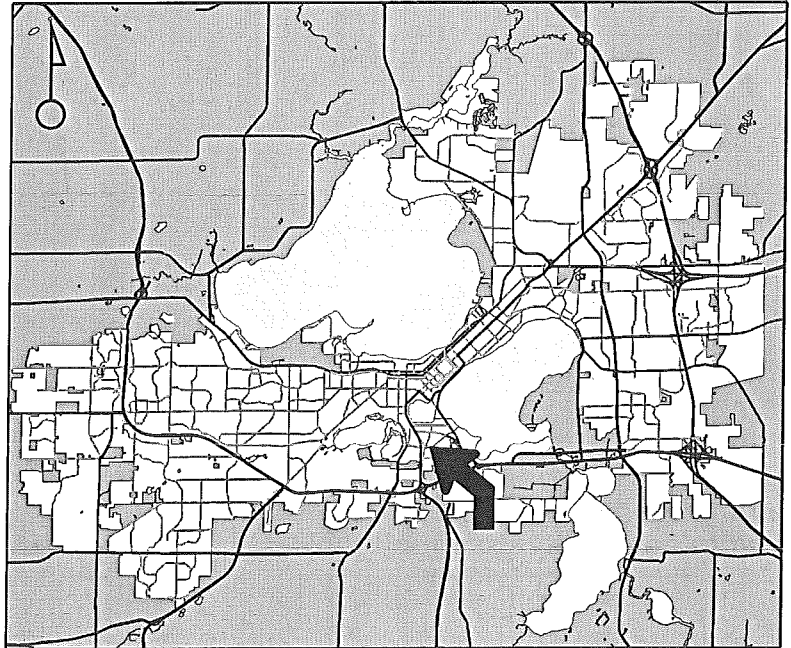
Project Name
Funk Factory Expansion

Applicant
Curt Roeming, Brown Building, LLC /
Amanda Funk, Funk Factory

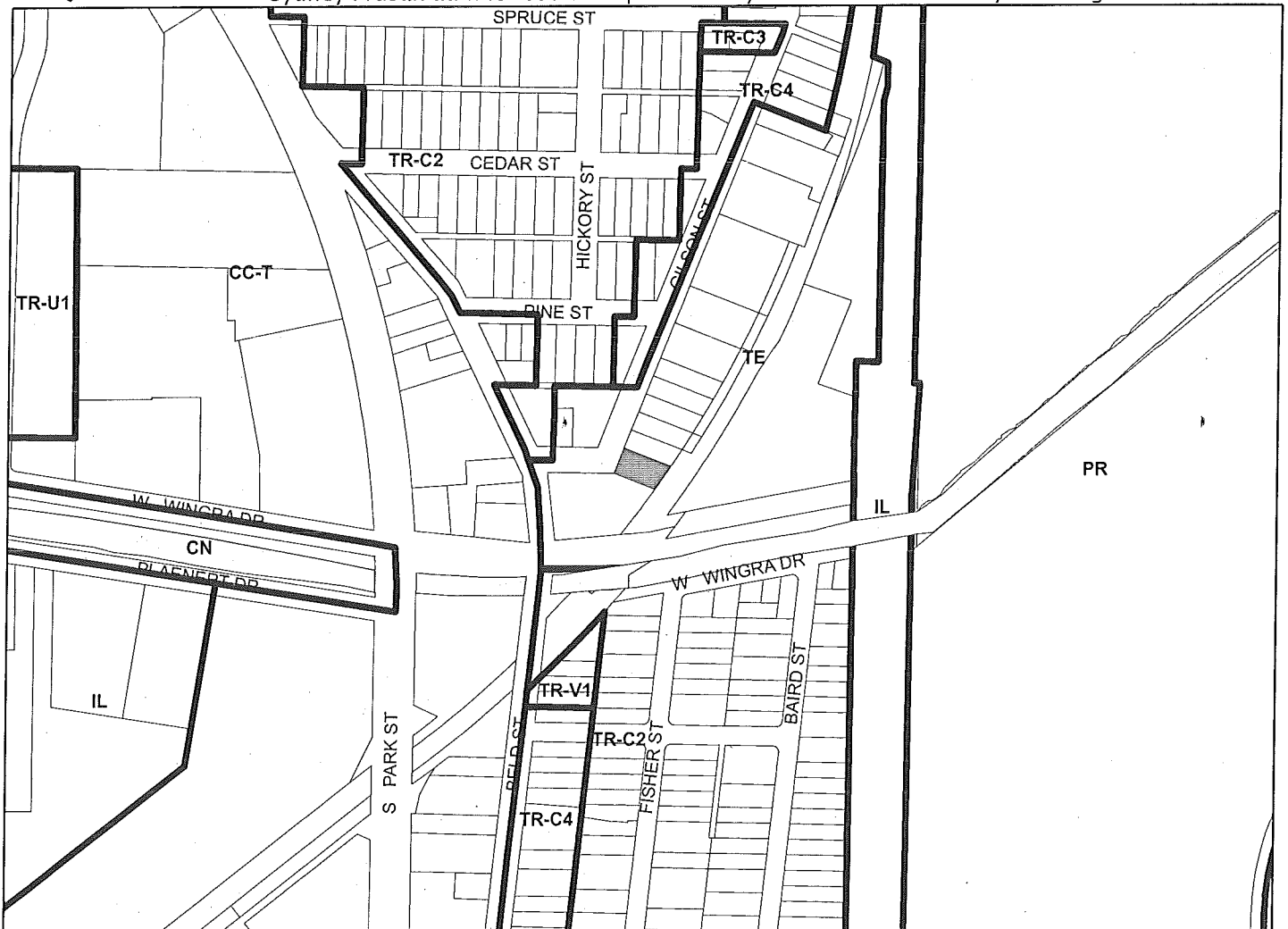
Existing Use
Warehouse

Proposed Use
Convert warehouse into brewery

Public Hearing Date
Plan Commission
14 January 2019



For Questions Contact: Sydney Prusak at: 243-0554 or sprusak@cityofmadison.com or City Planning at 266-4635



Scale : 1" = 400'

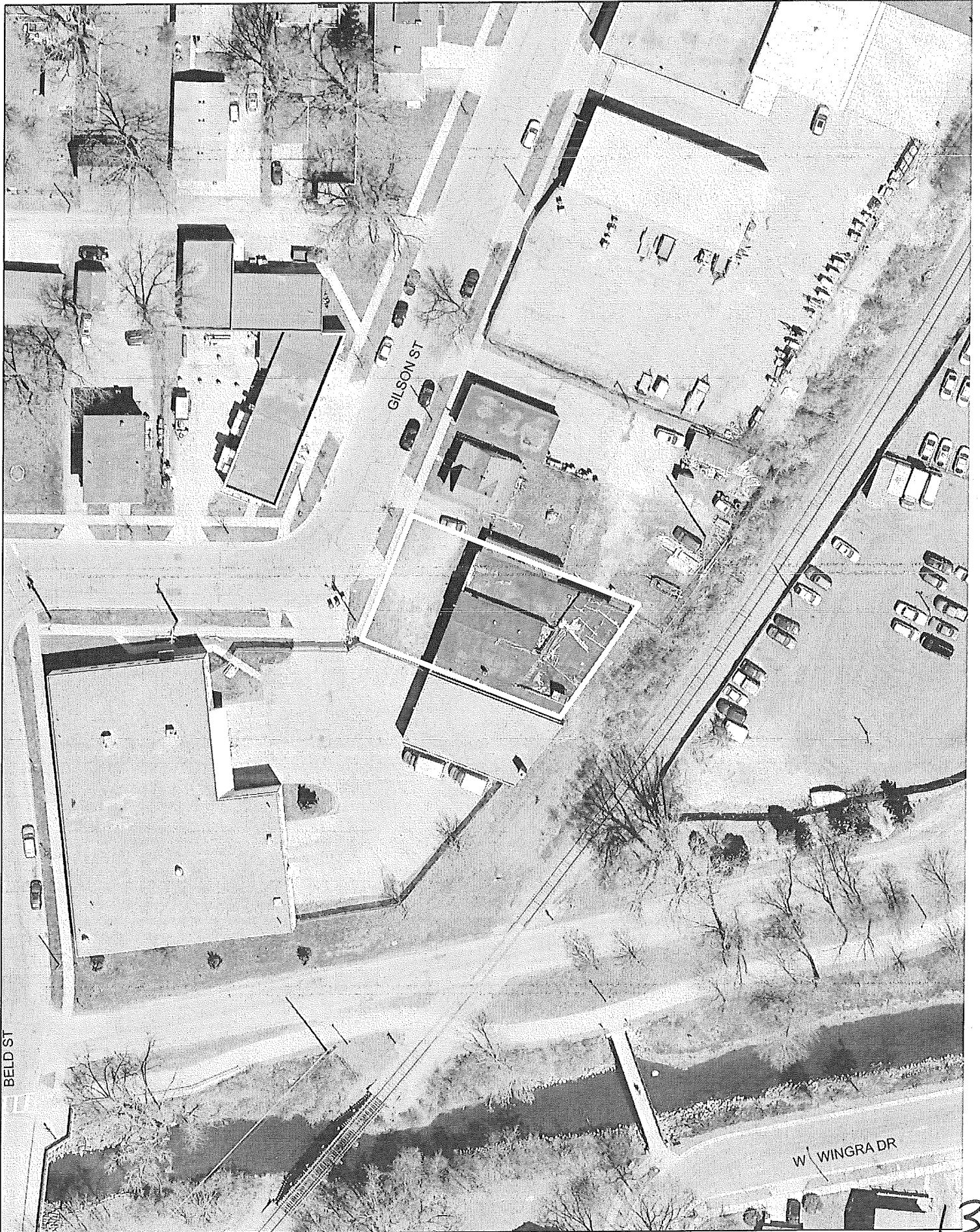
City of Madison, Planning Division : PPE : Date : 1 January 2019

13



City of Madison

1529 Gilson Street



13