

06 Sep 2011 - 2:42p C:\Users\jdoj\Desktop\E-mails\Base (090611).dwg by: jdoj

- UTILITY NOTES:**
- PRIVATE WATER MAIN AND SERVICES SHALL BE DUCTILE IRON (AWWA C-151, CLASS 52) OR APPROVED EQUAL MATERIAL THAT CONFORMS TO COMM 84.30(4)(c).
 - PRIVATE SANITARY SEWER AND LATERALS SHALL BE POLYVINYL CHLORIDE (PVC) ASTM D3034 - SDR 35 OR APPROVED EQUAL MATERIAL THAT CONFORMS TO COMM 84.30(2)(c).
 - A MEANS TO LOCATE BURIED UNDERGROUND EXTERIOR NON METALLIC SEWERS/MAINS AND WATER SERVICES/MAINS MUST BE PROVIDED WITH TRACER WIRE OR OTHER METHODS IN ORDER TO BE LOCATED PER COMM 82.10(11)(h) AND COMM 82.40(8)(k).
 - EXTERIOR WATER SUPPLY PIPING SETBACKS AND CROSSINGS SHALL BE IN ACCORDANCE WITH COMM 82.40(8)(b).
 - NO PERSON MAY ENGAGE IN WORK AT PLUMBING IN THE STATE UNLESS LICENSED TO DO SO BY THE DEPARTMENT OF COMMERCE PER S.145.06.
 - SITE CONTRACTOR SHALL LEAVE SANITARY AND WATER LATERALS FIVE (5) FEET SHORT (HORIZONTALLY) FROM THE BUILDING. BUILDING PLUMBER SHALL VERIFY SIZE AND EXACT LOCATION OF PROPOSED SANITARY AND WATER LATERALS.
 - CONTRACTOR SHALL FIELD VERIFY THE SIZE, TYPE, LOCATION, AND ELEVATION OF EXISTING UTILITIES PRIOR TO INSTALLING ANY ON-SITE UTILITIES OR STRUCTURES. CONTACT ENGINEER PRIOR TO INSTALLATION IF DISCREPANCY EXISTS WITHIN THESE PLANS.
 - PROPOSED UTILITY SERVICE LINES AS SHOWN ARE APPROXIMATE. COORDINATE THE EXACT LOCATIONS WITH THE PLUMBING DRAWINGS. COORDINATE THE LOCATIONS WITH THE PLUMBING CONTRACTOR AND/OR OWNER'S CONSTRUCTION REPRESENTATIVE PRIOR TO INSTALLATION OF ANY NEW UTILITIES.
 - CONTRACTOR SHALL BE RESPONSIBLE FOR COORDINATING THE RELOCATION OF ANY UTILITIES ENCOUNTERED AND REPLACEMENT OF ANY UTILITIES DAMAGED WITHIN INFLUENCE ZONE OF NEW CONSTRUCTION. CONTACT ENGINEER IF THE EXISTING UTILITIES VARY APPRECIABLY FROM THE PLANS.
 - ALL WATER MAIN AND SERVICES SHALL BE INSTALLED AT A MINIMUM DEPTH OF 6.5' FROM TOP OF FINISHED GROUND ELEVATION TO TOP OF MAIN.
 - CLEAN OUT ALL EXISTING AND PROPOSED STORM INLETS AND CATCH BASINS AT THE COMPLETION OF CONSTRUCTION.
 - EXISTING WATER AND SANITARY LATERALS MUST BE PROPERLY ABANDONED PER CITY REQUIREMENTS.
 - CONTRACTOR SHALL OBTAIN ANY NECESSARY WORK IN RIGHT-OF-WAY, EXCAVATION, UTILITY CONNECTION, PLUGGING, ABANDONMENT, AND DRIVEWAY CONNECTION PERMITS PRIOR TO CONSTRUCTION.

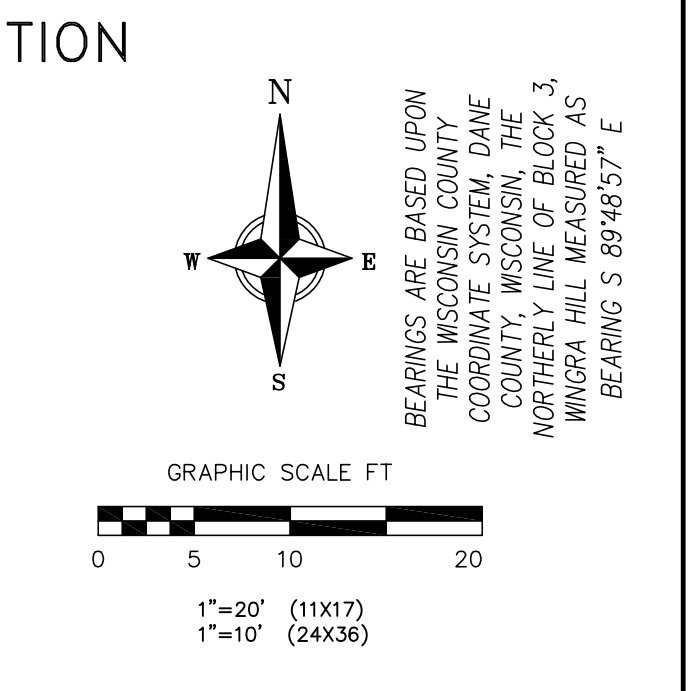
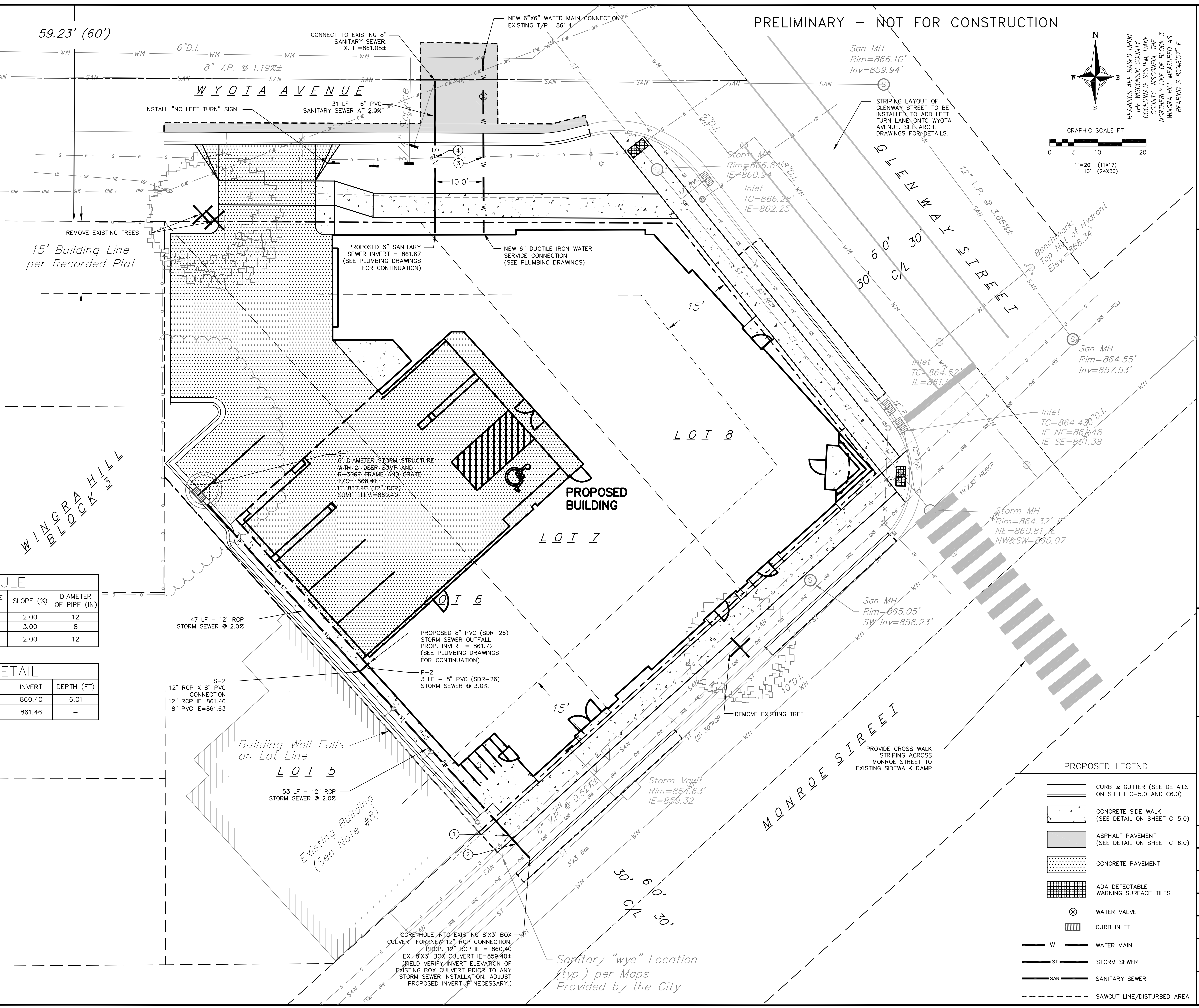
- UTILITY CROSSINGS**
- EX GAS T/P=863.06± (30" DEEP)
EX GAS B/P=862.81± (Field Verify Size)
PROP. 12" RCP ST T/P=861.70
PROP. 12" RCP ST INV=860.53
 - PROP. 12" RCP ST INV=860.48
PROP. 12" RCP ST B/P=860.31
EX 6" SAN T/P=858.3±
EX 6" SAN INV=857.8±
 - EX GAS T/P=865.0± (30" DEEP)
EX GAS B/P=864.75± (Field Verify Size)
PROP. 6" DIP WM T/P=861.0
PROP. 6" DIP WM B/P=860.42
 - EX GAS T/P=865.4± (30" DEEP)
EX GAS B/P=865.15± (Field Verify Size)
PROP. 6" PVC SAN T/P=861.88
PROP. 6" PVC SAN INV=861.37

STORM SEWER PIPE SCHEDULE

PIPE NUMBER	FROM (UPSTREAM)	TO (DOWNSTREAM)	LENGTH (FT)	INLET INVERT	DISCHARGE INVERT	SLOPE (%)	DIAMETER OF PIPE (IN)
P-1	S-1	S-2	47	862.40	861.46	2.00	12
P-2	BUILDING	12" RCP	3	861.72	861.63	3.00	8
P-3	S-2	8'X3' BOX CULVERT	53	861.46	860.40	2.00	12

STORM SEWER STRUCTURE DETAIL

STRUCTURE NUMBER	TYPE	GRATE/LID TYPES	TOP OF CASTING	INVERT	DEPTH (FT)
S-1	6" DIAMETER INLET W/2" SUMP	R-3067	866.41	860.40	6.01
S-2	12" RCP WITH 8" PVC BLIND TAP CONNECTION	-	-	861.46	-



vierbicher
planners engineers advisors
REEDSBURG - MADISON - FRAIRIE DU CHIEN
999 Fuller Drive, Suite 202, Madison, Wisconsin 53717
Phone: (608) 833-3332 Fax: (608) 833-3333

UTILITY PLAN
PARMAN PLACE
728 GLENWAY STREET
CITY OF MADISON, WISCONSIN

PROPOSED LEGEND

- CURB & GUTTER (SEE DETAILS ON SHEET C-5.0 AND C6.0)
- CONCRETE SIDE WALK (SEE DETAIL ON SHEET C-5.0)
- ASPHALT PAVEMENT (SEE DETAIL ON SHEET C-6.0)
- CONCRETE PAVEMENT
- ADA DETECTABLE WARNING SURFACE TILES
- WATER VALVE
- CURB INLET
- W WATER MAIN
- ST STORM SEWER
- SAN SANITARY SEWER
- SAW CUT LINE/DISTURBED AREA

REVISIONS	NO.	DATE	REMARKS
1	1	8-24-11	STORMWATER REPORT TO CITY OF MADISON

SCALE: 1"=20' (11X17), 1"=10' (24X36)
DATE: 5-24-11
DRAFTER: TCOY
CHECKED: JDOY
PROJECT NO.: 35107454
SHEET: 4 OF 6
DWG. NO.: C-4.0