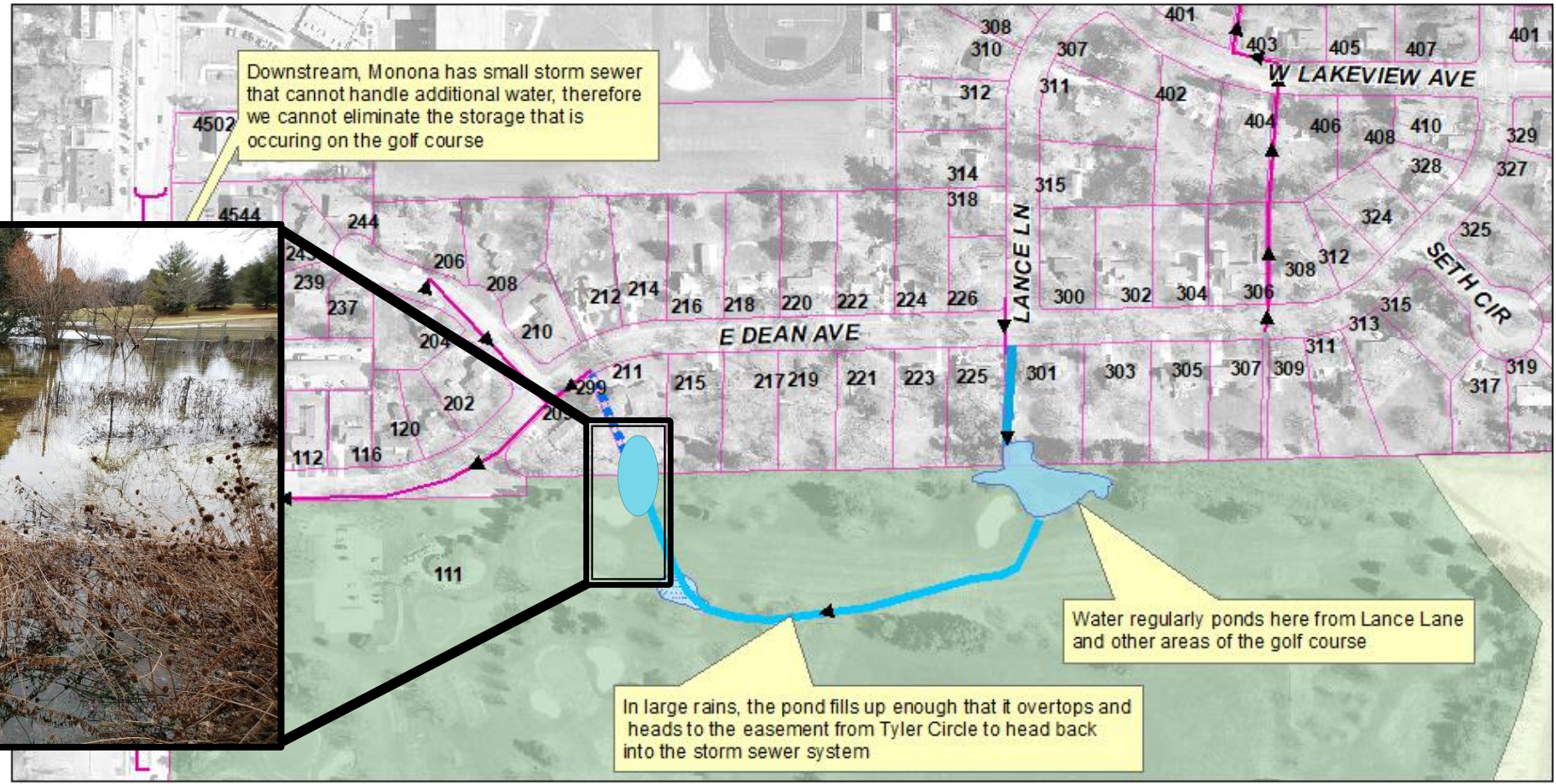
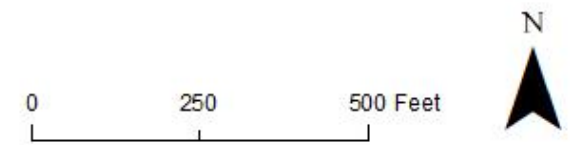


# Monona Golf Course - Part of Stormwater System

Property line

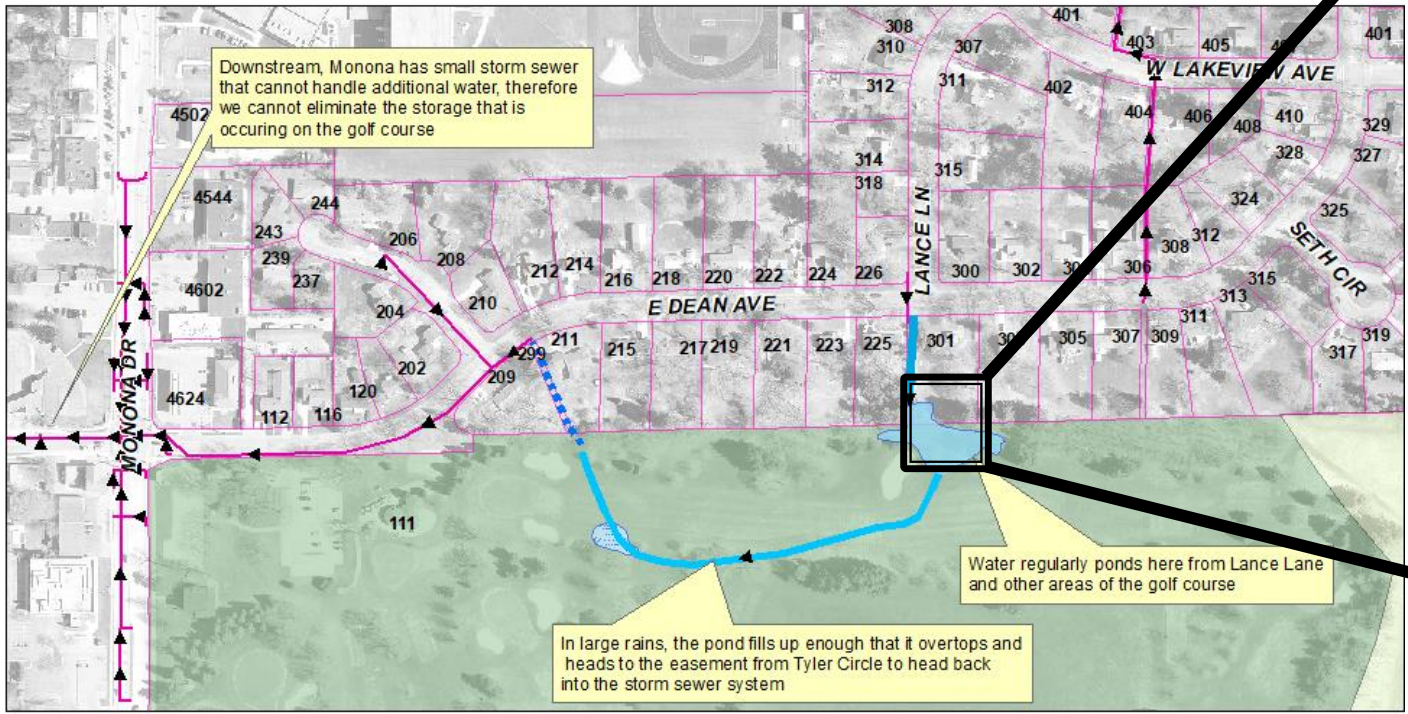


- ▬▬▬ Intended flowpath, but does not drain well
- ▬▶ Overland flow of stormwater
- ▬▶ Stormwater Pipes
- Water ponds in spring or high runoff event
- Fairway can be wet
- Ownership Parcels
- Monona Golf Course
- Monona Park



# Monona Golf Course - Part of Stormwater System

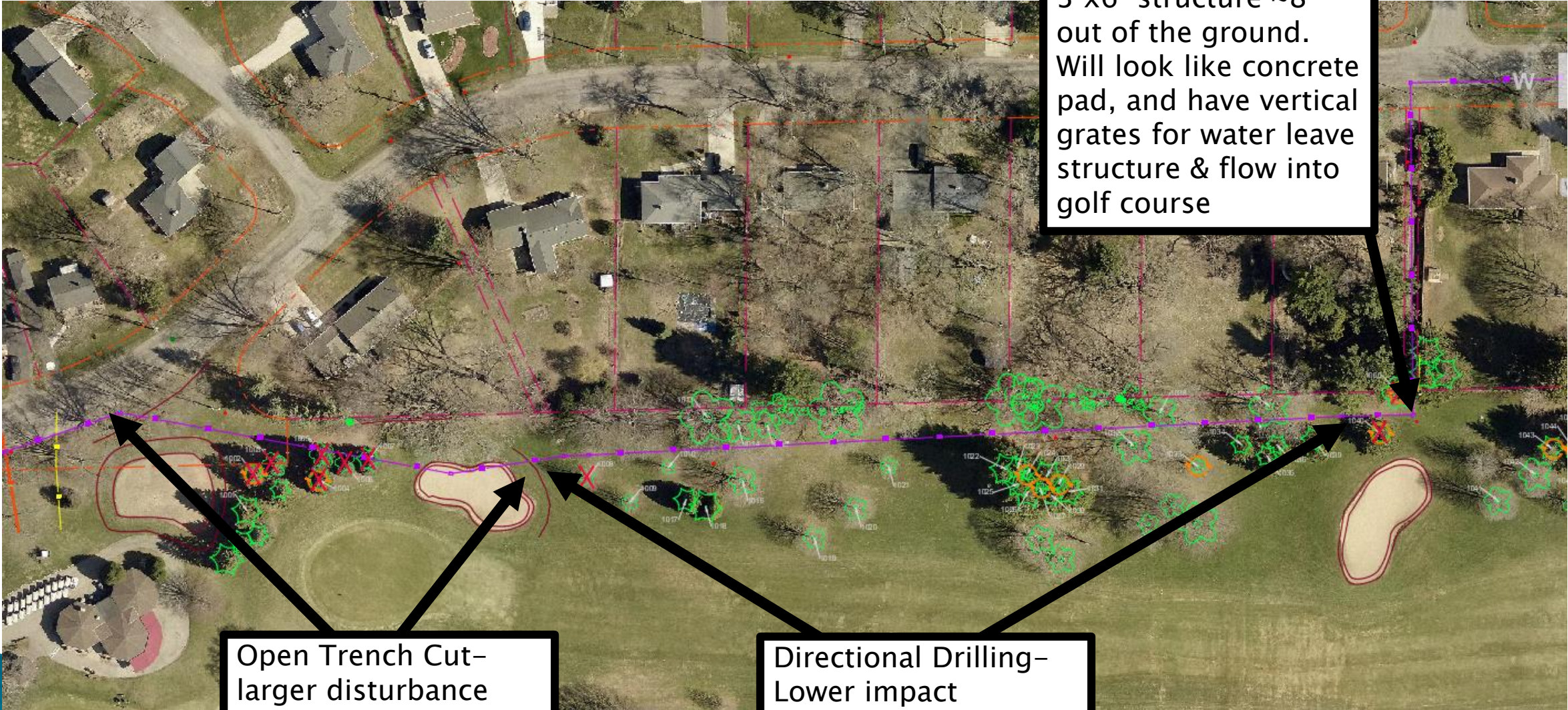
Property line



- ..... Intended flow path, but does not drain well
- > Overland flow of stormwater
- > Stormwater Pipes
- Water ponds in spring or high runoff event
- Fairway can be wet
- Ownership Parcels
- Monona Golf Course
- Monona Park



# Proposed Sewer Layout



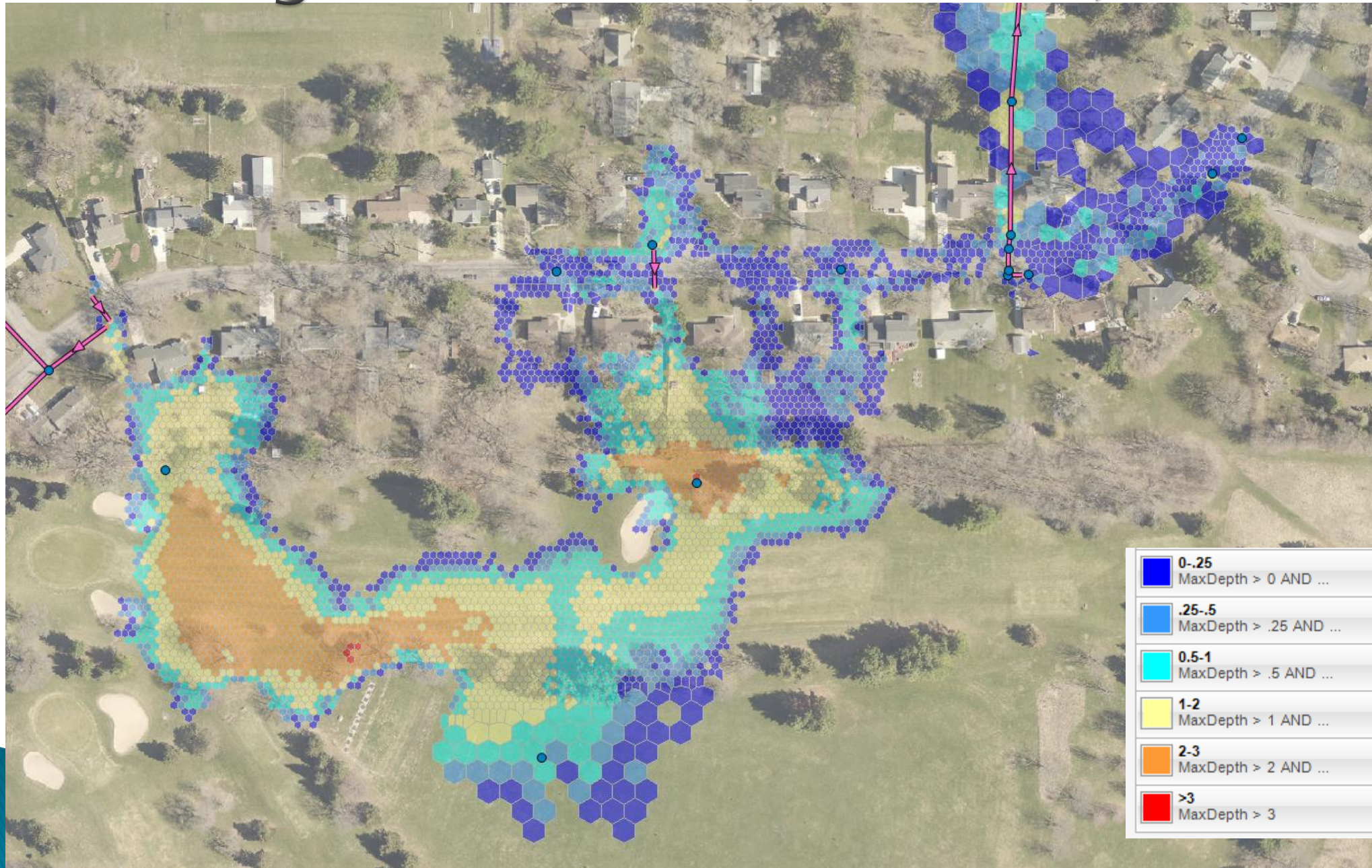
3'x6' structure ~8" out of the ground. Will look like concrete pad, and have vertical grates for water leave structure & flow into golf course

Open Trench Cut—larger disturbance area but necessary due to bedrock

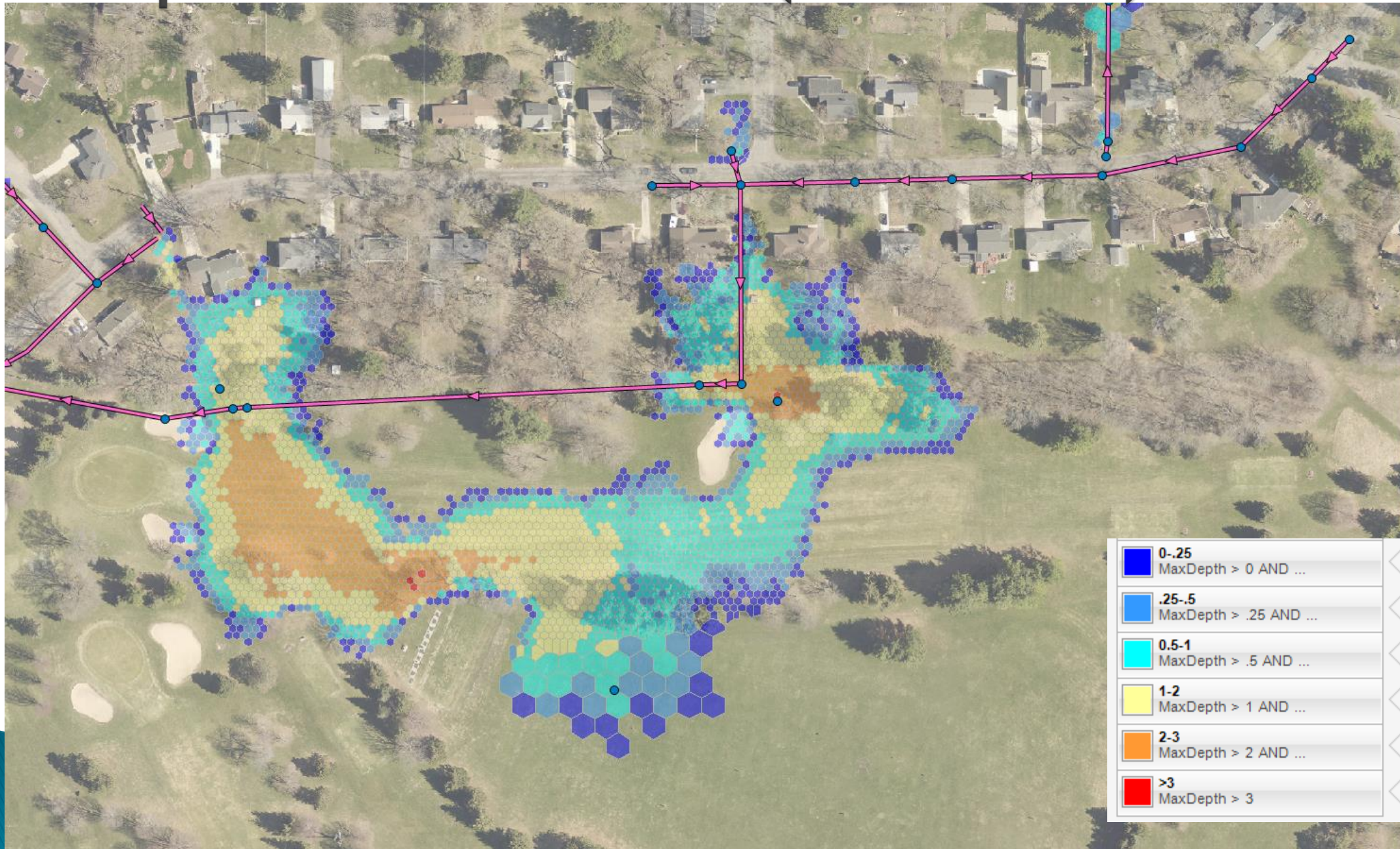
Directional Drilling—Lower impact



# Existing 1% chance (100-Year)



# Proposed 1% chance (100-Year)



# Summary of Project Benefits

- ▶ Reduces flood risk of golf course's neighbors on Dean
- ▶ Will lessen impact of smaller storm events on golf course and neighbors
- ▶ Provides outlet to enclosed depression—flood water can recede quicker
  - Will allow a place for water to exit golf course when the ground is frozen and cannot infiltrate
- ▶ Golf course stormwater component is essential to reconstructing Dean Ave
- ▶ Construction timing will be coordinated to reduce impact on golf play
- ▶ Street reconstruction should have limited impacts to golf course access