

**APPLICATION FOR
URBAN DESIGN COMMISSION
REVIEW AND APPROVAL**

AGENDA ITEM # _____
Project # _____

DATE SUBMITTED: <u>06.09.10</u>	Action Requested
UDC MEETING DATE: _____	<input type="checkbox"/> Informational Presentation
	<input type="checkbox"/> Initial Approval and/or Recommendation
	<input checked="" type="checkbox"/> Final Approval and/or Recommendation

PROJECT ADDRESS: 1501-1507 WRIGHT STREET 3502-3534 STRAUBEL STREET
ALDERMANIC DISTRICT: _____

OWNER/DEVELOPER (Partners and/or Principals) ARCHITECT/DESIGNER/OR AGENT:
COMMUNITY DEVELOPMENT AUTHORITY DIMENSION IV MADISON
215 MARTIN LUTHER KING JR #318 6515 GRAND TETON PLAZA, SUITE 120
MADISON WI-53703 MADISON WI-53719

CONTACT PERSON: JIM GERSICH
Address: 6515 GRAND TETON PLAZA, SUITE 120
MADISON WI-53719
Phone: 608.829.4444
Fax: 608.829.4445
E-mail address: jgersich@dimensionivmadison.com

- TYPE OF PROJECT:
(See Section A for:)
- Planned Unit Development (PUD)
 - General Development Plan (GDP)
 - Specific Implementation Plan (SIP)
 - Planned Community Development (PCD)
 - General Development Plan (GDP)
 - Specific Implementation Plan (SIP)
 - Planned Residential Development (PRD)
 - New Construction or Exterior Remodeling in an Urban Design District * (A public hearing is required as well as a fee)
 - School, Public Building or Space (Fee may be required)
 - New Construction or Addition to or Remodeling of a Retail, Hotel or Motel Building Exceeding 40,000 Sq. Ft.
 - Planned Commercial Site

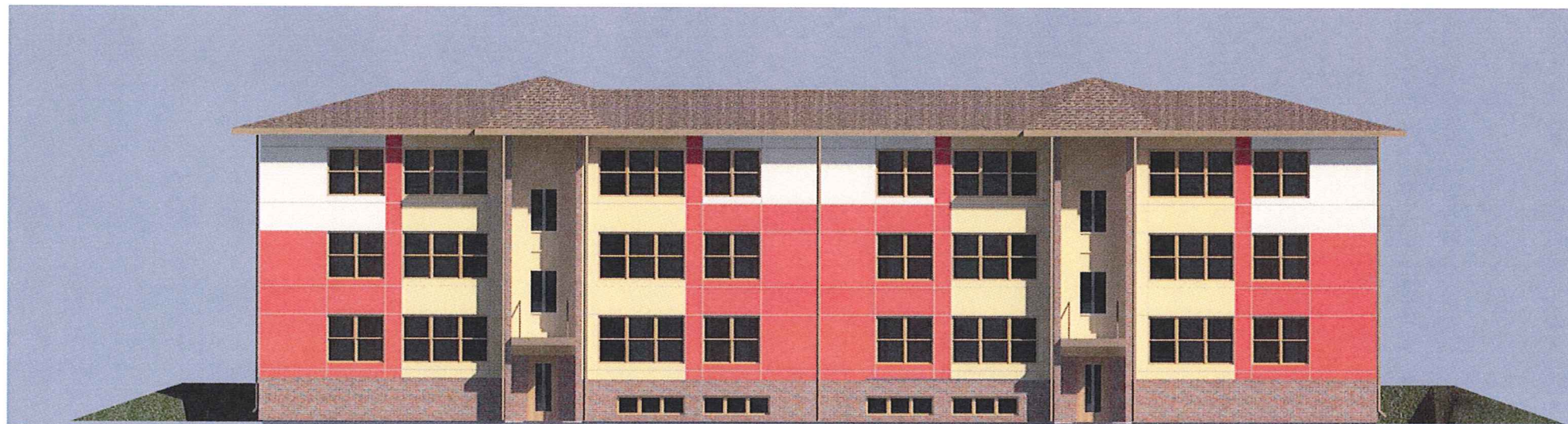
(See Section B for:)
 New Construction or Exterior Remodeling in C4 District (Fee required)

(See Section C for:)
 R.P.S.M. Parking Variance (Fee required)

(See Section D for:)
 Comprehensive Design Review* (Fee required)
 Street Graphics Variance* (Fee required)
 Other _____

*Public Hearing Required (Submission Deadline 3 Weeks in Advance of Meeting Date)

Where fees are required (as noted above) they apply with the first submittal for either initial or final approval of a project.



SCHEME 2 (BUILDINGS 1, 7 & 9)

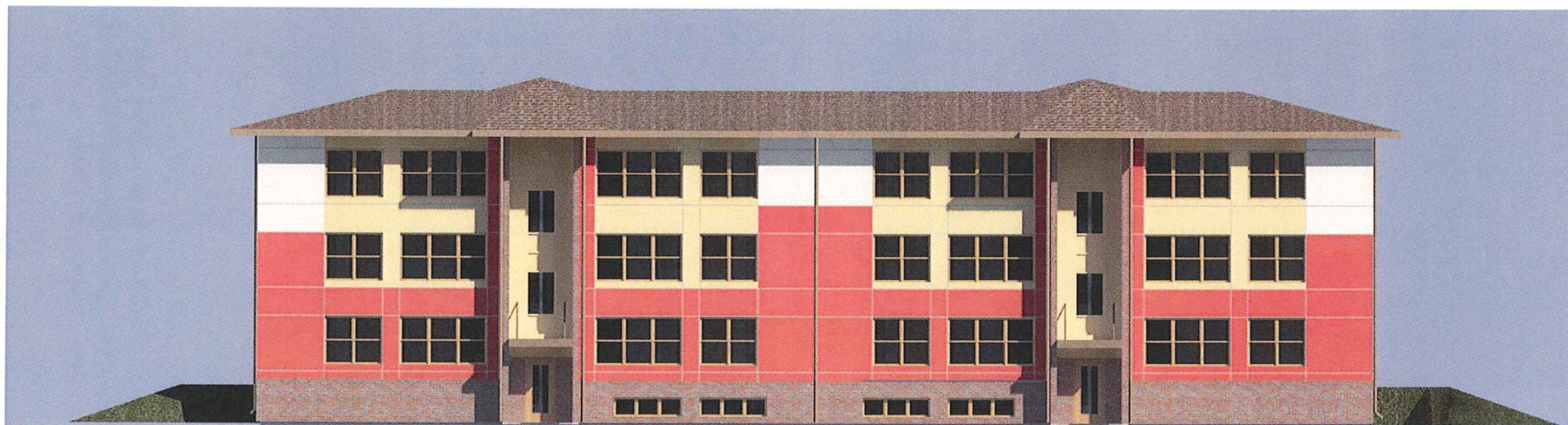


SCHEME 3 (BUILDINGS 2, 8 & 10)

OPTION A - FRONT ELEVATION

TRUAX PARK REDEVELOPMENT - PHASE I

1501-1507 WRIGHT STREET & 3502-3534 STRAUBEL STREET MADISON, WI 53704



SCHEME 2 (BUILDINGS 1, 7 & 9)

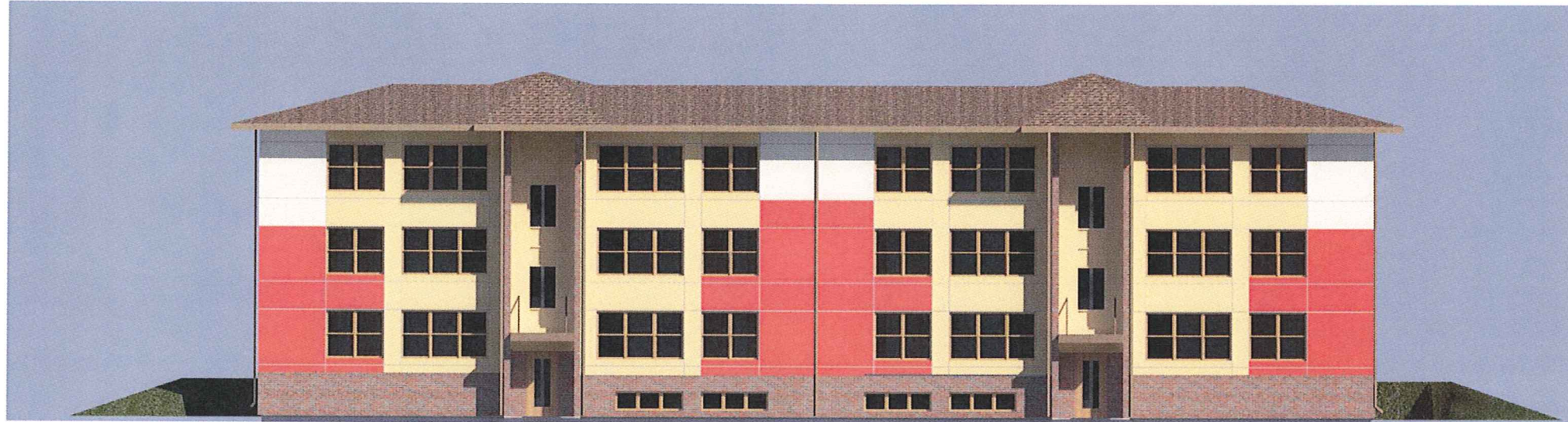


SCHEME 3 (BUILDINGS 2, 8 & 10)

OPTION B - FRONT ELEVATION

TRUAX PARK REDEVELOPMENT - PHASE I

1501-1507 WRIGHT STREET & 3502-3534 STRAUBEL STREET MADISON, WI 53704



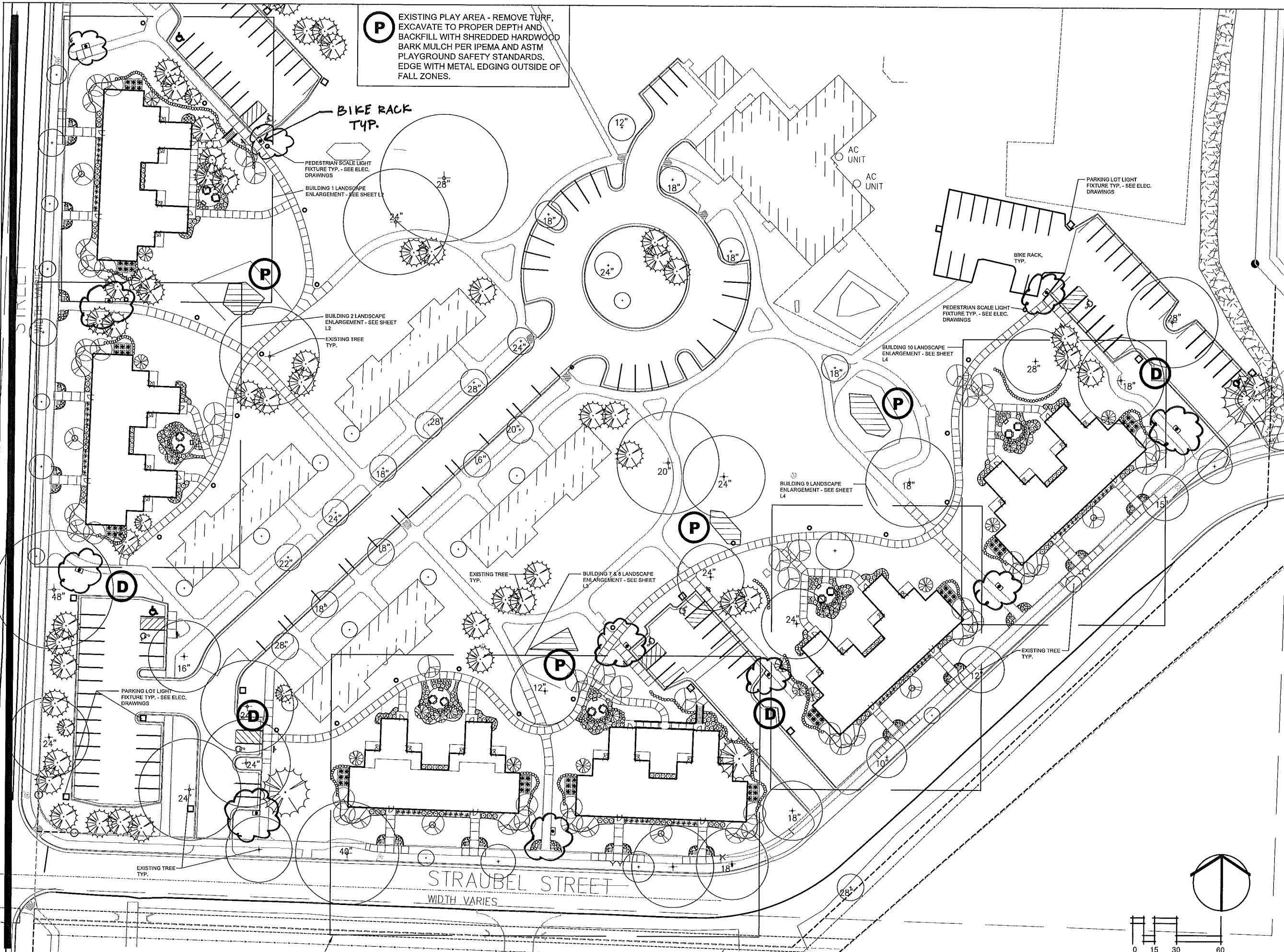
SCHEME 2 (BUILDINGS 1, 7 & 9)



SCHEME 3 (BUILDINGS 2, 8 & 10)

OPTION C - FRONT ELEVATION

TRUAX PARK REDEVELOPMENT - PHASE I



P EXISTING PLAY AREA - REMOVE TURF, EXCAVATE TO PROPER DEPTH AND BACKFILL WITH SHREDDED HARDWOOD BARK MULCH PER IPEMA AND ASTM PLAYGROUND SAFETY STANDARDS. EDGE WITH METAL EDGING OUTSIDE OF FALL ZONES.

BIKE RACK TYP.

PEDESTRIAN SCALE LIGHT FIXTURE TYP. - SEE ELEC. DRAWINGS

BUILDING 1 LANDSCAPE ENLARGEMENT - SEE SHEET L1

BUILDING 2 LANDSCAPE ENLARGEMENT - SEE SHEET L2

EXISTING TREE TYP.

BUILDING 10 LANDSCAPE ENLARGEMENT - SEE SHEET L4

BUILDING 9 LANDSCAPE ENLARGEMENT - SEE SHEET L4

EXISTING TREE TYP.

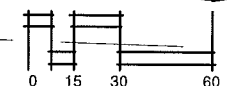
BUILDING 7 & 8 LANDSCAPE ENLARGEMENT - SEE SHEET L3

EXISTING TREE TYP.

PARKING LOT LIGHT FIXTURE TYP. - SEE ELEC. DRAWINGS

EXISTING TREE TYP.

STRAUBEL STREET
WIDTH VARIES



DIMENSIONIV
Madison Design Group
architecture · engineering · interior design
6515 Grand Teton Plaza, Suite 120
Madison, Wisconsin 53719
p 608.829.4444 · f 608.829.4445
dimensionivmadison.com

KSA
2033 Rutledge Street
Madison, Wisconsin 53704
608.334.3335

TRUAX PARK REDEVELOPMENT - PHASE I
Madison WI
1501-1507 WRIGHT STREET
3502-3534 STRAUBEL STREET
MADISON WI

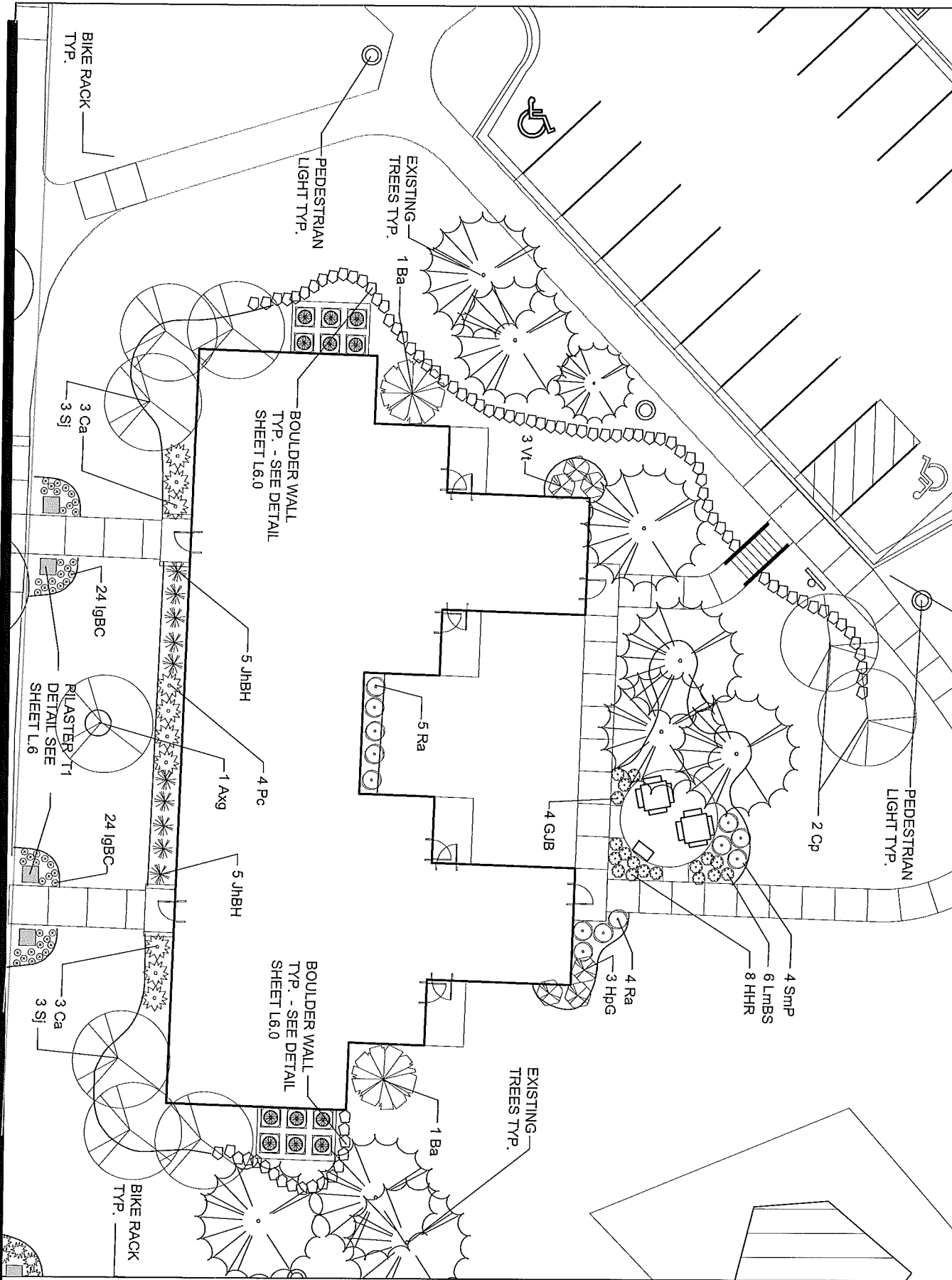
PRELIMINARY
NOT FOR
CONSTRUCTION

DATE OF ISSUE: 05-17-10
for UDC 06-09-10

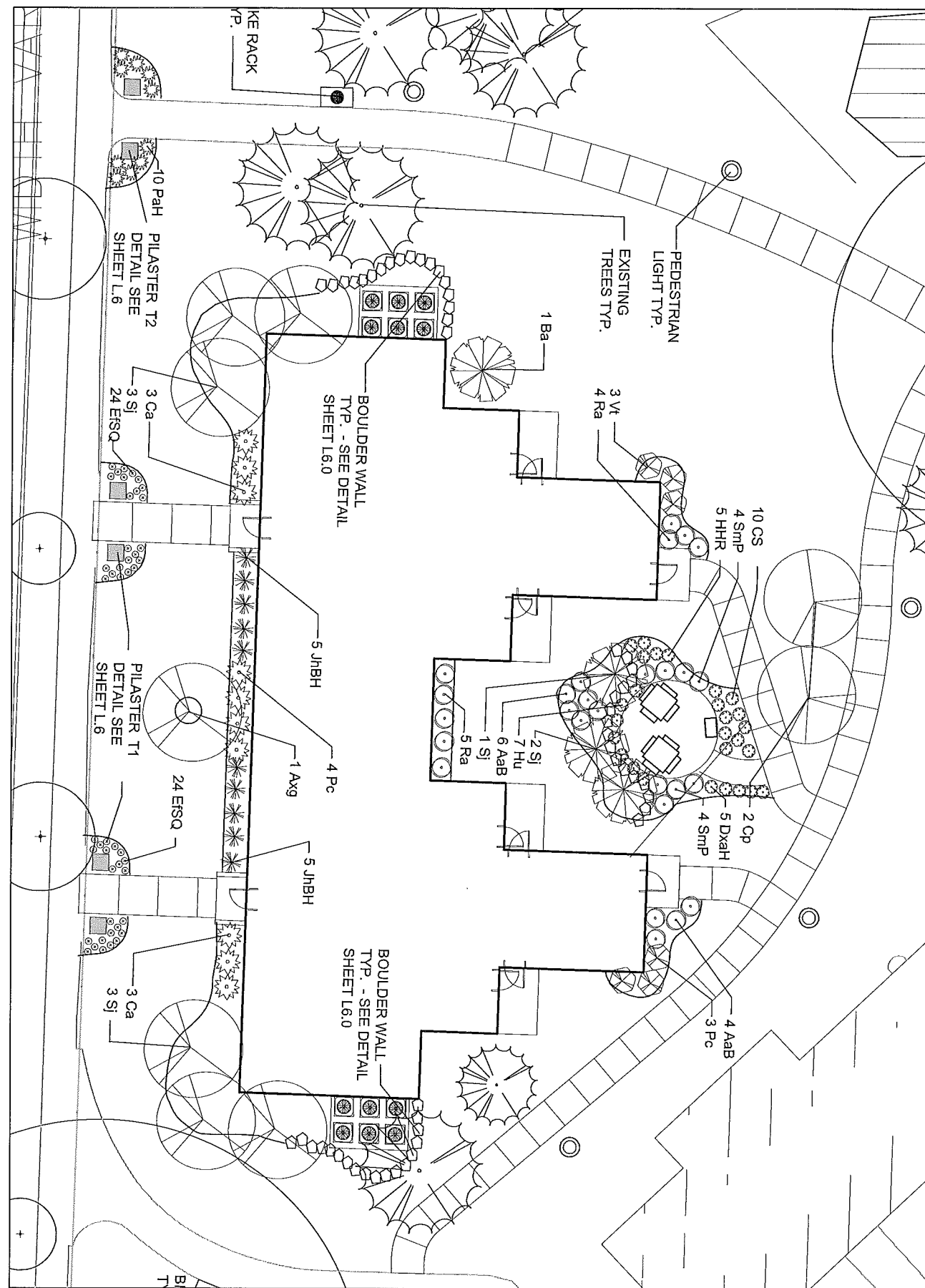
PROJECT # 09023

OVERALL LANDSCAPE PLAN
SCALE: 1" = 30'

L.1



BUILDING 1 LANDSCAPE ENLARGEMENT



BUILDING 2 LANDSCAPE ENLARGEMENT

DIMENSION
 Madison Design Group
 architecture • engineering • interior design
 6515 Grand Teton Plaza, Suite 120
 Madison, Wisconsin 53719
 p 608.829.4444 • f 608.829.4445
 dimension@madison.com

KSA
 2033 Rutledge Street
 Madison, Wisconsin 53704
 608.334.3335

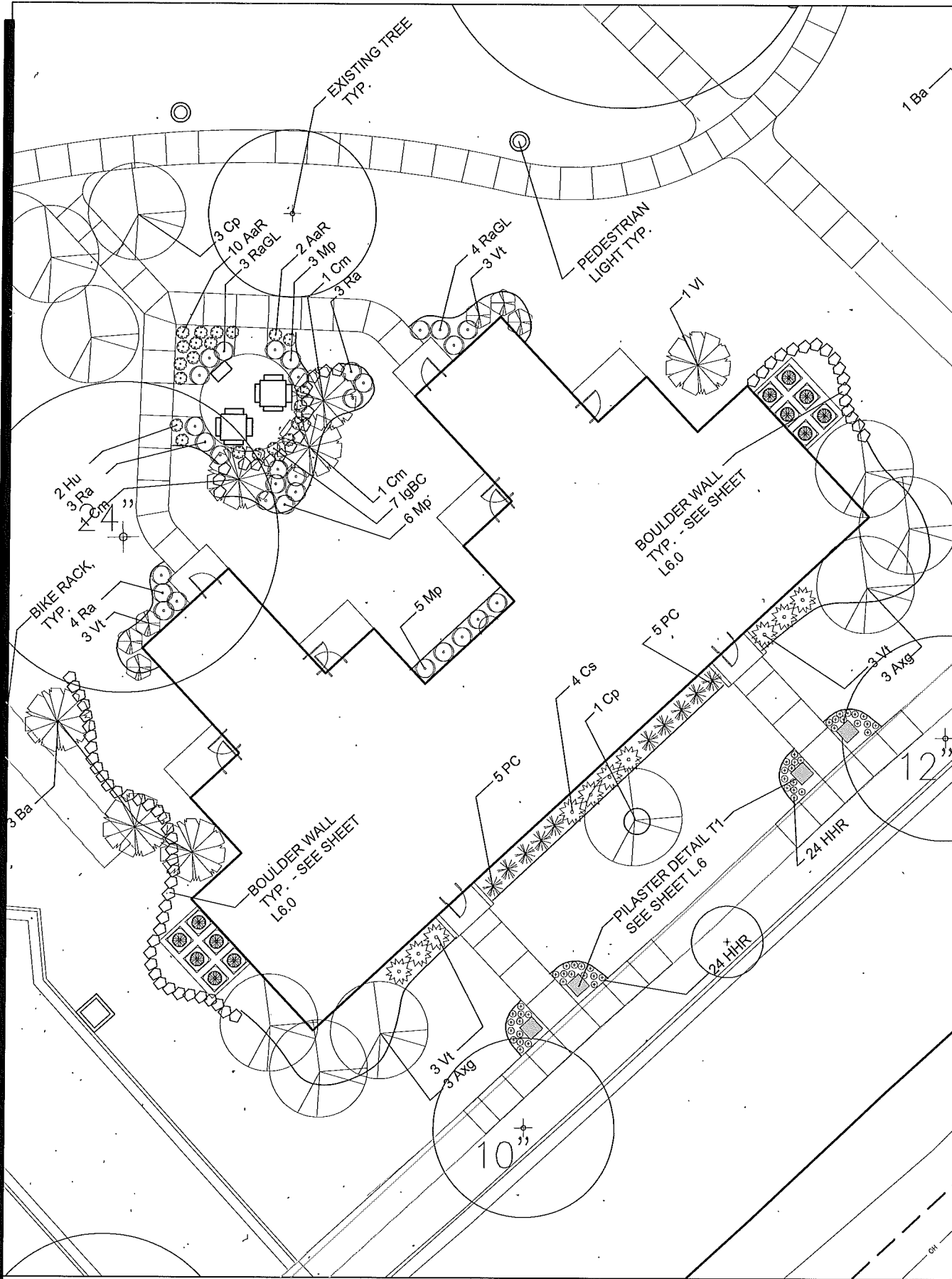
**TRUAX PARK
 REDEVELOPMENT -
 PHASE I
 Madison WI**
 1501-1507 WRIGHT STREET
 3502-3534 STRAUBEL STREET
 MADISON WI

**PRELIMINARY
 NOT FOR
 CONSTRUCTION**

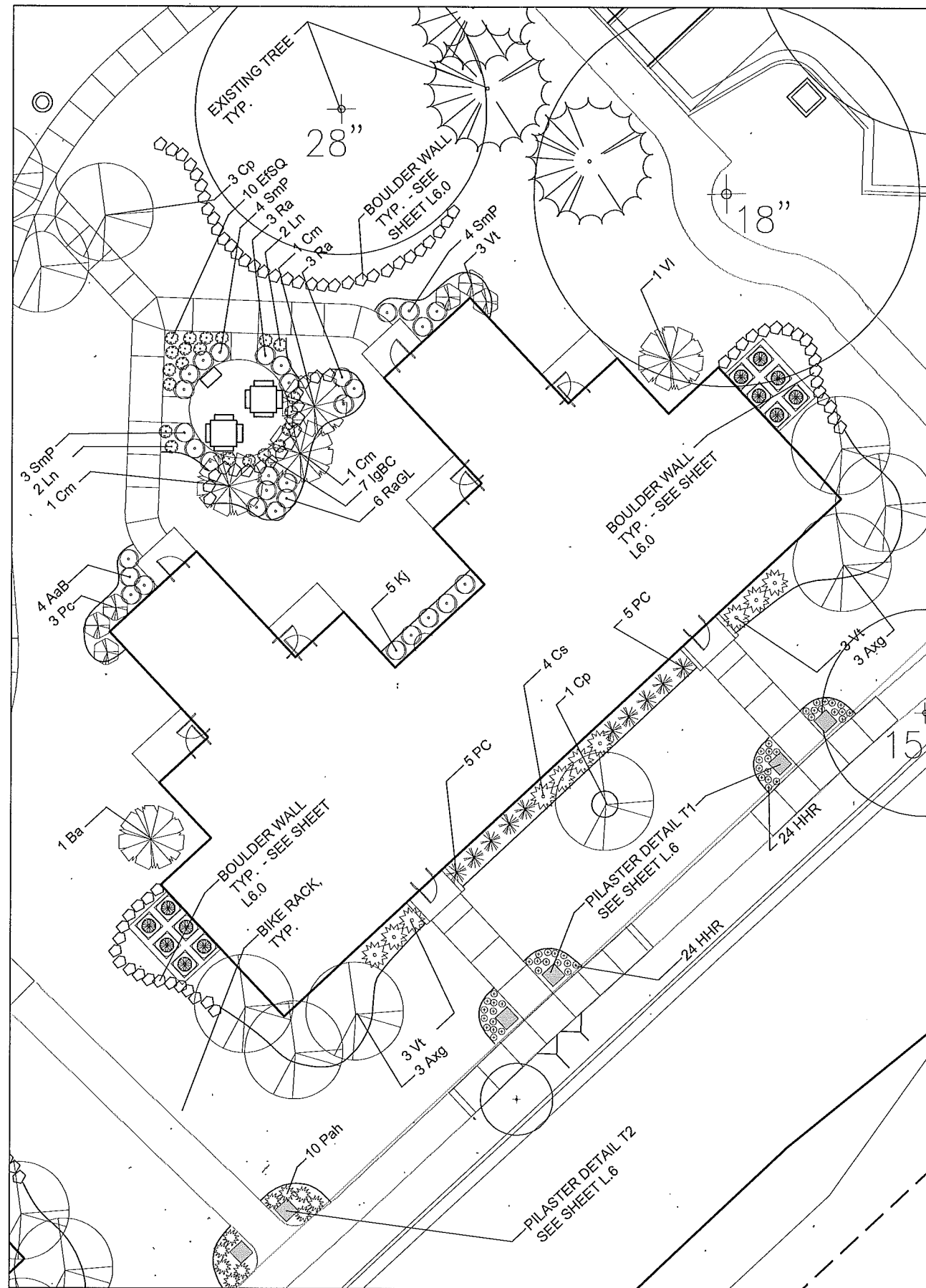
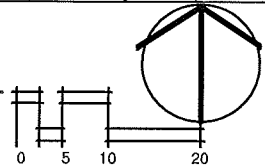
DATE OF ISSUE:	05-17-10
	for UDC 06-09-10
PROJECT #	09023

**LANDSCAPE PLAN
 ENLARGEMENT**
 SCALE: 1" = 10'

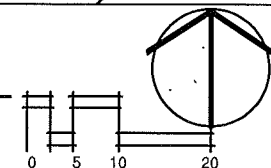
L.2



BUILDING 9 LANDSCAPE ENLARGEMENT



BUILDING 10 LANDSCAPE ENLARGEMENT



DIMENSION
Madison Design Group
architecture • engineering • interior design
6515 Grand Teton Plaza, Suite 120
Madison, Wisconsin 53719
p 608.829.4444 • f 608.829.4445
dimensionivmadison.com

KSA
2033 Rutledge Street
Madison, Wisconsin 53704
608.334.3335

TRUAX PARK
REDEVELOPMENT -
PHASE I
Madison WI
1501-1507 WRIGHT STREET
3502-3534 STRAUBEL STREET
MADISON WI

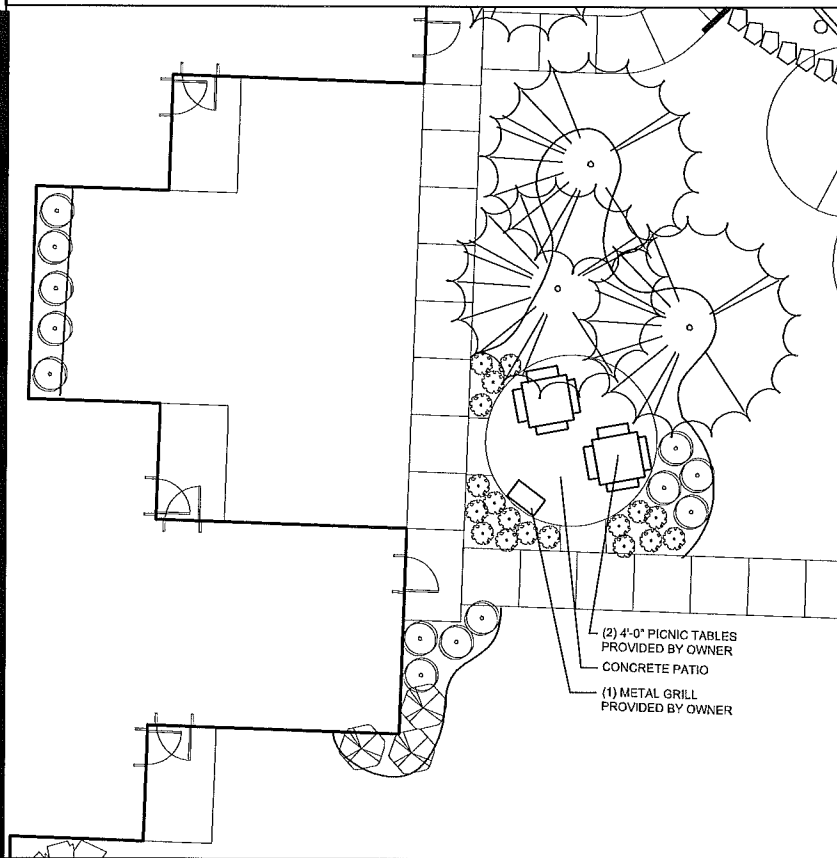
PRELIMINARY
NOT FOR
CONSTRUCTION

DATE OF ISSUE: 05-17-10
for UDC 06-09-10

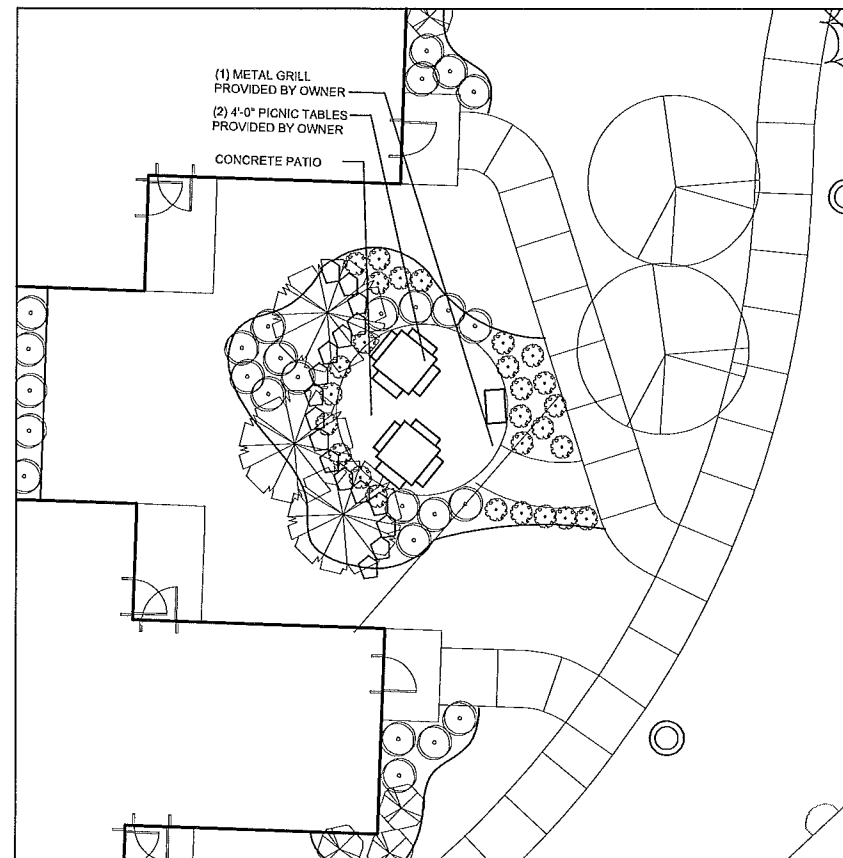
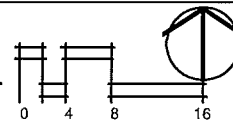
PROJECT # 09023

LANDSCAPE PLAN
ENLARGEMENT
SCALE: 1" = 10'

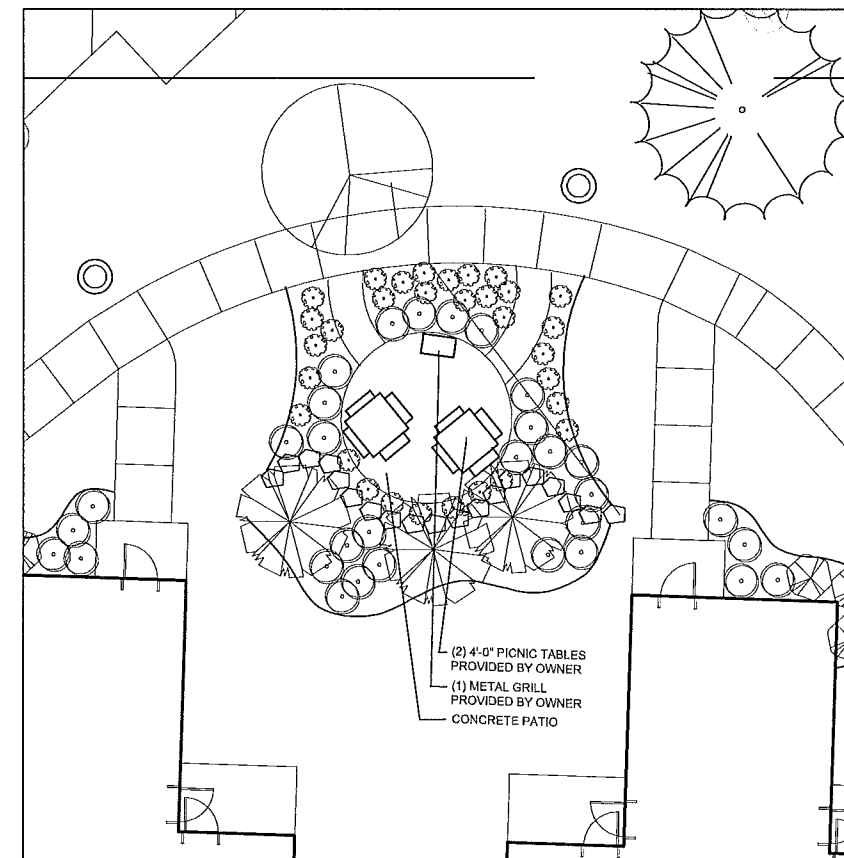
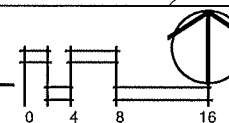
L.4



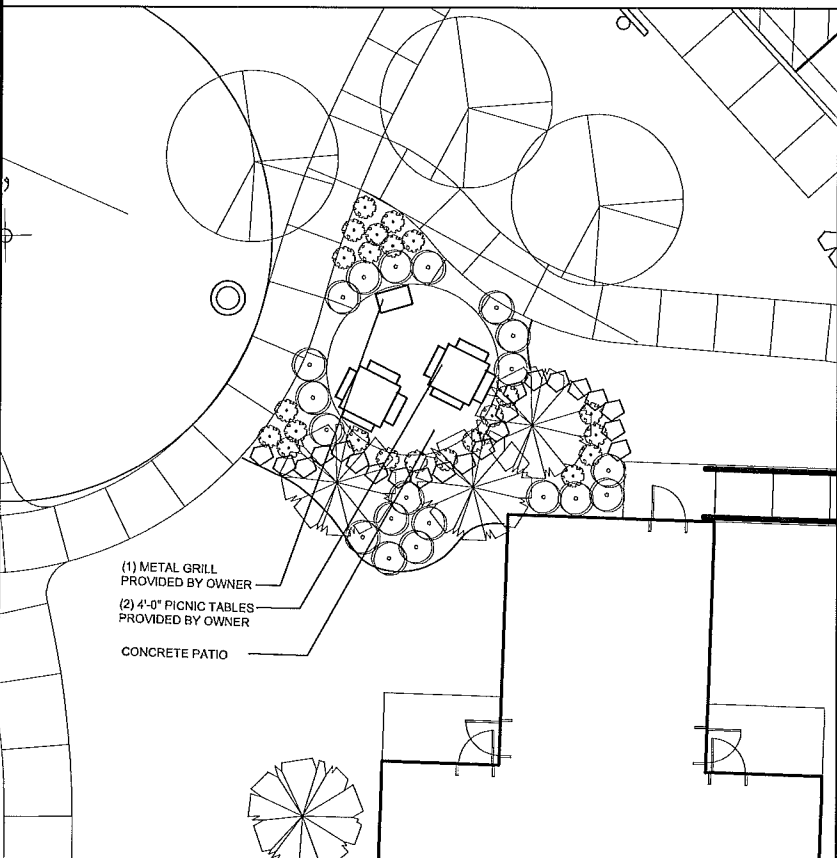
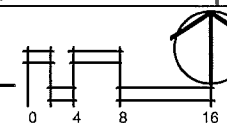
PATIO AREA BUILDING 1



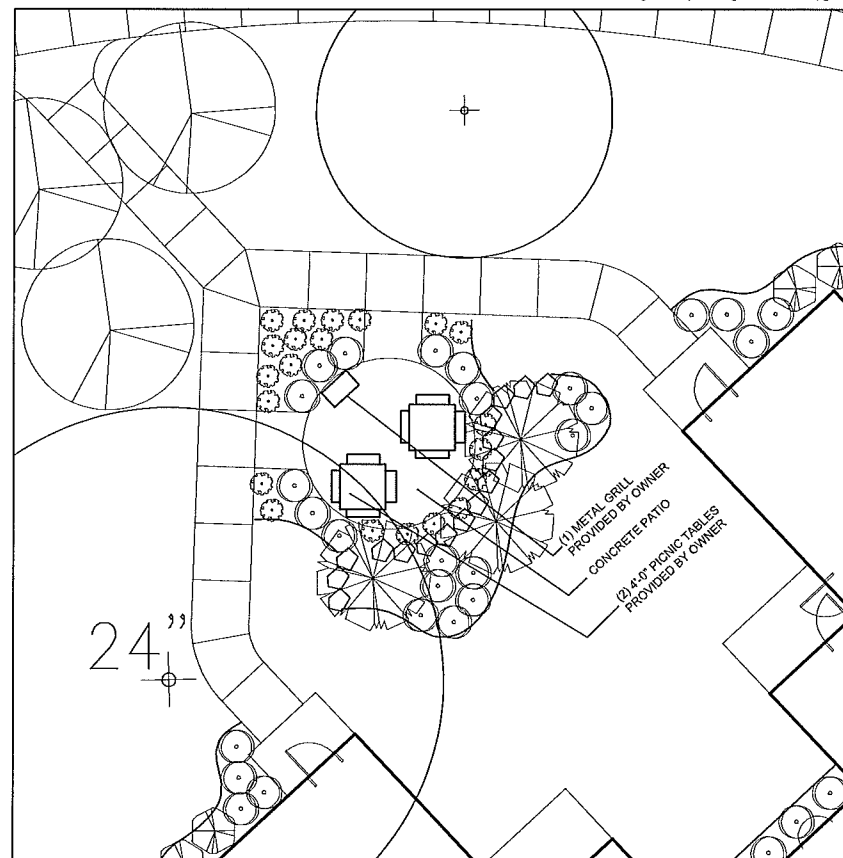
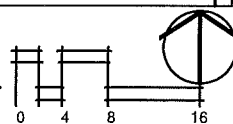
PATIO AREA BUILDING 2



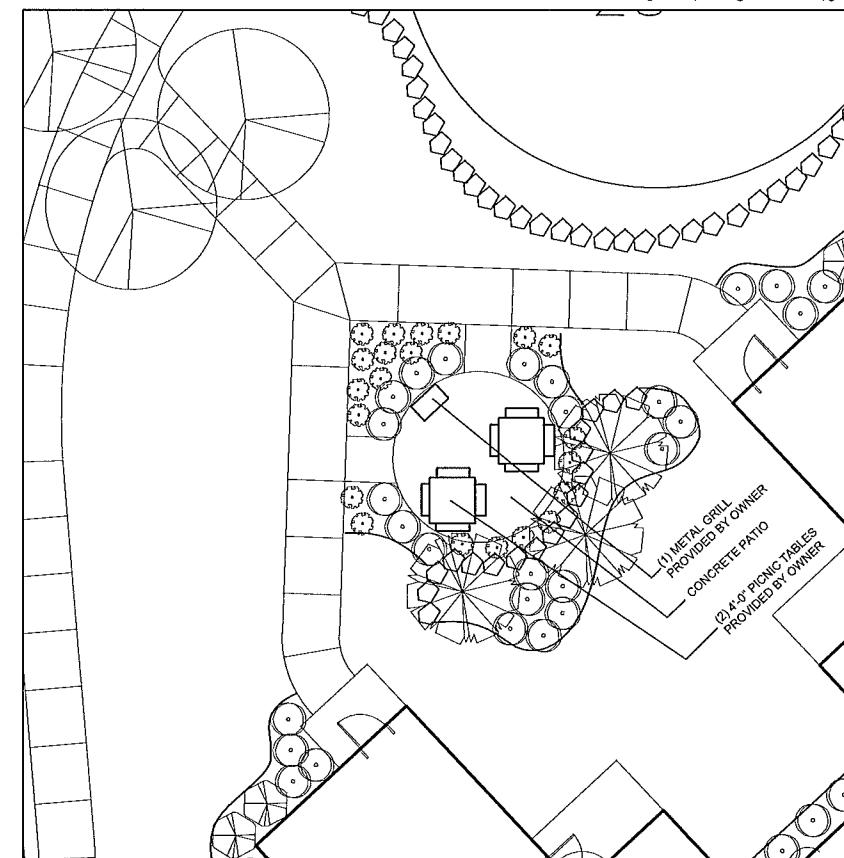
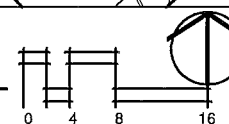
PATIO AREA BUILDING 7



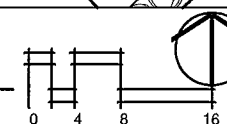
PATIO AREA BUILDING 8



PATIO AREA BUILDING 9



PATIO AREA BUILDING 10



DIMENSIONIV
Madison Design Group
architecture • engineering • interior design
6515 Grand Teton Place, Suite 120
Madison, Wisconsin 53710
p 608.829.4444 • f 608.829.4445
dimensionivmadison.com

KSA
2033 Rutledge Street
Madison, Wisconsin 53704
608.334.3335

**TRUAX PARK
REDEVELOPMENT -
PHASE I**
Madison WI
1501-1507 WRIGHT STREET
3502-3534 STRAUBEL STREET
MADISON WI

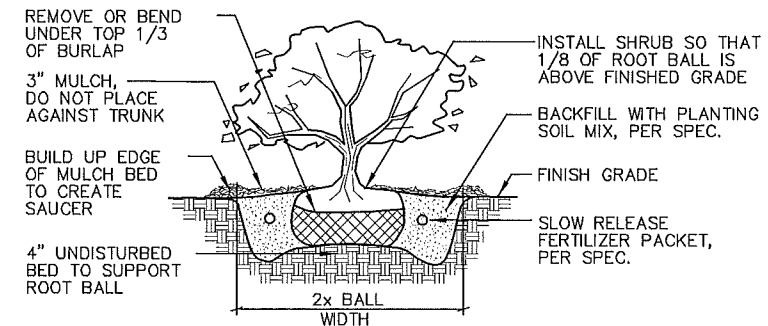
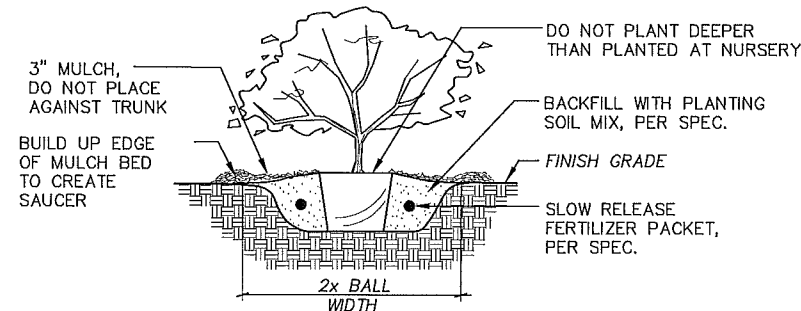
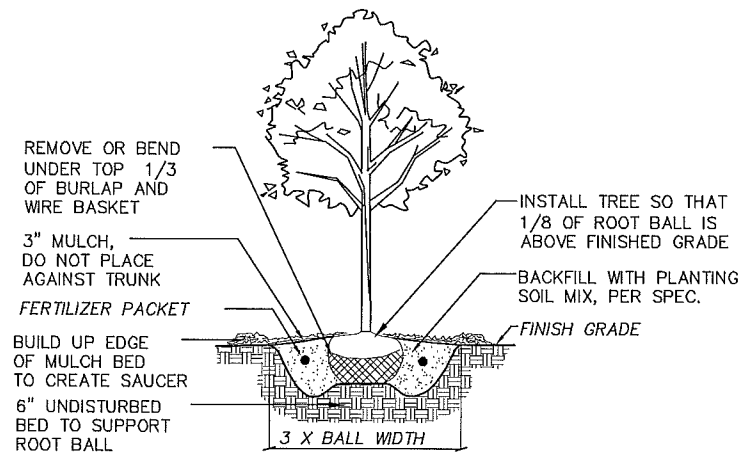
**PRELIMINARY
NOT FOR
CONSTRUCTION**

DATE OF ISSUE: 05-17-10
for UDC 06-09-10

PROJECT # 09023

**PATIO AREA
ENLARGEMENT PLAN**
SCALE: 1/8" = 1'-0"

L.5



1 B&B TREE PLANTING DETAIL

L6

NTS

2 CONTAINER PLANTING DETAIL

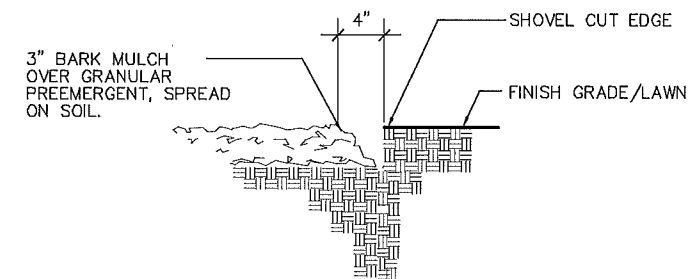
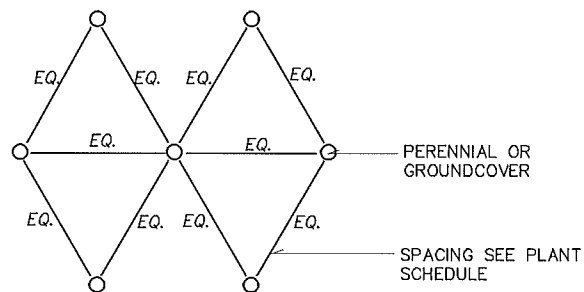
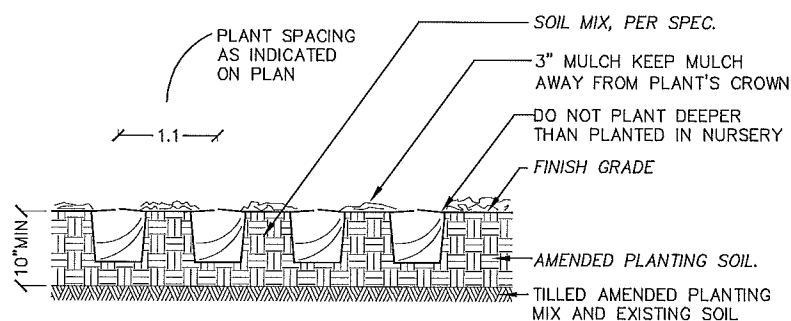
L6

NTS

3 B&B SHRUB PLANTING DETAIL

L6

NTS



4 GROUNDCOVER / PERENNIAL PLANTING DETAIL

L6

NTS

5 PERENNIAL/GROUNDCOVER SPACING DETAIL

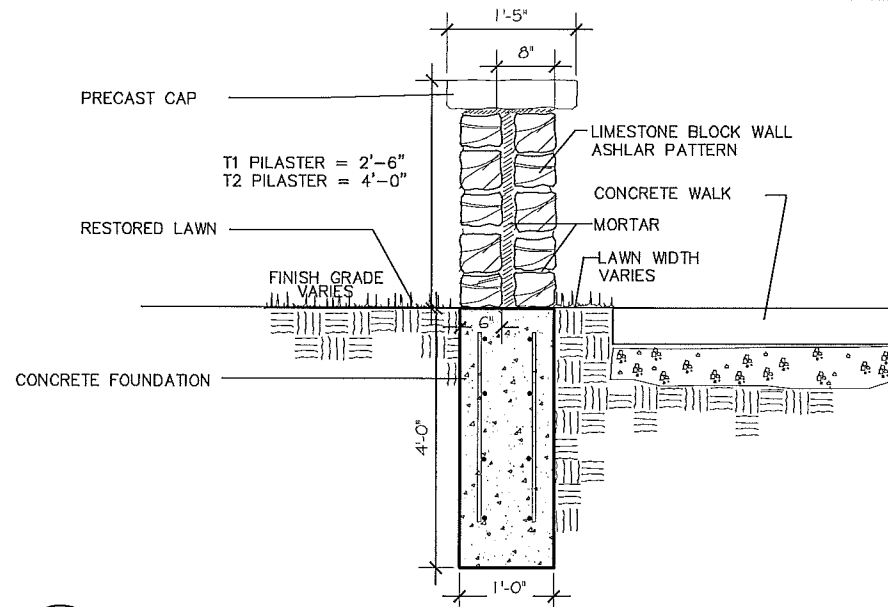
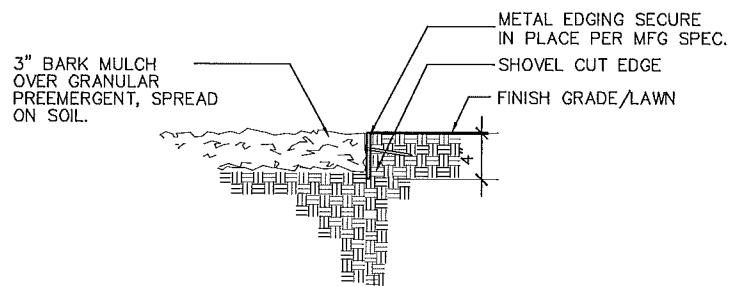
L6

NTS

6 BARK MULCH/SHOVEL CUT EDGE DETAIL

L6

NTS



7 METAL EDGING PLAYGROUND SURROUND

L6

NTS

8 PILASTER DETAIL

L6

NTS

DIMENSION
Madison Design Group

architecture • engineering • interior design
6515 Grand Teton Plaza, Suite 120
Madison, Wisconsin 53719
p 608.829.4444 • f 608.829.4445
dimensionmadison.com

KSA

2033 Rutledge Street
Madison, Wisconsin 53704
608.334.3335

TRUAX PARK
REDEVELOPMENT -
PHASE I

Madison WI

1501-1507 WRIGHT STREET
3502-3534 STRAUBEL STREET
MADISON WI

PRELIMINARY
NOT FOR
CONSTRUCTION

DATE OF ISSUE: 05-17-10
for UDC 06-09-10

PROJECT # 09023

LANDSCAPE DETAILS

SCALE: AS NOTED

L.6

PLANT LIST - Buildings 1 and 2						
Code	Scientific Name	Common Name	Quantity	Size	Root Cond.	Remarks
TREES						
Arg	Amelanchier x grandiflora	Apple Serviceberry	2	5'	B&B	
Ba	Betula alba	European White Birch	3	7-9'	B&B	
Cp	Crataegus phaeopyrum	Crataegus phaeopyrum	4	5'	B&B	
Sj	Syringa japonica	Japanese Tree Lilac	15	5'	B&B	
SHRUBS						
Ab	Aronia a. Brillantissima	Red Chokeberry	10	5 gal.	pot	
Cm	Cornus mas	Cornelian Cherry Dogwood	0	5'	pot	
Cs	Cornus sericea	Red Osier Dogwood	0	5 gal.	pot	
Hv	Hamamelis virginiana	Common Witchhazel	0	5 gal.	pot	
HpG	Hydrangea pan. Grandiflora	Pee Gee Hydrangea	0	5 gal.	pot	
JbH	Juniperus horizontalis 'B.H.'	Bar Harbor Juniper	20	2 gal.	pot	
Kj	Kerria japonica	Japanese Kerria	0	5 gal.	pot	
Mp	Myrica pensylvanica	Northern Bayberry	0	2 gal.	pot	
Pc	Paxistima canbyi	Canby Paxistima	0	1 gal.	pot	
Pf	Potentilla fruticosa	Shrubby Cinquefoil	0	1 gal.	pot	
Pc	Prunus x cistena	Purpleleaf Sand Cherry	11	5 gal.	pot	
Ric	Rhamnus frax. Columnaris	Tallhedge Buckthorn	0	1 gal.	pot	
RaL	Rhus aromatica 'Gro-Low'	Gro-Low Sumac	0	1 gal.	pot	
Ra	Ribes alpinum	Alpine Currant	9	1 gal.	pot	
RHW	Rosa 'Nearly Wild'	Nearly Wild Rose	0	1 gal.	pot	
Rr	Rosa rugosa	Rugosa Rose	0	5 gal.	pot	
Sab	Spiraea x bumalda 'A.W.'	Anthony Waterer Spiraea	0	2 gal.	pot	
Sns	Spiraea nippon. Snowmound	Snowmound Spiraea	0	2 gal.	pot	
Ss	Symphoricarpos alba	Snowberry	0	5 gal.	pot	
So	Symphoricarpos orbiculatus	Indian Current Coraberry	0	2 gal.	pot	
Smp	Syringa meyeri 'Palibin'	Palibin Lilac	12	2 gal.	pot	
Vd	Viburnum dentatum	Arrowwood Viburnum	0	5 gal.	pot	
Vl	Viburnum lantana	Wayfaring Tree Viburnum	0	5'	pot	
Vt	Viburnum trilobum	American Cranberrybush	6	5 gal.	pot	
PERENNIALS / GROUNDCOVERS / GRASSES / VINES						
ArBG	Ajuga reptans 'Burg-Glow'	Burgundy Glow Ajuga	0	1 gal.	pot	
Ae	Asarum europaeum	European Ginger	0	1 gal.	pot	
Ast	Astilbe arendsii 'Rheinland'	Rheinland Astilbe	0	1 gal.	pot	
Ca	Calamagrostis arundinacea	Karl Forester Fiber Rd Grass	12	1 gal.	pot	
Cms	Chrysanthemum max. Shasta	Shasta Daisy	0	1 gal.	pot	
Cs	Coreopsis 'Sunray'	Sunray Coreopsis	10	1 gal.	pot	
DxH	Dianthus x alwoodii 'H.'	Helen Dianthus	5	1 gal.	pot	
Ep	Echinacea purpurea	Purple Coneflower	0	1 gal.	pot	
ESQ	Euonymus fortunei 'S.Q.'	Silver Queen Euonymus	48	1 gal.	pot	
Go	Galium odoratum	Sweet Woodruff	0	1 gal.	pot	
GJB	Ceranium 'Johnson's Blue'	Johnson's Blue Cranesbill	4	1 gal.	pot	
HBR	Hemerocallis 'Happy Ret.'	Happy Returns Daylily	13	gal.	pot	
HFW	Hosta sieboldiana 'F.W.'	Francis Williams Hosta	0	gal.	pot	
Hu	Hosta undulata	Plantain Lily	7	1 gal.	pot	
IgBC	Iris germanica 'Bl. C.'	Blue Crusader Iris	48	1 gal.	pot	
LmBS	Lamium maculatum 'B.S.'	Beacon Silver Nettie	6	1 gal.	pot	
LmY	Liatris muscari 'Variegata'	Blue Lily-turf	0	1 gal.	pot	
Ln	Lysimachia nummularia	Moneywort	0	1 gal.	pot	
PdH	Pennisetum alopec. 'Hamen'	Hamen Dwf. Fountaingrass	10	1 gal.	pot	
Pl	Pachysandra terminalis	Japanese Spurge	0	1 gal.	pot	

PLANT LIST - Buildings 7 and 8						
Code	Scientific Name	Common Name	Quantity	Size	Root Cond.	Remarks
TREES						
Arg	Amelanchier x grandiflora	Apple Serviceberry	2	5'	B&B	
Ba	Betula alba	European White Birch	3	7-9'	B&B	
Cp	Crataegus phaeopyrum	Crataegus phaeopyrum	17	5'	B&B	
Sj	Syringa japonica	Japanese Tree Lilac	0	5'	B&B	
Tc	Tsuga canadensis	Canadian Hemlock	0	5'	B&B	
SHRUBS						
Ab	Aronia a. Brillantissima	Red Chokeberry	35	5 gal.	pot	
Cm	Cornus mas	Cornelian Cherry Dogwood	3	5'	pot	
Cs	Cornus sericea	Red Osier Dogwood	14	5 gal.	pot	
Hv	Hamamelis virginiana	Common Witchhazel	0	5 gal.	pot	
HpG	Hydrangea pan. Grandiflora	Pee Gee Hydrangea	0	5 gal.	pot	
JbH	Juniperus horizontalis 'B.H.'	Bar Harbor Juniper	20	2 gal.	pot	
Kj	Kerria japonica	Japanese Kerria	10	5 gal.	pot	
Mp	Myrica pensylvanica	Northern Bayberry	0	2 gal.	pot	
Pc	Paxistima canbyi	Canby Paxistima	0	1 gal.	pot	
Pf	Potentilla fruticosa	Shrubby Cinquefoil	0	1 gal.	pot	
Pc	Prunus x cistena	Purpleleaf Sand Cherry	4	5 gal.	pot	
Ric	Rhamnus frax. Columnaris	Tallhedge Buckthorn	0	5 gal.	pot	
RaL	Rhus aromatica 'Gro-Low'	Gro-Low Sumac	0	1 gal.	pot	
Ra	Ribes alpinum	Alpine Currant	16	1 gal.	pot	
RHW	Rosa 'Nearly Wild'	Nearly Wild Rose	0	1 gal.	pot	
Rr	Rosa rugosa	Rugosa Rose	0	5 gal.	pot	
Sab	Spiraea x bumalda 'A.W.'	Anthony Waterer Spiraea	0	2 gal.	pot	
Sns	Spiraea nippon. Snowmound	Snowmound Spiraea	0	2 gal.	pot	
Ss	Symphoricarpos alba	Snowberry	0	5 gal.	pot	
So	Symphoricarpos orbiculatus	Indian Current Coraberry	0	2 gal.	pot	
Smp	Syringa meyeri 'Palibin'	Palibin Lilac	15	2 gal.	pot	
Vd	Viburnum dentatum	Arrowwood Viburnum	0	5 gal.	pot	
Vl	Viburnum lantana	Wayfaring Tree Viburnum	6	5'	pot	
Vt	Viburnum trilobum	American Cranberrybush	6	5 gal.	pot	
PERENNIALS / GROUNDCOVERS / GRASSES / VINES						
ArBG	Ajuga reptans 'Burg-Glow'	Burgundy Glow Ajuga	0	1 gal.	pot	
Ae	Asarum europaeum	European Ginger	0	1 gal.	pot	
Ast	Astilbe arendsii 'Rheinland'	Rheinland Astilbe	4	1 gal.	pot	
Ca	Calamagrostis arundinacea	Karl Forester Fiber Rd Grass	6	1 gal.	pot	
Cms	Chrysanthemum max. Shasta	Shasta Daisy	0	1 gal.	pot	
Cs	Coreopsis 'Sunray'	Sunray Coreopsis	6	1 gal.	pot	
DxH	Dianthus x alwoodii 'H.'	Helen Dianthus	0	1 gal.	pot	
Ep	Echinacea purpurea	Purple Coneflower	0	1 gal.	pot	
ESQ	Euonymus fortunei 'S.Q.'	Silver Queen Euonymus	0	1 gal.	pot	
Go	Galium odoratum	Sweet Woodruff	0	1 gal.	pot	
GJB	Ceranium 'Johnson's Blue'	Johnson's Blue Cranesbill	0	1 gal.	pot	
HBR	Hemerocallis 'Happy Ret.'	Happy Returns Daylily	0	1 gal.	pot	
HFW	Hosta sieboldiana 'F.W.'	Francis Williams Hosta	14	1 gal.	pot	
Hu	Hosta undulata	Plantain Lily	0	1 gal.	pot	
IgBC	Iris germanica 'Bl. C.'	Blue Crusader Iris	10	1 gal.	pot	
LmBS	Lamium maculatum 'B.S.'	Beacon Silver Nettie	68	1 gal.	pot	
LmY	Liatris muscari 'Variegata'	Blue Lily-turf	0	1 gal.	pot	
Ln	Lysimachia nummularia	Moneywort	48	1 gal.	pot	
PdH	Pennisetum alopec. 'Hamen'	Hamen Dwf. Fountaingrass	10	1 gal.	pot	
Pl	Pachysandra terminalis	Japanese Spurge	0	1 gal.	pot	

PLANT LIST - Buildings 9 and 10						
Code	Scientific Name	Common Name	Quantity	Size	Root Cond.	Remarks
TREES						
Arg	Amelanchier x grandiflora	Apple Serviceberry	12	5'	B&B	
Ba	Betula alba	European White Birch	4	7-9'	B&B	
Cp	Crataegus phaeopyrum	Crataegus phaeopyrum	8	5'	B&B	
Sj	Syringa japonica	Japanese Tree Lilac	0	5'	B&B	
Tc	Tsuga canadensis	Canadian Hemlock	0	5'	B&B	
SHRUBS						
Ab	Aronia a. Brillantissima	Red Chokeberry	4	5 gal.	pot	
Cm	Cornus mas	Cornelian Cherry Dogwood	3	5'	pot	
Cs	Cornus sericea	Red Osier Dogwood	8	5 gal.	pot	
Hv	Hamamelis virginiana	Common Witchhazel	0	5 gal.	pot	
HpG	Hydrangea pan. Grandiflora	Pee Gee Hydrangea	0	5 gal.	pot	
JbH	Juniperus horizontalis 'B.H.'	Bar Harbor Juniper	0	2 gal.	pot	
Kj	Kerria japonica	Japanese Kerria	5	5 gal.	pot	
Mp	Myrica pensylvanica	Northern Bayberry	14	2 gal.	pot	
Pc	Paxistima canbyi	Canby Paxistima	20	1 gal.	pot	
Pf	Potentilla fruticosa	Shrubby Cinquefoil	0	5 gal.	pot	
Pc	Prunus x cistena	Purpleleaf Sand Cherry	3	5 gal.	pot	
Ric	Rhamnus frax. Columnaris	Tallhedge Buckthorn	0	5 gal.	pot	
RaL	Rhus aromatica 'Gro-Low'	Gro-Low Sumac	13	1 gal.	pot	
Ra	Ribes alpinum	Alpine Currant	16	1 gal.	pot	
RHW	Rosa 'Nearly Wild'	Nearly Wild Rose	0	1 gal.	pot	
Rr	Rosa rugosa	Rugosa Rose	0	5 gal.	pot	
Sab	Spiraea x bumalda 'A.W.'	Anthony Waterer Spiraea	0	2 gal.	pot	
Sns	Spiraea nippon. Snowmound	Snowmound Spiraea	0	2 gal.	pot	
Ss	Symphoricarpos alba	Snowberry	0	5 gal.	pot	
So	Symphoricarpos orbiculatus	Indian Current Coraberry	0	2 gal.	pot	
Smp	Syringa meyeri 'Palibin'	Palibin Lilac	11	2 gal.	pot	
Vd	Viburnum dentatum	Arrowwood Viburnum	0	5 gal.	pot	
Vl	Viburnum lantana	Wayfaring Tree Viburnum	2	5'	pot	
Vt	Viburnum trilobum	American Cranberrybush	21	5 gal.	pot	
PERENNIALS / GROUNDCOVERS / GRASSES / VINES						
ArBG	Ajuga reptans 'Burg-Glow'	Burgundy Glow Ajuga	0	1 gal.	pot	
Ae	Asarum europaeum	European Ginger	0	1 gal.	pot	
Ast	Astilbe arendsii 'Rheinland'	Rheinland Astilbe	12	1 gal.	pot	
Ca	Calamagrostis arundinacea	Karl Forester Fiber Rd Grass	0	1 gal.	pot	
Cms	Chrysanthemum max. Shasta	Shasta Daisy	0	1 gal.	pot	
Cs	Coreopsis 'Sunray'	Sunray Coreopsis	0	1 gal.	pot	
DxH	Dianthus x alwoodii 'H.'	Helen Dianthus	0	1 gal.	pot	
Ep	Echinacea purpurea	Purple Coneflower	0	1 gal.	pot	
ESQ	Euonymus fortunei 'S.Q.'	Silver Queen Euonymus	10	1 gal.	pot	
Go	Galium odoratum	Sweet Woodruff	0	1 gal.	pot	
GJB	Ceranium 'Johnson's Blue'	Johnson's Blue Cranesbill	0	1 gal.	pot	
HBR	Hemerocallis 'Happy Ret.'	Happy Returns Daylily	96	1 gal.	pot	
HFW	Hosta sieboldiana 'F.W.'	Francis Williams Hosta	0	1 gal.	pot	
Hu	Hosta undulata	Plantain Lily	2	1 gal.	pot	
IgBC	Iris germanica 'Bl. C.'	Blue Crusader Iris	13	1 gal.	pot	
LmBS	Lamium maculatum 'B.S.'	Beacon Silver Nettie	0	1 gal.	pot	
LmY	Liatris muscari 'Variegata'	Blue Lily-turf	0	1 gal.	pot	
Ln	Lysimachia nummularia	Moneywort	4	1 gal.	pot	
PdH	Pennisetum alopec. 'Hamen'	Hamen Dwf. Fountaingrass	10	1 gal.	pot	
Pl	Pachysandra terminalis	Japanese Spurge	0	1 gal.	pot	

Landscape Notes

- Contractor to protect existing trees to remain with fencing at a minimum of 5' outside of tree drip line or 10' from from building foundation whichever is less.
- Contractor to verify plant material quantities prior to bid. Where a discrepancies exists notify Landscape architect.
- Plant substitutions shall be submitted in writing prior to bidding and approved by landscape architect.
- Site furnishing provide by owner,
- All existing and proposes tree to receive a 3" shredded hardwood bark mulch ring as per detailed on sheet L6.0.
- All planting beds to receive a spade edge per detailed on sheet L6.0.
- Disturbed areas, with in limits of construction, to be prepared and seeded with Madison Parks turf grass blend at a rate per manufactures specifications.
- Where there is a discrepancy between plans and specifications, specifications prevail.

DIMENSIONIM
Madison Design Group
architecture • engineering • interior design
8515 Grand Teton Plaza, Suite 120
Madison, Wisconsin 53719
p 608.829.4444 • f 608.829.4445
dimensionimadison.com

KSA
2033 Rutledge Street
Madison, Wisconsin 53704
608.334.3335

TRUAX PARK
REDEVELOPMENT -
PHASE I
Madison WI
1501-1507 WRIGHT STREET
3502-3534 STRAUDEL STREET
MADISON WI

PRELIMINARY
NOT FOR
CONSTRUCTION

DATE OF ISSUE: 05-17-10
for UDC 06-09-10

PROJECT # 09023

LANDSCAPE
MATERIAL LIST