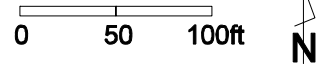


BAXTER
1
WARD
HIGHLANDS
8 9 10

ENGELHART DR

**Baxter Park
Path Construction
Path Easement Exhibit**

Prepared Jan 26, 2011
by City of Madison Parks Div



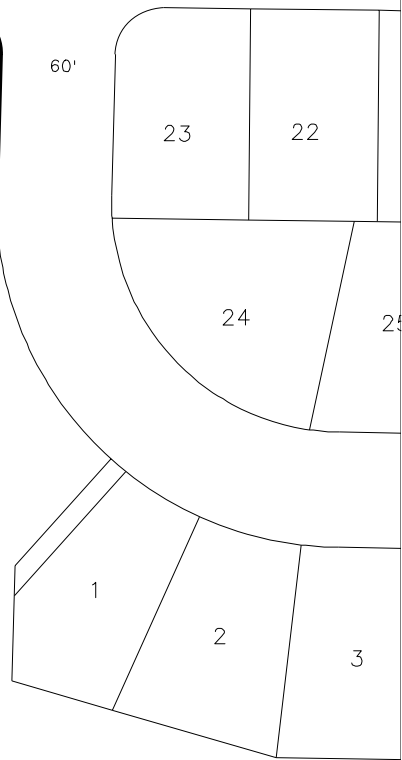
Soccer Field

BAXTER PARK
City of Madison Parks Div.

0609-011-0207-4
777 Engelhart Dr
Unplatted lands
Part of NW1/4 of NE1/4
Section 1, T6N R9E

**PATH
CENTERLINE**

Pond



DANE COUNTY PARKS
0609-011-0095-3
905 Lorena Pkwy

**CITY OF MADISON
STORMWATER UTIL**
0609-011-0096-1
909 Lorena Pkwy
Outlot 2, Hickory Edge

EXHIBIT A

DANE COUNTY PARKS
0609-011-0097-9
901 Engelhart Dr

DANE COUNTY PARKS
0609-011-0095-3
905 Lorena Pkwy